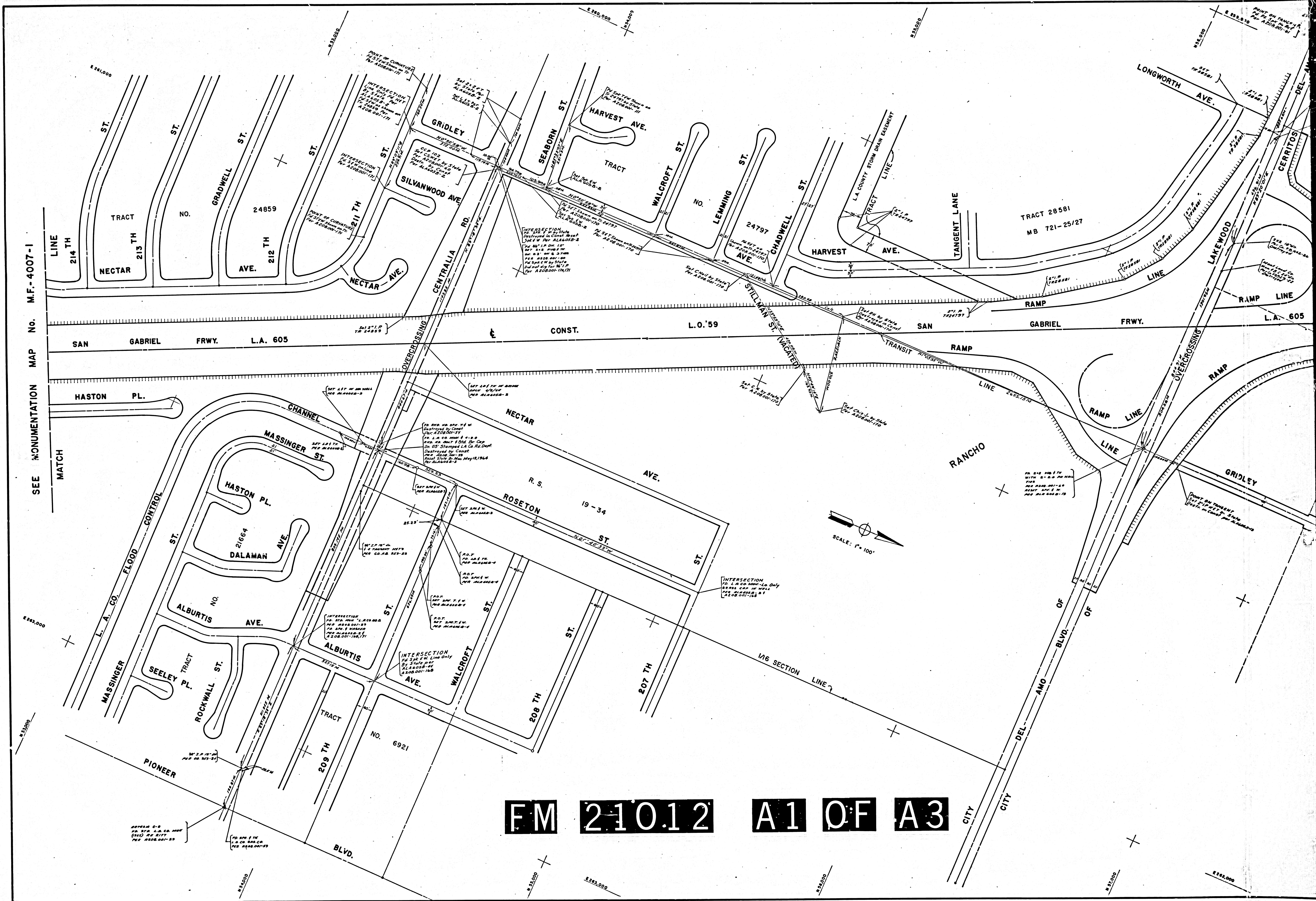
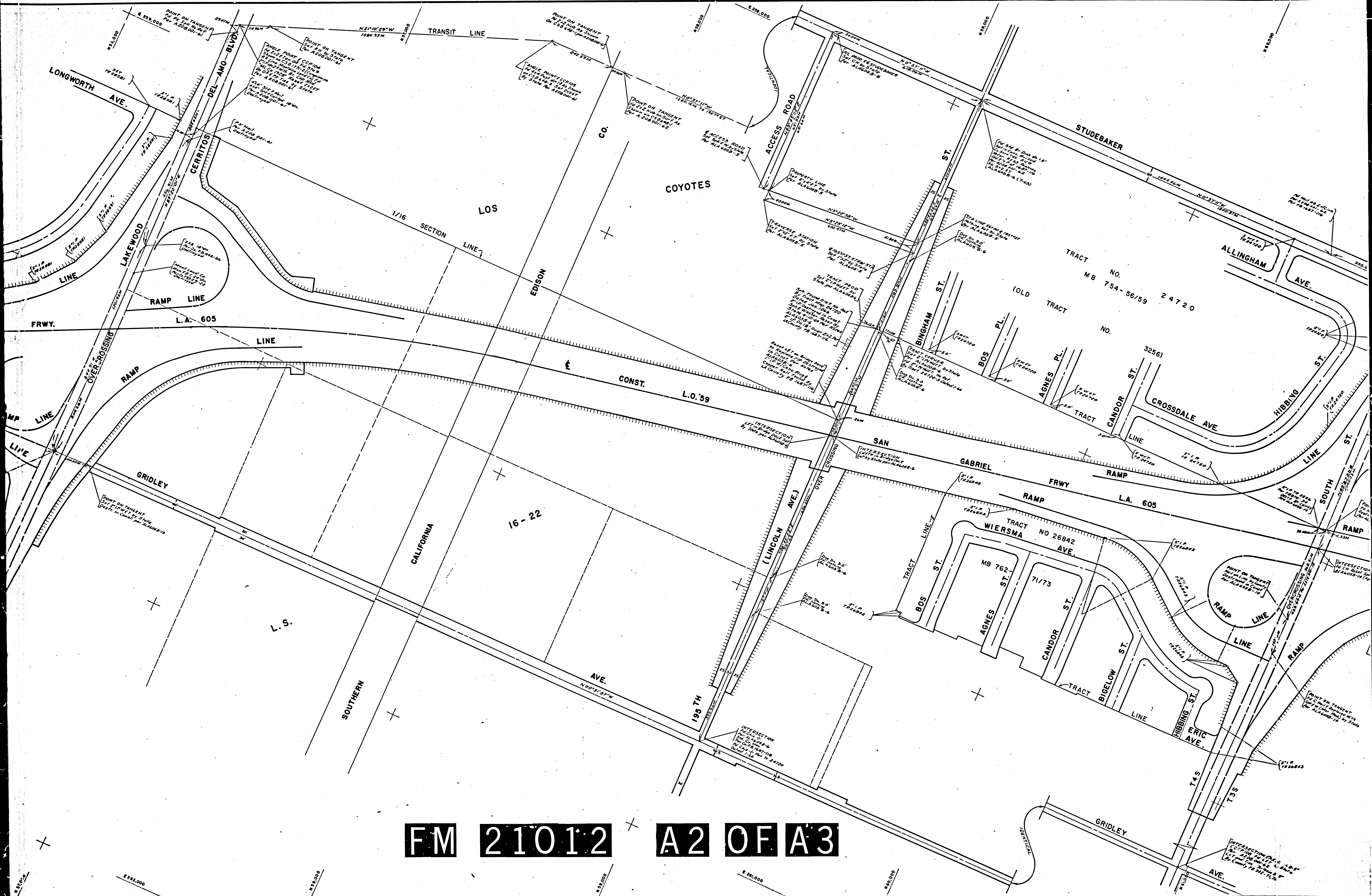


F.M. 21012

SEE DOCUMENTATION MAP NO. M.F.-4007-1

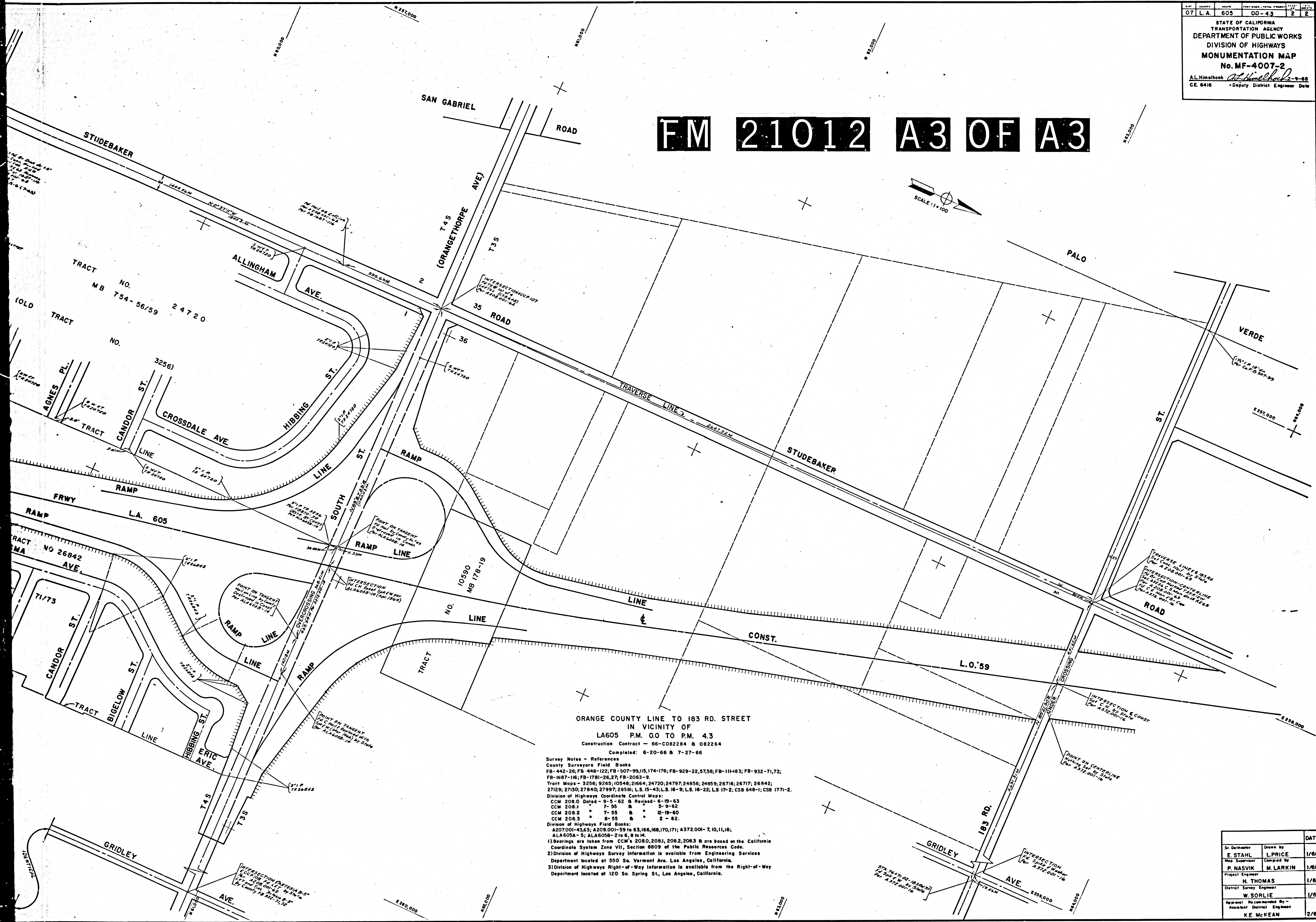
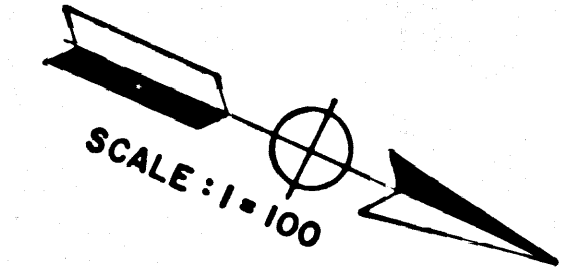


FM 21012 A1 OF A3



FM 21012 A2 OF A3

FM 21012 A3 OF A3



ORANGE COUNTY LINE TO 183 RD. STREET
 IN VICINITY OF
 LA605 P.M. 0.0 TO P.M. 4.3
 Construction Contract - 66-C082284 & 082264
 Completed: 6-20-66 & 7-27-66

Survey Notes - References
 County Surveyors Field Books
 FB-442-26; FB-448-122; FB-507-99,115,174-176; FB-929-22,57,58; FB-111-63; FB-932-71,72;
 FB-1687-116; FB-1781-26,27; FB-2063-9
 Tract Maps - 3256; 9265; 10548; 21664; 24720; 24797; 24856; 24859; 26716; 26717; 26842;
 27129; 27130; 27840; 27997; 28591; L.S. 15-43; L.S. 16-9; L.S. 16-22; L.S. 17-2; CSB 648-1; CSB 1771-2.
 Division of Highways Coordinate Control Maps:
 CCM 208.0 Dated - 9-5-62 & Revised - 6-19-63
 CCM 208.1 " 7-55 " " 5-9-62
 CCM 208.2 " 7-55 " " 12-19-60
 CCM 208.3 " 8-55 " " 2-62.
 Division of Highways Field Books:
 A207001-43,63; A208 001-59 to 63,166,168,170,171; A372 001-7,10,11,16;
 ALA605A-5; ALA605B-2 to 6, 8 to 14.
 1) Bearings are taken from CCM's 208.0, 208.1, 208.2, 208.3 & are based on the California
 Coordinate System Zone VII, Section 8809 of the Public Resources Code.
 2) Division of Highways Survey Information is available from Engineering Services
 Department located at 550 So. Vermont Ave. Los Angeles, California.
 3) Division of Highways Right-of-Way Information is available from the Right-of-Way
 Department located at 120 So. Spring St., Los Angeles, California.

		DATE
Sr. Designer	Drawn by	
E. STAHL	L. PRICE	1/68
Map Engineer	Checked by	
P. NASVIK	M. LARKIN	1/68
Project Engineer		
H. THOMAS		1/68
District Survey Engineer		
W. SORLIE		1/68
Approval Recommended By -		
Assistant District Engineer		
K.E. MCKEAN		2/68