

BEARINGS DISTANCES AND COORDINATES SHOWN UPON THESE MAPS CONFORM WITH THE CALIFORNIA COORDINATE SYSTEM, ZONE 7, BASED UPON 1962 ADJUSTED VALUES PUBLISHED BY THE LOS ANGELES COUNTY ENGINEER'S OFFICE AND SUPPLEMENTED BY ADDITIONAL WORK DONE IN 1965-66. THE AREA HAS BEEN SUBJECTED TO BOTH HORIZONTAL AND VERTICAL LAND MOVEMENTS. ALL COORDINATE CONTROL STATIONS USED IN THIS SURVEY WHICH MOVED SUBSTANTIALLY DURING THE PERIOD 1962-1966 WERE REPOSITIONED BY PRECISE GEODIMETER TRAVERSE BETWEEN STABLE CONTROL STATIONS. BEARINGS AND DISTANCES SHOWN IN BRACKETS ARE VALUES COPIED FROM OFFICIAL RECORDS AND HAVE BEEN ADDED FOR CONVENIENCE ONLY.

- NOTES:
- Indicates a set point as described in each instance.
 - Indicates a found point as described in each instance.

APPROVED 29 February, 1968.
STATE LANDS COMMISSION
By: *J. J. Harting*
Executive Officer

This map correctly represents a survey made by me or under my direction in compliance with the requirements of the Land Surveyors Act at the request of State Lands Commission, State of California.
Francois D. Uzès
FRANCOIS D. UZES, L.S. 3175

This map made under my direction, correctly represents the results of a survey made under the direction of F. D. Uzès.
Curtis M. Brown
CURTIS M. BROWN, L.S. 2554

**SURVEY OF THE
COMPROMISE TIDELAND BOUNDARY
ALONG THE OCEAN FRONT, CITY OF LONG BEACH,
CALIFORNIA, BEING IN ACCORDANCE WITH THE BOUNDARY
DESCRIPTION FOUND IN SECTION 7, CHAPTER 138, STATUTES
OF 1964, FIRST EXTRAORDINARY SESSION, STATE OF CALIFORNIA**

STATE LANDS DIVISION
STATE LANDS COMMISSION STATE OF CALIFORNIA

SURVEY COMPLETED
FEBRUARY 1968

F.M.	21015
SHT.	1 OF 21

E-W 51012-4

SHEET 4 OF 21 SHEET

N. 4 025 500

7091

TRACT LOT 11

TERMINAL ISLAND

12

M.R. 52, P.P. 13-18

23RD AVE.

19

N. 4 025 000

LOT

RAILROAD AVE.

NO.

SAN PEDRO

24TH AVE.

BLVD.

SEE SHEET 5

FREEWAY

R. S. 51 - 13

2880.01'

EAST 16

23RD AVE.

(N 70° 43' 01" E 2879.679')

SEASIDE

N 70° 36' 20" E

SEE SHEET 3

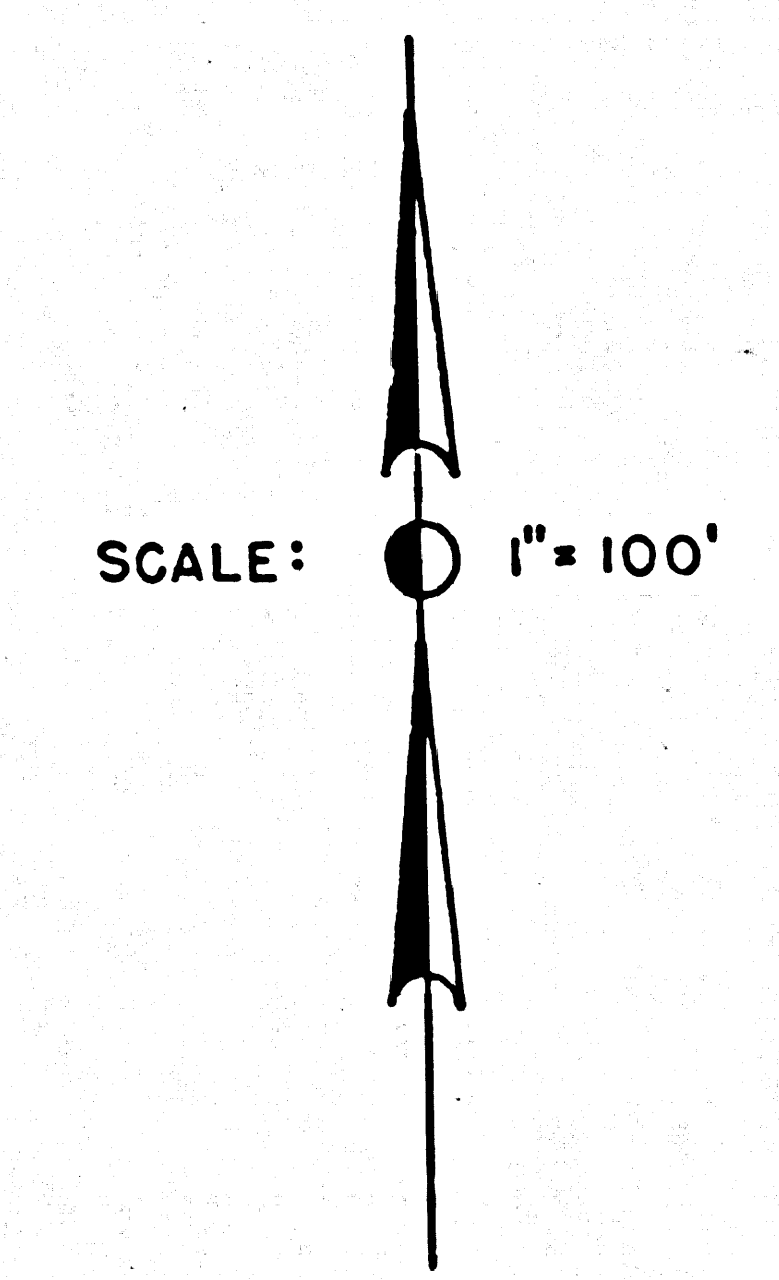
X=4215 580.858 - T.L.B.
Y=4024 385.566
SET "T" IRON & TAG
IN CONC.

E. 4216 000

E. 4216 500

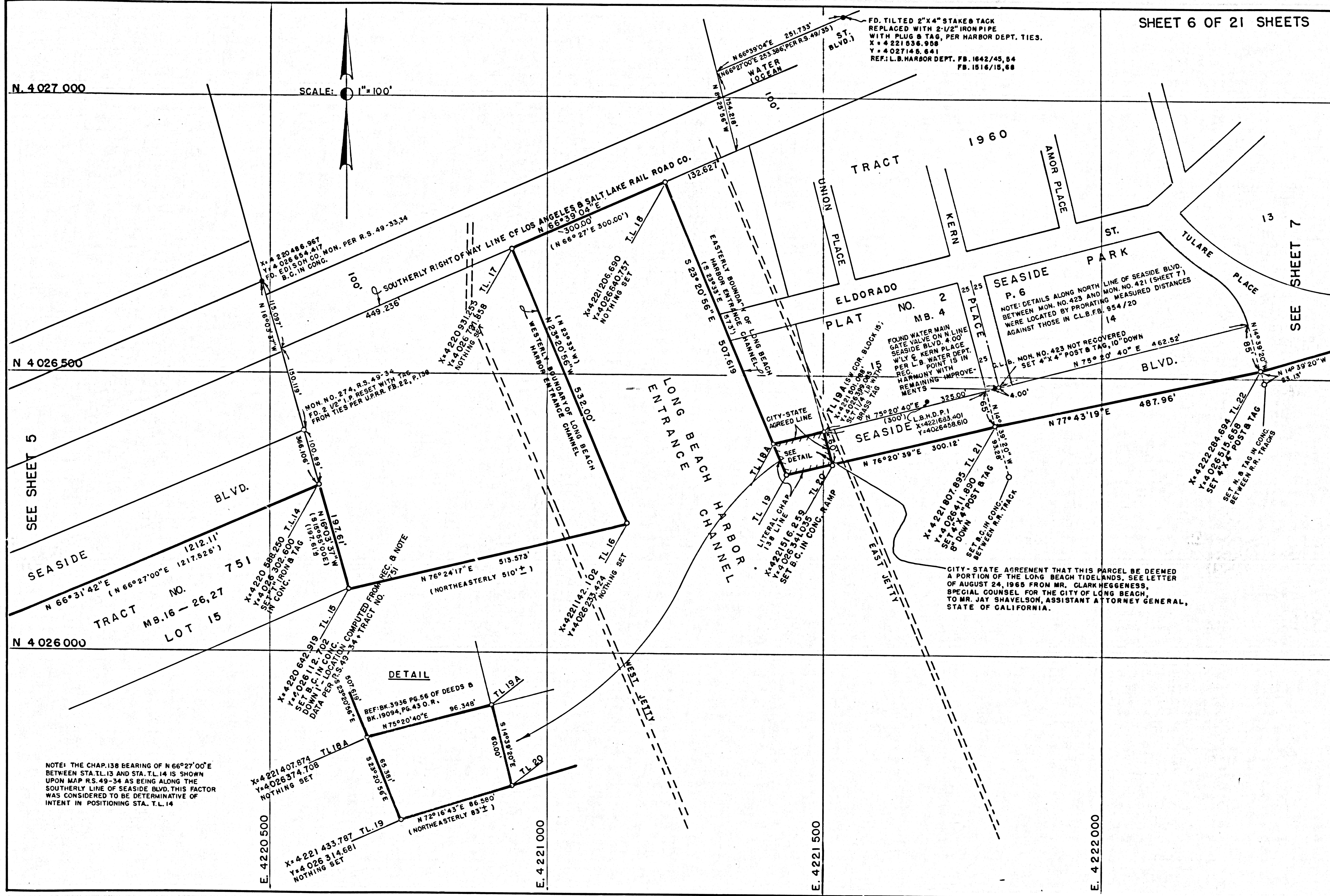
E. 4217 000

E. 4217 500



4-21012-M.F

F.M. 21015
SHT. 4 OF 21



N 4 027 000

SCALE: 1" = 100'

N 4 026 500

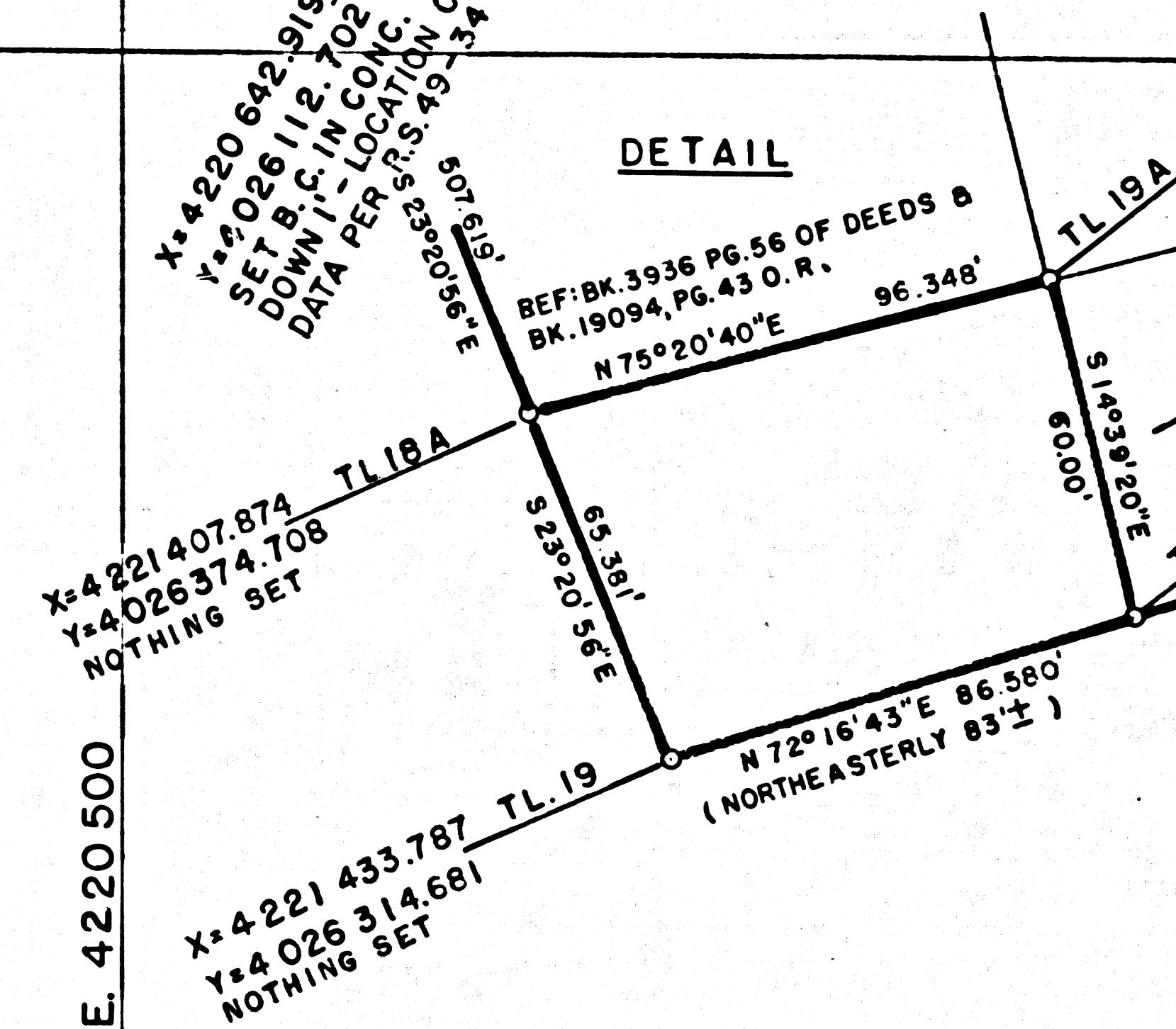
N 4 026 000

NOTE: THE CHAP. 138 BEARING OF N 66°27'00"E BETWEEN STA. TL 13 AND STA. TL 14 IS SHOWN UPON MAP R.S. 49-34 AS BEING ALONG THE SOUTHERLY LINE OF SEASIDE BLVD. THIS FACTOR WAS CONSIDERED TO BE DETERMINATIVE OF INTENT IN POSITIONING STA. T.L. 14

SEE SHEET 5

SEASIDE TRACT NO. 751 MB. 16 - 26, 27 LOT 15

DETAIL



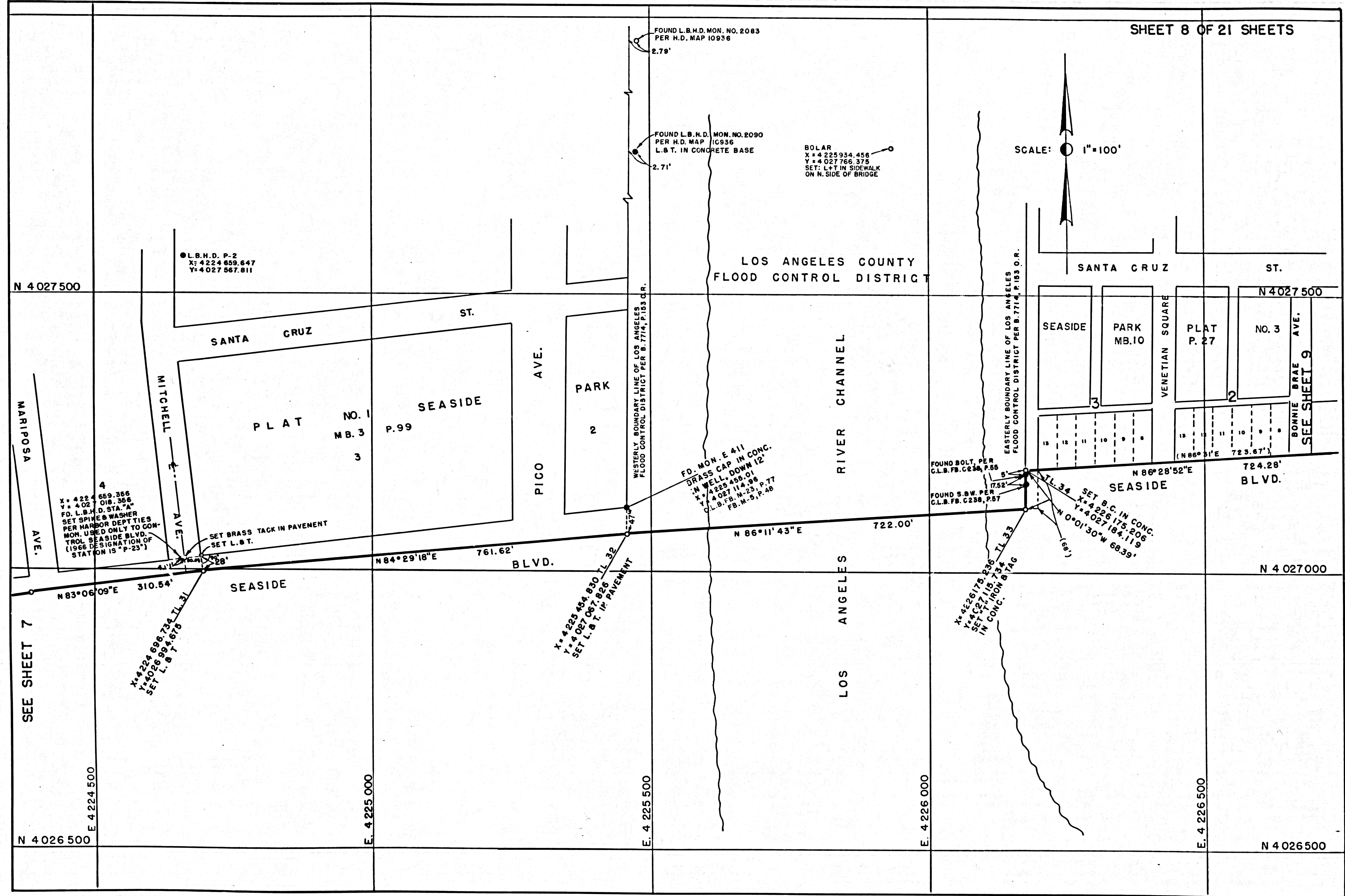
E. 4221 000

E. 4221 500

E. 4222 000

F.M. 21015

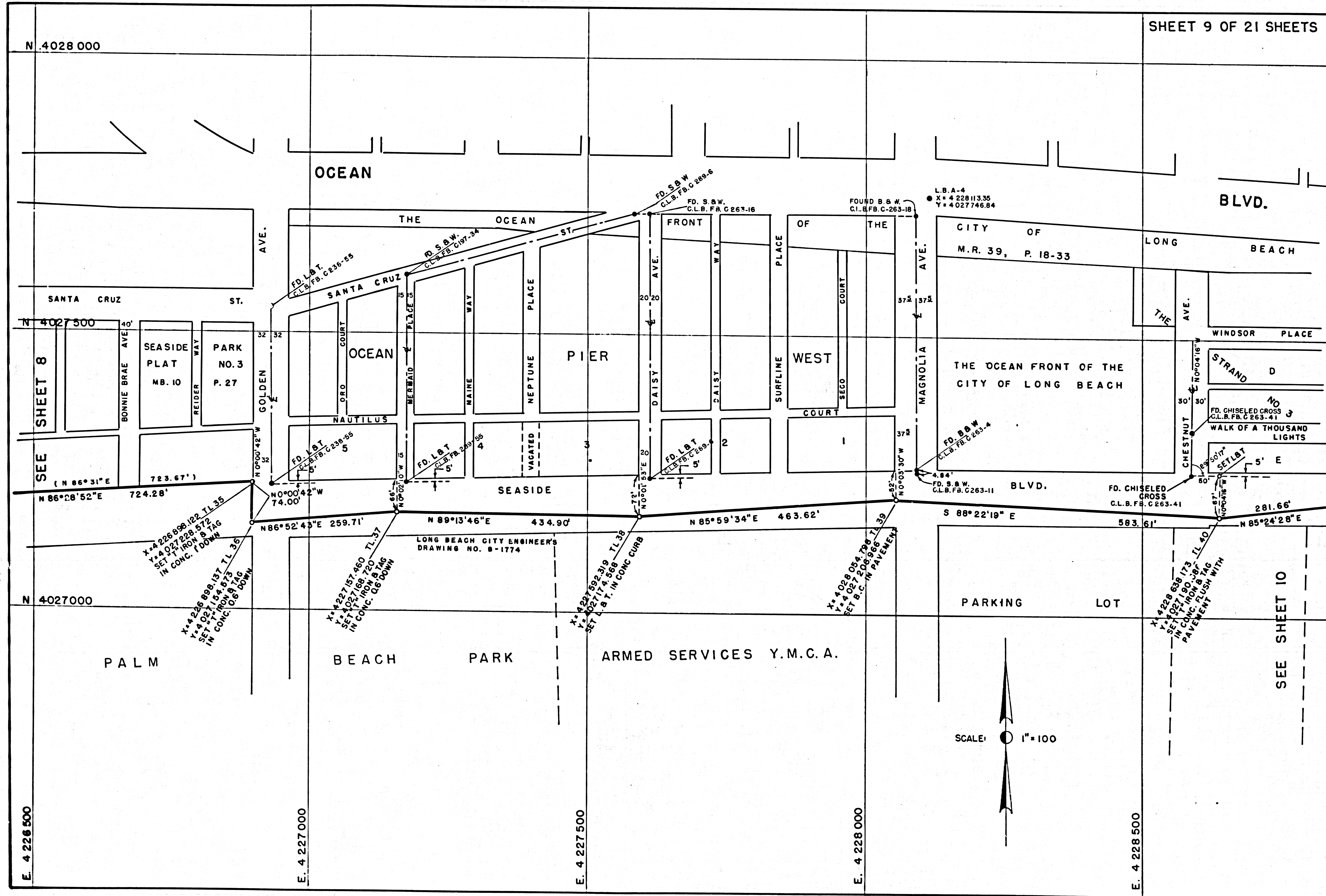
SHT. 6 OF 21



F.M. 21015
 SHT. 8 OF 21

E.M. 21012-9

SHEET 9 OF 21 SHEETS



N 4028 000

N 4027 500

N 4027 000

E. 4 226 500

E. 4 227 000

E. 4 227 500

E. 4 228 000

E. 4 228 500

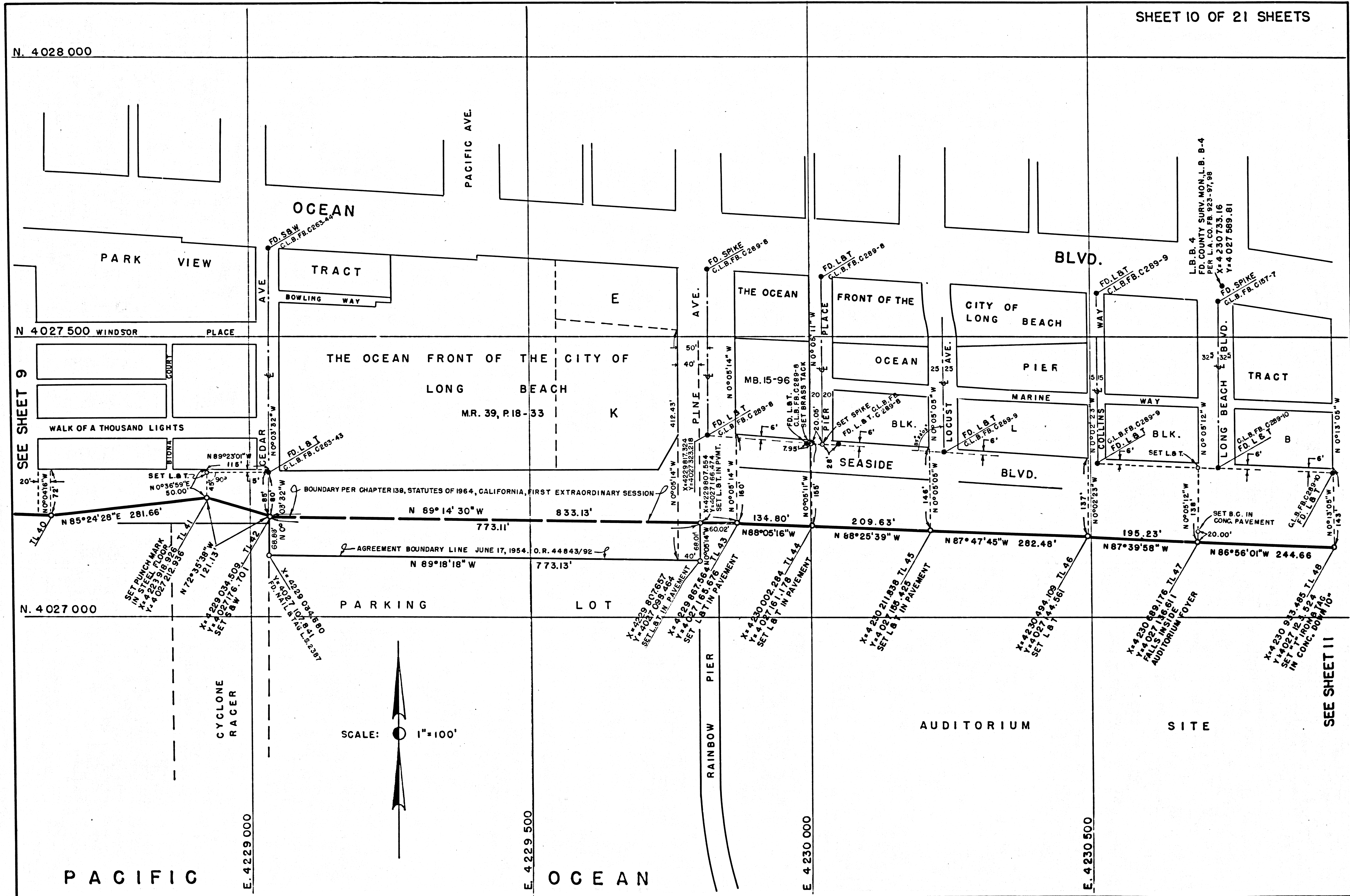
SEE SHEET 8

SEE SHEET 10

F.M. 21015

SHT. 9 OF 21

9-21012.M.F



F.M.	21015
SHT.	10 OF 21

E.M. 51012-II

SHEET 11 OF 21 SHEETS

N. 4 028 000

N. 4 027 500

N. 4 027 000

AUDITORIUM SITE

SEE SHEET 10

E. 4 231 000

E. 4 231 500

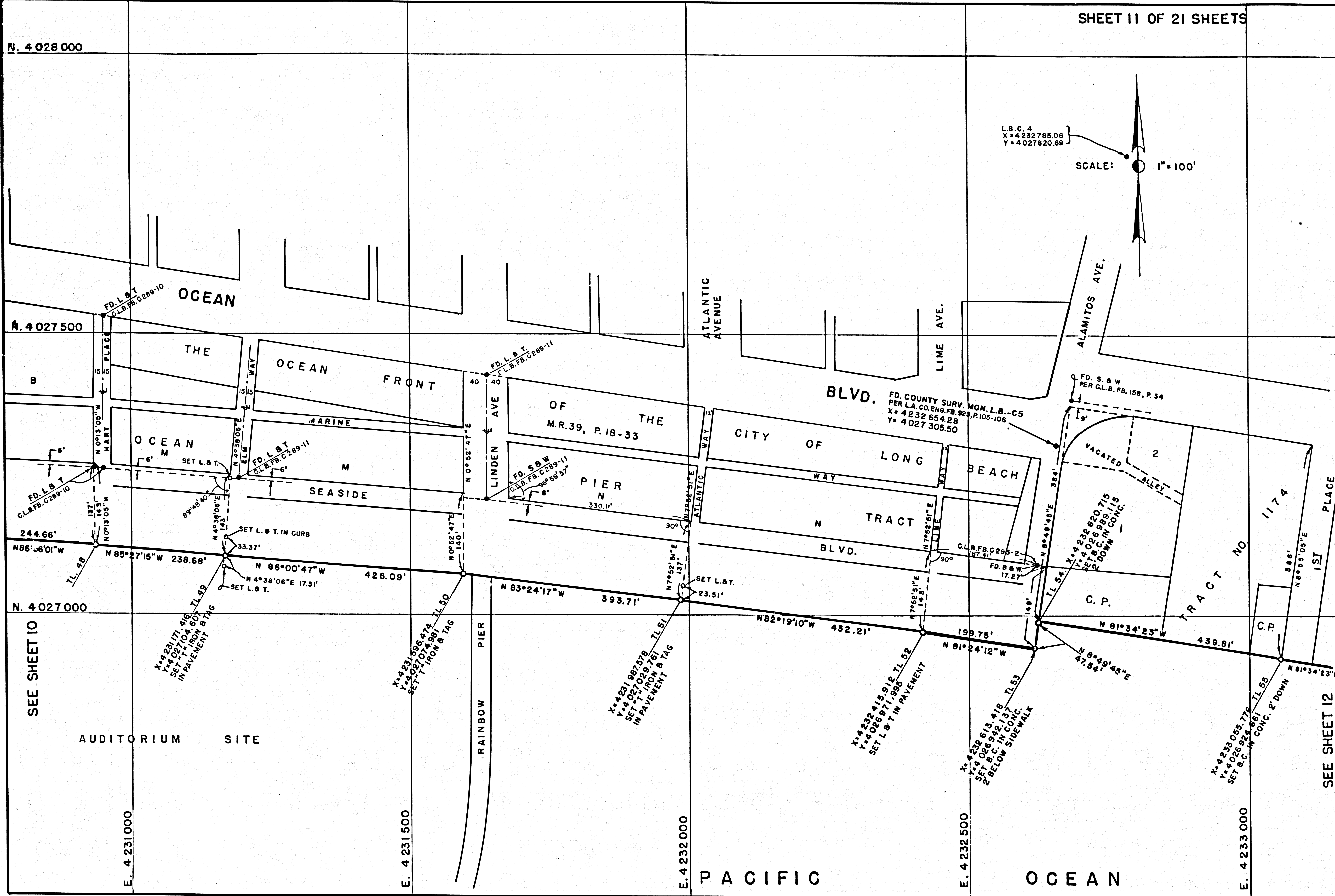
E. 4 232 000

E. 4 232 500

E. 4 233 000

PACIFIC

OCEAN



L.B.C. 4
X = 4232785.06
Y = 4027820.68

SCALE: 1" = 100'

FD. S. & W.
PER CL.B. FB. 158, P. 34

FD. COUNTY SURV. MON. L.B. - C5
PER L.A. CO. ENG. FB. 927, P. 105-106
X = 4232654.28
Y = 4027305.50

M.R. 39, P. 18-33

VACATED ALLEY

TRACT NO 1174

X = 42338820.715
Y = 4026989.115
SET DOWN CONC.

C.P.

TRACT NO 1174

C.P.

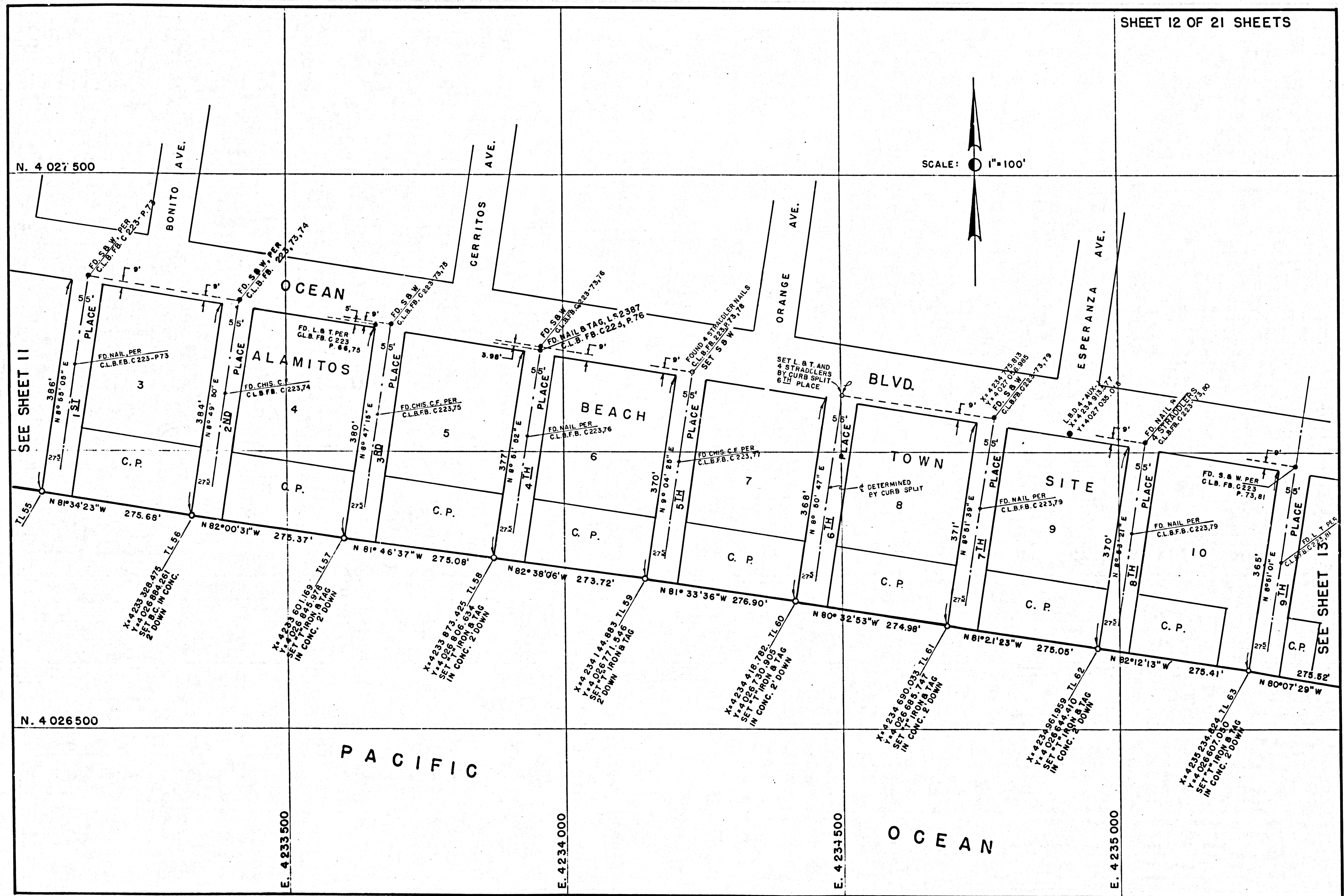
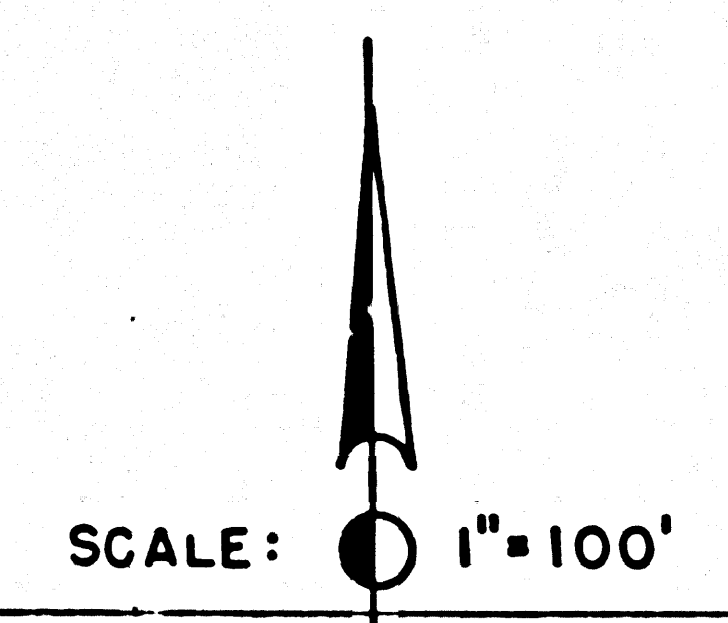
TRACT NO 1174

X = 4233055.776
Y = 4026924.661
SET B.C.M. CONC. 2' DOWN

SEE SHEET 12

F.M.	21015
SHT.	11 OF 21

11-21015.M.F



N. 4 027 500

SEE SHEET 11

N. 4 026 500

E. 4 233 500

E. 4 234 000

E. 4 234 500

E. 4 235 000

F.W.S.1012-15

F.M. 21015
SHT. 12 OF 21

N. 4 027 500

N. 4 027 000

N. 4 026 500

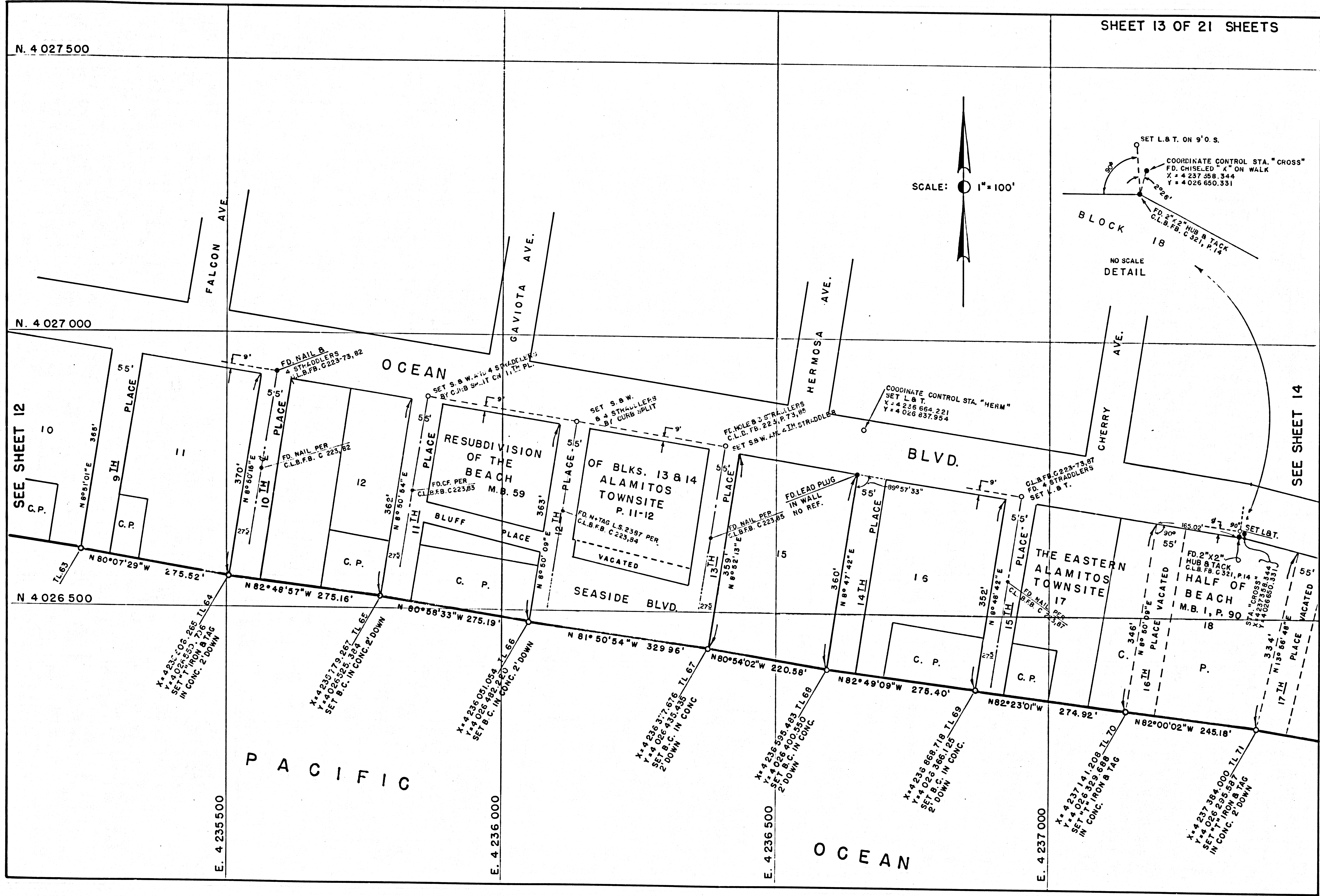
E. 4 235 500

E. 4 236 000

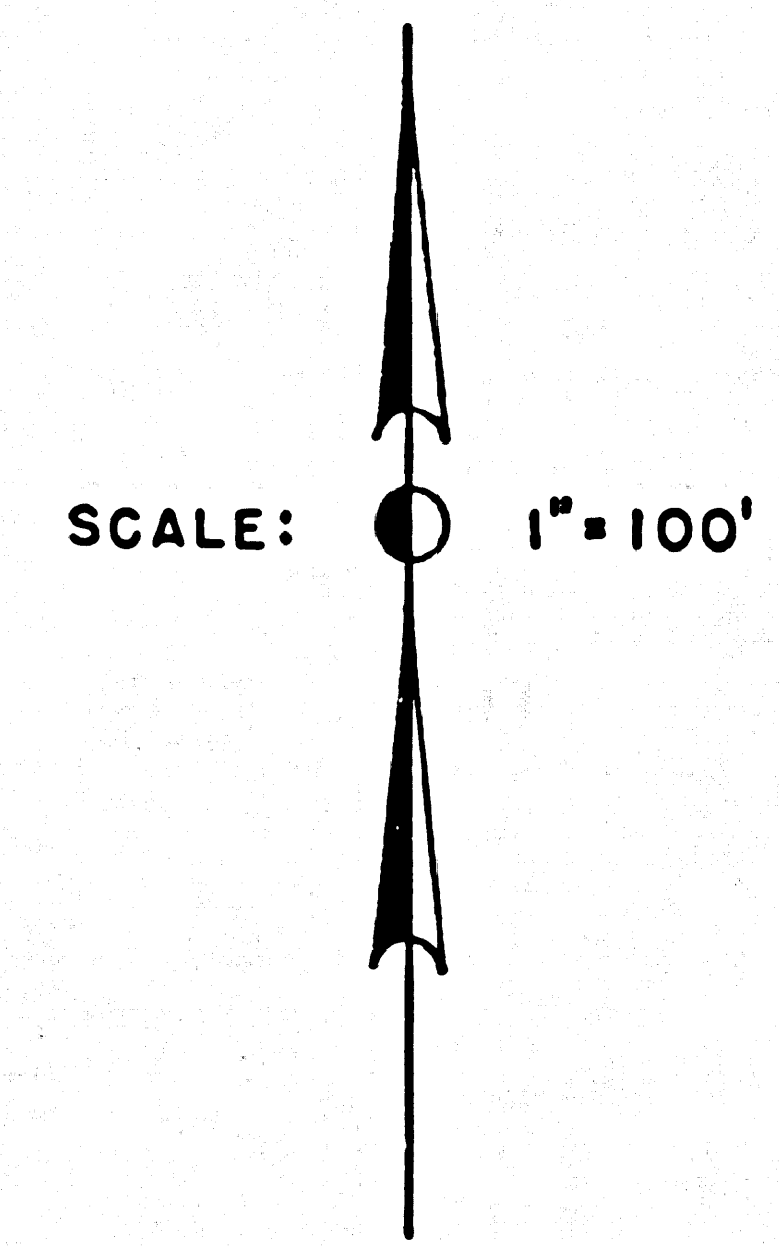
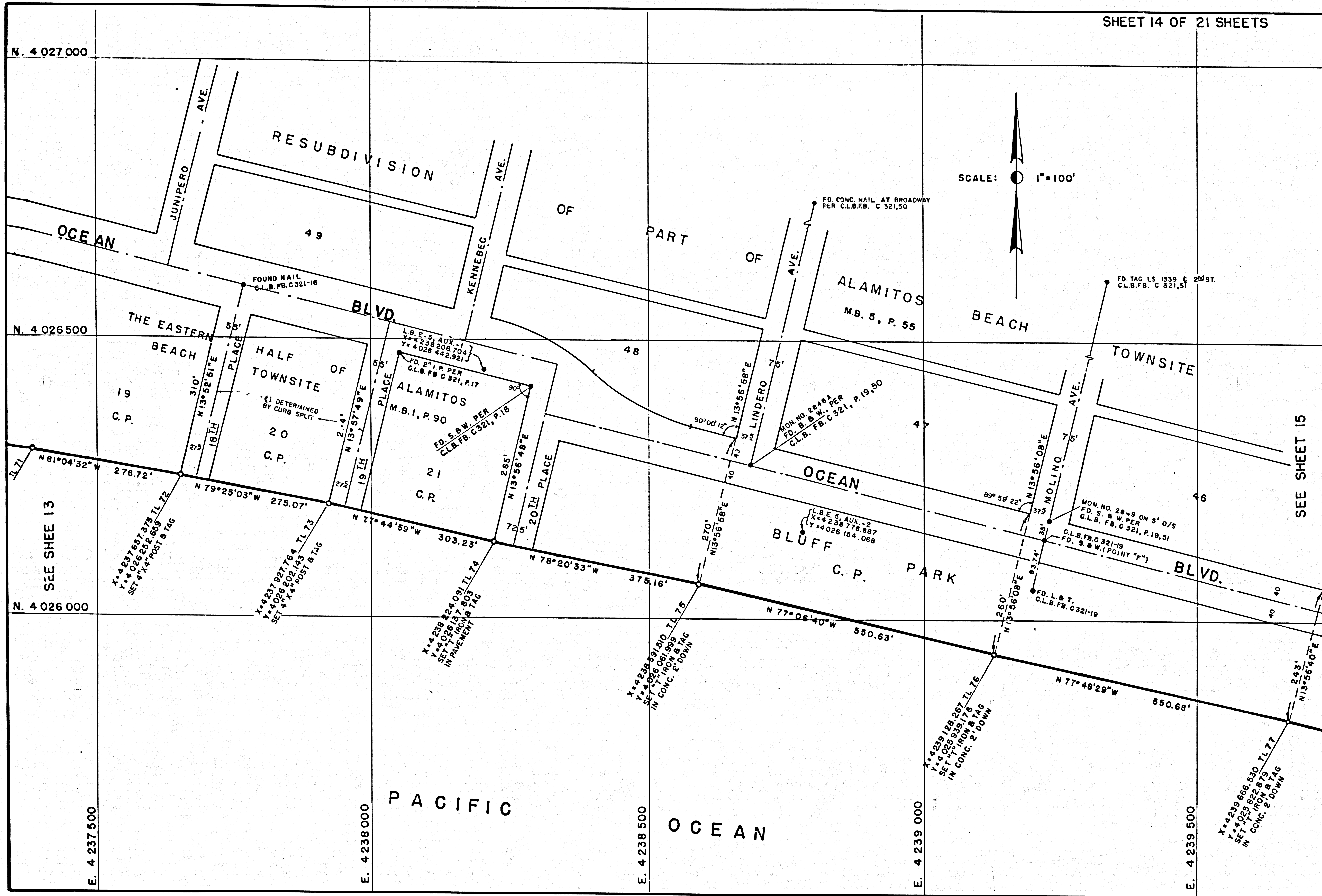
E. 4 236 500

E. 4 237 000

E.W. 51012-13



F.M.	21015
SHT.	13 OF 21



N. 4 027 000

N. 4 026 500

N. 4 026 000

E. 4 237 500

E. 4 238 000

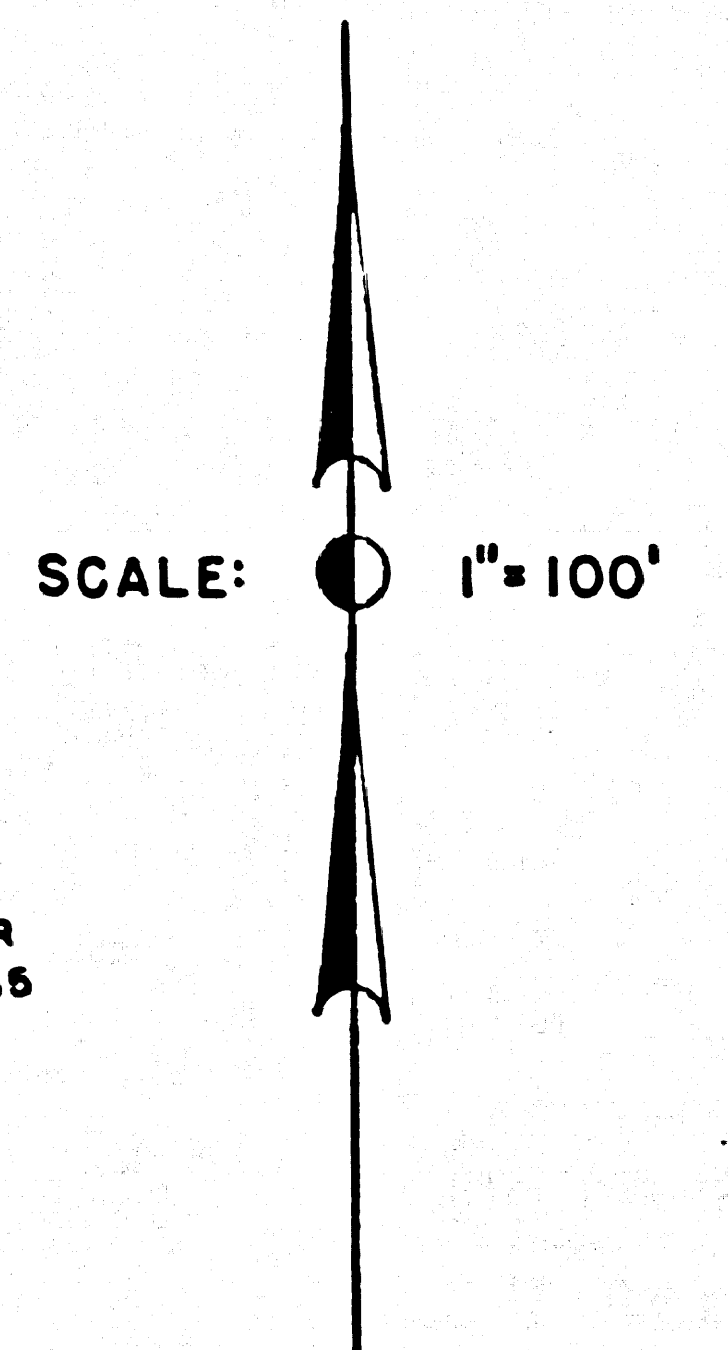
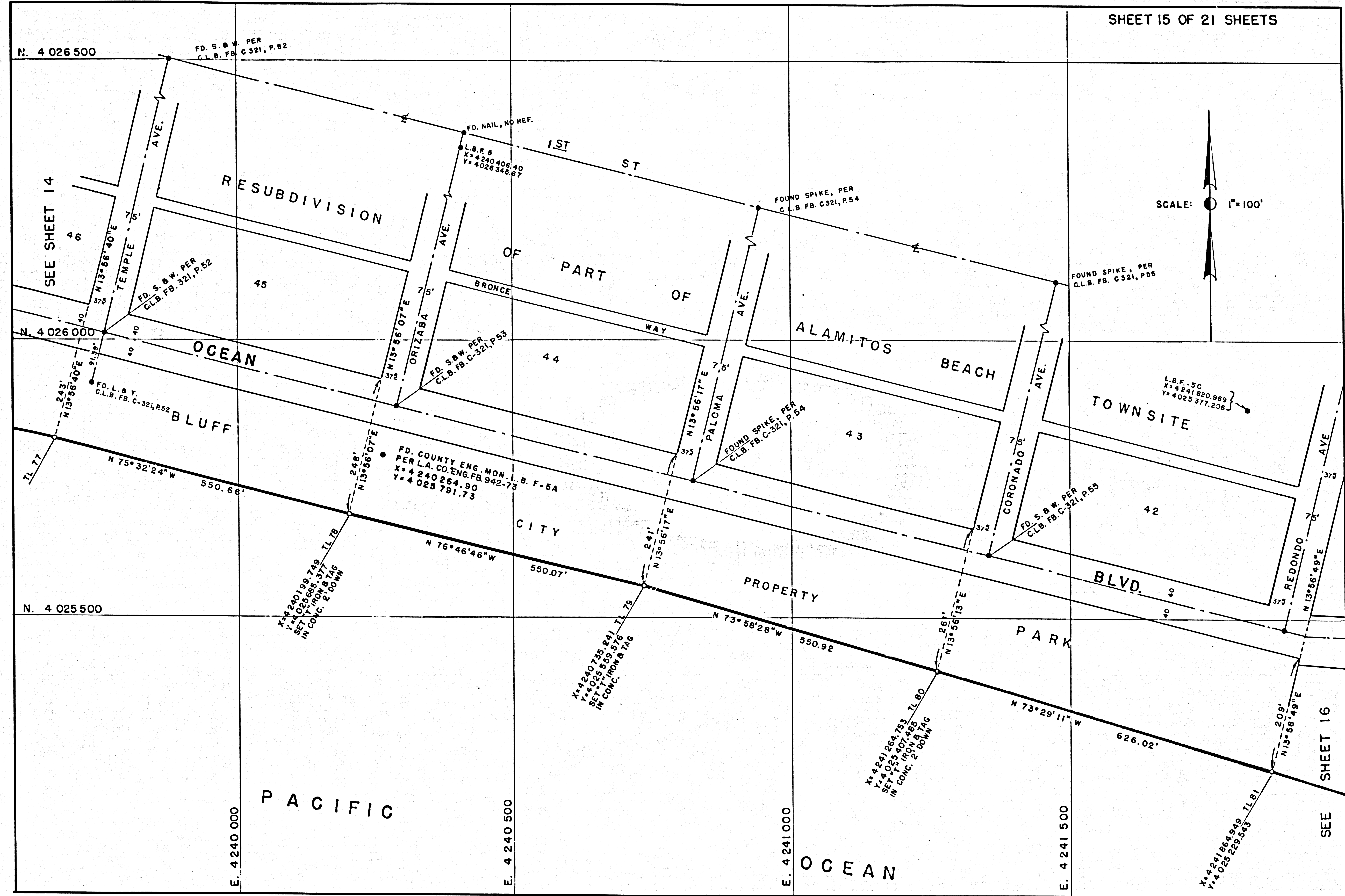
E. 4 238 500

E. 4 239 000

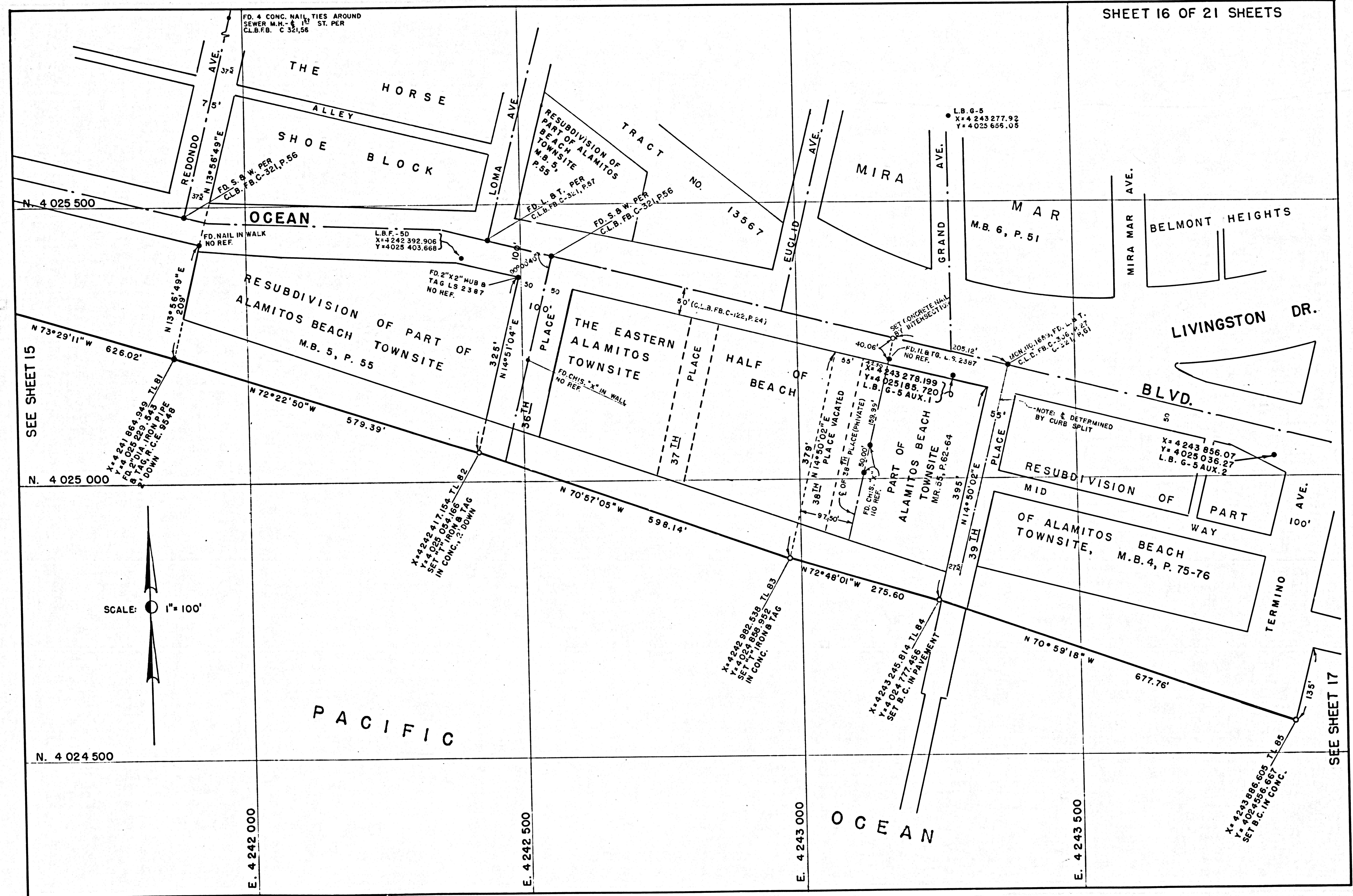
E. 4 239 500

SEE SHEET 15

F.M.	21015
SHT.	14 OF 21



F.M. 21015
SHT. 15 OF 21

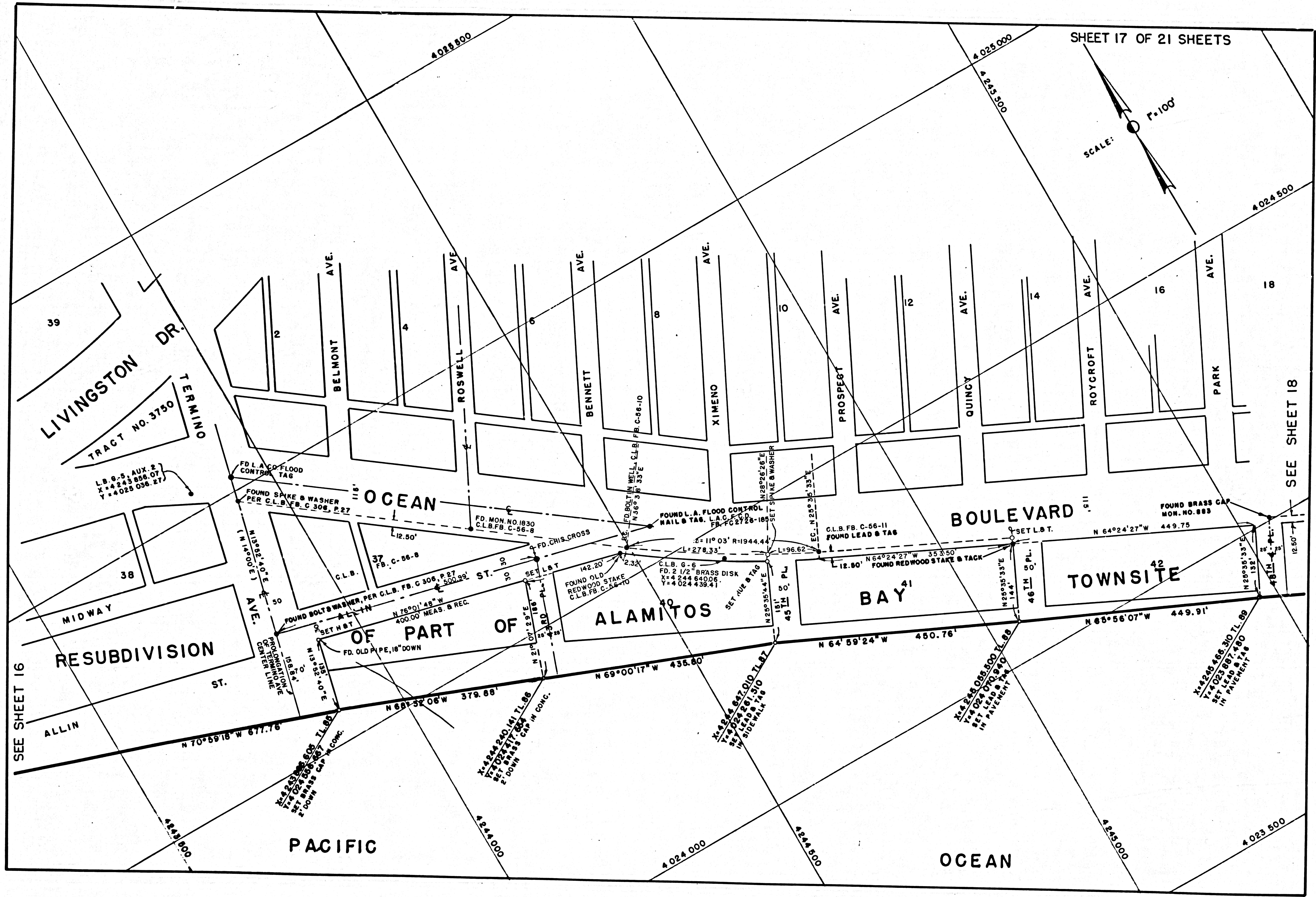
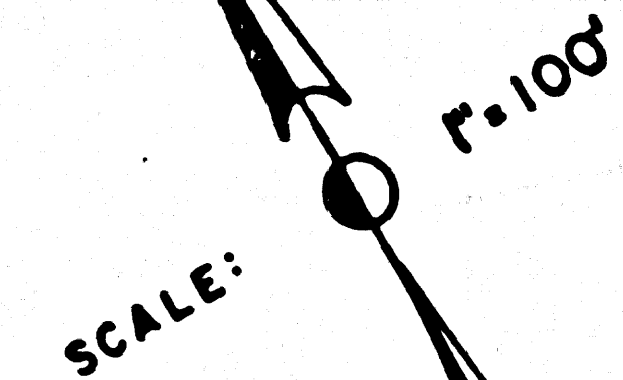


F.M. 21015

SHT. 16 OF 21

E-W 51012-11

SHEET 17 OF 21 SHEETS

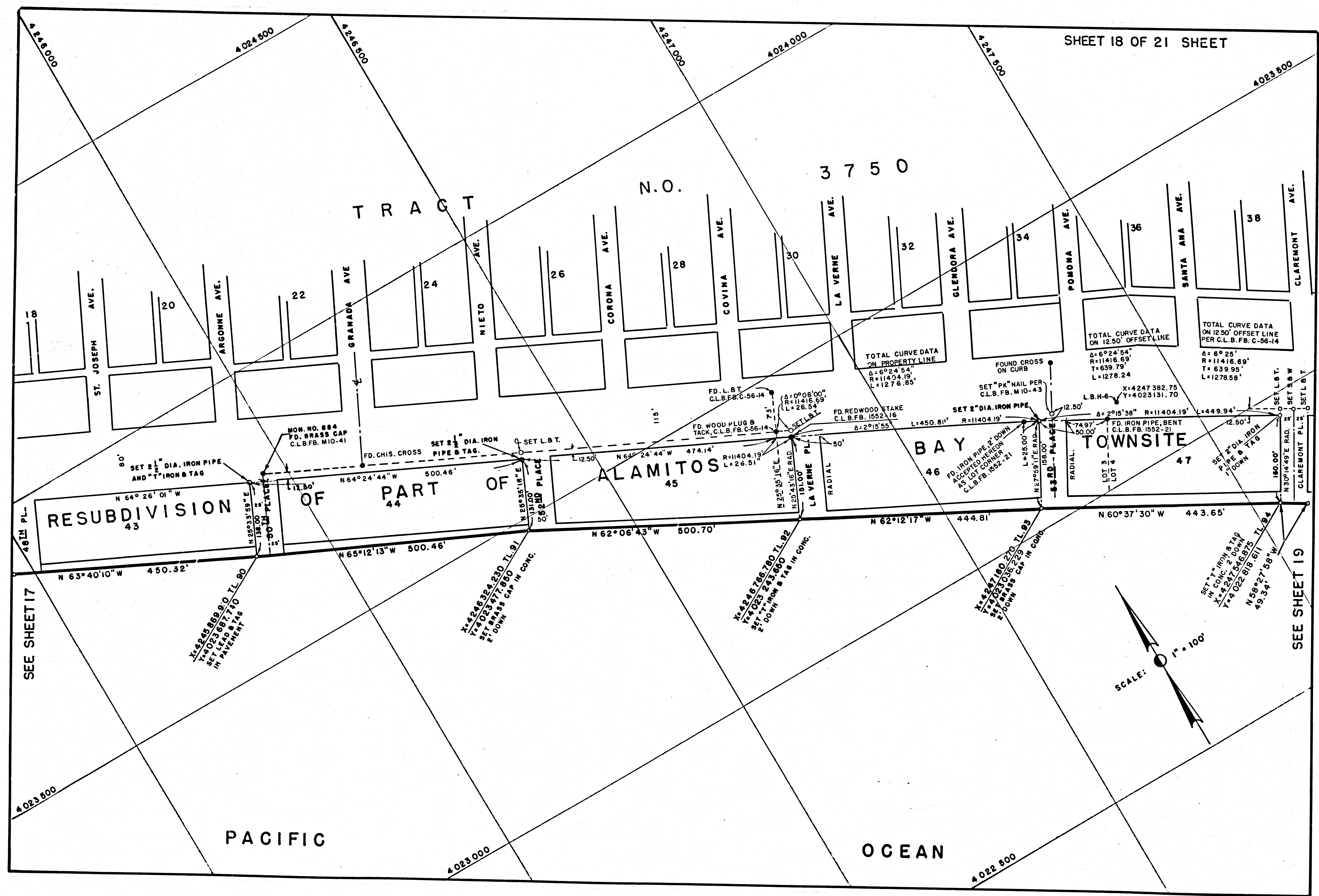


SEE SHEET 16

SEE SHEET 18

F.M.	21015
SHT.	17 OF 21

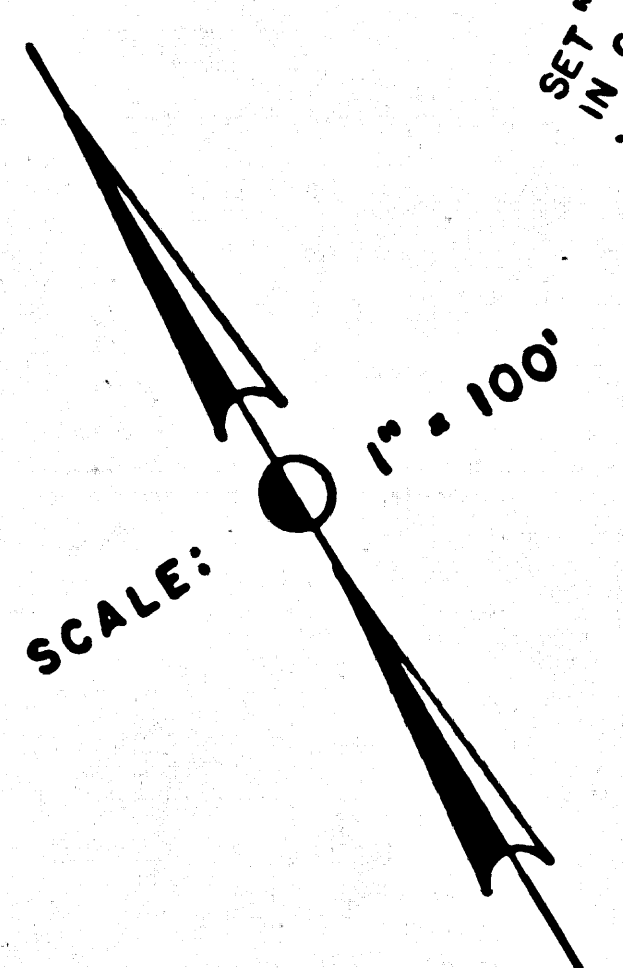
E-W 51012-11



RESUBDIVISION OF PART OF ALAMITOS BAY TOWNSITE

ALAMITOS BAY TOWNSITE

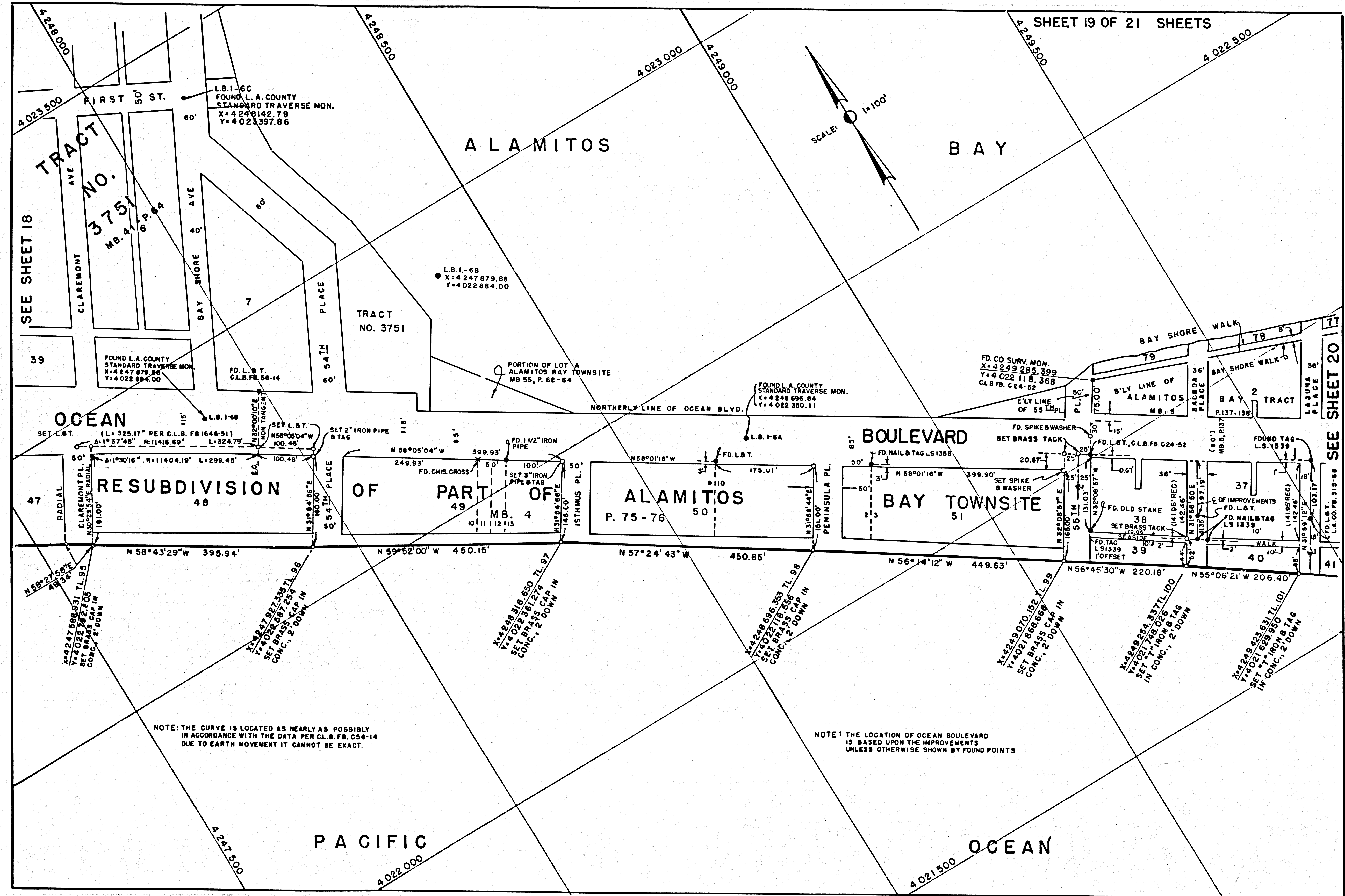
PACIFIC OCEAN



SEE SHEET 17

SEE SHEET 19

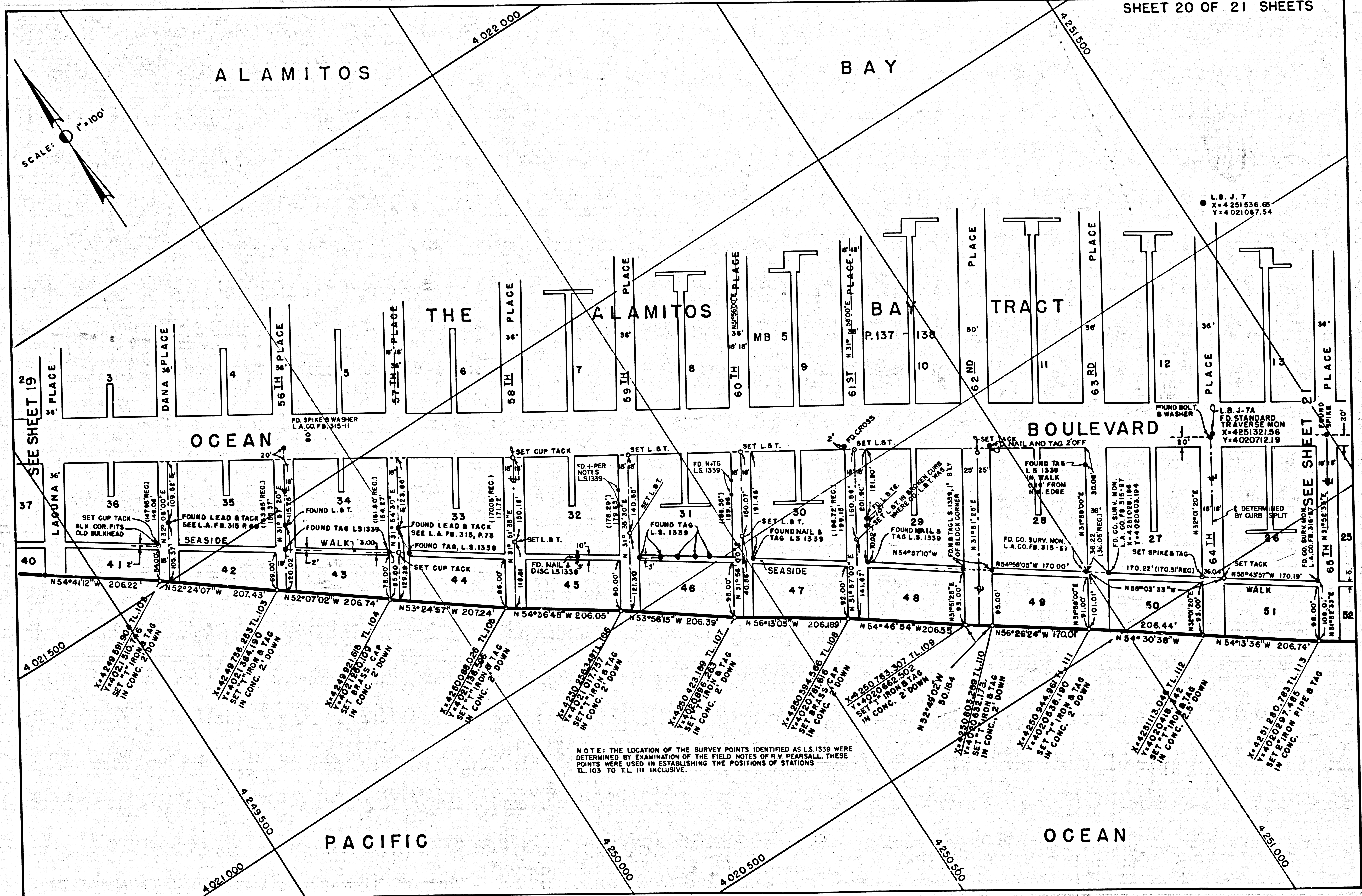
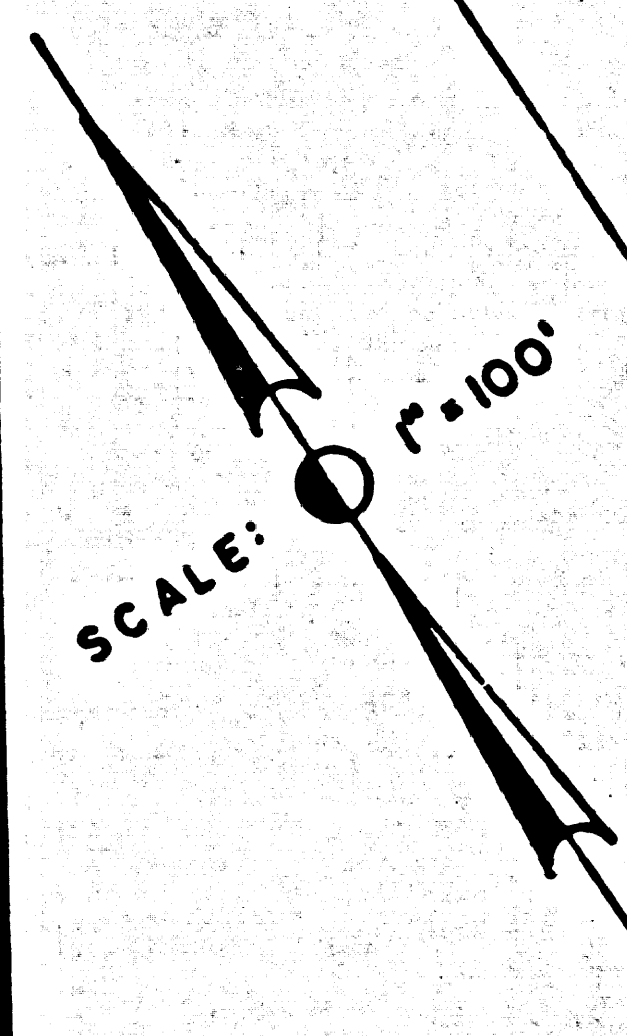
F.M.	21	015
SHT.	18	OF 21



NOTE: THE CURVE IS LOCATED AS NEARLY AS POSSIBLY IN ACCORDANCE WITH THE DATA PER C.L.B. FB. 658-14 DUE TO EARTH MOVEMENT IT CANNOT BE EXACT.

NOTE: THE LOCATION OF OCEAN BOULEVARD IS BASED UPON THE IMPROVEMENTS UNLESS OTHERWISE SHOWN BY FOUND POINTS

F.M.	21015
SHT.	19 OF 21

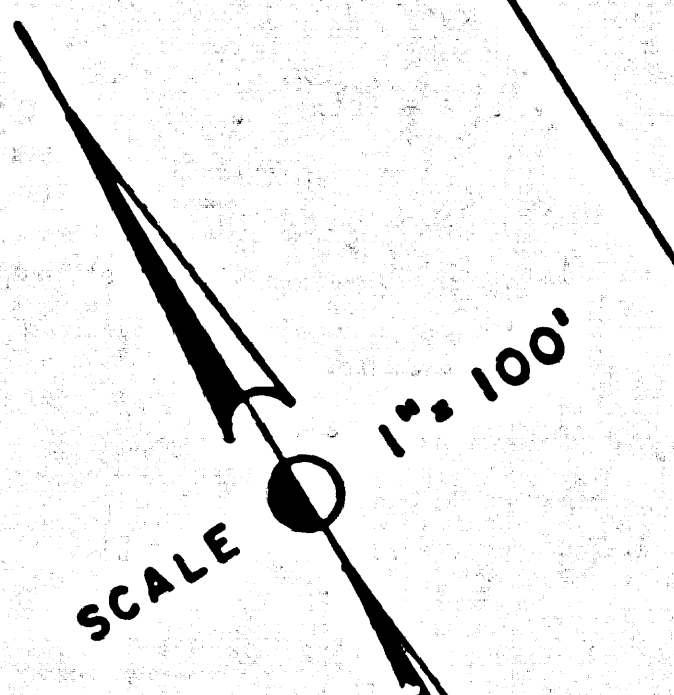


NOTE: THE LOCATION OF THE SURVEY POINTS IDENTIFIED AS L.S. 1339 WERE DETERMINED BY EXAMINATION OF THE FIELD NOTES OF R.V. PEARSALL. THESE POINTS WERE USED IN ESTABLISHING THE POSITIONS OF STATIONS TL 103 TO TL 111 INCLUSIVE.

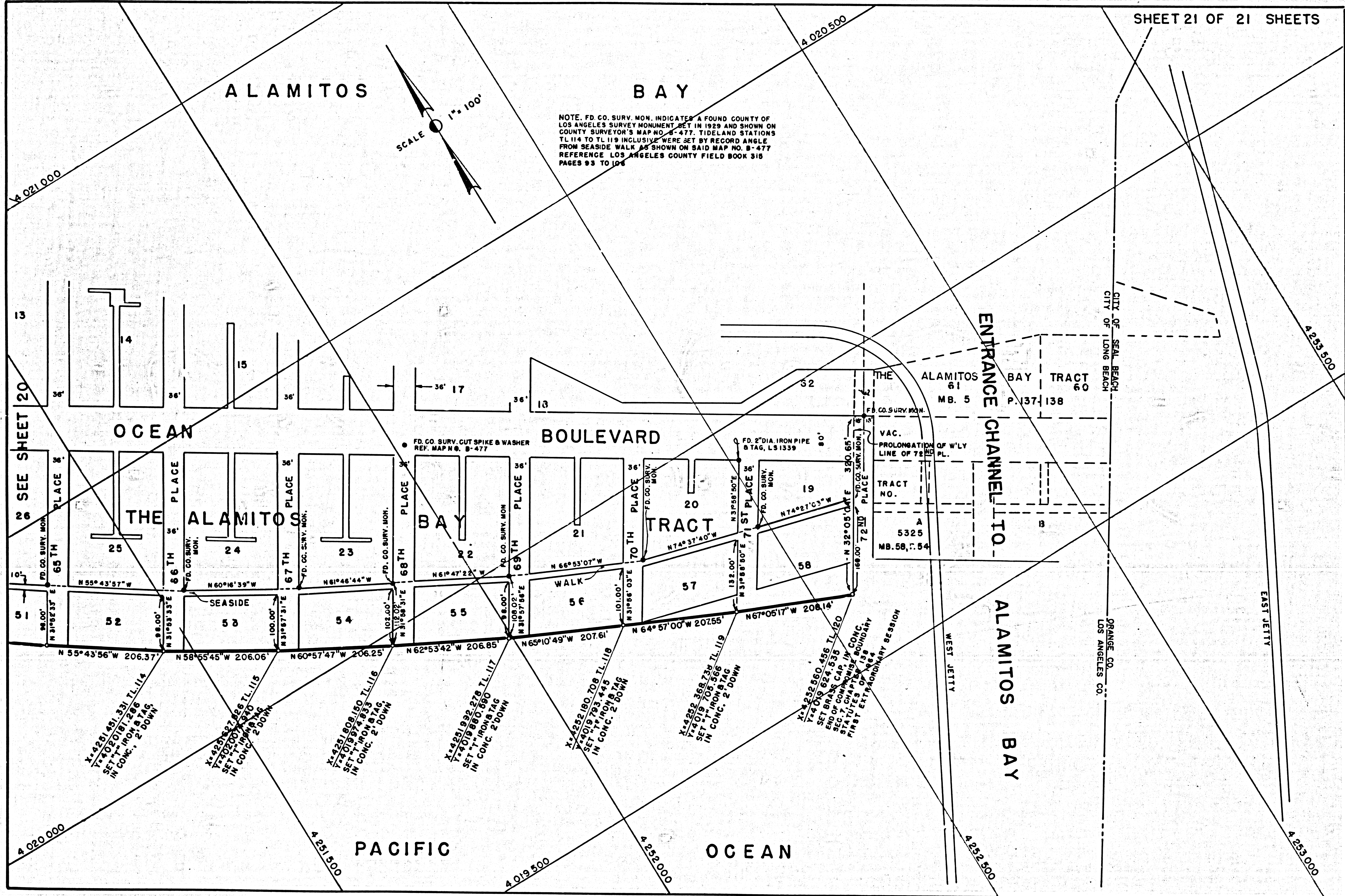
F.M. 21015
SHT. 20 OF 21

ALAMITOS

BAY



NOTE. FD. CO. SURV. MON. INDICATES A FOUND COUNTY OF LOS ANGELES SURVEY MONUMENT SET IN 1929 AND SHOWN ON COUNTY SURVEYOR'S MAP NO. 4-477. TIDELAND STATIONS TL 114 TO TL 119 INCLUSIVE WERE SET BY RECORD ANGLE FROM SEASIDE WALK AS SHOWN ON SAID MAP NO. 4-477 REFERENCE LOS ANGELES COUNTY FIELD BOOK 318 PAGES 93 TO 106



SEE SHEET 20

THE ALAMITOS BAY TRACT
MB. 5 P. 137, 138

VAC.
PROLONGATION OF W'LY
LINE OF 71ST PL.
TRACT
NO. 5325
MB. 58, 7, 54

ENTRANCE CHANNEL TO

ALAMITOS BAY

F.M. 21015
SHT. 21 OF 21