

TABLE POINT
1.71' on M.B. 100-101 set by State
per ALABAMA-30
Point of Tangent
5.21' on M.B. 101-102 set by State
per ALABAMA-30
Point of Intersection
1.71' on M.B. 101-102 set by State
per ALABAMA-30

INTERSECTION
1.71' on M.B. 100-101 set by State
per ALABAMA-30
Point of Tangent
5.21' on M.B. 101-102 set by State
per ALABAMA-30

INTERSECTION
1.71' on M.B. 100-101 set by State
per ALABAMA-30
Point of Tangent
5.21' on M.B. 101-102 set by State
per ALABAMA-30

INTERSECTION
1.71' on M.B. 100-101 set by State
per ALABAMA-30
Point of Tangent
5.21' on M.B. 101-102 set by State
per ALABAMA-30

INTERSECTION
1.71' on M.B. 100-101 set by State
per ALABAMA-30
Point of Tangent
5.21' on M.B. 101-102 set by State
per ALABAMA-30

INTERSECTION
1.71' on M.B. 100-101 set by State
per ALABAMA-30
Point of Tangent
5.21' on M.B. 101-102 set by State
per ALABAMA-30

INTERSECTION
1.71' on M.B. 100-101 set by State
per ALABAMA-30
Point of Tangent
5.21' on M.B. 101-102 set by State
per ALABAMA-30

INTERSECTION
1.71' on M.B. 100-101 set by State
per ALABAMA-30
Point of Tangent
5.21' on M.B. 101-102 set by State
per ALABAMA-30

INTERSECTION
1.71' on M.B. 100-101 set by State
per ALABAMA-30
Point of Tangent
5.21' on M.B. 101-102 set by State
per ALABAMA-30

INTERSECTION
1.71' on M.B. 100-101 set by State
per ALABAMA-30
Point of Tangent
5.21' on M.B. 101-102 set by State
per ALABAMA-30

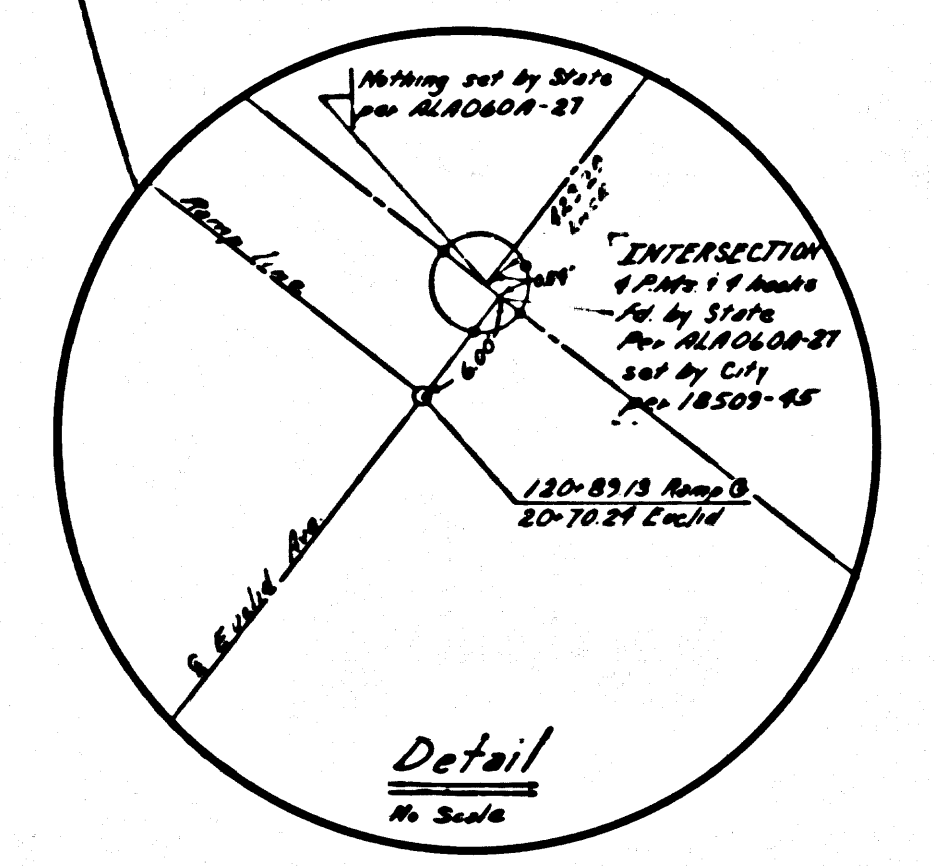
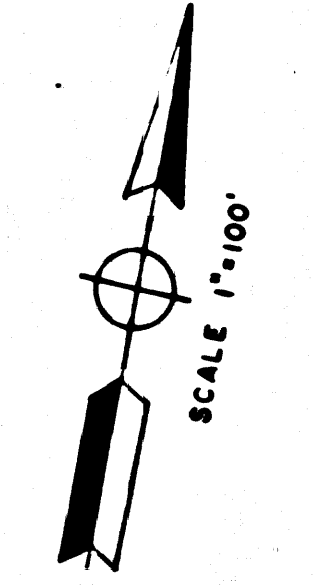
INTERSECTION
1.71' on M.B. 100-101 set by State
per ALABAMA-30
Point of Tangent
5.21' on M.B. 101-102 set by State
per ALABAMA-30

INTERSECTION
1.71' on M.B. 100-101 set by State
per ALABAMA-30
Point of Tangent
5.21' on M.B. 101-102 set by State
per ALABAMA-30

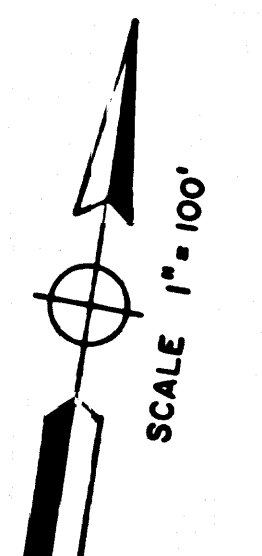
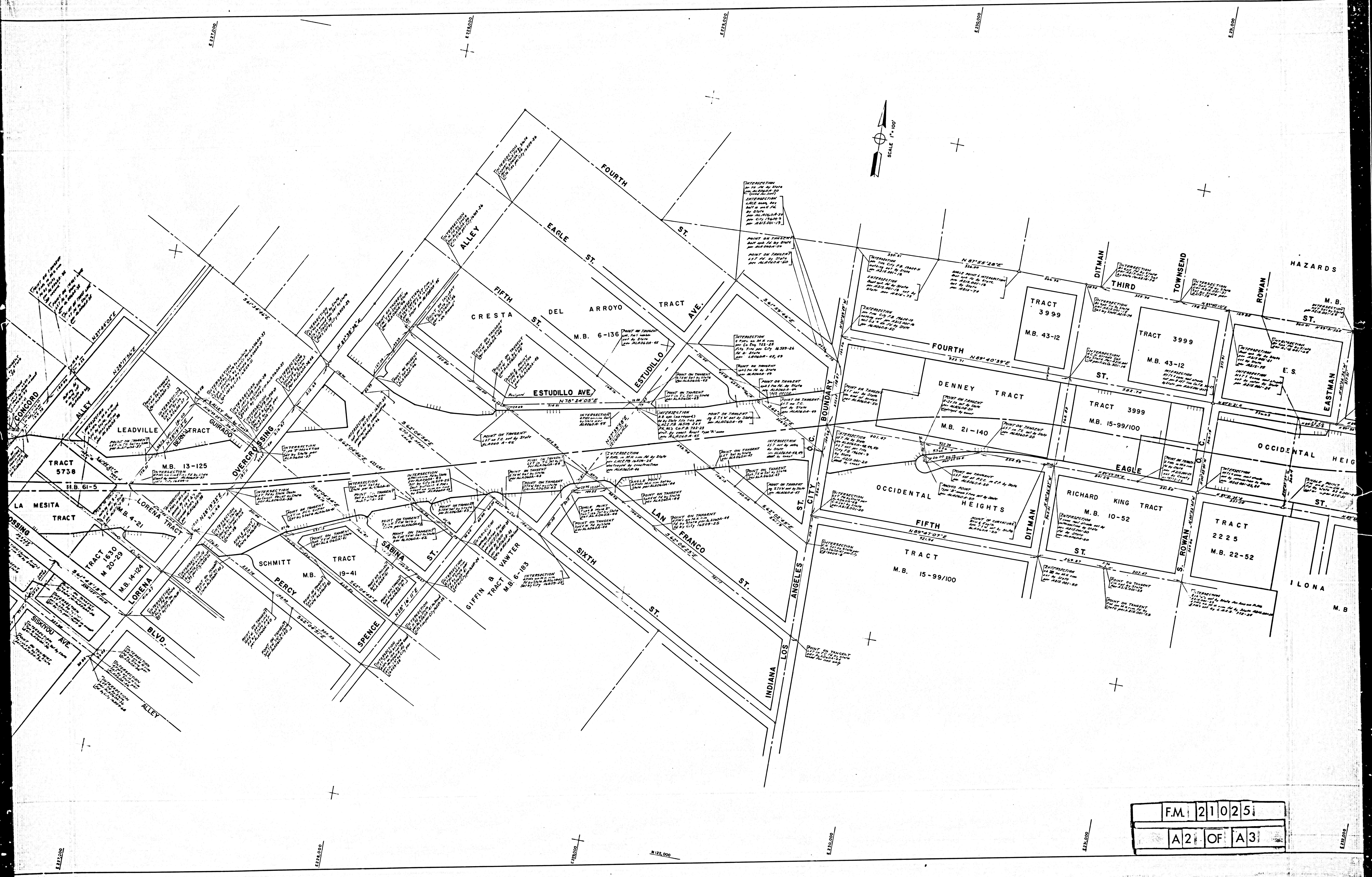
INTERSECTION
1.71' on M.B. 100-101 set by State
per ALABAMA-30
Point of Tangent
5.21' on M.B. 101-102 set by State
per ALABAMA-30

INTERSECTION
1.71' on M.B. 100-101 set by State
per ALABAMA-30
Point of Tangent
5.21' on M.B. 101-102 set by State
per ALABAMA-30

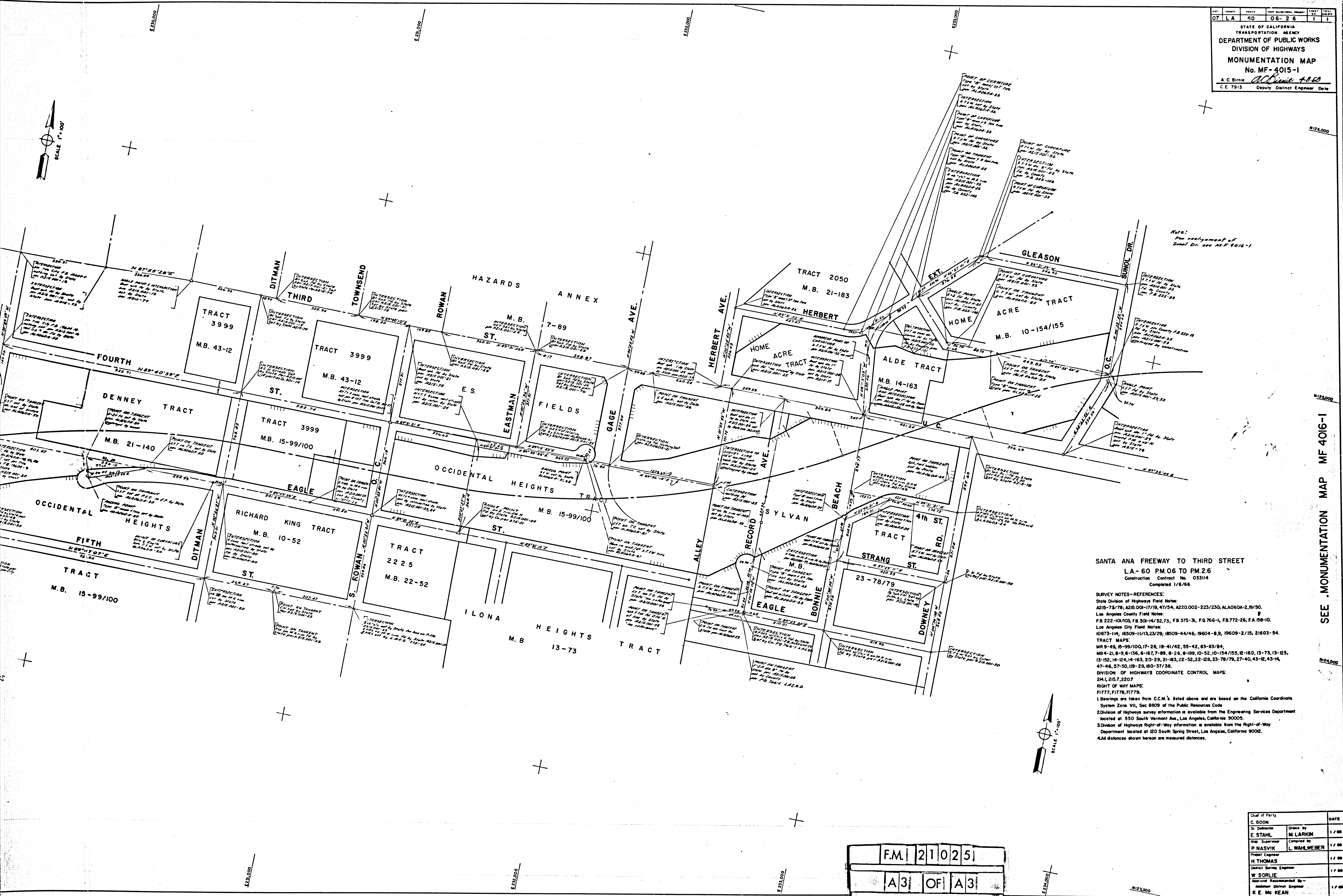
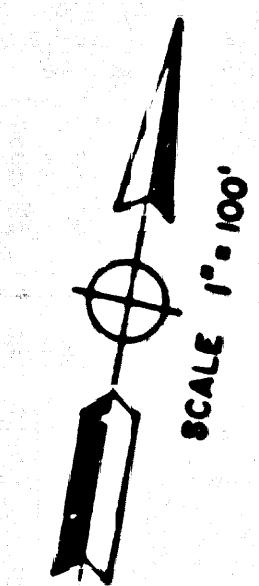
INTERSECTION
1.71' on M.B. 100-101 set by State
per ALABAMA-30
Point of Tangent
5.21' on M.B. 101-102 set by State
per ALABAMA-30



FM 21025
A11 OF A3



F.M.	21025
A2	OF A3



SANTA ANA FREEWAY TO THIRD STREET
 L.A. - 60 P.M. 06 TO P.M. 26
 Construction Contract No. 033114
 Completed 1/8/66

SURVEY NOTES-REFERENCES:
 State Division of Highways Field Notes:
 A215-73/78, A225-00-17/18, 47/54, A220.002-223/230, ALA060A-2, 8/50.
 Los Angeles County Field Notes:
 B 222-10/103, FB 304-14/32/73, FB 375-3, FQ 766-1, FB 772-26, FA 158-10.
 Los Angeles City Field Notes:
 10673-14, 18509-11/13, 23/29, 18509-44/46, 19604-8, 19609-2/15, 21603-54.
TRACT MAPS:
 MR 9-45, 15-99/100, 17-28, 19-41/42, 55-42, 83-83/84,
 104-21/8-9, 6-156, 6-167, 7-89, 8-26, 9-189, 10-52, 10-154/155, 12-160, 13-73, 13-125,
 13-152, 14-124, 14-163, 20-29, 21-183, 22-52, 22-28, 23-78/79, 27-40, 43-12, 43-14,
 47-46, 57-50, 119-29, 180-37/38.
DIVISION OF HIGHWAYS COORDINATE CONTROL MAPS:
 2141, 215.7, 2207
RIGHT OF WAY MAPS:
 F1777, F1778, F1779.
 1. Bearings are taken from C.C.M.'s listed above and are based on the California Coordinate System Zone VII, Sec 8809 of the Public Resources Code
 2. Division of Highways survey information is available from the Engineering Services Department located at 550 South Vermont Ave., Los Angeles, California 90005.
 3. Division of Highways Right-of-Way information is available from the Right-of-Way Department located at 120 South Spring Street, Los Angeles, California 90002.
 4. All distances shown hereon are measured distances.

SEE MONUMENTATION MAP MF 4016-1

F.M. | 21 | 02 | 51
 A3 | OF | A3

Chief of Party	DATE
C. GOON	1/7/66
T.S. Designer	M. LARKIN
E. STAHL	1/7/66
Map Supervisor	L. WAHLWEBER
P. NASVIK	1/7/66
Project Engineer	H. THOMAS
H. THOMAS	1/7/66
District Survey Engineer	W. SORLIE
District Survey Engineer	W. SORLIE
Approved Recommended By - Assistant District Engineer	K. E. Mc KEAN
K. E. Mc KEAN	1/7/66