

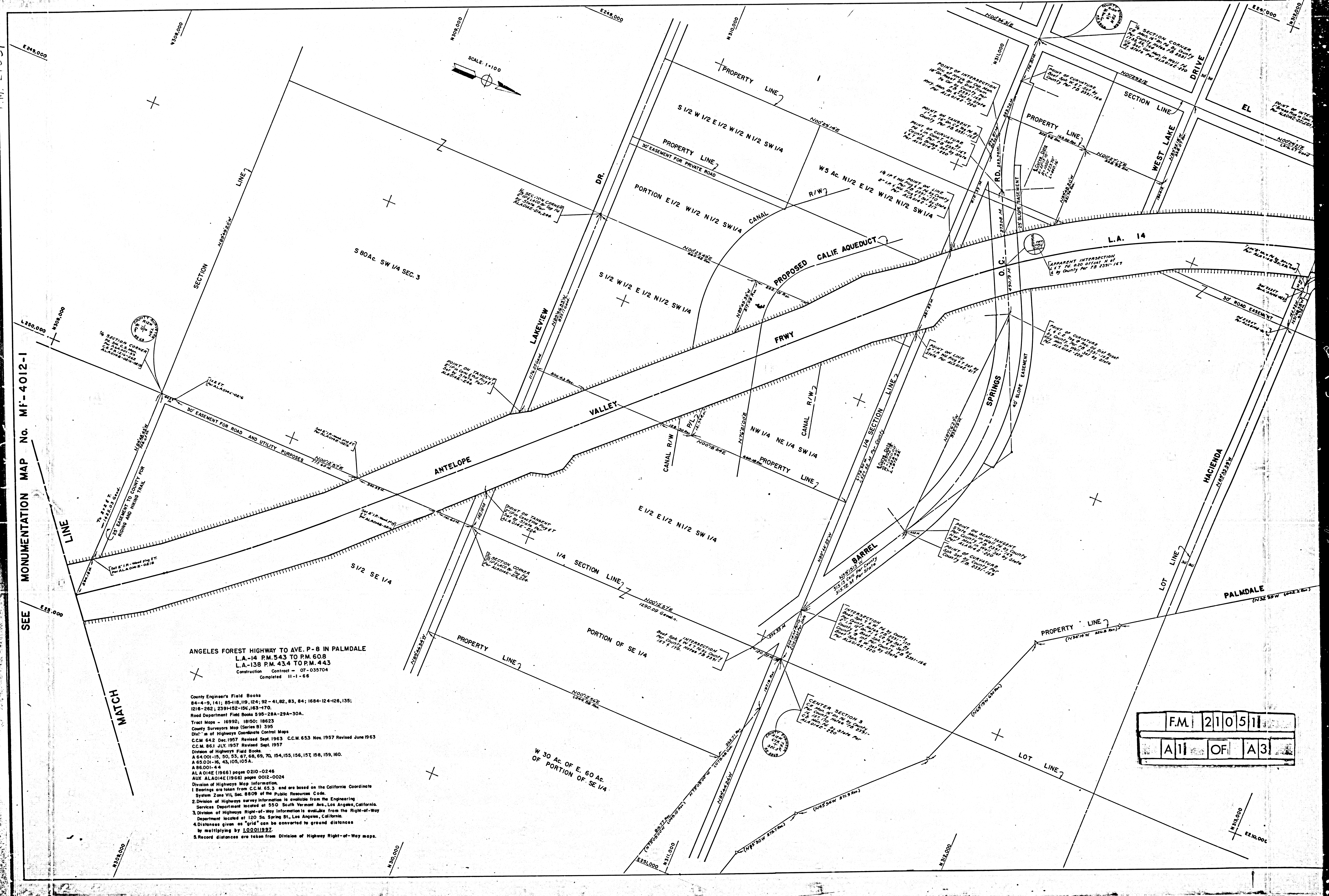
SEE MONUMENTATION MAP No. MF-4012-1

SEE

ANGELES FOREST HIGHWAY TO AVE. P-8 IN PALMDALE
 L.A.-14 P.M. 543 TO P.M. 608
 L.A.-138 P.M. 434 TO P.M. 443
 Contract - 07-035704
 Completed 11-1-66

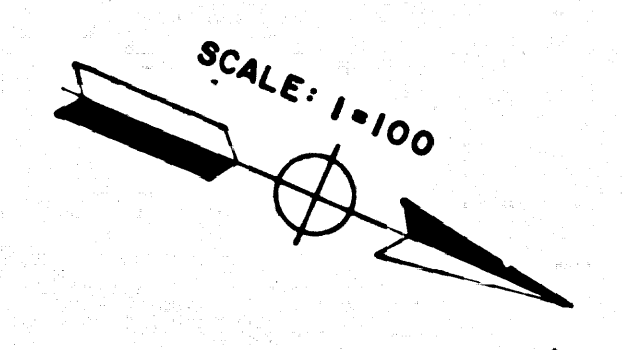
County Engineer's Field Books
 84-4-3, 141; 85-118, 119, 124, 92-41, 82, 83, 84; 1684-124-126, 135;
 1216-262; 2391-152-156, 163-170.
 Road Department Field Books 595-28A-29A-30A.
 Tract Maps - 16992; 18150; 18623
 County Surveyors Map (Series B) 395
 Division of Highways Coordinate Control Maps
 C.C.M. 642 Dec. 1957 Revised Sept. 1963 C.C.M. 653 Nov. 1957 Revised June 1963
 C.C.M. 661 JULY 1957 Revised Sept. 1957
 Division of Highways Field Books
 A 64,001-15, 50, 55, 67, 68, 69, 70, 154, 155, 156, 157, 158, 159, 160.
 A 85,001-16, 43, 105, 105A.
 A 85,001-44
 ALA 014E (1966) pages 0210-0246
 AUX ALA 014E (1966) pages 0012-0024
 Division of Highways Map Information
 1. Bearings are taken from C.C.M. 653 and are based on the California Coordinate System Zone VII, Sec. 8809 of the Public Resources Code.
 2. Division of Highways survey information is available from the Engineering Services Department located at 550 South Vermont Ave., Los Angeles, California.
 3. Division of Highways Right-of-Way information is available from the Right-of-Way Department located at 120 So. Spring St., Los Angeles, California.
 4. Distances given as "grid" can be converted to ground distances by multiplying by 1.0001297.
 5. Record distances are taken from Division of Highway Right-of-Way maps.

F.M. 21051
 A 11 OF A 3





STATE OF CALIFORNIA
 TRANSPORTATION AGENCY
 DEPARTMENT OF PUBLIC WORKS
 DIVISION OF HIGHWAYS
 MONUMENTATION MAP
 No. MF-4012-2
 A.C. Birnie Deputy District Engineer Date



SEE MONUMENTATION MAP No. MF-4012-3

F.M. | 21051 |
 A3 | OF | A3 |

Chief Of Party	DATE
A. L. SLATE	
Deleter	
E. LEE	1/60
Map Supervisor	
P. NABVIK	1/60
Project Engineer	
H. THOMAS	1/60
District Survey Engineer	
W. BOULIE	1/60
Approved Recommended by	
Assistant District Engineer	
E. E. MCKEAN	7/60