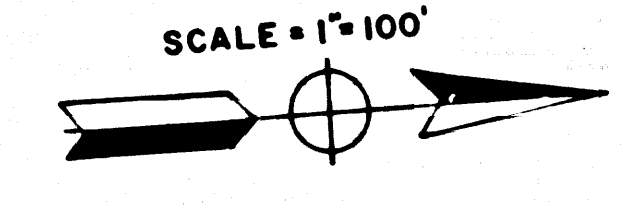


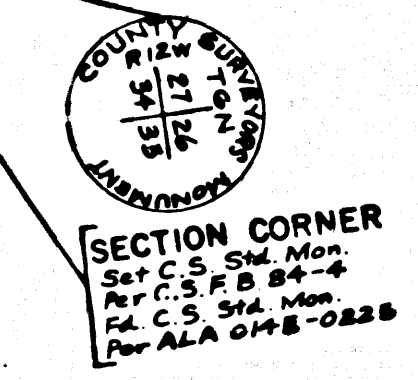
SEE MONUMENTATION MAP No. MF-4012-2



F.M. 121052
A1 OF A3

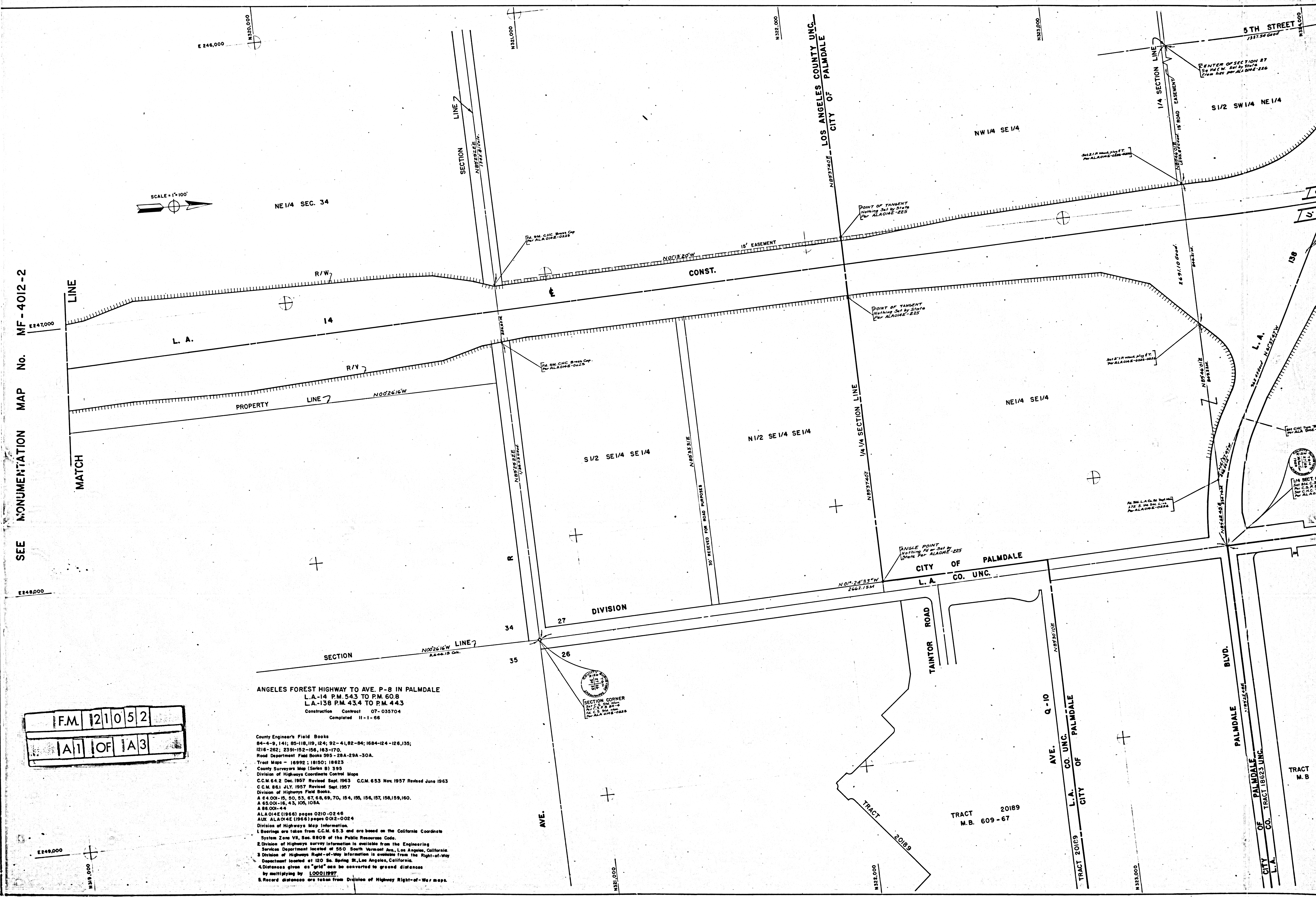
ANGELES FOREST HIGHWAY TO AVE. P-8 IN PALMDALE
L.A. 14 P.M. 54.3 TO P.M. 60.8
L.A. 138 P.M. 43.4 TO P.M. 44.3
Construction Contract 07-035704
Completed 11-1-66

County Engineer's Field Books
84-4-9, 141; 85-118, 119, 124; 92-41, 82-84; 1684-124-126, 135;
1216-262; 2391-152-156, 163-170.
Road Department Field Books 595-28A-29A-30A.
Tract Maps - 18992; 18150; 18623
County Surveyors Map (Series B) 335
Division of Highways Coordinate Control Maps
C.C.M. 64.2 Dec. 1957 Revised Sept. 1963 C.C.M. 65.3 Nov. 1957 Revised June 1963
C.C.M. 86.1 JULY 1957 Revised Sept. 1957
Division of Highways Field Books
A 64.001-15, 50, 53, 67, 68, 69, 70, 154, 155, 156, 157, 158, 159, 160.
A 65.001-16, 43, 100, 105A.
A 86.001-44
ALA 014E (1966) pages 0210-0246
AUX ALA 014E (1966) pages 0012-0024
Division of Highways Map Information.
1. Bearings are taken from C.C.M. 65.3 and are based on the California Coordinate System Zone VII, Sec. 8809 of the Public Resources Code.
2. Division of Highways survey information is available from the Engineering Services Department located at 550 South Vermont Ave., Los Angeles, California.
3. Division of Highways Right-of-Way information is available from the Right-of-Way Department located at 120 So. Spring St., Los Angeles, California.
4. Distances given as "grid" are to be converted to ground distances by multiplying by 1.0001227.
5. Record distances are taken from Division of Highway Right-of-Way maps.



TRACT 186
M.B. 454

TRACT 20189
M.B. 609-67





1/4 SECT. COR. - INTERS.
 SET BY C. S. HARRIS
 IN 1892
 M.B. 18623-37

SECT. COR. - INTERS.
 SET BY C. S. HARRIS
 IN 1892
 M.B. 18623-37

E 1/2 SW 1/4 SE 1/4

N 327,000

CONST.

E 247,000

NO.	DATE	BY	REVISION
07	L.A.	138	248-249

STATE OF CALIFORNIA
TRANSPORTATION AGENCY
DEPARTMENT OF PUBLIC WORKS
DIVISION OF HIGHWAYS
MONUMENTATION MAP
No. MF-4012-3
A. C. Birnie
C.E. 7913 Deputy District Engineer Date

PROPERTY LINE 7 W 1/4 SE 1/4 SE 1/4 N 00°32'22"W

PROPERTY LINE 7

PROPERTY LINE 7

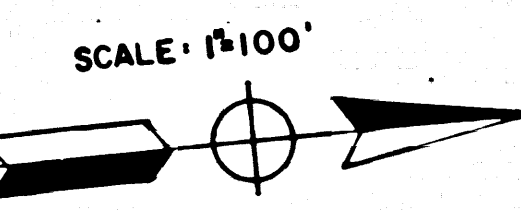
1/4 SECTION LINE

SLOPE EASEMENT

N 89°50'19"W

75 9 7 8' 0" 0.000'

SLOPE EASEMENT



E 248,000

ST. CITY OF PALMDALE
L. A. CO.

ST. N 00°31'41"W

2,449.56 CH.

SECTION LINE

DIVISION

N 00°31'41"W

1/4 SECT COR-INTERS.
Set C.M.C. Type 'B' Mon.
Per ALA 0142-0229

22

23

3rd. N 00°30'50"W

ST. EAST

E 249,000

P-8

265 9.33 0.000'

INTERSECTION
N 22°22' 41"
Per ALA 0142-0229
Per ALA 0142-0229
Per ALA 0142-0229

AVE.

N 88°52'32"E

1,886.21'

41°41'35" 0.000'

TRACT 14487
M.B. 525-14-15

AVE. P-12

TRACT 14487

TRACT 19803

TRACT 16992

TRACT 14487

TRACT 14487

Set C.M.C. Type 'B' Mon.
Per ALA 0142-0229

Set C.M.C. Type 'B' Mon.
Per ALA 0142-0229

Set C.M.C. Type 'B' Mon.
Per ALA 0142-0229

INTERSECTION
Set C.M.C. Type 'B' Mon.
Per ALA 0142-0229

SIERRA HWY.

N 02°30'37"W

59237 M.

Set C.M.C. Type 'B' Mon.
Per ALA 0142-0229

CURV DATA
R=1000.00
L=100.00
E=100.00

FM 21052
A3 OF A3

Chief Of Party	A. L. SLATE	DATE
Designer	K. LEE	1/68
Map Supervisor	P. NASYK	1/68
Project Engineer	H. THOMAS	1/68
District Survey Engineer	W. SORLIE	1/68
Approved Recommended By	K. E. McKEAN	7/68

F. M. 21052