

SEE MONUMENTATION MAP MF 4027-2

MATCH LINE SECTION LINE

WITNESS CORNERS
 1/4 Sec 311 from 2-267 Sec Cor
 of Cap Man 311 from 2-267 Sec Cor
 by State Per ALA005N-256
 2- Cap Man in 8" IP in Conc. Slat
 by County Per County Per
 PB-652-56,00

1/4 SECTION CORNER
 LACo 2- Cap Man in Conc. 8" Dia Line
 Made on State 1-6 by State
 Per ALA005N-22323, 287
 LA Co 2- Cap Man in 2" IP in Conc
 Made at Sheron by LA County Notes
 PB 303-78 (PB 652-79)

ANGLE POINT
 Type A Man Set by State
 in Conc. Set by State
 Per ALA005N-287

NOTE: THIS SECTION OF FRONTAGE ROAD TO BE CONSTRUCTED BY OTHERS AT A LATER DATE

INTERSECTION
 1/4 Sec 311 from 2-267 Sec Cor
 by State Per ALA005N-229

POINT ON TANGENT
 1/4 Sec 311 from 2-267 Sec Cor
 in Conc. Per A 30-28

POINT ON TANGENT
 Type B Man Set by State
 Per ALA005N-251

INTERSECTION
 R/W LINE 1949
 by State Per ALA005N-259

POINT ON TANGENT
 1/4 Sec 311 from 2-267 Sec Cor
 in Conc. Per A 30-27

POINT OF CURVATURE
 1/4 Sec 311 from 2-267 Sec Cor
 in Conc. Per A 30-27

POINT ON TANGENT
 Type B Man Set by State
 Per ALA005N-259

INTERSECTION
 R/W LINE 1949
 by State Per ALA005N-259

INTERSECTION
 1/4 Sec 311 from 2-267 Sec Cor
 by State Per ALA005N-256

POINT ON TANGENT
 Type B Man Set by State
 Per ALA005N-259

POINT OF CURVATURE
 Type B Man Set by State
 Per ALA005N-259

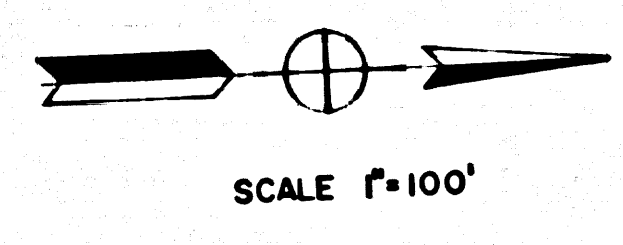
POINT OF CURVATURE
 Type B Man Set by State
 Per ALA005N-259

POINT OF CURVATURE
 Type B Man Set by State
 Per ALA005N-259

WITNESS CORNER
 LACo 2- Cap Man in Conc. 8" Dia Line
 Made on State 1-6 by State
 Per ALA005N-229
 2- Cap Man in 8" IP in Conc. Slat
 by County Per County Per
 PB 781-96 (PB 652-79)

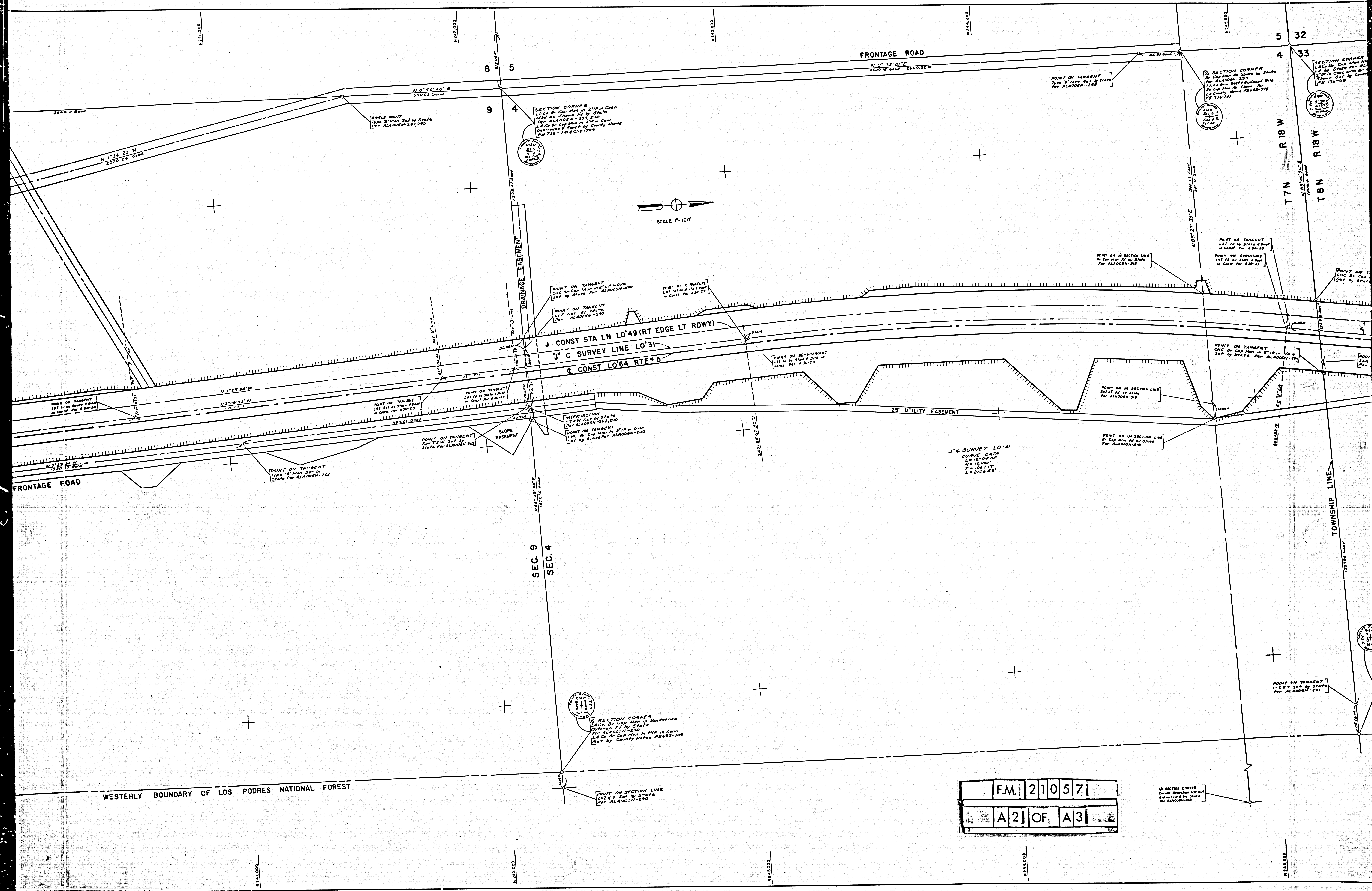
CENTER OF SECTION
 Not Monumented Per LACo
 CSB 1709

1/4 SECTION CORNER
 2-267 Sec 311 from 2-267 Sec Cor
 by State Per ALA005N-229
 Witness Corners Per ALA005N-229
 Nothing Set by County
 Per CSB-1709

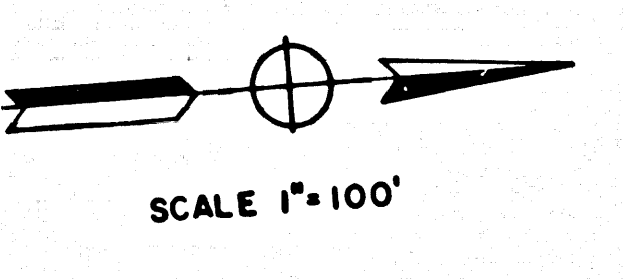


WESTERLY BOUNDARY OF LOS PODRES NATIONAL FOREST

F.M. 21057
 A 1 OF A 3



FRONTAGE ROAD
 N 0° 32' 01" E
 1200.18' Cont'd 2660.52' M



SECTION CORNER
 LA Co. Br. Cap. Mon. in 2" IP in Conc.
 LAC. Br. Cap. Mon. Set by State
 Per ALA005N-233,230
 Destroyed & Reset by County Notice
 FB 736-1416 CED 1708

SEC. 9
 SEC. 4

WESTERLY BOUNDARY OF LOS PODRES NATIONAL FOREST

F.M. 210571
 A 21 OF A 3

POINT ON TANGENT
 CMC Br. Cap. Mon. in 2" IP in Conc.
 Set by State Per ALA005N-230

POINT OF CURVATURE
 L&T Set by State & Dist
 in Const. Per A-30-29

POINT ON TANGENT
 L&T Set by State
 Per ALA005N-230

J CONST STA LN L0'49 (RT EDGE LT RDWY)

U¹ C SURVEY LINE L0'31

C CONST L0'64 RTE #5

POINT ON SEMI-TANGENT
 L&T Set by State & Dist
 in Const. Per A-30-29

25' UTILITY EASEMENT

U¹ & SURVEY L0'31
 CURVE DATA
 Δ = 15° 00' 10"
 R = 10.000'
 T = 1027.17'
 L = 2106.52'

POINT ON 1/4 SECTION LINE
 Br. Cap. Mon. Set by State
 Per ALA005N-218

INTERSECTION
 ST. W. Set by State
 L&T ALA005N-242,230

POINT ON TANGENT
 CMC Br. Cap. Mon. in 2" IP in Conc.
 Set by State Per ALA005N-230

POINT ON TANGENT
 State Per ALA005N-242

POINT ON TANGENT
 Type "B" Mon. Set by
 State Per ALA005N-241

SECTION CORNER
 LA Co. Br. Cap. Mon. in 2" IP in Conc.
 LAC. Br. Cap. Mon. Set by State
 Per ALA005N-233
 Destroyed & Reset by County Notice
 FB 736-141

SECTION CORNER
 LA Co. Br. Cap. Mon. in 2" IP in Conc.
 LAC. Br. Cap. Mon. Set by State
 Per ALA005N-233
 Destroyed & Reset by County Notice
 FB 736-141

POINT ON TANGENT
 L&T Set by State & Dist
 in Const. Per A-30-23

POINT ON CURVATURE
 L&T Set by State & Dist
 in Const. Per A-30-23

POINT ON TANGENT
 CMC Br. Cap. Mon. Set by State

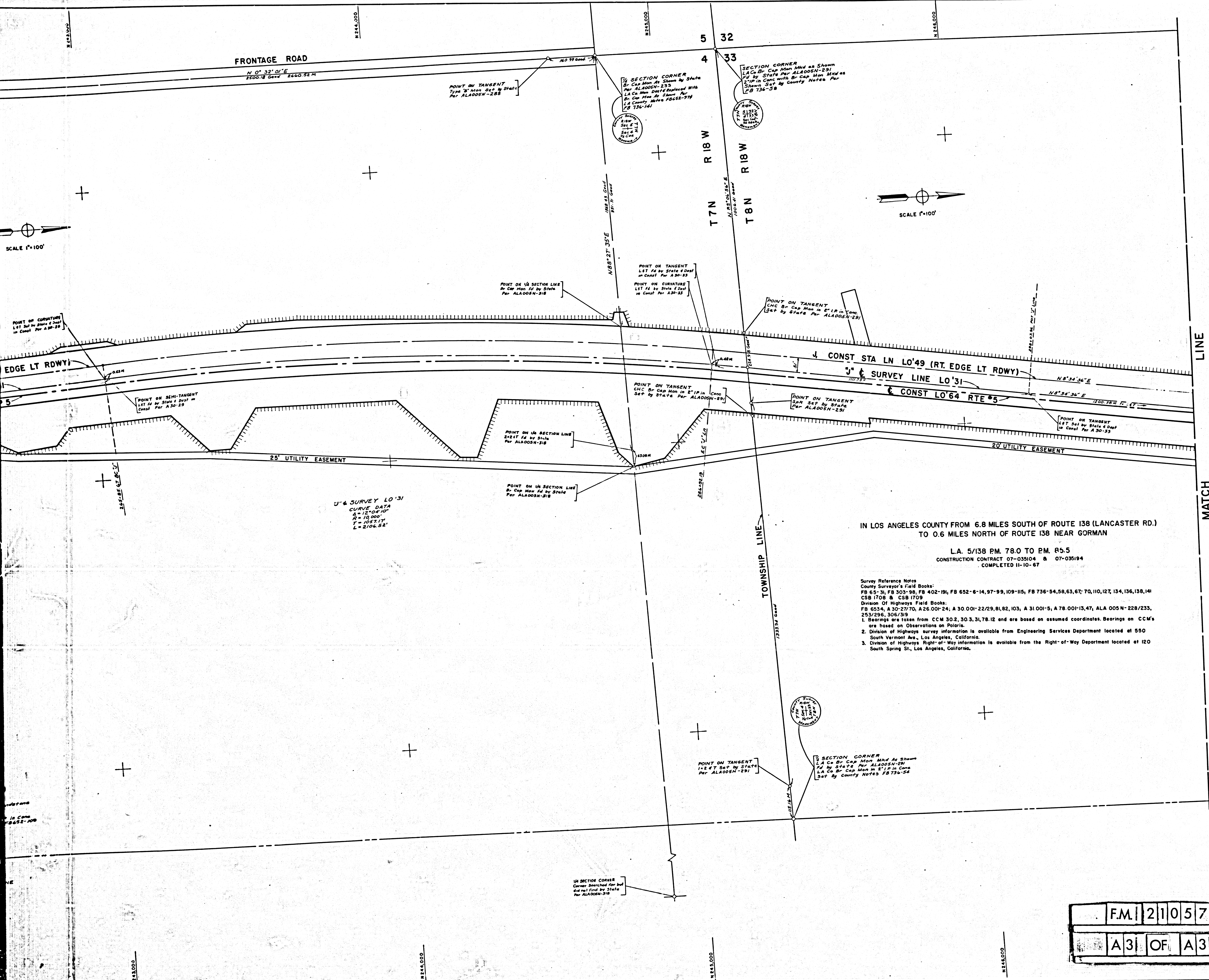
POINT ON TANGENT
 CMC Br. Cap. Mon. in 2" IP in Conc.
 Set by State Per ALA005N-230

POINT ON 1/4 SECTION LINE
 2x24" Set by State
 Per ALA005N-218

POINT ON TANGENT
 CMC Br. Cap. Mon. Set by State

POINT ON TANGENT
 L&T Set by State
 Per ALA005N-230

1/4 SECTION CORNER
 Corner searched for but
 did not find by State
 Per ALA005N-218

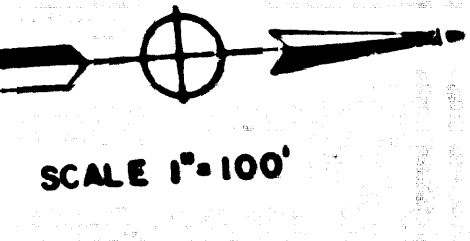
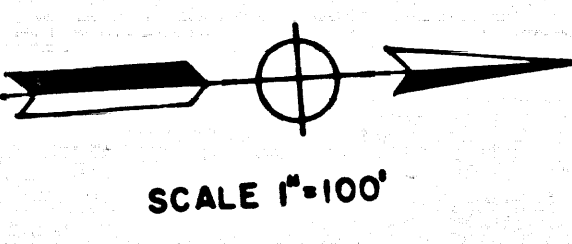


IN LOS ANGELES COUNTY FROM 6.8 MILES SOUTH OF ROUTE 138 (LANCASTER RD.) TO 0.6 MILES NORTH OF ROUTE 138 NEAR GORMAN

L.A. 5/138 P.M. 78.0 TO P.M. 85.5
CONSTRUCTION CONTRACT 07-035104 & 07-035194
COMPLETED 11-10-67

Survey Reference Notes
County Surveyor's Field Books:
FB 63-31, FB 303-98, FB 402-191, FB 652-6-14, 97-99, 109-115, FB 736-54, 58, 63, 67; 70, 110, 127, 134, 136, 138, 141
CSB 1708 & CSB 1709
Division of Highways Field Books:
FB 633A, A 30-27, 70, A 26-00-24, A 30-00-22, 29, 81, 82, 103, A 31-00-15, A 78-00-13, 47, ALA 005 N-228/233, 253/296, 306/319
1. Bearings are taken from CCM 30.2, 30.3, 31, 78.12 and are based on assumed coordinates. Bearings on CCM's are based on Observations on Polaris.
2. Division of Highways survey information is available from Engineering Services Department located at 550 South Vermont Ave., Los Angeles, California.
3. Division of Highways Right-of-Way information is available from the Right-of-Way Department located at 120 South Spring St., Los Angeles, California.

U' & SURVEY LO'31
CURVE DATA
A = 127°04'10"
R = 10,000'
T = 1057.17'
L = 2106.55'



SEE MONUMENTATION MAP MF 4028-2

F.M. | 21057 |
A3 | OF | A3 |

Chief of Party	DATE
E. NAVE	
Dr. Designer	DATE
E.E. STAHL	D. ROSMINI
9/67	
Map Supervisor	DATE
P. NASVIK	L. WAHLWEBER
9/67	
Project Engineer	DATE
H. THOMAS	
9/67	
District Survey Engineer	DATE
W. SOLLIE	
9/67	
Approval Recommended By	DATE
Assistant District Engineer	
K. MCKEAN	8/68