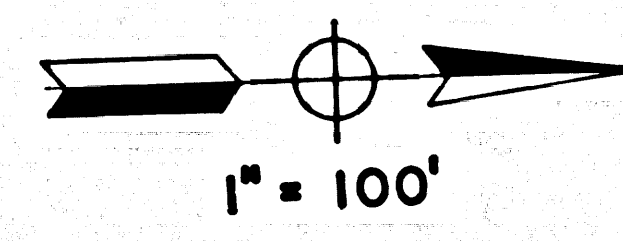
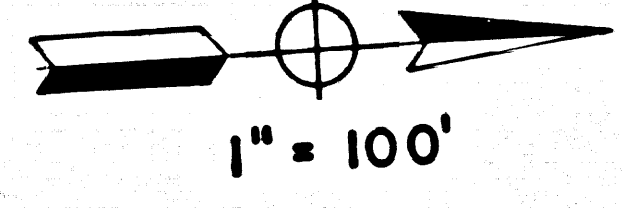
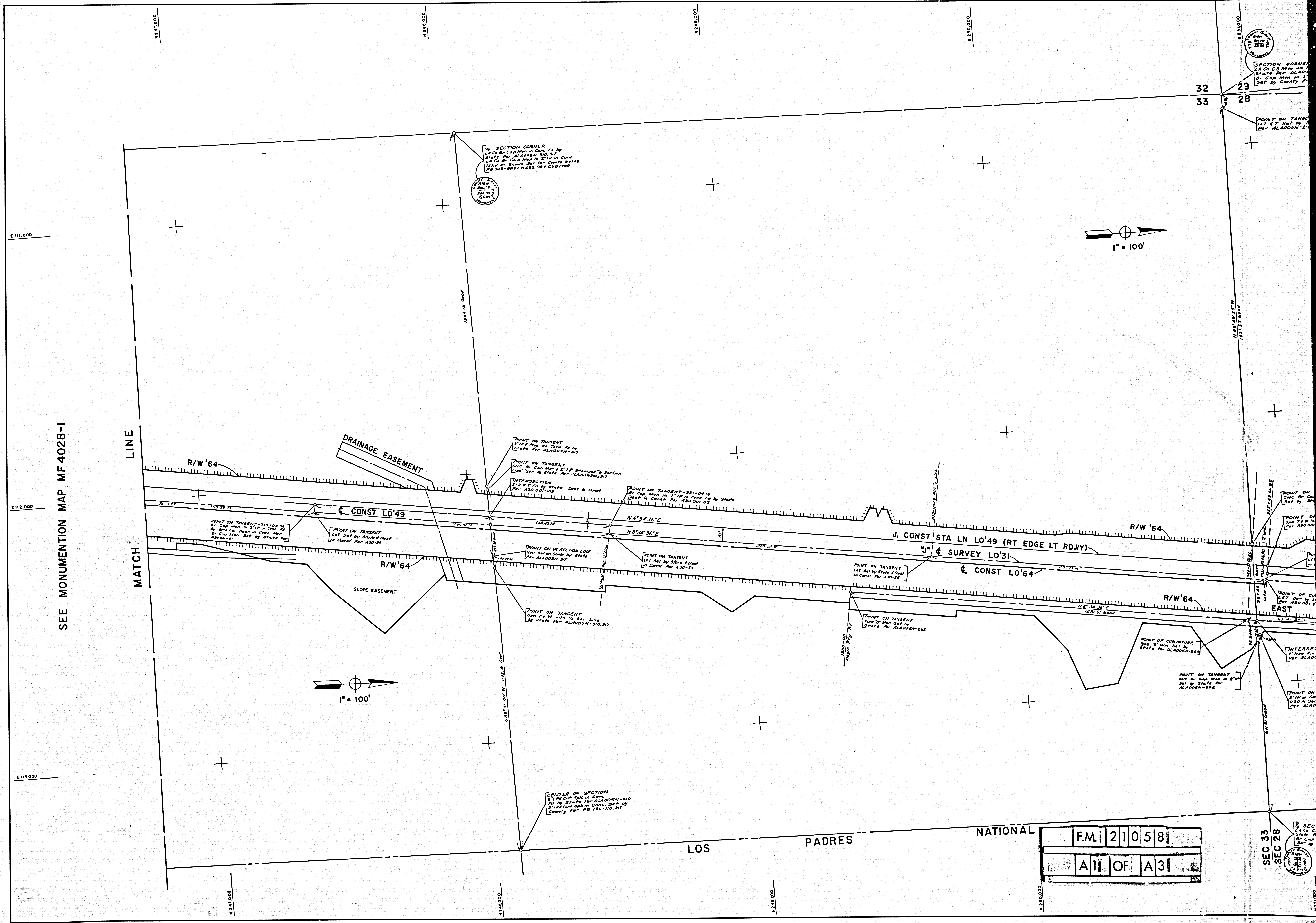


SEE MONUMENTATION MAP MF 4028-1



F.M.	21058
A11 OF A31	

SEC 33  
SEC 28

SECTION CORNER  
1/4 Sec 28  
1/4 Sec 29  
1/4 Sec 32  
1/4 Sec 33  
Set by State  
Per ALA005N-28

POINT ON TANGENT  
1/2 4" Iron Pin  
Set by State  
Per ALA005N-28

POINT ON TANGENT  
1/2 4" Iron Pin  
Set by State  
Per ALA005N-28

POINT ON TANGENT  
1/2 4" Iron Pin  
Set by State  
Per ALA005N-28

POINT OF CURVATURE  
Type "B" Mon. Set by  
State Per ALA005N-263

POINT ON TANGENT  
Type "B" Mon. Set by  
State Per ALA005N-262

POINT ON TANGENT  
1/2 4" Iron Pin  
Set by State  
Per ALA005N-282

INTERSECTION  
2" Iron Pin  
Set by State  
Per ALA005N-282

POINT ON TANGENT  
1/2 4" Iron Pin  
Set by State  
Per ALA005N-282

POINT ON TANGENT  
1/2 4" Iron Pin  
Set by State  
Per ALA005N-282

POINT ON TANGENT  
1/2 4" Iron Pin  
Set by State  
Per ALA005N-282

POINT ON TANGENT  
1/2 4" Iron Pin  
Set by State  
Per ALA005N-282

POINT ON TANGENT  
1/2 4" Iron Pin  
Set by State  
Per ALA005N-282

POINT ON TANGENT  
1/2 4" Iron Pin  
Set by State  
Per ALA005N-282

POINT ON TANGENT  
1/2 4" Iron Pin  
Set by State  
Per ALA005N-282

POINT ON TANGENT  
1/2 4" Iron Pin  
Set by State  
Per ALA005N-282

1/4 SECTION CORNER  
1/4 Sec 28  
1/4 Sec 29  
1/4 Sec 32  
1/4 Sec 33  
Set by State  
Per ALA005N-310

POINT ON TANGENT  
1/2 4" Iron Pin  
Set by State  
Per ALA005N-310

POINT ON TANGENT  
1/2 4" Iron Pin  
Set by State  
Per ALA005N-310

INTERSECTION  
2" x 4" T. Pin Set by State  
Per ALA005N-310

POINT ON TANGENT  
1/2 4" Iron Pin  
Set by State  
Per ALA005N-310

POINT ON TANGENT  
1/2 4" Iron Pin  
Set by State  
Per ALA005N-310

POINT ON TANGENT  
1/2 4" Iron Pin  
Set by State  
Per ALA005N-310

POINT ON TANGENT  
1/2 4" Iron Pin  
Set by State  
Per ALA005N-310

POINT ON TANGENT  
1/2 4" Iron Pin  
Set by State  
Per ALA005N-310

POINT ON TANGENT  
1/2 4" Iron Pin  
Set by State  
Per ALA005N-310

POINT ON TANGENT  
1/2 4" Iron Pin  
Set by State  
Per ALA005N-310

POINT ON TANGENT  
1/2 4" Iron Pin  
Set by State  
Per ALA005N-310

POINT ON TANGENT  
1/2 4" Iron Pin  
Set by State  
Per ALA005N-310

POINT ON TANGENT  
1/2 4" Iron Pin  
Set by State  
Per ALA005N-310

POINT ON TANGENT  
1/2 4" Iron Pin  
Set by State  
Per ALA005N-310

POINT ON TANGENT  
1/2 4" Iron Pin  
Set by State  
Per ALA005N-310

POINT ON TANGENT  
1/2 4" Iron Pin  
Set by State  
Per ALA005N-310

POINT ON TANGENT  
1/2 4" Iron Pin  
Set by State  
Per ALA005N-310

POINT ON TANGENT  
1/2 4" Iron Pin  
Set by State  
Per ALA005N-310

POINT ON TANGENT  
1/2 4" Iron Pin  
Set by State  
Per ALA005N-310

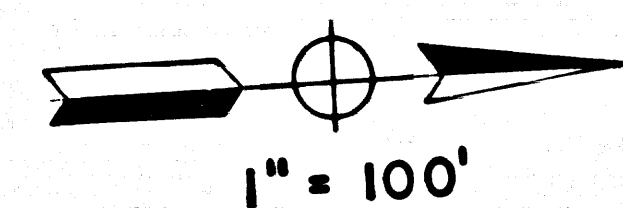
POINT ON TANGENT  
1/2 4" Iron Pin  
Set by State  
Per ALA005N-310

POINT ON TANGENT  
1/2 4" Iron Pin  
Set by State  
Per ALA005N-310

POINT ON TANGENT  
1/2 4" Iron Pin  
Set by State  
Per ALA005N-310

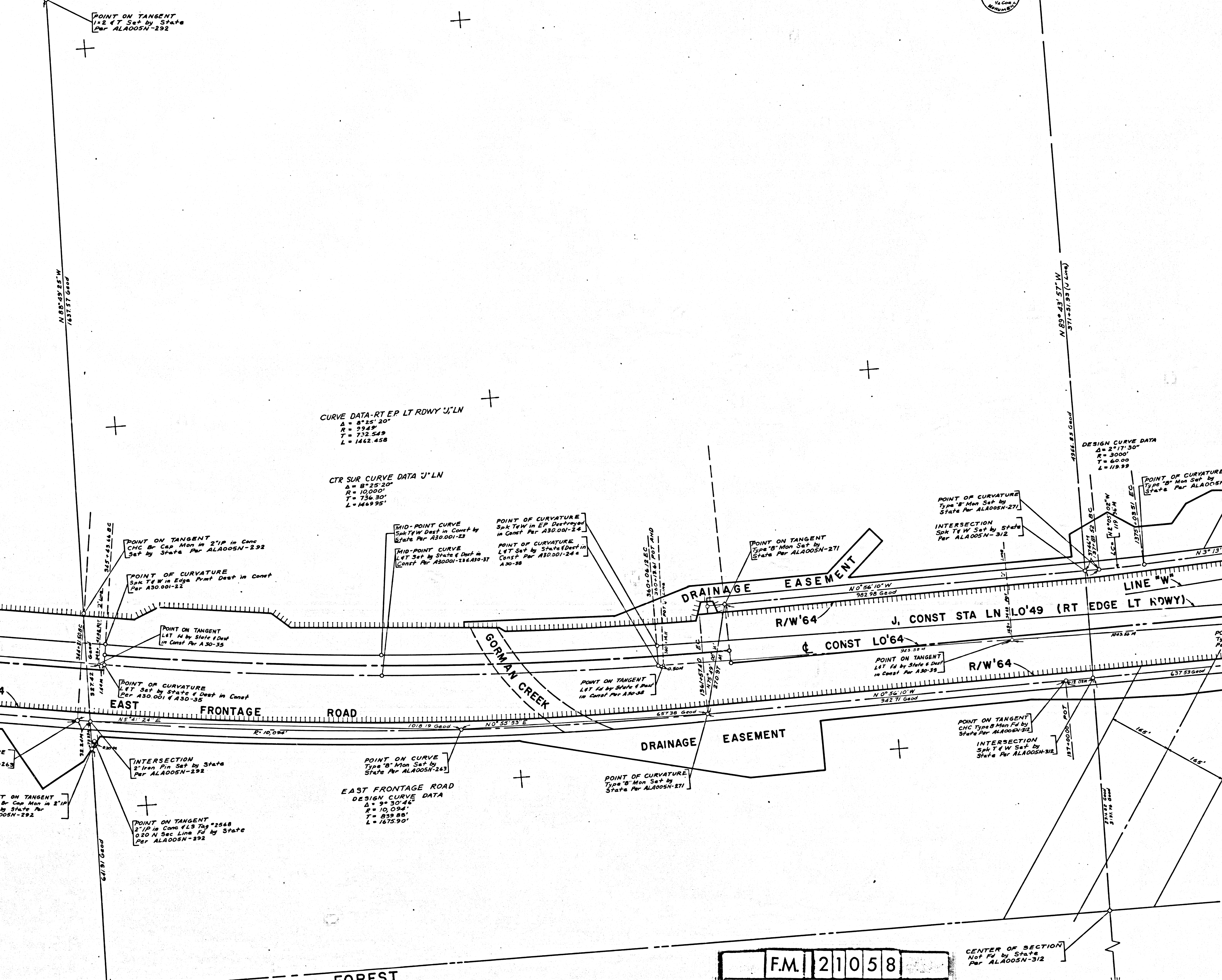
CENTER OF SECTION  
2" x 4" T. Pin Set by State  
Per ALA005N-310





SEC 29  
SEC 28

SECTION CORNER  
1/4 Sec 29, 1/4 Sec 28  
1/4 Sec 32, 1/4 Sec 33  
1/4 Sec 29, 1/4 Sec 28  
1/4 Sec 32, 1/4 Sec 33  
1/4 Sec 29, 1/4 Sec 28  
1/4 Sec 32, 1/4 Sec 33



CURVE DATA-RT EP LT RDWY 'J' LN  
 $\Delta = 87^{\circ}25'30''$   
 $R = 224.8'$   
 $T = 732.545'$   
 $L = 1422.458'$

CTR SUR CURVE DATA 'J' LN  
 $R = 10000'$   
 $T = 736.30'$   
 $L = 1449.95'$

DESIGN CURVE DATA  
 $\Delta = 2^{\circ}17'30''$   
 $R = 3000'$   
 $T = 40.00'$   
 $L = 119.99'$

EAST FRONTAGE ROAD  
 DESIGN CURVE DATA  
 $\Delta = 30^{\circ}24'$   
 $R = 10.094'$   
 $T = 839.88'$   
 $L = 1675.90'$

IN LOS ANGELES COUNTY FROM 6.8 MILES SOUTH OF ROUTE 138 NEAR  
 TO 0.6 MILES NORTH OF ROUTE 138 NEAR  
 L.A. 4/138 P.M. 780 TO P.M. 85.5  
 CONSTRUCTION CONTRACT 07-035104 & 07-035105  
 COMPLETED 11-10-67

F.M. 21058  
 A 2 OF A 3

Survey Reference Notes  
 County Surveyor's Field Books:  
 FB 65-31, FB 303-90, FB 402-91, FB 652-8-14, 97-98, 179-115, FB 736-54, 58, 61, 62, 63, 64, 65, 66, 67, 68, 69, 70, 71, 72, 73, 74, 75, 76, 77, 78, 79, 80, 81, 82, 83, 84, 85, 86, 87, 88, 89, 90, 91, 92, 93, 94, 95, 96, 97, 98, 99, 100, 101, 102, 103, 104, 105, 106, 107, 108, 109, 110, 111, 112, 113, 114, 115, 116, 117, 118, 119, 120, 121, 122, 123, 124, 125, 126, 127, 128, 129, 130, 131, 132, 133, 134, 135, 136, 137, 138, 139, 140, 141, 142, 143, 144, 145, 146, 147, 148, 149, 150, 151, 152, 153, 154, 155, 156, 157, 158, 159, 160, 161, 162, 163, 164, 165, 166, 167, 168, 169, 170, 171, 172, 173, 174, 175, 176, 177, 178, 179, 180, 181, 182, 183, 184, 185, 186, 187, 188, 189, 190, 191, 192, 193, 194, 195, 196, 197, 198, 199, 200, 201, 202, 203, 204, 205, 206, 207, 208, 209, 210, 211, 212, 213, 214, 215, 216, 217, 218, 219, 220, 221, 222, 223, 224, 225, 226, 227, 228, 229, 230, 231, 232, 233, 234, 235, 236, 237, 238, 239, 240, 241, 242, 243, 244, 245, 246, 247, 248, 249, 250, 251, 252, 253, 254, 255, 256, 257, 258, 259, 260, 261, 262, 263, 264, 265, 266, 267, 268, 269, 270, 271, 272, 273, 274, 275, 276, 277, 278, 279, 280, 281, 282, 283, 284, 285, 286, 287, 288, 289, 290, 291, 292, 293, 294, 295, 296, 297, 298, 299, 300, 301, 302, 303, 304, 305, 306, 307, 308, 309, 310, 311, 312, 313, 314, 315, 316, 317, 318, 319, 320, 321, 322, 323, 324, 325, 326, 327, 328, 329, 330, 331, 332, 333, 334, 335, 336, 337, 338, 339, 340, 341, 342, 343, 344, 345, 346, 347, 348, 349, 350, 351, 352, 353, 354, 355, 356, 357, 358, 359, 360, 361, 362, 363, 364, 365, 366, 367, 368, 369, 370, 371, 372, 373, 374, 375, 376, 377, 378, 379, 380, 381, 382, 383, 384, 385, 386, 387, 388, 389, 390, 391, 392, 393, 394, 395, 396, 397, 398, 399, 400, 401, 402, 403, 404, 405, 406, 407, 408, 409, 410, 411, 412, 413, 414, 415, 416, 417, 418, 419, 420, 421, 422, 423, 424, 425, 426, 427, 428, 429, 430, 431, 432, 433, 434, 435, 436, 437, 438, 439, 440, 441, 442, 443, 444, 445, 446, 447, 448, 449, 450, 451, 452, 453, 454, 455, 456, 457, 458, 459, 460, 461, 462, 463, 464, 465, 466, 467, 468, 469, 470, 471, 472, 473, 474, 475, 476, 477, 478, 479, 480, 481, 482, 483, 484, 485, 486, 487, 488, 489, 490, 491, 492, 493, 494, 495, 496, 497, 498, 499, 500, 501, 502, 503, 504, 505, 506, 507, 508, 509, 510, 511, 512, 513, 514, 515, 516, 517, 518, 519, 520, 521, 522, 523, 524, 525, 526, 527, 528, 529, 530, 531, 532, 533, 534, 535, 536, 537, 538, 539, 540, 541, 542, 543, 544, 545, 546, 547, 548, 549, 550, 551, 552, 553, 554, 555, 556, 557, 558, 559, 560, 561, 562, 563, 564, 565, 566, 567, 568, 569, 570, 571, 572, 573, 574, 575, 576, 577, 578, 579, 580, 581, 582, 583, 584, 585, 586, 587, 588, 589, 590, 591, 592, 593, 594, 595, 596, 597, 598, 599, 600, 601, 602, 603, 604, 605, 606, 607, 608, 609, 610, 611, 612, 613, 614, 615, 616, 617, 618, 619, 620, 621, 622, 623, 624, 625, 626, 627, 628, 629, 630, 631, 632, 633, 634, 635, 636, 637, 638, 639, 640, 641, 642, 643, 644, 645, 646, 647, 648, 649, 650, 651, 652, 653, 654, 655, 656, 657, 658, 659, 660, 661, 662, 663, 664, 665, 666, 667, 668, 669, 670, 671, 672, 673, 674, 675, 676, 677, 678, 679, 680, 681, 682, 683, 684, 685, 686, 687, 688, 689, 690, 691, 692, 693, 694, 695, 696, 697, 698, 699, 700, 701, 702, 703, 704, 705, 706, 707, 708, 709, 710, 711, 712, 713, 714, 715, 716, 717, 718, 719, 720, 721, 722, 723, 724, 725, 726, 727, 728, 729, 730, 731, 732, 733, 734, 735, 736, 737, 738, 739, 740, 741, 742, 743, 744, 745, 746, 747, 748, 749, 750, 751, 752, 753, 754, 755, 756, 757, 758, 759, 760, 761, 762, 763, 764, 765, 766, 767, 768, 769, 770, 771, 772, 773, 774, 775, 776, 777, 778, 779, 780, 781, 782, 783, 784, 785, 786, 787, 788, 789, 790, 791, 792, 793, 794, 795, 796, 797, 798, 799, 800, 801, 802, 803, 804, 805, 806, 807, 808, 809, 810, 811, 812, 813, 814, 815, 816, 817, 818, 819, 820, 821, 822, 823, 824, 825, 826, 827, 828, 829, 830, 831, 832, 833, 834, 835, 836, 837, 838, 839, 840, 841, 842, 843, 844, 845, 846, 847, 848, 849, 850, 851, 852, 853, 854, 855, 856, 857, 858, 859, 860, 861, 862, 863, 864, 865, 866, 867, 868, 869, 870, 871, 872, 873, 874, 875, 876, 877, 878, 879, 880, 881, 882, 883, 884, 885, 886, 887, 888, 889, 890, 891, 892, 893, 894, 895, 896, 897, 898, 899, 900, 901, 902, 903, 904, 905, 906, 907, 908, 909, 910, 911, 912, 913, 914, 915, 916, 917, 918, 919, 920, 921, 922, 923, 924, 925, 926, 927, 928, 929, 930, 931, 932, 933, 934, 935, 936, 937, 938, 939, 940, 941, 942, 943, 944, 945, 946, 947, 948, 949, 950, 951, 952, 953, 954, 955, 956, 957, 958, 959, 960, 961, 962, 963, 964, 965, 966, 967, 968, 969, 970, 971, 972, 973, 974, 975, 976, 977, 978, 979, 980, 981, 982, 983, 984, 985, 986, 987, 988, 989, 990, 991, 992, 993, 994, 995, 996, 997, 998, 999, 1000.

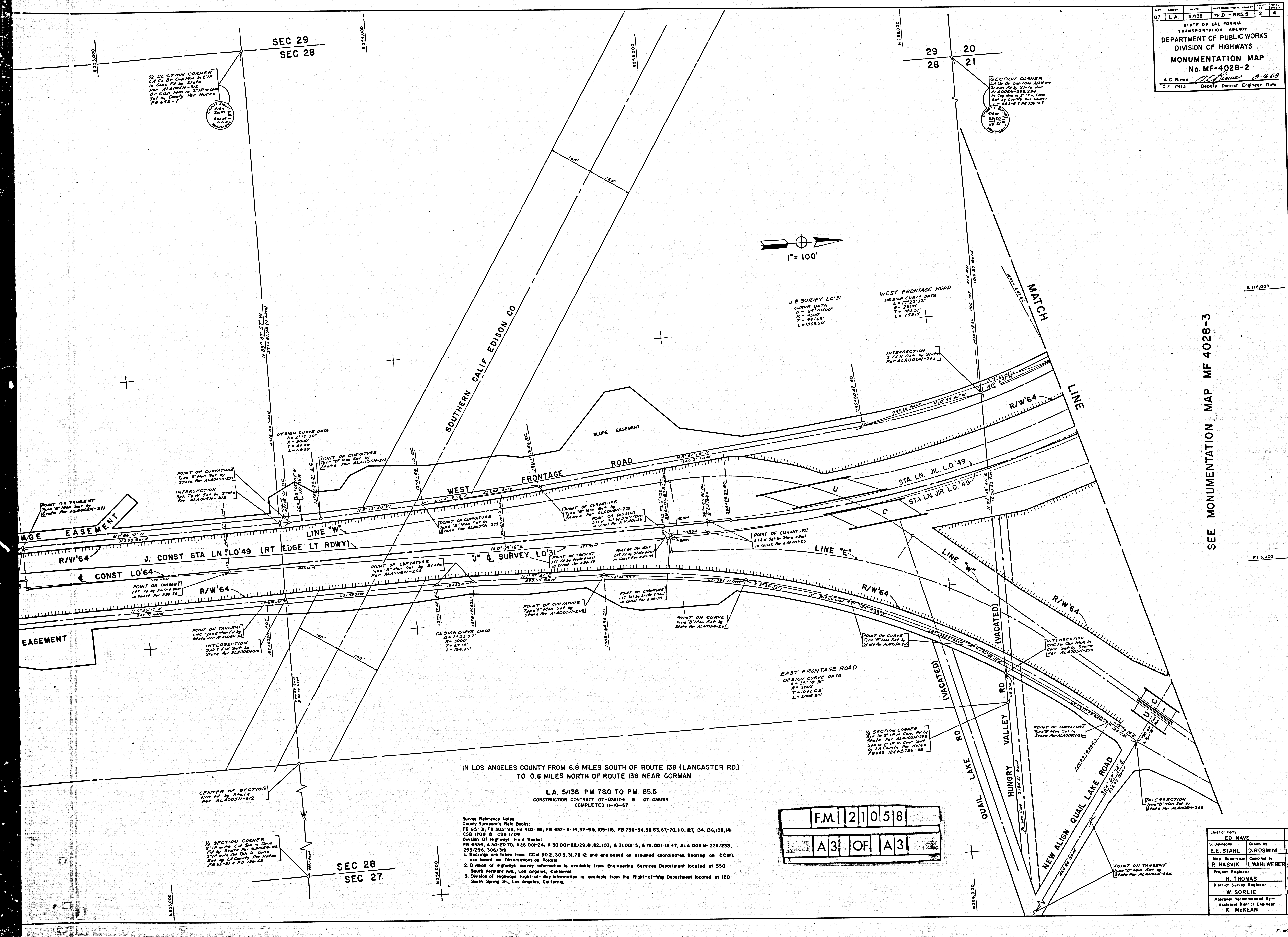
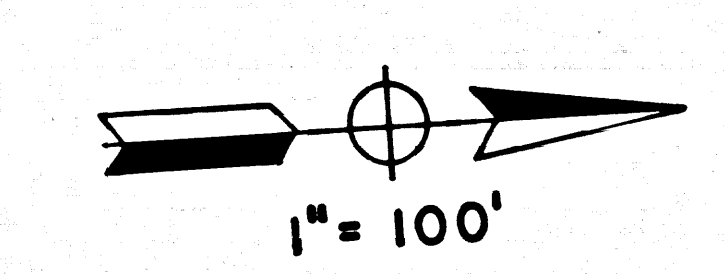


SEC 29  
SEC 28

29 20  
28 21

1/4 SECTION CORNER  
L.A. Co. B. Cap. Mon. Set in Conc. P. by State for ALA005N-312  
B. Cap. Mon. in 2" IP in Conc. Set by County Per Notes FB 652-7

SECTION CORNER  
L.A. Co. B. Cap. Mon. Set in Conc. P. by State for ALA005N-293, 294  
B. Cap. Mon. in 2" IP in Conc. Set by County Per Notes FB 652-6 & FB 756-47



J & SURVEY L0'31  
CURVE DATA  
A = 25°00'00"  
R = 4500'  
T = 9974.3'  
L = 1963.50'

WEST FRONTAGE ROAD  
DESIGN CURVE DATA  
A = 17°22'32"  
R = 2500'  
T = 392.0'  
L = 758.5'

EAST FRONTAGE ROAD  
DESIGN CURVE DATA  
A = 38°18'31"  
R = 3000'  
T = 1042.03'  
L = 2000.93'

IN LOS ANGELES COUNTY FROM 6.8 MILES SOUTH OF ROUTE 138 (LANCASTER RD.)  
TO 0.6 MILES NORTH OF ROUTE 138 NEAR GORMAN

L.A. 5/138 P.M. 78.0 TO P.M. 85.5  
CONSTRUCTION CONTRACT 07-035104 & 07-035194  
COMPLETED 11-10-67

- Survey Reference Notes  
County Surveyor's Field Books:  
FB 65-31, FB 303-98, FB 402-191, FB 652-6-14, 97-99, 109-115, FB 736-54, 58, 63, 67, 70, 110, 127, 134, 136, 138, 141  
CSB 1708 & CSB 1709  
Division of Highways Field Books:  
FB 6534, A 30-2770, A26.001-24, A 30.001-22/29, 81, 82, 103, A 31.001-5, A 78.001-13, 47, ALA 005N-228/233,  
283/294, 306/318  
1. Bearings are taken from CCM 30.2, 30.3, 31, 78.12 and are based on assumed coordinates. Bearing on CCM's  
are based on Observations on Potaris.  
2. Division of Highways survey information is available from Engineering Services Department located at 550  
South Vermont Ave., Los Angeles, California.  
3. Division of Highways Right-of-Way information is available from the Right-of-Way Department located at 120  
South Spring St., Los Angeles, California.

F.M. 21058  
A3 OF A3

SEE MONUMENTATION MAP MF 4028-3

ED NAME	DATE
ED NAME	
D. ROSMINI	10/67
L. WAHLWEBER	10/67
H. THOMAS	10/67
W. SORLIE	10/67
K. MCKEAN	8/68