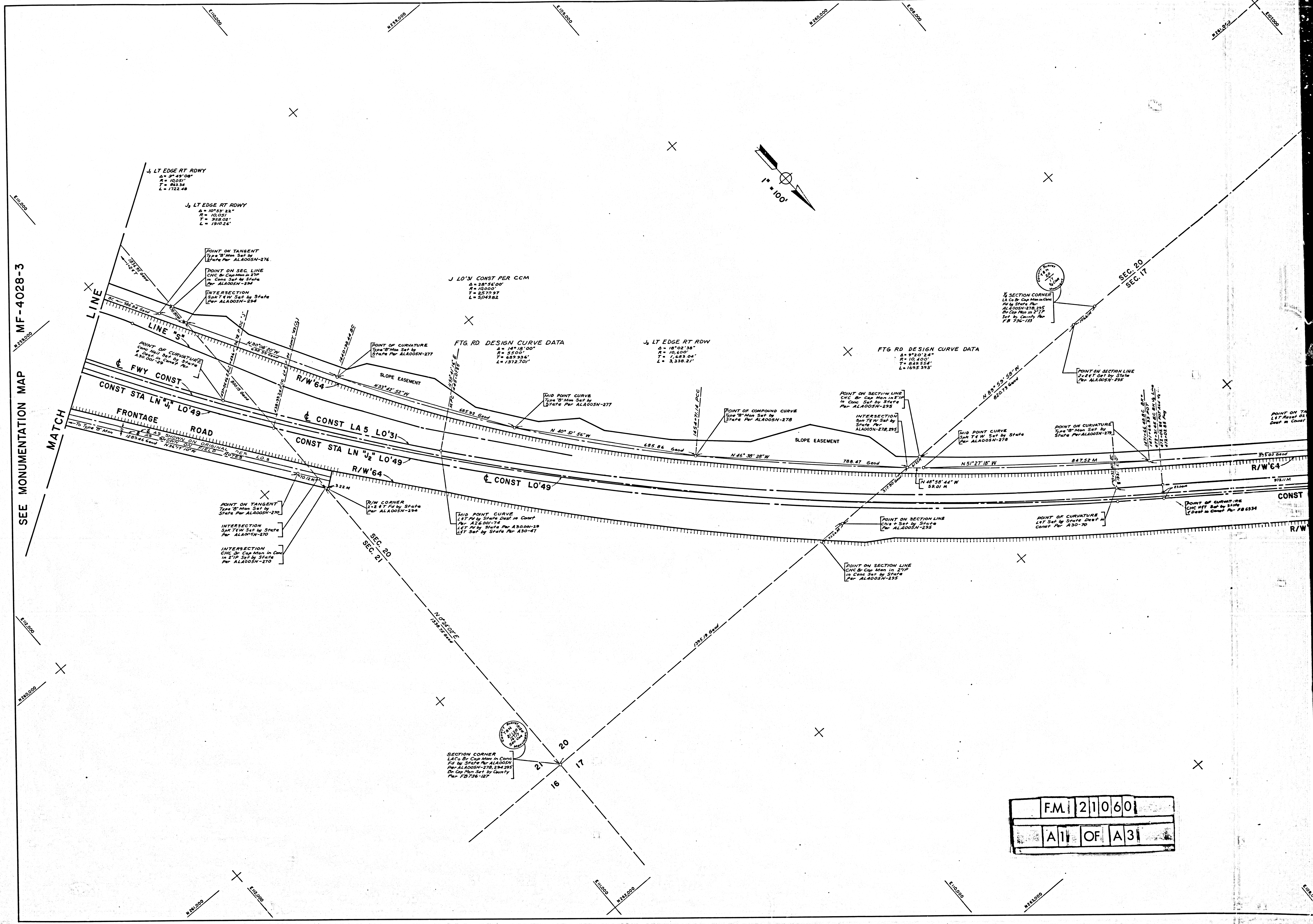
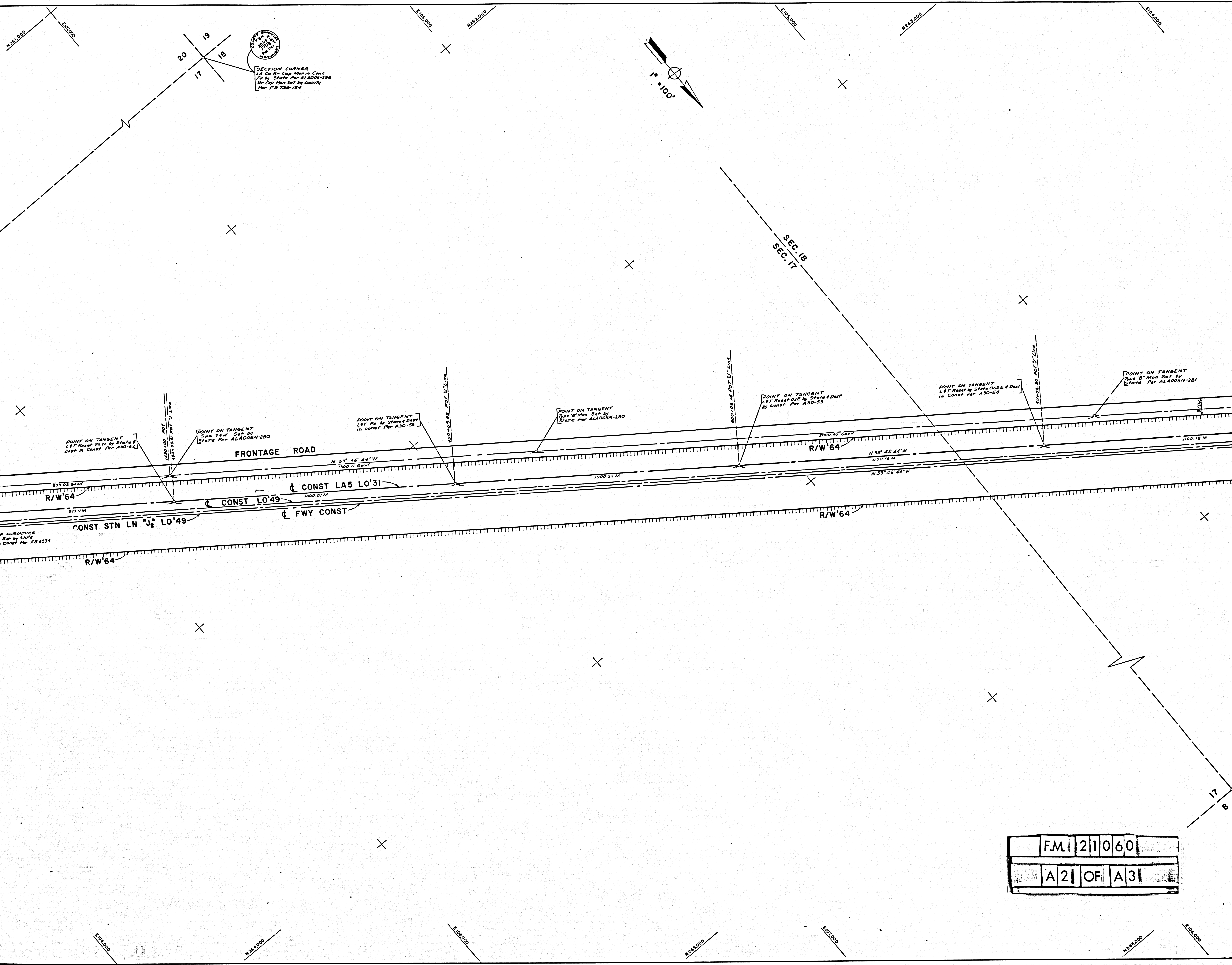


SEE MONUMENTATION MAP MF-4028-3



SECTION CORNER
LACs & Cap Man in Conc
Set by State Per ALA005N-270
Dr Cap Man Set by County
Per FB 736-12P

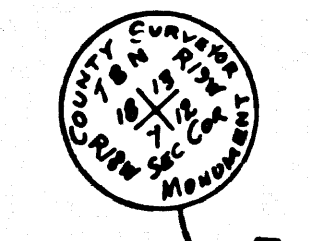
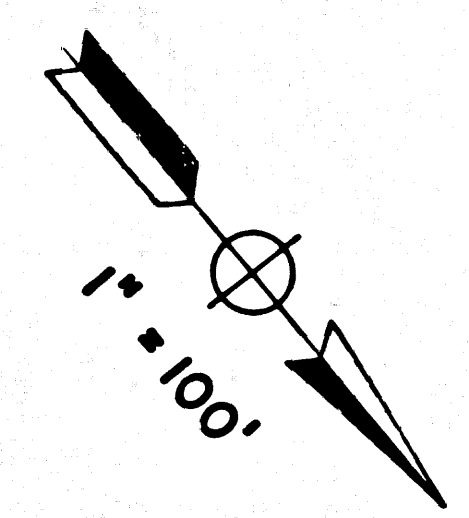
F.M. 21060
A1 OF A3



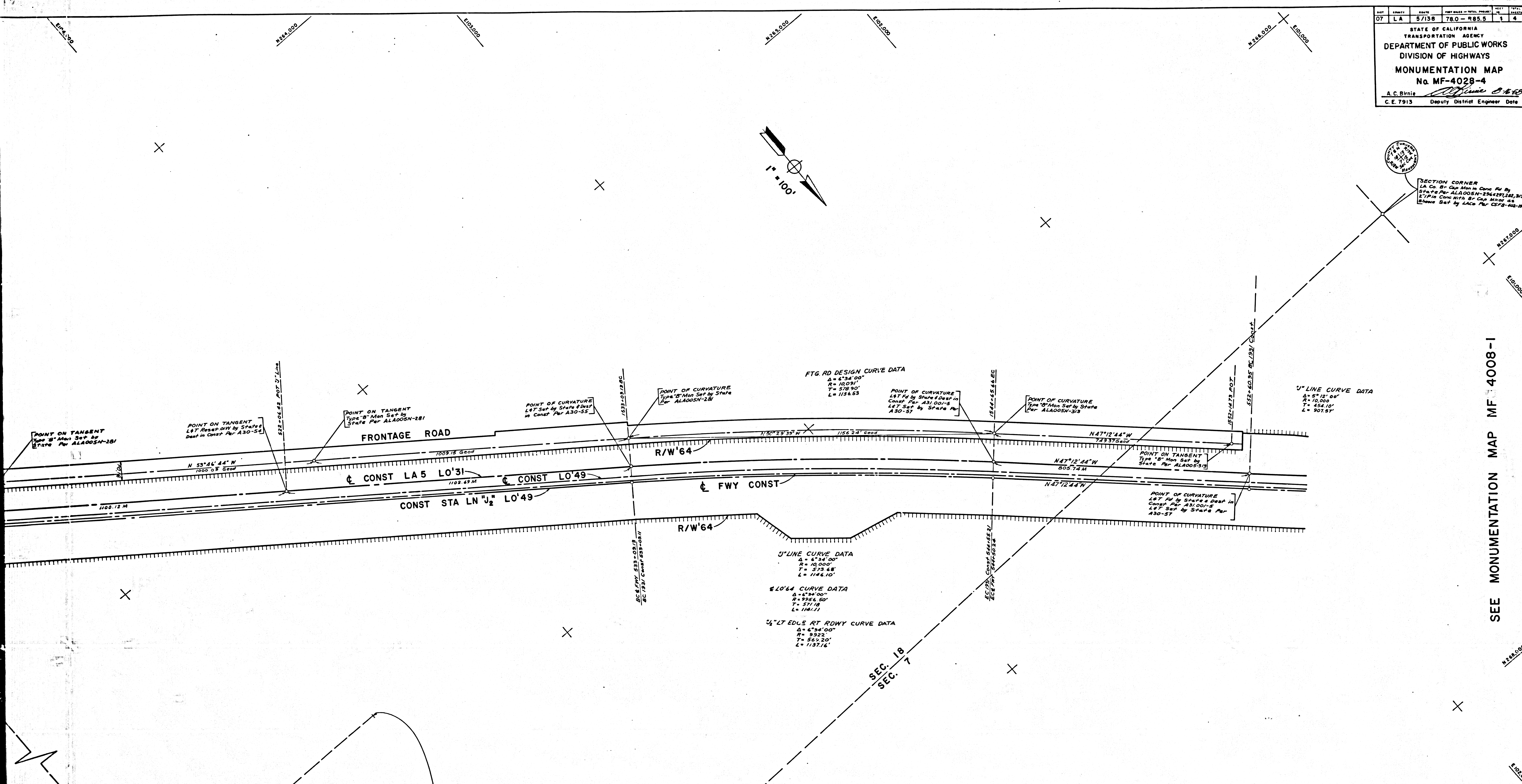
SECTION CORNER
1/8 CO. 5th Cap. Main in Care
of by State Per ALA005-296
for Cap. Main Set by County
Plan PB 724-124

SECTION CORNER
1/8 CO. 5th Cap. Main in Care
of by State Per ALA005-281, 284

F.M.	21060
A2	OF A3



SECTION CORNER
LA Co. Br. Cap Mon in Const. Per. By
State Per. ALA005N-281, 282, 283
2 1/2" Pin Cone with Br. Cap. Mon. 4 1/2"
Bore Set by L.A. Co. Per. CFB-402-20



IN LOS ANGELES COUNTY FROM 6.8 MILES SOUTH OF ROUTE 138 (LANCASTER RD.)
TO 0.6 MILES NORTH OF ROUTE 138 NEAR GORMAN

L.A. 5/138 P.M. 78.0 TO P.M. 85.5
CONSTRUCTION CONTRACT 07-035104 & 07-035194
COMPLETED 11-10-67

Survey Reference Notes
County Surveyors' Field Books:
FB 65-31, FB 305-98, FB 402-91, FB 652-6-14, 97-99, 109-115, FB 736-54, 58, 63, 67-70, 110, 127, 134, 136, 138, 141
CSB 1708 & CSB 1709
Division of Highways Field Books:
FB 653-4, A 20°27'10", A 26.00°24", A 30.00°22'25", 61, 82, 103, A 31.00°-5, A 78.00°-13, 47, ALA 005 N-228/233,
253/296, 306/319
1. Bearings are taken from CCM 30.2, 30.3, 31, 78.12 and are based on assumed coordinates. Bearing on CCMs
are based on Observations on Polaris.
2. Division of Highways survey information is available from Engineering Services Department located at 550
South Vermont Ave., Los Angeles, California.
3. Division of Highways Right-of-Way information is available from the Right-of-Way Department located at 120
South Spring St., Los Angeles, California.

SECTION CORNER
See Cox No. 74 by State
Per ALA005N-281, 286

F.M. | 21060 |
A3 | OF | A3 |

Chief of Party	DATE
ED NAVE	6/68
Dr. Designer	
E. STAHL	D. ROSMINI
Map Supervisor	Completed by
P. NASEVICH	L. WAHLWEBER
Project Engineer	
H. THOMAS	6/68
District Survey Engineer	
W. SORLIE	6/68
Approved recommended by	
Assistant District Engineer	
K. MCKEAN	8/68