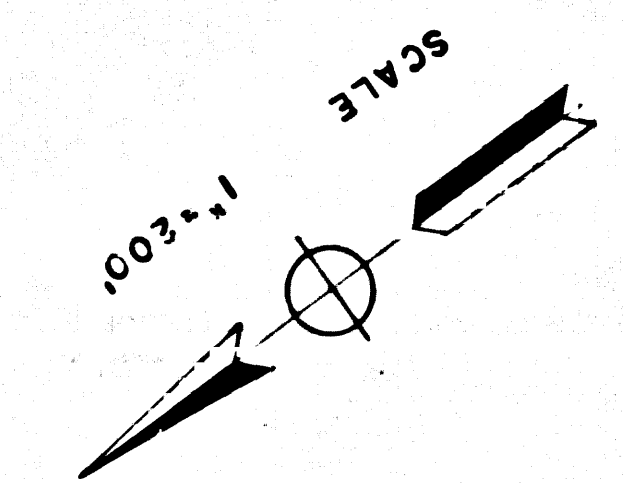
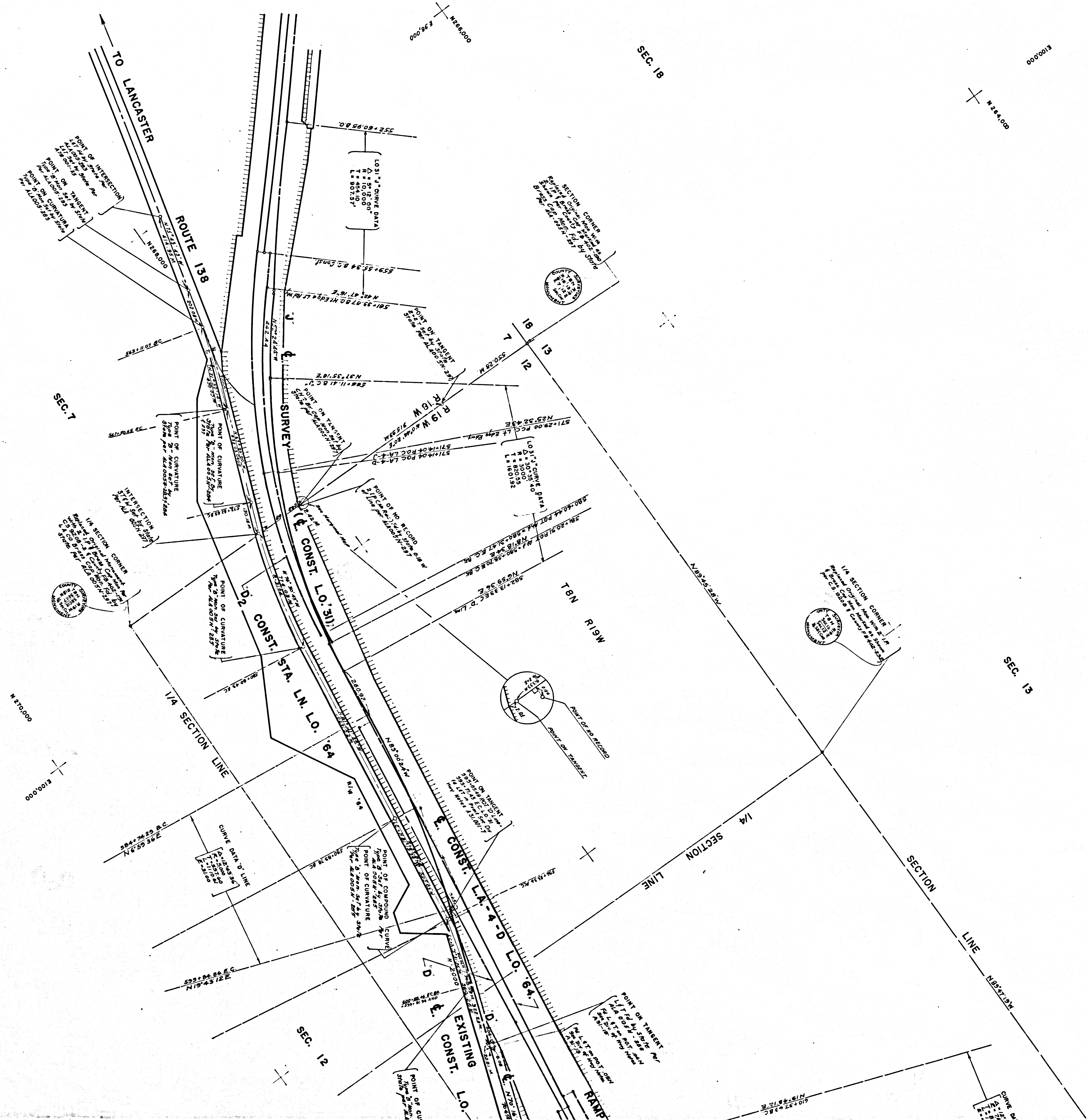
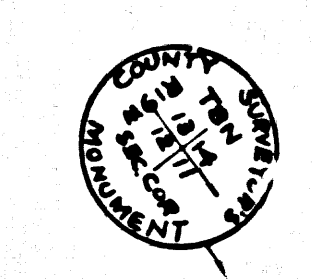
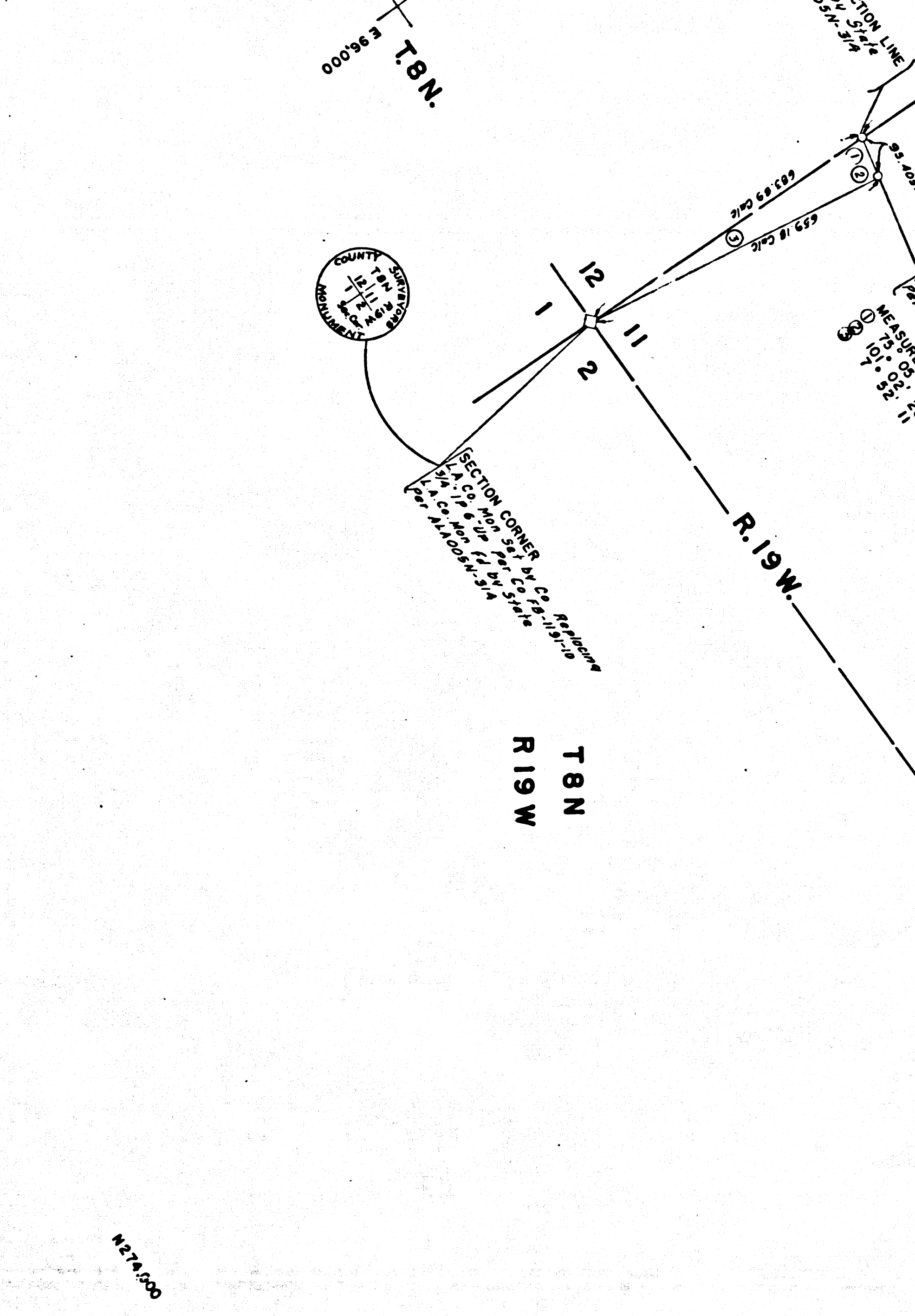
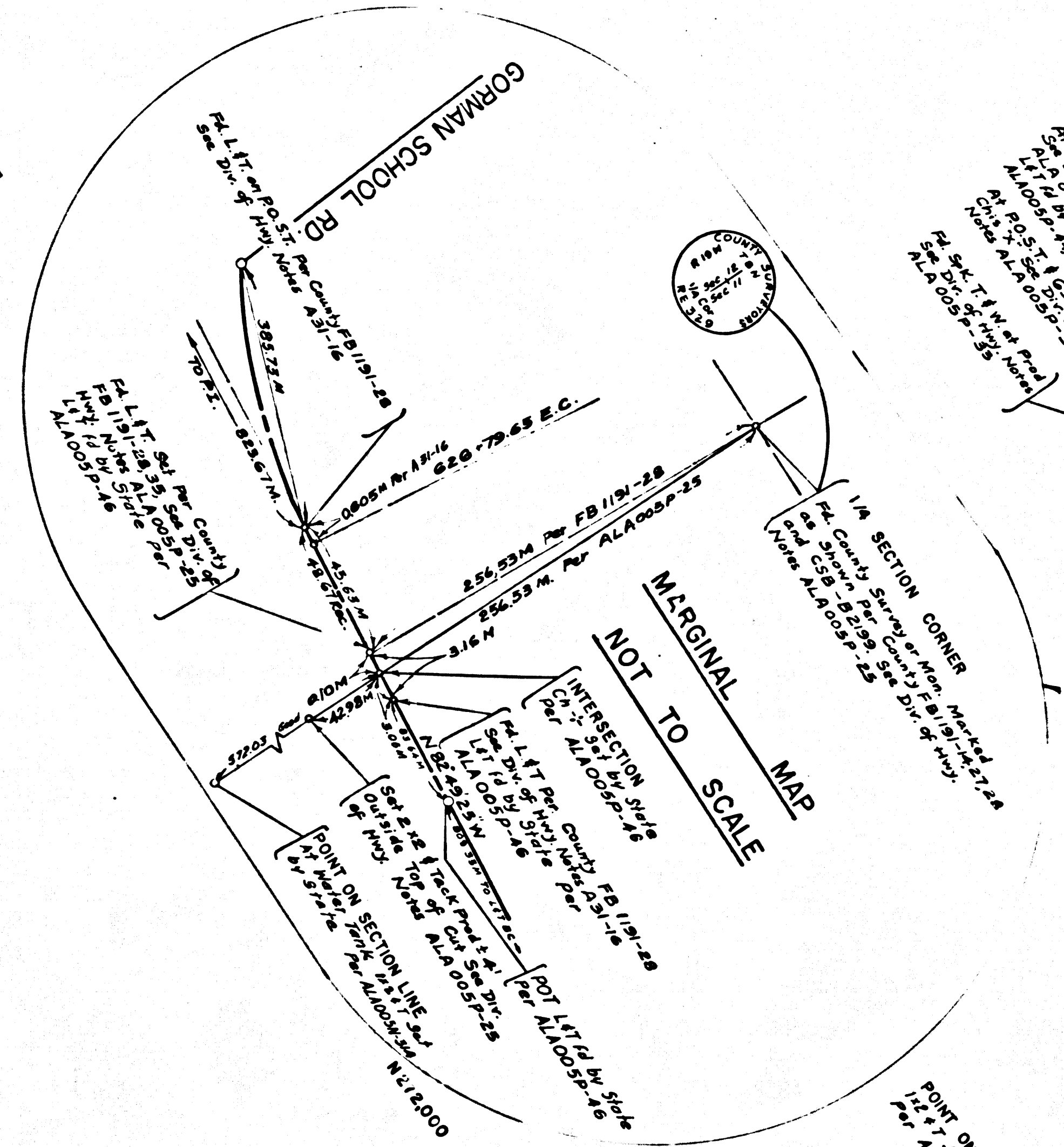


SEE MONUMENTATION MAP MF 4028-4



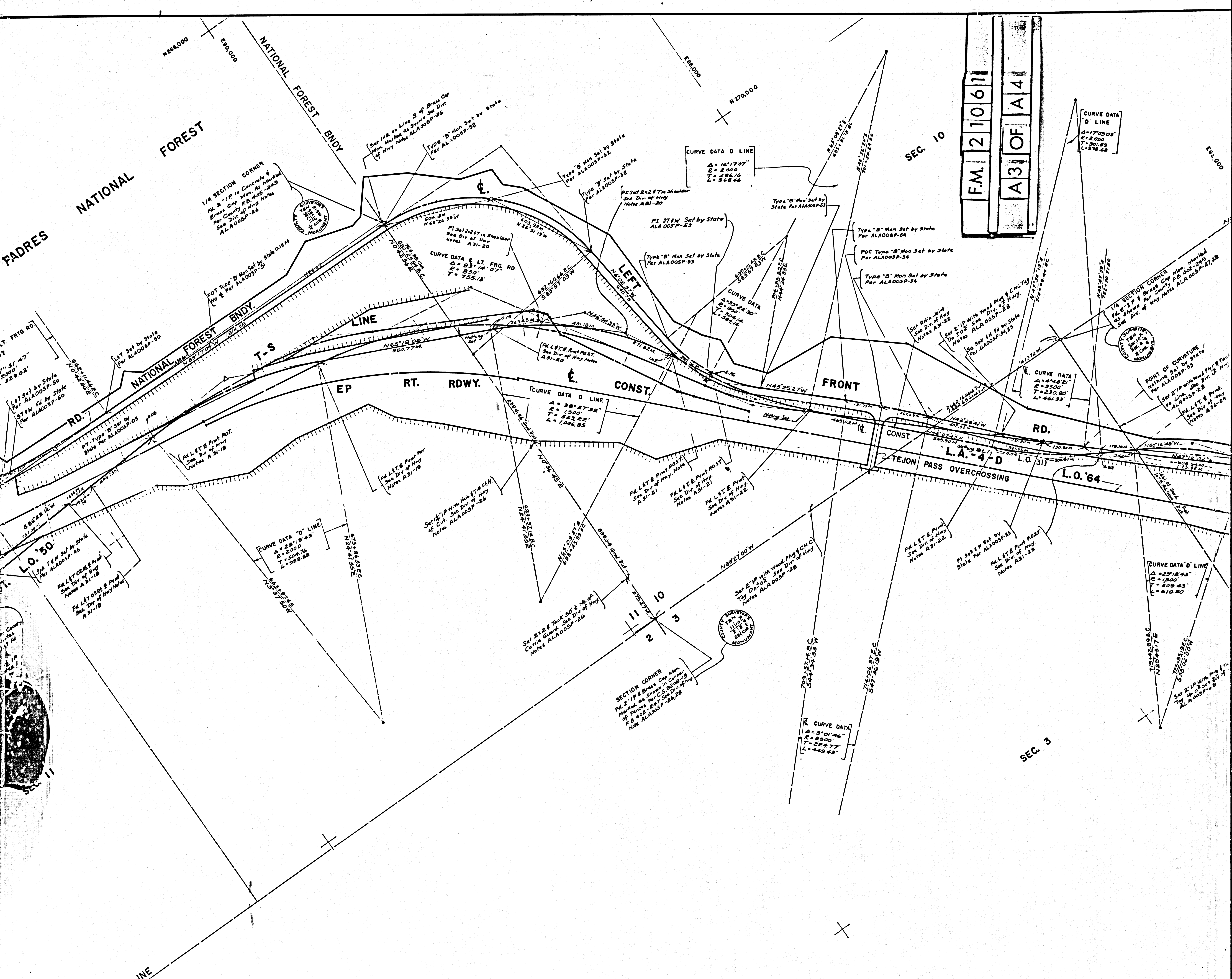
F.M.	21061
A1	OF A4





F.M. | 210611 |
A 2 | OF | A 4 |





IN LOS ANGELES COUNTY BETWEEN ROUTE 138 (NEAR GORMAN)
 TO CUDDY CREEK BRIDGE KERN COUNTY
 L.A.-KERN 5 PM 86.2 TO 89.5
 CONSTRUCTION CONTRACT 07-035203
 COMPLETED 12-20-66

- References-Notes:
- County Surveyor's Field Books:
 - FB 8-8,10,17,25,54; FB 402-85,86,91,102,104,105,190,232,234,245,247,249;
 - FB 191-7-14,27,28,35,36;
 - CSB 711-3, CS 9208-2,4,13, CS 9389-3.
 - Division of Highways Field Books:
 - A 31-15 to 28
 - A 31,001-7,24,25
 - A 78,001-33
 - ALAO05N-283,286,297,314
 - ALAO05P-22,25-30,42,44,46-61
 - Division of Highways Coordinate Control Map CCM 31 Dec. 1945 Revised Aug 1964
 - 1. Bearings are taken from CCM 31 and are on assumed coordinates. Bearings on CCMs are based on observations of Polaris.
 - 2. Division of Highways Survey information is available from Engineering Services Department located at 550 South Vermont Ave., Los Angeles, California.
 - 3. Division of Highways Right-Of-Way information is available from the Right-Of-Way Department located at 120 South Spring St., Los Angeles, California.

T 8 N
 R 19 W

SEC. 2

SEC. 3

SEC. 10

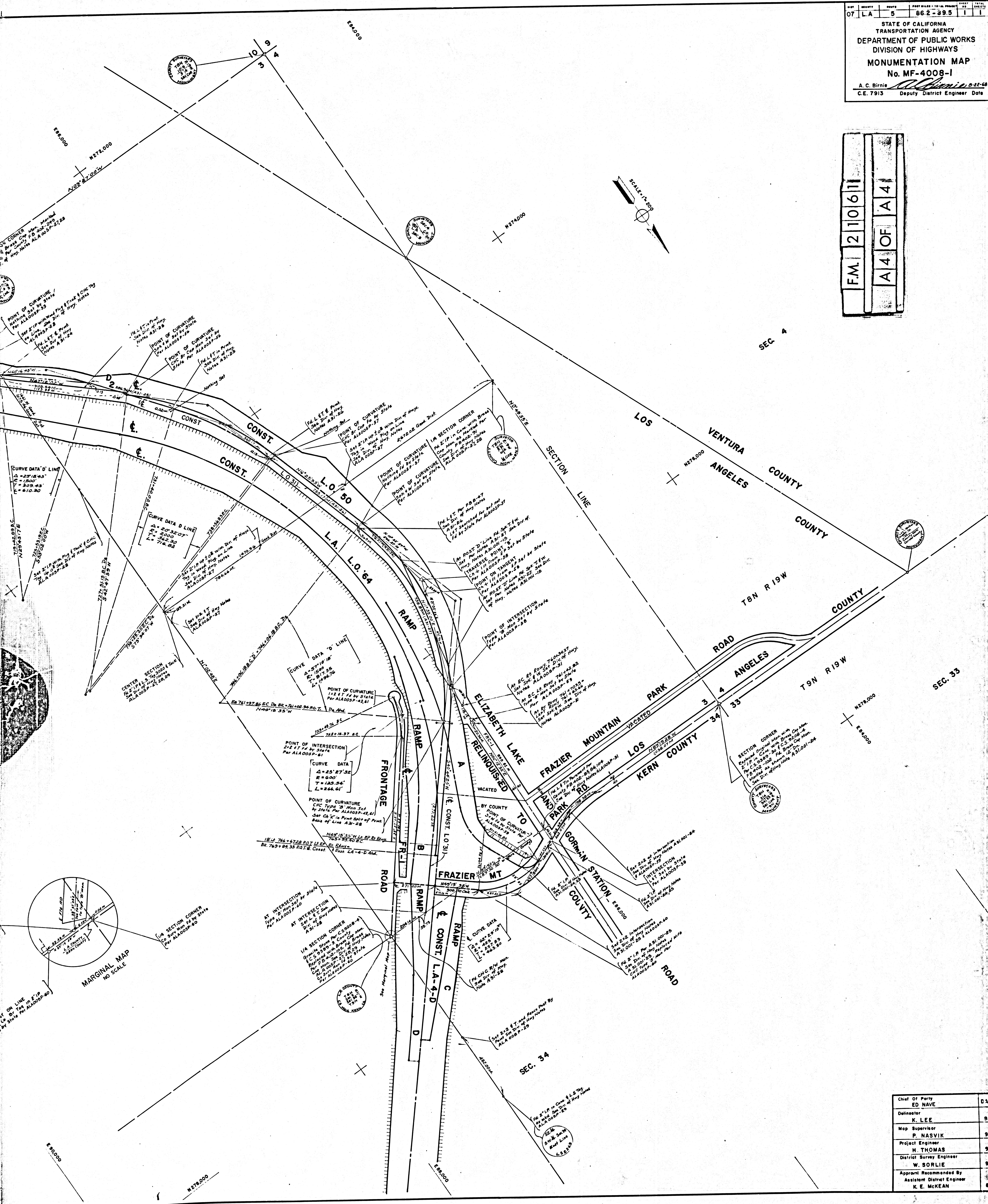
FM 210611
 A31 OF A4

POINT ON LINE
 L.A. Co. Sta. 86.2
 74 by Sta. Per ALAO05P-82

END OF ROAD
 Sta. 89.5
 Sta. Per ALAO05P-82

STATE OF CALIFORNIA
 TRANSPORTATION AGENCY
 DEPARTMENT OF PUBLIC WORKS
 DIVISION OF HIGHWAYS
 MONUMENTATION MAP
 No. MF-4008-1
 A. C. Birnie
 C.E. 7913 Deputy District Engineer Date

F.M. 210611
 A4 OF A4



Chief Of Party	DATE
ED NAVE	
Delineator	
K. LEE	9/67
Map Supervisor	
P. NASVIK	9/67
Project Engineer	
H. THOMAS	9/67
District Survey Engineer	
W. SORLIE	9/67
Approved Recommended By	
K. E. MCKEAN	9/68