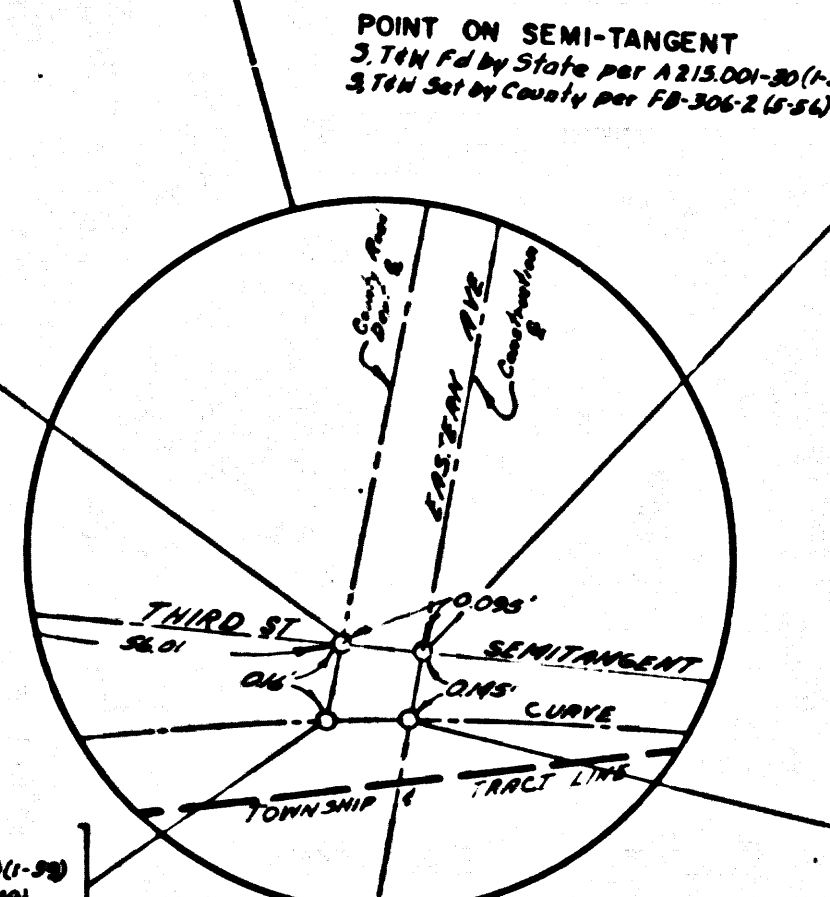


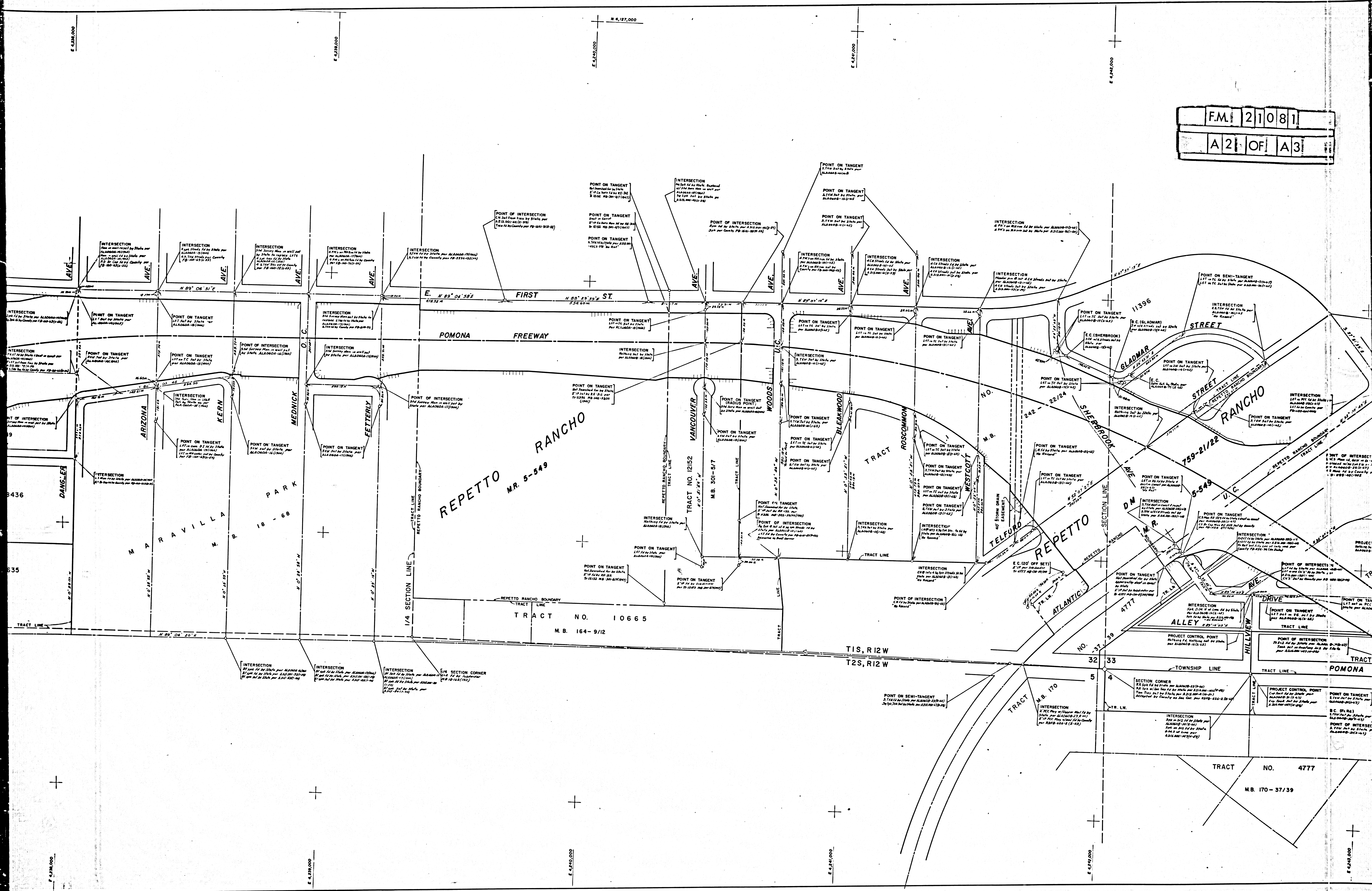
SEE MONUMENTATION MAP MF 4015-1

SEE MONUMENTATION MAP MF 4016-2 FOR CALL OUTS EAST OF EASTERN TO WEST OF DANGLER



DETAIL (NO SCALE)

F.M.	210811
A1	OF A3



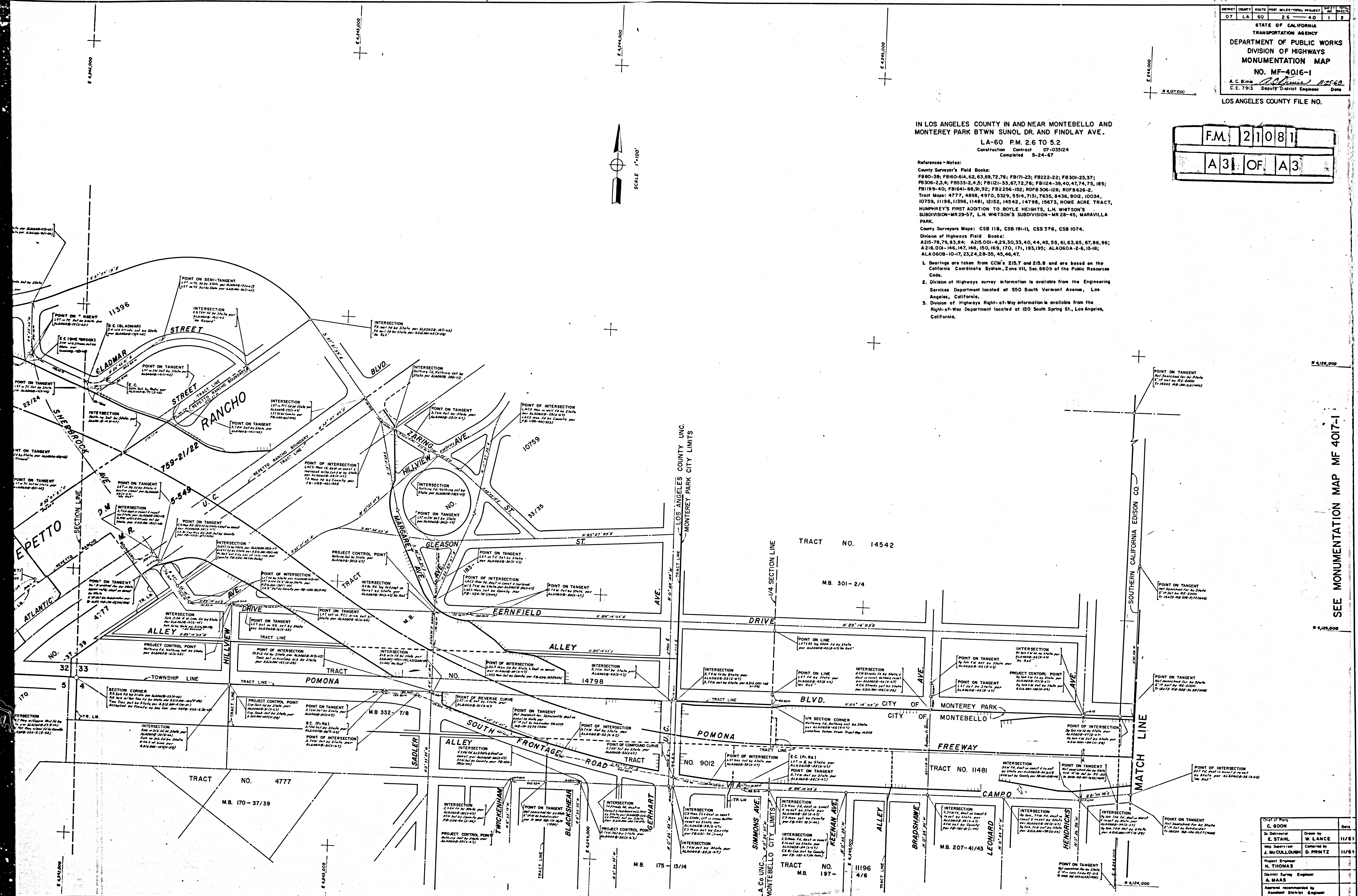
IN LOS ANGELES COUNTY IN AND NEAR MONTEBELLO AND MONTEREY PARK BTWN SUNOL DR. AND FINDLAY AVE.

LA-60 P.M. 2.6 TO 5.2
Construction Contract 07-033124
Completed 5-24-67

F.M. 21081
A 31 OF A 3

References - Notes:

- County Surveyor's Field Books:
FB80-39; FB160-61A, 62, 63, 69, 72, 76; FB171-23; FB222-22; FB301-23, 37;
FB306-23, 4; FB535-2, 4, 5; FB121-33, 37, 72, 78; FB124-39, 40, 47, 74, 75, 185;
FB119-40; FB164-88, 91, 92; FB2256-152; RDP 306-128; RDP 626-2.
Tract Maps: 4777, 4898, 4970, 5329, 5514, 7131, 7635, 8436, 9012, 10034,
10759, 11196, 11396, 11481, 12152, 14542, 14798, 15673, HOME ACRE TRACT,
HUMPHREY'S FIRST ADDITION TO BOYLE HEIGHTS, L.H. WHITSON'S
SUBDIVISION-MR29-37, L.H. WHITSON'S SUBDIVISION-MR 28-45, MARAVILLA
PARK.
County Surveyors Maps: CSB 118, CSB 191-11, CSB 376, CSB 1074.
Division of Highways Field Books:
A215-78, 79, 83, 84; A215.001-429, 30, 33, 40, 44, 45, 55, 61, 63, 65, 67, 66, 96;
A216.00-146, 147, 148, 150, 169, 170, 171, 193, 195; ALA060A-2-6, 13-18;
ALA060B-10-17, 23, 24, 28-35, 45, 46, 47.
1. Bearings are taken from CCM's 215.7 and 215.8 and are based on the California Coordinate System, Zone VII, Sec. 8809 of the Public Resources Code.
2. Division of Highways survey information is available from the Engineering Services Department located at 550 South Vermont Avenue, Los Angeles, California.
3. Division of Highways Right-of-Way information is available from the Right-of-Way Department located at 120 South Spring St., Los Angeles, California.



SEE MONUMENTATION MAP MF 4017-1

Chief of Party	C. GOON	Date	
St. Director	E. STAHL	Drawn by	W. LANCE 11/63
Map Supervisor	J. McCULLOUGH	Compiled by	D. PRINZ 11/63
Project Engineer	M. THOMAS		
District Survey Engineer	A. MAAS		
Approved and recommended by	R. McKEAN		

F.M. 21061