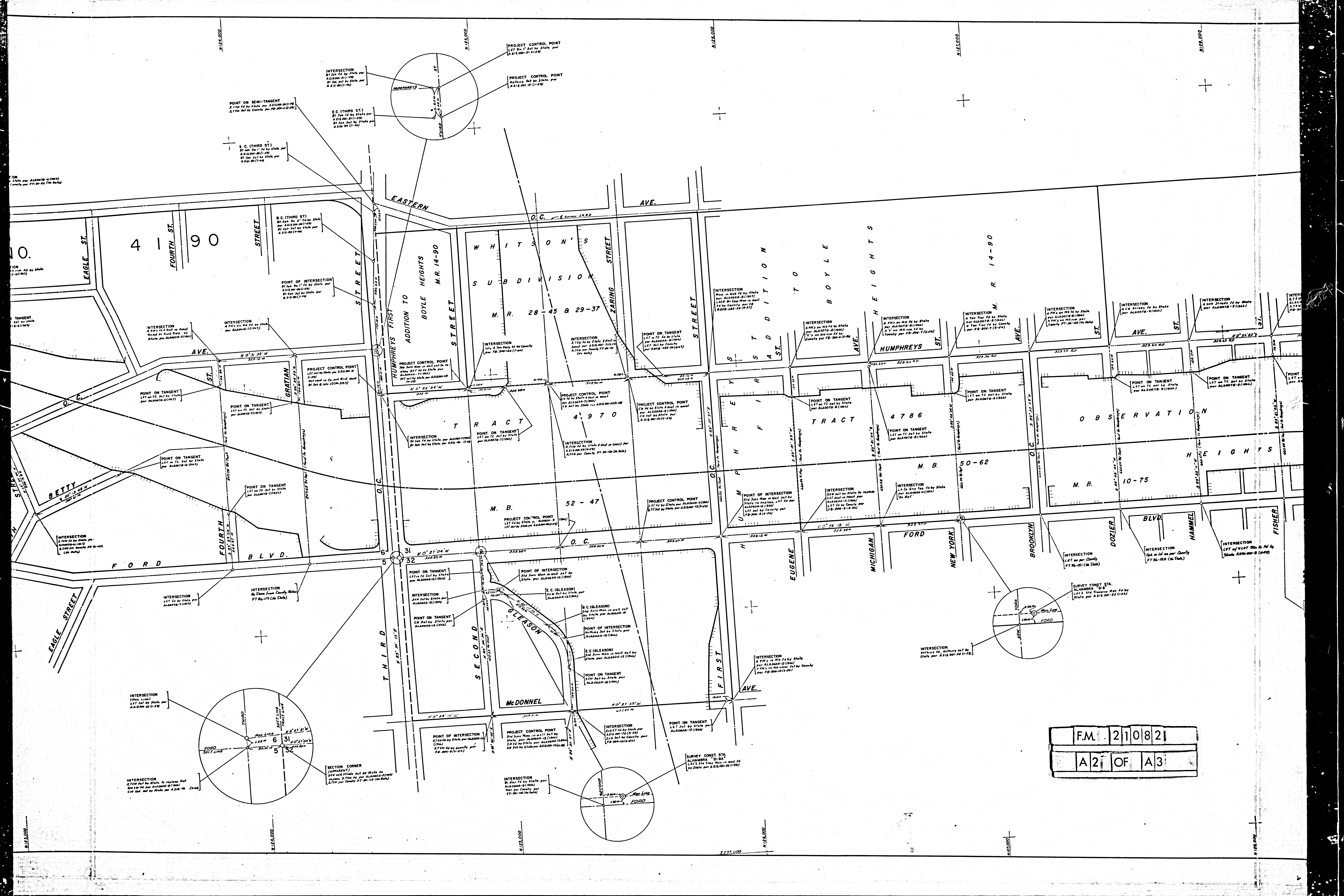


F.M.	210821
A1	OF A3

INTERSECTION  
 1.57' on FC set by State per  
 ALA0076-2 (1947)



SECTION CORNER  
SECTION 31  
SECTION 32

SECTION CORNER  
SECTION 31  
SECTION 32

SECTION CORNER  
SECTION 31  
SECTION 32

SECTION CORNER  
SECTION 31  
SECTION 32

SECTION CORNER  
SECTION 31  
SECTION 32

SECTION CORNER  
SECTION 31  
SECTION 32

SECTION CORNER  
SECTION 31  
SECTION 32

SECTION CORNER  
SECTION 31  
SECTION 32

SECTION CORNER  
SECTION 31  
SECTION 32

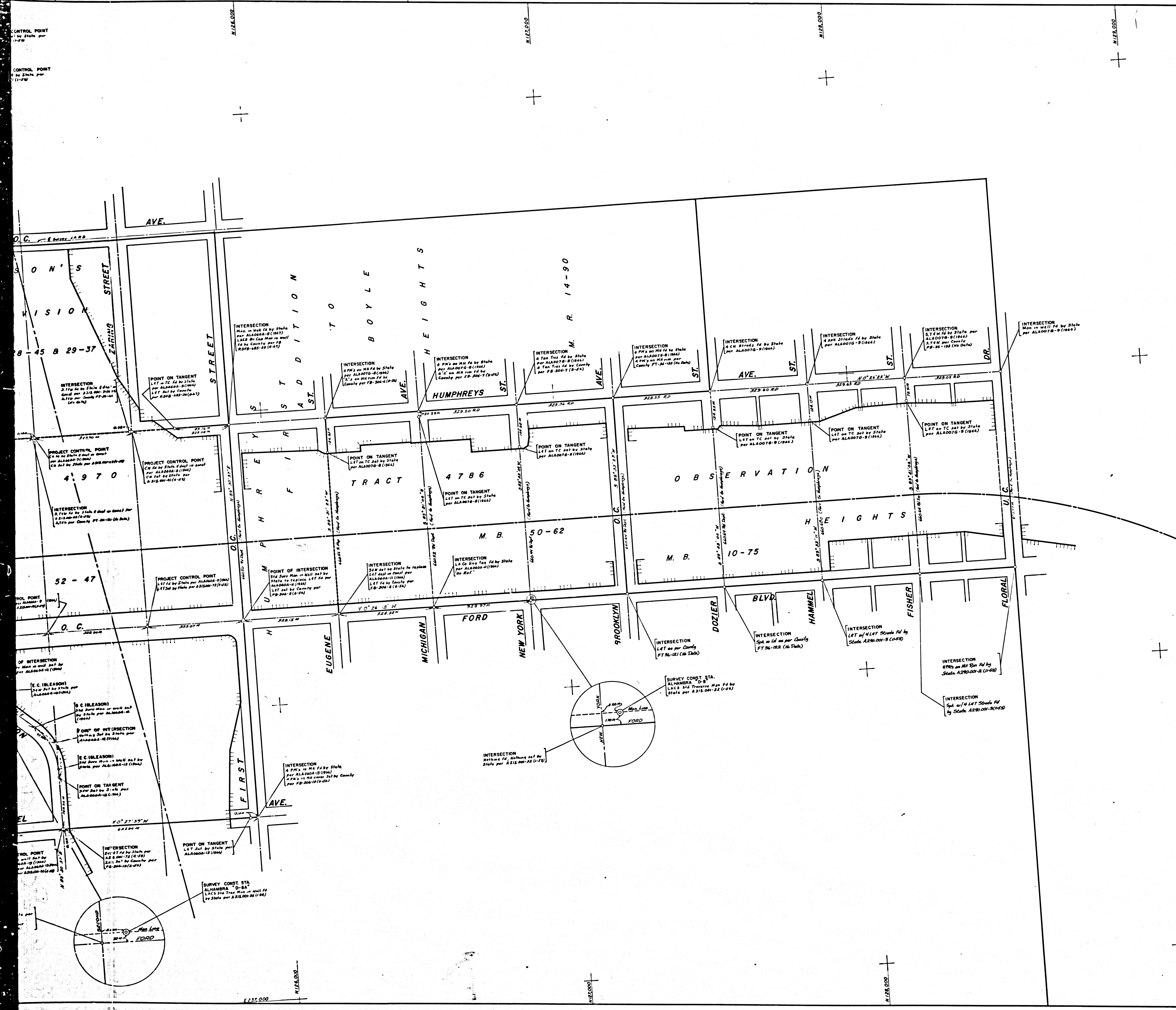
SECTION CORNER  
SECTION 31  
SECTION 32

SECTION CORNER  
SECTION 31  
SECTION 32

SECTION CORNER  
SECTION 31  
SECTION 32

SECTION CORNER  
SECTION 31  
SECTION 32

FM. 21082  
A2 OF A3



IN LOS ANGELES COUNTY IN AND NEAR MONTEREY PARK BETWEEN OLYMPIC BLVD. AND FLORAL DR.  
LA-007 P.M. 237 TO 252  
Construction Contract 07-033124  
Completed 3-24-67

- References-Notes:
- County Surveyor's Field Books: FT 36-82, 99, 118, 127, 130, 131, 133, 135; F8306-2, 6-10; F8340-124. Tract Maps: 4190, 4768, 4786, 4970, 5135, HUMPHREY'S, FIRST ADDITION TO BOYLE HEIGHTS, OBSERVATION HEIGHTS, WHITSON'S SUBDIVISION.
  - Division of Highways Field Books: A 215-80, 81; A 215.001-30, 31, 32, 69, 71, 72, 81; ALA007G-4-9; ALA060A-8, 9, 11, 12, 13
  - Bearings are taken from CCM's 2143, 2157 and 290.1 and are based on the California Coordinate System, Zone VII, Sec. 8809 of the Public Resources Code.
  - Division of Highways survey information is available from the Engineering Services Department located at 550 South Vermont Ave., Los Angeles, California
  - Division of Highways Right-of-Way information is available from the Right of Way Department located at 120 South Spring St., Los Angeles, California.

F.M. 21082  
A 3 OF A 3

Chief of Party	C. BOOM	Date	
Dr. Designer	E. STAHL	Drawn by	W. LANCE
Map Supervisor	J. McCULLOUGH	Compiled by	D. PRINTZ
Project Engineer	H. THOMAS		
District Survey Engineer	A. WAAS		
Approved recommended by	K. McKEAN		

F.M. 21082