

NO	NAME	DESCRIPTION	REFERENCE	REMARKS
1	1/4 COR	FD LA CO SURV MON	RLA04F	79
2		FD SPR T&W	"	79
3		SET BT SPR&W	"	"
4	SECCOR	FD LA CO MON	"	82 N348575.69 E237278.64
5		SET RAMSET	"	101
6		SET 3/4" IP PLASTIC PLUG	"	"
7		"	"	"
8		"	"	"
9		"	"	"
10		"	"	"
11		"	"	102
12		"	"	"
13		SET 1/2" IP PLASTIC PLUG	"	"
14		SET 3/4" IP PLASTIC PLUG	"	"
15		SET 2x2 T	"	78
16	1/4 COR	FD LA CO SURV MON	"	78 81 N371350.31 E237241.49
17		SET 1 1/2" IP & CHC BR CAP	"	105
18		SET DIV/HWYS TAG & T	RLA04F	"
19		SET 3/4" IP PLASTIC PLUG	"	"
20		"	"	"
21		SET DIV/HWYS TAG & T	"	"
22		SET 3/4" IP PLASTIC PLUG	"	"
23		SET DIV/HWYS TAG & T	"	104
24		SET 3/4" IP PLASTIC PLUG	"	"
25		SET NOTHING	"	"
26		"	"	"
27		SET 1 1/2" IP/DIV HWYS BR TAG	"	289
28		SET 1" IP PLASTIC PLUG	"	"
29		"	"	"
30		"	"	286
31		"	"	"
32		"	"	"
33		"	"	"
34		"	"	"
35		SET 1 1/2" IP/DIV HWYS BR TAG	"	389

LEGEND

- ⊙ SURVEY CONTROL POINTS
- MONUMENTS SET OR FOUND, ALSO B'S AND E C'S
- △ ANGLE POINTS
- ◇ SECTION CORNERS, RANCHO CORNERS
- RECORDED VALUE AS ESTABLISHED PREVIOUSLY
- () VALUE ESTABLISHED BY DISTRICT OF RIGHT OF WAY BRANCH

NOTE

- BEARINGS ARE BASED ON THE CALIFORNIA COORDINATE SYSTEM, DIVISION 8, SECTION 8608 OF THE 1953 PUBLIC RESOURCES CODE
- DEPARTMENT OF TRANSPORTATION SURVEY INFORMATION IS AVAILABLE FROM THE SURVEY SECTION OF THE ENGINEERING SERVICES BRANCH, LOS ANGELES, CALIFORNIA
- DEPARTMENT OF TRANSPORTATION RIGHT OF WAY INFORMATION IS AVAILABLE FROM THE RIGHT OF WAY BRANCH, LOS ANGELES, CALIFORNIA
- STATIONING SHOWN ON THIS MAP IS FOR REFERENCE ONLY

IN LOS ANGELES COUNTY

BLK. 3723 MOD. 05

TO OBTAIN GROUND LEVEL DISTANCES, APPLY GRID FACTOR 0.99922222.

GRID WAS ESTABLISHED FROM LOS ANGELES COUNTY CONTROL POINTS PER 1964 ADJUSTMENT AS SHOWN BY POINTS S.A. 16

CONSTRUCTION CONTRACT NO. 07-504.035024 COMPLETION DATE: 9-3-69

SCALE: 1" = 100'

100 200 300 400 500 FEET

LOS ANGELES COUNTY FILE NO.

STATE OF CALIFORNIA - DEPARTMENT OF TRANSPORTATION - SURVEYS

DISTRICT	COUNTY	ROUTE	POST MILES - TOTAL PROJECT	PROJECT MILES	DATE	Chief of Party	Office Supervisor
07	LA	14	63.0-77.0	14	12	T. THOMPSON	DON EBERLY

MONUMENTATION MAP

MAP NO. LA14M 69.0

CALIFORNIA COORDINATE SYSTEM - ZO. 7

NOTE: BASIS OF BEARING AS PER 20th ST.

FM 21083-1

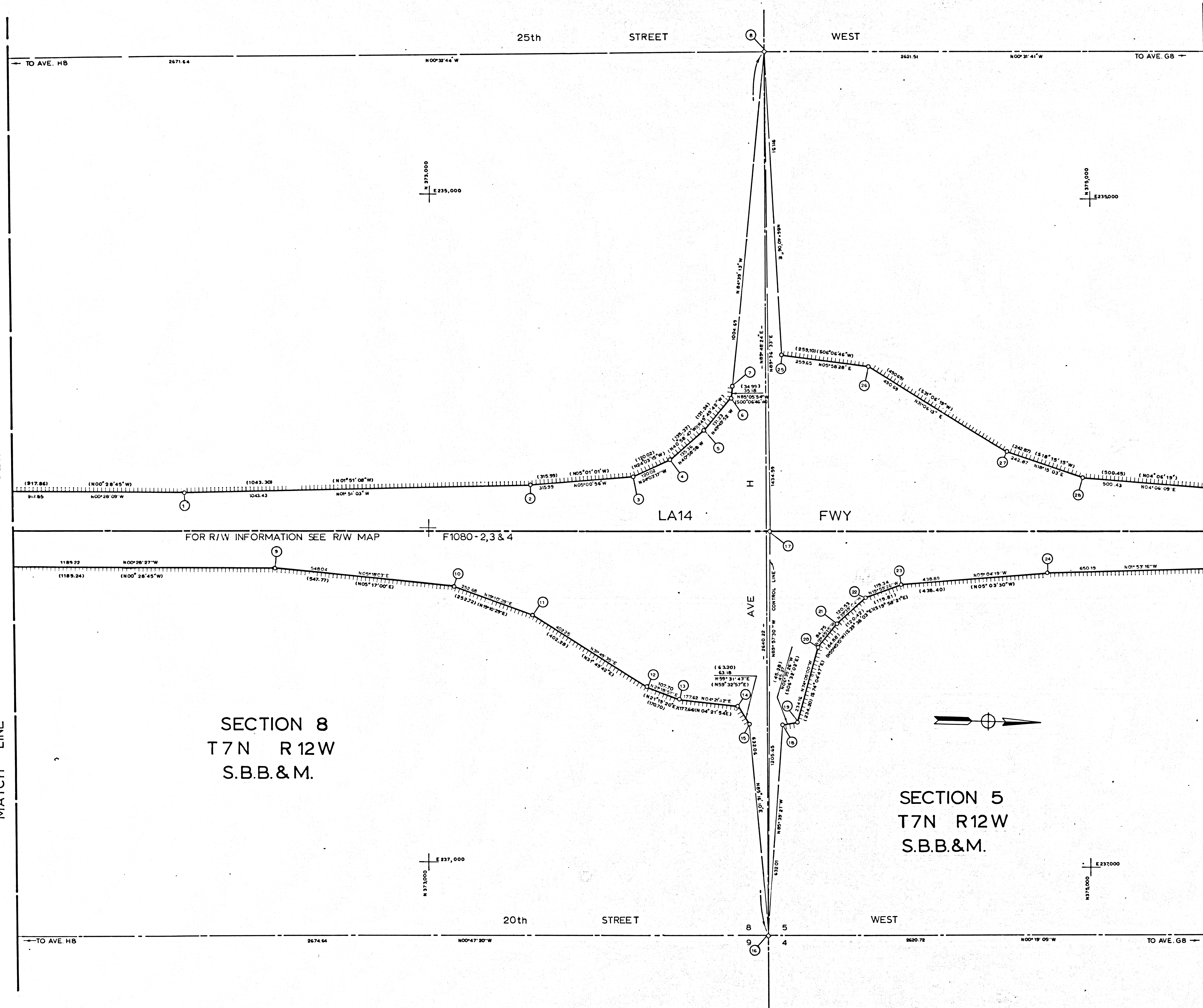
F.M. 21083-1

SEE LA014M695

MATCH LINE

SEE LA014M70.5

MATCH LINE



NO	NAME	DESCRIPTION	REFERENCE	REMARKS
1		SET 3/4" IP & PLASTIC PLUG	RLA014F 108	
2		SET DIV OF HWYS BR TAG & T	RLA014F 102	
3		SET DIV OF HWYS BR TAG & T	RLA014F 103	
4		SET 3/4" IP & PLASTIC PLUG	RLA014F 103	
5		"	"	"
6		"	"	"
7		SET 1 1/2" IP/CHC BR CAP	RLA014F 103	
8	1/4 COR	FD LA CO MON	RLA014F 73,103	
9		SET RAMSET NAIL & BR TAG	RLA014F 106	
10		"	"	"
11		NOTHING SET	RLA014F 106	
12		SET DIV OF HWYS TAG & T	RLA014F 107	
13		SET RAMSET NAIL & BR TAG	RLA014F 107	
14		"	"	"
15		SET 1 1/2" IP/CHC BR CAP	RLA014F 107	
16	SEC COR	FD BT SP&W	RLA014F 75,107	N 374,024.50 E 237,204.66
17		FD L&T ON BRIDGE	RLA014F 090	
18		SET 1 1/2" IP & PLASTIC PLUG	RLA014F 111	
19		SET 3/4" IP & PLASTIC PLUG	RLA014F 111	
20		"	"	"
21		"	"	"
22		"	"	"
23		SET 3/4" IP & PLASTIC PLUG	RLA014F 112	
24		"	"	"
25		SET 1 1/2" IP/CHC BR CAP	RLA014F 108	
26		SET 3/4" IP & PLASTIC PLUG	RLA014F 108	
27		"	"	"
28		"	"	"

- LEGEND
- SURVEY CONTROL POINTS
 - MONUMENTS SET OR FOUND, ALSO B.C.'S AND E.C.'S
 - ANGLE POINTS
 - SECTION CORNERS, RANCHO CORNERS
 - RECORDED VALUE AS ESTABLISHED PREVIOUSLY
 - () VALUE ESTABLISHED BY DISTRICT 07 RIGHT OF WAY BRANCH

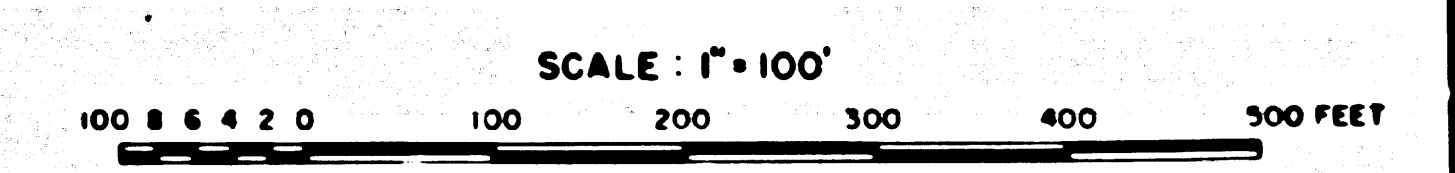
NOTE:
 1. BEARINGS ARE BASED ON THE CALIFORNIA COORDINATE SYSTEM, DIVISION 8, SECTION 8809 OF THE 1953 PUBLIC RESOURCES CODE.
 2. DEPARTMENT OF TRANSPORTATION SURVEY INFORMATION IS AVAILABLE FROM THE SURVEY SECTION OF THE ENGINEERING SERVICES BRANCH, LOS ANGELES, CALIFORNIA.
 3. DEPARTMENT OF TRANSPORTATION RIGHT OF WAY INFORMATION IS AVAILABLE FROM THE RIGHT OF WAY BRANCH, LOS ANGELES, CALIFORNIA.
 4. STATIONING SHOWN ON THIS MAP IS FOR REFERENCE ONLY.

IN LOS ANGELES COUNTY

BLK. 3723 MOD. 45

TO OBTAIN GROUND LEVEL DISTANCES APPLY GRID FACTOR 0.99992992
 GRID WAS ESTABLISHED FROM LOS ANGELES COUNTY CONTROL POINTS
 PER 1964 ADJUSTMENT AS SHOWN BY POINT 16.

CONSTRUCTION CONTRACT NO. 07-504 036024 COMPLETION DATE: 9-3-68



LOS ANGELES COUNTY FILE NO.

STATE OF CALIFORNIA - DEPARTMENT OF TRANSPORTATION - SURVEYS			
DISTRICT	COUNTY	ROUTE	POST MILES - TOTAL PROJECT
07	L.A.	14	65.0-77.0
Sheet	TOTAL SHEETS	Checked by	Office Supervisor
2	12	T. THOMPSON	DON EMBURY
MONUMENTATION MAP			
Map No.	LA14M700	Checked by	R. CARTER
		Project Engineer	Donated by H. HODGINS & S. CURRIE
		Checked by	
		Date	
CALIFORNIA COORDINATE SYSTEM - ZONE 7			

NOTE: BASIS OF BEARING AS PER 20th ST.

F.M. 21083-2

