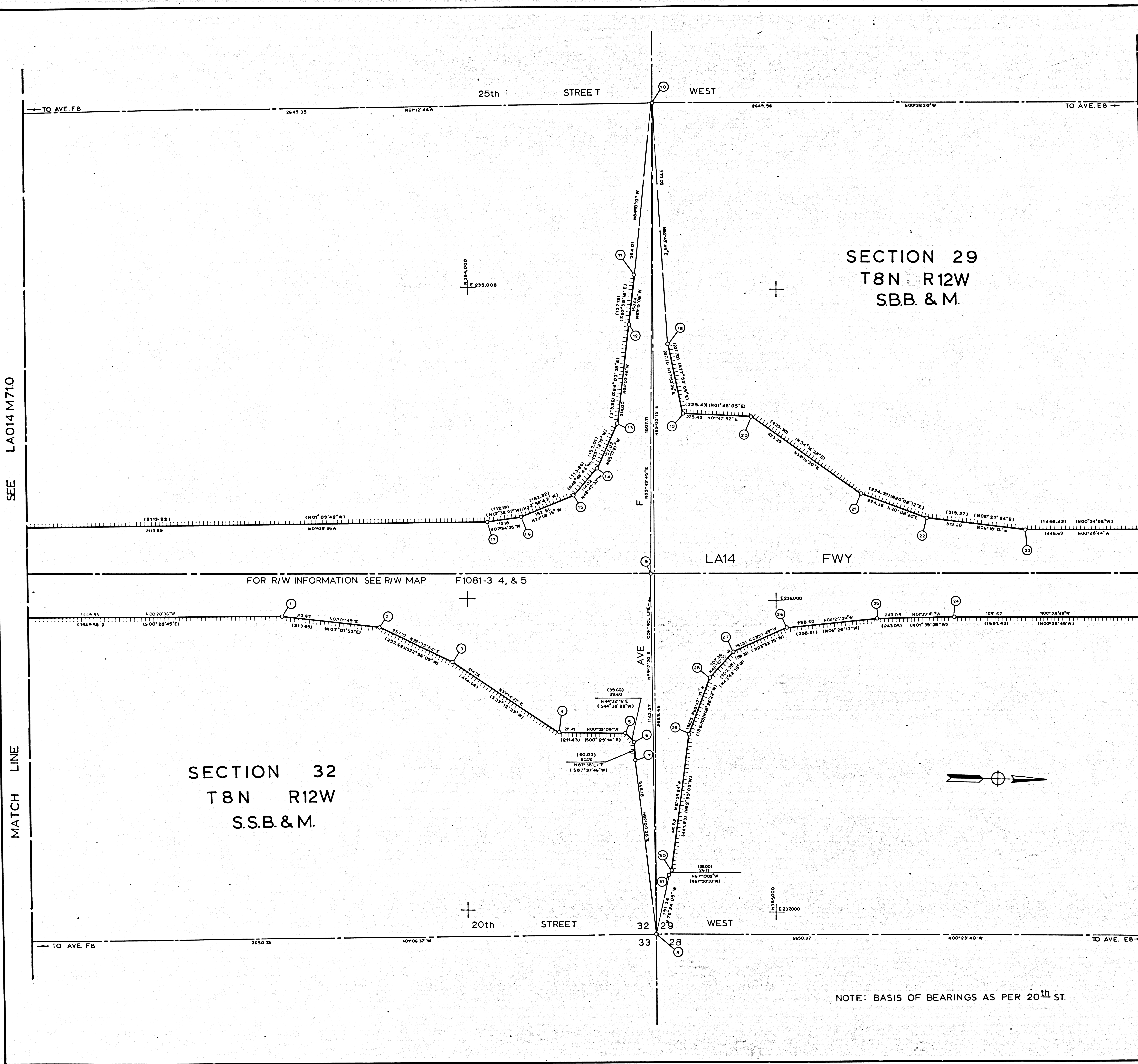


SEE LA014 M710

MATCH LINE



NO	NAME	DESCRIPTION	REFERENCE	REMARKS
1		SET 3/4" P/PLASTIC PLUG	RLA014F 121	
2		"	"	
3		"	"	
4		"	RLA014F 122	
5		SET RSN & D.G.M. BRASS TAG	"	
6		"	"	
7		SET 3/4" P/PLASTIC PLUG	"	
8	SEC. COR.	FD.L.A.CO.BR CAP MOH. IN WELL	RLA014F 85,92	N 384,512.56 E 237,022.89
9		FD L&T	"	
10	1/4 COR.	FD.L.A.CO.BR CAP MOH. IN WELL	"	N 384,591.01 E 234,403.92
11		SET 3/4" P/PLASTIC PLUG	RLA014F 118	
12		"	"	
13		"	"	
14		"	"	
15		"	RLA014F 117	
16		"	"	
17		"	"	
18		SET 1 1/2" P/CHC BR CAP	RLA014F 123	
19		SET 3/4" P/PLASTIC PLUG	"	
20		"	"	
21		"	RLA014F 124	
22		"	"	
23		"	"	
24		"	RLA014F 126	
25		"	"	
26		"	"	
27		"	RLA014F 125	
28		"	"	
29		"	"	
30		"	"	
31		SET 1 1/2" P/CHC BR CAP	"	

SEE LA014M725

MATCH LINE

- LEGEND**
- ⊙ SURVEY CONTROL POINTS
 - MONUMENTS SET OR FOUND, ALSO B.C.'S AND E.C.'S
 - △ ANGLE POINTS
 - SECTION CORNERS, RANCHO CORNERS
 - ⊕ RECORDED VALUE AS ESTABLISHED PREVIOUSLY
 - [] VALUE ESTABLISHED BY DISTRICT OF RIGHT OF WAY BRANCH

- NOTE:**
- BEARINGS ARE BASED ON THE CALIFORNIA COORDINATE SYSTEM, DIVISION 8, SECTION 8809 OF THE 1953 PUBLIC RESOURCES CODE.
 - DEPARTMENT OF TRANSPORTATION SURVEY INFORMATION IS AVAILABLE FROM THE SURVEY SECTION OF THE ENGINEERING SERVICES BRANCH, LOS ANGELES, CALIFORNIA.
 - DEPARTMENT OF TRANSPORTATION RIGHT OF WAY INFORMATION IS AVAILABLE FROM THE RIGHT OF WAY BRANCH, LOS ANGELES, CALIFORNIA.
 - STATIONING SHOWN ON THIS MAP IS FOR REFERENCE ONLY.

IN LOS ANGELES COUNTY
 BLK. 3823 MOD. 45

TO OBTAIN GROUND LEVEL DISTANCES APPLY GRID FACTOR 0.99922388
 GRID WAS ESTABLISHED FROM LOS ANGELES COUNTY CONTROL POINTS
 PER 1964 ADJUSTMENT AS SHOWN BY POINT 8.

CONSTRUCTION CONTRACT NO. 07-504 036024 COMPLETION DATE: 9-3-62
 SCALE: 1" = 100'
 100 200 300 400 500 FEET

LOS ANGELES COUNTY FILE NO.

DISTRICT	COUNTY	ROUTE	POST MILES - TOTAL PROJECT	FILE NO.	TOTAL SHEETS	Sheet No.	Checked by	Office Sub-charge
07	LA	14	66.0-77.0	5	12		T. THOMPSON	DON EBERLY

MONUMENTATION MAP

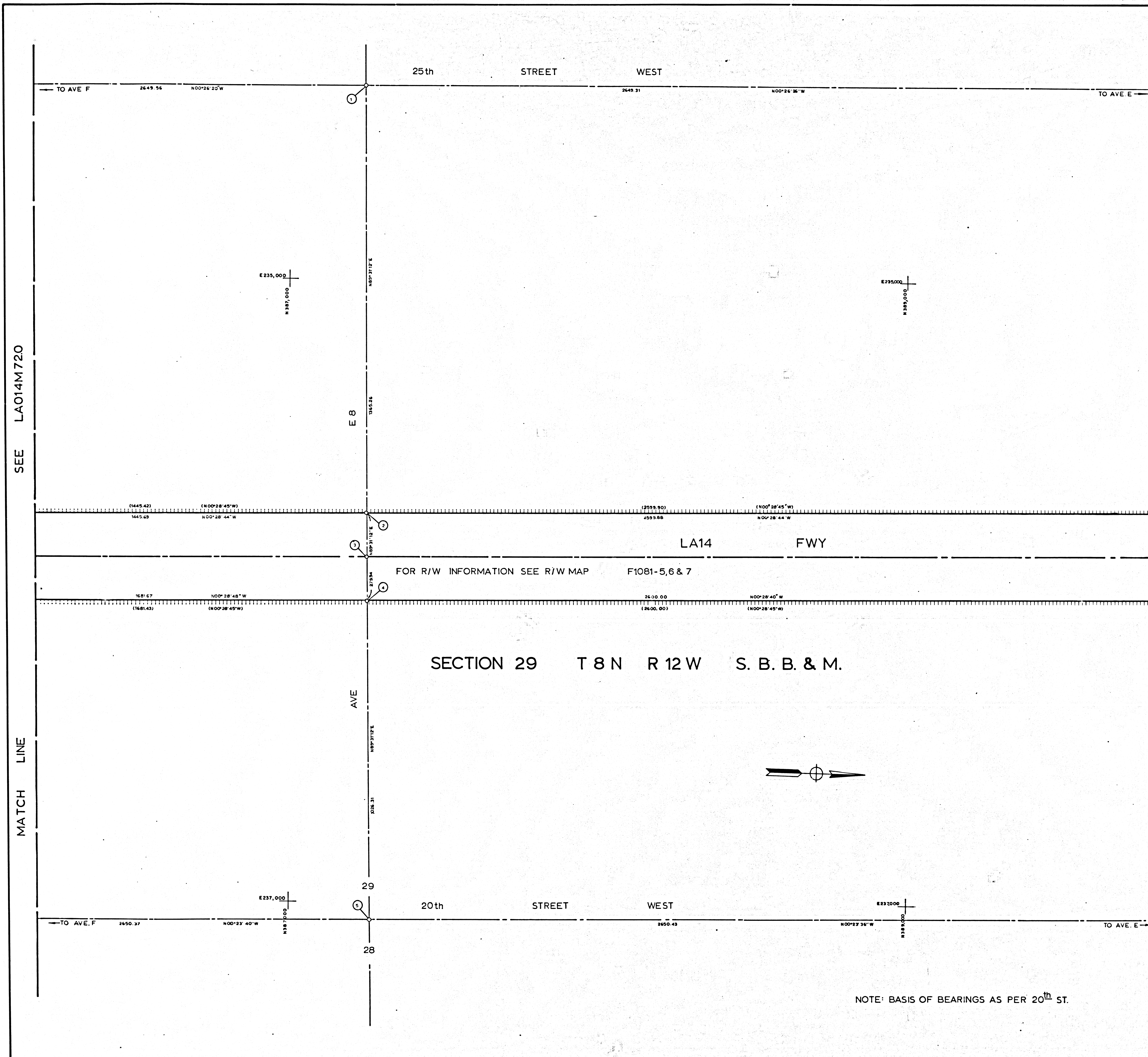
MAP NO. LA 14 M 720

CAC & Compiled by: S. CURRIE
 Project Engineer: S. CURRIE
 Checked by: F. CARTER
 Drawn by: H. HUGHES & S. CURRIE

CALIFORNIA COORDINATE SYSTEM - ZONE 7

NOTE: BASIS OF BEARINGS AS PER 20th ST.

F.M. 21084-1



NOTE: BASIS OF BEARINGS AS PER 20th ST.

NO	NAME	DESCRIPTION	REFERENCE	REMARKS
1	CTR SEC	FD LA CO BR CAP MON	RLA014F 092	
2		SET 1/2" P / CHC BR CAP	RLA014F 124	
3		FD CHC BR CAP MON	RLA014F 092	
4		SET 1/2" P / CHC BR CAP	RLA014F 126	
5	1/4 COR	FD LA CO BR CAP MON	RLA014F 092	N 387262.87 E 237,004.64

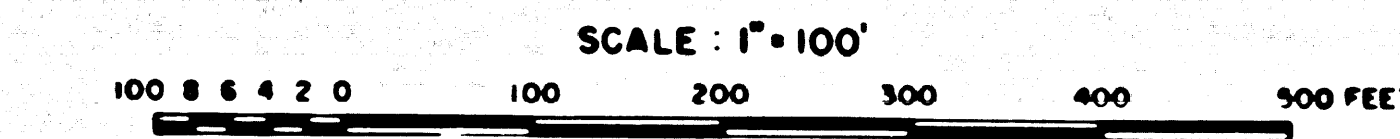
- LEGEND
- ⊙ SURVEY CONTROL POINTS
 - MONUMENTS SET OR FOUND, ALSO B C'S AND E C'S
 - △ ANGLE POINTS
 - ◇ SECTION CORNERS, RANCHO CORNERS
 - ⊕ RECORDED VALUE AS ESTABLISHED PREVIOUSLY
 - [] VALUE ESTABLISHED BY DISTRICT OF RIGHT OF WAY BRANCH

- NOTE
1. BEARINGS ARE BASED ON THE CALIFORNIA COORDINATE SYSTEM, DIVISION 8, SECTION 8808 OF THE 1953 PUBLIC RESOURCES CODE
 2. DEPARTMENT OF TRANSPORTATION SURVEY INFORMATION IS AVAILABLE FROM THE SURVEY SECTION OF THE ENGINEERING SERVICES BRANCH, LOS ANGELES, CALIFORNIA
 3. DEPARTMENT OF TRANSPORTATION RIGHT OF WAY INFORMATION IS AVAILABLE FROM THE RIGHT OF WAY BRANCH, LOS ANGELES, CALIFORNIA
 4. STATIONING SHOWN ON THIS MAP IS FOR REFERENCE ONLY.

IN LOS ANGELES COUNTY
BLK. 3823 MOD. 75

TO OBTAIN GROUND LEVEL DISTANCES, APPLY GRID FACTOR 0.9992292
GRID WAS ESTABLISHED FROM LOS ANGELES COUNTY CONTROL POINTS
PER 1954 ADJUSTMENT AS SHOWN BY POINT 5.

CONSTRUCTION CONTRACT NO. 07-504-036024 COMPLETION DATE: 9-3-68



LOS ANGELES COUNTY FILE NO.

STATE OF CALIFORNIA - DEPARTMENT OF TRANSPORTATION - SURVEYS

DISTRICT	COUNTY	ROUTE	POST MILES - TOTAL PROJECT	SHEET NO.	TOTAL SHEETS	Chief of Party	Office Supervisor
07	LA	14	66.0 - 77.0	6	12	T. THOMPSON	DON EBERLY

MONUMENTATION MAP

MAP NO. LA14M72.5

CALIFORNIA COORDINATE SYSTEM - ZONE 7

Surveyed by: _____ Date: _____

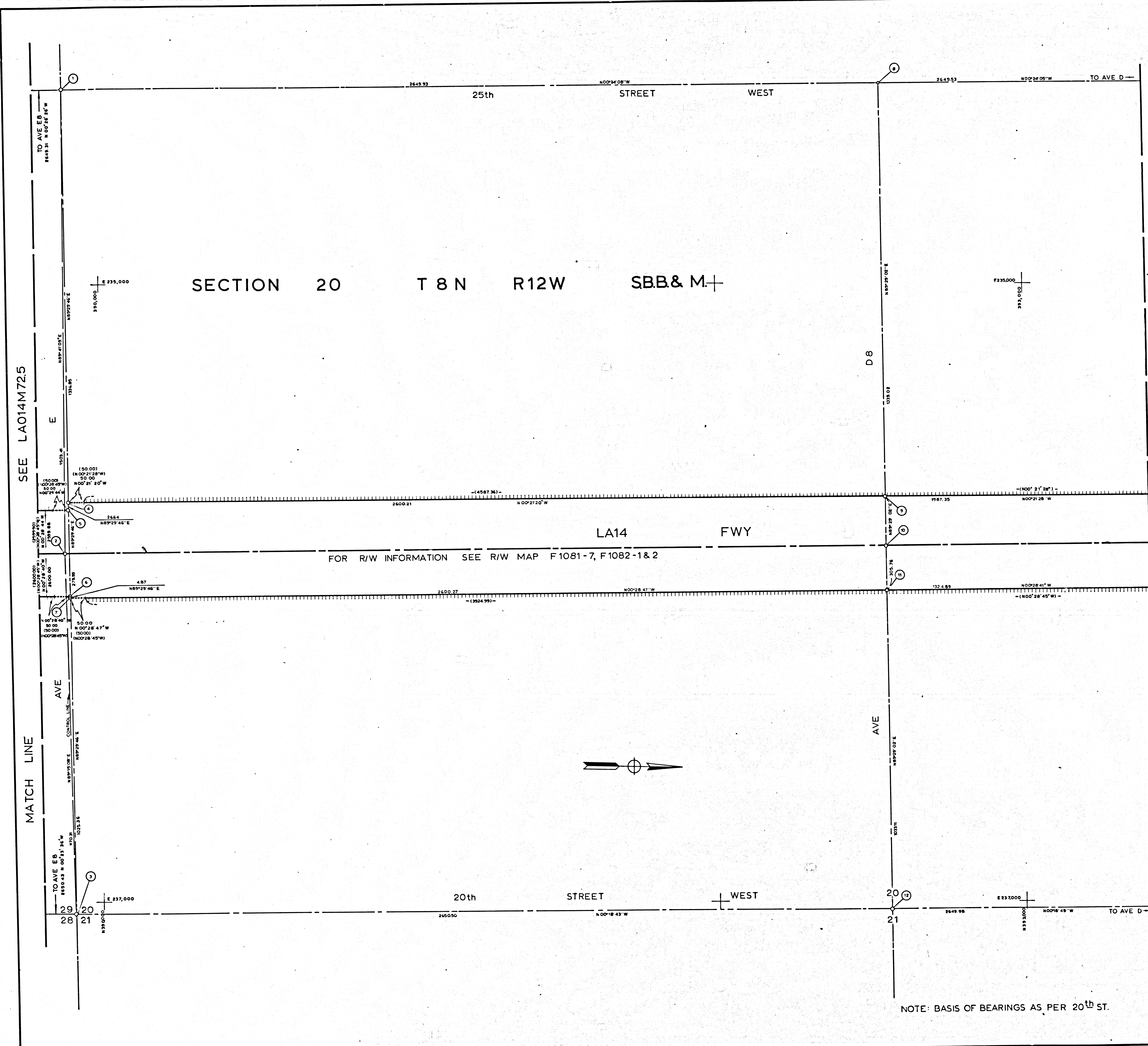
Checked by: F. CARTER

Project Engineer: _____

Demarcated by: H. HUGGINS & S. CURRIE

DATE: _____

FM 21084-2



NO	NAME	DESCRIPTION	REFERENCE	REMARKS
1	1/4 COR	PD LA CO BR CAP MON	RLA014F 95, 95	
2		PD L & T ON BRIDGE DECK	" "	
3	SEC COR	PD LA CO BR CAP MON	" "	N 389,913.84 E 237,026.45
4		SET 50 SPK & W	RLA014F 127	
5		SET 50 SPK & W	" "	
6		SET 50 SPK & W	" "	
7		SET SPK & W	" "	
8	CTR SEC	FD 11/2" IP/ CONC & W	RLA014F 95	
9		SET 1 1/2" IP/ CMC BR CAP	RLA014F 128	
10		PD CMC BR CAP	RLA014F 95	
11		SET 1 1/2" IP/ CMC BR CAP	RLA014F 129	
12	1/4 COR	PD LA CO SURV MON	RLA014F 95	N 359,563.70 E 237,022.02

LEGEND

- ⊙ — SURVEY CONTROL POINTS
- — MONUMENTS SET OR FOUND, ALSO B C'S AND E C'S
- △ — ANGLE POINTS
- ◇ — SECTION CORNERS, RANCHO CORNERS
- # — RECORDED VALUE AS ESTABLISHED PREVIOUSLY
- () — VALUE ESTABLISHED BY DISTRICT OF RIGHT OF WAY BRANCH

NOTE:

- BEARINGS ARE BASED ON THE CALIFORNIA COORDINATE SYSTEM, DIVISION 8, SECTION 8609 OF THE 1953 PUBLIC RESOURCES CODE.
- DEPARTMENT OF TRANSPORTATION SURVEY INFORMATION IS AVAILABLE FROM THE SURVEY SECTION OF THE ENGINEERING SERVICES BRANCH, LOS ANGELES, CALIFORNIA.
- DEPARTMENT OF TRANSPORTATION RIGHT OF WAY INFORMATION IS AVAILABLE FROM THE RIGHT OF WAY BRANCH, LOS ANGELES, CALIFORNIA.
- STATIONING SHOWN ON THIS MAP IS FOR REFERENCE ONLY.

IN LOS ANGELES COUNTY
 BLK. 3923 MOD. 25

TO OBTAIN GROUND LEVEL DISTANCE APPLY GRID FACTOR 0.99992222
 GRID WAS ESTABLISHED FROM LOS ANGELES COUNTY CONTROL POINTS
 PER 1964 ADJUSTMENT AS SHOWN BY POINTS 3 & 12

CONSTRUCTION CONTRACT NO. 07-504 036024 COMPLETION DATE: 9-3-68

SCALE: 1" = 100'
 100 200 300 400 500 FEET

LOS ANGELES COUNTY FILE NO.

STATE OF CALIFORNIA - DEPARTMENT OF TRANSPORTATION - SURVEYS			
DISTRICT	COUNTY	ROUTE	POST MILES - TOTAL PROJECT
07	LA	14	56.0 - 77.0

Chief of Party: T. THOMPSON
 Office Supervisor: DON EBELLY
 Checked by: S. CURRIE
 Project Engineer: F. CARTER
 Monumentation by: H. HUGHES & S. CURRIE
 Date: _____

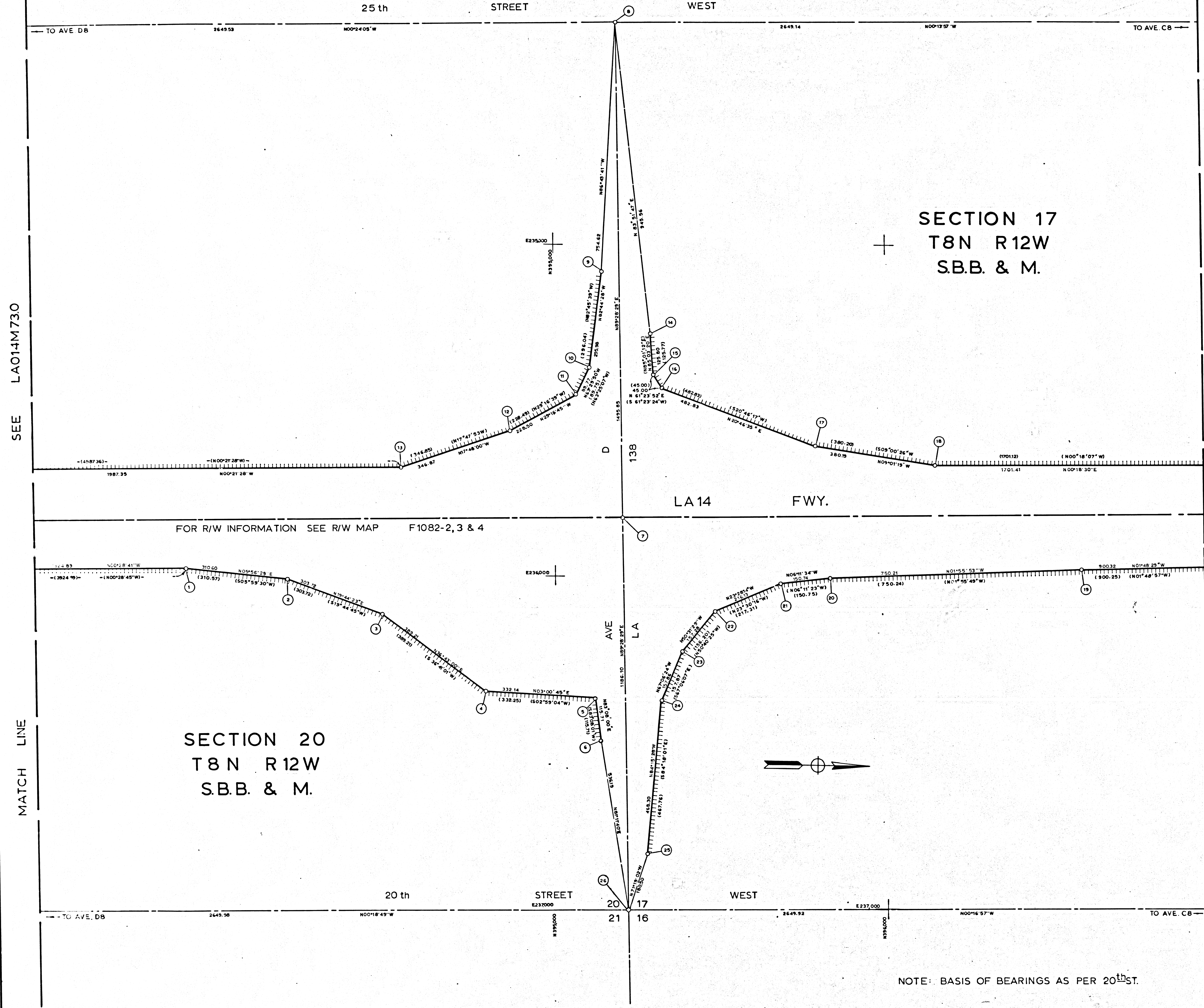
MAP NO. LA 14M 73.0
 CALIFORNIA COORDINATE SYSTEM - ZONE 7

NOTE: BASIS OF BEARINGS AS PER 20th ST.

F.M. 21084-3

SEE LA014M730

MATCH LINE



SECTION 17
T8N R12W
S.B.B. & M.

SECTION 20
T8N R12W
S.B.B. & M.

NOTE: BASIS OF BEARINGS AS PER 20th ST.

NO	NAME	DESCRIPTION	REFERENCE	REMARKS
1		SET 3/4" IP/ PLASTIC PLUG	RLA014F 129	
2		"	"	
3		"	"	
4		SET 3/4" IP/ PLASTIC PLUG	RLA014F 130	
5		"	"	
6		"	"	
7		FD L & T ON BRIDGE	RLA014F 95	
8	1/4 COR.	FD LA CO SURV MON	RLA014F 95	
9		SET 1/2" IP/CHC BR CAP	RLA014F 128	
10		SET 3/4" IP/ PLASTIC PLUG	RLA014F 128	
11		"	"	
12		"	"	
13		"	"	
14		SET 3/4" IP/ PLASTIC PLUG	RLA014F 131	
15		"	"	
16		"	"	
17		"	"	
18		"	"	
19		SET 3/4" IP/ PLASTIC PLUG	RLA014F 133	
20		"	"	
21		"	RLA014F 132	
22		"	"	
23		"	"	
24		"	"	
25		"	"	
26	SEC. COR.	FD LA CO MON	RLA014F 95	N 335,213.64 E 237,007.52

SEE LA014M74.5

MATCH LINE

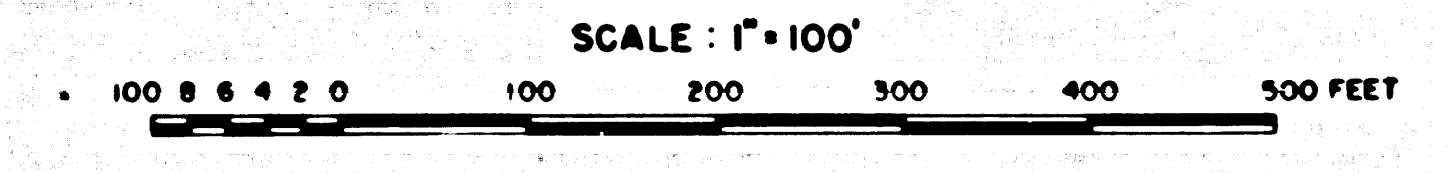
- LEGEND
- ⊙ SURVEY CONTROL POINTS
 - MONUMENTS SET OR FOUND, ALSO B'S AND E'S
 - △ ANGLE POINTS
 - SECTION CORNERS, RANCHO CORNERS
 - ⊞ RECORDED VALUE AS ESTABLISHED PREVIOUSLY
 - () VALUE ESTABLISHED BY DISTRICT OF RIGHT OF WAY BRANCH

- NOTE:
- BEARINGS ARE BASED ON THE CALIFORNIA COORDINATE SYSTEM, DIVISION 8, SECTION 8009 OF THE 1953 PUBLIC RESOURCES CODE.
 - DEPARTMENT OF TRANSPORTATION SURVEY INFORMATION IS AVAILABLE FROM THE SURVEY SECTION OF THE ENGINEERING SERVICES BRANCH, LOS ANGELES, CALIFORNIA.
 - DEPARTMENT OF TRANSPORTATION RIGHT OF WAY INFORMATION IS AVAILABLE FROM THE RIGHT OF WAY BRANCH, LOS ANGELES, CALIFORNIA.
 - STATIONING SHOWN ON THIS MAP IS FOR REFERENCE ONLY.

IN LOS ANGELES COUNTY
BLK. 3923 MOD. 55

TO OBTAIN GROUND LEVEL DISTANCES, APPLY GRID FACTOR 0.99992922
GRID WAS ESTABLISHED FROM LOS ANGELES COUNTY CONTROL POINTS
FOR 1984 ADJUSTMENT AS SHOWN BY POINT 26.

CONSTRUCTION CONTRACT NO. 07-504-036024 COMPLETION DATE: 9-3-68



LOS ANGELES COUNTY FILE NO.

DISTRICT	COUNTY	ROUTE	POST MILES - TOTAL PROJECT	PROJECT NO.	TOTAL SHEETS	Sheet of Party	Offl. Supervisor
07	LA	14	6.9-0 77.0	8	12	T. THOMPSON	DOE EBERLY

MONUMENTATION MAP
MAP NO. LA 14/138

CALIFORNIA COORDINATE SYSTEM - ZONE 7

FM 21084-4