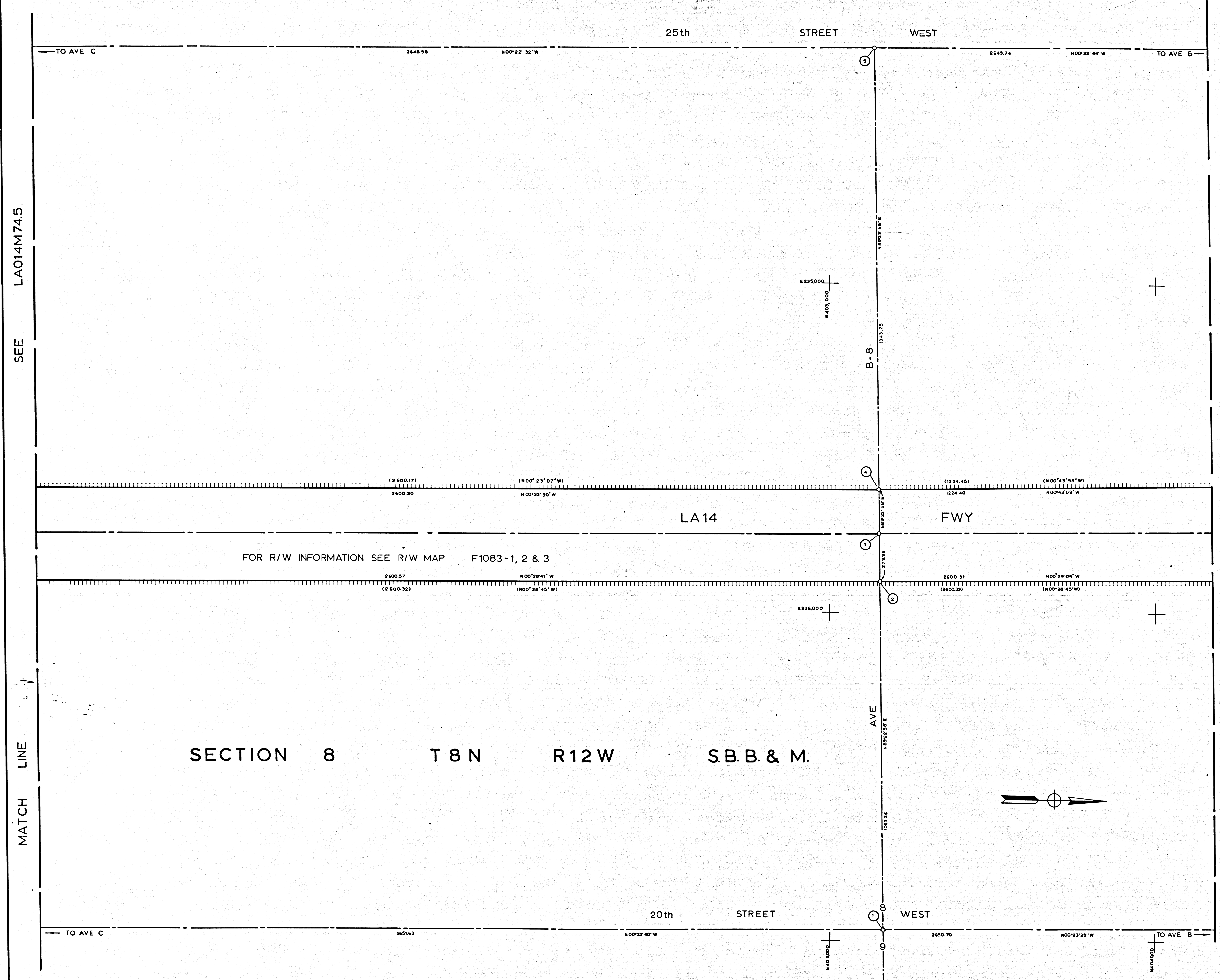


NO	NAME	DESCRIPTION	REFERENCE	REMARKS
1		SET 3/4" IP & PLASTIC PLUG	RLA014F - 133	
2	1/4 COR	FD LA CO SURV MON	RLA014B 004	N 37 16 C 3.53 E 236.934.45
3		SET 1 1/2" IP & CHC BR CAP	RLA014F - 133	
4		FD 2x2 & T	RLA014G 004	
5		SET 1 1/2" IP & CHC BR CAP	RLA014F - 131	
6		SET 2x2x20 O.K. BRASS TAG	RLA014G 004	
7	SEC COR	FD LA CO SURV MON	RLA014G 004 RLA014F 134	N 400 513.35 E 236.981.22
8		SET 50 SPK & W	RLA014F 134	
9		FD L & T ON BRIDGE	RLA014G 004	
10		SET 50 SPK & W	RLA014F 134	
11	1/4 COR	FD LA CO MON	RLA014G 004	



NO	NAME	DESCRIPTION	REFERENCE	REMARKS
1	1/4 COR.	FD LA CO MON	RLA014G 007	N 403.164 92 E 236.563 74
2		SET 1 1/2" IP	RLA014F 134	
3		FD CHC BR CAP MON	RLA014G 007	
4		SET 1 1/2" P	RLA014F 134	
5	CTR. SECT.	FD LA CO MON	RLA014G 007	

LEGEND

- SURVEY CONTROL POINTS
- MONUMENTS SET OR FOUND, ALSO B'C'S AND E'C'S
- ANGLE POINTS
- SECTION CORNERS, RANCHO CORNERS
- RECORDED VALUE AS ESTABLISHED PREVIOUSLY
- VALUE ESTABLISHED BY DISTRICT OF RIGHT OF WAY BRANCH

NOTE:

1. BEARINGS ARE BASED ON THE CALIFORNIA COORDINATE SYSTEM, DIVISION 8, SECTION 8809 OF THE 1953 PUBLIC RESOURCES CODE.
2. DEPARTMENT OF TRANSPORTATION SURVEY INFORMATION IS AVAILABLE FROM THE SURVEY SECTION OF THE ENGINEERING SERVICES BRANCH, LOS ANGELES, CALIFORNIA.
3. DEPARTMENT OF TRANSPORTATION RIGHT OF WAY INFORMATION IS AVAILABLE FROM THE RIGHT OF WAY BRANCH, LOS ANGELES, CALIFORNIA.
4. STATIONING SHOWN ON THIS MAP IS FOR REFERENCE ONLY.

IN LOS ANGELES COUNTY
 BLK. 4023 MOD. 35

TO OBTAIN GROUND LEVEL DISTANCES APPLY GRID FACTOR 0.99992552
 GRID WAS ESTABLISHED FROM LOS ANGELES COUNTY CONTROL POINTS
 PER 1964 ADJUSTMENT AS SHOWN BY POINT 1

CONSTRUCTION CONTRACT NO. 07.504036024 COMPLETION DATE: 9-3-68

SCALE: 1" = 100'

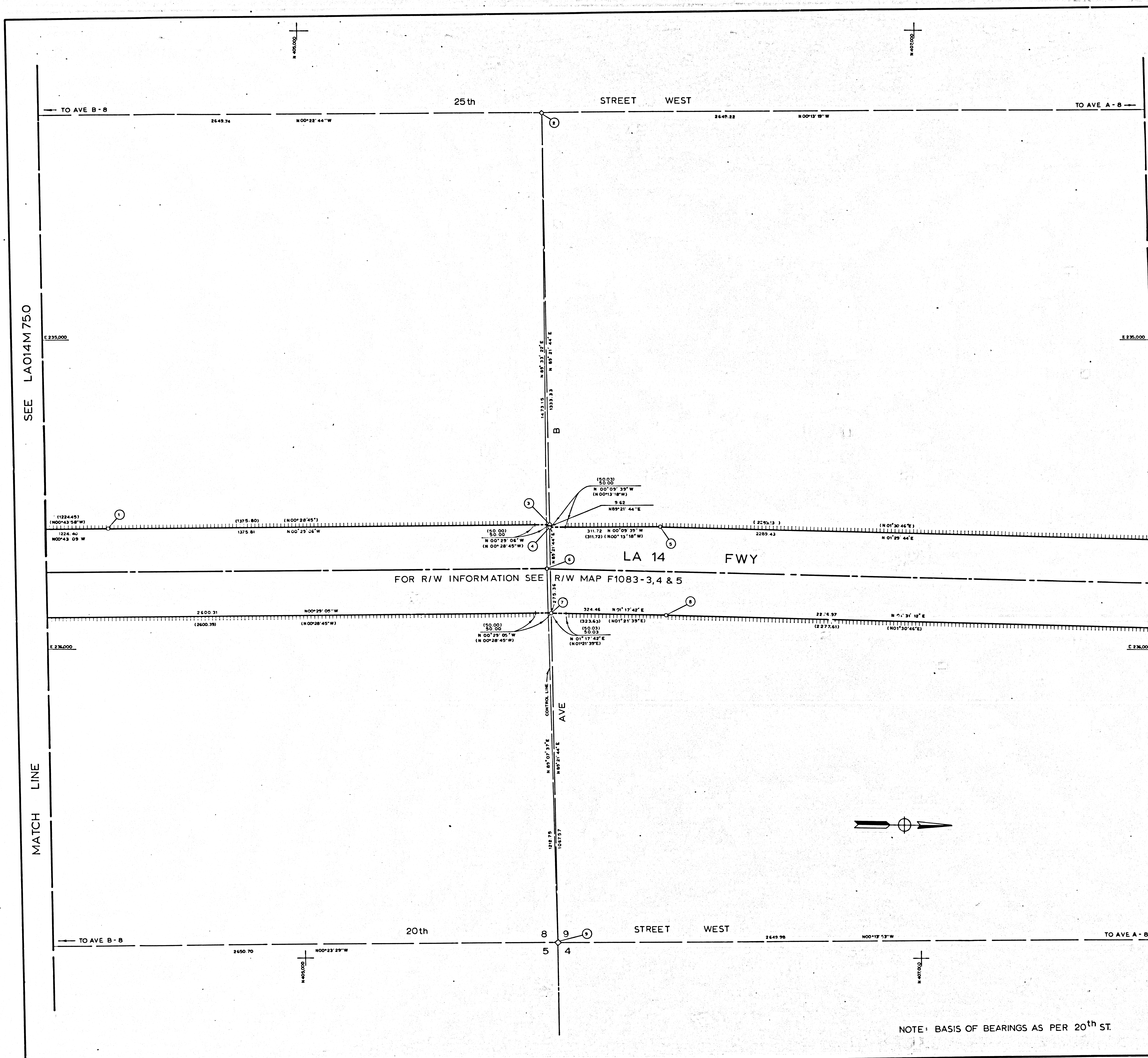
100 200 300 400 500 FEET

LOS ANGELES COUNTY FILE NO.

STATE OF CALIFORNIA - DEPARTMENT OF TRANSPORTATION - SURVEYS							
DISTRICT	COUNTY	ROUTE	POST MILES - TOTAL PROJECT	SHEET NO.	TOTAL SHEETS	Chief of Party	Office Supervisor
07	LA	14	6.50 / 7.70	10	12	T. THOMPSON	DOH EBERLY
				Checked by		Checked by	
				S. CURRIE		F. CARTER	
				Project Engineer		Approved by	
				S. CURRIE		H. MCCOY & S. CURRIE	
CALIFORNIA COORDINATE SYSTEM - ZONE 7							
Drawn by		Date		Date		Date	

NOTE: BASIS OF BEARINGS AS PER 20th ST.

FM. 21085-2



NO	NAME	DESCRIPTION	REFERENCE	REMARKS
1		SET 3/4" P	RLA0146 134	
2	1/4 COR	FD LA CO MON	RLA0146 007	
3		SET 50 SPK&W	RLA0146 134	
4		"	"	
5		SET PM TOP FENCE POST	"	
6		FD LAT W BRIDGE DECK	RLA0146 007	
7		SET 50 SPK&W	RLA0146 134	
8		SET 3/4" P/PLASTIC PLUG	"	
9	SEC COR	FD LA CO MON	RLA0146 007	N 405,815.56 E 235,345.63

NO	NAME	DESCRIPTION	REFERENCE	REMARKS
1				
2				
3				
4				
5				
6				
7				
8				
9				

LEGEND

- ⊙ SURVEY CONTROL POINTS
- MONUMENTS SET OR FOUND, ALSO B.C.'S AND E.C.'S
- △ ANGLE POINTS
- ◇ SECTION CORNERS, RANCHO CORNERS
- ⊠ RECORDED VALUE AS ESTABLISHED PREVIOUSLY
- () VALUE ESTABLISHED BY DISTRICT OF RIGHT OF WAY BRANCH

NOTE:

- BEARINGS ARE BASED ON THE CALIFORNIA COORDINATE SYSTEM, DIVISION 8, SECTION 8809 OF THE 1953 PUBLIC RESOURCES CODE.
- DEPARTMENT OF TRANSPORTATION SURVEY INFORMATION IS AVAILABLE FROM THE SURVEY SECTION OF THE ENGINEERING SERVICES BRANCH, LOS ANGELES, CALIFORNIA.
- DEPARTMENT OF TRANSPORTATION RIGHT OF WAY INFORMATION IS AVAILABLE FROM THE RIGHT OF WAY BRANCH, LOS ANGELES, CALIFORNIA.
- STATIONING SHOWN ON THIS MAP IS FOR REFERENCE ONLY.

IN LOS ANGELES COUNTY
 BLK. 4023 MOD. 55

TO OBTAIN GROUND LEVEL DISTANCES, APPLY GRID FACTOR 0.99992292
 GRID WAS ESTABLISHED FROM LOS ANGELES COUNTY CONTROL POINTS
 PER 1964 ADJUSTMENT AS SHOWN BY POINT 9

CONSTRUCTION CONTRACT NO. 07-504 036024 COMPLETION DATE: 9-3-68

SCALE: 1" = 100'

100 200 300 400 500 FEET

LOS ANGELES COUNTY FILE NO.

STATE OF CALIFORNIA - DEPARTMENT OF TRANSPORTATION - SURVEYS

DISTRICT	COUNTY	ROUTE	POST MILES - TOTAL PROJECT	SHEET NO.	TOTAL SHEETS	Chief of Party	Office Supervisor
07	LA	14	69.0177.0	11	12	Y THOMPSON	DOM EBERLY

MONUMENTATION MAP

MAP NO. LA 14 M 76.0

Checked by: S CURRIE
 Project Engineer: S CURRIE
 Checked by: K CARTER
 Drawn by: S HUGGINS & S CURRIE

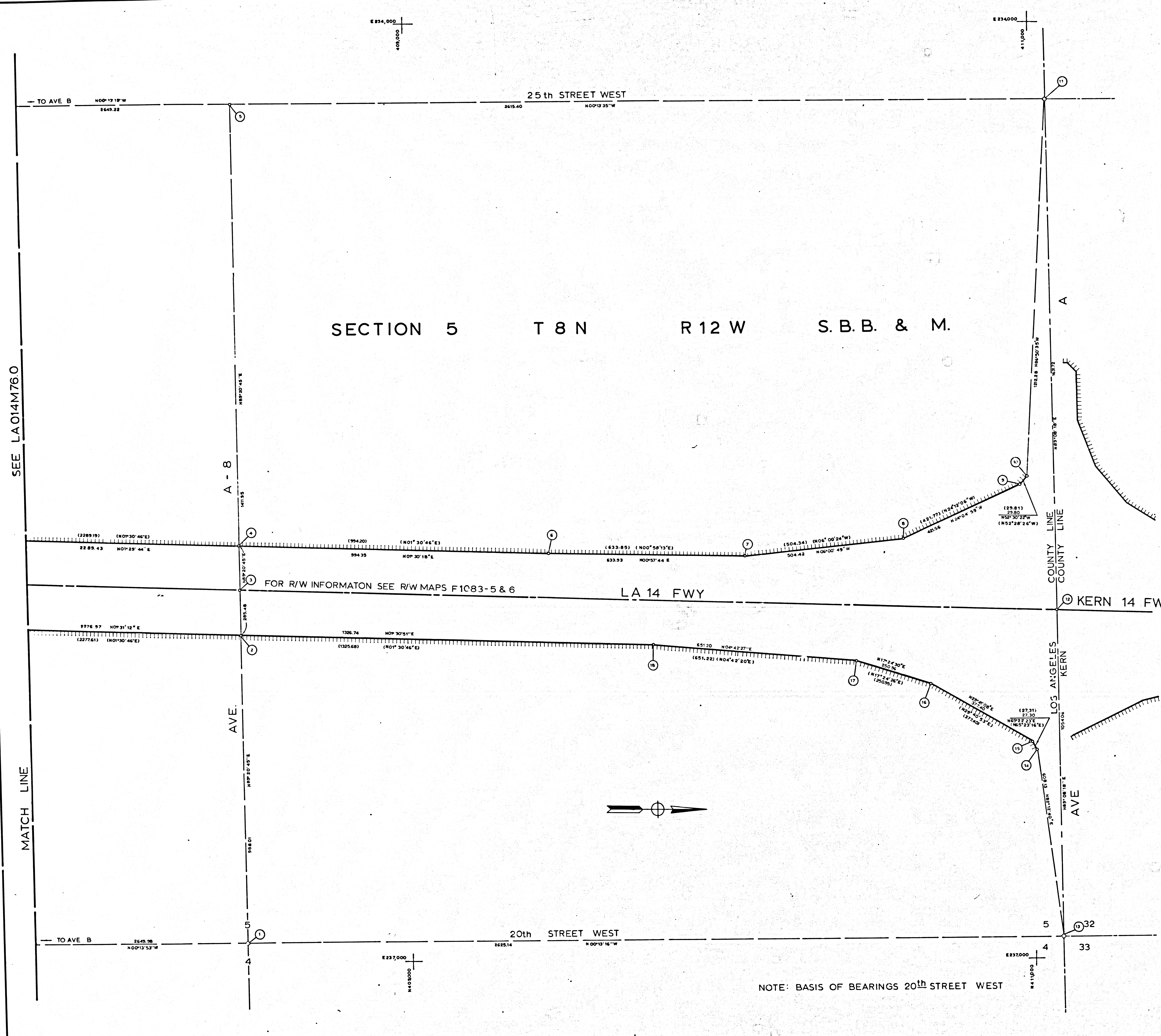
CALIFORNIA COORDINATE SYSTEM - ZONE 7

DATE: _____

NOTE: BASIS OF BEARINGS AS PER 20th ST.

FM 21085-3

NO	NAME	DESCRIPTION	REFERENCE	REMARKS
1	1/4 COR	FD LA CO SUR MON	RLA0146 008	N 408,465.52 E 236,924.93
2		SET 1 1/2" IP & CHC BR CAP	RLA014F 136	
3		SET 2x2x8 T	RLA014G 008	
4		SET 1 1/2" IP/CHC BR CAP	RLA014F 135	
5		SET 2x2x8 BR TAG	RLA014G 008	
6		SET 3/4" IP/PLASTIC PLUG	RLA014F 135	
7		"	"	
8		"	"	
9		"	"	
10		"	"	
11	1/4 COR	FD LA CO BR CAP MON	RLA014G 008	
12		FD L&T	"	
13	SEC COR	FD LA CO BR CAP MON	"	N 411,090.64 E 236,924.80
14		SET 3/4" IP/PLASTIC PLUG	RLA014F 136	
15		"	"	
16		"	"	
17		"	"	
18		"	"	



LEGEND

- ⊙ SURVEY CONTROL POINTS
- MONUMENTS SET OR FOUND, ALSO B'S AND E'S
- △ ANGLE POINTS
- ◇ SECTION CORNERS, RANCHO CORNERS
- ⊞ RECORDED VALUE AS ESTABLISHED PREVIOUSLY
- () VALUE ESTABLISHED BY DISTRICT OF RIGHT OF WAY BRANCH

NOTE

- BEARINGS ARE BASED ON THE CALIFORNIA COORDINATE SYSTEM, DIVISION 8, SECTION 8009 OF THE 1953 PUBLIC RESOURCES CODE.
- DEPARTMENT OF TRANSPORTATION SURVEY INFORMATION IS AVAILABLE FROM THE SURVEY SECTION OF THE ENGINEERING SERVICES BRANCH, LOS ANGELES, CALIFORNIA.
- DEPARTMENT OF TRANSPORTATION RIGHT OF WAY INFORMATION IS AVAILABLE FROM THE RIGHT OF WAY BRANCH, LOS ANGELES, CALIFORNIA.
- STATIONING SHOWN ON THIS MAP IS FOR REFERENCE ONLY.

IN LOS ANGELES COUNTY
 BLK. 4023 MOD. 95

TO OBTAIN GROUND LEVEL DISTANCES, APPLY GRID FACTOR 0.99992292
 GRID WAS ESTABLISHED FROM LOS ANGELES COUNTY CONTROL POINTS
 PER 1964 ADJUSTMENT AS SHOWN BY POINTS 1 & 13

CONSTRUCTION CONTRACT NO. 07-504.036024 COMPLETION DATE: 9-3-68
 SCALE: 1" = 100'
 100 200 300 400 500 FEET

LOS ANGELES COUNTY FILE NO.

DISTRICT	COUNTY	ROUTE	POST MILES - TOTAL PROJECT	SHEET NO.	TOTAL SHEETS	Chief of Party	Office Supervisor
07	LA	14	69.0-77.0	12	12	T. THOMPSON	DON EMBURY

MONUMENTATION MAP

MAP NO. LA 14M76.5

CALIFORNIA COORDINATE SYSTEM - ZONE 7

NOTE: BASIS OF BEARINGS 20th STREET WEST

F.M. 21085-4