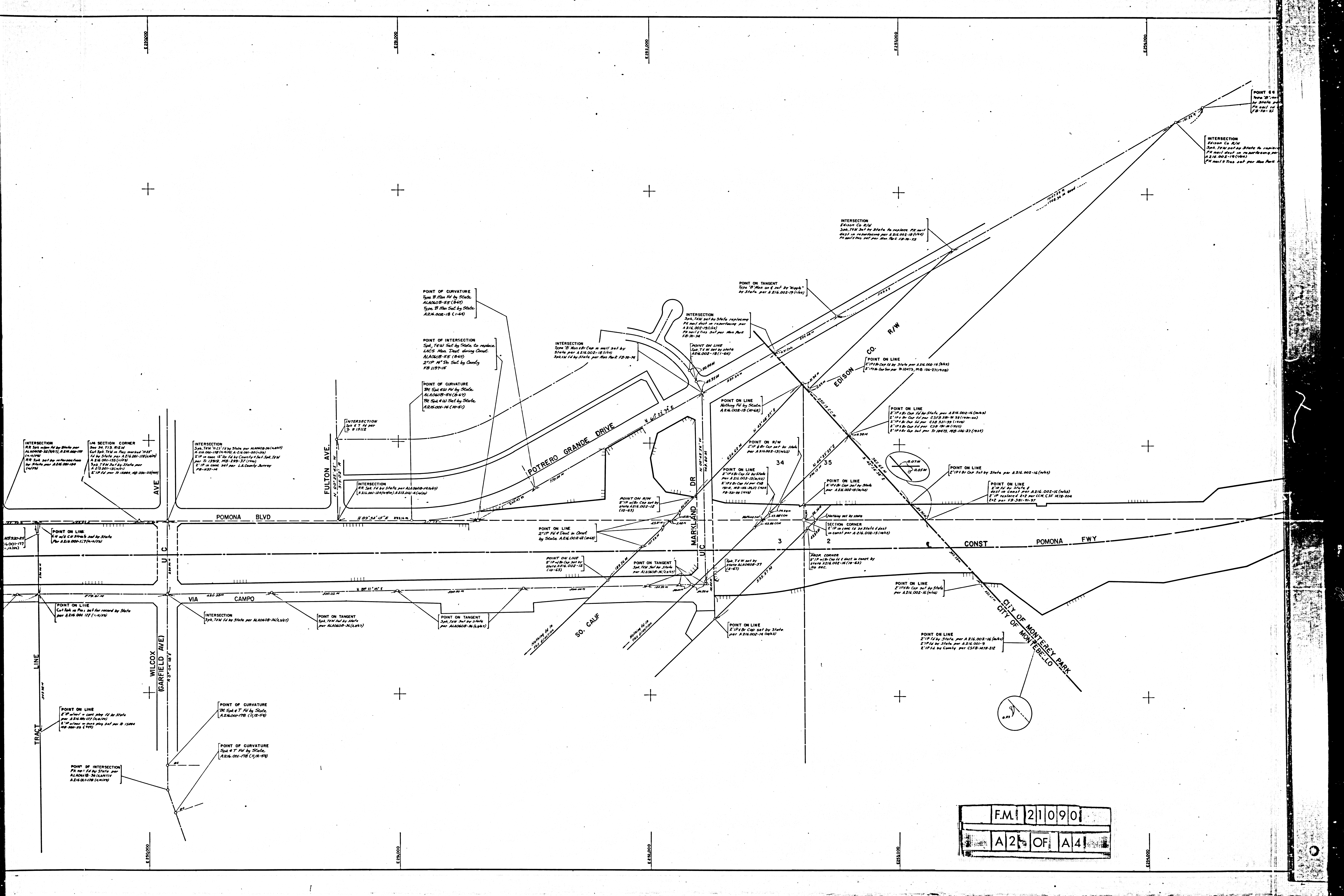


SEE MM 4016-1

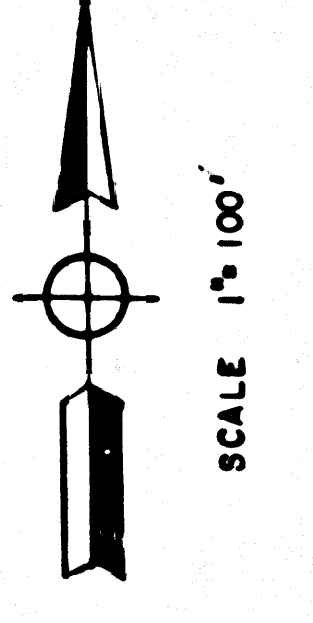
F.M. 21090  
A1 OF A4



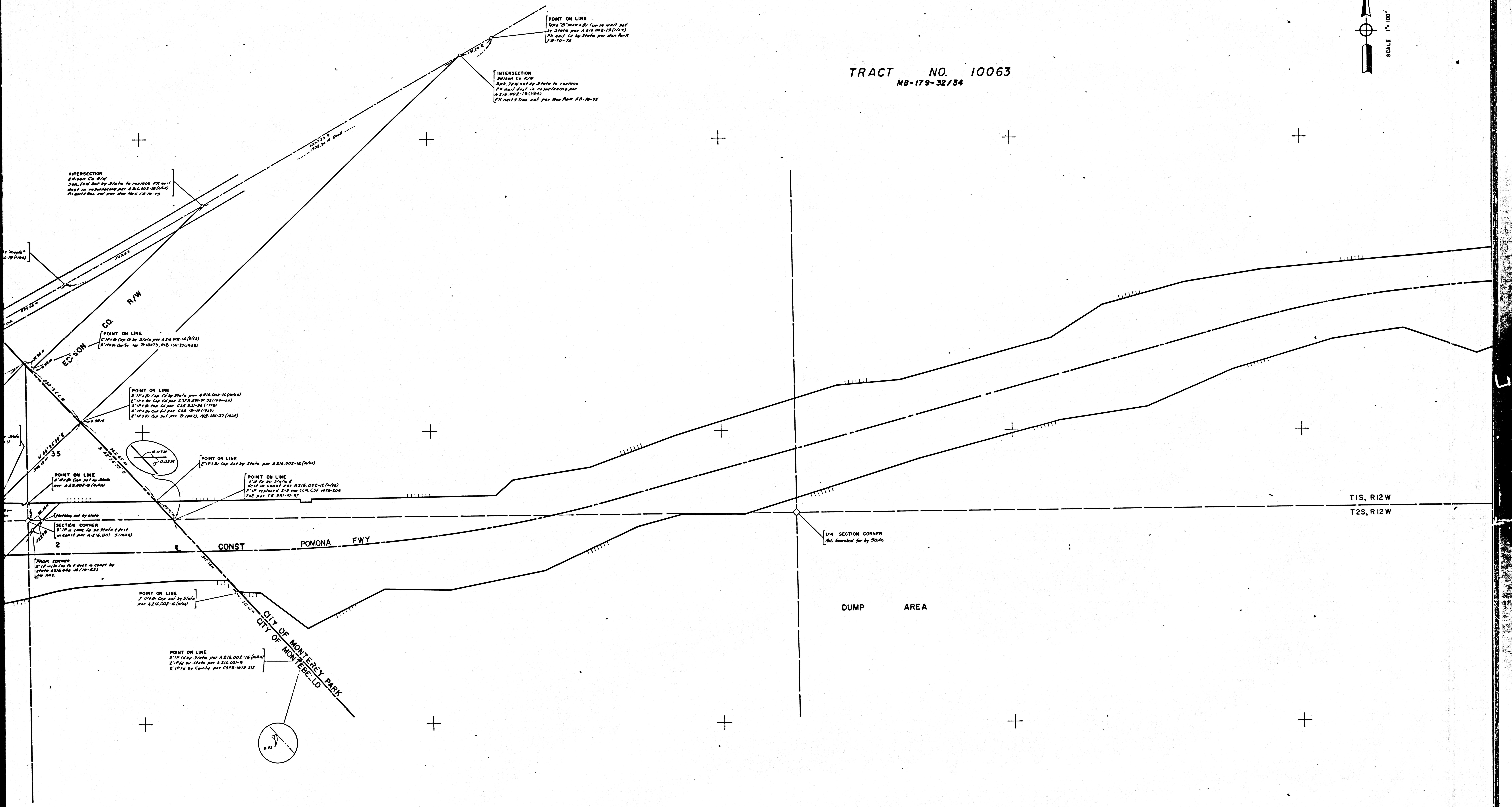


F.M. 21090  
 A2 OF A4





TRACT NO. 10063  
MB-179-32/34

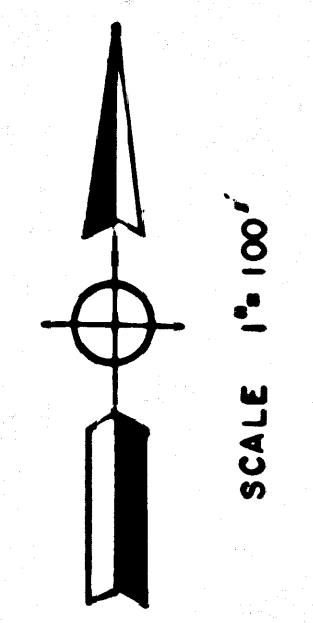


T1S, R12W  
T2S, R12W

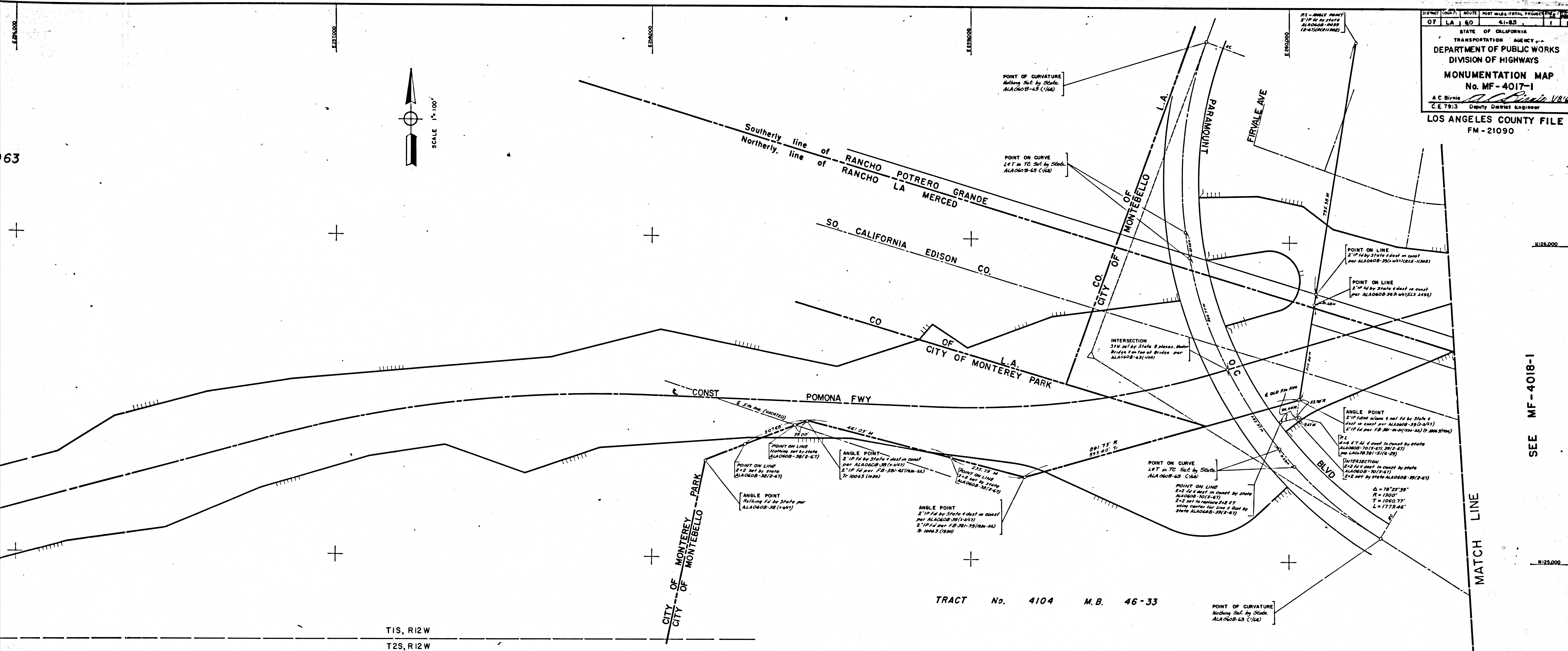
F.M. 21090  
A3 OF A4



STATE OF CALIFORNIA  
 TRANSPORTATION AGENCY  
 DEPARTMENT OF PUBLIC WORKS  
 DIVISION OF HIGHWAYS  
**MONUMENTATION MAP**  
 No. MF-4017-1  
 C.E. Birnie  
 C.E. 7913 Deputy District Engineer  
 LOS ANGELES COUNTY FILE  
 FM-21090



63



TRACT No. 4104 M.B. 46-33

T1S, R12W  
 T2S, R12W

IN LOS ANGELES COUNTY BETWEEN FINDLAY  
 AVENUE AND ARROYO DR.  
 LA-60 P.M. 4.1 TO 8.5  
 Construction Contract 07-033144  
 Completed 5-24-67

References - Notes:  
 County Surveyor's Field Books:  
 CSFB 321-58, 99, 102-105; CSFB 381-39, 44-51, 91, 97, 98;  
 CSFB 147B-204; CSB 191-10, 11.  
 City Field Books: FB 70-72-75 (MONTEREY PARK)  
 Tract Maps: 10034-MB146/51-57, 10063-MB179/32-34, 10473-MB156/26, 27,  
 13919-MB 299/37, 15884-MB 350/25  
 Division of Highways Field Books:  
 A215.001-4, 9, 11, 14  
 A216.001-3, 9, 12, 14, 152-154, 172-178  
 A216.002-12-18  
 ALA0608-35, 38, 43, 50-55, 63  
 1. Bearings are taken from CCM S 215.8, 215.9 and 216.1 and are based on the California Coordinate System, Zone VII, Section 8809 of the Public Resources Code.  
 2. Division of Highways survey information is available from the Engineering Services Department located at 550 South Vermont Ave., Los Angeles, California.  
 3. Division of Highways Right-of-Way information is available from the Right-of-Way Department located at 120 South Spring St., Los Angeles, California.

SEE MF-4018-1

MATCH LINE

F.M. 21090  
 A 4 OF A 4

Chief of Party	Date
ED YOUNG	
Dr. Designer	
E.E. STAHL	R.J. BARRY
Map Supervisor	
P.J. CHRETIEN	R.J. BARRY
Project Engineer	
M. THOMAS	
District Survey Engineer	
F.A. MAAS	
Approved recommended by	
Assistant District Engineer	
K.E. MCKEAN	