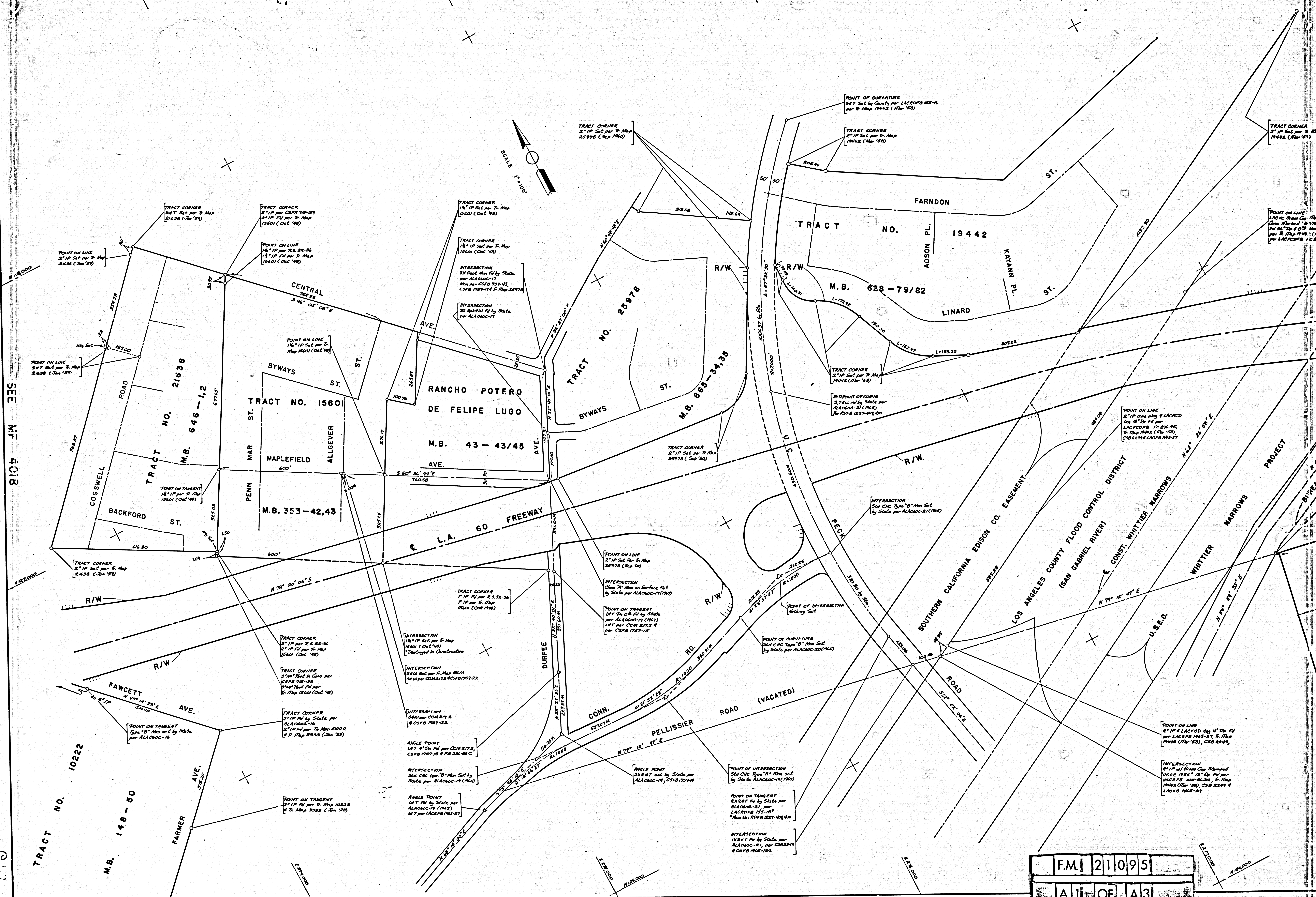
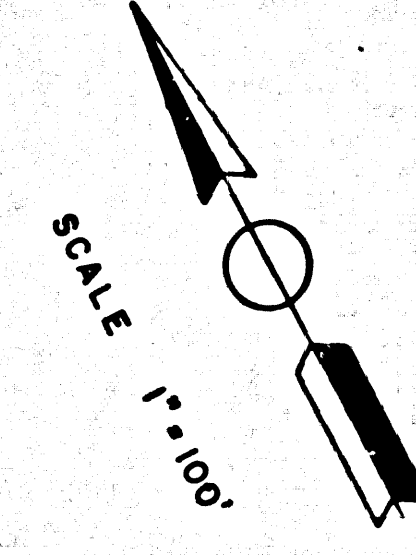


SEE MAP 4018



F.M. 21095
A1 OF A3

TRACT CORNER
2" IP Set per F. Map
21638 (Jan '59)

TRACT CORNER
1/4" IP per CSFB 718-159
2" IP Fd per F. Map
15601 (Oct '48)

TRACT CORNER
1/4" IP Set per F. Map
15601 (Oct '48)

TRACT CORNER
2" IP Set per F. Map
25978 (Sep '60)

POINT OF CURVATURE
Set by County per LACDFB 185-14
per F. Map 19442 (Mar '58)

TRACT CORNER
2" IP Set per F. Map
19442 (Mar '58)

POINT ON LINE
LACDFB Brown Clay Plan in
"Chain of Title" 18718-55
Fol 56, 57 of OS
per F. Map 19442 (Mar '58)
per LACDFB 185-182

POINT ON LINE
2" IP Set per F. Map
21638 (Jan '59)

POINT ON LINE
1/4" IP Set per F. Map
15601 (Oct '48)

TRACT CORNER
1/4" IP Set per F. Map
15601 (Oct '48)

TRACT CORNER
1/4" IP Set per F. Map
15601 (Oct '48)

TRACT CORNER
2" IP Set per F. Map
19442 (Mar '58)

POINT ON LINE
LACDFB Brown Clay Plan in
"Chain of Title" 18718-55
Fol 56, 57 of OS
per F. Map 19442 (Mar '58)
per LACDFB 185-182

POINT ON LINE
2" IP Set per F. Map
21638 (Jan '59)

POINT ON LINE
1/4" IP Set per F. Map
15601 (Oct '48)

TRACT CORNER
1/4" IP Set per F. Map
15601 (Oct '48)

TRACT CORNER
1/4" IP Set per F. Map
15601 (Oct '48)

TRACT CORNER
2" IP Set per F. Map
19442 (Mar '58)

POINT ON LINE
LACDFB Brown Clay Plan in
"Chain of Title" 18718-55
Fol 56, 57 of OS
per F. Map 19442 (Mar '58)
per LACDFB 185-182

POINT ON TANGENT
Type 18" Man set by State
per ALA060-16

TRACT CORNER
2" IP per F.S. 33-36
2" IP Fd per F. Map
15601 (Oct '48)

TRACT CORNER
1/4" IP Set per F. Map
15601 (Oct '48)

TRACT CORNER
1/4" IP Set per F. Map
15601 (Oct '48)

TRACT CORNER
2" IP Set per F. Map
19442 (Mar '58)

POINT ON LINE
2" IP 4" LACDFB by 4" Dn. Fd
per LACDFB 185-173, F. Map
19442 (Mar '58), CSB 2249, 4
LACDFB 185-182

TRACT CORNER
2" IP Set per F. Map
21638 (Jan '59)

TRACT CORNER
1/4" IP Set per F. Map
15601 (Oct '48)

TRACT CORNER
1/4" IP Set per F. Map
15601 (Oct '48)

TRACT CORNER
1/4" IP Set per F. Map
15601 (Oct '48)

TRACT CORNER
2" IP Set per F. Map
19442 (Mar '58)

POINT ON LINE
2" IP 4" LACDFB by 4" Dn. Fd
per LACDFB 185-173, F. Map
19442 (Mar '58), CSB 2249, 4
LACDFB 185-182

TRACT CORNER
2" IP Set per F. Map
21638 (Jan '59)

TRACT CORNER
1/4" IP Set per F. Map
15601 (Oct '48)

TRACT CORNER
1/4" IP Set per F. Map
15601 (Oct '48)

TRACT CORNER
1/4" IP Set per F. Map
15601 (Oct '48)

TRACT CORNER
2" IP Set per F. Map
19442 (Mar '58)

POINT ON LINE
2" IP 4" LACDFB by 4" Dn. Fd
per LACDFB 185-173, F. Map
19442 (Mar '58), CSB 2249, 4
LACDFB 185-182

POINT ON TANGENT
Type 18" Man set by State
per ALA060-16

TRACT CORNER
2" IP per F.S. 33-36
2" IP Fd per F. Map
15601 (Oct '48)

TRACT CORNER
1/4" IP Set per F. Map
15601 (Oct '48)

TRACT CORNER
1/4" IP Set per F. Map
15601 (Oct '48)

TRACT CORNER
2" IP Set per F. Map
19442 (Mar '58)

POINT ON LINE
2" IP 4" LACDFB by 4" Dn. Fd
per LACDFB 185-173, F. Map
19442 (Mar '58), CSB 2249, 4
LACDFB 185-182

POINT ON TANGENT
Type 18" Man set by State
per ALA060-16

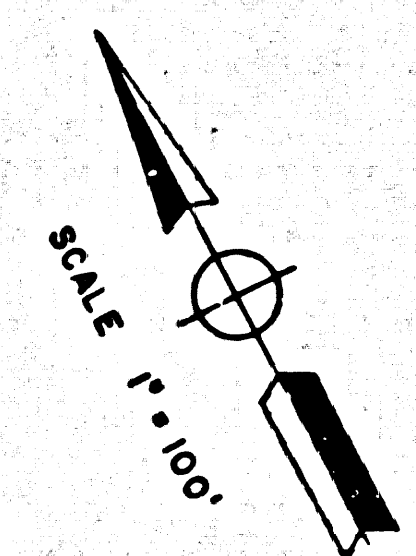
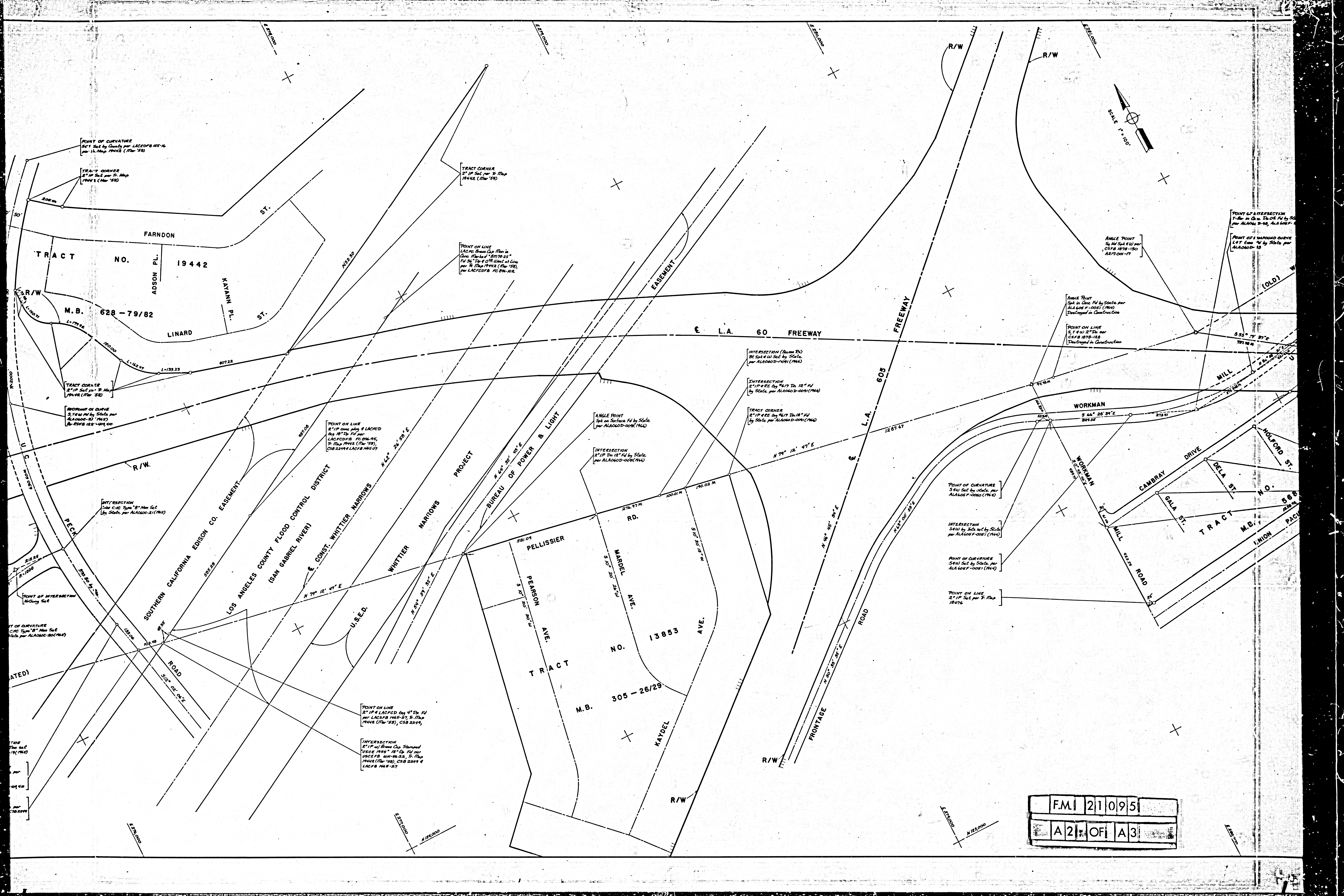
TRACT CORNER
2" IP per F.S. 33-36
2" IP Fd per F. Map
15601 (Oct '48)

TRACT CORNER
1/4" IP Set per F. Map
15601 (Oct '48)

TRACT CORNER
1/4" IP Set per F. Map
15601 (Oct '48)

TRACT CORNER
2" IP Set per F. Map
19442 (Mar '58)

POINT ON LINE
2" IP 4" LACDFB by 4" Dn. Fd
per LACDFB 185-173, F. Map
19442 (Mar '58), CSB 2249, 4
LACDFB 185-182



SCALE 1" = 100'

F.M.	21095
A 2	OF A 3

POINT OF CURVATURE
Set by Chain per LACDFB 185-14
per 11 Map 1942 (1948)

TRACT CORNER
2" IP Set per 7 Map
1942 (1948)

TRACT CORNER
2" IP Set per 7 Map
1942 (1948)

POINT ON LINE
LACDFB Chain Cap. Map in
Chain. Method 1877-25
Per 36" Dip of Chain at Line
per 7 Map 1942 (1948)
per LACDFB FC 84-12

POINT OF INTERSECTION
7" IP in Chain. D.O.R. by State
per ALA60-001 (1944)

POINT OF INTERSECTION
1" IP in Chain. D.O.R. by State
per ALA60-001 (1944)

ANGLE POINT
Set in Chain. D.O.R. by State
per ALA60-001 (1944)
Discovered in Construction

ANGLE POINT
Set in Chain. D.O.R. by State
per ALA60-001 (1944)
Discovered in Construction

POINT ON LINE
Set by State per
LACDFB 1878-128
Discovered in Construction

INTERSECTION (Bureau of Power & Light)
Set by State per ALA60-001 (1944)

INTERSECTION
2" IP & RE by 1417 D.O.R. 12" FI
by State per ALA60-001 (1944)

TRACT CORNER
2" IP & RE by 1417 D.O.R. 12" FI
by State per ALA60-001 (1944)

ANGLE POINT
Set on Surface. FI by State
per ALA60-001 (1944)

INTERSECTION
2" IP D.O.R. 12" FI by State
per ALA60-001 (1944)

POINT ON LINE
2" IP Chain Cap. & LACDFB
by 1417 D.O.R. FI per
LACDFB FC 84-12
7 Map 1942 (1948)
CSB 2244 LACDFB 185-17

POINT OF CURVATURE
Set by State per
ALA60-001 (1944)

INTERSECTION
Set by State per
ALA60-001 (1944)

POINT OF CURVATURE
Set by State per
ALA60-001 (1944)

POINT ON LINE
2" IP Set per 7 Map
18476

POINT ON LINE
2" IP & LACDFB by 4" D.O.R. FI
per LACDFB 185-27, 7 Map
1942 (1948), CSB 2244

INTERSECTION
2" IP w/ Chain Cap. Stamped
USCE 1935 12" D.O.R. FI per
USCE FB 184-23, 7 Map
1942 (1948), CSB 2244 &
LACDFB 185-27

POINT OF CURVATURE
CIRC. Type 18" Man Set
per ALA60-001 (1944)

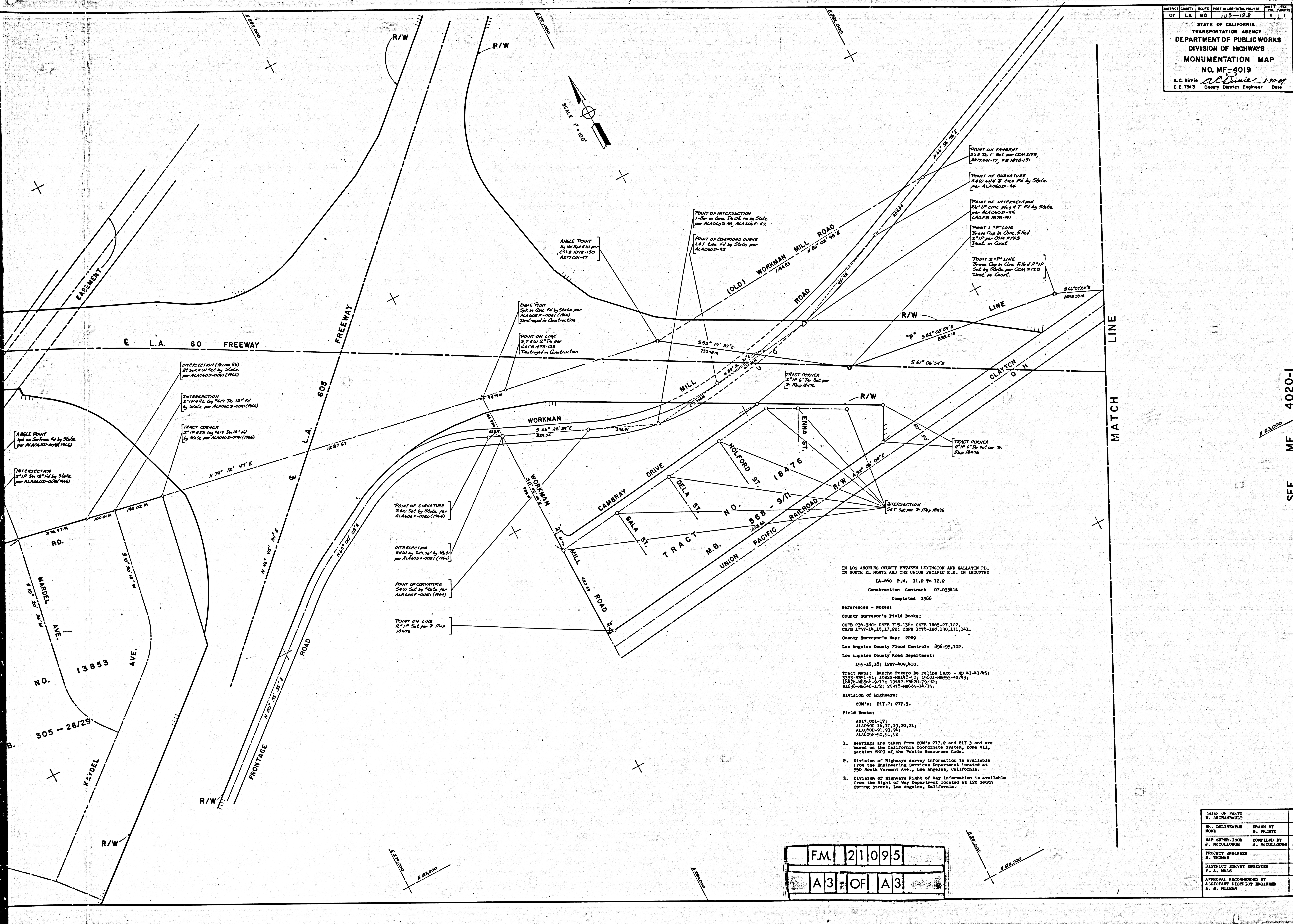
POINT OF INTERSECTION
Set by State

POINT OF CURVATURE
CIRC. Type 18" Man Set
per ALA60-001 (1944)

POINT OF INTERSECTION
Set by State

POINT OF CURVATURE
CIRC. Type 18" Man Set
per ALA60-001 (1944)

POINT OF INTERSECTION
Set by State



IN LOS ANGELES COUNTY BETWEEN LEXINGTON AND GALLATIN RD.
 IN SOUTH EL MONTZ AND THE UNION PACIFIC R.R. IN INDUSTRY
 LA-060 P.M. 11.2 TO 12.2
 Construction Contract 07-033818
 Completed 1966

- References - Notes:
- County Surveyor's Field Books:
 CSFB 236-380; CSFB 715-138; CSFB 1865-27,122;
 CSFB 1797-18,15,17,22; CSFB 1878-120,130,131,181.
 County Surveyor's Map: 2249
 Los Angeles County Flood Control: 896-95,102.
 Los Angeles County Road Department:
 155-16,18; 1277-409,410.
 Tract Maps: Rancho Patero de Felipe Lugo - MB 43-43/45;
 3333-MB51-A1; 10222-MB182-E0; 15601-MB353-A2/A3;
 130475-MB665-3/11; 13042-MB665-3/9/22;
 21638-MB246-1/2; 25278-MB665-34/35.
 Division of Highways:
 OCM's: 217.2; 217.3.
 Field Books:
 A217-001-17;
 ALA0602-10,17,19,20,21;
 ALA0602-01,23,24;
 ALA0602-50,51,52
- Bearings are taken from OCM's 217.2 and 217.3 and are based on the California Coordinate System, Zone VII, Section 8809 of the Public Resources Code.
 - Division of Highways survey information is available from the Engineering Services Department located at 550 South Vermont Ave., Los Angeles, California.
 - Division of Highways Right of Way information is available from the Right of Way Department located at 120 South Spring Street, Los Angeles, California.

F.M. 21095
 A3 OF A3

DISTRICT PARTY	V. ARCHAMBAULT	1/69
DR. DELIVERATOR	D. WILDER	1/69
MAP SUPERVISOR	J. MCDONOUGH	1/69
PROJECT ENGINEER	H. THOMAS	1/69
DISTRICT SURVEY ENGINEER	F. A. MAAS	1/69
APPROVAL RECOMMENDED BY ASSISTANT DISTRICT ENGINEER	H. S. MCELLEN	1/69

SEE MF 4020-1