

SEE MF-4052-1

F.M. 21099
A 1 OF A 3

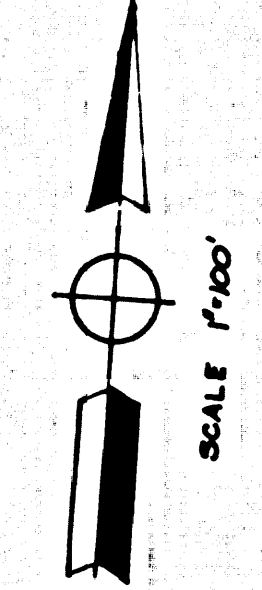
VENTURA COUNTY LINE
LOS ANGELES COUNTY LINE
EASTERLY BOUNDARY RANCHO SIMI

NE 1/4 SECTION 12
T2N, R17W

NW 1/4 SECTION 12
T2N, R17W

SE 1/4 SECTION 12
T2N, R17W

SW 1/4 SECTION 12
T2N, R17W



4,213,000

4,212,000

4,211,000

4,098,000

4,097,000

4,098,000

4,099,000

4,098,000

4,098,000

4,098,000

PRIMARY CONTROL LINE
CONST. L.A. 118

CONST. L.A. 118

NE 1/4 SECTION 12
TN 2, R 17 W

NW 1/4 SECTION 12
TN 2, R 17 W

SW 1/4 SECTION 12
TN 2, R 17 W

IVERSON ROAD

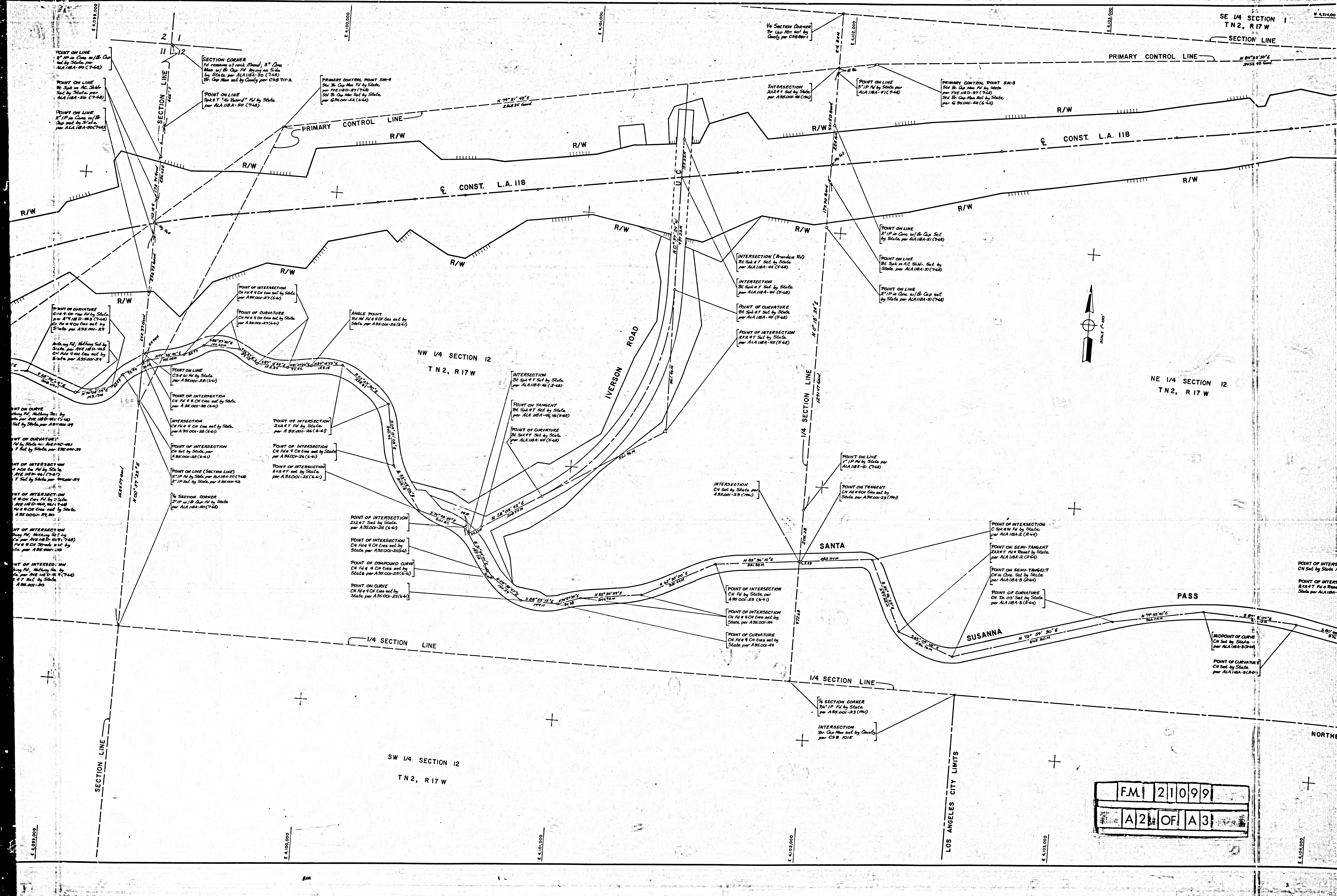
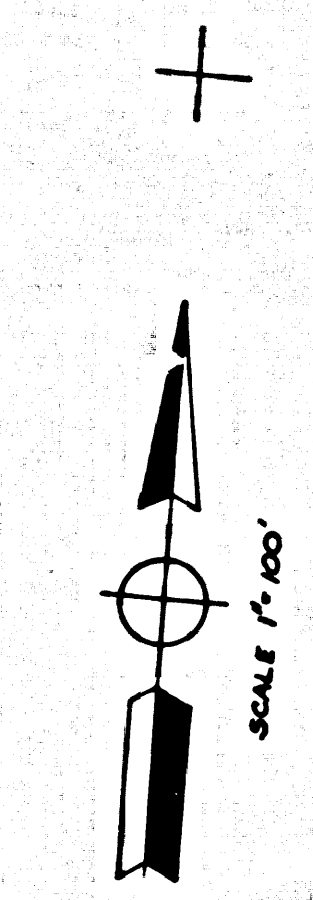
SANTA

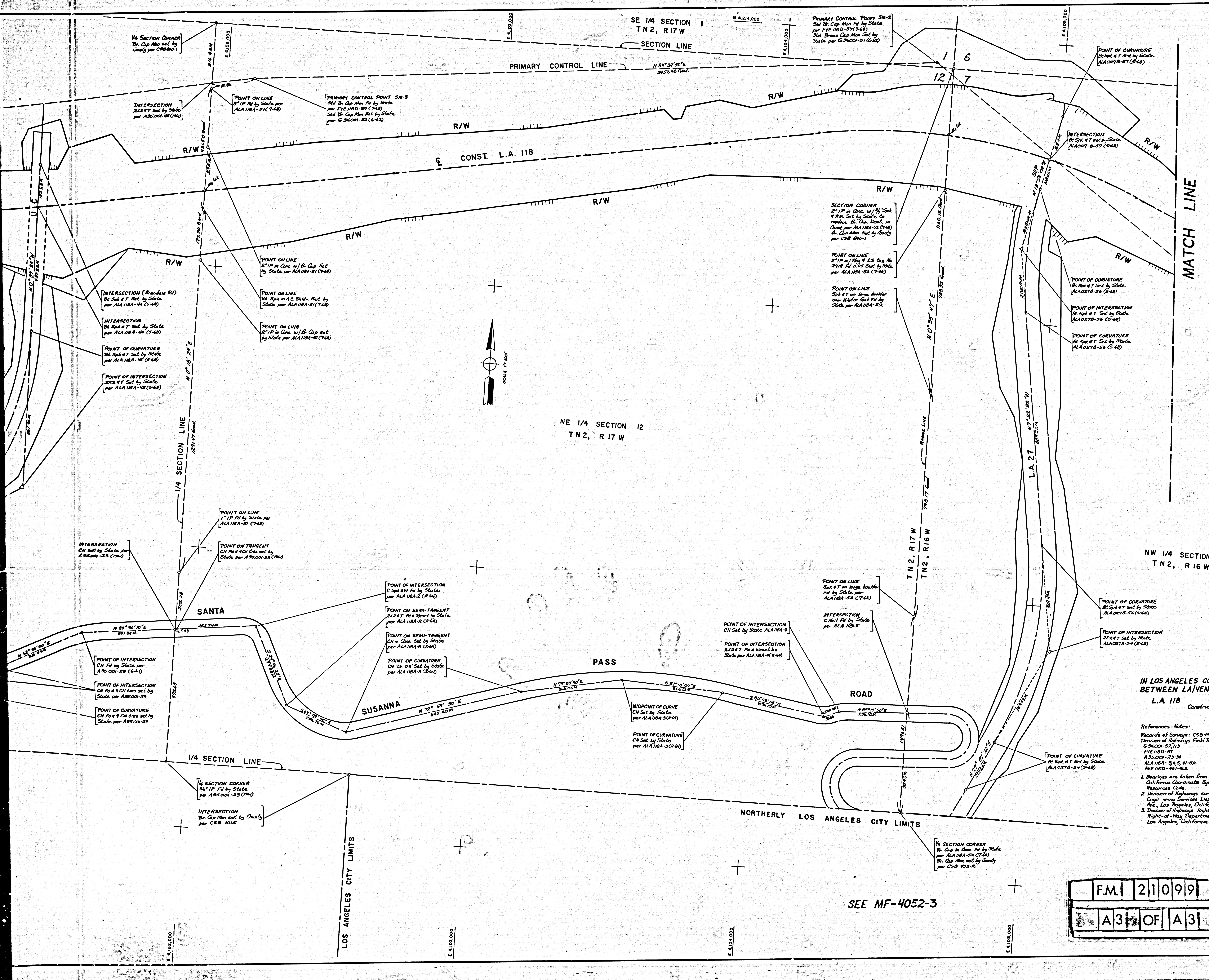
SUSANNA

PASS

LOS ANGELES CITY LIMITS

F.M. 211099
A2 OF A3





IN LOS ANGELES COUNTY NEAR LOS ANGELES
 BETWEEN LAJEN COUNTY LINE AND RTE 27.
 L.A. 118 PM. 000 to R25
 Construction Contract 07-022724
 Completed August 1963

- References - Notes:
- Records of Surveys: CSB 452-2, CSB 711-2, CSB 810-1, CSB 1015
 - Division of Highways Survey Information is available from the Engineering Services Department located at 550 South Vermont Ave., Los Angeles, California.
 - Division of Highways Right-of-Way Information is available from the Right-of-Way Department located at 152 South Spring Street, Los Angeles, California.

| Chief of Party | Date |
|--------------------------|-----------------------------|
| C. ALBIMINO | |
| Dr. Designer | D. PRITZ 1-69 |
| Map Supervisor | Mc CULLOUGH 1-69 |
| Project Engineer | H. THOMAS 1-69 |
| Contract Survey Engineer | F.A. MAAS 1-69 |
| Approved/Recommended by | Assistant District Engineer |
| K. Mc KEAN | 1-69 |

F.M. 21099
 A3 OF A3

SEE MF-4052-3

SEE MF-4100-1