

SEE MF 4017

TRACT NO. 701  
M.B. 16-110/III

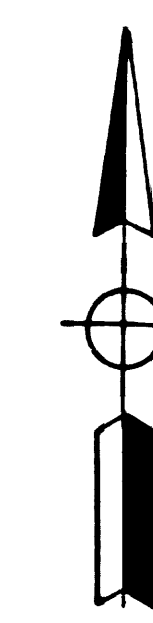
TRACT NO. 29531  
M.B. 736-71/74

TRACT NO. 4104  
M.B. 46-33

TRACT NO. 6077  
M.B. 65-25

F.M. 21101  
A1 OF A4

SCALE 1" = 100'



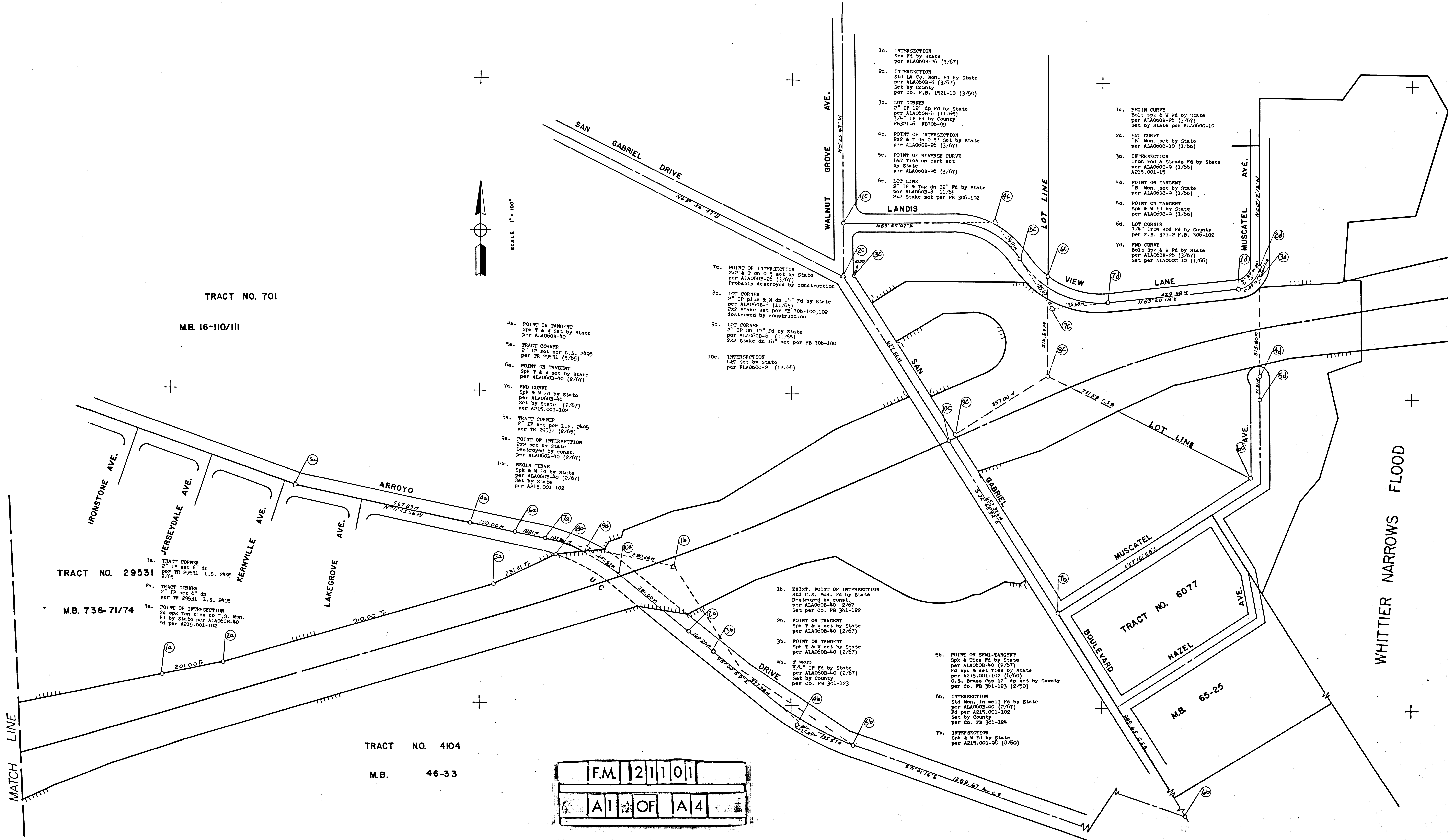
- 1c. INTERSECTION  
Spk Pd by State  
per ALA0608-26 (3/67)
- 2c. INTERSECTION  
Std LA Co. Mon. Pd by State  
per ALA0608-26 (3/67)  
Set by County  
per Co. F.B. 1521-10 (3/50)
- 3c. LOT CORNER  
2" IP 12" dp Pd by State  
per ALA0608-26 (3/67)  
3/4" IP Pd by County  
FR31-5 FR308-99
- 4c. POINT OF INTERSECTION  
2x2 & T dn 0.5" set by State  
per ALA0608-26 (3/67)
- 5c. POINT OF REVERSE CURVE  
140' Ties on curb set  
by State  
per ALA0608-26 (3/67)
- 6c. LOT LINE  
2" IP & T dn 12" Pd by State  
per ALA0608-26 (3/67)  
2x2 Stake set per FB 306-102

- 7c. POINT OF INTERSECTION  
2x2 & T dn 0.5" set by State  
per ALA0608-26 (3/67)  
Probably destroyed by construction
- 8c. LOT CORNER  
2" IP plus & N dn 12" Pd by State  
per ALA0608-26 (3/67)  
2x2 Stake set per FB 306-100,102  
destroyed by construction
- 9c. LOT CORNER  
2" IP dn 10" Pd by State  
per ALA0608-26 (3/67)  
2x2 Stake dn 15" set per FB 306-100
- 10c. INTERSECTION  
1x7 set by State  
per FLA060C-2 (12/66)

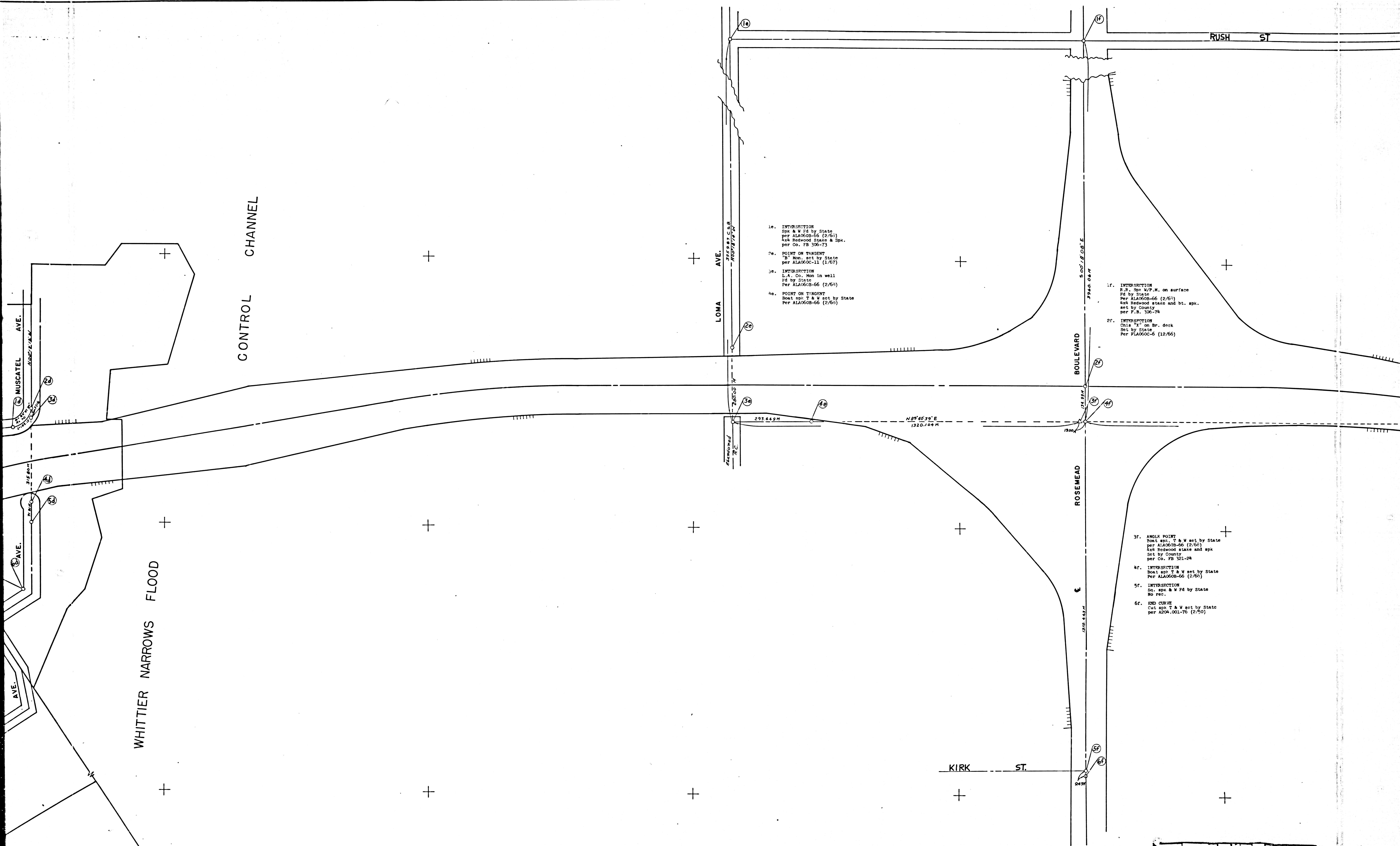
- 4a. POINT ON TANGENT  
Spk T & W set by State  
per ALA0608-40
- 5a. TRACT CORNER  
2" IP set per L.S. 2495  
per TR 29531 (5/65)
- 6a. POINT ON TANGENT  
Spk T & W set by State  
per ALA0608-40 (2/67)
- 7a. END CURVE  
Spk & W Pd by State  
per ALA0608-40  
Set by State (2/67)  
per A215.001-102
- 8a. TRACT CORNER  
2" IP set per L.S. 2495  
per TR 29531 (2/65)
- 9a. POINT OF INTERSECTION  
2x2 set by State  
Destroyed by const.  
per ALA0608-40 (2/67)
- 10a. BEGIN CURVE  
Spk & W Pd by State  
per ALA0608-40 (2/67)  
Set by State  
per A215.001-102

- 1b. EXIST. POINT OF INTERSECTION  
Std C.S. Mon. Pd by State  
Destroyed by const.  
per ALA0608-40 (2/67)  
Set per Co. FB 361-122
- 2b. POINT ON TANGENT  
Spk T & W set by State  
per ALA0608-40 (2/67)
- 3b. POINT ON TANGENT  
Spk T & W set by State  
per ALA0608-40 (2/67)
- 4b. 6' PROD  
3/4" IP Pd by State  
per ALA0608-40 (2/67)  
Set by County  
per Co. FB 361-123

- 5b. POINT ON SEMI-TANGENT  
Spk & Ties Pd by State  
per ALA0608-40 (2/67)  
Pd spk & set Ties by State  
per A215.001-102 (3/60)  
C.S. Brass Cap 12" dp set by County  
per Co. FB 361-123 (2/50)
- 6b. INTERSECTION  
Std Mon. in wall Pd by State  
per ALA0608-40 (2/67)  
Pd per A215.001-102  
Set by County  
per Co. FB 361-124
- 7b. INTERSECTION  
Spk & W Pd by State  
per A215.001-98 (5/60)







1e. INTERSECTION  
Spk & W Pd by State  
per ALA0608-66 (2/65)  
4x4 Redwood Stake & Spk.  
per Co. FB 306-73

2e. POINT ON TANGENT  
"B" Mon. set by State  
per ALA0600-11 (1/67)

3e. INTERSECTION  
L.A. Co. Mon in well  
Pd by State  
Per ALA0608-66 (2/65)

4e. POINT ON TANGENT  
Road spk. T & W set by State  
Per ALA0608-66 (2/65)

1f. INTERSECTION  
R.F. Spk W/P.M. on surface  
Pd by State  
Per ALA0608-66 (2/65)  
4x4 Redwood stake and bt. spk.  
set by County  
per P.B. 306-74

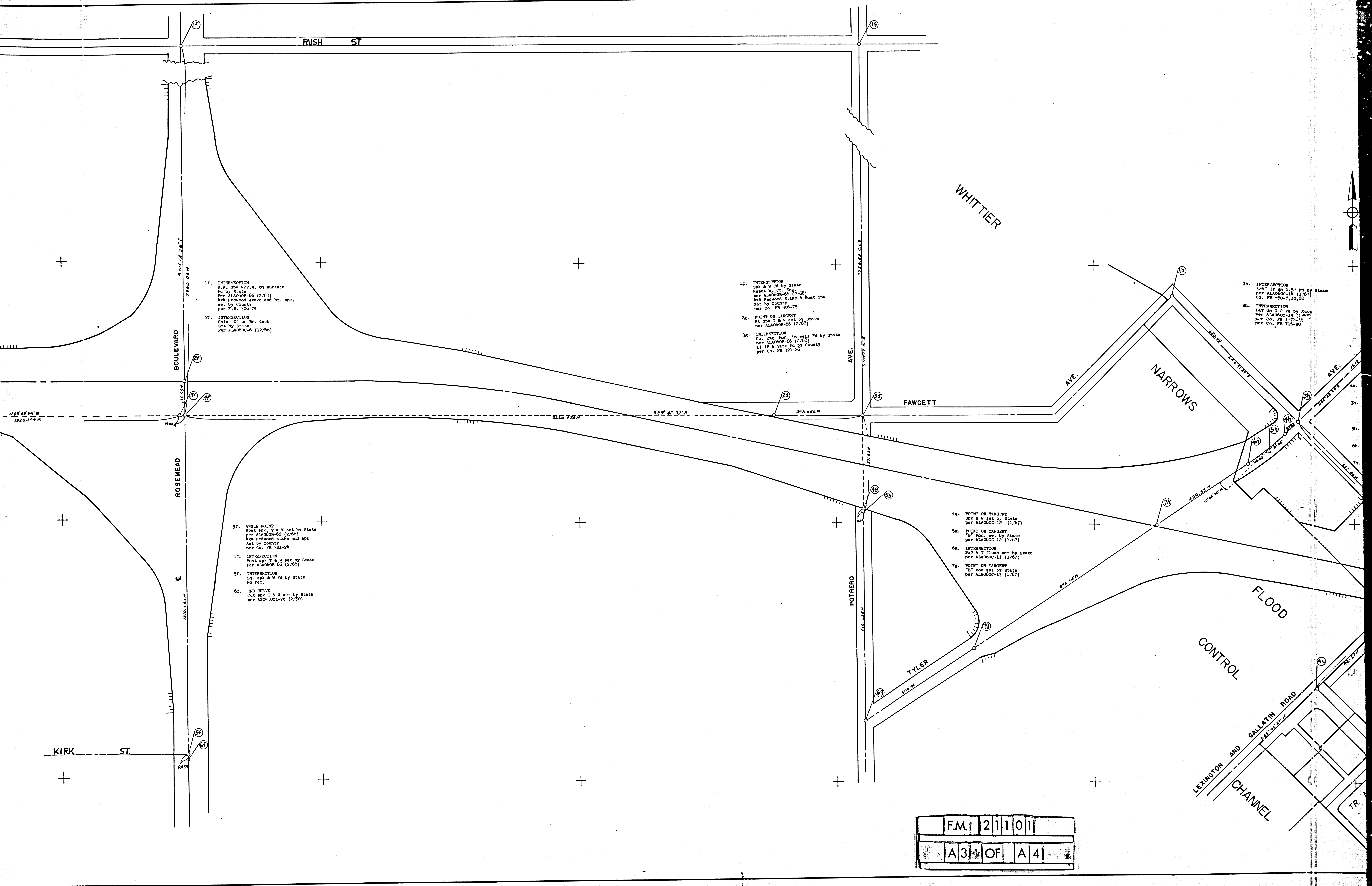
2f. INTERSECTION  
Chia "X" on Br. deck  
Set by State  
Per FLA0600-6 (12/66)

3f. ANGLE POINT  
Road spk. T & W set by State  
per ALA0608-66 (2/65)  
4x4 Redwood stake and spk  
Set by County  
per Co. FB 321-24

4f. INTERSECTION  
Road spk. T & W set by State  
Per ALA0608-66 (2/65)

5f. INTERSECTION  
Sq. spk & W Pd by State  
No rec.

6f. END CURVE  
Cut spk. T & W set by State  
per A204.001-76 (2/50)



1f. INTERSECTION  
 R.I. 300 W.P.M. on surface  
 Pd by State  
 Per ALA0608-66 (2/66)  
 4x4 Redwood stake and bt. spk  
 set by County  
 per F.B. 506-74

2f. INTERSECTION  
 Chis "X" on Br. deck  
 Set by State  
 Per FLA060C-6 (12/66)

1g. INTERSECTION  
 Spk & W Pd by State  
 Reset by Co. Eng.  
 per ALA0608-66 (2/66)  
 4x4 Redwood Stake & Boat Spk  
 Set by County  
 per Co. FB 306-75

2g. POINT ON TANGENT  
 Bt Spk T & W set by State  
 per ALA0608-66 (2/66)

3g. INTERSECTION  
 Co. Eng. Mon. in well Pd by State  
 per ALA0608-66 (2/66)  
 11 1/2" & Tack Pd by County  
 per Co. FB 321-26

1h. INTERSECTION  
 3/4" IP on 1.5" Pd by State  
 per ALA060C-16 (1/67)  
 Co. FB 950-5,10,38

2h. INTERSECTION  
 LAT on 0.2 Pd by State  
 per ALA060C-13 (1/67)  
 per Co. FB 175-15  
 per Co. FB 715-20

3f. ANGLE POINT  
 3x6x6 spk, T & W set by State  
 per ALA0608-66 (2/66)  
 4x4 Redwood stake and spk  
 set by County  
 per Co. FB 321-24

4f. INTERSECTION  
 Boat spk T & W set by State  
 Per ALA0608-66 (2/66)

5f. INTERSECTION  
 Spk, spk & W Pd by State  
 No rec.

6f. END CURVE  
 Cut spk T & W set by State  
 per A204.001-76 (2/50)

4g. POINT ON TANGENT  
 Spk & W set by State  
 per ALA060C-12 (1/67)

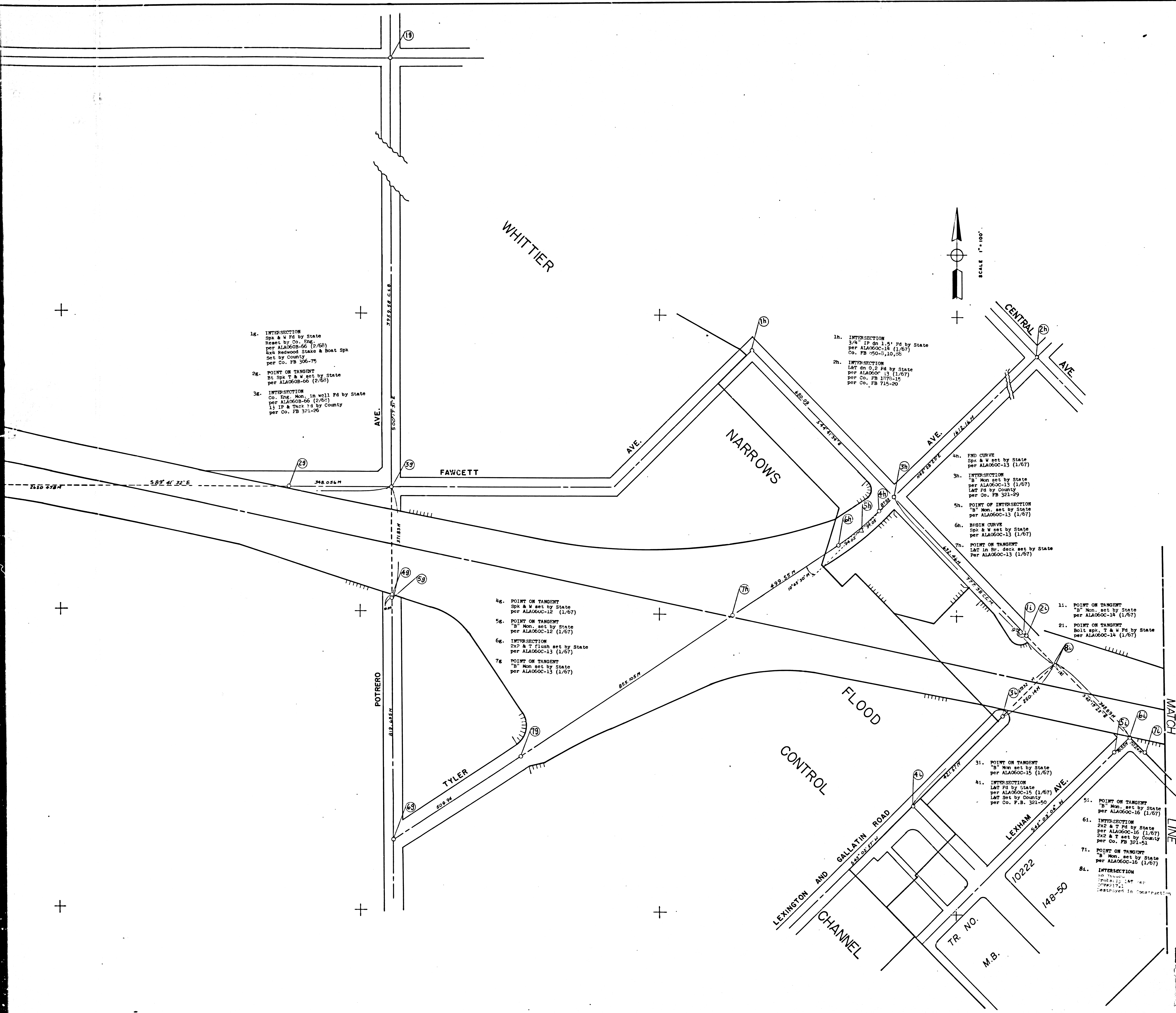
5g. POINT ON TANGENT  
 "B" Mon. set by State  
 per ALA060C-12 (1/67)

6g. INTERSECTION  
 2x2 & T lines set by State  
 per ALA060C-13 (1/67)

7g. POINT ON TANGENT  
 "B" Mon set by State  
 per ALA060C-13 (1/67)

F.M.	2	1	1	0	1
A	3	OF	A	4	





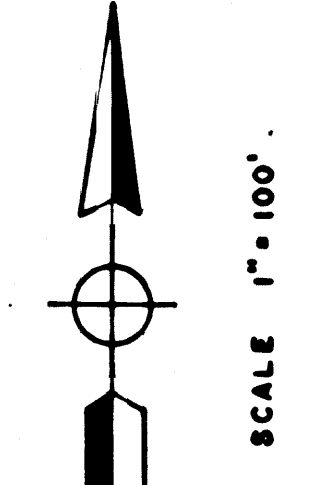
16. INTERSECTION  
Spk & W Pd by State  
Nest: by Co. Eng.  
per ALA0608-06 (2/68)  
Bolt Redwood Stake & Bolt Spk  
Set by County  
per Co. FB 306-75

26. POINT ON TANGENT  
Bt Spk T & W set by State  
per ALA0608-06 (2/68)

36. INTERSECTION  
Co. Eng. Mon. in well Pd by State  
per ALA0608-06 (2/68)  
1) IP & Tack Id by County  
per Co. FB 371-26

1h. INTERSECTION  
3/4" IP on 1.5' Pd by State  
per ALA0608-14 (1/67)  
Co. FB 750-5, 10, 36

2h. INTERSECTION  
L&T on 0.2 Pd by State  
per ALA0608-13 (1/67)  
per Co. FB 1770-15  
per Co. FB 715-20



WHITTIER

CENTRAL AVE

NARROWS AVE

FAWCETT AVE

POTRERO AVE

TYLER AVE

FLOOD CONTROL CHANNEL

LEXINGTON AND GALLATIN ROAD

LEXINGTON AVE

10222

148-50

TR. NO.

M.B.

SEE MF 4019

IN LOS ANGELES COUNTY BETWEEN ANNOY DRIVE AND LEADING N-GALLATIN ROAD  
LA-060 P.M. 8.5 to 10.5  
Construction Contract 07-033424  
Completed 1-13-67

References - Notes  
County Surveyor's Field Books:  
CSFB 26-73/75, 99, 100, 102; CSFB 321-2, 6, 24, 26, 29, 50, 51; CSFB 301-122/124;  
CSFB 715-80; CSFB 950-1, 10, 35; CSFB 1521-101; CSFB 177-15.

Tract Maps:  
701-MB1-110/111; 1104-MB46-33; 6077-MB65-25; 10222-MB143-50;  
2-531-MB736-71/74.

Division of Highways Field Books:  
AP04-001-76; AP15-001-15, 26, 102; ALA0608-3, 26, 40, 66; ALA0608-2, 6, 9/16.

- Bearings are taken from GDM 217.1 and are based on the California Coordinate System, Zone VII, Sec. 3500 of the Public Resources Code.
- Division of Highways survey information is available from the Engineering Services Department located at 550 South Vermont Ave., Los Angeles, California.
- Division of Highways Right-of-Way information is available from the Right of Way Department located at 120 South Spring St., Los Angeles, California.

Chief of Party	K. LINVILLE	Date	
Sr. Deinspector	NONE	Drawn by	MCULLOUGH
Map Supervisor	MCULLOUGH	Checked by	MCULLOUGH
Project Engineer	H. THOMAS		
District Survey Engineer	F. MAAS		
Approval recommended by	K. MCKEAN		

F.M. 211011  
A4 OF A4