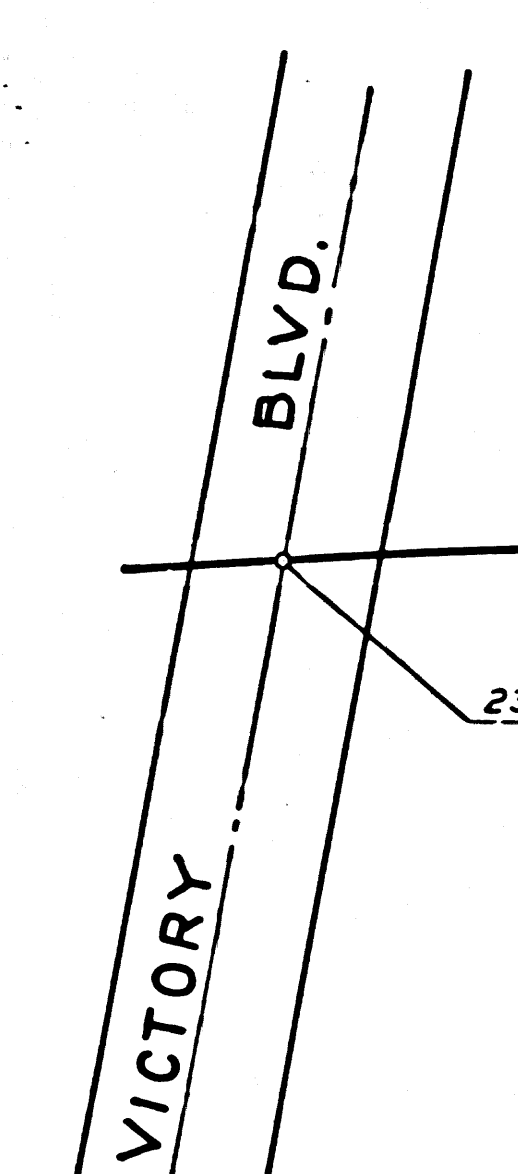
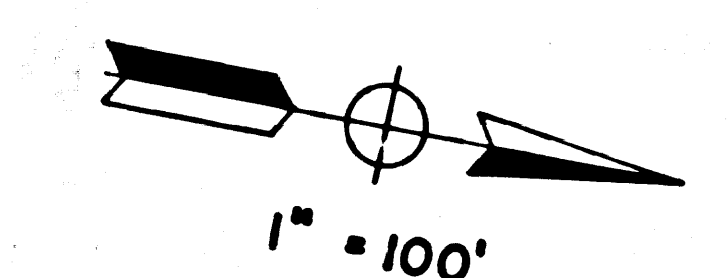
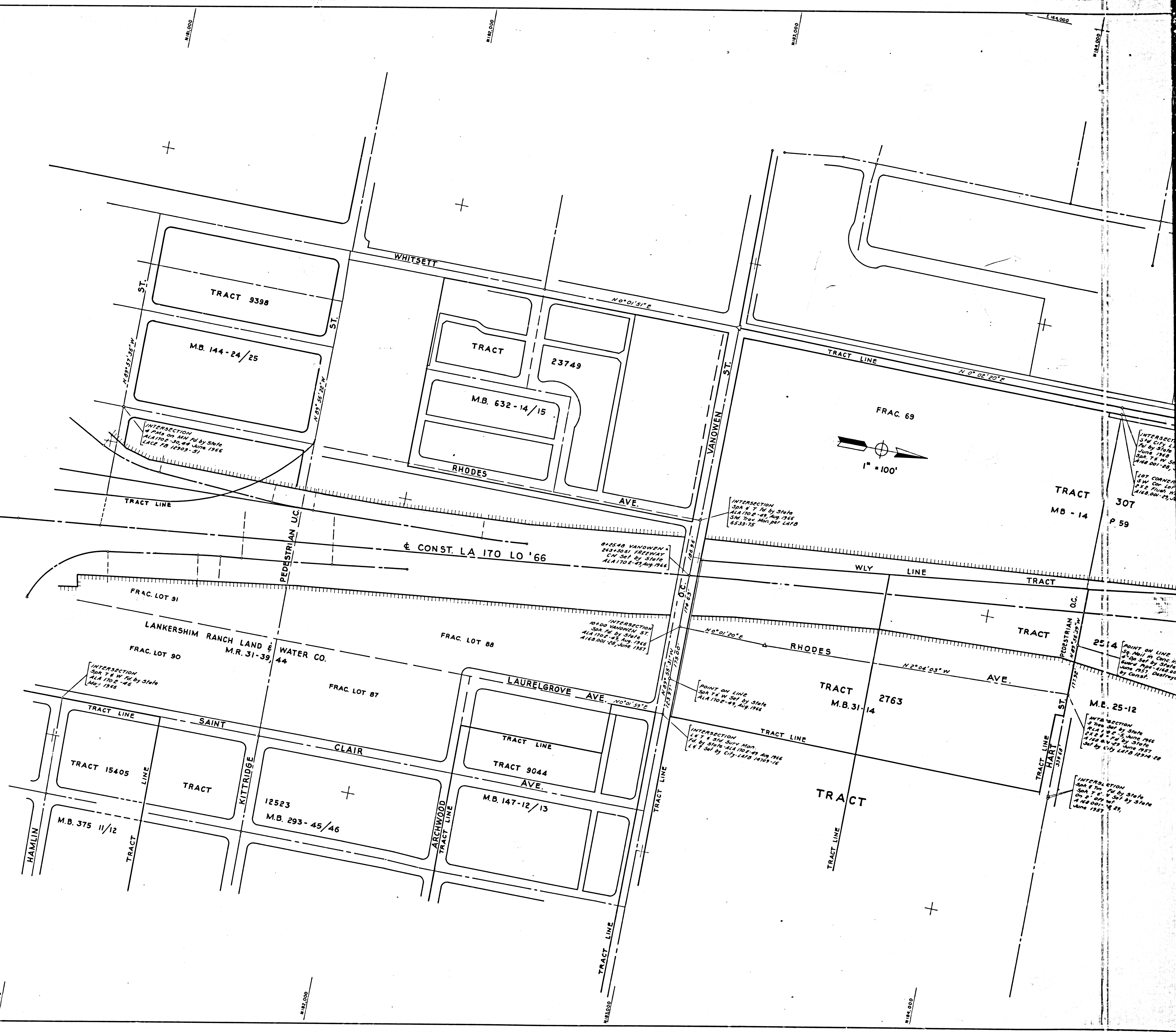


SEE MF 4001-1

F.M. 21102
A1 OF A2



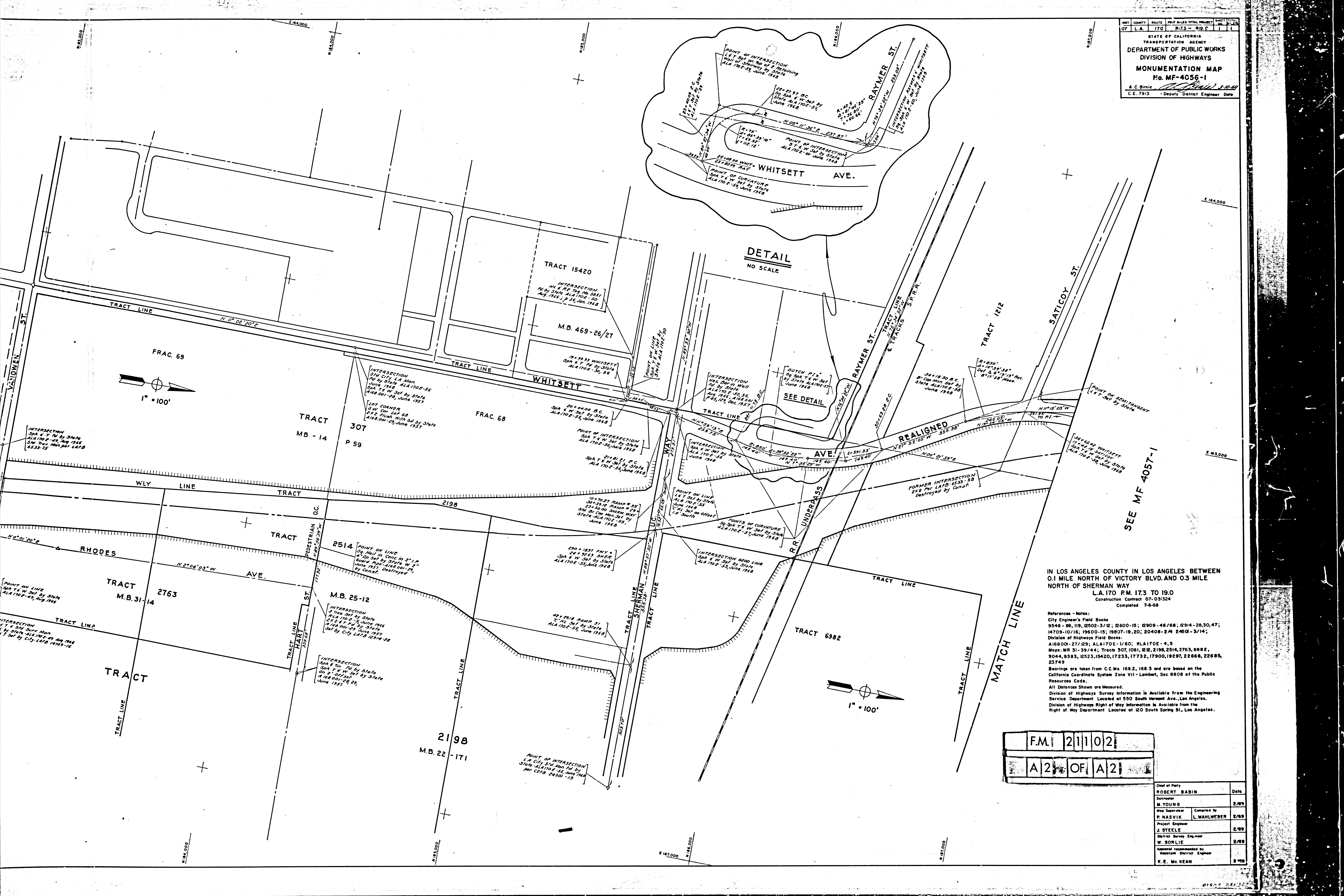
INTERSECTION
S&W 7th St by State
June 1968
S&W 7th St by State
June 1968
S&W 7th St by State
June 1968

LOT CORNER
S&W 7th St by State
June 1968
S&W 7th St by State
June 1968

POINT ON LINE
S&W 7th St by State
June 1968
S&W 7th St by State
June 1968

INTERSECTION
S&W 7th St by State
June 1968
S&W 7th St by State
June 1968

INTERSECTION
S&W 7th St by State
June 1968
S&W 7th St by State
June 1968



DETAIL
NO SCALE

SEE MF 4057-1

IN LOS ANGELES COUNTY IN LOS ANGELES BETWEEN
 0.1 MILE NORTH OF VICTORY BLVD. AND 0.3 MILE
 NORTH OF SHERMAN WAY
 L.A. 170 P.M. 17.3 TO 19.0
 Construction Contract 07-031324
 Completed 7-6-68

References - Notes:
 City Engineer's Field Books
 9546-89, 119, 12502-3/12; 12600-15; 12909-46/68; 12914-28,30,47;
 14709-10/16; 19600-15; 19807-19,20; 20408-24 24501-3/14;
 Division of Highways Field Books:
 A16800-27/29; A14170E-1/60; R14170E-4,5
 Maps, MR 31-39/44; Tracts 307,1081,1212,2198,2514,2763,6982,
 9044,9383,12523,15420,17233,17732,17900,19297,22668,22685,
 23749
 Bearings are taken from C.C.Ms 168.2, 168.3 and are based on the
 California Coordinate System Zone VII - Lambert, Sec. 8808 of the Public
 Resources Code.
 All Distances Shown are Measured.
 Division of Highways Survey Information is Available from the Engineering
 Service Department Located at 550 South Vermont Ave., Los Angeles.
 Division of Highways Right of Way Information is Available from the
 Right of Way Department Located at 120 South Spring St., Los Angeles.

F.M. 21102
 A 2 OF A 2

Chief of Party	ROBERT BABIN	Date	
Draftsman	M. YOUNG	2/69	
Map Supervisor	P. NASVIK	Completed by	L. WAHLWEBER 2/69
Project Engineer	J. STEELE	2/69	
District Survey Engineer	W. SORLIE	2/69	
Approval recommended by	Assistant District Engineer		
	K.E. Mc REAN	2/69	