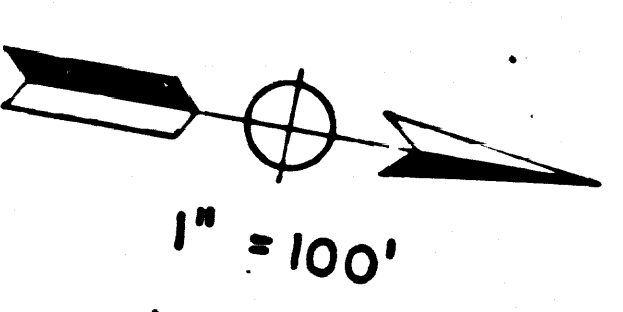
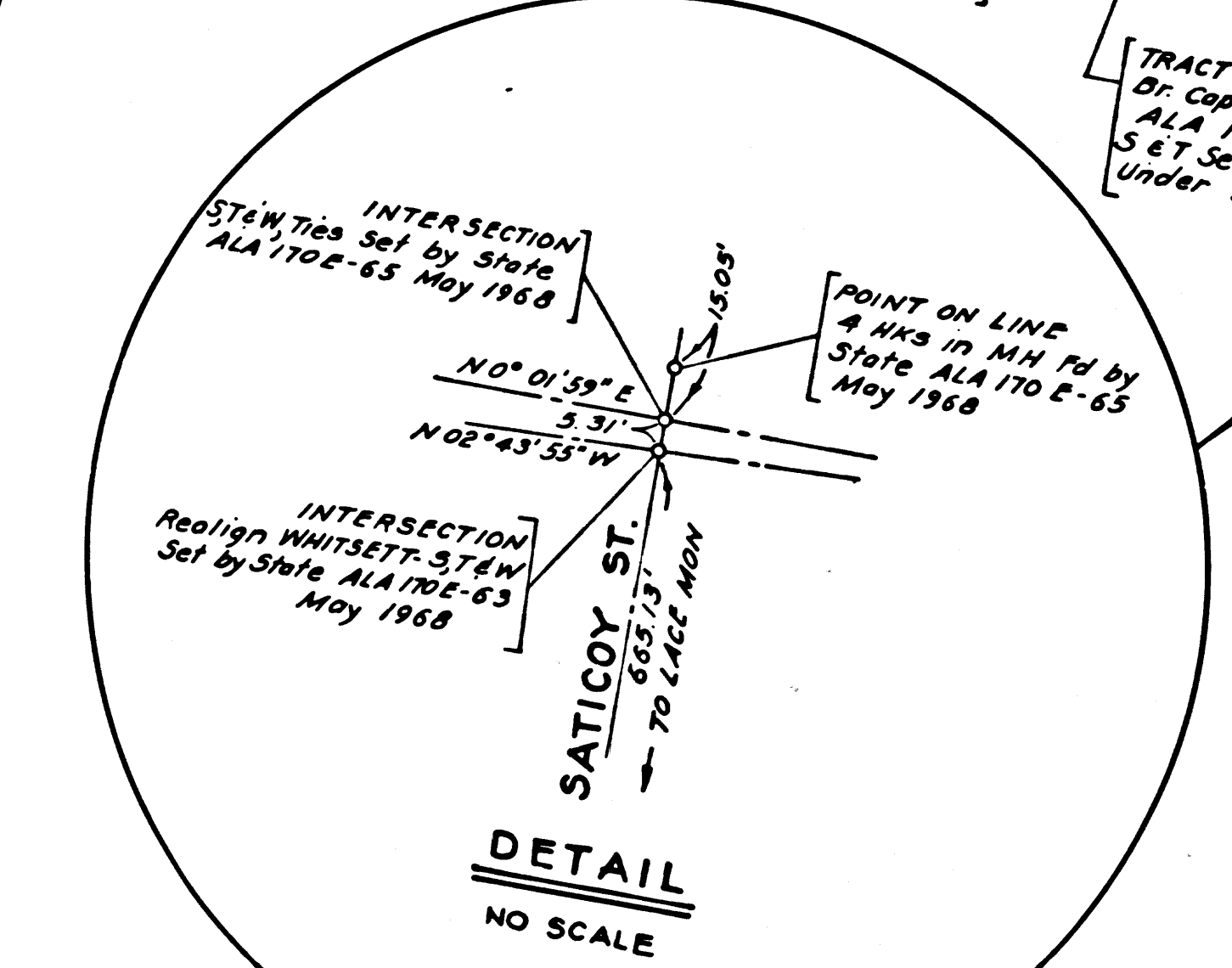
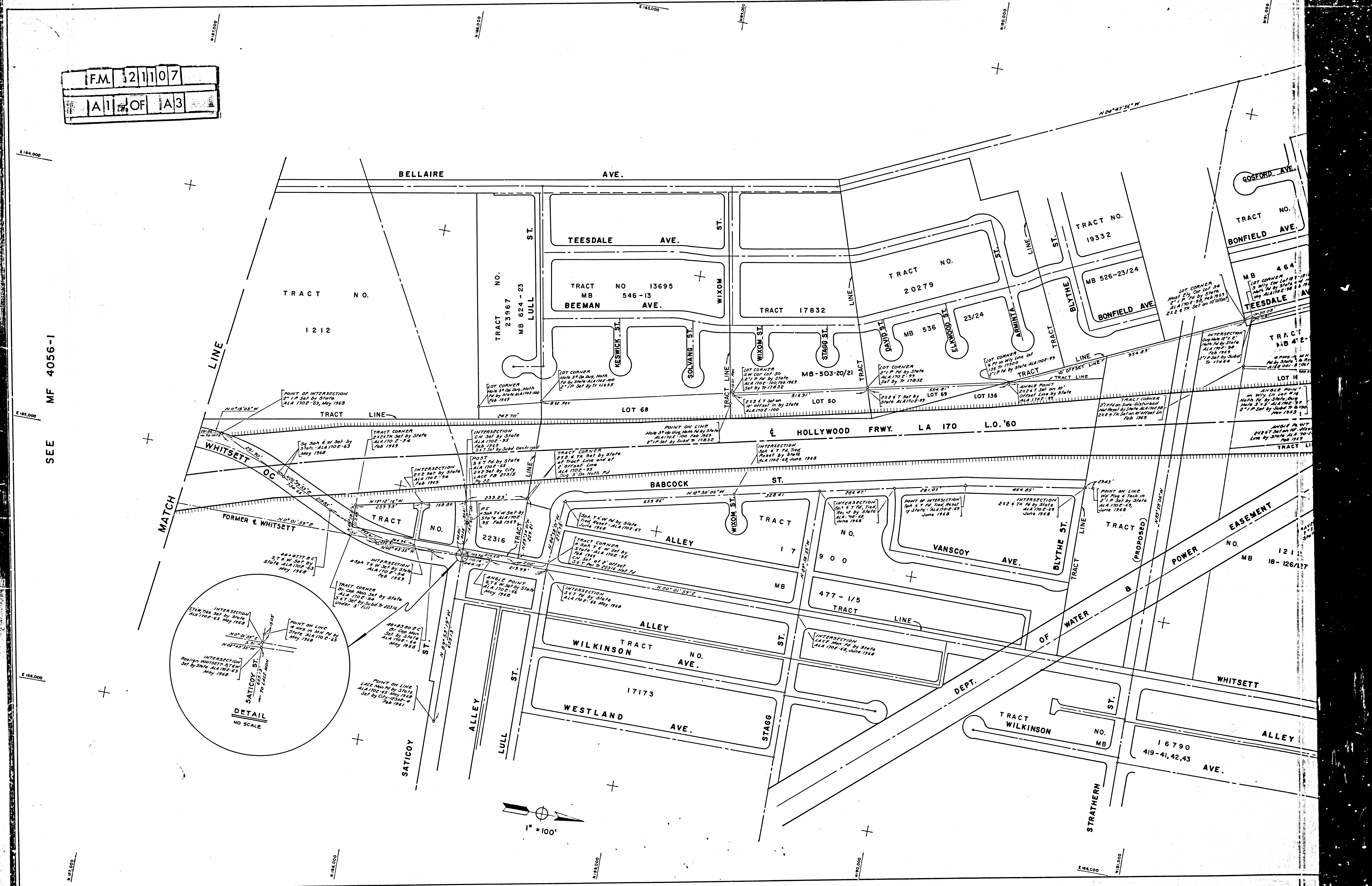
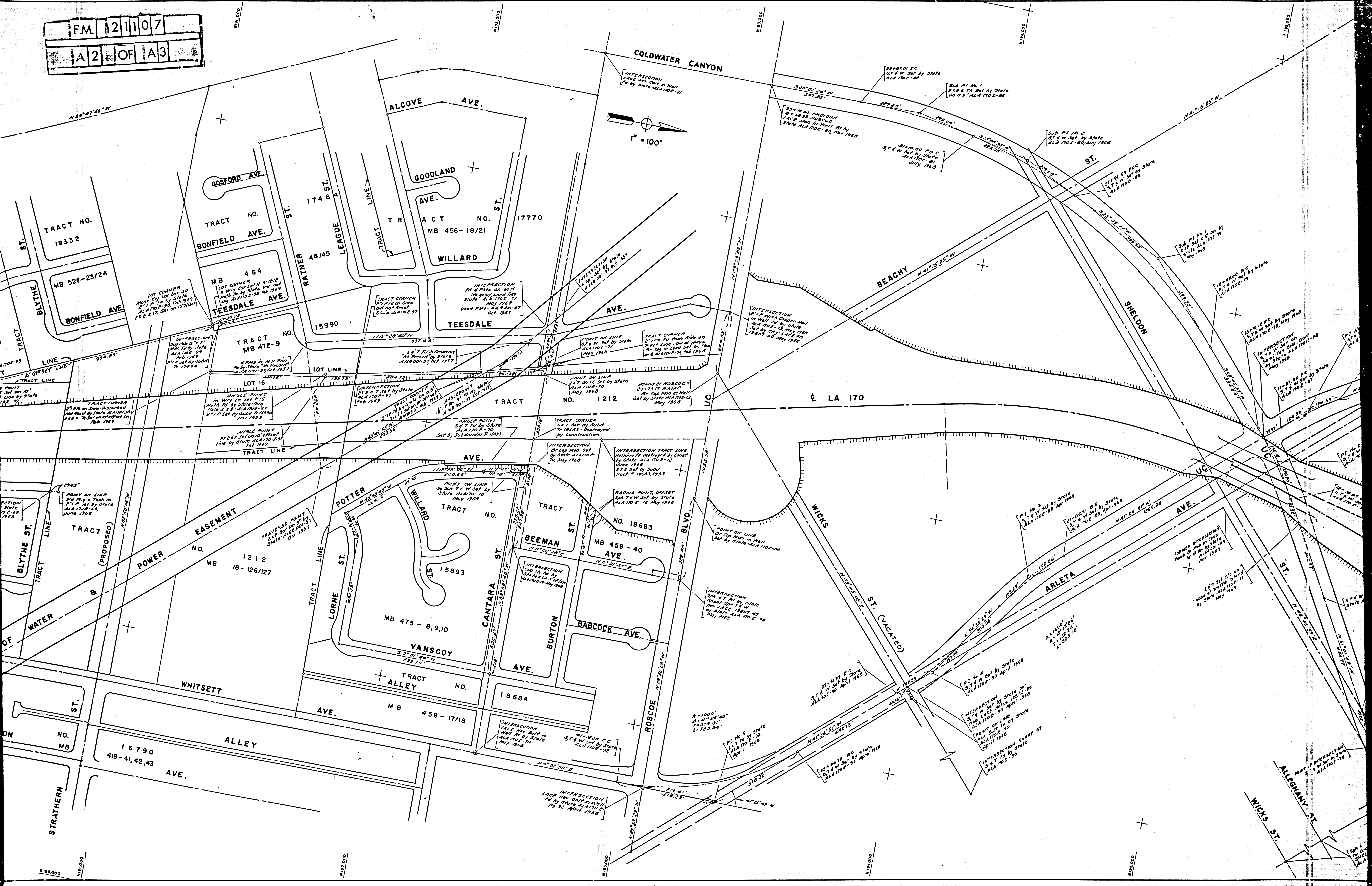
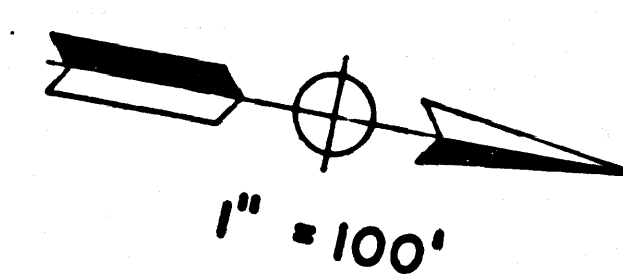


F.M. 521107
A1 OF A3

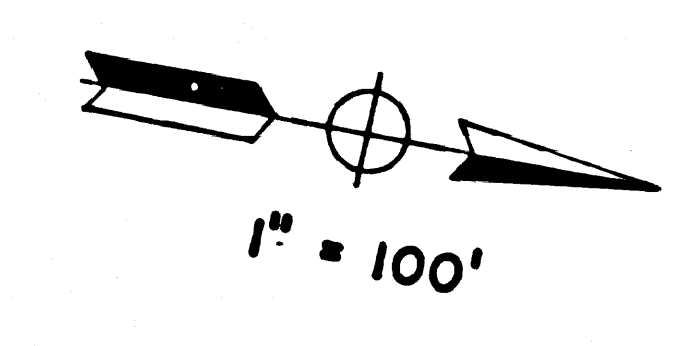
SEE MF 4056-1





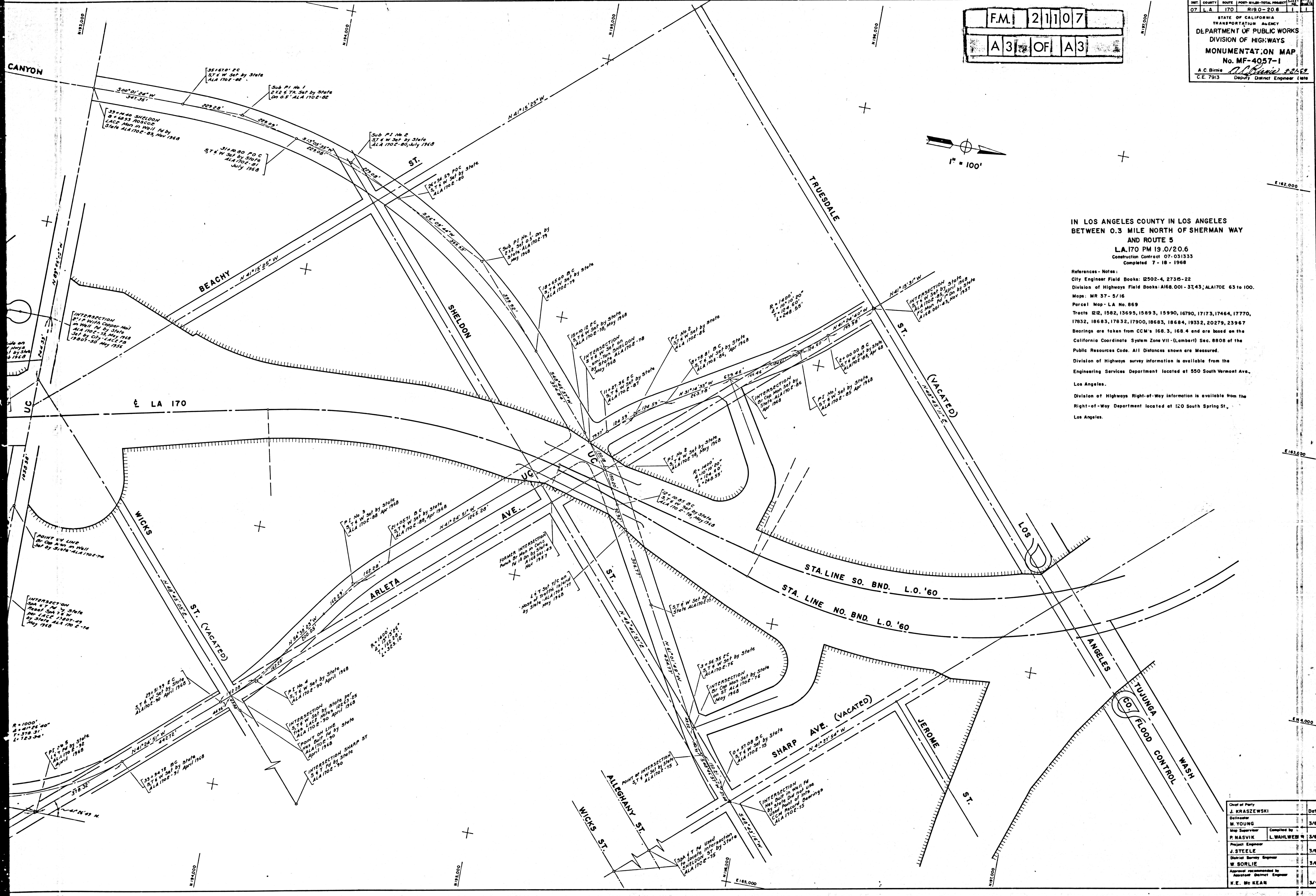
F.M. 21107
A 3 OF A 3

SHEET NO. 1 OF 1
STATE OF CALIFORNIA
TRANSPORTATION AGENCY
DEPARTMENT OF PUBLIC WORKS
DIVISION OF HIGHWAYS
MONUMENTATION MAP
No. MF-4057-1
A. C. Birnie, Deputy District Engineer (late)



IN LOS ANGELES COUNTY IN LOS ANGELES
BETWEEN 0.3 MILE NORTH OF SHERMAN WAY
AND ROUTE 5
L.A. 170 PM 19.0720.6
Construction Contract 07-031333
Completed 7-18-1968

References - Notes:
City Engineer Field Books: 2502-4, 2735-22
Division of Highways Field Books: A168,001-37,43; A1A170E 63 to 100.
Maps: MR 37-5/16
Parcel Map - L.A. No. 869
Tracts: 122, 1582, 13695, 15893, 15990, 16790, 17173, 17464, 17770, 17832, 18683, 17832, 17900, 18683, 18684, 19352, 20279, 23967
Bearings are taken from CCM's 168.3, 168.4 and are based on the California Coordinate System Zone VII - (Lambert) Sec. 8808 of the Public Resources Code. All Distances shown are Measured.
Division of Highways survey information is available from the Engineering Services Department located at 550 South Vermont Ave., Los Angeles.
Division of Highways Right-of-Way information is available from the Right-of-Way Department located at 120 South Spring St., Los Angeles.



Chief of Party	Date
J. KRASZEWSKI	3/69
Designer	
M. YOUNG	3/69
Map Supervisor	Completed by
P. NASVIK	L. WAHLWEB
Project Engineer	3/69
J. STEELE	3/69
Detail Survey Engineer	
W. SORLIE	3/69
Approval recommended by	
Assistant District Engineer	
H. E. Mc KEAN	3/70