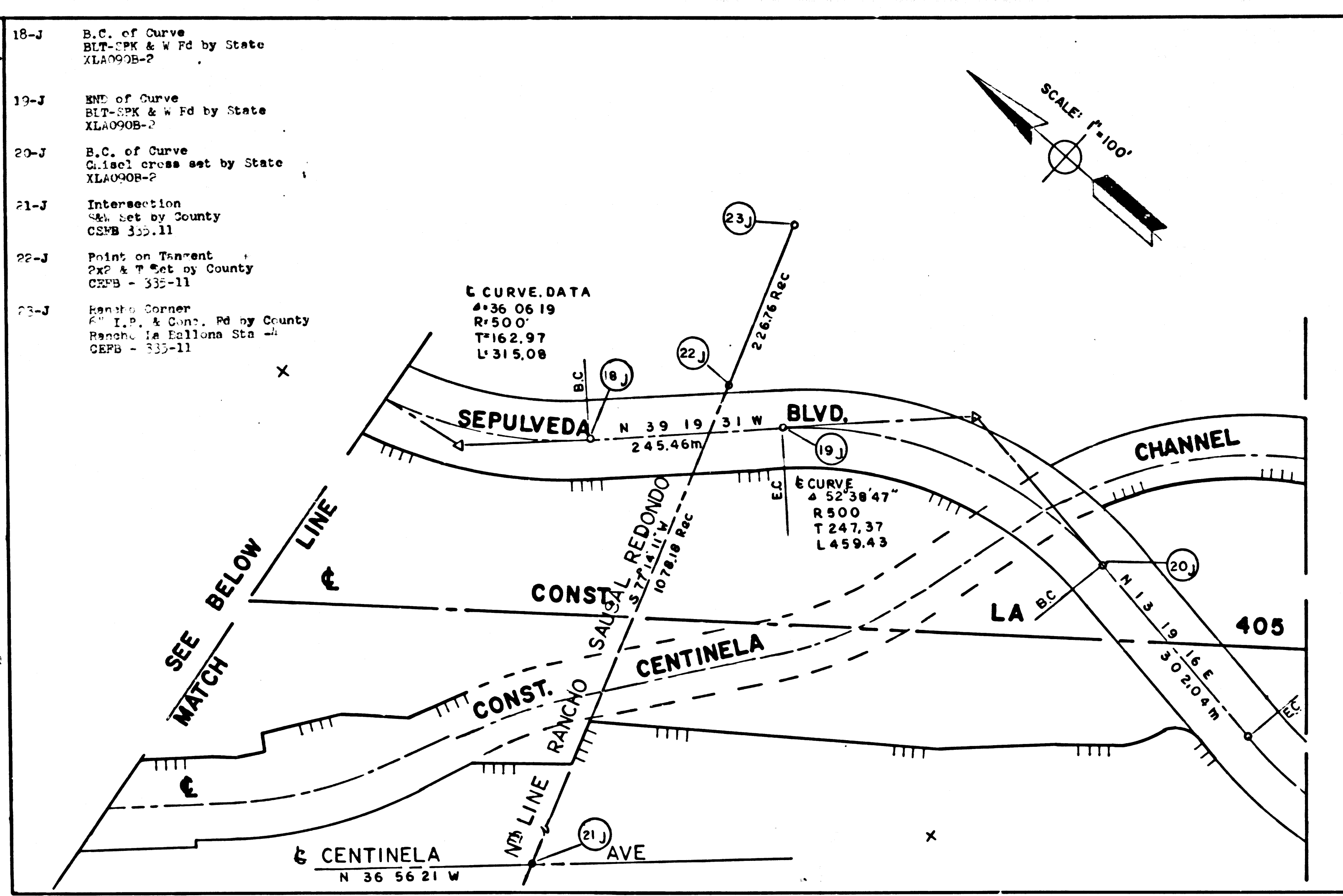
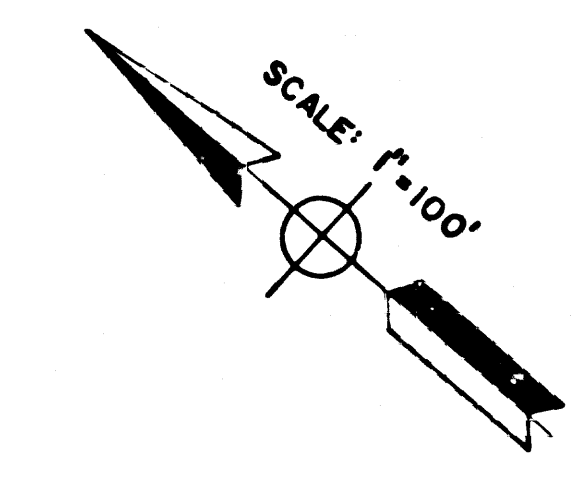


STATE OF CALIFORNIA
 TRANSPORTATION AGENCY
 DEPARTMENT OF PUBLIC WORKS
 DIVISION OF HIGHWAYS
MONUMENTATION MAP
 No. MF-4045-1
 A.C. Smith: *A.C. Smith* 5/1/69
 C.E. 7913 Deputy District Engineer Date



- 1. INTERSECTION
C-111 Set by State
A339,001-5
- 2. ANGLE POINT
Spk & W set by State
A339,001-5
- 3. ANGLE POINT
Spk & W set by State
A339,001-5
- 4. INTERSECTION
L & T set by State
A339,001-7
- 5. INTERSECTION
Spk & W set by State
A339,001-5
- 6. INTERSECTION
Zone-M set by State
A339,001-5
- 7. ANGLE POINT
Spk & W set by State
A339,001-5
- 8. POINT ON TANGENT
Spk & W set by State
A339,001-5
- 9. INTERSECTION
L & T set by State
A339,001-7
- 10. POINT ON TANGENT
Spk & W set by Surveyor
Per Tract #175-21
- 11. TRACT CORNER
2" I.P. set by Surveyor
Per Tract #175-21
- 12. ANGLE POINT
Spk & W set by City of Culver City
Per Tract #175-21
- 13. INTERSECTION
Spk & W set by Surveyor
Per Tract #175-21

LA 90/405 INTERCHANGE
 IN LOS ANGELES COUNTY IN THE CITY OF CULVER CITY
 BETWEEN CENTINELA AVE & SLAUSON AVE WITH
 CONNECTIONS TO ROUTE LA 90/405.

LA 90 PM.18 TO 33
 CONSTRUCTION CONTRACT 07-032823
 COMPLETED 12-10-68

Survey Notes - References
 LA City Surveyor - Field Books:
 12704-14-50 12409-56 22510-31-53 10662-23-25
 LA Co Surveyor's Field Books:
 335-891041 269-24-28-29-89 1794-53-63
 Tract Maps: 17531-17468-10038-16489-9740-17241-5184-9483
 15224-17468-17553-6265-16934-16359-16955-17352-16883-26941
 10684-8832-10678-15224-26941
 DIVISION OF HIGHWAYS COORDINATE CONTROL MAP & FIELD NOTES.
 (CCM) 3371 DEC 68.
 ALA090A - P65-36-67 (ALA090B-1-18) (XLA090B-2-12)
 A165,001 - P65-26-48 (A139,001-3-9)
 1. Bearing are taken from CCM 3371 and are based on the California
 Coordinate System Zone VII Sec. 8008 of the Public Resources Code
 2. Division of Highways Survey information is available from
 the Engineering Services Department located at 550 South
 Vermont Ave, Los Angeles, Calif.
 3. Division of Highways Right-of-Way information is available from
 the Right of Way Department located at 120 South Spring St,
 Los Angeles, Calif.

F.M. 21123
 A2 OF A2

Checked by	DATE
P. WINTER	
Checked by L. DAVIS	4/69
Map Supervisor J. MUSSENSEN	4/69
Project Engineer W. STEELE	4/69
District Survey Engineer M. SOLRI	4/69
Approved & Recommended by A. Dwyer Engineer	
K.E. MCKEAN	4/69

- 16. B.C. of Curve
Spk set by State
ALA090A-48
- 26. ANGLE POINT
Spk set by State
A105,001-43
- 36. P.R.C. of CURVE
Spk set by State
A105,001-43
- 46. ANGLE POINT
Spk set by State
A105,001-43
- 56. M.P.C. of CURVE
Spk set by State
A105,001-43
- 66. ANGLE POINT
Spk set by State
A105,001-43
- 76. B.C. of CURVE
Spk & W set by State
A105,001-43
- 86. TRACT CORNER
2" I.P. set by R.C.E. #758
Per Tract #175-21
- 96. INTERSECTION
Spk & W set by State
ALA090A-48
- 106. INTERSECTION
Spk & W set by State
ALA090A-43
- 116. INTERSECTION
Spk & W set by State
A105,001-43
- 126. INTERSECTION
Spk & W set and destroyed in Const.
by State
ALA090A-43
- 136. INTERSECTION
Spk & W set by State
A105,001-43
- 146. ANGLE POINT
Spk set by R.C.E. #758
Per Tract #175-21
- 156. INTERSECTION
Spk & W set by State
ALA090A-47
- 166. INTERSECTION
Spk & W set and destroyed in const.
ALA090A-47
- 176. INTERSECTION
Spk & W set by State
ALA090A-43
- 186. INTERSECTION
Spk & W set by State
ALA090A-43
- 196. INTERSECTION
Spk & W set by State
ALA090A-43
- 206. INTERSECTION
Spk & W set by State
ALA090A-43
- 216. INTERSECTION
Spk & W set by State
ALA090A-43
- 226. INTERSECTION
Spk & W set by State
ALA090A-43
- 236. INTERSECTION
Spk & W set by State
ALA090A-43
- 246. INTERSECTION
Spk & W set by State
ALA090A-43
- 256. INTERSECTION
Spk & W set by State
ALA090A-43
- 266. INTERSECTION
Spk & W set by State
ALA090A-43
- 276. INTERSECTION
Spk & W set by State
ALA090A-43
- 286. INTERSECTION
Spk & W set by State
ALA090A-43
- 296. INTERSECTION
Spk & W set by State
ALA090A-43
- 306. INTERSECTION
Spk & W set by State
ALA090A-43
- 316. INTERSECTION
Spk & W set by State
ALA090A-43
- 326. INTERSECTION
Spk & W set by State
ALA090A-43
- 336. INTERSECTION
Spk & W set by State
ALA090A-43
- 346. INTERSECTION
Spk & W set by State
ALA090A-43
- 356. INTERSECTION
Spk & W set by State
ALA090A-43
- 366. INTERSECTION
Spk & W set by State
ALA090A-43
- 376. INTERSECTION
Spk & W set by State
ALA090A-43
- 386. INTERSECTION
Spk & W set by State
ALA090A-43
- 396. INTERSECTION
Spk & W set by State
ALA090A-43
- 406. INTERSECTION
Spk & W set by State
ALA090A-43
- 416. INTERSECTION
Spk & W set by State
ALA090A-43
- 426. INTERSECTION
Spk & W set by State
ALA090A-43
- 436. INTERSECTION
Spk & W set by State
ALA090A-43
- 446. INTERSECTION
Spk & W set by State
ALA090A-43
- 456. INTERSECTION
Spk & W set by State
ALA090A-43
- 466. INTERSECTION
Spk & W set by State
ALA090A-43
- 476. INTERSECTION
Spk & W set by State
ALA090A-43
- 486. INTERSECTION
Spk & W set by State
ALA090A-43
- 496. INTERSECTION
Spk & W set by State
ALA090A-43
- 506. INTERSECTION
Spk & W set by State
ALA090A-43
- 516. INTERSECTION
Spk & W set by State
ALA090A-43
- 526. INTERSECTION
Spk & W set by State
ALA090A-43
- 536. INTERSECTION
Spk & W set by State
ALA090A-43
- 546. INTERSECTION
Spk & W set by State
ALA090A-43
- 556. INTERSECTION
Spk & W set by State
ALA090A-43
- 566. INTERSECTION
Spk & W set by State
ALA090A-43
- 576. INTERSECTION
Spk & W set by State
ALA090A-43
- 586. INTERSECTION
Spk & W set by State
ALA090A-43
- 596. INTERSECTION
Spk & W set by State
ALA090A-43
- 606. INTERSECTION
Spk & W set by State
ALA090A-43
- 616. INTERSECTION
Spk & W set by State
ALA090A-43
- 626. INTERSECTION
Spk & W set by State
ALA090A-43
- 636. INTERSECTION
Spk & W set by State
ALA090A-43
- 646. INTERSECTION
Spk & W set by State
ALA090A-43
- 656. INTERSECTION
Spk & W set by State
ALA090A-43
- 666. INTERSECTION
Spk & W set by State
ALA090A-43
- 676. INTERSECTION
Spk & W set by State
ALA090A-43
- 686. INTERSECTION
Spk & W set by State
ALA090A-43
- 696. INTERSECTION
Spk & W set by State
ALA090A-43
- 706. INTERSECTION
Spk & W set by State
ALA090A-43
- 716. INTERSECTION
Spk & W set by State
ALA090A-43
- 726. INTERSECTION
Spk & W set by State
ALA090A-43
- 736. INTERSECTION
Spk & W set by State
ALA090A-43
- 746. INTERSECTION
Spk & W set by State
ALA090A-43
- 756. INTERSECTION
Spk & W set by State
ALA090A-43
- 766. INTERSECTION
Spk & W set by State
ALA090A-43
- 776. INTERSECTION
Spk & W set by State
ALA090A-43
- 786. INTERSECTION
Spk & W set by State
ALA090A-43
- 796. INTERSECTION
Spk & W set by State
ALA090A-43
- 806. INTERSECTION
Spk & W set by State
ALA090A-43
- 816. INTERSECTION
Spk & W set by State
ALA090A-43
- 826. INTERSECTION
Spk & W set by State
ALA090A-43
- 836. INTERSECTION
Spk & W set by State
ALA090A-43
- 846. INTERSECTION
Spk & W set by State
ALA090A-43
- 856. INTERSECTION
Spk & W set by State
ALA090A-43
- 866. INTERSECTION
Spk & W set by State
ALA090A-43
- 876. INTERSECTION
Spk & W set by State
ALA090A-43
- 886. INTERSECTION
Spk & W set by State
ALA090A-43
- 896. INTERSECTION
Spk & W set by State
ALA090A-43
- 906. INTERSECTION
Spk & W set by State
ALA090A-43
- 916. INTERSECTION
Spk & W set by State
ALA090A-43
- 926. INTERSECTION
Spk & W set by State
ALA090A-43
- 936. INTERSECTION
Spk & W set by State
ALA090A-43
- 946. INTERSECTION
Spk & W set by State
ALA090A-43
- 956. INTERSECTION
Spk & W set by State
ALA090A-43
- 966. INTERSECTION
Spk & W set by State
ALA090A-43
- 976. INTERSECTION
Spk & W set by State
ALA090A-43
- 986. INTERSECTION
Spk & W set by State
ALA090A-43
- 996. INTERSECTION
Spk & W set by State
ALA090A-43
- 1006. INTERSECTION
Spk & W set by State
ALA090A-43

- 11. INTERSECTION
L & T set by State
A105,001-43
- 21. TRACT CORNER
2" I.P. set by Co-Surveyor
Per Tract #175-21
- 31. TRACT CORNER
2" I.P. set by R.C.E.
Per Tract #175-21
- 41. INTERSECTION
Spk & W set by State
ALA090A-43
- 51. POINT ON TANGENT
Spk & W set by Co-Surveyor
C.S.F.B. 255-10
- 61. INTERSECTION
Spk & W set by State
ALA090A-43
- 71. INTERSECTION
Spk & W set and destroyed in const. by State
ALA090A-43
- 81. POINT ON TANGENT
Spk & W set by Co-Surveyor
C.S.F.B. 255-10
- 91. INTERSECTION
Spk & W set by State
ALA090A-43
- 101. INTERSECTION
Painted & set & destroyed in const.
ALA090A-43
- 111. INTERSECTION
Spk & W set by State
ALA090A-47
- 121. POINT ON TANGENT
Spk & W set by State
ALA090A-47
- 131. INTERSECTION
Spk & W set by State
ALA090A-47
- 141. INTERSECTION
Spk & W set by State
ALA090A-47
- 151. INTERSECTION
Spk & W set by State
ALA090A-47
- 161. INTERSECTION
Spk & W set by State
ALA090A-47
- 171. INTERSECTION
Spk & W set by State
ALA090A-47
- 181. INTERSECTION
Spk & W set by State
ALA090A-47
- 191. INTERSECTION
Spk & W set by State
ALA090A-47
- 201. INTERSECTION
Spk & W set by State
ALA090A-47
- 211. INTERSECTION
Spk & W set by State
ALA090A-47
- 221. INTERSECTION
Spk & W set by State
ALA090A-47
- 231. INTERSECTION
Spk & W set by State
ALA090A-47
- 241. INTERSECTION
Spk & W set by State
ALA090A-47
- 251. INTERSECTION
Spk & W set by State
ALA090A-47
- 261. INTERSECTION
Spk & W set by State
ALA090A-47
- 271. INTERSECTION
Spk & W set by State
ALA090A-47
- 281. INTERSECTION
Spk & W set by State
ALA090A-47
- 291. INTERSECTION
Spk & W set by State
ALA090A-47
- 301. INTERSECTION
Spk & W set by State
ALA090A-47
- 311. INTERSECTION
Spk & W set by State
ALA090A-47
- 321. INTERSECTION
Spk & W set by State
ALA090A-47
- 331. INTERSECTION
Spk & W set by State
ALA090A-47
- 341. INTERSECTION
Spk & W set by State
ALA090A-47
- 351. INTERSECTION
Spk & W set by State
ALA090A-47
- 361. INTERSECTION
Spk & W set by State
ALA090A-47
- 371. INTERSECTION
Spk & W set by State
ALA090A-47
- 381. INTERSECTION
Spk & W set by State
ALA090A-47
- 391. INTERSECTION
Spk & W set by State
ALA090A-47
- 401. INTERSECTION
Spk & W set by State
ALA090A-47
- 411. INTERSECTION
Spk & W set by State
ALA090A-47
- 421. INTERSECTION
Spk & W set by State
ALA090A-47
- 431. INTERSECTION
Spk & W set by State
ALA090A-47
- 441. INTERSECTION
Spk & W set by State
ALA090A-47
- 451. INTERSECTION
Spk & W set by State
ALA090A-47
- 461. INTERSECTION
Spk & W set by State
ALA090A-47
- 471. INTERSECTION
Spk & W set by State
ALA090A-47
- 481. INTERSECTION
Spk & W set by State
ALA090A-47
- 491. INTERSECTION
Spk & W set by State
ALA090A-47
- 501. INTERSECTION
Spk & W set by State
ALA090A-47
- 511. INTERSECTION
Spk & W set by State
ALA090A-47
- 521. INTERSECTION
Spk & W set by State
ALA090A-47
- 531. INTERSECTION
Spk & W set by State
ALA090A-47
- 541. INTERSECTION
Spk & W set by State
ALA090A-47
- 551. INTERSECTION
Spk & W set by State
ALA090A-47
- 561. INTERSECTION
Spk & W set by State
ALA090A-47
- 571. INTERSECTION
Spk & W set by State
ALA090A-47
- 581. INTERSECTION
Spk & W set by State
ALA090A-47
- 591. INTERSECTION
Spk & W set by State
ALA090A-47
- 601. INTERSECTION
Spk & W set by State
ALA090A-47
- 611. INTERSECTION
Spk & W set by State
ALA090A-47
- 621. INTERSECTION
Spk & W set by State
ALA090A-47
- 631. INTERSECTION
Spk & W set by State
ALA090A-47
- 641. INTERSECTION
Spk & W set by State
ALA090A-47
- 651. INTERSECTION
Spk & W set by State
ALA090A-47
- 661. INTERSECTION
Spk & W set by State
ALA090A-47
- 671. INTERSECTION
Spk & W set by State
ALA090A-47
- 681. INTERSECTION
Spk & W set by State
ALA090A-47
- 691. INTERSECTION
Spk & W set by State
ALA090A-47
- 701. INTERSECTION
Spk & W set by State
ALA090A-47
- 711. INTERSECTION
Spk & W set by State
ALA090A-47
- 721. INTERSECTION
Spk & W set by State
ALA090A-47
- 731. INTERSECTION
Spk & W set by State
ALA090A-47
- 741. INTERSECTION
Spk & W set by State
ALA090A-47
- 751. INTERSECTION
Spk & W set by State
ALA090A-47
- 761. INTERSECTION
Spk & W set by State
ALA090A-47
- 771. INTERSECTION
Spk & W set by State
ALA090A-47
- 781. INTERSECTION
Spk & W set by State
ALA090A-47
- 791. INTERSECTION
Spk & W set by State
ALA090A-47
- 801. INTERSECTION
Spk & W set by State
ALA090A-47
- 811. INTERSECTION
Spk & W set by State
ALA090A-47
- 821. INTERSECTION
Spk & W set by State
ALA090A-47
- 831. INTERSECTION
Spk & W set by State
ALA090A-47
- 841. INTERSECTION
Spk & W set by State
ALA090A-47
- 851. INTERSECTION
Spk & W set by State
ALA090A-47
- 861. INTERSECTION
Spk & W set by State
ALA090A-47
- 871. INTERSECTION
Spk & W set by State
ALA090A-47
- 881. INTERSECTION
Spk & W set by State
ALA090A-47
- 891. INTERSECTION
Spk & W set by State
ALA090A-47
- 901. INTERSECTION
Spk & W set by State
ALA090A-47
- 911. INTERSECTION
Spk & W set by State
ALA090A-47
- 921. INTERSECTION
Spk & W set by State
ALA090A-47
- 931. INTERSECTION
Spk & W set by State
ALA090A-47
- 941. INTERSECTION
Spk & W set by State
ALA090A-47
- 951. INTERSECTION
Spk & W set by State
ALA090A-47
- 961. INTERSECTION
Spk & W set by State
ALA090A-47
- 971. INTERSECTION
Spk & W set by State
ALA090A-47
- 981. INTERSECTION
Spk & W set by State
ALA090A-47
- 991. INTERSECTION
Spk & W set by State
ALA090A-47
- 1001. INTERSECTION
Spk & W set by State
ALA090A-47

SEE UPPER RIGHT CORNER

