

N 4,088,000

N 4,088,000

N 4,087,300

N 4,087,000

E 4,282,000

E 4,282,000

E 4,282,000

E 4,282,000

E 4,282,000

E 4,282,000

E 4,282,000

E 4,282,000

E 4,282,000

E 4,282,000

SEE MF 4046-1

Quarter Section Corner
Set on N 1/4 from Rwy 3144
ALADIF-0034
T.R. from N.M.R. by L.A. Co. 10/25/50

CENTER OF SECTION
Set on S 1/4 from Rwy 3144
State ALADIF-0034
S 1/4 from County
R.O.F.B. 0624-506, 507

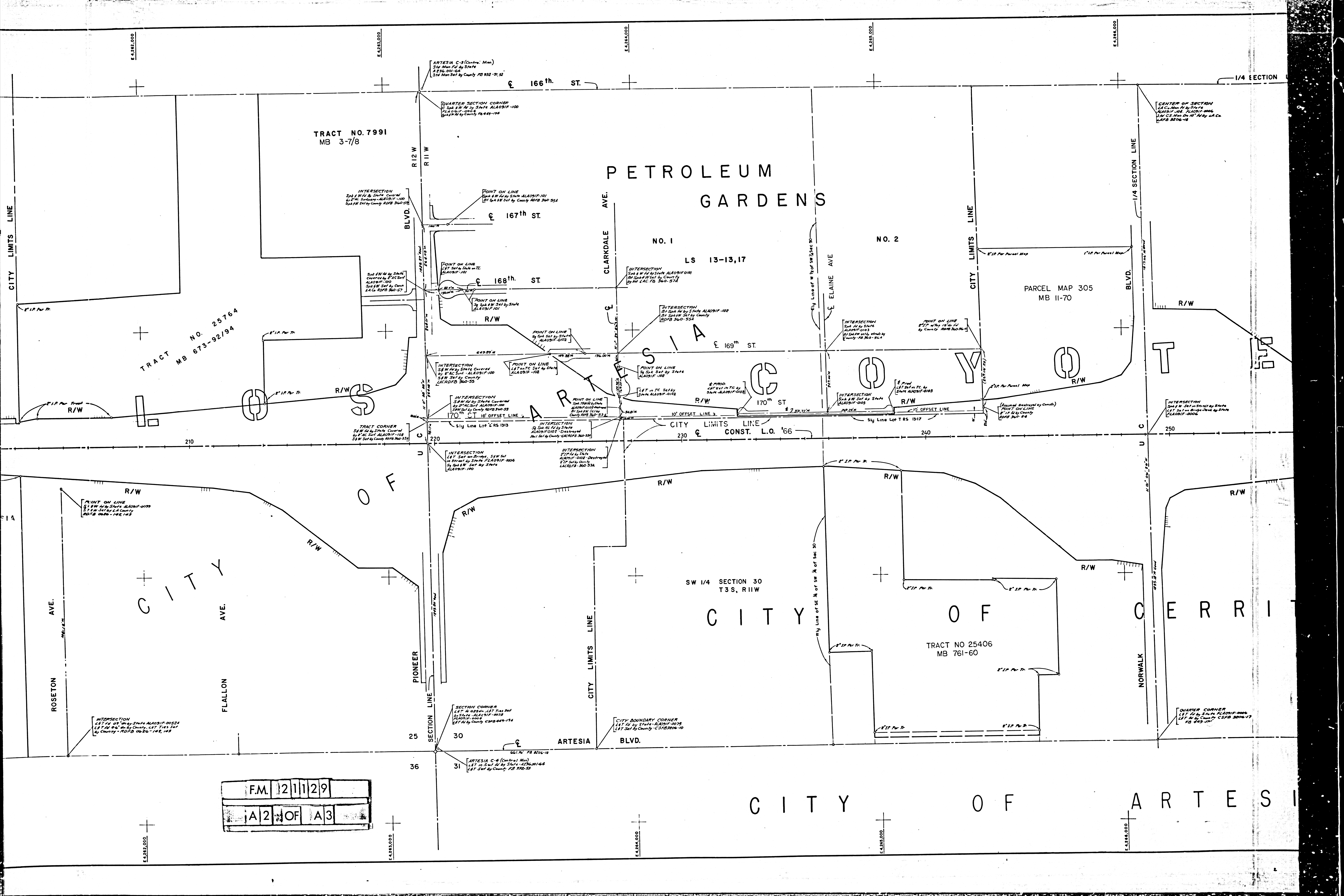
INTERSECTION
Set on Rwy 3210 Street by
State ALADIF-0034
L&T Set on County State

SECTION CORNER
Set on N 1/4 by State ALADIF-0034
R.O.F.B. 0034
Set on S 1/4 by County 10/25/50

Quarter Section Corner
Set on S 1/4 from Rwy 3144
ALADIF-0034
L.A. Co. from Rwy 3144
10/25/50

INTERSECTION
Set on S 1/4 from State ALADIF-0034
L&T Set on County, L&T Ties Set
by County - R.O.F.B. 0626-142, 143

F.M. 21129
A1 OF A3



TRACT NO. 7991
MB 3-7/8

PETROLEUM
GARDENS

NO. 1
LS 13-13,17

NO. 2

PARCEL MAP 305
MB 11-70

TRACT NO. 25764
MB 673-92/94

OF

SW 1/4 SECTION 30
T3S, R11W

CITY

OF

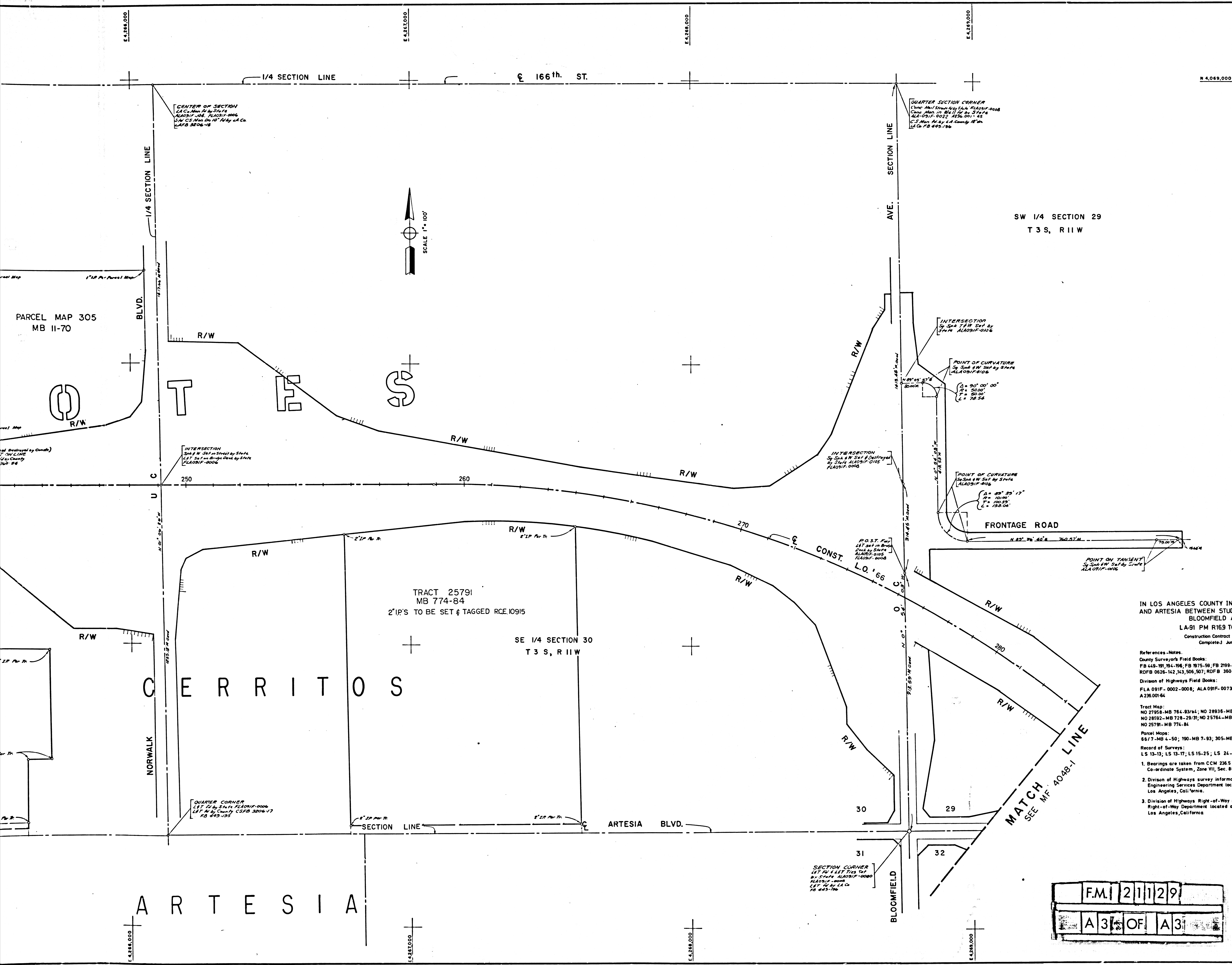
TRACT NO 25406
MB 761-60

CERRI

CITY OF ARTESIA

F.M. 121129
A2 OF A3

DISTRICT COUNTY ROUTE POST MILES TOTAL PROJECT SHEET TOTAL
 07 LA 91/600 R169-R194 1 1
 STATE OF CALIFORNIA
 TRANSPORTATION AGENCY
 DEPARTMENT OF PUBLIC WORKS
 DIVISION OF HIGHWAYS
 MONUMENTATION MAP
 NO. MF-4047-1
 George Wofford *George Wofford*
 C.E. 6961 Deputy District Engineer
 LOS ANGELES COUNTY FILE NO.



IN LOS ANGELES COUNTY IN CITIES OF CERRITOS
 AND ARTESIA BETWEEN STUDEBAKER ROAD AND
 BLOOMFIELD AVENUE
 LA-91 PM R169 TO R 194
 Construction Contract 07 009534
 Complete June 21, 1968

- References Notes:
- County Surveyors Field Books:
 FB 449-191, 194-196, FB 1975-59, FB 1979-29, F B 832-51-53, F B 3236-10, 18
 RDB 0626-142, 143, 506, 507; RDB B 380-53, 53A, 54, 55A, 56A, 57, 57A, 59
- Division of Highways Field Books:
 FLA 091F-0002-0008; ALA 091F-0073 0080 0045 0095 0106
 A236.00184
- Tract Map:
 NO 27958-MB 764-93/94; NO 28936-MB 761-82; NO 26740-MB 712-5/6;
 NO 28592-MB 728-29/31; NO 25764-MB 673-92/94; NO 25406-MB 761-80
 NO 25791-MB 774-84
- Parcel Maps:
 6617-MB 4-50; 190-MB 7-93; 305-MB 11-70
- Record of Surveys:
 LS 13-13; LS 13-17; LS 15-25; LS 24-28
- Bearings are taken from CCM 236.5 and are based on the California Co-ordinate System, Zone VII, Sec. 8809 of the Public Resources Code.
 - Division of Highways survey information is available from the Engineering Services Department located at 550 South Vermont Ave. Los Angeles, California.
 - Division of Highways Right-of-Way information is available from the Right-of-Way Department located at 120 South Spring St. Los Angeles, California.

F.M. | 211 | 29
 A 3 OF A 3

Chief of Party	Date
D DURENSKY	
Deleter	Drawn by
K MOORE	W. J. LANCE
Supervisor	Compiled by
J MUSSENDER	K. MOORE
Project Engineer	
W. J. STEELF	5/68
District Survey Engineer	
W. C. SORLIE	5/68
Approval recommended by	
Assistant District Engineer	
K. E. M'KEAN	5/68