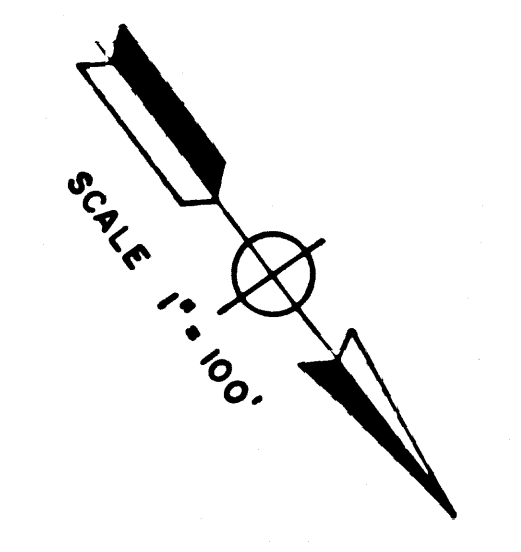


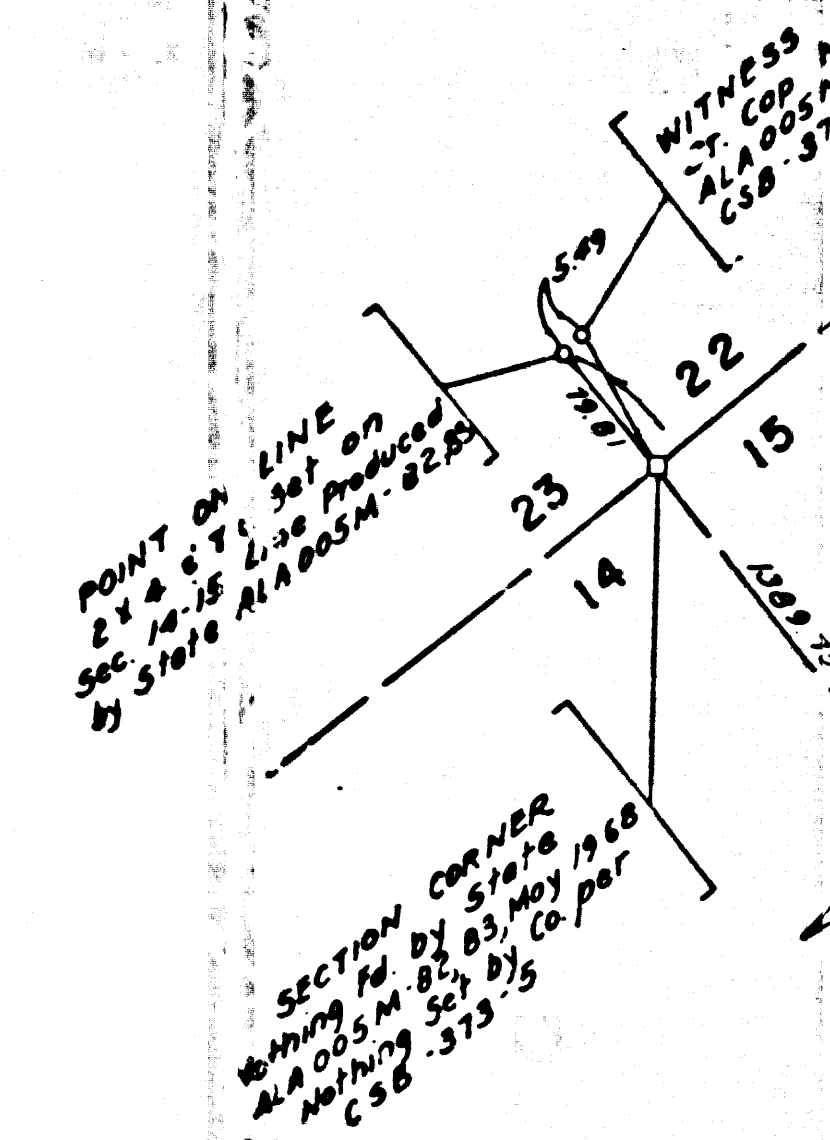
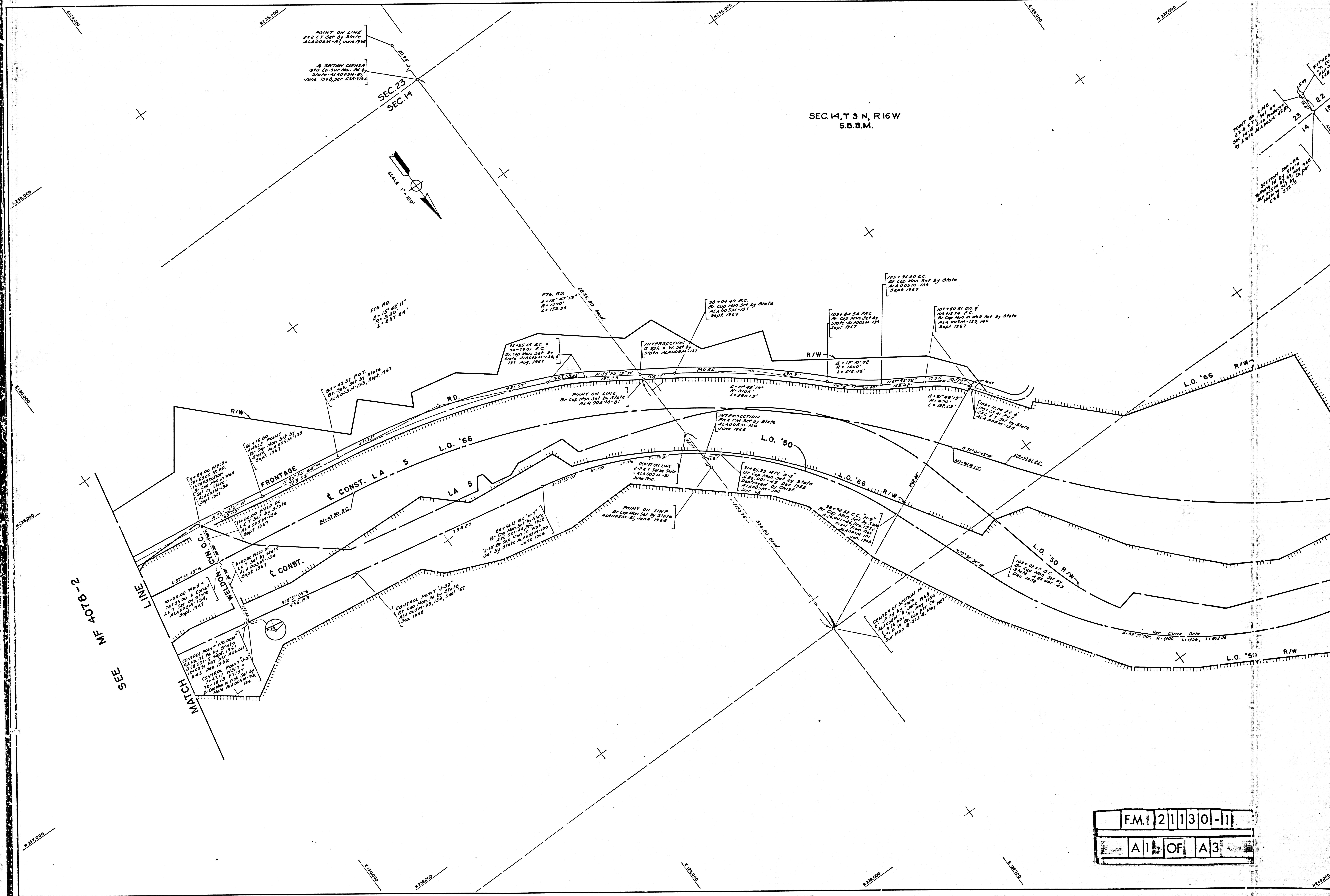
SEC. 14, T 3 N, R 16 W
S.B.B.M.

SEC. 23
SEC. 14



SEE ME 407B-2
MATCH

F.M. 21130-11
A15 OF A3



6W

T3 N, R 16 W, SEC. 15
S.B.M.

108+36.00 E.C.
By Cap. Mon. Set by State
ALA 00574-159
Sept. 1967

107+58.51 B.C.
109+17.74 E.C.
By Cap. Mon. in Well Set by State
ALA 00574-159, 160
Sept. 1967

105+17.74 E.C.
107+15.21 E.C.
By Cap. Mon. Set by State
ALA 00574-158

109+11.81 B.C.
By Cap. Mon. Set by State
ALA 00574-158

103+08.43 B.C.
By Cap. Mon. Set by State
ALA 00574-158, 159
Dec. 1952

117+59.36 E.C.
By Cap. Mon. Set by State
ALA 00574-150, 151
Dec. 1952

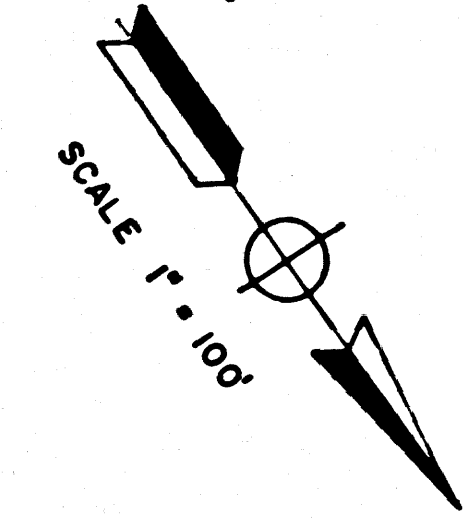
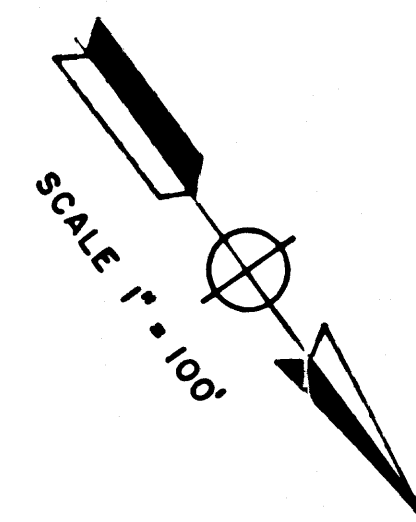
120+38.45 B.C.
By Cap. Mon. Set by State
ALA 00574-150
Dec. 1952

126+79.44 E.C.
By Cap. Mon. Set by State
ALA 00574-152
Dec. 1952

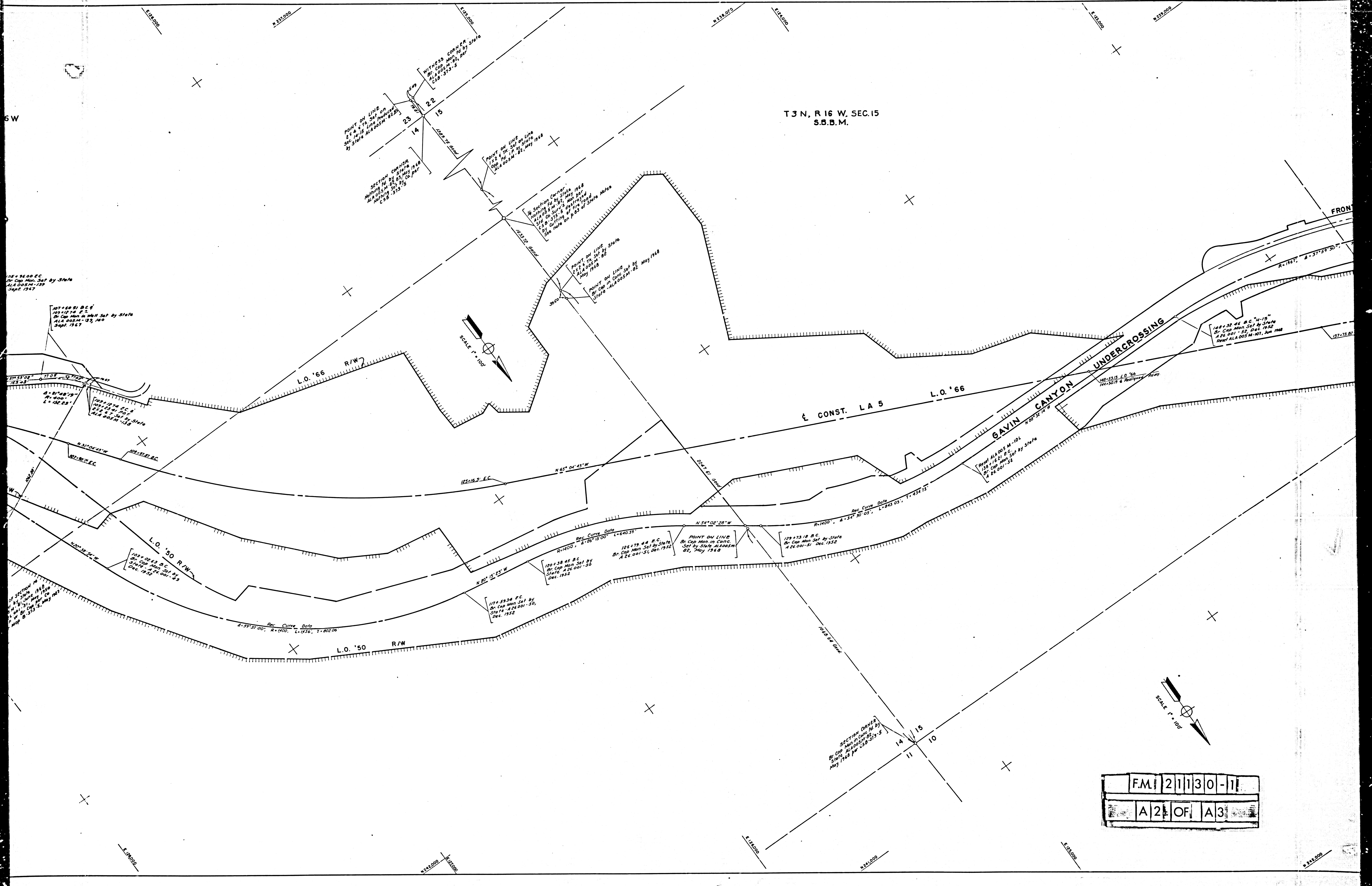
129+73.18 B.C.
By Cap. Mon. Set by State
ALA 00574-152
Dec. 1952

128+32.45 B.C. "4-15"
By Cap. Mon. Set by State
ALA 00574-152, 153
Dec. 1952

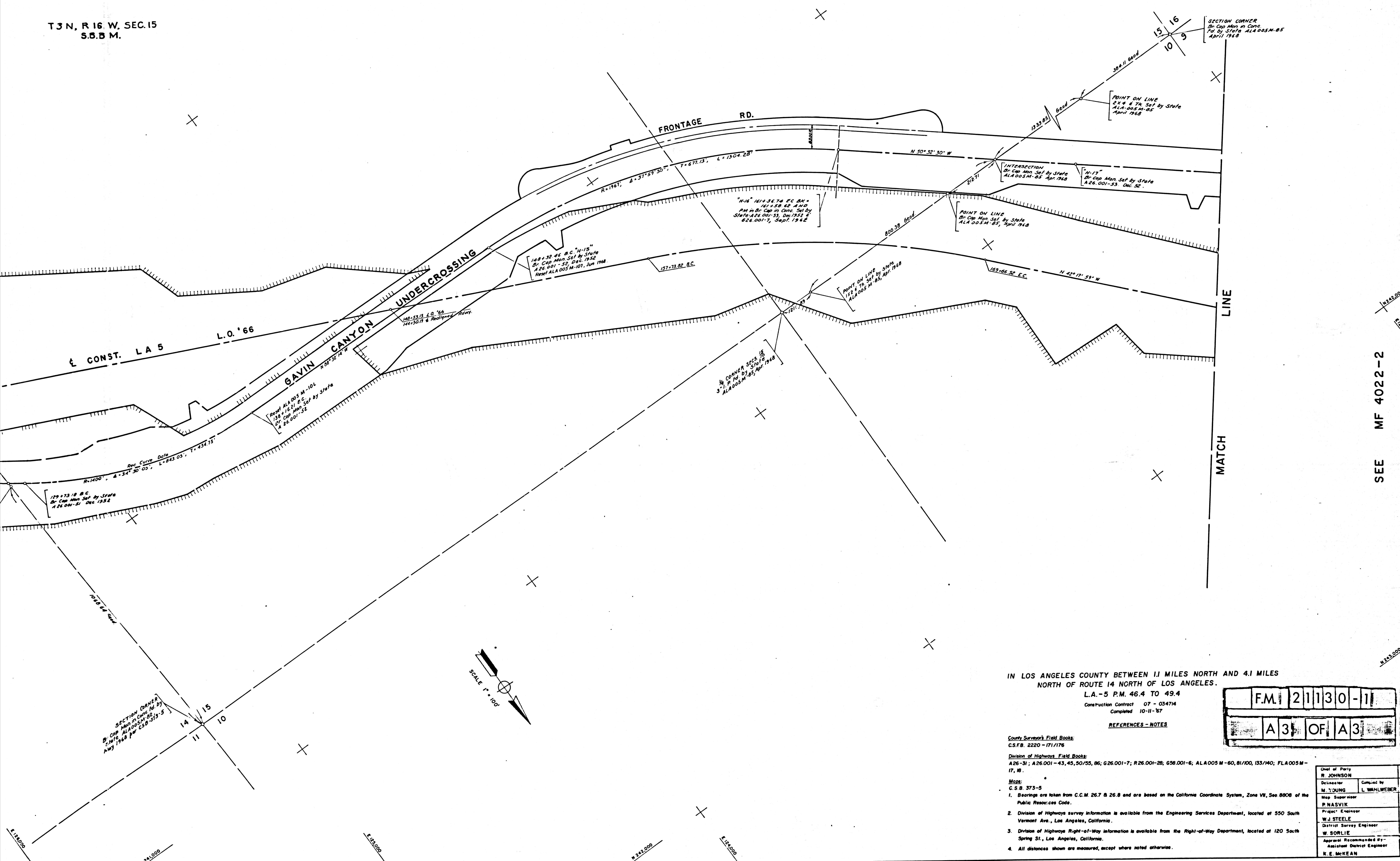
127+73.62



F.M. 21130-1
A2 OF A3



T 3 N, R 16 W, SEC. 15
 S.B.M.



SEE MF 4022-2

IN LOS ANGELES COUNTY BETWEEN 1.1 MILES NORTH AND 4.1 MILES
 NORTH OF ROUTE 14 NORTH OF LOS ANGELES.

L.A.-5 P.M. 46.4 TO 49.4
 Construction Contract 07 - 034714
 Completed 10-11-67

F.M.	21130-11
A3	OF A3

REFERENCES - NOTES

- County Surveyor's Field Books:
 C.S.F.B. 2220 - 171/176
- Division of Highways Field Books:
 A26-31; A26.001-43, 45, 50/55, 86; G26.001-7; R26.001-28; G58.001-6; ALA005 M-60, 81/100, 133/140; FLA005 M-17, 18
- Map:
 C.S.B. 373-5
- Bearings are taken from C.C.M. 26.7 & 26.8 and are based on the California Coordinate System, Zone VII, See 8006 of the Public Resources Code.
 - Division of Highways survey information is available from the Engineering Services Department, located at 550 South Vermont Ave., Los Angeles, California.
 - Division of Highway Right-of-Way information is available from the Right-of-Way Department, located at 120 South Spring St., Los Angeles, California.
 - All distances shown are measured, except where noted otherwise.

Chief of Party	Checked by	Date
R. JOHNSON	L. WÄHLWEBER	6/69
Deviator	M. JOHNS	6/69
Map Supervisor	P. HASVIK	6/69
Project Engineer	W.J. STEELE	6/69
District Survey Engineer	W. SORLIE	6/69
Approval Recommended by - Assistant District Engineer	K.E. MCKEAN	6/69

