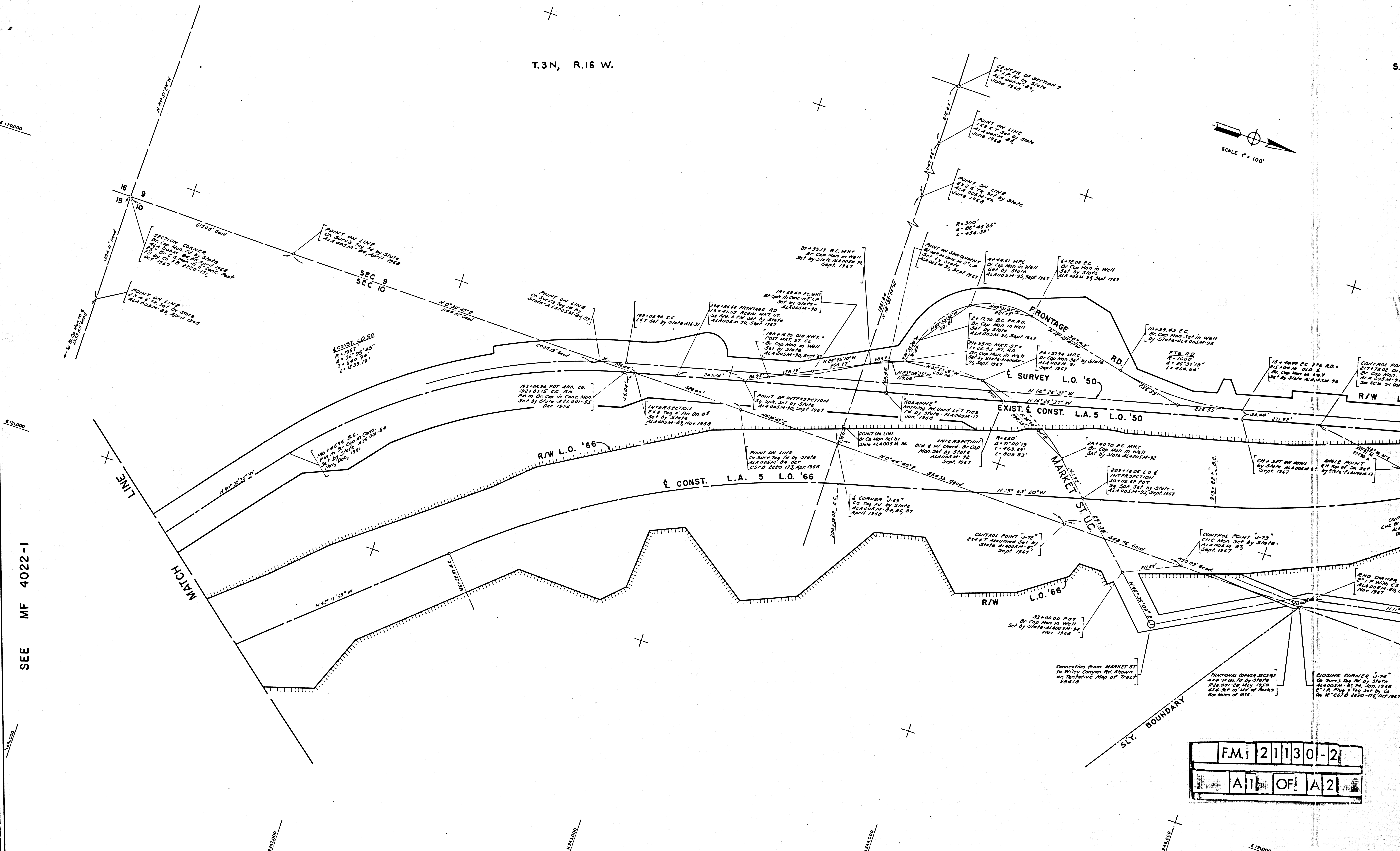
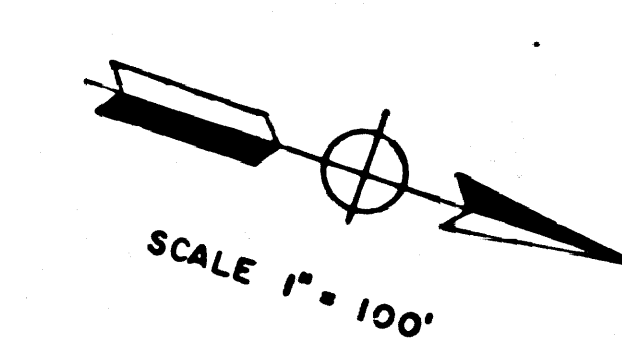


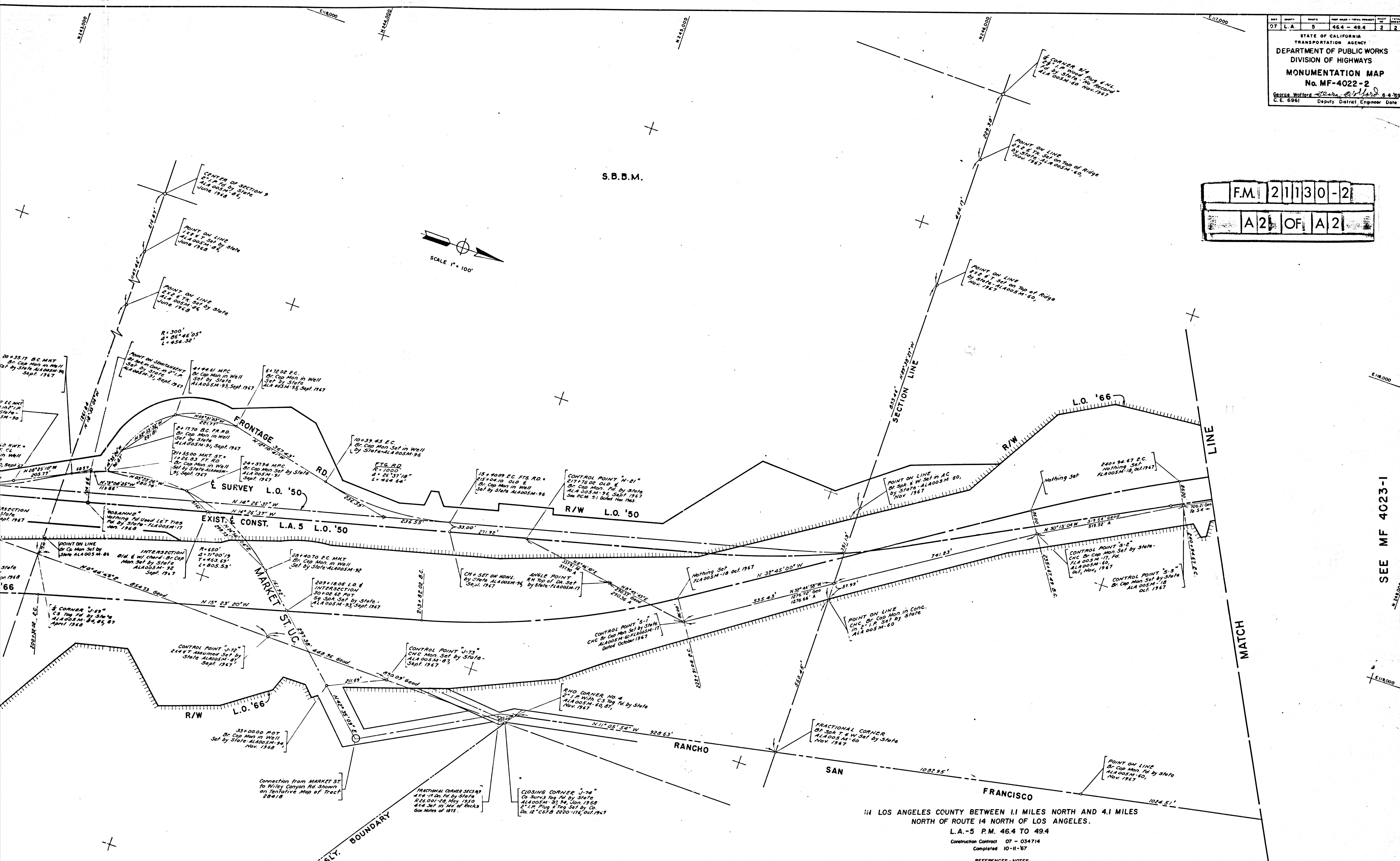
T.3N, R.16 W.



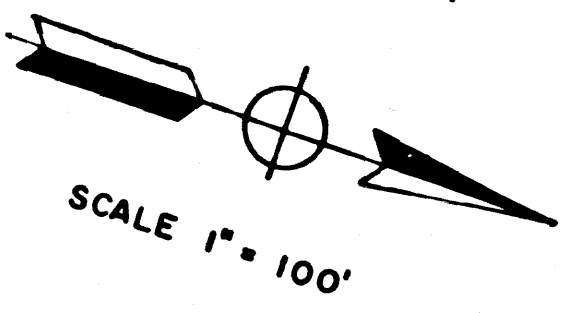
SEE MF 4022-1

F.M. 21130-2
A1 OF A2

F.M. 21130-2
 A2 OF A2



S.B.B.M.



SEE MF 4023-1

IN LOS ANGELES COUNTY BETWEEN 1.1 MILES NORTH AND 4.1 MILES NORTH OF ROUTE 14 NORTH OF LOS ANGELES.
 L.A.-5 P.M. 46.4 TO 49.4

Construction Contract 07 - 034714
 Completed 10-11-57

- REFERENCES - NOTES
1. Bearings are taken from C.C.M. 26.7 & 26.8 and are based on the California Coordinate System, Zone VII, Sec. 8808 of the Public Resources Code.
 2. Division of Highways survey information is available from the Engineering Services Department, located at 550 South Vermont Ave., Los Angeles, California.
 3. Division of Highways Right-of-Way information is available from the Right-of-Way Department, located at 120 South Spring St., Los Angeles, California.
 4. All distances shown are measured, except where noted otherwise.

Chief of Party	Checked by	Date
R. JOHNSON	L. WAHLWEBER	6/59
Delineator	Map Supervisor	
M. YOUNG	P. MASVIK	6/59
Project Engineer	District Survey Engineer	
W. STEELE	W. SORLIE	6/59
Approved/Recommended By - Assistant District Engineer	C. E. MCKEAN	6/59