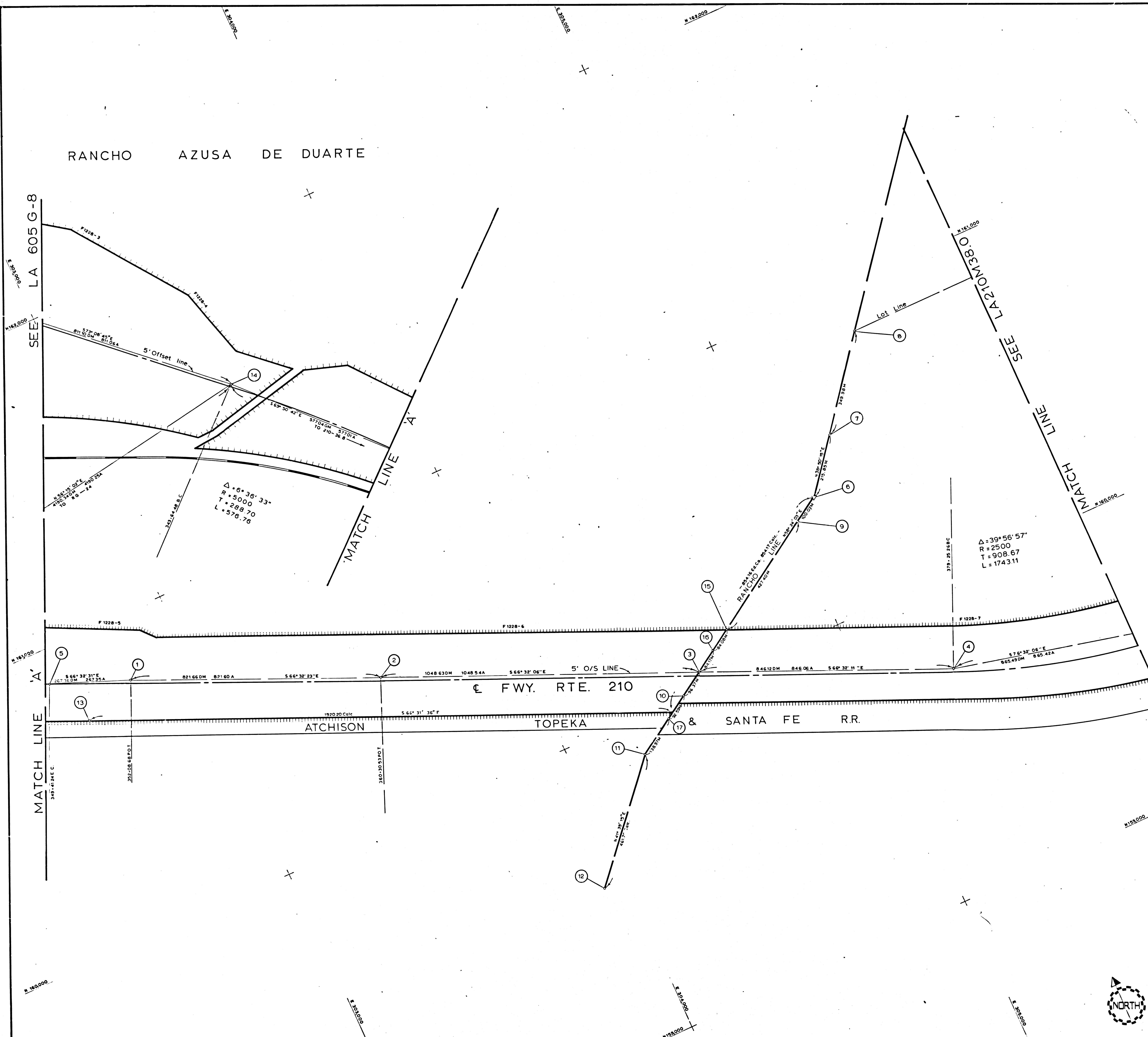


RANCHO AZUSA DE DUARTE



NO.	DESCRIPTION	REFERENCE	NORTHING	EASTING
1	FD L & T	FLA210E-21		
2	FD BR CAP IN 2" IP	FLA210E-21		
3	SET BR CAP IN 2" IP	FLA210E-21		
4	SET BR CAP IN 2" IP	FLA210E-22		
5	SET BR CAP IN 2" IP	FLA210E-37		
6	FD STD LA CO MM	ANG. 001-37		
7	FD 2x2	FR370-110		
8	SET 2x2 RY (M)	FR370-110		
9	FD BR CAP IN 2" IP	ALA210E-320		
10	SET L & T	ALA210E-320		
11	PESET 2x2	ALA210E-320		
12	NOTHING SET			
13	FD LA CO MM	A333,001-7		
14	FD CNI BR CAP MM	FLA210E-21		
15	FD BR CAP MM	ALA210E-320		
16	SET L & T	ALA210E-320		
17	FD NAIL 1 1/2 TIE	ALA210E-320		

F.M. 21135-1

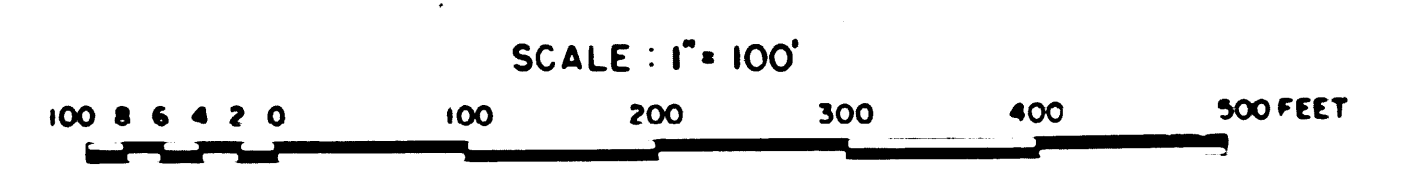
LEGEND

⊙	LOS ANGELES COUNTY SURVEY CONTROL POINTS
△	PRELIMINARY CONTROL POINTS
○	MONUMENTS SET OR FOUND, ALSO B.C.'S AND E.C.'S
△	ANGLE POINTS
◇	SECTION CORNERS
M	GROUND DISTANCE MEASURED WITH CHAIN
DM	GROUND DISTANCE MEASURED WITH DISTOMAT
GM	GROUND DISTANCE MEASURED WITH GEODIMETER
A	ADJUSTED GRID DISTANCE
Rec.	RECORDED VALUE AS ESTABLISHED PREVIOUSLY

NOTE:
 1. BEARINGS ARE BASED ON THE CALIFORNIA COORDINATE SYSTEM, DIVISION 8, SECTION 8809 OF THE 1953 PUBLIC RESOURCES CODE, AND ARE DERIVED FROM THE 1971 VALUE OF THE LOS ANGELES COUNTY SURVEY CONTROL POINTS AS SHOWN.
 REFERENCE:
 2. DIVISION OF HIGHWAYS SURVEY INFORMATION IS AVAILABLE FROM THE ENGINEERING SERVICES DEPARTMENT, LOS ANGELES, CALIFORNIA.
 3. DIVISION OF HIGHWAYS RIGHT OF WAY INFORMATION IS AVAILABLE FROM THE RIGHT OF WAY DEPARTMENT, LOS ANGELES, CALIFORNIA.
 4. STATIONING SHOWN ON THIS MAP IS FOR REFERENCE ONLY.

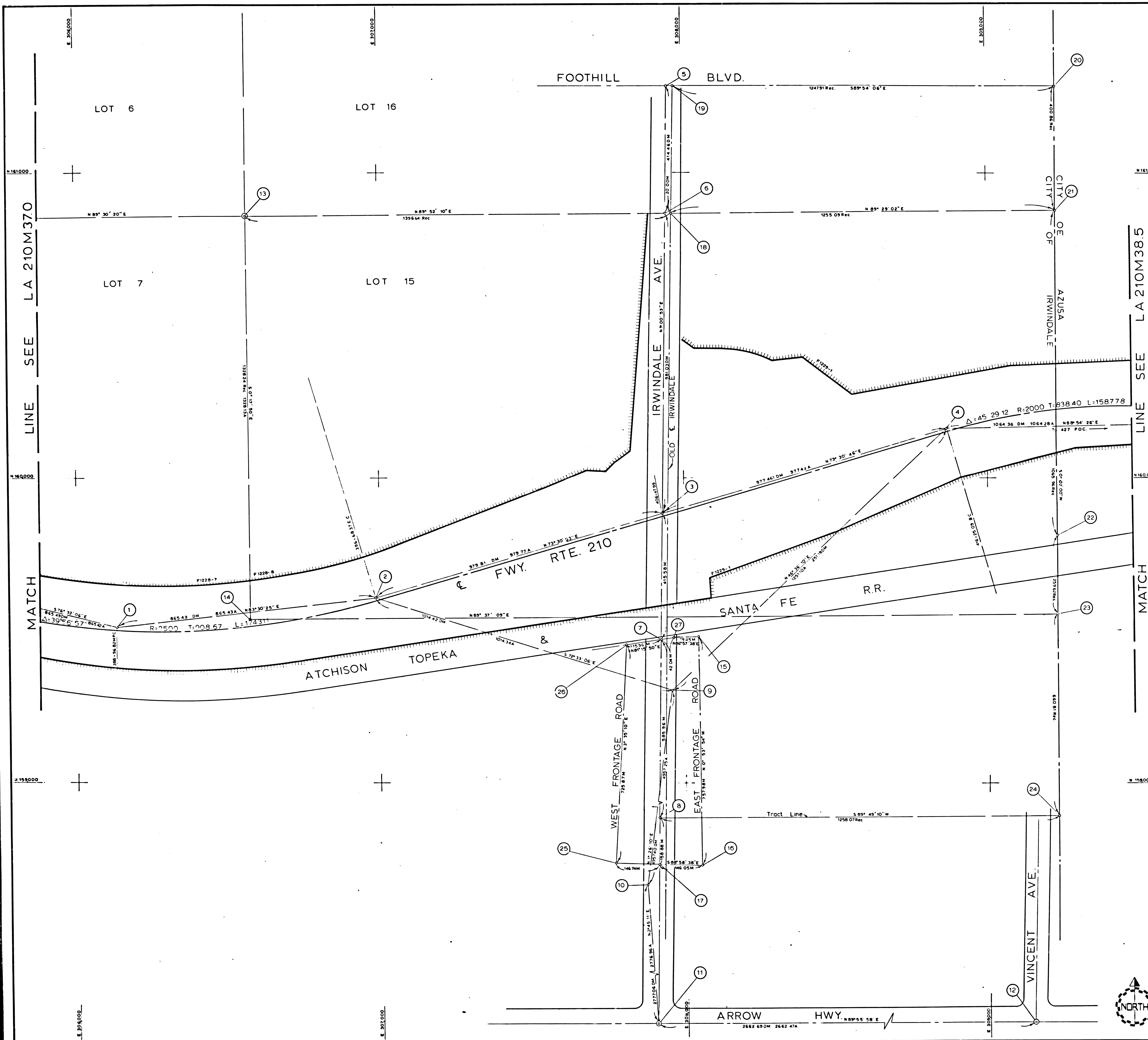
IN LOS ANGELES COUNTY

CONSTRUCTION CONTRACT NO. 033234
 COMPLETION DATE: MARCH 19, 1969
 THESE MAPS SUPERSEDES
 FM 21135-1 & FM 21135-2



LOS ANGELES COUNTY FILE NO.

DISTRICT	COUNTY	ROUTE	POST MILES - TOTAL PROJECT	SHEET NO.	TOTAL SHEETS	Chief of Party
07	LA	210	36.8 / 35.9	1	4	C. GOON
STATE OF CALIFORNIA DIVISION OF HIGHWAYS						
MONUMENTATION MAP			JUN CALIFORNIA COORDINATE SYSTEM - ZONE 7		Map No. LA 210M 370	
C.E. TISSOT District Survey Engineer			APRIL 1974		Date	
Checked by			Checked by		Checked by	
L. PRICE			J. KRAS		L. PRICE	
Project Engineer			Survey District Supervisor		D. EBERLY	



NO.	DESCRIPTION	REFERENCE
1	SET BR CAP IN 2" IP	FLA210E-22
2	SET BR CAP IN 2" IP	FLA210E-22
3	SET BR CAP IN 2" IP	FLA210E-23
4	SET BR CAP IN 2" IP	FLA210E-23
5	FD SPK	ALA210E207
6	SET S & W	ALA210E324
7	SET SSN ON BR DECK	ALA210E323
8	SET S & W	ALA210E322
9	SET L & T	73-027-006
10	FD CO ENG TAG	73-027-005
11	CO SURVEY CONTROL STA	73-027-004
12	CO SURVEY CONTROL STA	73-027-009
13	FD BR CAP MON	ALA210E-205
14	FD 3/4" IP	ALA210E-205
15	SET SPK R W	ALA210E-325
16	SET BOAT SPK	ALA210E-325
17	SET SPK R W	ALA210E-325
18	SET SPK R W	ALA210E-324
19	FD SPK	ALA210E-324
20	FD SPK, T & W	AN6, 0911-3
21	FD 3/4" IP	ALA210E-326
22	3/4" IP R TAG	CS82E4N-3
23	3/4" IP R TAG	CS82E4N-3
24	SET 2" IP	MP161-50
25	SET BR CAP IN 2" IP	ALA210E-325
26	SET SPK R W	ALA210E-325
27	SET SPK R W	ALA210E-325

F.M. 21135-2

LEGEND

⊙	LOS ANGELES COUNTY SURVEY CONTROL POINTS
△	PRELIMINARY CONTROL POINTS
○	MONUMENTS SET OR FOUND, ALSO B.C.S. AND F.C.S.
◇	ANGLE POINTS
◆	SECTION CORNERS
M	GROUND DISTANCE MEASURED WITH CHAIN
DM	GROUND DISTANCE MEASURED WITH DISTOMAT
GM	GROUND DISTANCE MEASURED WITH GEODIMETER
A	ADJUSTED GRID DISTANCE
Rec	RECORDED VALUE AS ESTABLISHED PREVIOUSLY

NOTE

- BEARINGS ARE BASED ON THE CALIFORNIA COORDINATE SYSTEM, DIVISION 8, SECTION 8000 OF THE 1953 PUBLIC RESOURCES CODE, AND ARE DERIVED FROM THE 1971 VALUE OF THE LOS ANGELES COUNTY SURVEY CONTROL POINTS AS SHOWN.
- DIVISION OF HIGHWAYS SURVEY INFORMATION IS AVAILABLE FROM THE ENGINEERING SERVICES DEPARTMENT, LOS ANGELES, CALIFORNIA.
- DIVISION OF HIGHWAYS RIGHT OF WAY INFORMATION IS AVAILABLE FROM THE RIGHT OF WAY DEPARTMENT, LOS ANGELES, CALIFORNIA.
- STATIONING SHOWN ON THIS MAP IS FOR REFERENCE ONLY.

IN LOS ANGELES COUNTY

CONSTRUCTION CONTRACT NO. 033234
 COMPLETION DATE: MARCH 19, 1969
 THESE MAPS SUPERSEDES
 FM 21135-1 & FM 21135-2

SCALE: 1" = 100'

100 200 300 400 500 FEET

LOS ANGELES COUNTY FILE NO.

DISTRICT COUNTY ROUTE POST MILES - TOTAL PROJECT	NO. SHEETS	DATE OF PART
07 LA 210 16.8 / 39.9	2 / 4	C. GOON
STATE OF CALIFORNIA DIVISION OF HIGHWAYS	PROJECT ENGINEER	DESIGNED BY
	L. PRICE	J. KRAS
MONUMENTATION MAP	PROJECT ENGINEER	DESIGNED BY
DATUM CALIFORNIA COORDINATE SYSTEM - ZONE 7	J. KRAS	L. PRICE
MAP NO. LA 210M38.0	SURVEY OFFICE SUPERVISOR	D. EBERLY
DATE	DATE	
APRIL 1974		
C.E. 16506 District Survey Engineer		

FM 21135-2

NO.	DESCRIPTION	REFERENCE
1	SET BR CAP IN 2" IP	FLA210E-0024
2	SET BR CAP IN 2" IP	FLA210E-0024
3	SET BR CAP IN 2" IP	FLA210E-0025
4	SET BR CAP IN 2" IP	FLA210E-0026
5	SET BR CAP IN 2" IP	FLA210E-0026
6	SET BR CAP IN 2" IP	FLA210E-0027
7	S & W	ALA210E-327
8	SET S & W	ALA210E-328
9	SET S & W	ALA210E-328
10	FD C MAIL	ALA210E-329
11	SET S & W	ALA210E-329
12	SET S & W	ALA210E-329
13	SET S & W	ANG.001-56
14	FD N & T	ANG.001-56
15	S & W	ALA210E-330
16	S & W	ALA210E-330
17	FD PK MAIL	ANG.001-56
18	FD SPK	ANG.001-45
19	FD "H" P H P M'S	ANG.001-56
20	SET SPK R W	FLA210E-25
21	SET SPK R W	ALA210E-331
22	SFT SPK A W	ALA210E-328

F.M. 21135-3

LEGEND

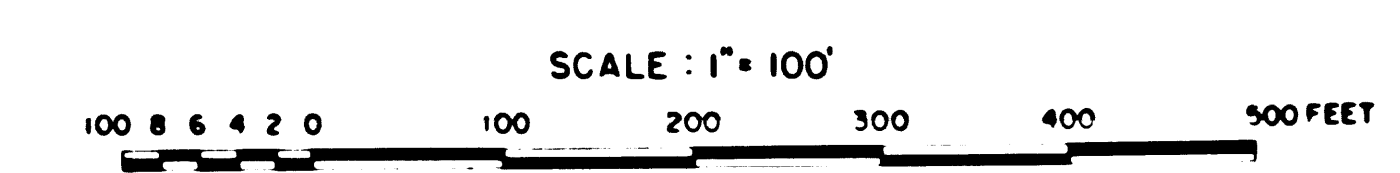
⊙	LOS ANGELES COUNTY SURVEY CONTROL POINTS
△	PRELIMINARY CONTROL POINTS
○	MONUMENTS SET OR FOUND, A, SO B C'S AND E C'S
△	ANGLE POINTS
◇	SECTION CORNERS
M	GROUND DISTANCE MEASURED WITH CHAIN
DM	GROUND DISTANCE MEASURED WITH DISTOMAT
GM	GROUND DISTANCE MEASURED WITH GEODIMETER
A	ADJUSTED GRID DISTANCE
Rec.	RECORDED VALUE AS ESTABLISHED PREVIOUSLY

NOTE

- BEARINGS ARE BASED ON THE CALIFORNIA COORDINATE SYSTEM, DIVISION 8, SECTION 8009 OF THE 1953 PUBLIC RESOURCES CODE, AND ARE DERIVED FROM THE 1971 VALUE OF THE LOS ANGELES COUNTY SURVEY CONTROL POINTS AS SHOWN.
- DIVISION OF HIGHWAYS SURVEY INFORMATION IS AVAILABLE FROM THE ENGINEERING SERVICES DEPARTMENT, LOS ANGELES, CALIFORNIA.
- DIVISION OF HIGHWAYS RIGHT OF WAY INFORMATION IS AVAILABLE FROM THE RIGHT OF WAY DEPARTMENT, LOS ANGELES, CALIFORNIA.
- STATIONING SHOWN ON THIS MAP IS FOR REFERENCE ONLY.

IN LOS ANGELES COUNTY

CONSTRUCTION CONTRACT NO. 033234
 COMPLETION DATE: MARCH 19, 1969
 THESE MAPS SUPERSEDES
 FM 21135-1 & FM 21135-2



LOS ANGELES COUNTY FILE NO.

DISTRICT	COUNTY	ROUTE	POST MILES - TOTAL PROJECT	PROJECT NO.	SECTION NO.	Sheet of Party
07	LA	210	36.8 / 35.9	3	4	C. GOON

STATE OF CALIFORNIA DIVISION OF HIGHWAYS SURVEYS

MONUMENTATION MAP

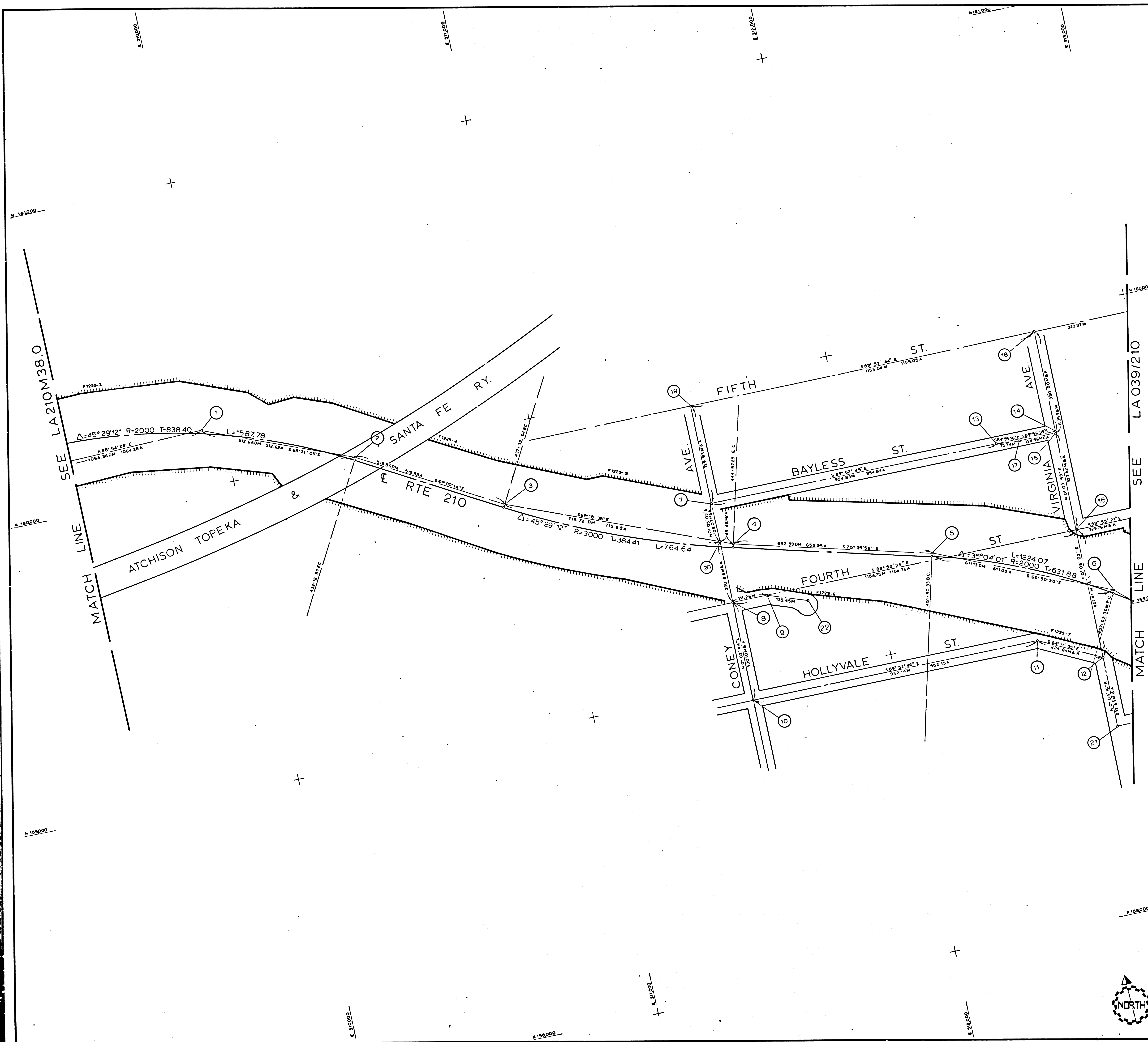
DRAWN CALIFORNIA COORDINATE SYSTEM - ZONE 7

MAP NO. LA 210M38.5

Surveyed by: J. KRAS, L. PRICE

Checked by: D. EBERLY

DATE: APRIL 1974





NO.	DESCRIPTION	REFERENCE
1	SET BR CAP 1 1/2" IP	FLA210E-27
2	SET L & T IN BR DECK	FLA210E-28
3	SET BR CAP 1 1/2" IP	FLA210E-29
4	SET BR CAP 1 1/2" IP	FLA210E-29
5	SET SSH IN BR DECK	FLA210E-29
6	SET SSH IN BR DECK	FLA210E-30
7	SET S & W	ALA210E-334
8	SET S & W	ALA210E-334
9	FD C MAIL	ALA210E-334
10	SET S & W	ALA210E-337
11	SET S & W	ALA210E-335
12	SET S & W	ALA210E-336
13	FD MAIL	ALA210E-336
14	SET L & T	ALA210E-338
15	SET S & W	ALA210E-338
16	SET S & W	ALA210E-334
17	SET S & W	ALA210E-213
18	FD 4 C MAIL STRADS	ALA210E-339
19	FD S & W	ALA210E-214
20	SET 2x2 & S & W	ALA210E-215
21	FD TYPE B MON	ALA210E-215
22	FD SSH IN BR DECK	FLA210F-56
23	FD DOM BR CAP MON	FLA210F-56
24	SET S & W	ALA210E-343
25	SET S & W	ALA210E-342
26	SET S & W	ALA210E-341
27	SET S & W	ALA210E-341
28	SET S & W	ALA210E-341
29	SET S & W	ALA210E-340
30	FD RR SPK	ALA210E-214
31	FD RR SPK	ALA210E-340
32	FD 2x2 & T	ALA210E-338
33	FD SS MAIL	73-027-13
34	FD LA CO MON	73-027-12
35	FD SPK & W	73-027-11
36	SET SPK & W	ALA210F-331
37	FD SPK & W	ALA210E-339
38	SET SPK & W	ALA210F-339
39	NOTHING FD	ALA210F-211
40	FD C MAIL	ALA210E-211
41	FD BT SPK & W	ALA210E-343
42	FD MON	ALA210E-37
43	FD TYPE 'A' MON	ALA210E-37
45	FD SPK & T	A46 001-78 DESTROYED

F.M. 21135-4

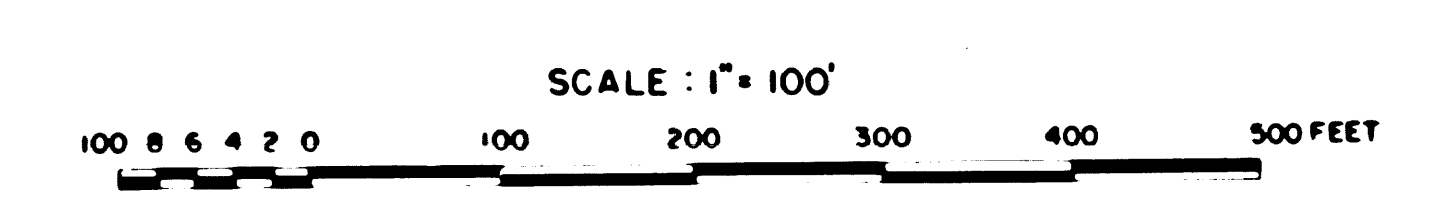
LEGEND

⊙	LOS ANGELES COUNTY SURVEY CONTROL POINTS
△	PRELIMINARY CONTROL POINTS
○	MONUMENTS SET OR FOUND, ALSO B.C.'S AND E.C.'S
△	ANGLE POINTS
◇	SECTION CORNERS
M	GROUND DISTANCE MEASURED WITH CHAIN
DM	GROUND DISTANCE MEASURED WITH DISTOMAT
GM	GROUND DISTANCE MEASURED WITH GEODIMETER
A	ADJUSTED GRID DISTANCE
Rec.	RECORDED VALUE AS ESTABLISHED PREVIOUSLY

NOTE
 1. BEARINGS ARE BASED ON THE CALIFORNIA COORDINATE SYSTEM, DIVISION 8, SECTION 8009 OF THE 1953 PUBLIC RESOURCES CODE, AND ARE DERIVED FROM THE 1911 VALUE OF THE LOS ANGELES COUNTY SURVEY CONTROL POINTS AS SHOWN.
 2. DIVISION OF HIGHWAYS SURVEY INFORMATION IS AVAILABLE FROM THE ENGINEERING SERVICES DEPARTMENT, LOS ANGELES, CALIFORNIA.
 3. DIVISION OF HIGHWAYS RIGHT OF WAY INFORMATION IS AVAILABLE FROM THE RIGHT OF WAY DEPARTMENT, LOS ANGELES, CALIFORNIA.
 4. STATIONING SHOWN ON THIS MAP IS FOR REFERENCE ONLY.

IN LOS ANGELES COUNTY

CONSTRUCTION CONTRACT NO. 033234
 COMPLETION DATE: MARCH 19, 1969
 THESE MAPS SUPERSEDES
 FM 21135-1 & FM 21135-2



LOS ANGELES COUNTY FILE NO.

DISTRICT	COUNTY	ROUTE	POST MILES - TOTAL PROJECT	SHEET NO.	TOTAL SHEETS	Drawn by
07	LA	210	36 0.7 39.3	4	4	C. GOON

STATE OF CALIFORNIA DIVISION OF HIGHWAYS SURVEYS
 MONUMENTATION MAP
 CALIFORNIA COORDINATE SYSTEM - ZONE 7
 MAP NO. LA 210/39

Checked by	Drawn by
L. PRICE	J. KRAS
Reviewed by	Checked by
J. KRAS	L. PRICE
Survey Office Supervisor	
D. EBERLY	

Surveyed by: [Signature] Date: APRIL 1969
 Project Survey Engineer