

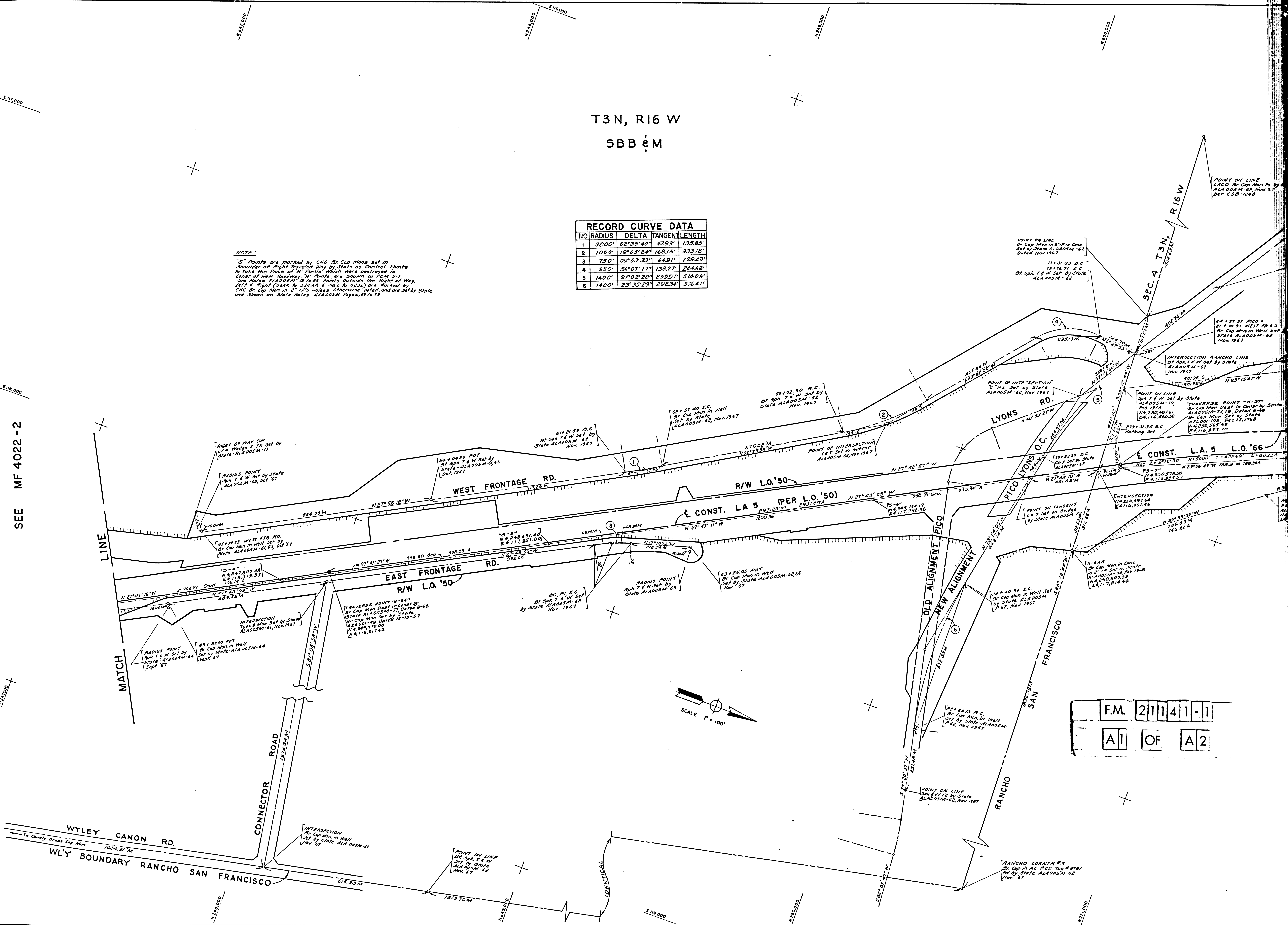
T3N, R16 W
SBB & M

RECORD CURVE DATA				
NO	RADIUS	DELTA	TANGENT LENGTH	
1	3000'	02°35'40"	679.3'	135.85'
2	1000'	19°05'24"	168.15'	333.18'
3	750'	09°53'33"	64.91'	129.49'
4	250'	56°07'17"	133.27'	244.88'
5	1400'	2°02'20"	259.97'	514.08'
6	1400'	2°35'23"	292.34'	576.41'

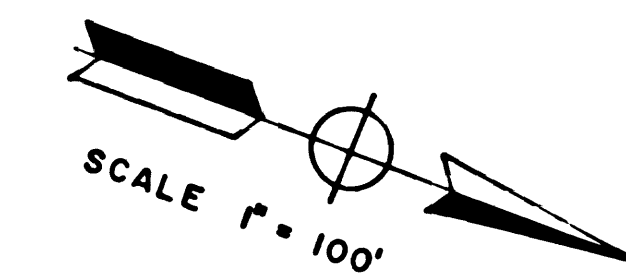
NOTE:

"S" Points are marked by CHC Br. Cap. Mon. set in Shoulder of Right Traveled Way by State as Control Points to Take the Place of "M" Points, which were Destroyed in Course of New Roadway. "M" Points are shown on PGM 5-1. See Notes F1A005M-15 to 25 Points Outside the Right of Way, Left of Right (S&AR to S&AR & 58 L to 523 L) are marked by CHC Br. Cap. Mon. in 2" IPS unless otherwise noted, and are set by State and shown in State Notes ALA005M Pages 69 to 79.

SEE MF 4022 - 2

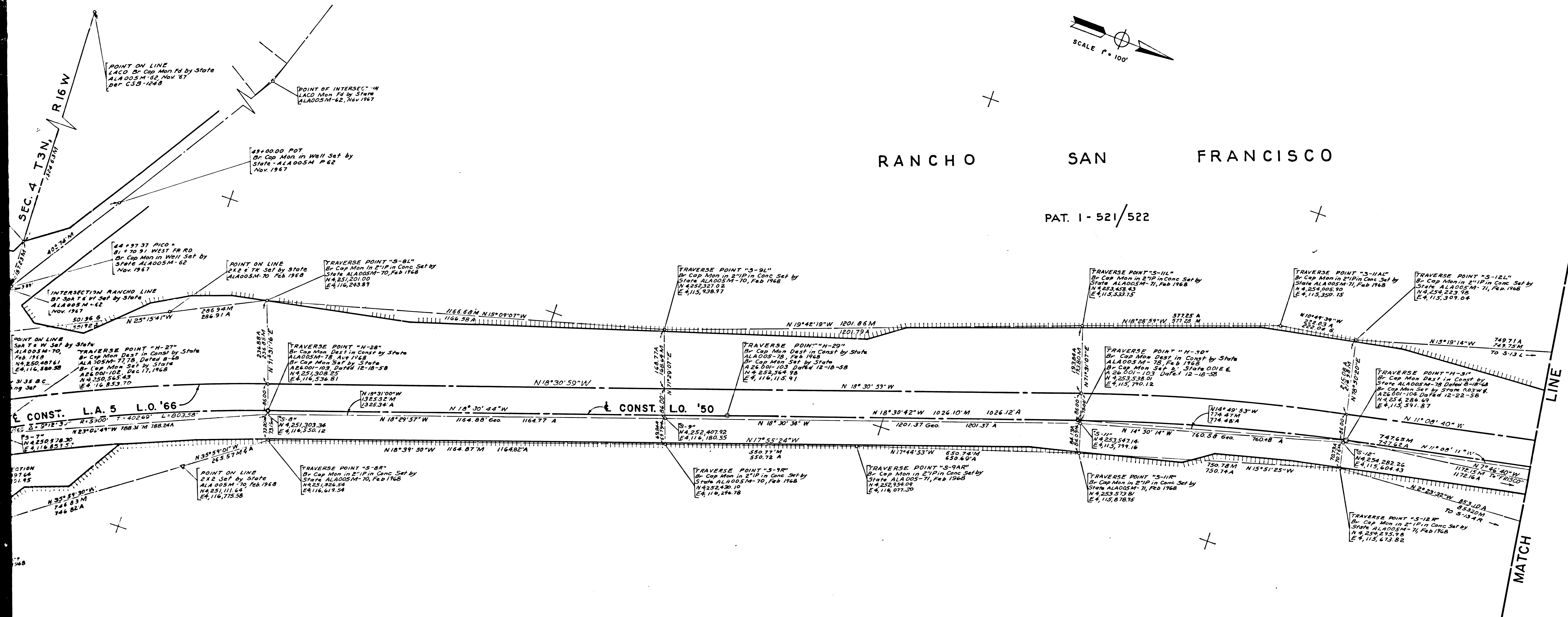


F.M. 21141-1
A1 OF A2



RANCHO SAN FRANCISCO

PAT. 1-521/522



ST. JOHN SUBDIVISION

MR 196 - 304 ET. SEQ.

IN LOS ANGELES COUNTY BETWEEN 0.2 MILE NORTH
 OF CALGROVE DRIVE TO 0.7 MILE NORTH
 OF VALENCIA BLVD. O.C.
 LA-5 PM 49.4 TO PM 53.0
 CONSTRUCTION CONTRACT 07-034723
 COMPLETED: 10-11-67

NOTE
 'S' Points are Marked by CHC Br Cop Mon
 Set in Shoulder of Right Traveled Way by
 State as Control Points to Take the Place
 of 'H' Points Which were Destroyed in Const.
 of New Roadway. 'H' Points are Shown on
 P.C.M. ST. See Notes RLA005M 15 to 25.
 Points Outside the Right of Way Left & Right
 Br Cop Mon in 2" IP in Conc Set by
 State ALA005M-70, Feb 1968
 by CHC Br Cop Mon in 2" Iron Pipes unless
 otherwise noted, and are set by State and shown on
 State Notes ALA005M, Pages 69 to 79.

F.M. 21141-1
 A2 OF A2

Chief of Party	DATE
R. JOHNSON	8/69
Delineator	
M. YOUNG	8/69
Map Supervisor	Completed by
P. NASVIK	L. WAHLWEBER
Project Engineer	
W. J. STEELE	8/69
District Survey Engineer	
W. SORLIE	8/69
Approval Recommended By -	
Assistant District Engineer	
K. E. Mc KEAN	8/69