

RANCHO

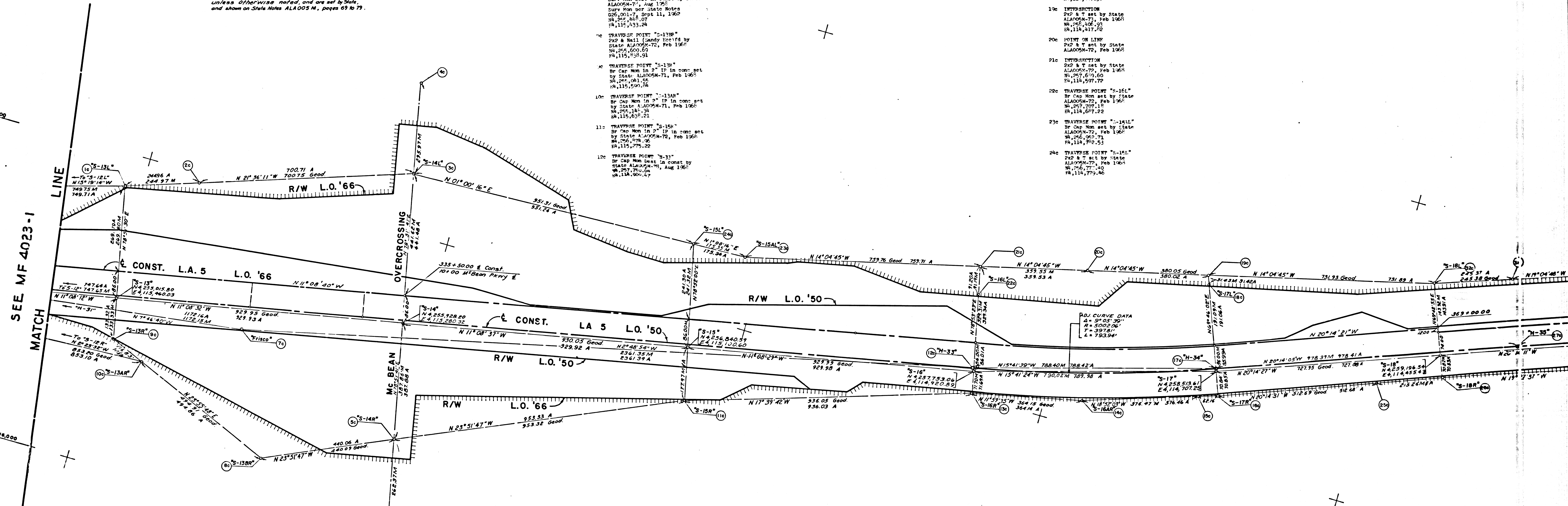
SAN

PAT. I-521/522

NOTE  
 "S" Points are Marked by CMC Dr. Cap Mens.  
 Set in Shoulder of Right Traveled Way  
 by State and Control Points to take the place  
 of "T" Points which were destroyed in  
 construction of New Roadway.  
 "T" Points are Shown on P.C.M. S-1.  
 See Notes FLA005M 15 to 25.  
 Points outside the Right of Way, Left  
 & Right (S&R to 324AR & 39L to 323L)  
 are Marked by CMC Dr. Cap Mens in "S" P's,  
 unless otherwise noted, and are set by State,  
 and shown on State Notes ALA005 M, pages 69 to 79.

- 1c TRAVVERSE POINT "S-131"  
By Cap Men in 2" IP in const set by State ALA005M-71 dated Feb 1965  
N<sub>125</sub>, 247.05  
E<sub>115</sub>, 110.95
- 2c POINT ON LINE  
2x2 & T set by State ALA005M-72, Feb 1965
- 3c TRAVVERSE POINT "S-141"  
By Cap Men in 2" IP in const set by State ALA005M-72, Feb 1965  
N<sub>125</sub>, 256.29  
E<sub>114</sub>, 760.72
- 4c POINT ON LINE  
2x2 & T set by State ALA005M-72, Feb 1965
- 5c TRAVVERSE POINT "S-140"  
By Cap Men set by State ALA005M-71, Nov 1967  
N<sub>125</sub>, 003.13  
E<sub>115</sub>, 660.39
- 6c POINT ON LINE  
This "T" set by State ALA005M-72, Feb 1965
- 7c TRAVVERSE POINT "TRISCO"  
Surv Mon Deat in const by State ALA005M-71, Aug 1965  
Surv Mon Deat state Notes 026, 001-7, Sept 11, 1960  
N<sub>125</sub>, 247.07  
E<sub>115</sub>, 133.24
- 8c TRAVVERSE POINT "S-138"  
2x2 & Nail (Sandy) Deat by State ALA005M-72, Feb 1965  
N<sub>125</sub>, 600.69  
E<sub>115</sub>, 538.91
- 9c TRAVVERSE POINT "S-137"  
By Cap Men in 2" IP in const set by State ALA005M-71, Feb 1965  
N<sub>125</sub>, 081.45  
E<sub>115</sub>, 509.14
- 10c TRAVVERSE POINT "S-134"  
By Cap Men in 2" IP in const set by State ALA005M-71, Feb 1965  
N<sub>125</sub>, 184.34  
E<sub>115</sub>, 639.21
- 11c TRAVVERSE POINT "S-150"  
By Cap Men in 2" IP in const set by State ALA005M-72, Feb 1965  
N<sub>125</sub>, 478.96  
E<sub>115</sub>, 775.22
- 12c TRAVVERSE POINT "S-133"  
By Cap Men Deat in const by State ALA005M-71, Aug 1965  
N<sub>125</sub>, 771.40  
E<sub>114</sub>, 600.17

- 13c TRAVVERSE POINT "S-160"  
By Cap Men in 2" IP in const set by State ALA005M-72, Feb 1965  
N<sub>125</sub>, 756.17  
E<sub>114</sub>, 951.23
- 14c TRAVVERSE POINT "S-160"  
By Cap Men in 2" IP in const set by State ALA005M-72, Feb 1965  
N<sub>125</sub>, 123.06  
E<sub>114</sub>, 215.56
- 15c POINT ON LINE  
2x2 & T set by State ALA005M-73, Feb 1965
- 16c TRAVVERSE POINT "S-170"  
By Cap Men set by State ALA005M-73, Feb 1965  
N<sub>125</sub>, 132.11  
E<sub>114</sub>, 775.72
- 17c TRAVVERSE POINT "S-34"  
By Cap Men Deat in const by State ALA005M-71, Aug 1965  
By Cap Men set by State ALA005M-72, Dec 23, 1965  
N<sub>125</sub>, 509.66  
E<sub>114</sub>, 696.20
- 18c TRAVVERSE POINT "S-171"  
By Cap Men set by State ALA005M-73, Feb 1965  
N<sub>125</sub>, 121.80  
E<sub>114</sub>, 447.30
- 19c INTERSECTION  
2x2 & T set by State ALA005M-73, Feb 1965  
N<sub>125</sub>, 406.25  
E<sub>114</sub>, 317.25
- 20c POINT ON LINE  
2x2 & T set by State ALA005M-72, Feb 1965
- 21c INTERSECTION  
2x2 & T set by State ALA005M-72, Feb 1965  
N<sub>125</sub>, 615.60  
E<sub>114</sub>, 597.72
- 22c TRAVVERSE POINT "S-161"  
By Cap Men set by State ALA005M-73, Feb 1965  
N<sub>125</sub>, 707.15  
E<sub>114</sub>, 607.22
- 23c TRAVVERSE POINT "S-161"  
By Cap Men set by State ALA005M-72, Feb 1965  
N<sub>125</sub>, 063.71  
E<sub>114</sub>, 702.53
- 24c TRAVVERSE POINT "S-161"  
2x2 & T set by State ALA005M-72, Feb 1965  
N<sub>125</sub>, 771.40  
E<sub>114</sub>, 775.46



SEE MF 4023-1

ST. JOHN

MR 196 - 304 ET. SEQ.

F.M.	2	1	1	4	1	-	2
A 1		OF		A 3			



CHO

SAN

FRANCISCO

PAT. 1-521/522

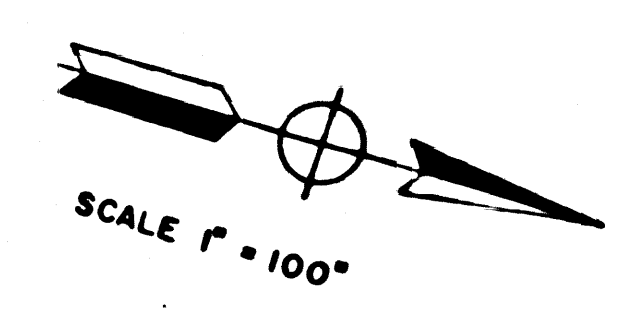
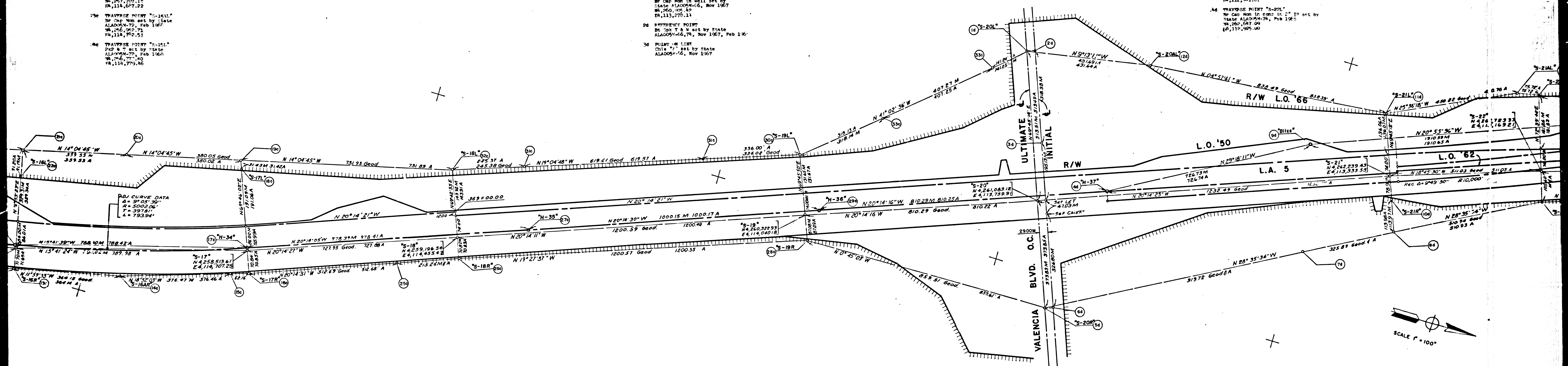
ST.

JOHN

SUBDIVISION

MR 196 - 304 ET. SEQ.

- 3c TRAVERSE POINT "S-168"  
By Cap Mon set in const by State  
ALAO5M-77, Feb 1968  
WA 257,766.77  
EA 114,921.23
- 3d TRAVERSE POINT "S-168A"  
By Cap Mon in 2" IP in const by  
State ALAO5M-77, Feb 1968  
WA 258,123.05  
EA 114,915.56
- 3e POINT ON LINE  
222 & T set by State  
ALAO5M-73, Feb 1968
- 3f TRAVERSE POINT "S-170"  
By Cap Mon set by State  
ALAO5M-77, Feb 1968  
WA 258,516.11  
EA 114,773.72
- 3g TRAVERSE POINT "H-14"  
By Cap Mon set in const by State  
ALAO5M-77, Aug 1968  
By Cap Mon set by State  
APE, 001-105, Dec 23, 1958  
WA 258,509.86  
EA 114,696.20
- 3h TRAVERSE POINT "S-171"  
By Cap Mon set by State  
ALAO5M-77, Feb 1968  
WA 258,417.50  
EA 114,447.30
- 3i INTERSECTION  
222 & T set by State  
ALAO5M-77, Feb 1968  
WA 258,402.22  
EA 114,417.42
- 3j POINT ON LINE  
222 & T set by State  
ALAO5M-77, Feb 1968
- 3k INTERSECTION  
222 & T set by State  
ALAO5M-77, Feb 1968  
WA 257,609.60  
EA 114,597.72
- 3l TRAVERSE POINT "S-161"  
By Cap Mon set by State  
ALAO5M-77, Feb 1968  
WA 257,707.11  
EA 114,677.22
- 3m TRAVERSE POINT "S-161A"  
By Cap Mon set by State  
ALAO5M-77, Feb 1968  
WA 256,962.71  
EA 114,792.53
- 3n TRAVERSE POINT "S-151"  
222 & T set by State  
ALAO5M-77, Feb 1968  
WA 256,771.40  
EA 114,779.46
- 3o POINT ON LINE  
222 & T set by State  
ALAO5M-73, Feb 1968
- 3p TRAVERSE POINT "S-164"  
By Cap Mon set by State  
ALAO5M-77, Feb 1968  
WA 257,221.09  
EA 114,421.06
- 3q TRAVERSE POINT "H-35"  
By Cap Mon set in const by  
State ALAO5M-70, Feb 1968  
By Cap Mon set by State  
APE, 001-105, Dec 23, 1958  
WA 257,827.57  
EA 114,357.70
- 3r TRAVERSE POINT "S-108"  
By Cap Mon set by State  
ALAO5M-77, Feb 1968  
WA 258,253.06  
EA 114,421.06
- 3s TRAVERSE POINT "H-36"  
By Cap Mon set in const by  
State ALAO5M-70, Aug 1968  
By Cap Mon set by State  
APE, 001-105, Dec 23, 1958  
WA 258,266.09  
EA 114,011.76
- 3t TRAVERSE POINT "S-108"  
By Cap Mon set by State  
ALAO5M-77, Feb 1968  
WA 258,261.70  
EA 114,047.00
- 3u POINT ON LINE  
222 & T set by State  
ALAO5M-77, Feb 1968
- 3v TRAVERSE POINT "S-101"  
By Cap Mon set by State  
ALAO5M-77, Feb 1968  
WA 258,116.31  
EA 114,230.78
- 3w POINT ON LINE  
222 & T set by State  
ALAO5M-77, Feb 1968
- 3x TRAVERSE POINT "S-200"  
By Cap Mon in well set by  
State ALAO5M-66, Nov 1967  
WA 258,454.49  
EA 114,275.13
- 3y REFERENCE POINT  
By 3rd T & W set by State  
ALAO5M-66, Nov 1967, Feb 1968
- 3z POINT ON LINE  
222 & T set by State  
ALAO5M-66, Nov 1967
- 4a TRAVERSE POINT "H-17"  
By Cap Mon set in const by State  
ALAO5M-79, Feb 1968  
By Cap Mon set by State  
APE, 001-106, Dec 23, 1958  
WA 251,124.39  
EA 113,665.82
- 4b TRAVERSE POINT "S-208"  
By Cap Mon in well set by State  
ALAO5M-66, Nov 1967  
WA 251,212.50  
EA 114,110.87
- 4c REFERENCE POINT  
By 3rd T & W set by State  
ALAO5M-66, Nov 1967
- 4d POINT ON LINE  
222 & T set by State  
ALAO5M-77, Feb 1968
- 4e INTERSECTION  
222 & T set by State  
ALAO5M-77, Feb 1968  
WA 258,366.19  
EA 113,514.53
- 4f TRAVERSE POINT "S-210"  
By Cap Mon set in const by State  
ALAO5M-77, Feb 1968  
By Cap Mon set by State  
APE, 001-106, Dec 23, 1958  
WA 251,931.14  
EA 113,310.13
- 4g TRAVERSE POINT "S-211"  
By Cap Mon in const in 2" IP set  
by State ALAO5M-77, Feb 1968  
WA 258,407.60  
EA 113,407.60
- 4h TRAVERSE POINT "S-211"  
By Cap Mon in const in 2" IP set  
by State ALAO5M-77, Feb 1968  
WA 258,166.78  
EA 113,136.47
- 4i TRAVERSE POINT "S-20AL"  
By Cap Mon in const in 2" IP set by  
State ALAO5M-77, Feb 1968  
WA 258,266.75  
EA 113,209.98
- 4j TRAVERSE POINT "S-21AL"  
By Cap Mon in const in 2" IP set by  
State ALAO5M-77, Feb 1968  
WA 258,573.23  
EA 113,081.67
- 4k TRAVERSE POINT "S-20L"  
By Cap Mon in const in 2" IP set by  
State ALAO5M-77, Feb 1968  
WA 258,587.00  
EA 113,465.00



F.M. 21141-2  
A 2 OF A 3



