

(4) INTERSECTION
Spk & W set by State
Per ALA 2108-299
2" I.P. on 12" conc Plug
& L.S. Tag #2342

(1a) INTERSECTION
Spk & W set by State
Per ALA 2108-299
2" I.P. on 12" conc Plug
& L.S. Tag #2342

(2a) INTERSECTION
1" I.P. Plug & T.Dn. 0.1
Pd by State
Per ALA 2108-305
3/8" I.P. in Conc.
Set by County
Per C.S.F.S. 1976-120

(1b) INTERSECTION
Spk & W set by State
Per ALA 2108-305

(2b) INTERSECTION
Spk & W set by State
Per ALA 2108-305

(2f) INTERSECTION
Spk & W set by State
Per ALA 2108-291
C.S. Mon. Per F.O. 700-393

(3f) INTERSECTION
Spk & W set by State
Per ALA 2108-291

(4f) INTERSECTION
Spk & W set by State
Per ALA 2108-291

(5f) INTERSECTION
Spk & W set by State
Per ALA 2108-291

(4g) POINT ON LINE
Remot. in top of curb
Pd by State
Per ALA 2108-291

(5g) TRACT CORNER
Per Tr. 13041

(3i) INTERSECTION
Spk & W set by State
Per ALA 2108-294

(4h) INTERSECTION
Spk & W set by State
Per ALA 2108-295

(5h) TRACT CORNER
Set 2" I.P. Plug
Per Tr. 15057

(6h) INTERSECTION
Spk & W set by State
Per ALA 2108-295

(7h) INTERSECTION
Track on Barricade
Set by State
Per ALA 2108-295

(7i) INTERSECTION
Spk & W set by State
Per ALA 2108-294

(8i) POINT OF INTERSECTION
Spk & W set by State
Per ALA 2108-294

(9i) INTERSECTION
Spk & W set by State
Per ALA 2108-294

(7j) INTERSECTION
Spk & W set by State
Per ALA 2108-294

(8j) INTERSECTION
Spk & W set by State
Per ALA 2108-294

(5l) INTERSECTION
R.H. Nail on Lawn
Set by State
Per ALA 2108-294

(6l) INTERSECTION
Spk & W set on Prod.
from Buchanan by State
Per ALA 2108-294

(2a) TRACT CORNER
Per Tr. 14913

(3a) INTERSECTION
Spk & W set by State
Per ALA 2108-294

(4a) INTERSECTION
Spk & W set by State
Per ALA 2108-294

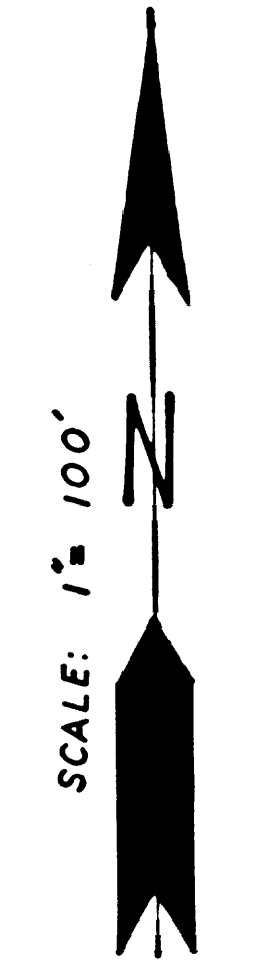
(5a) INTERSECTION
Spk & W set by State
Per ALA 2108-294

(6a) TRACT CORNER
Set 2" I.P. 12" dn.
Per Tr. 15350

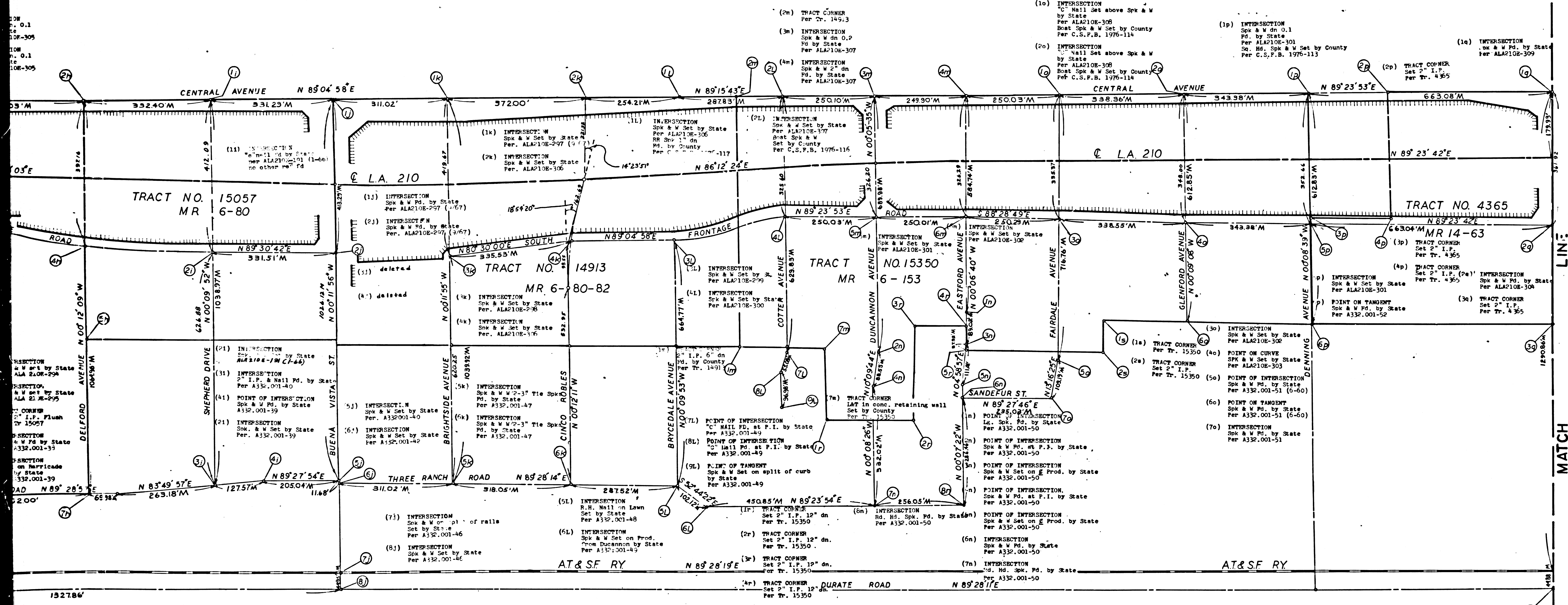
(7a) TRACT CORNER
Set 2" I.P. 12" dn.
Per Tr. 15350

(8a) TRACT CORNER
Set 2" I.P. 12" dn.
Per Tr. 15350

(9a) TRACT CORNER
Set 2" I.P. 12" dn.
Per Tr. 15350



F.M. 21142
A2 OF A3



References - Notes:
 County Surveyor's Field Books:
 C.S.F.B. 700-3531 C.S.F.B. 706-391
 C.S.F.B. 1976-113, 114, 116, 120
 Tract Maps:
 Rancho Arroyo de Duarte; Tr. 4365
 Tr. 8058; Tr. 13041; Tr. 14913; Tr. 15057; Tr. 15350
 Division of Highways Field Books:
 A.H. 001-17, 24, 44, 45, 47, 48, 49, 50, 51, 52
 ALA 001-15, 24, 28, 28, 28, 29, 29, 29, 29, 29,
 29, 29, 29, 29, 29, 30, 30, 30, 30, 30, 30,
 30, 30, 30, 30, 30, 30
 1. Bearings are taken from C&G 332 and
 C&G 411 and are based on the California
 Coordinate System, Zone VII, Sec. 0009
 of the Public Resources Code.
 2. Division of Highways survey information
 is available from the Engineering
 Services Department located at 550
 South Vermont Ave., Los Angeles, California.
 3. Division of Highways Right-of-Way
 information is available from the
 Right of Way Department located at
 120 Spring St., Los Angeles,
 California.

Chief of Party	R.W. GIERLOFF	0124
Drawn by	W.J. BOLLINGER	458
Map Supervisor	W. COLLINGS	459
Project Engineer	J.W. STEELE	459
District Survey Engineer	W.C. SORLIE	459
Approval recommended by	Assistant District Engineer	459
	K.E. MCKEAN	

F.M. 21142
 A3 OF A3

SEE MF 4064-1