

- 1-0 ANGLE POINT
L.A. Co. Rd. Dept.
FA. 191-141
- 2-0 INTERSECTION
L.A. Co. Rd. Dept.
Survey Station 2-6 on well
by State per ALA 2108-0225
(10-67)
L.A. Co. Rd. Dept. FA. 190-147
- 3-0 INTERSECTION
4 L.C. Streets Rd. by State
per ALA 2108-0225 (10-67)
L.A. Co. Rd. Dept. FA. 190-147
- 4-0 INTERSECTION
4 Chm. T. Streets Rd. by State
per ALA 2108-0225 (10-67)
- 5-0 INTERSECTION
Bull Sp. T.E.M. Rd. by State
per ALA 2108-0225 (10-67)
- 6-0 POINT ON TANGENT
By Sp. T.E.M. Rd. by State
per ALA 2108-0225 (10-67)
- 7-0 INTERSECTION
Cul. Sac. T.E.M. Rd. by State
Appm. 6 of ally
per ALA 2108-0225 (10-67)
Cul. Sac. T.E.M. Rd. by State
per ALA 2108-0225 (10-67)
- 8-0 INTERSECTION
Bull Sp. T.E.M. Rd. by State
to replace Sp. T.E.M.
per ALA 2108-0225 (10-67)
- 9-0 CUL. DE SAC
L.C. Rd. by State
per ALA 2108-0225 (10-67)
- 10-0 INTERSECTION
Cul. Sac. T.E.M. Rd. by State
Appm. 6 of ally
per ALA 2108-0225 (10-67)
Cul. Sac. T.E.M. Rd. by State
per ALA 2108-0225 (10-67)

- 1-4 INTERSECTION
PR. on M.H. Rd. by State
per ALA 2108-0225 (10-67)
PR. on M.H. Rd. by State (No Ref.)
per ALA 2108-0225 (10-67)
- 2-0 INTERSECTION
Canc. N. Rd. by State
per ALA 2108-0225 (10-67)
Canc. N. Rd. by State
per ALA 2108-0225 (10-67)
- 3-0 INTERSECTION
M.H. w/6 Cans. N. Streets Rd. by
State per ALA 2108-0225 (10-67)
M.H. w/6 Cans. N. Streets Rd. by
State per ALA 2108-0225 (10-67)
- 4-0 INTERSECTION
Sp. T.E.M. Rd. by State
per ALA 2108-0225 (10-67)
M.H. w/6 PR. on Rom. Rd. by State
per ALA 2108-0225 (10-67)
- 5-0 INTERSECTION
M.H. w/6 PR. on Rom. Rd. by State
per ALA 2108-0225 (10-67)
M.H. w/6 PR. on Rom. Rd. by State
per ALA 2108-0225 (10-67)

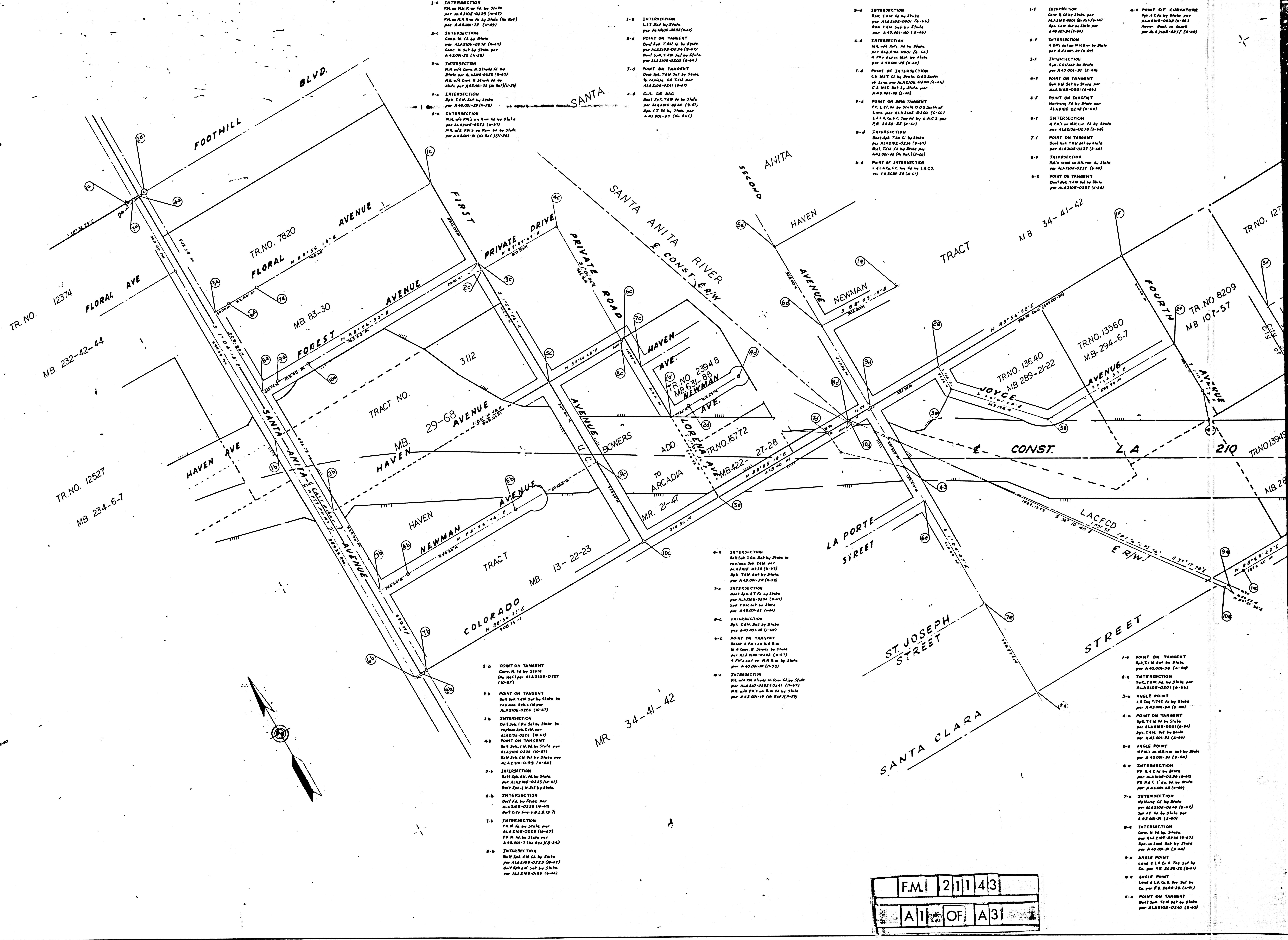
- 1-8 INTERSECTION
L.E. Rd. by State
per ALA 2108-0225 (10-67)
- 2-0 POINT ON TANGENT
Bull Sp. T.E.M. Rd. by State
per ALA 2108-0225 (10-67)
Bull Sp. T.E.M. Rd. by State
per ALA 2108-0225 (10-67)
- 3-0 POINT ON TANGENT
Bull Sp. T.E.M. Rd. by State
per ALA 2108-0225 (10-67)
C.S. T.E.M. Rd. by State
per ALA 2108-0225 (10-67)
- 4-0 CUL. DE SAC
L.C. Rd. by State
per ALA 2108-0225 (10-67)
Sp. T.E.M. Rd. by State
per ALA 2108-0225 (10-67)

- 2-0 INTERSECTION
Bull Sp. T.E.M. Rd. by State
per ALA 2108-0225 (10-67)
Bull Sp. T.E.M. Rd. by State
per ALA 2108-0225 (10-67)
- 3-0 INTERSECTION
M.H. w/6 PR. Rd. by State
per ALA 2108-0225 (10-67)
Bull Sp. T.E.M. Rd. by State
per ALA 2108-0225 (10-67)
- 4-0 POINT OF INTERSECTION
C.S. T.E.M. Rd. by State
per ALA 2108-0225 (10-67)
C.S. T.E.M. Rd. by State
per ALA 2108-0225 (10-67)
- 5-0 POINT ON TANGENT
L.C. Rd. by State
per ALA 2108-0225 (10-67)
L.A. Co. Rd. Dept. by L.A.C.S. per
FR. 2488-23 (10-61)
- 6-0 INTERSECTION
Bull Sp. T.E.M. Rd. by State
per ALA 2108-0225 (10-67)
Bull Sp. T.E.M. Rd. by State
per ALA 2108-0225 (10-67)
- 7-0 POINT ON TANGENT
Bull Sp. T.E.M. Rd. by State
per ALA 2108-0225 (10-67)
- 8-0 INTERSECTION
PR. on M.H. Rd. by State
per ALA 2108-0225 (10-67)
- 9-0 POINT ON TANGENT
Bull Sp. T.E.M. Rd. by State
per ALA 2108-0225 (10-67)

- 1-0 INTERSECTION
Canc. N. Rd. by State
per ALA 2108-0225 (10-67)
Sp. T.E.M. Rd. by State
per ALA 2108-0225 (10-67)
- 2-0 INTERSECTION
4 PR. on M.H. Rd. by State
per ALA 2108-0225 (10-67)
Sp. T.E.M. Rd. by State
per ALA 2108-0225 (10-67)
- 3-0 POINT ON TANGENT
Bull Sp. T.E.M. Rd. by State
per ALA 2108-0225 (10-67)
- 4-0 INTERSECTION
4 PR. on M.H. Rd. by State
per ALA 2108-0225 (10-67)
- 5-0 POINT ON TANGENT
M.H. w/6 PR. Rd. by State
per ALA 2108-0225 (10-67)
- 6-0 INTERSECTION
4 PR. on M.H. Rd. by State
per ALA 2108-0225 (10-67)
- 7-0 POINT ON TANGENT
Bull Sp. T.E.M. Rd. by State
per ALA 2108-0225 (10-67)
- 8-0 INTERSECTION
PR. on M.H. Rd. by State
per ALA 2108-0225 (10-67)
- 9-0 POINT ON TANGENT
Bull Sp. T.E.M. Rd. by State
per ALA 2108-0225 (10-67)

- 1-0 POINT OF CURVATURE
Sp. T.E.M. Rd. by State
per ALA 2108-0225 (10-67)
Sp. T.E.M. Rd. by State
per ALA 2108-0225 (10-67)

SEE MF 4061-1



F.M. 211143
ALL OF A31

1-0 POINT ON TANGENT
 Spk. 100' by State per
 ALA 200-0000 (1-64)
 Appon Book on Sheet
 per ALA 200-0000 (1-64)

1-1 INTERSECTION
 Spk. 100' by State per
 ALA 200-0000 (1-64)

1-2 POINT ON TANGENT
 Spk. 100' by State per
 ALA 200-0000 (1-64)

1-3 INTERSECTION
 Spk. 100' by State per
 ALA 200-0000 (1-64)

1-4 POINT ON TANGENT
 Spk. 100' by State per
 ALA 200-0000 (1-64)

1-5 INTERSECTION
 Spk. 100' by State per
 ALA 200-0000 (1-64)

1-6 POINT ON TANGENT
 Spk. 100' by State per
 ALA 200-0000 (1-64)

1-7 INTERSECTION
 Spk. 100' by State per
 ALA 200-0000 (1-64)

1-8 POINT ON TANGENT
 Spk. 100' by State per
 ALA 200-0000 (1-64)

1-9 INTERSECTION
 Spk. 100' by State per
 ALA 200-0000 (1-64)

1-10 POINT ON TANGENT
 Spk. 100' by State per
 ALA 200-0000 (1-64)

1-11 INTERSECTION
 Spk. 100' by State per
 ALA 200-0000 (1-64)

1-12 POINT ON TANGENT
 Spk. 100' by State per
 ALA 200-0000 (1-64)

1-13 INTERSECTION
 Spk. 100' by State per
 ALA 200-0000 (1-64)

1-14 POINT ON TANGENT
 Spk. 100' by State per
 ALA 200-0000 (1-64)

1-15 INTERSECTION
 Spk. 100' by State per
 ALA 200-0000 (1-64)

1-16 POINT ON TANGENT
 Spk. 100' by State per
 ALA 200-0000 (1-64)

1-17 INTERSECTION
 Spk. 100' by State per
 ALA 200-0000 (1-64)

1-18 POINT ON TANGENT
 Spk. 100' by State per
 ALA 200-0000 (1-64)

1-19 INTERSECTION
 Spk. 100' by State per
 ALA 200-0000 (1-64)

1-20 POINT ON TANGENT
 Spk. 100' by State per
 ALA 200-0000 (1-64)

1-21 INTERSECTION
 Spk. 100' by State per
 ALA 200-0000 (1-64)

1-22 POINT ON TANGENT
 Spk. 100' by State per
 ALA 200-0000 (1-64)

1-23 INTERSECTION
 Spk. 100' by State per
 ALA 200-0000 (1-64)

1-24 POINT ON TANGENT
 Spk. 100' by State per
 ALA 200-0000 (1-64)

1-25 INTERSECTION
 Spk. 100' by State per
 ALA 200-0000 (1-64)

1-26 POINT ON TANGENT
 Spk. 100' by State per
 ALA 200-0000 (1-64)

1-27 INTERSECTION
 Spk. 100' by State per
 ALA 200-0000 (1-64)

1-28 POINT ON TANGENT
 Spk. 100' by State per
 ALA 200-0000 (1-64)

1-29 INTERSECTION
 Spk. 100' by State per
 ALA 200-0000 (1-64)

1-30 POINT ON TANGENT
 Spk. 100' by State per
 ALA 200-0000 (1-64)

1-31 INTERSECTION
 Spk. 100' by State per
 ALA 200-0000 (1-64)

1-32 POINT ON TANGENT
 Spk. 100' by State per
 ALA 200-0000 (1-64)

1-33 INTERSECTION
 Spk. 100' by State per
 ALA 200-0000 (1-64)

1-34 POINT ON TANGENT
 Spk. 100' by State per
 ALA 200-0000 (1-64)

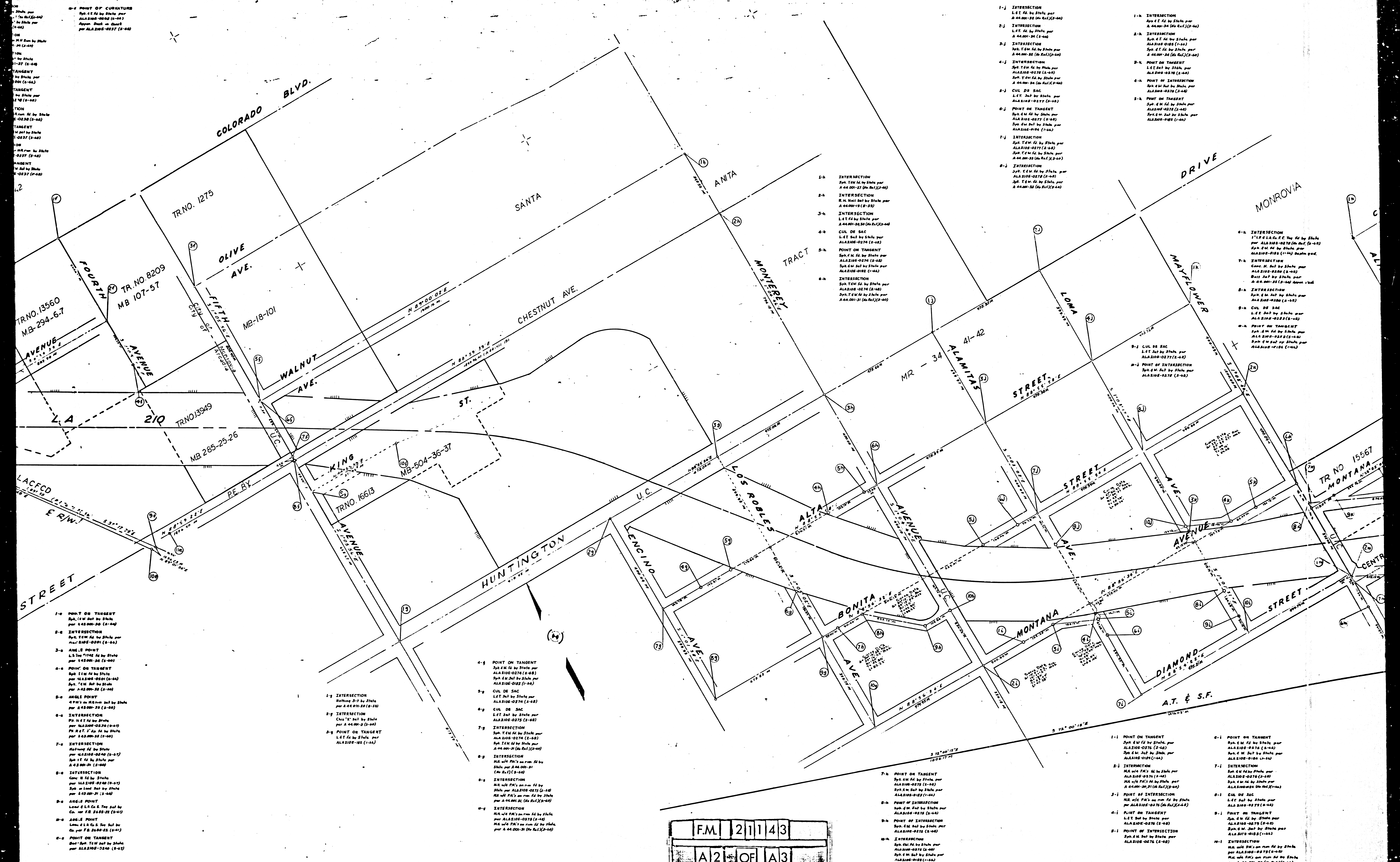
1-35 INTERSECTION
 Spk. 100' by State per
 ALA 200-0000 (1-64)

1-36 POINT ON TANGENT
 Spk. 100' by State per
 ALA 200-0000 (1-64)

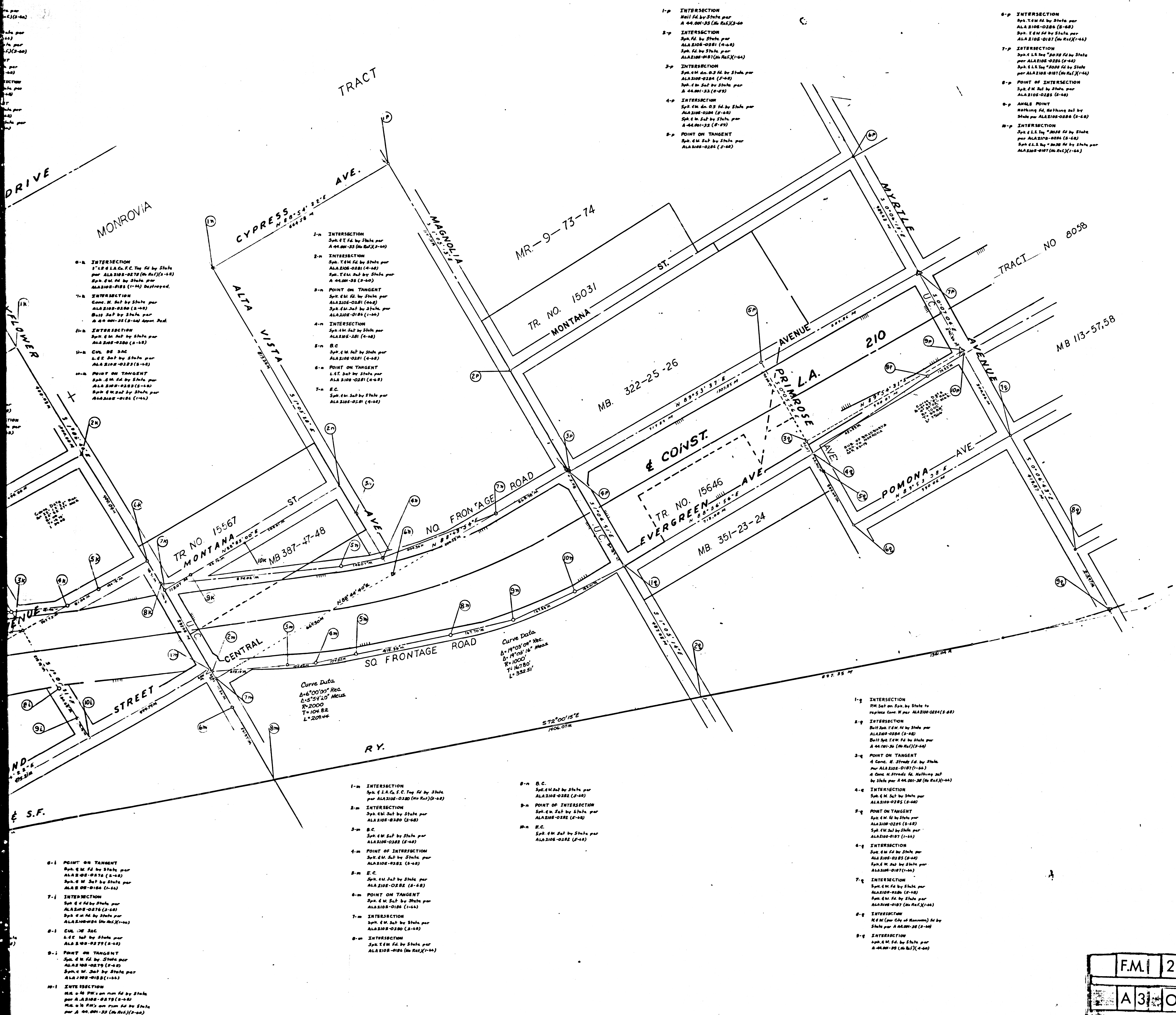
1-37 INTERSECTION
 Spk. 100' by State per
 ALA 200-0000 (1-64)

1-38 POINT ON TANGENT
 Spk. 100' by State per
 ALA 200-0000 (1-64)

1-39 INTERSECTION
 Spk. 100' by State per
 ALA 200-0000 (1-64)



F.M. 21143
 A2 OF A3



- 1-P INTERSECTION
Sta. 14.00 by State per
A 44,001-23 (No Rec)(1-64)
- 2-P INTERSECTION
Sta. 14.00 by State per
ALA 2108-0281 (1-64)
Sta. 14.00 by State per
ALA 2108-0281 (1-64)
- 3-P INTERSECTION
Sta. 14.00 by State per
ALA 2108-0281 (1-64)
Sta. 14.00 by State per
A 44,001-23 (1-64)
- 4-P INTERSECTION
Sta. 14.00 by State per
ALA 2108-0281 (1-64)
Sta. 14.00 by State per
A 44,001-23 (1-64)
- 5-P POINT ON TANGENT
Sta. 14.00 by State per
ALA 2108-0281 (1-64)
- 6-P INTERSECTION
Sta. 14.00 by State per
ALA 2108-0281 (1-64)
Sta. 14.00 by State per
ALA 2108-0281 (1-64)
- 7-P INTERSECTION
Sta. 14.00 by State per
ALA 2108-0281 (1-64)
Sta. 14.00 by State per
ALA 2108-0281 (1-64)
- 8-P ANGLE POINT
Sta. 14.00 by State per
ALA 2108-0281 (1-64)
- 9-P INTERSECTION
Sta. 14.00 by State per
ALA 2108-0281 (1-64)
Sta. 14.00 by State per
ALA 2108-0281 (1-64)

IN LOS ANGELES COUNTY BETWEEN SANTA ANITA AVE.
 IN ARCADIA AND MYRTLE AVE. IN MONROVIA
 LA-210 PH.319 to 338
 Construction Contract 07503-042113
 Completed 9-67

References: Maps:
 County Surveyor's Field Book: 287-44, 2888-22-25
 County Road Dept. Field Book: FA 191-141-147
 City Field Book: L.B. 15-71
 Contract Maps: Bower's Add. to ARCADIA - MR 21-47, Haven Tract - MB 19-62, 63
 MONROVIA Tract - MR 9-73, 74, SANTA ANITA Tract - MR 24-41, 42
 Sub. of Broadway's Add. to MONROVIA - MR 22-19, 1879; MR 18-3112; MB 29-62, 63, 64, 65
 MB 107-21, 12640; MB 194-C.T. 12640; MB 229-2122, 12945; MB 200-26-26, 10047;
 MB 322-25-24, 19547; MB 287-47-48, 19546; MB 321-23-24, 4619; MB 300-26-26, 16778
 MB 422-27-28, 123948; MB 631-88

Division of Highways Field Books:
 A 43 001-148
 A 44 001-123, 12-42
 ALA 2108-0181-0187, 0197-0202, 0224-0241, 0273-0286

1. Bearings are taken from C.C.M. 44.1 and are based on the California
 Coordinate System, Zone VII, Sec. 8809 of the Public Resources Code.

2. Division of Highways survey information is available from the
 Engineering Services Department located at 350 South Vermont Ave.
 Los Angeles, California.

3. Division of Highways Right-of-Way information is available from the
 Right-of-Way Department located at 220 South Spring St.
 Los Angeles, California.

- 0-1 INTERSECTION
Sta. 14.00 by State per
ALA 2108-0278 (No Rec)(1-64)
Sta. 14.00 by State per
ALA 2108-0278 (1-64) (No Rec)
- 7-1 INTERSECTION
Sta. 14.00 by State per
ALA 2108-0281 (1-64)
Sta. 14.00 by State per
ALA 2108-0281 (1-64)
- 8-1 INTERSECTION
Sta. 14.00 by State per
ALA 2108-0281 (1-64)
Sta. 14.00 by State per
ALA 2108-0281 (1-64)
- 9-1 POINT ON TANGENT
Sta. 14.00 by State per
ALA 2108-0281 (1-64)
- 10-1 INTERSECTION
Sta. 14.00 by State per
ALA 2108-0281 (1-64)
Sta. 14.00 by State per
ALA 2108-0281 (1-64)

- 1-M INTERSECTION
Sta. 14.00 by State per
A 44,001-23 (No Rec)(1-64)
- 2-M INTERSECTION
Sta. 14.00 by State per
ALA 2108-0281 (1-64)
Sta. 14.00 by State per
A 44,001-23 (1-64)
- 3-M POINT ON TANGENT
Sta. 14.00 by State per
ALA 2108-0281 (1-64)
Sta. 14.00 by State per
ALA 2108-0281 (1-64)
- 4-M INTERSECTION
Sta. 14.00 by State per
ALA 2108-0281 (1-64)
- 5-M B.C.
Sta. 14.00 by State per
ALA 2108-0281 (1-64)
- 6-M POINT ON TANGENT
Sta. 14.00 by State per
ALA 2108-0281 (1-64)
- 7-M B.C.
Sta. 14.00 by State per
ALA 2108-0281 (1-64)

- 0-N B.C.
Sta. 14.00 by State per
ALA 2108-0282 (1-64)
- 0-M POINT OF INTERSECTION
Sta. 14.00 by State per
ALA 2108-0282 (1-64)
- 0-N B.C.
Sta. 14.00 by State per
ALA 2108-0282 (1-64)

- 1-Q INTERSECTION
Sta. 14.00 by State per
ALA 2108-0281 (1-64)
- 2-Q INTERSECTION
Sta. 14.00 by State per
ALA 2108-0281 (1-64)
Sta. 14.00 by State per
A 44,001-23 (No Rec)(1-64)
- 3-Q POINT ON TANGENT
Sta. 14.00 by State per
ALA 2108-0281 (1-64)
Sta. 14.00 by State per
A 44,001-23 (No Rec)(1-64)
- 4-Q INTERSECTION
Sta. 14.00 by State per
ALA 2108-0281 (1-64)
- 5-Q POINT ON TANGENT
Sta. 14.00 by State per
ALA 2108-0281 (1-64)
Sta. 14.00 by State per
ALA 2108-0281 (1-64)
- 6-Q INTERSECTION
Sta. 14.00 by State per
ALA 2108-0281 (1-64)
Sta. 14.00 by State per
ALA 2108-0281 (1-64)
- 7-Q INTERSECTION
Sta. 14.00 by State per
ALA 2108-0281 (1-64)
Sta. 14.00 by State per
ALA 2108-0281 (1-64)
- 8-Q INTERSECTION
Sta. 14.00 by State per
ALA 2108-0281 (1-64)
Sta. 14.00 by State per
ALA 2108-0281 (1-64)
- 9-Q INTERSECTION
Sta. 14.00 by State per
ALA 2108-0281 (1-64)
Sta. 14.00 by State per
ALA 2108-0281 (1-64)

- 0-1 POINT ON TANGENT
Sta. 14.00 by State per
ALA 2108-0276 (1-64)
Sta. 14.00 by State per
ALA 2108-0276 (1-64)
- 7-1 INTERSECTION
Sta. 14.00 by State per
ALA 2108-0276 (1-64)
Sta. 14.00 by State per
ALA 2108-0276 (1-64)
- 8-1 INTERSECTION
Sta. 14.00 by State per
ALA 2108-0277 (1-64)
Sta. 14.00 by State per
ALA 2108-0277 (1-64)
- 9-1 POINT ON TANGENT
Sta. 14.00 by State per
ALA 2108-0279 (1-64)
Sta. 14.00 by State per
ALA 2108-0279 (1-64)
- 10-1 INTERSECTION
Sta. 14.00 by State per
ALA 2108-0279 (1-64)
Sta. 14.00 by State per
ALA 2108-0279 (1-64)

- 1-M INTERSECTION
Sta. 14.00 by State per
ALA 2108-0280 (1-64)
- 2-M INTERSECTION
Sta. 14.00 by State per
ALA 2108-0280 (1-64)
- 3-M B.C.
Sta. 14.00 by State per
ALA 2108-0280 (1-64)
- 4-M POINT OF INTERSECTION
Sta. 14.00 by State per
ALA 2108-0280 (1-64)
- 5-M B.C.
Sta. 14.00 by State per
ALA 2108-0280 (1-64)
- 6-M POINT ON TANGENT
Sta. 14.00 by State per
ALA 2108-0280 (1-64)
- 7-M INTERSECTION
Sta. 14.00 by State per
ALA 2108-0280 (1-64)
- 8-M INTERSECTION
Sta. 14.00 by State per
ALA 2108-0280 (1-64)

F.M. 21143
 A 3 OF A 3

Party Chief K. LINVILLE	Drawn by BOLLINGER	1-69
Supervisor NONE	Compiled by BOLLINGER	1-69
Project Engineer W.J. ST. JELE		1-69
District Survey Engineer W.C. SORLIE		1-69
Approval Recommended by Assistant District Engineer K. MCKEAN		1-69

SEE MF-4063-1