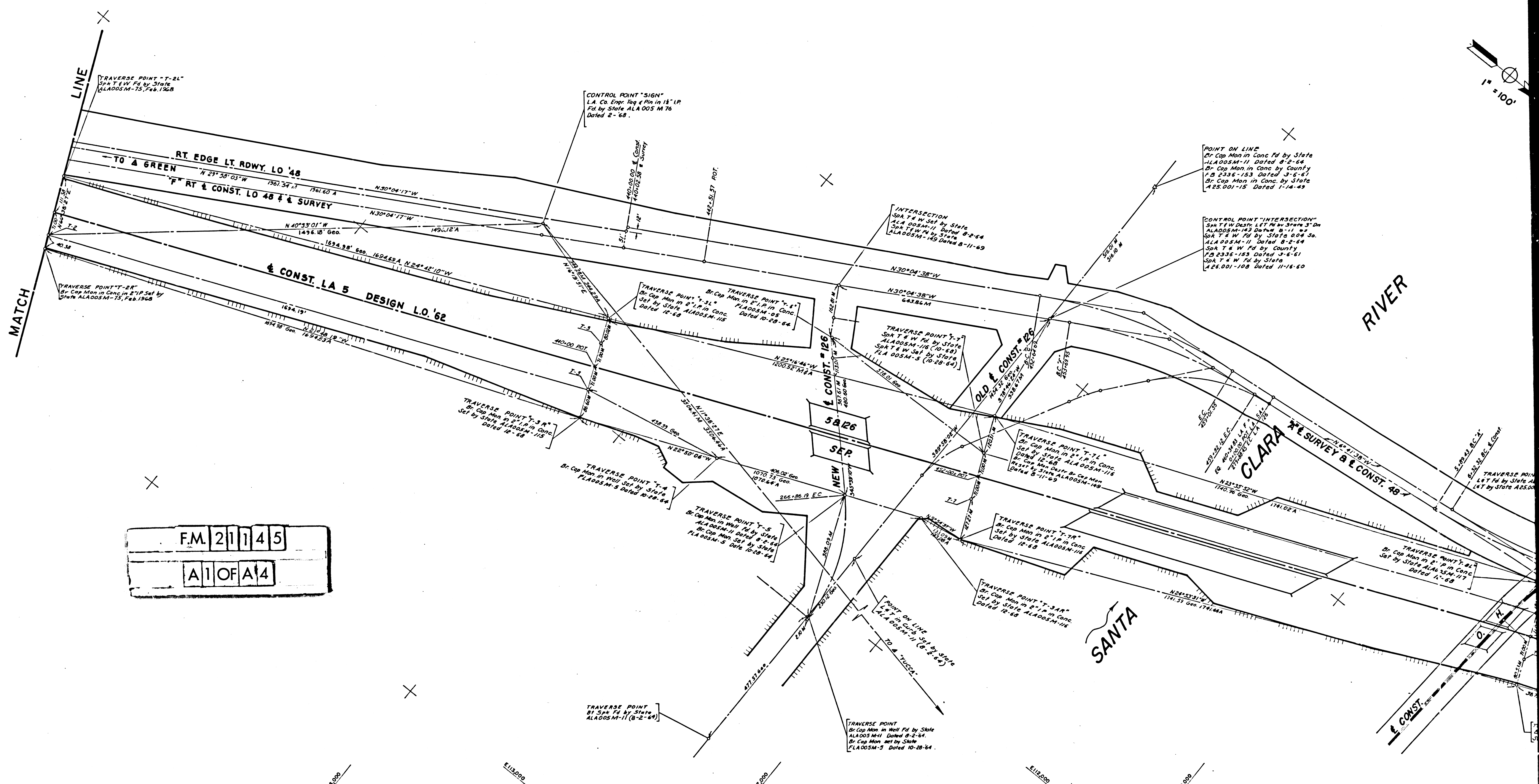


RANCHO

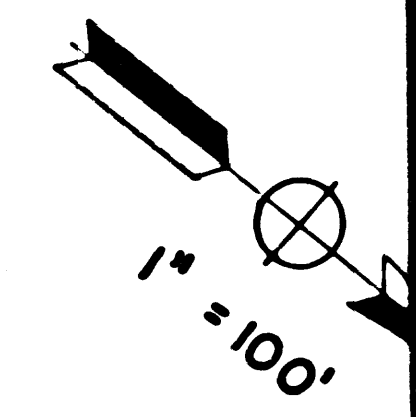
THE

NEWHALL

SEE MF 4023-2



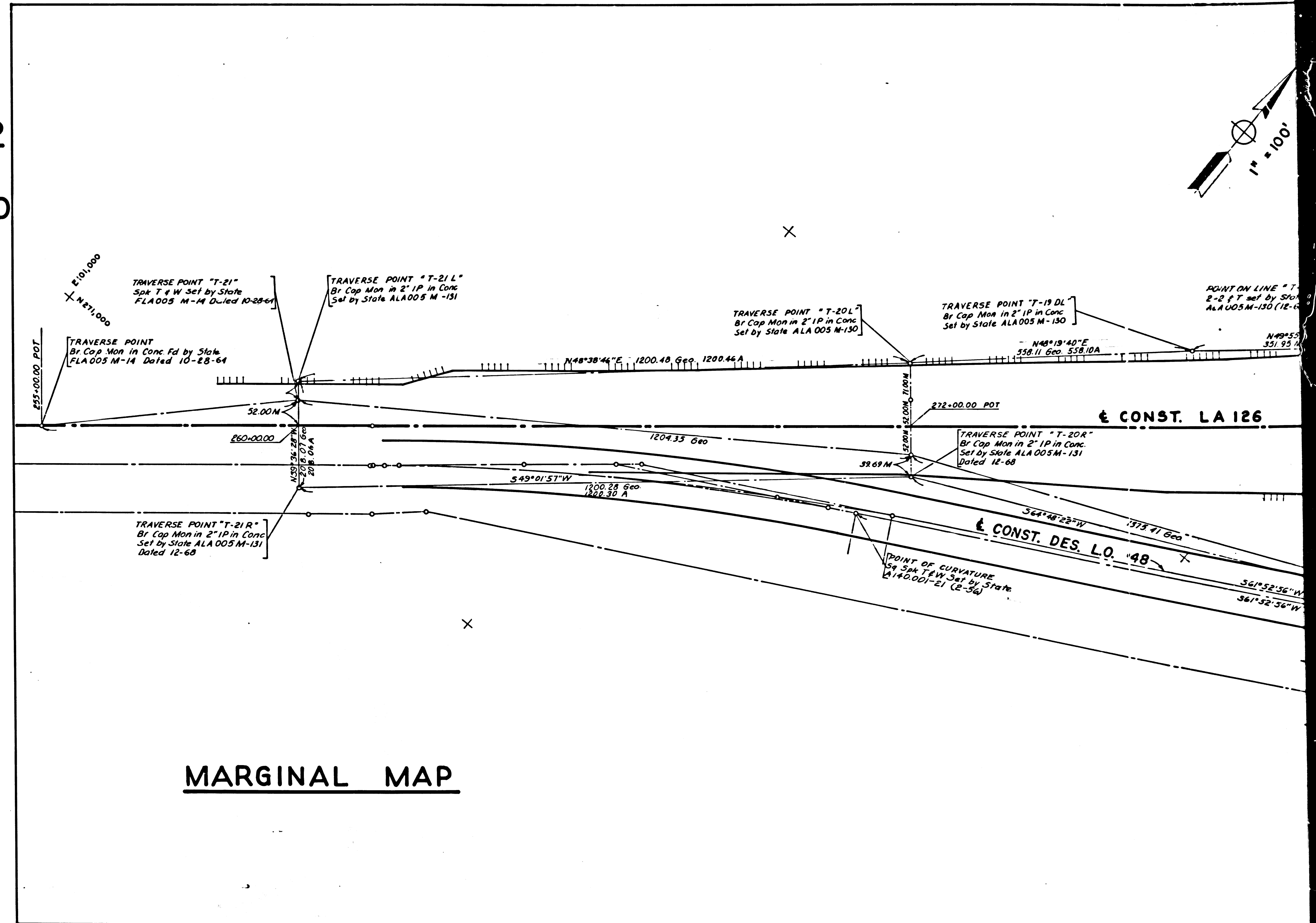
F.M.	2	1	7	4	5
A	1	O	F	A	4



RANCHO

SAN  
P: 1-521 & 522

THE NEWHALL LAND AND

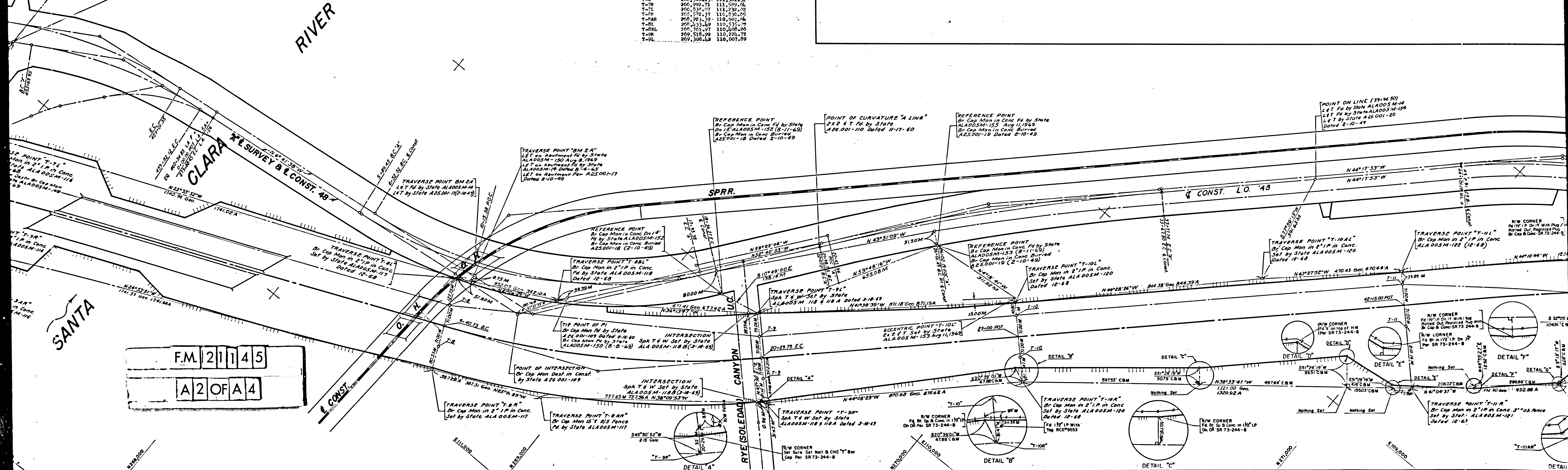


MARGINAL MAP

POINT ON LINE  
Dr. Cap. Mon. in Conc. Fd. by State  
ALA005M-11 Dated 8-2-64  
Dr. Cap. Mon. in Conc. by County  
FD 2336-153 Dated 3-5-61  
Dr. Cap. Mon. in Conc. by State  
A25.001-15 Dated 1-14-49

CONTROL POINT "INTERSECTION"  
Spk. T & W. Dsp. LET by State 3-D  
ALA005M-142 Dated 8-1-64  
Spk. T & W. Fd. by State 004 Jo.  
ALA005M-11 Dated 8-2-64  
Spk. T & W. Fd. by County  
FD 2336-153 Dated 3-5-61  
Spk. T & W. Fd. by State  
A25.001-108 Dated 11-16-60

DESCRIPTION	NORTH	EAST
YUCCA	266,856.15	112,355.39
RTCM	265,122.11	111,617.87
INTERSECTION	265,784.23	110,897.28
T-20	265,161.35	112,051.58
T-21	264,212.29	112,152.20
T-20R	265,376.49	112,223.73
T-21R	265,861.62	111,012.46
T-21L	265,759.43	111,744.66
T-2	265,024.49	111,754.03
T-3	265,306.33	111,361.31
T-4	265,392.73	111,586.65
T-5	266,834.07	111,232.02
T-6	265,372.31	111,356.65
T-7	266,293.30	110,562.46
T-8	266,433.69	110,536.49
T-9	266,761.97	110,408.26
T-10	269,518.22	110,221.72
T-11	269,308.42	110,007.89



F.M. 21145

A2 OF A4

DETAIL "A"

DETAIL "B"

DETAIL "C"

DETAIL "D"

DETAIL "E"

DETAIL "F"

DETAIL "G"

DETAIL "H"

DETAIL "I"

DETAIL "J"

DETAIL "K"

DETAIL "L"

DETAIL "M"

DETAIL "N"

DETAIL "O"

DETAIL "P"

DETAIL "Q"

DETAIL "R"

DETAIL "S"

DETAIL "T"

DETAIL "U"

DETAIL "V"

DETAIL "W"

DETAIL "X"

DETAIL "Y"

DETAIL "Z"

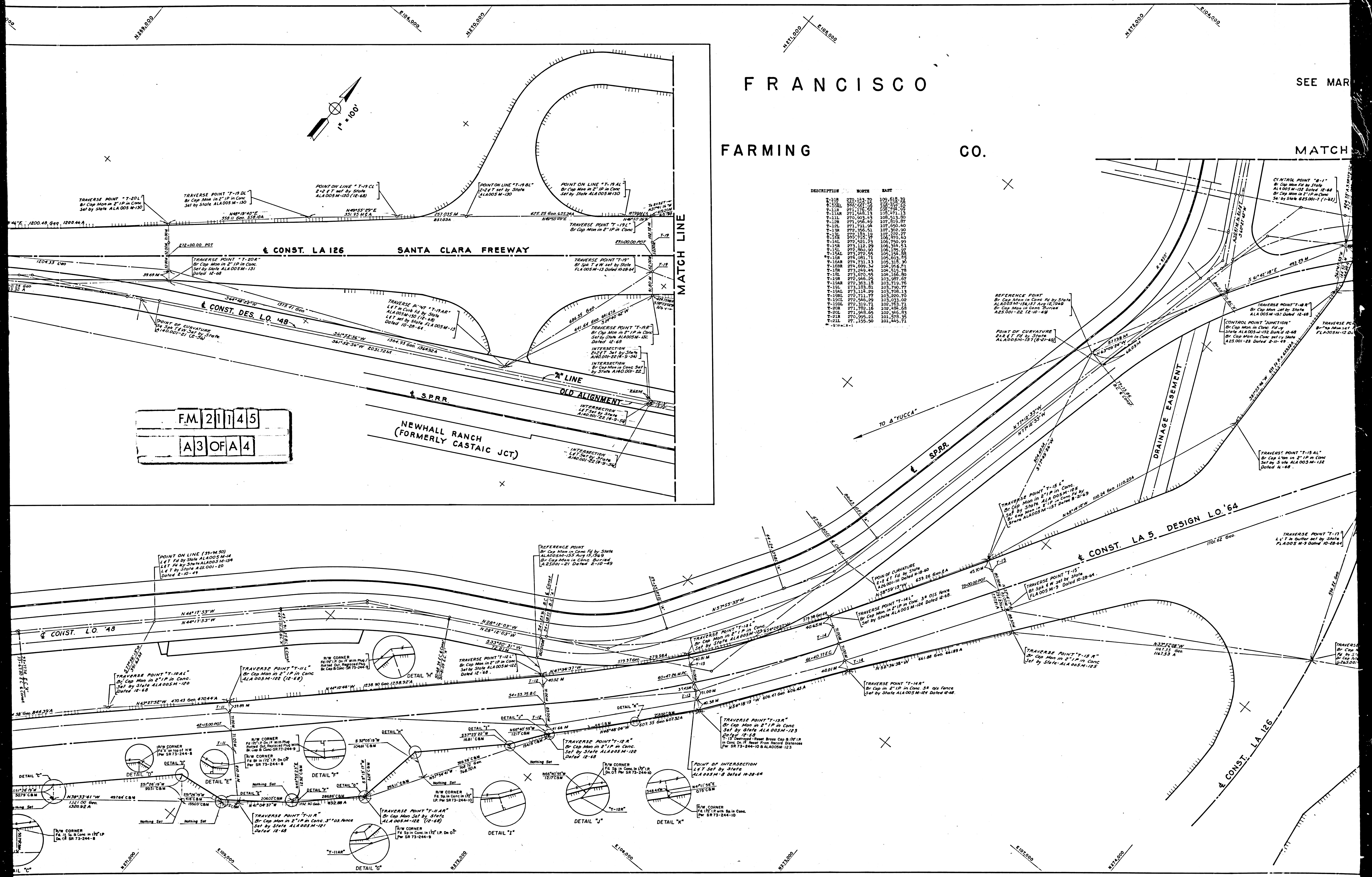
# FRANCISCO

SEE MAR

## FARMING

## CO.

MATCH



DESCRIPTION	NORTH	EAST
T-10R	270,343.70	109,618.90
T-10L	270,343.70	109,618.90
T-11R	271,176.28	109,724.05
T-11L	271,176.28	109,724.05
T-12R	270,903.43	108,513.80
T-12L	271,956.40	107,819.90
T-13R	272,356.51	107,369.90
T-13L	271,791.94	107,690.80
T-14R	272,710.37	106,870.40
T-14L	272,521.23	106,790.90
T-15R	273,112.29	106,344.51
T-15L	272,904.97	106,264.97
T-16R	273,272.55	105,724.86
T-16L	273,061.71	105,643.85
T-17R	274,731.13	104,319.82
T-17L	274,599.34	104,256.81
T-18R	273,249.45	104,519.78
T-18L	273,070.55	104,456.80
T-19R	272,945.25	103,987.07
T-19L	272,763.18	103,919.76
T-20R	273,103.81	103,796.77
T-20L	272,914.29	103,708.13
T-21R	272,711.77	103,220.70
T-21L	272,540.29	103,033.02
T-22R	272,319.71	102,763.71
T-22L	272,161.16	102,584.68
T-23R	271,948.69	102,346.93
T-23L	271,795.21	102,178.35
T-24R	271,555.50	101,945.71
T-24L	271,402.02	101,777.13

F.M. 21145  
A3 OF A4

REFERENCE POINT  
By Cap Mon in Conc. Fd by State  
ALA 005M-156, 157 Dated 12-68  
By Cap Mon in Conc. Fd by State  
ALA 005M-151 Dated 12-68  
ALA 001-22 Dated 12-68

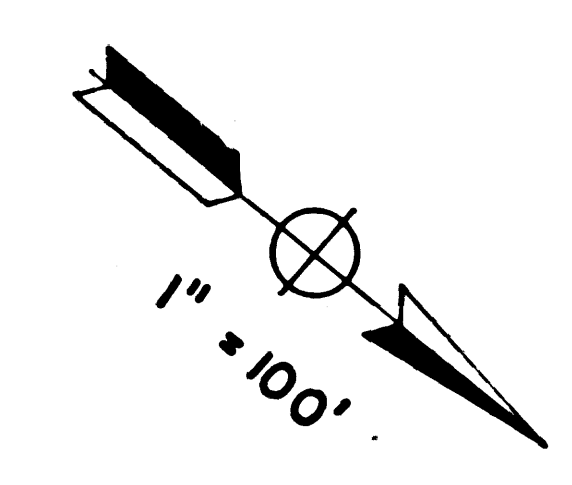
TRAVERSE POINT T-15 L  
By Cap Mon in Conc. Fd by State  
ALA 005M-156, 157 Dated 12-68  
By Cap Mon in Conc. Fd by State  
ALA 005M-151 Dated 12-68  
By State ALA 005M-157 Dated 12-68

TRAVERSE POINT T-15 R  
By Cap Mon in Conc. Fd by State  
ALA 005M-156, 157 Dated 12-68  
By Cap Mon in Conc. Fd by State  
ALA 005M-151 Dated 12-68  
By State ALA 005M-157 Dated 12-68

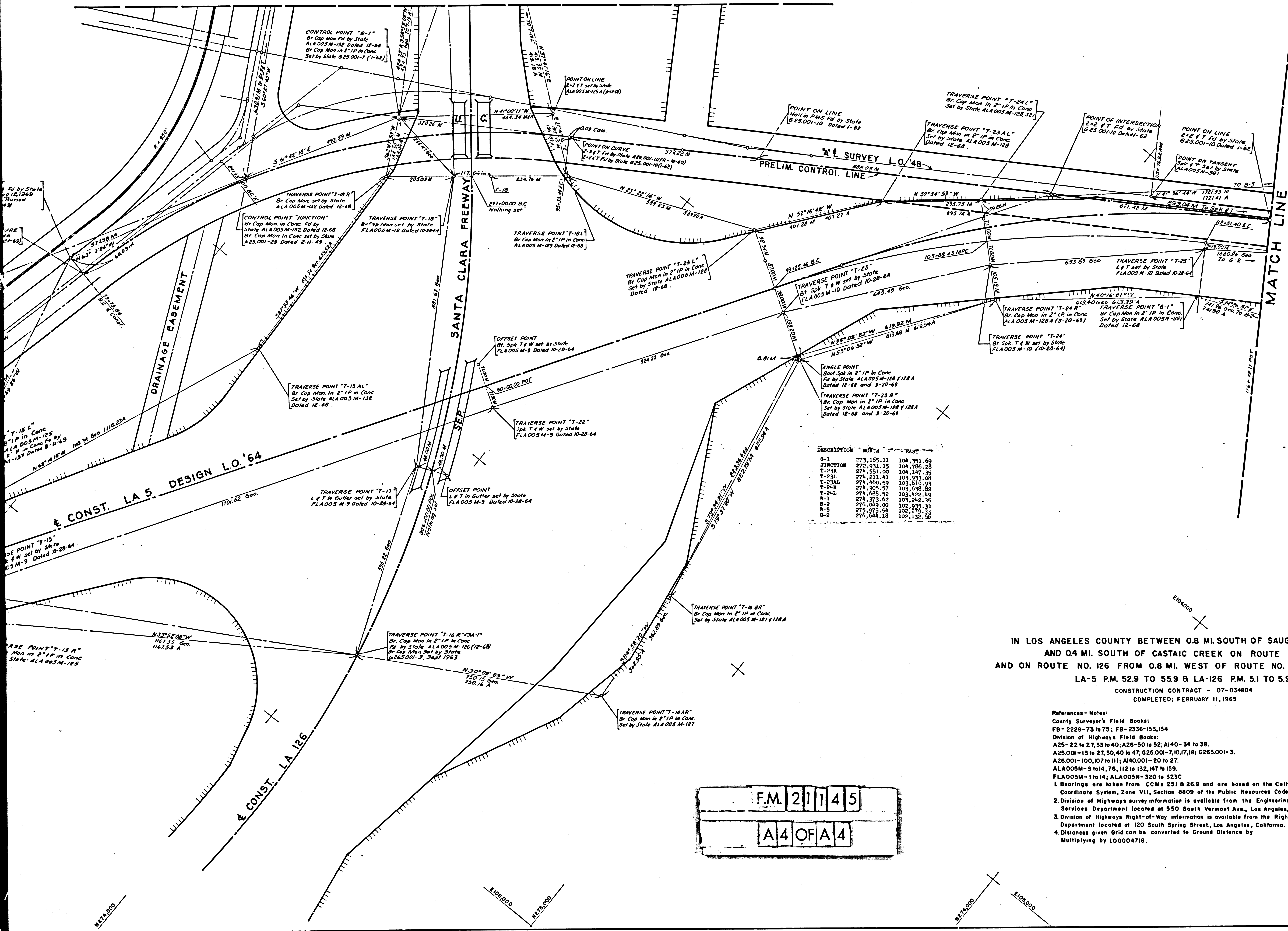
TRAVERSE POINT T-13 R  
By Cap Mon in Conc. Fd by State  
ALA 005M-123 Dated 12-68  
By State ALA 005M-123 Dated 12-68

TRAVERSE POINT T-13 L  
By Cap Mon in Conc. Fd by State  
ALA 005M-123 Dated 12-68  
By State ALA 005M-123 Dated 12-68

SEE MARGINAL MAP



MATCH LINE



SEE MF 4024-1

DESCRIPTION	NORTH	EAST
0-1	273,165.11	104,351.69
JUNCTION	272,931.15	104,796.28
T-23R	274,251.00	104,147.35
T-23L	274,251.91	103,933.08
T-23AL	274,460.99	103,610.93
T-24R	274,205.97	103,436.88
T-24L	274,596.92	103,422.49
B-1	270,373.68	103,242.44
B-2	270,049.00	102,935.33
Q-2	270,275.54	102,793.50
Q-3	270,244.18	102,132.66

IN LOS ANGELES COUNTY BETWEEN 0.8 MI. SOUTH OF SAUGUS JUNCTION  
 AND 0.4 MI. SOUTH OF CASTAIC CREEK ON ROUTE NO. 5  
 AND ON ROUTE NO. 126 FROM 0.8 MI. WEST OF ROUTE NO. 5 TO RTE. NO. 5  
 LA-5 P.M. 52.9 TO 55.9 & LA-126 P.M. 51 TO 5.9  
 CONSTRUCTION CONTRACT - 07-034804  
 COMPLETED: FEBRUARY 11, 1965

- References - Notes:
- County Surveyor's Field Books: FB-2229-73 to 75; FB-2336-153,154
  - Division of Highways Field Books: A25-22 to 27, 35 to 40; A26-50 to 52; A140-34 to 38; A25.001-13 to 27, 30, 40 to 47; G25.001-7,10,17,18; G265.001-3; A26.001-100,107 to 111; A40.001-20 to 27; ALA005M-9 to 14, 76, 112 to 132, 147 to 159; FLA005M-1 to 14; ALA005M-320 to 323C
  - Bearings are taken from CCMs 251 B 26.9 and are based on the California Coordinate System, Zone VII, Section 8809 of the Public Resources Code.
  - Division of Highways survey information is available from the Engineering Services Department located at 550 South Vermont Ave., Los Angeles, California.
  - Division of Highways Right-of-Way information is available from the Right-of-Way Department located at 120 South Spring Street, Los Angeles, California.
  - Distances given here can be converted to Ground Distance by Multiplying by LO0004718.

F.M. 21145  
 A4 OF A4

NO.	DATE	NAME	DESCRIPTION	CHECKED
1.	8-27-73	Heath	Added Lines & Cont. Trac. Pts. T-24R to T-24L	18M

REVISIONS	DATE	NAME	DESCRIPTION	CHECKED

NO.	DATE	NAME	DESCRIPTION	CHECKED