

SECTION 36  
T.5N., R.17W., S.B.B.&M.

FRONTAGE RD.-DES L.O.'66  
RECORD CURVE DATA

NO	RADIUS	DELTA	TANGENT LENGTH
1	4482	32°29'27"	1306.00
2	100	79°47'24"	83.60
3	4718	11°23'46"	470.76
4	2000	11°01'36"	193.05
5	2000	7°31'30"	131.62
6	650	57°18'51"	355.23
7	300	92°26'13"	313.04
8	12.2	18°48'15"	200.69
9	1000	12°44'09"	111.60
10	1000	16°45'25"	147.88
11	900	31°16'40"	251.94
12	3200	30°50'24"	100.70
13	800	29°57'27"	214.04
14	800	38°42'40"	449.94
15	800	19°58'01"	140.82
16	2000	7°38'27"	193.56

SEE MF 4024-1

MATCH

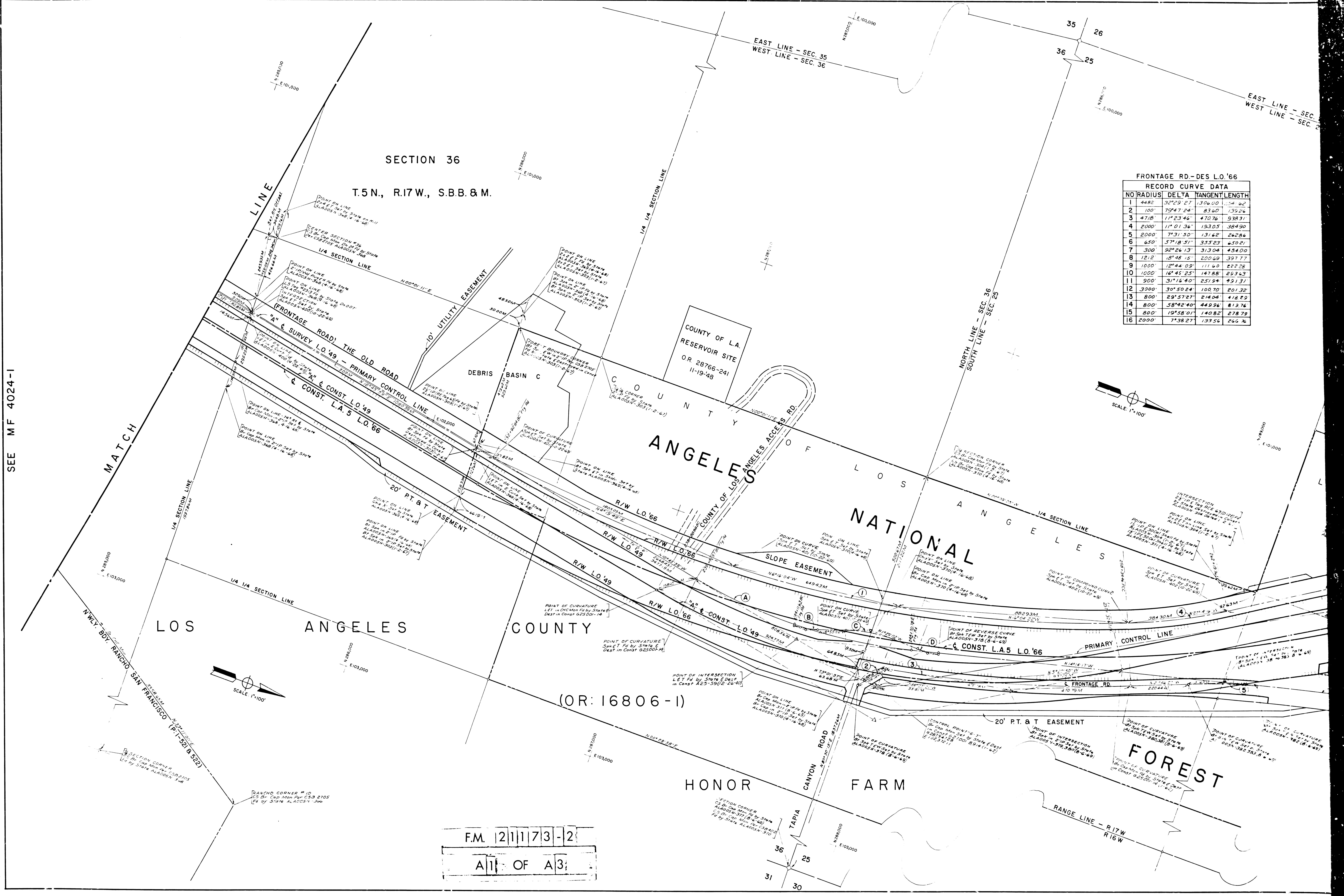
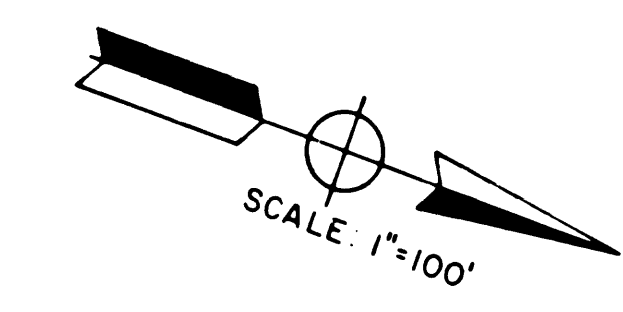
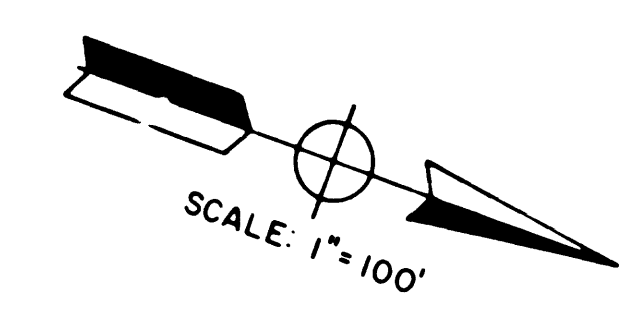
LOS ANGELES COUNTY  
ANGELES NATIONAL FOREST

(OR: 16806-1)

HONOR FARM

FOREST

F.M. 211173-2  
A1 OF A3



26

25

SECTION 26

T.5N., R.17W., S.B.B. & M.

F.M. 21173-2

A2 OF A3

EAST LINE - SEC. 26  
WEST LINE - SEC. 25

EAST LINE - SEC. 26  
WEST LINE - SEC. 25

FRONTAGE RD.-DES L.O.'66

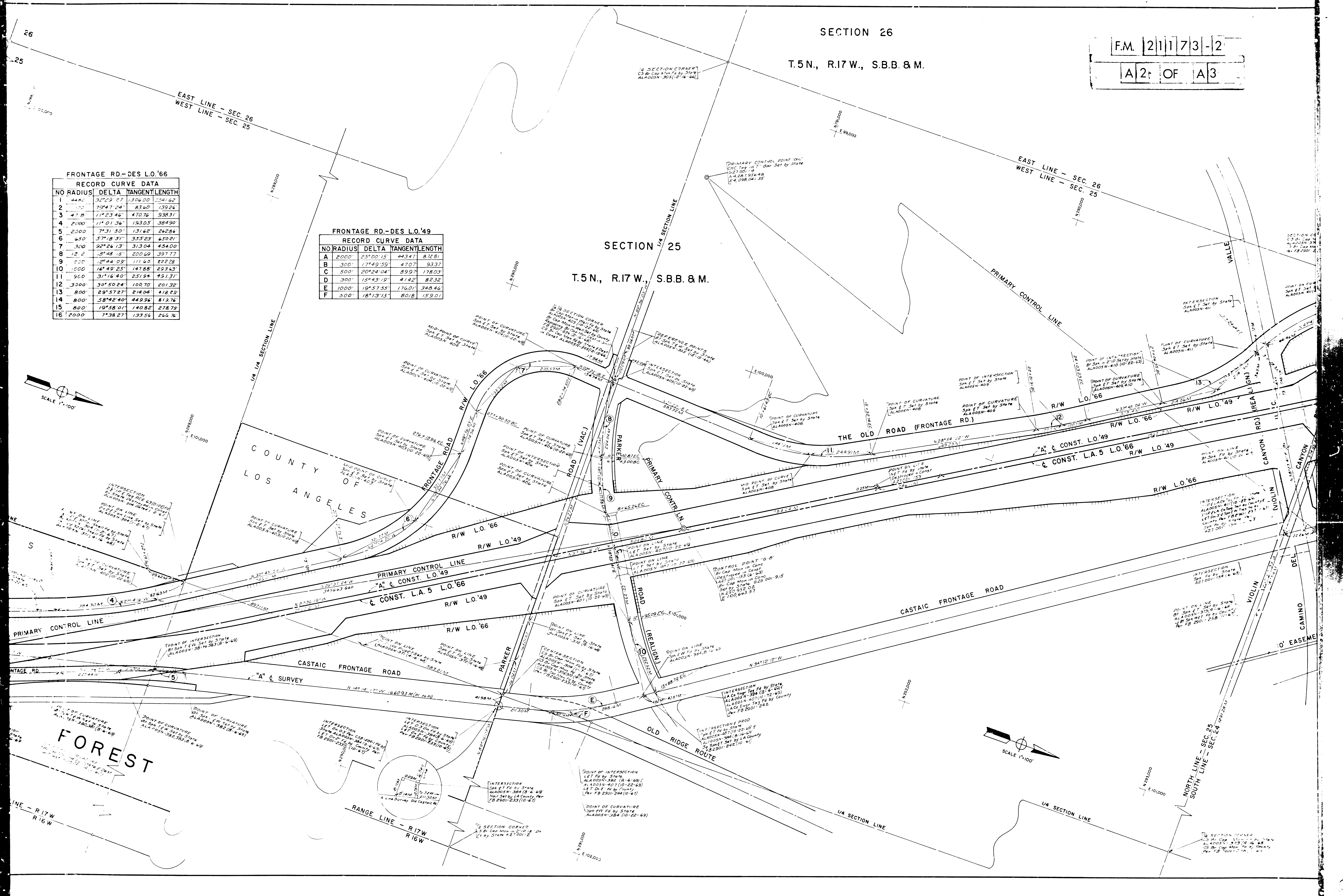
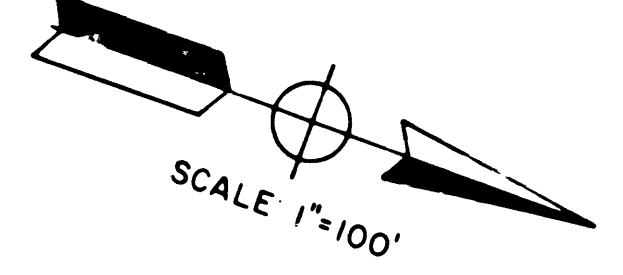
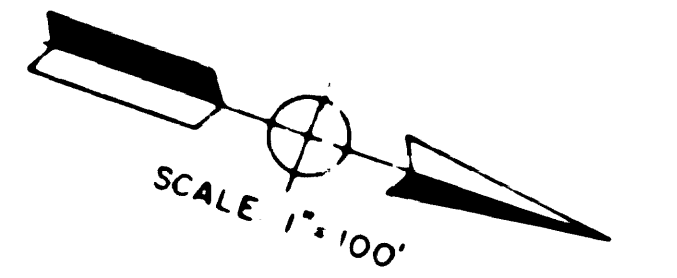
NO	RADIUS	DELTA	TANGENT	LENGTH
1	4400	32°23'27"	1304.00	2541.62
2	1000	75°47'24"	83.60	139.24
3	47.8	71°23'46"	470.76	938.31
4	2000	11°01'36"	193.05	384.90
5	2000	7°31'50"	131.62	262.86
6	450	57°18'51"	355.23	650.21
7	300	92°26'13"	313.04	434.00
8	12.2	18°48'15"	200.69	397.77
9	200	12°44'09"	111.60	222.28
10	1000	16°49'25"	147.88	293.63
11	900	31°16'40"	251.94	491.31
12	3000	30°50'24"	100.70	201.32
13	800	29°57'27"	214.04	418.29
14	800	58°42'40"	449.96	813.76
15	800	19°58'01"	140.82	278.79
16	2000	7°38'27"	133.54	267.16

FRONTAGE RD.-DES L.O.'49

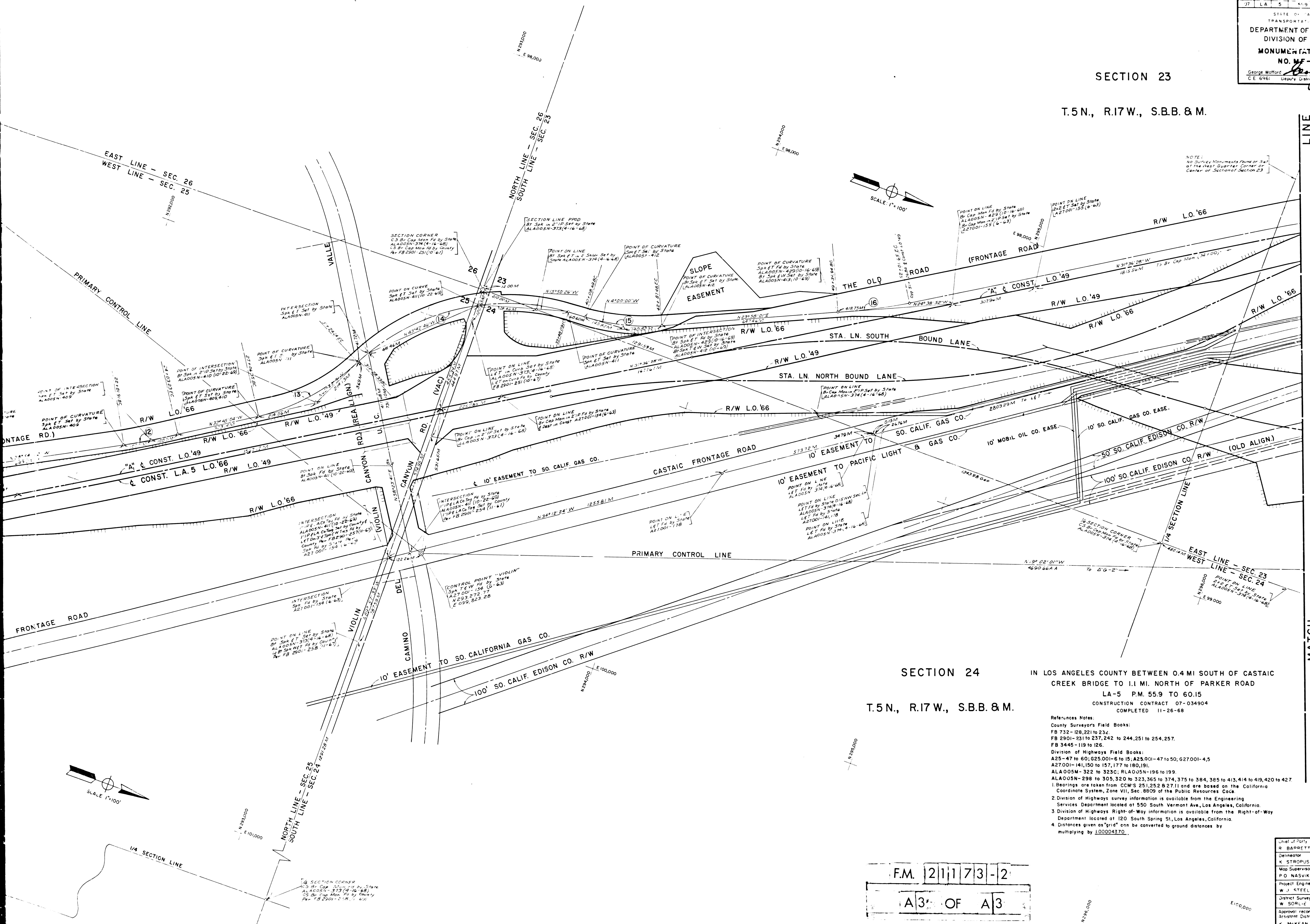
NO	RADIUS	DELTA	TANGENT	LENGTH
A	2000	25°00'15"	443.47	872.81
B	300	17°49'59"	47.07	93.37
C	500	20°24'04"	89.97	178.03
D	300	15°43'19"	41.42	82.32
E	1000	19°57'55"	176.01	348.46
F	300	18°13'15"	80.18	159.01

SECTION 25

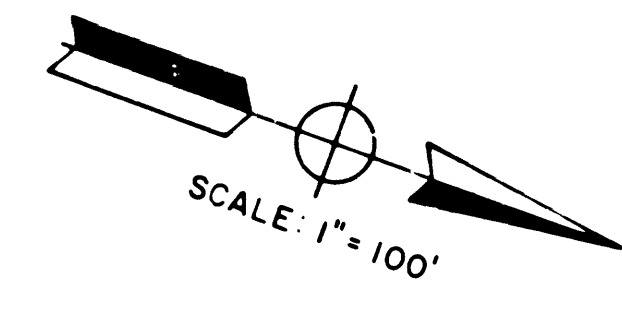
T.5N., R.17W., S.B.B. & M.



SECTION 23  
 T.5N., R.17W., S.B.B. & M.



NOTE:  
 No Survey Monuments Found at Set  
 of the West Quarter Corner of  
 Section 23



LINE

SEE M.F. 4037-1

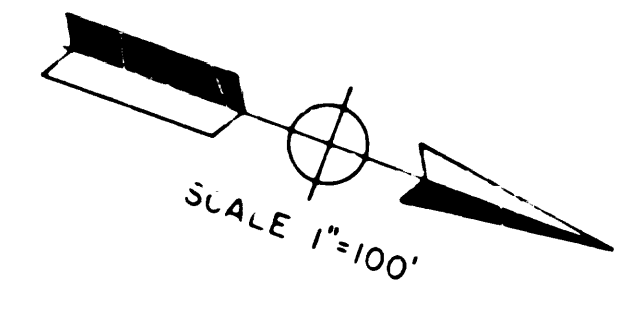
MATCH

SECTION 24

T.5N., R.17W., S.B.B. & M.

IN LOS ANGELES COUNTY BETWEEN 0.4 MI SOUTH OF CASTAIC  
 CREEK BRIDGE TO 1.1 MI. NORTH OF PARKER ROAD  
 LA-5 P.M. 55.9 TO 60.15  
 CONSTRUCTION CONTRACT 07-034904  
 COMPLETED 11-26-68

- References Notes:
- County Surveyors Field Books:  
 FB 732-128,221 to 232  
 FB 2901-231 to 237,242 to 244,251 to 254,257  
 FB 3445-119 to 126.
  - Division of Highways Field Books:  
 A25-47 to 60; G25.001-6 to 15; A25.001-47 to 50; G27.001-4,5  
 A27.001-141,150 to 157,177 to 180,191  
 ALA005M-322 to 323C; RLA005N-196 to 199  
 ALA005N-298 to 305,320 to 323,365 to 374,375 to 384,385 to 413,414 to 419,420 to 427
  - 1. Bearings are taken from CCM'S 251,252 & 271 and are based on the California Coordinate System, Zone VII, Sec. 8809 of the Public Resources Code.
  - 2. Division of Highways survey information is available from the Engineering Services Department located at 550 South Vermont Ave., Los Angeles, California.
  - 3. Division of Highways Right-of-Way information is available from the Right-of-Way Department located at 120 South Spring St., Los Angeles, California.
  - 4. Distances given as "grid" can be converted to ground distances by multiplying by 1.00004370.



F.M. 21173-2  
 A3 OF A3

Name of Party	Date
R. BARRETT	
Director	3/70
K. STORUS	3/70
Map Supervisor	3/70
P.O. NASVIK	3/70
Project Engineer	3/70
W. J. STEELE	3/70
District Survey Engineer	3/70
W. SORLIE	3/70
Approval recommended by Assistant District Engineer	
K. MCKEAN	3/70