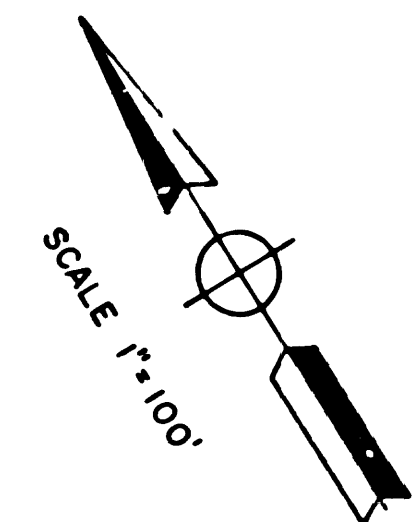


SEE MF 4047-1

F.M. 21177

F.M. 21177
A1 OF A3



SECTION CORNER
LET 26 3/4 Sec 26, T. 26 N., R. 10 E., S. 1/4
BY SHAW ALAB01F-0018
DATE 10/15/54

QUARTER SECTION CORNER
S. 1/4 Sec 26, T. 26 N., R. 10 E., S. 1/4
BY SHAW ALAB01F-0003
DATE 10/15/54

TRACT CORNER
E. 1/4 Sec 26, T. 26 N., R. 10 E., S. 1/4
BY SHAW ALAB01F-0018
DATE 10/15/54

C. 1/4 SEC. 26 OF S. 2
E. 1/4 Sec 26, T. 26 N., R. 10 E., S. 1/4
BY SHAW ALAB01F-0018
DATE 10/15/54

TRACT CORNER
E. 1/4 Sec 26, T. 26 N., R. 10 E., S. 1/4
BY SHAW ALAB01F-0018
DATE 10/15/54

CSB-933-1

MATCH LINE

SECTION LINE

SECTION LINE

SECTION LINE

SECTION LINE

SECTION LINE

R/W

R/W

R/W

R/W

R/W

R/W

R/W

R/W

R/W

INTERSECTION
LET 26 3/4 Sec 26, T. 26 N., R. 10 E., S. 1/4
BY SHAW ALAB01F-0003
DATE 10/15/54

R/W

R/W

R/W

R/W

R/W

R/W

R/W

R/W

R/W

R/W

CONST LO'57

CONST LO'57

CONST LO'57

CONST LO'57

CONST LO'57

CONST LO'57

R/W

R/W

R/W

R/W

R/W

R/W

R/W

R/W

R/W

R/W

CONST LO'57

CONST LO'57

CONST LO'57

CONST LO'57

CONST LO'57

CONST LO'57

R/W

R/W

R/W

R/W

R/W

R/W

R/W

R/W

R/W

R/W

CONST LO'57

CONST LO'57

CONST LO'57

CONST LO'57

CONST LO'57

CONST LO'57

R/W

R/W

R/W

R/W

R/W

R/W

R/W

R/W

R/W

R/W

CONST LO'57

CONST LO'57

CONST LO'57

CONST LO'57

CONST LO'57

CONST LO'57

R/W

R/W

R/W

R/W

R/W

R/W

R/W

R/W

R/W

R/W

CONST LO'57

CONST LO'57

CONST LO'57

CONST LO'57

CONST LO'57

CONST LO'57

R/W

R/W

R/W

R/W

R/W

R/W

R/W

R/W

R/W

R/W

CONST LO'57

CONST LO'57

CONST LO'57

CONST LO'57

CONST LO'57

CONST LO'57

R/W

R/W

R/W

R/W

R/W

R/W

R/W

R/W

R/W

R/W

CONST LO'57

CONST LO'57

CONST LO'57

CONST LO'57

CONST LO'57

CONST LO'57

R/W

R/W

R/W

R/W

R/W

R/W

R/W

R/W

R/W

R/W

CONST LO'57

CONST LO'57

CONST LO'57

CONST LO'57

CONST LO'57

CONST LO'57

R/W

R/W

R/W

R/W

R/W

R/W

R/W

R/W

R/W

R/W

CONST LO'57

CONST LO'57

CONST LO'57

CONST LO'57

CONST LO'57

CONST LO'57

R/W

R/W

R/W

R/W

R/W

R/W

R/W

R/W

R/W

R/W

CONST LO'57

CONST LO'57

CONST LO'57

CONST LO'57

CONST LO'57

CONST LO'57

R/W

R/W

R/W

R/W

R/W

R/W

R/W

R/W

R/W

R/W

CONST LO'57

CONST LO'57

CONST LO'57

CONST LO'57

CONST LO'57

CONST LO'57

R/W

R/W

R/W

R/W

R/W

R/W

R/W

R/W

R/W

R/W

CONST LO'57

CONST LO'57

CONST LO'57

CONST LO'57

CONST LO'57

CONST LO'57

R/W

R/W

R/W

R/W

R/W

R/W

R/W

R/W

R/W

R/W

CONST LO'57

CONST LO'57

CONST LO'57

CONST LO'57

CONST LO'57

CONST LO'57

R/W

R/W

R/W

R/W

R/W

R/W

R/W

R/W

R/W

R/W

CONST LO'57

CONST LO'57

CONST LO'57

CONST LO'57

CONST LO'57

CONST LO'57

R/W

R/W

R/W

R/W

R/W

R/W

R/W

R/W

R/W

R/W

CONST LO'57

CONST LO'57

CONST LO'57

CONST LO'57

CONST LO'57

CONST LO'57

R/W

R/W

R/W

R/W

R/W

R/W

R/W

R/W

R/W

R/W

CONST LO'57

CONST LO'57

CONST LO'57

CONST LO'57

CONST LO'57

CONST LO'57

R/W

R/W

R/W

R/W

R/W

R/W

R/W

R/W

R/W

R/W

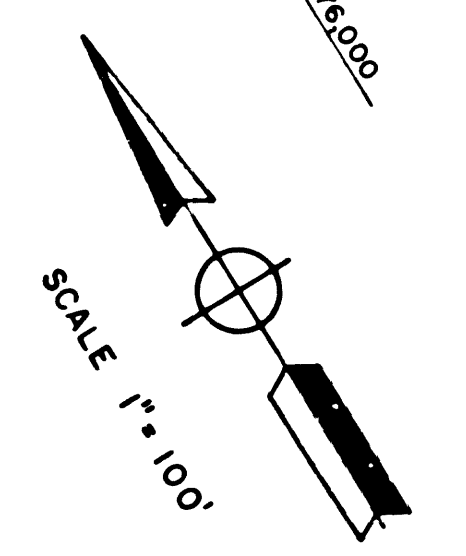
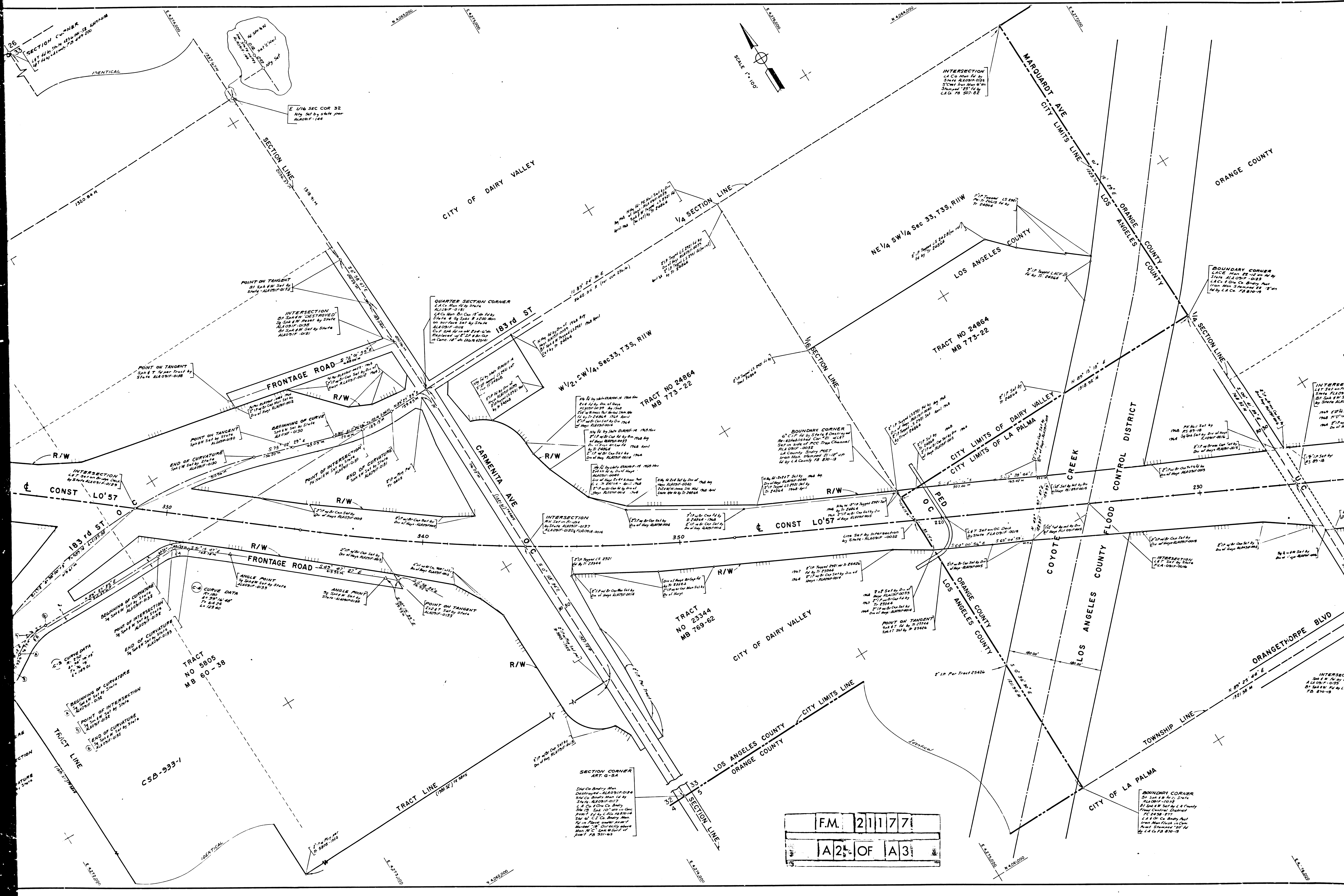
CONST LO'57

CONST LO'57

CONST LO'57

CONST LO'57

CONST LO'57



F.M. 21177
 A2 OF A3

SECTION CUMBER
 1st 1/4 Sec 33, T35, R11W
 1st 1/4 Sec 33, T35, R11W
 1st 1/4 Sec 33, T35, R11W

TRACT NO 5805
 MB 60-38

TRACT NO 24864
 MB 773-22

TRACT NO 23344
 MB 769-62

TRACT NO 24864
 MB 773-22

BOUNDARY CORNER
 1st 1/4 Sec 33, T35, R11W
 1st 1/4 Sec 33, T35, R11W
 1st 1/4 Sec 33, T35, R11W

SECTION CORNER
 ART. G-3A
 1st 1/4 Sec 33, T35, R11W
 1st 1/4 Sec 33, T35, R11W
 1st 1/4 Sec 33, T35, R11W

TRACT LINE
 CSB-933-1

CONTROL DISTRICT

CITY OF DAIRY VALLEY

LOS ANGELES COUNTY
 ORANGE COUNTY

LOS ANGELES COUNTY
 ORANGE COUNTY

CITY OF LA PALMA

ORANGE COUNTY

MARGUARDT AVE
 CITY LIMITS LINE

LOS ANGELES COUNTY
 ORANGE COUNTY

CITY OF DAIRY VALLEY

CONST LO'57

CONST LO'57

230

220

340

350

330

340

350

360

370

380

390

400

410

420

430

26

27

28

29

30

31

32

33

440

450

460

470

480

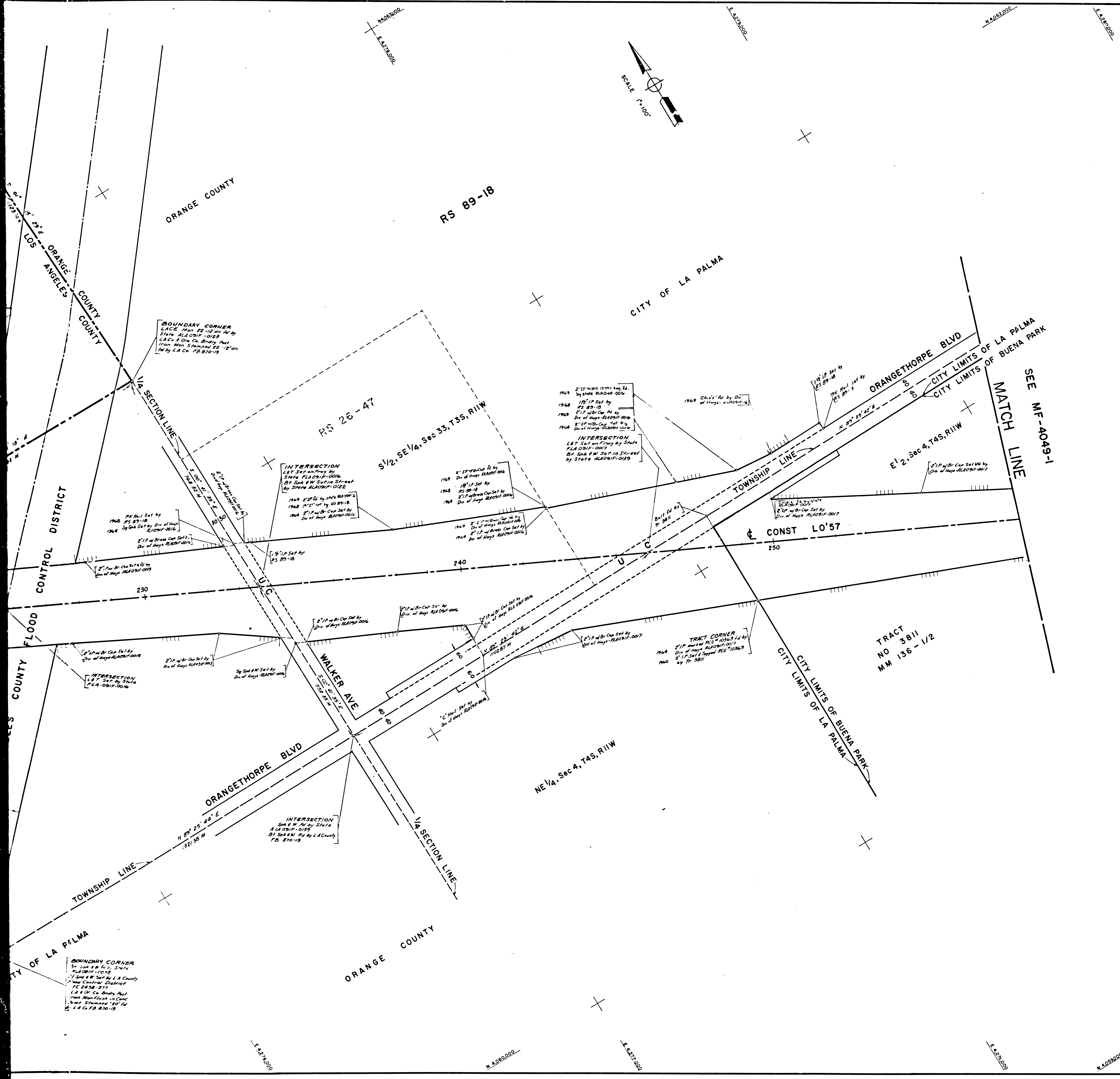
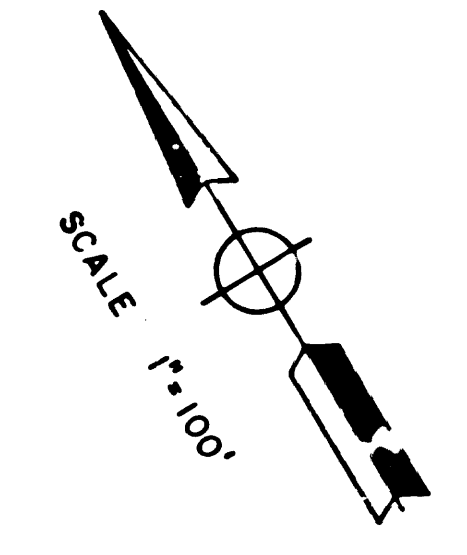
490

500

510

520

530



IN LOS ANGELES AND ORANGE COUNTIES IN CITIES OF
CERRITOS, LA PALMA AND BUENA PARK BETWEEN ANTESIA
BOULEVARD AND 0.2 MILES WEST OF VALLEY VIEW ST.
PM R19.4-R20.7/R.O.-R.O.8
Construction Contract 07-009574
Completed 8-49

- Reference Notes:
LA County Surveyor's Field Books:
FB 425-141, FB 449-196, 198, 200, FB 507-82, 85
FB 931-63, FB 870-13, 14
LA County Flood Control District:
FC 245B-277
LA County Tract Maps:
Tr. 23106-MB 770-16, Tr. 5805-MB 60-36, Tr. 24064-MB 773-22/24
Tr. 23344-MB 769-61/62, Tr. 25426-MB 759-62/64
Orange County Tract Maps:
Tr. 3811-MB 136-1/2, Tr. 2785-MB 100-39/41
Record of Survey:
RS 89-18, RS 26-47
Division of Highways Field Books:
FLA 091F-0010-0017
ALA 091F-0105-0148
RLA 091F-0006-0043

- Bearings are taken from CCM 236.6-C and are based on the California Coordinate System, Zone 6and7, Sec. 880B and 880C of Public Resources Code.
- Division of Highways survey information is available from the Engineering Services Department located at 550 South Vermont Ave Los Angeles, California.
- Division of Highways Right-of-Way Information is available from the Right-of-Way Department located at 120 South Spring St., Los Angeles California.

F.M. 21177
A3 OF A3

Chief of Party	J. Washburn	8/69
Designer & Computed by	K. Moore	4/70
Map Supervisor	J. W. Muesonde	4/70
Project Engineer	H. W. Griffin	4/70
District Survey Engineer	W. C. Sorlie	4/70
Approver recommended by	Assistant District Engineer	
	K. E. McKeon	4/70