

BIGBY'S

TOWNSITE

CITY

FARMS

PARK

ST.

PARK

ST.

M.B. 71 - 1

CONST.

L.A. 91

BEACH

A C R

CALIFORNIA

COOPERATIVE

COLONY

M.R 21 - 15/16

B E L L

F L

O W E R

BEVERLY

M.B. 16 - 136

N 89° 36' 59" E

1222.77 M

ARTESIA

BLVD.

N 89° 36' 59" E

1465.16 M

M.B. 20 - 11

BLVD.

UC

LINE

MATCH

LAKWOOD

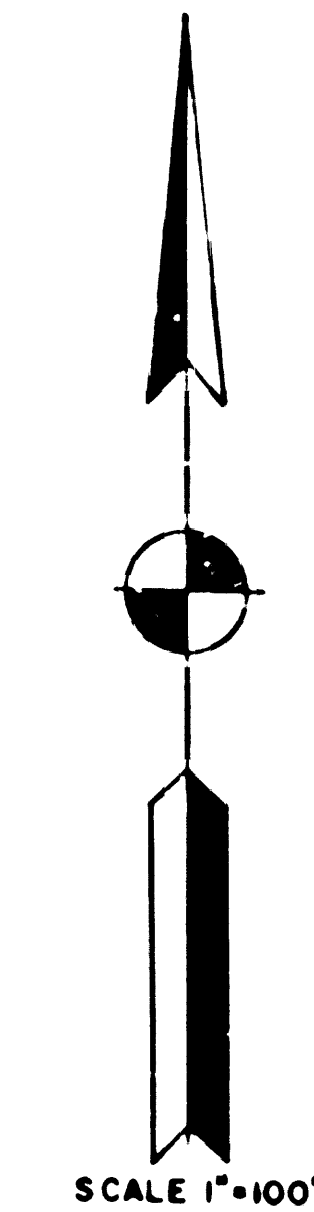
VIRGINIA

TRACT - LINE

CLARK

ARDMORE

AVE.



SCALE 1"=100'

INTERSECTION
N 89° 37' 07" E
2637.03 M

INTERSECTION
N 89° 37' 07" E
2637.03 M

INTERSECTION
N 89° 36' 59" E
1222.77 M

POINT ON E
88.5 M SET BY STATE
PER ALA 0916-0058 4/67

POINT ON E
75.5 M SET BY STATE
PER ALA 0916-0058 4/67

INTERSECTION
N 89° 37' 07" E
2637.03 M

POINT ON E
75.5 M SET BY STATE
PER ALA 0916-0058 4/67

POINT ON E INTERSECTION
75.5 M SET BY STATE
PER ALA 0916-0058 4/67

INTERSECTION
N 89° 36' 59" E
1222.77 M

INTERSECTION
N 89° 36' 59" E
1222.77 M

INTERSECTION
N 89° 36' 59" E
1222.77 M

INTERSECTION
N 89° 36' 59" E
1222.77 M

INTERSECTION
N 89° 36' 59" E
1222.77 M

INTERSECTION
N 89° 36' 59" E
1222.77 M

INTERSECTION
N 89° 36' 59" E
1222.77 M

INTERSECTION
N 89° 36' 59" E
1222.77 M

INTERSECTION
N 89° 36' 59" E
1222.77 M

INTERSECTION
N 89° 36' 59" E
1222.77 M

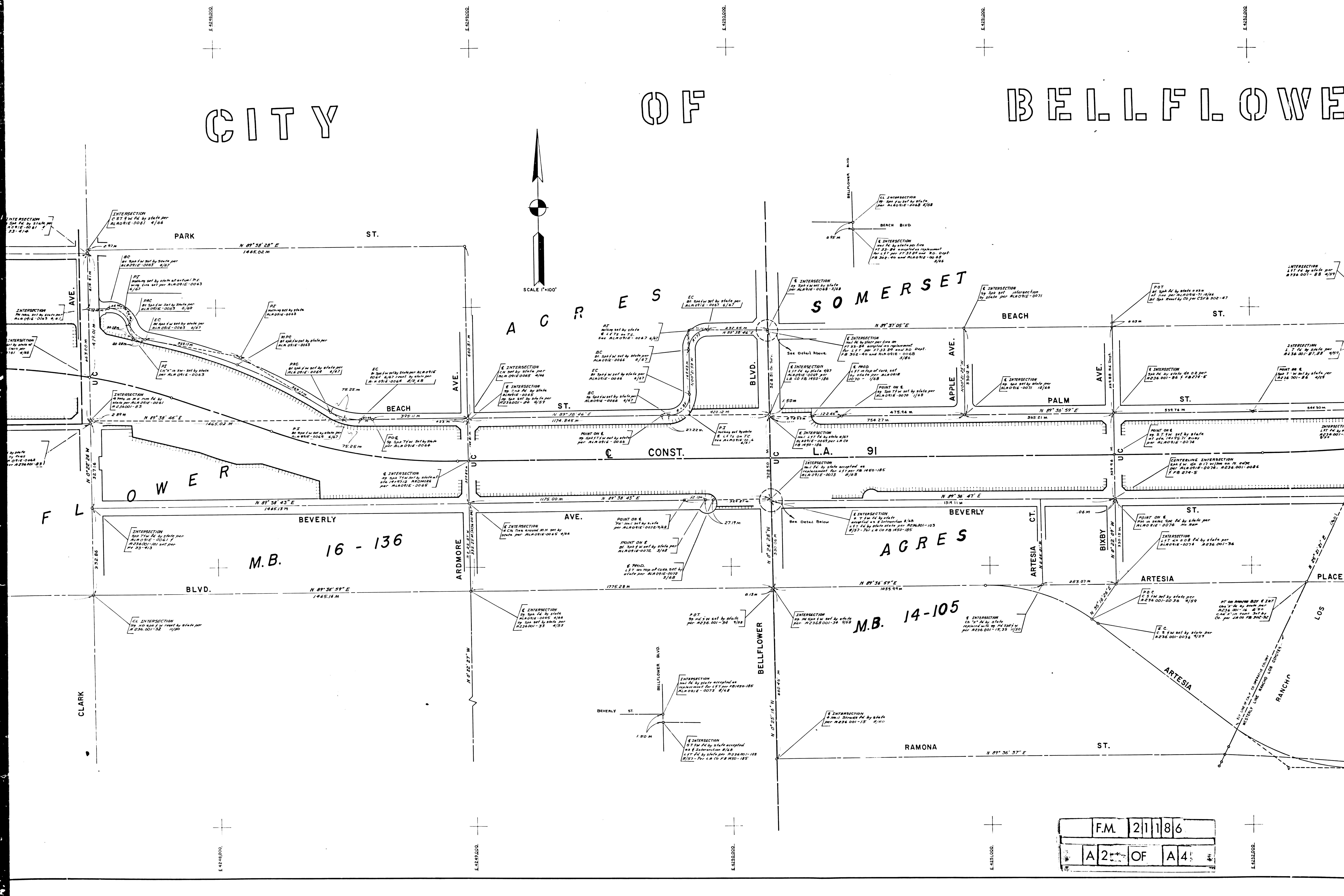
INTERSECTION
N 89° 36' 59" E
1222.77 M

F.M. 211786
A1 OF A4

CITY

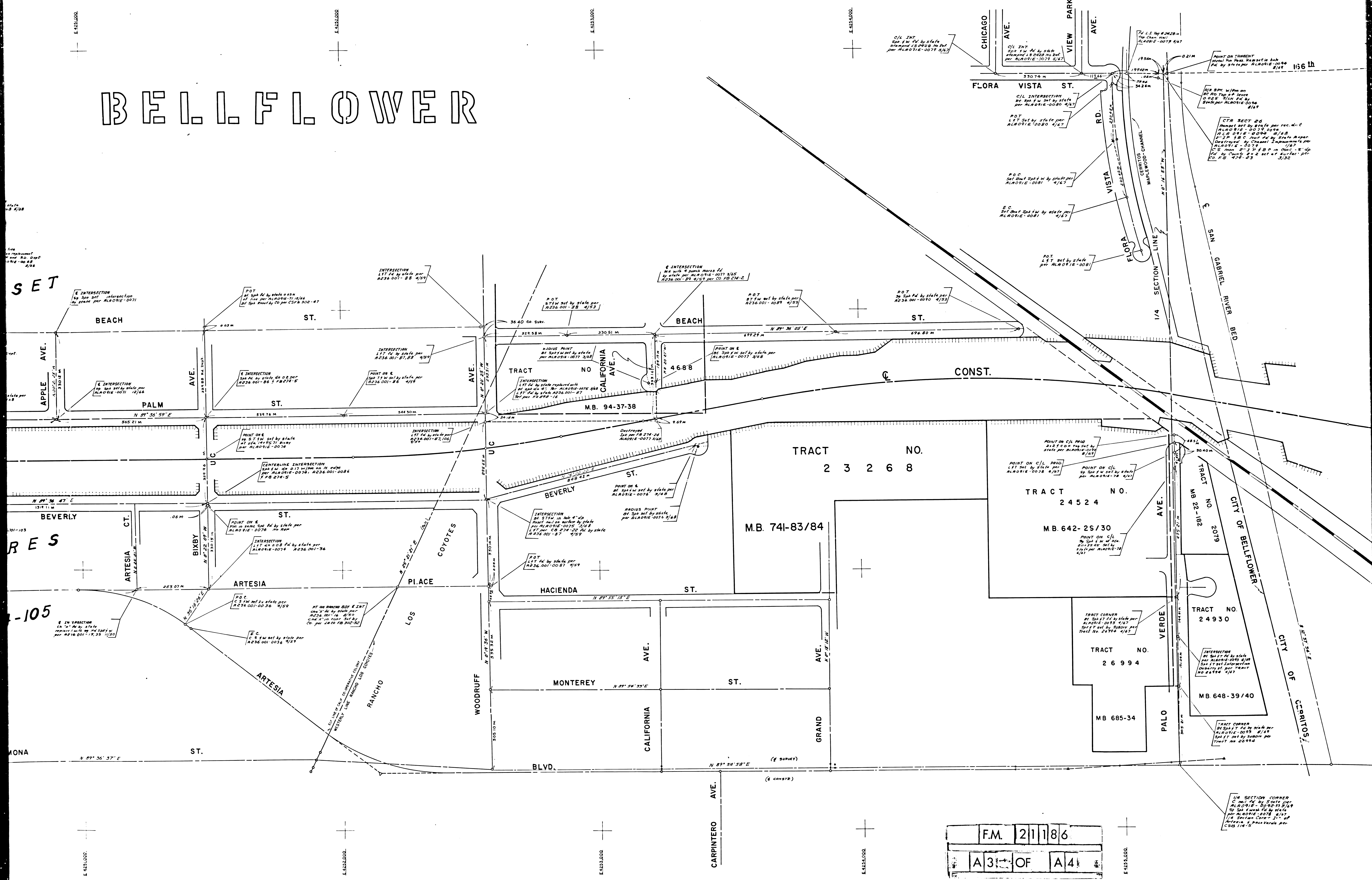
OF

BELFLOWER



F.M. 21186
 A2 OF A4

BELFLOWER



SET

RES

-105

MONA

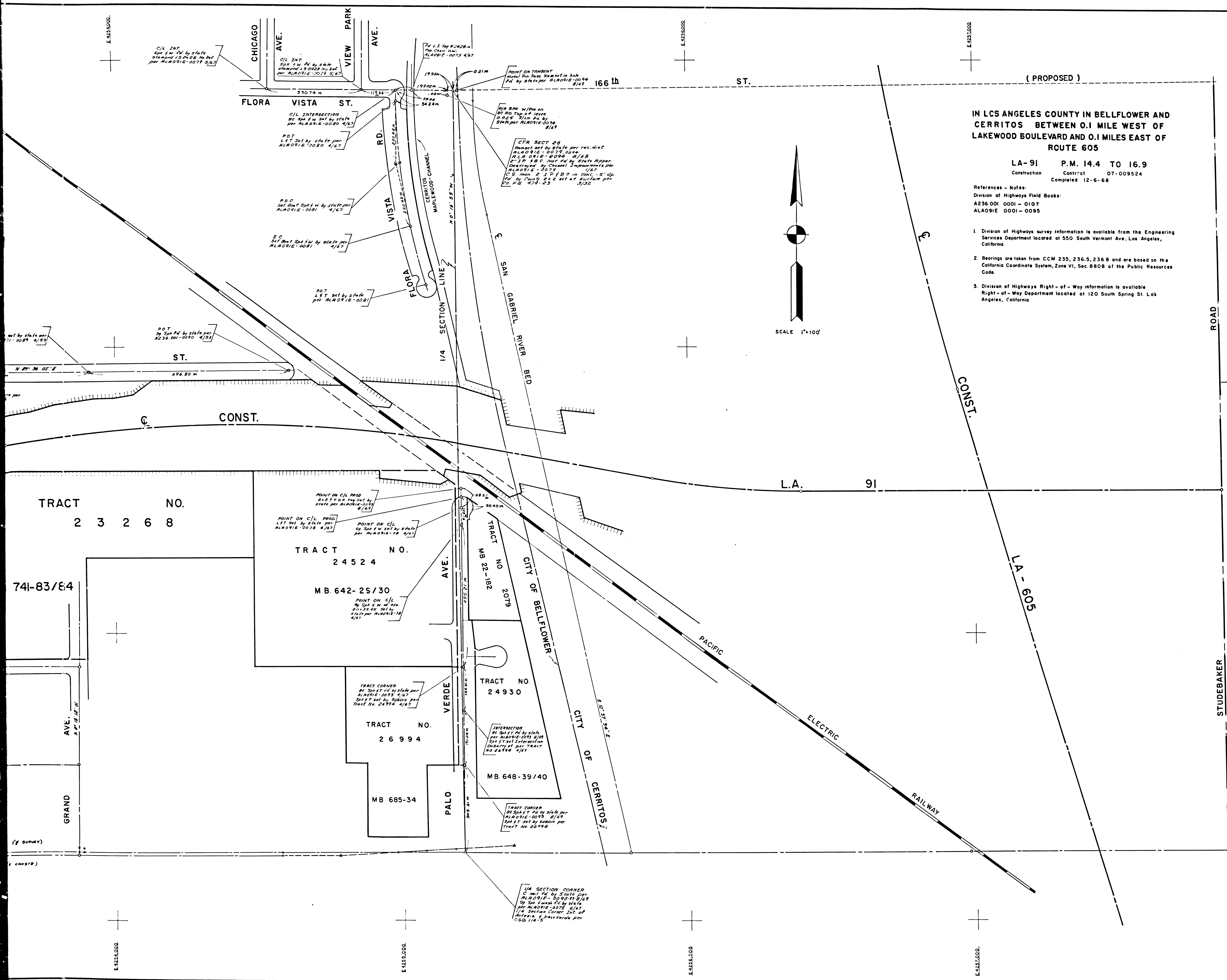
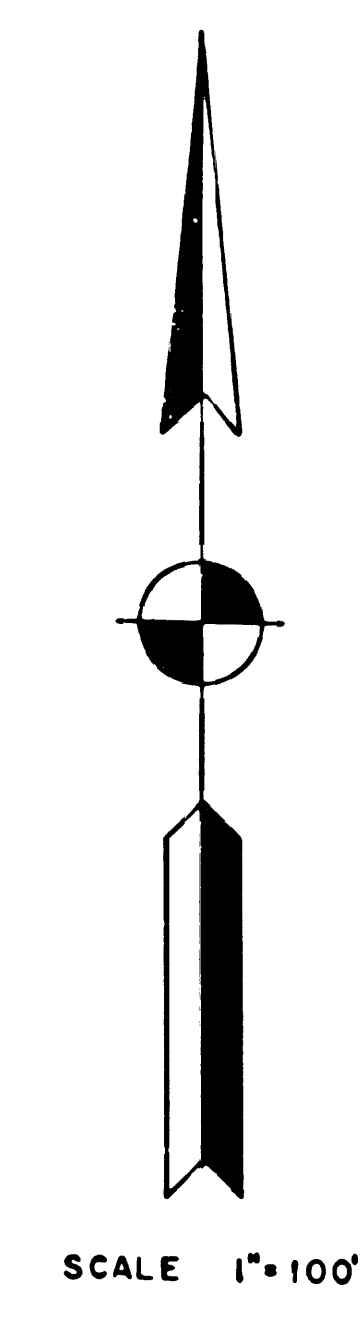
F.M. 21186
A3 OF A4

IN LOS ANGELES COUNTY IN BELLFLOWER AND CERRITOS BETWEEN 0.1 MILE WEST OF LAKEWOOD BOULEVARD AND 0.1 MILES EAST OF ROUTE 605

LA-91 P.M. 14.4 TO 16.9
 Construction Contract 07-009524
 Completed 12-6-68

References - Notes:
 Division of Highways Field Books:
 A236.001 0001 - 0107
 ALA091E 0001 - 0095

1. Division of Highways survey information is available from the Engineering Services Department located at 550 South Vermont Ave, Los Angeles, California.
2. Bearings are taken from CCM 235, 236.5, 236.8 and are based on the California Coordinate System, Zone VI, Sec. 8808 of the Public Resources Code.
3. Division of Highways Right-of-Way information is available Right-of-Way Department located at 120 South Spring St. Los Angeles, California.



ROAD LINE MATCH

TRACT NO.
2 3 2 6 8

TRACT NO.
2 4 5 2 4

MB. 642-25/30

TRACT NO.
2 0 1 9

TRACT NO.
2 4 9 3 0

TRACT NO.
2 6 9 9 4

MB. 648-39/40

MB. 685-34

F.M. 21186
 A4 OF A4

Checked by	Date
D. EBERLY	
Sr. Designer	3/70
Drawn by	
D. JOHNSON	3/70
Map Supervisor	
P. CHRETIEN	3/70
Project Engineer	
J. STEELE	3/70
District Survey Engineer	
B. SORLIE	3/70
Approval recommended by	
Assistant District Engineer	
K. E. MCKEAN	3/70