

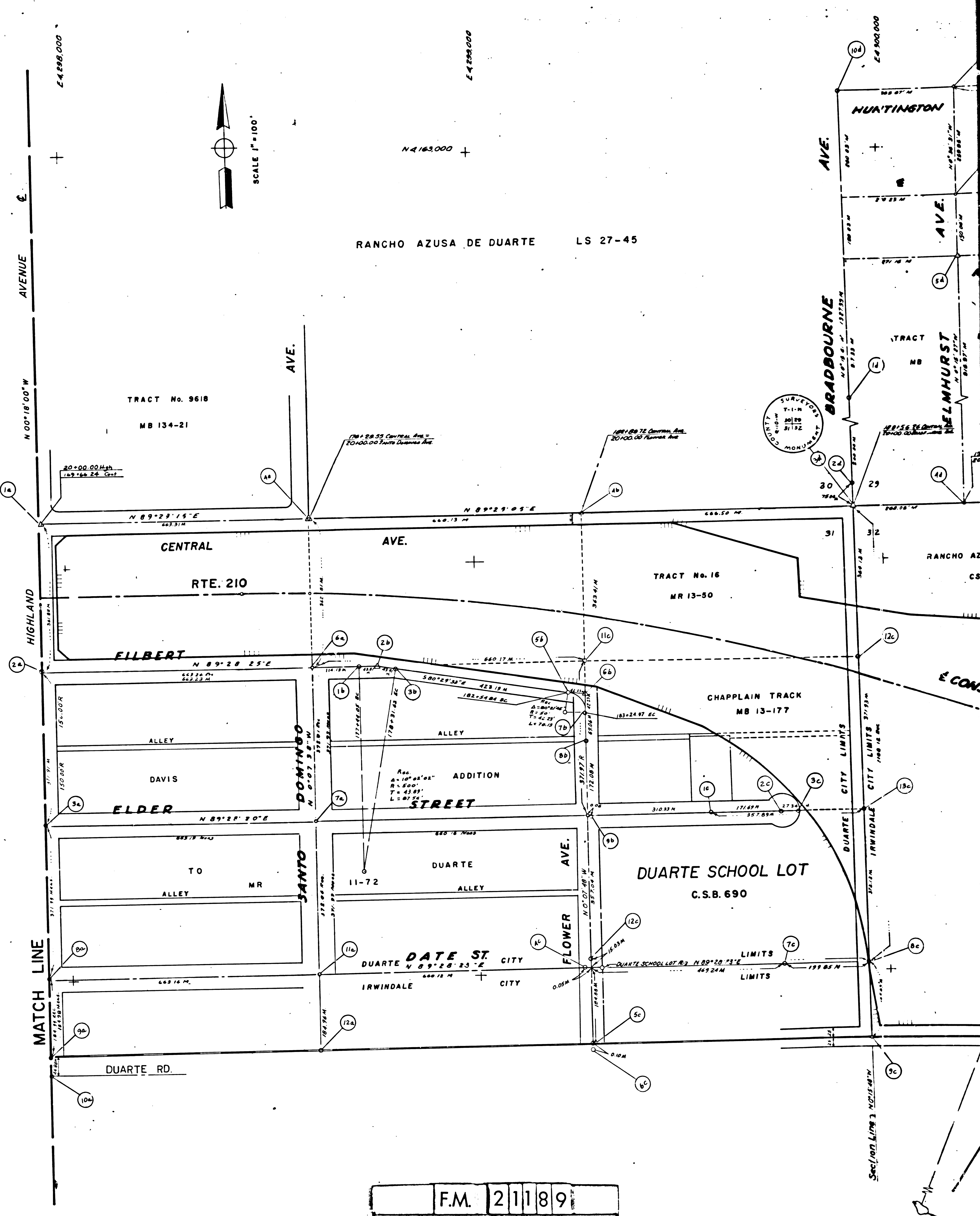
44221000

SEE MF 4063-1

- (1a) INTERSECTION
Rt Spk T & W rd by State
ALAD108-0104 (5-05)
- (2a) INTERSECTION
Spk & W rd by State
ALA 2108-0417 (12/68)
- (3a) INTERSECTION
Spk & W rd by State
ALA 2108-0196 (1-66)
- (4a) INTERSECTION
Rt Spk T & W rd by State
ALAD108-0408 (3/59)
- (5c) INTERSECTION
Spk rd. by State
ALAD108-0407 (5/68)
- (6a) INTERSECTION
1" I.P. plus W rd by State
ALAD108-0417 (12/68)
- (7a) INTERSECTION
S & W rd by State
A332-001-55 (4/50)
- (8a) INTERSECTION
S & W rd by State
A332-001-46 (4/60)
- (9a) INTERSECTION
R.H. nail w/ nail
straddlers rd by State
A332-001-46 (4/60)
- (10a) INTERSECTION
Rt Spk & W rd by State
A332-001-29 (10/50)
- (11a) INTERSECTION
2" IP on split of tracks
C S PB 1976-00 (3/55)
- (12a) INTERSECTION
Rt Spk T & W rd by State
ALAD108-0417 (12/68)
- (13a) INTERSECTION
Rt Spk & W rd by State
ALAD108-0418 (12/68)
- (14a) INTERSECTION
Rt Spk T & W rd by State
ALAD108-0409 (10/68)
- (15a) INTERSECTION
Rt Spk & W rd by State
ALAD108-0418 (12/68)
- (16a) INTERSECTION
Rt Spk & W rd by State
ALAD108-0418 (12/68)
- (17a) INTERSECTION
Rt Spk & W rd by State
ALAD108-0418 (12/68)
- (18a) INTERSECTION
Rt Spk & W rd by State
ALAD108-0418 (12/68)
- (19a) INTERSECTION
Rt Spk & W rd by State
ALAD108-0418 (12/68)
- (20a) INTERSECTION
Rt Spk & W rd by State
ALAD108-0418 (12/68)
- (21a) INTERSECTION
Rt Spk & W rd by State
ALAD108-0418 (12/68)
- (22a) INTERSECTION
Rt Spk & W rd by State
ALAD108-0418 (12/68)
- (23a) INTERSECTION
Rt Spk & W rd by State
ALAD108-0418 (12/68)
- (24a) INTERSECTION
Rt Spk & W rd by State
ALAD108-0418 (12/68)
- (25a) INTERSECTION
Rt Spk & W rd by State
ALAD108-0418 (12/68)
- (26a) INTERSECTION
Rt Spk & W rd by State
ALAD108-0418 (12/68)
- (27a) INTERSECTION
Rt Spk & W rd by State
ALAD108-0418 (12/68)
- (28a) INTERSECTION
Rt Spk & W rd by State
ALAD108-0418 (12/68)
- (29a) INTERSECTION
Rt Spk & W rd by State
ALAD108-0418 (12/68)
- (30a) INTERSECTION
Rt Spk & W rd by State
ALAD108-0418 (12/68)
- (31a) INTERSECTION
Rt Spk & W rd by State
ALAD108-0418 (12/68)
- (32a) INTERSECTION
Rt Spk & W rd by State
ALAD108-0418 (12/68)
- (33a) INTERSECTION
Rt Spk & W rd by State
ALAD108-0418 (12/68)
- (34a) INTERSECTION
Rt Spk & W rd by State
ALAD108-0418 (12/68)
- (35a) INTERSECTION
Rt Spk & W rd by State
ALAD108-0418 (12/68)
- (36a) INTERSECTION
Rt Spk & W rd by State
ALAD108-0418 (12/68)
- (37a) INTERSECTION
Rt Spk & W rd by State
ALAD108-0418 (12/68)
- (38a) INTERSECTION
Rt Spk & W rd by State
ALAD108-0418 (12/68)
- (39a) INTERSECTION
Rt Spk & W rd by State
ALAD108-0418 (12/68)
- (40a) INTERSECTION
Rt Spk & W rd by State
ALAD108-0418 (12/68)
- (41a) INTERSECTION
Rt Spk & W rd by State
ALAD108-0418 (12/68)
- (42a) INTERSECTION
Rt Spk & W rd by State
ALAD108-0418 (12/68)
- (43a) INTERSECTION
Rt Spk & W rd by State
ALAD108-0418 (12/68)
- (44a) INTERSECTION
Rt Spk & W rd by State
ALAD108-0418 (12/68)
- (45a) INTERSECTION
Rt Spk & W rd by State
ALAD108-0418 (12/68)
- (46a) INTERSECTION
Rt Spk & W rd by State
ALAD108-0418 (12/68)
- (47a) INTERSECTION
Rt Spk & W rd by State
ALAD108-0418 (12/68)
- (48a) INTERSECTION
Rt Spk & W rd by State
ALAD108-0418 (12/68)
- (49a) INTERSECTION
Rt Spk & W rd by State
ALAD108-0418 (12/68)
- (50a) INTERSECTION
Rt Spk & W rd by State
ALAD108-0418 (12/68)
- (51a) INTERSECTION
Rt Spk & W rd by State
ALAD108-0418 (12/68)
- (52a) INTERSECTION
Rt Spk & W rd by State
ALAD108-0418 (12/68)
- (53a) INTERSECTION
Rt Spk & W rd by State
ALAD108-0418 (12/68)
- (54a) INTERSECTION
Rt Spk & W rd by State
ALAD108-0418 (12/68)
- (55a) INTERSECTION
Rt Spk & W rd by State
ALAD108-0418 (12/68)
- (56a) INTERSECTION
Rt Spk & W rd by State
ALAD108-0418 (12/68)
- (57a) INTERSECTION
Rt Spk & W rd by State
ALAD108-0418 (12/68)
- (58a) INTERSECTION
Rt Spk & W rd by State
ALAD108-0418 (12/68)
- (59a) INTERSECTION
Rt Spk & W rd by State
ALAD108-0418 (12/68)
- (60a) INTERSECTION
Rt Spk & W rd by State
ALAD108-0418 (12/68)
- (61a) INTERSECTION
Rt Spk & W rd by State
ALAD108-0418 (12/68)
- (62a) INTERSECTION
Rt Spk & W rd by State
ALAD108-0418 (12/68)
- (63a) INTERSECTION
Rt Spk & W rd by State
ALAD108-0418 (12/68)
- (64a) INTERSECTION
Rt Spk & W rd by State
ALAD108-0418 (12/68)
- (65a) INTERSECTION
Rt Spk & W rd by State
ALAD108-0418 (12/68)
- (66a) INTERSECTION
Rt Spk & W rd by State
ALAD108-0418 (12/68)
- (67a) INTERSECTION
Rt Spk & W rd by State
ALAD108-0418 (12/68)
- (68a) INTERSECTION
Rt Spk & W rd by State
ALAD108-0418 (12/68)
- (69a) INTERSECTION
Rt Spk & W rd by State
ALAD108-0418 (12/68)
- (70a) INTERSECTION
Rt Spk & W rd by State
ALAD108-0418 (12/68)
- (71a) INTERSECTION
Rt Spk & W rd by State
ALAD108-0418 (12/68)
- (72a) INTERSECTION
Rt Spk & W rd by State
ALAD108-0418 (12/68)
- (73a) INTERSECTION
Rt Spk & W rd by State
ALAD108-0418 (12/68)
- (74a) INTERSECTION
Rt Spk & W rd by State
ALAD108-0418 (12/68)
- (75a) INTERSECTION
Rt Spk & W rd by State
ALAD108-0418 (12/68)
- (76a) INTERSECTION
Rt Spk & W rd by State
ALAD108-0418 (12/68)
- (77a) INTERSECTION
Rt Spk & W rd by State
ALAD108-0418 (12/68)
- (78a) INTERSECTION
Rt Spk & W rd by State
ALAD108-0418 (12/68)
- (79a) INTERSECTION
Rt Spk & W rd by State
ALAD108-0418 (12/68)
- (80a) INTERSECTION
Rt Spk & W rd by State
ALAD108-0418 (12/68)
- (81a) INTERSECTION
Rt Spk & W rd by State
ALAD108-0418 (12/68)
- (82a) INTERSECTION
Rt Spk & W rd by State
ALAD108-0418 (12/68)
- (83a) INTERSECTION
Rt Spk & W rd by State
ALAD108-0418 (12/68)
- (84a) INTERSECTION
Rt Spk & W rd by State
ALAD108-0418 (12/68)
- (85a) INTERSECTION
Rt Spk & W rd by State
ALAD108-0418 (12/68)
- (86a) INTERSECTION
Rt Spk & W rd by State
ALAD108-0418 (12/68)
- (87a) INTERSECTION
Rt Spk & W rd by State
ALAD108-0418 (12/68)
- (88a) INTERSECTION
Rt Spk & W rd by State
ALAD108-0418 (12/68)
- (89a) INTERSECTION
Rt Spk & W rd by State
ALAD108-0418 (12/68)
- (90a) INTERSECTION
Rt Spk & W rd by State
ALAD108-0418 (12/68)
- (91a) INTERSECTION
Rt Spk & W rd by State
ALAD108-0418 (12/68)
- (92a) INTERSECTION
Rt Spk & W rd by State
ALAD108-0418 (12/68)
- (93a) INTERSECTION
Rt Spk & W rd by State
ALAD108-0418 (12/68)
- (94a) INTERSECTION
Rt Spk & W rd by State
ALAD108-0418 (12/68)
- (95a) INTERSECTION
Rt Spk & W rd by State
ALAD108-0418 (12/68)
- (96a) INTERSECTION
Rt Spk & W rd by State
ALAD108-0418 (12/68)
- (97a) INTERSECTION
Rt Spk & W rd by State
ALAD108-0418 (12/68)
- (98a) INTERSECTION
Rt Spk & W rd by State
ALAD108-0418 (12/68)
- (99a) INTERSECTION
Rt Spk & W rd by State
ALAD108-0418 (12/68)
- (100a) INTERSECTION
Rt Spk & W rd by State
ALAD108-0418 (12/68)

- (14) POINT ON TANGENT
Spk & W rd by State
ALAD108-0418 (12/68)
- (24) POINT ON TANGENT
Spk & W rd by State
ALAD108-0418 (12/68)
- (34) SECTION CORNER
No search made for 25M
S & W rd by State
ALAD108-0418 (12/68)
- (44) COR. POINT ON TRAVEL LINE
2" IP on pt and 20"
10000.00 Spur Rd by State
ALAD108-0418 (12/68)
- (54) CONTROL PT. ON TRANSIT LN.
7" BAR & CAP IN P.C.C. per
Title notes A332-001-55
Rd by State
A332-001-55 (4/50)
- (64) CONTROL PT. ON TRANSIT LN.
Brazos Cap
Rd by State
A332-001-55 (4/50)

- (17) INTERSECTION OF
R & Channel
Spk & W rd by State
ALAD108-0418 (12/68)
- (27) POINT ON R R TRACKS
2" IP on pt and 20"
10000.00 Spur Rd by State
ALAD108-0418 (12/68)
- (37) INTERSECTION OF TRAV.
LN & RR TRACKS
2" IP on end of spur
Rd by State
ALAD108-0418 (12/68)
- (47) CONTROL PT. ON TRAVEL LINE
2" X 2" Tack
set by State
ALAD108-0418 (12/68)
- (57) CONTROL PT. ON TRANSIT LN.
7" BAR & CAP IN P.C.C. per
Title notes A332-001-55
Rd by State
A332-001-55 (4/50)
- (67) CONTROL PT. ON TRANSIT LN.
Brazos Cap
Rd by State
A332-001-55 (4/50)



F.M. 21189
A1 OF A2

SEE MF 4099-2

DISTRICT COUNTY ROUTE POST MILES TOTAL PROJECT
 07 LA 10/605 R 35.9 - 36.8

STATE OF CALIFORNIA
 TRANSPORTATION AGENCY
 DEPARTMENT OF PUBLIC WORKS
 DIVISION OF HIGHWAYS
MONUMENTATION MAP
 NO. MF-4064-I
 George W. Hoffert
 Deputy District Engineer

JULY 16, 1970
 CE 6961 Date

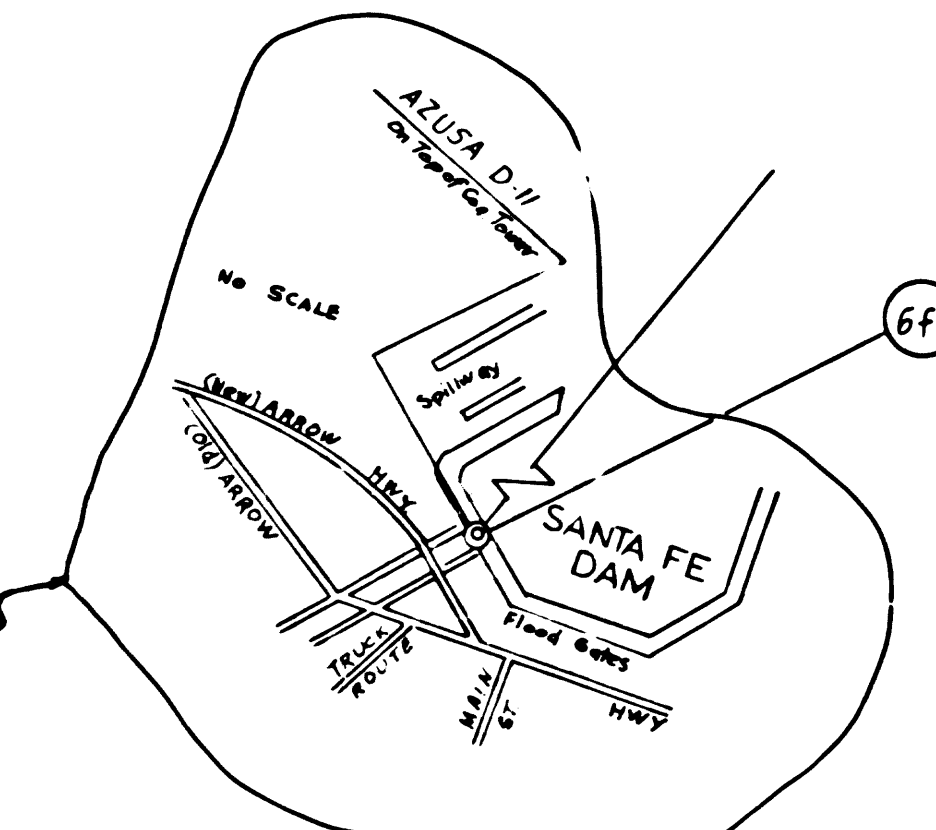
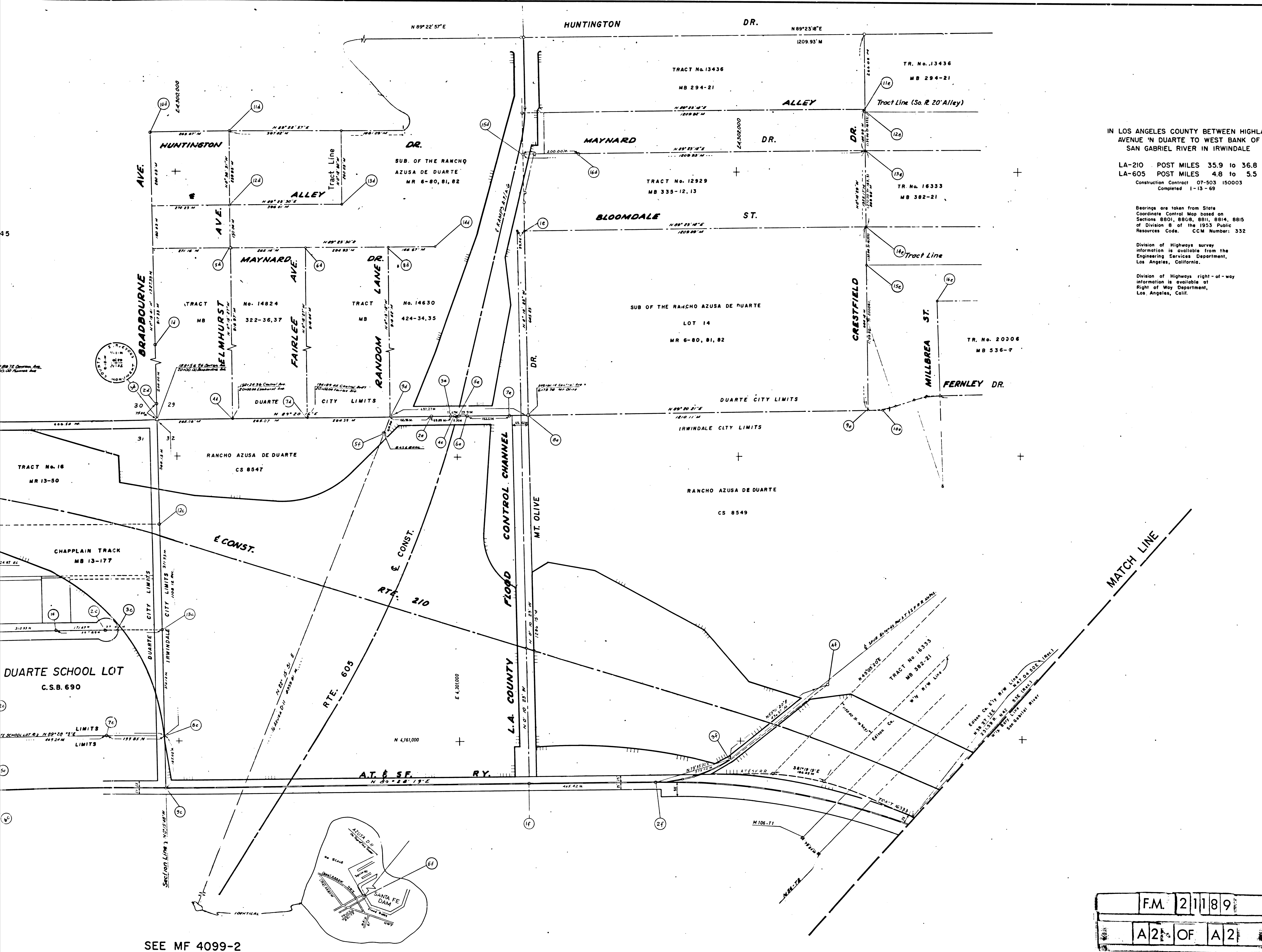
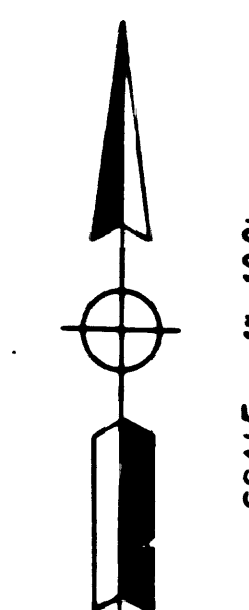
IN LOS ANGELES COUNTY BETWEEN HIGHLAND AVENUE 'N DUARTE TO WEST BANK OF SAN GABRIEL RIVER IN IRWINDALE

LA-210 POST MILES 35.9 to 36.8
 LA-605 POST MILES 4.8 to 5.5
 Construction Contract 07-503 150003
 Completed 1-13-69

Bearings are taken from State Coordinate Control Map based on Sections 8801, 8808, 8811, 8814, 8815 of Division 8 of the 1953 Public Resources Code. CCM Number: 332

Division of Highways survey information is available from the Engineering Services Department, Los Angeles, California.

Division of Highways right-of-way information is available at Right of Way Department, Los Angeles, Calif.



SEE MF 4065-1

SEE MF 4099-2

F.M. 21189
 A2 OF A2

Chief of Party	Date
V. ARCHAMBAULT	
Sr. Designer	Drawn by
G. SULAITIS	12/69
Mod. Supervisor	Compiled by
P. CHRETIEN	V. ADAMS
Project Engineer	
W. J. STEELE	12/69
District Survey Engineer	
W. C. SORLIE	12/69
Approval recommended by	
Assistant District Engineer	
R. McKEAN	12/69