

HERMOSA BEACH

CENTERLINE SURVEY

MADE BY S.E.R.A. AND W.P.A. WORKERS

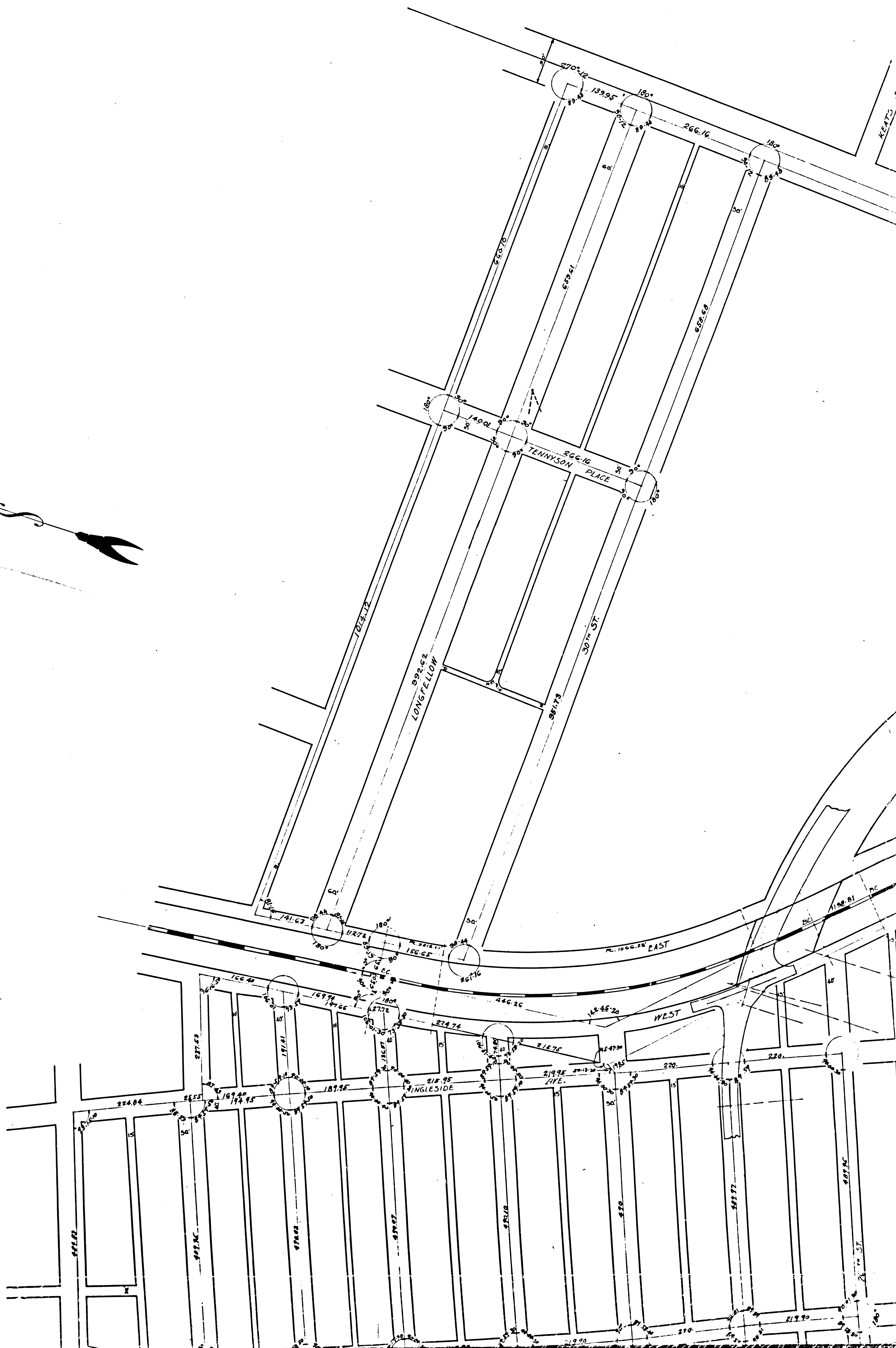
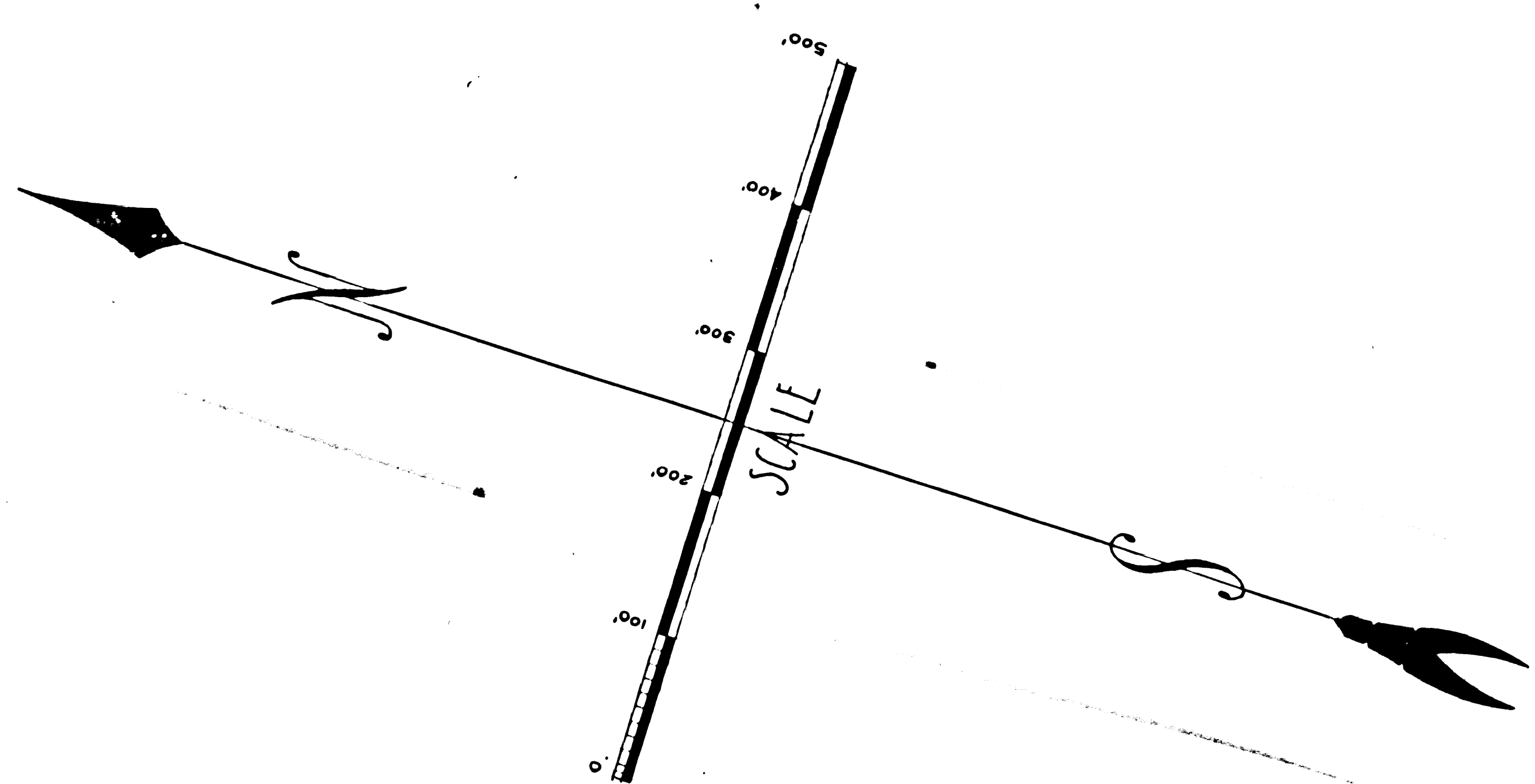
AUGUST 1934 TO AUGUST 1938

UNDER DIRECTION OF
CHAS. F. SAUNDERS

CITY ENGINEER

ALL ANGLES AND CENTER LINE DISTANCES HAVE BEEN CHECKED BY TRAVERSE
CALCULATIONS AND ADJUSTED TO MAXIMUM ERROR OF ONE MINUTE IN ANGLE
AND ONE HUNDRETH OF A FOOT PER ONE HUNDRED FEET IN DISTANCE

SCALE ONE INCH = ONE HUNDRED FEET

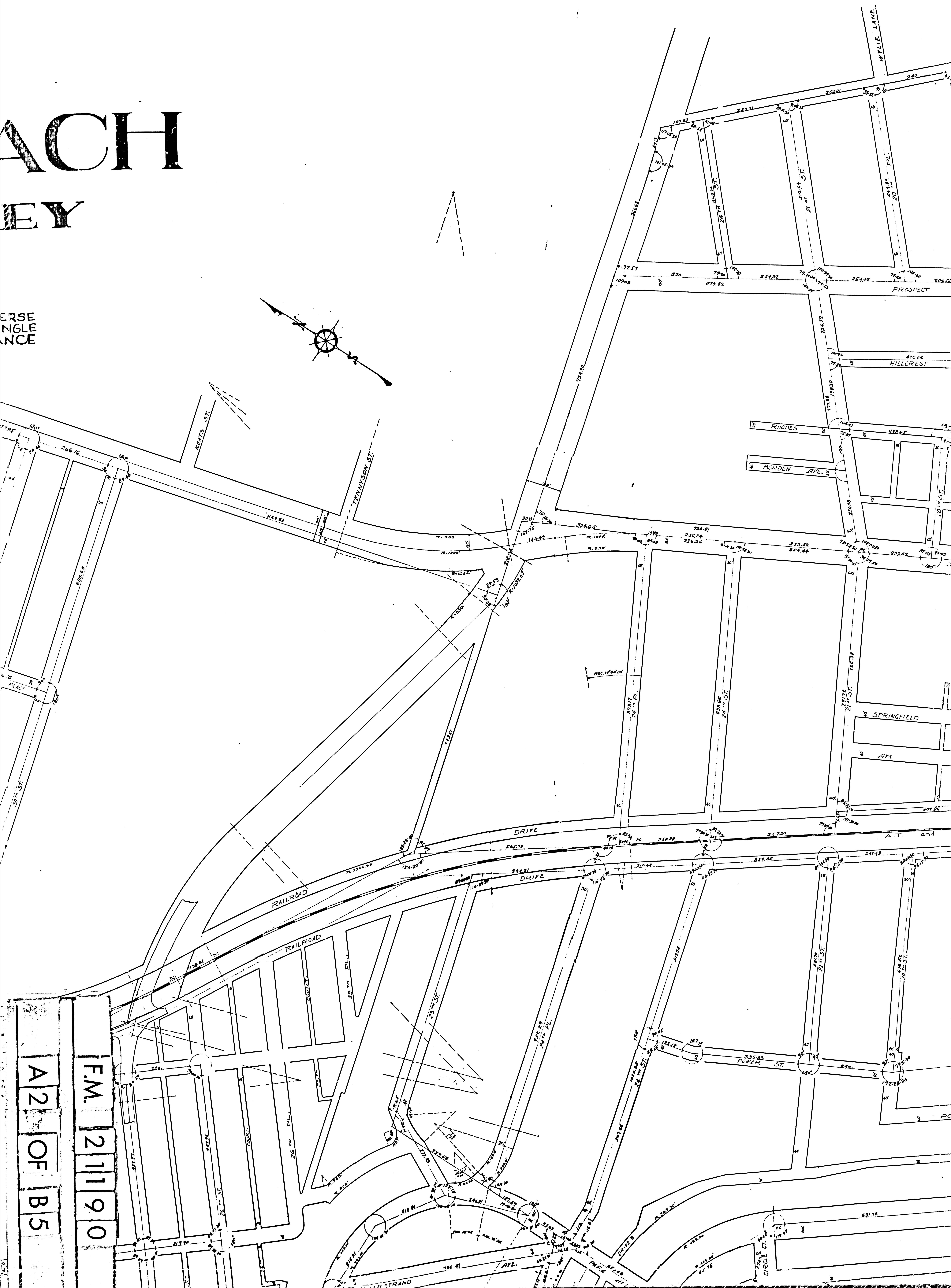


A 1 OF B 5

F.M. 2 11 9 0

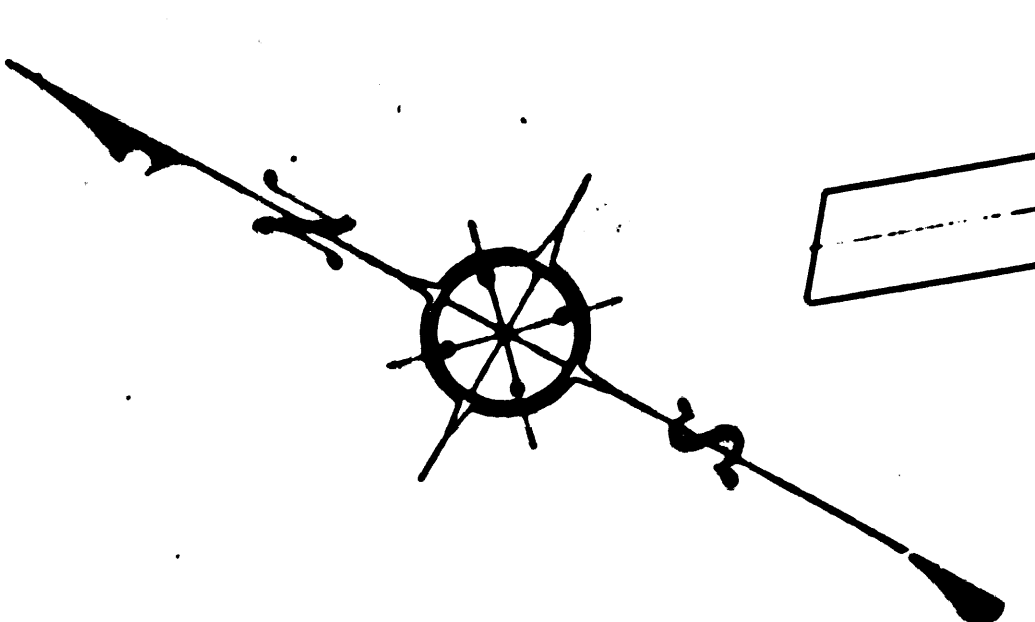
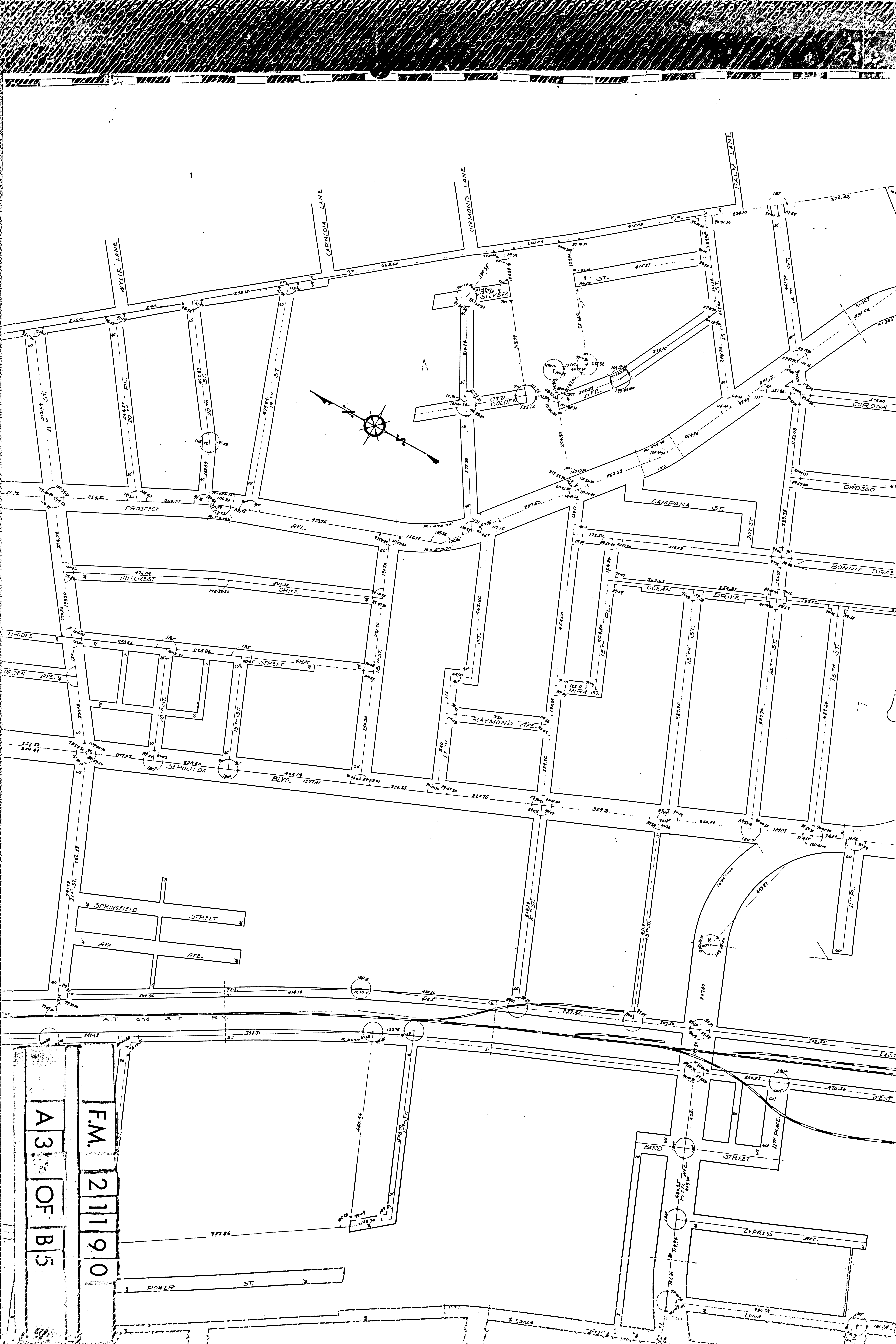
ACH EY

ERSE
NGLE
NCE

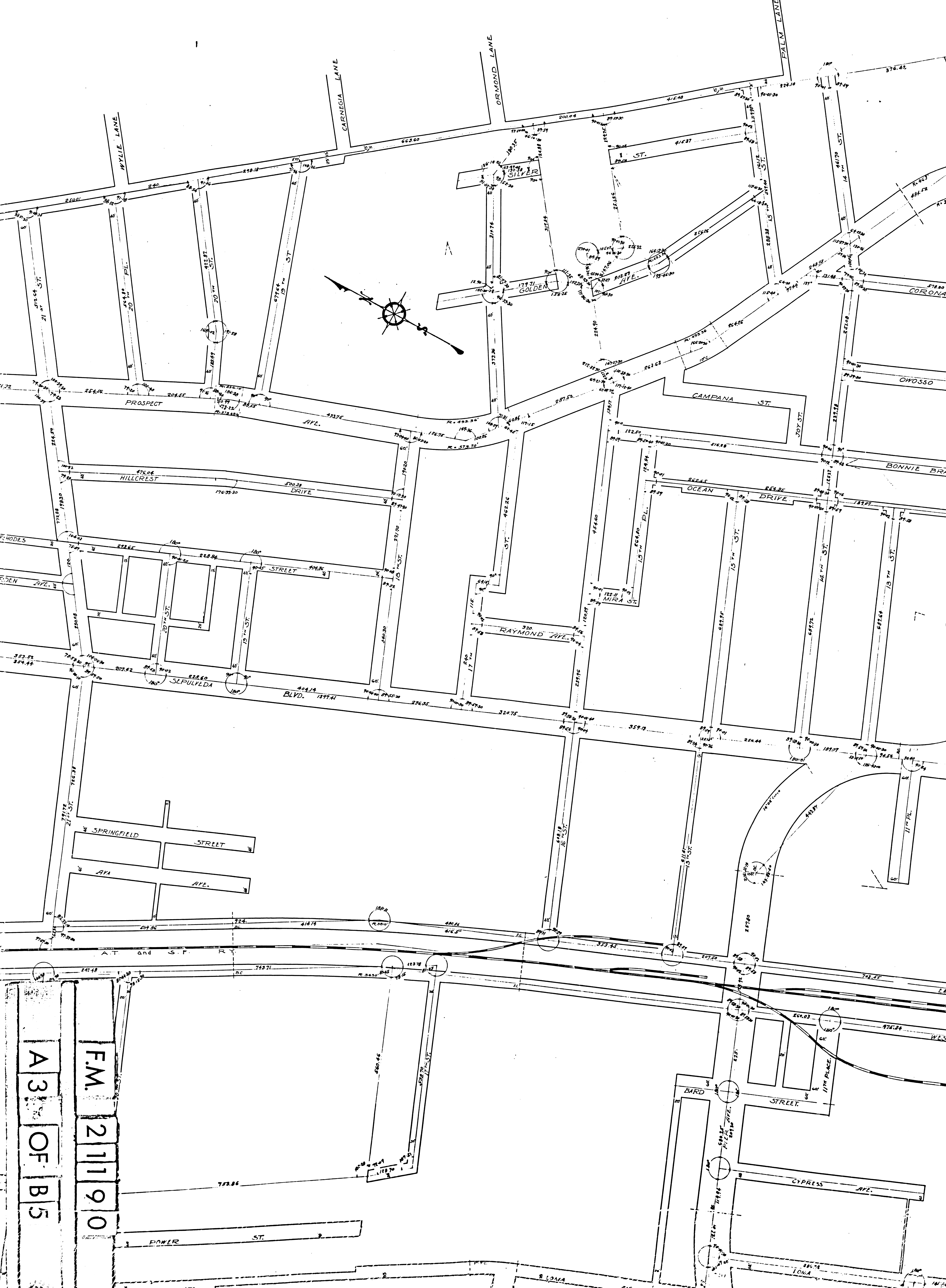


A 2
OF
B 5

F.M. 211190

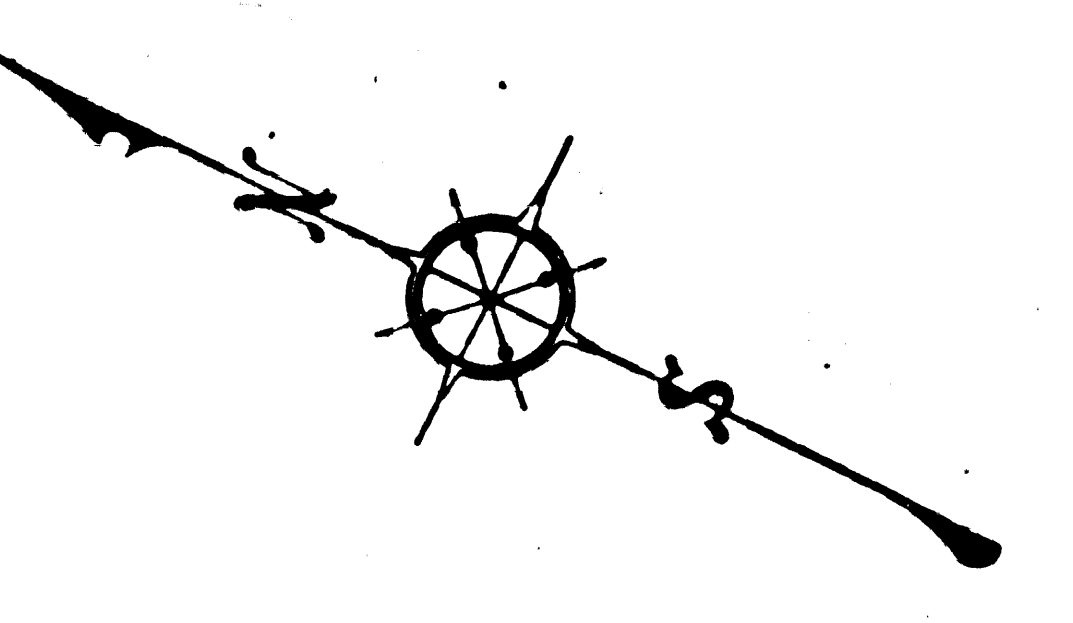
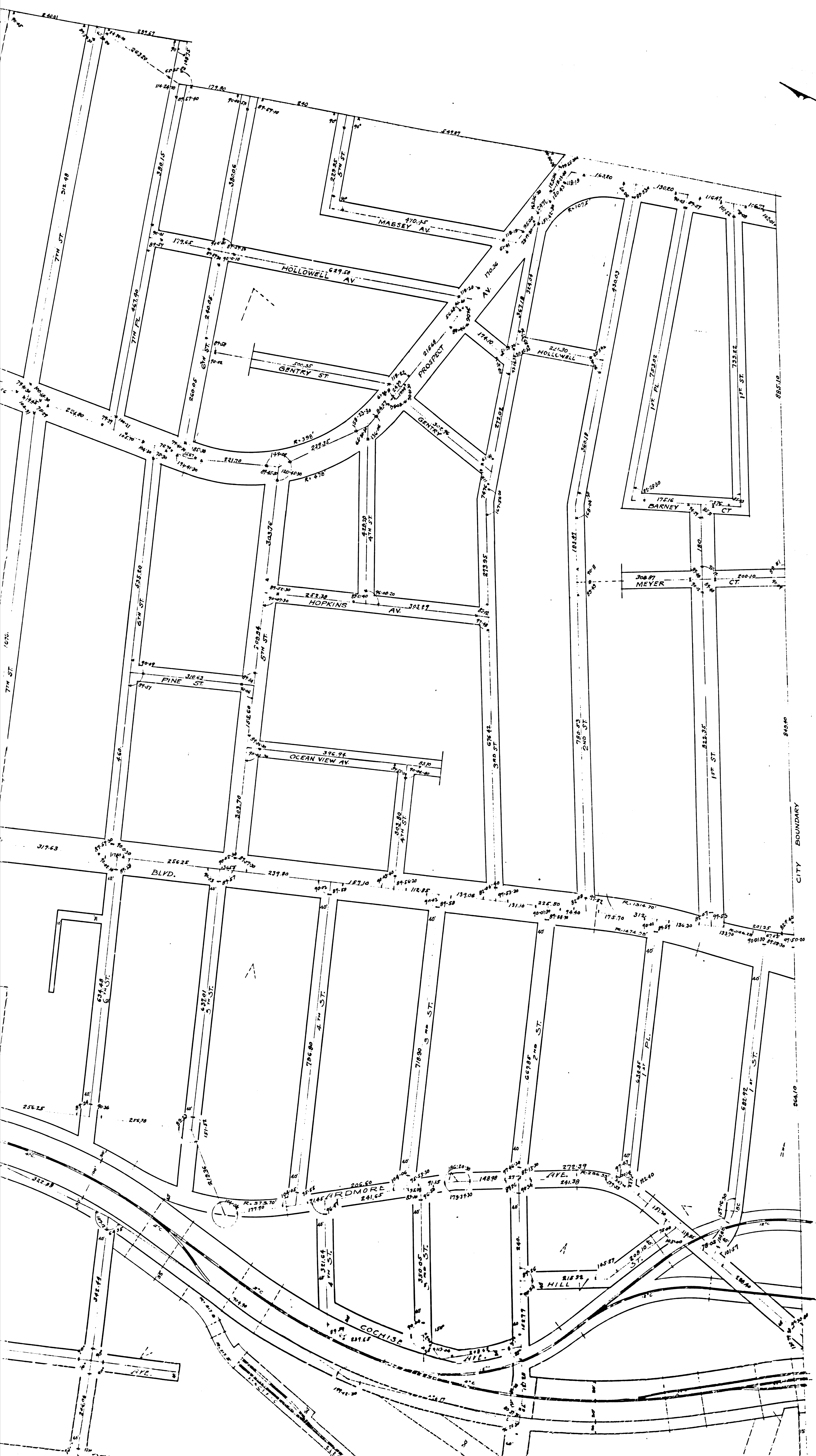


A 3 OF B 5
F.M. 21190





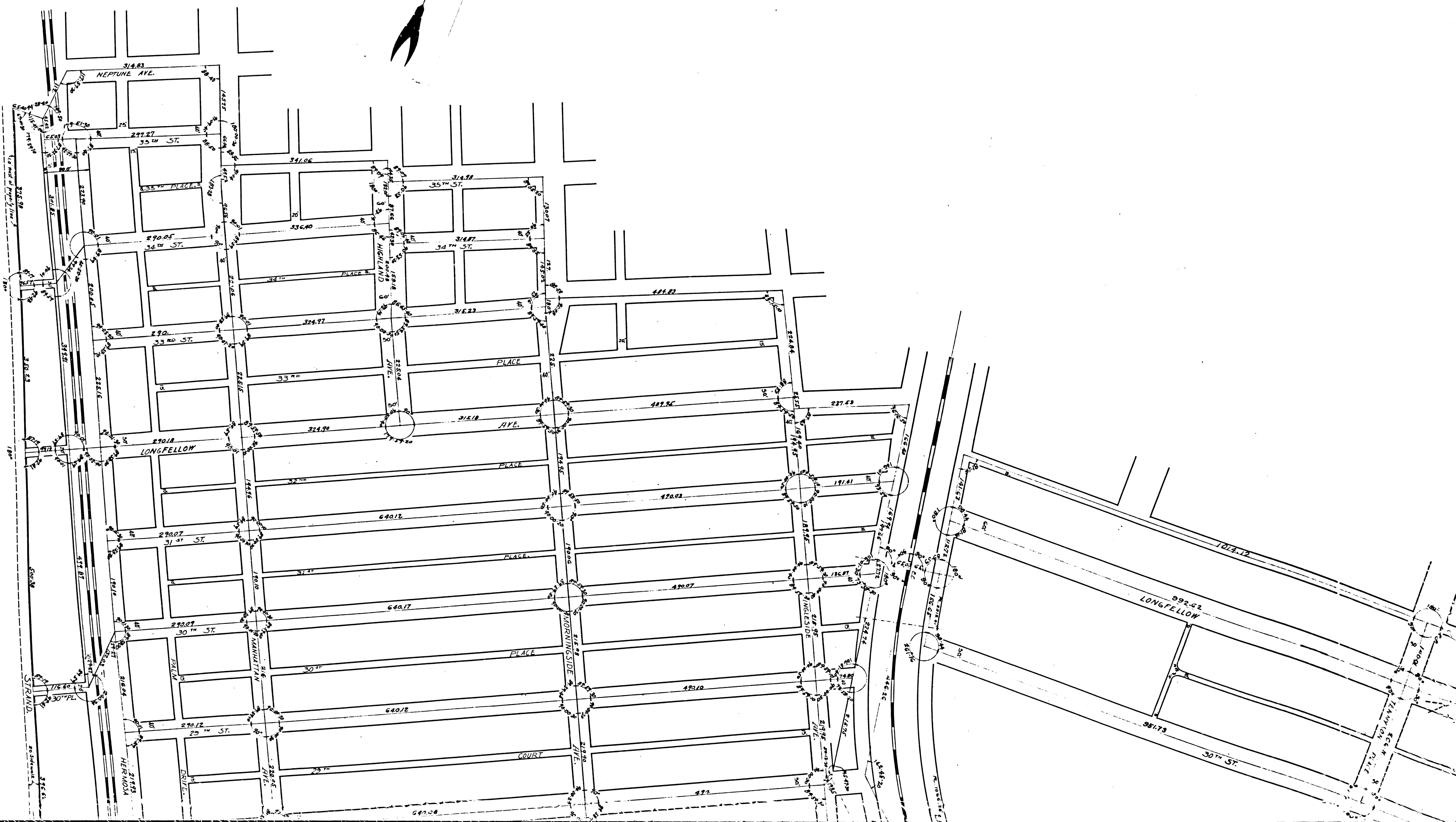
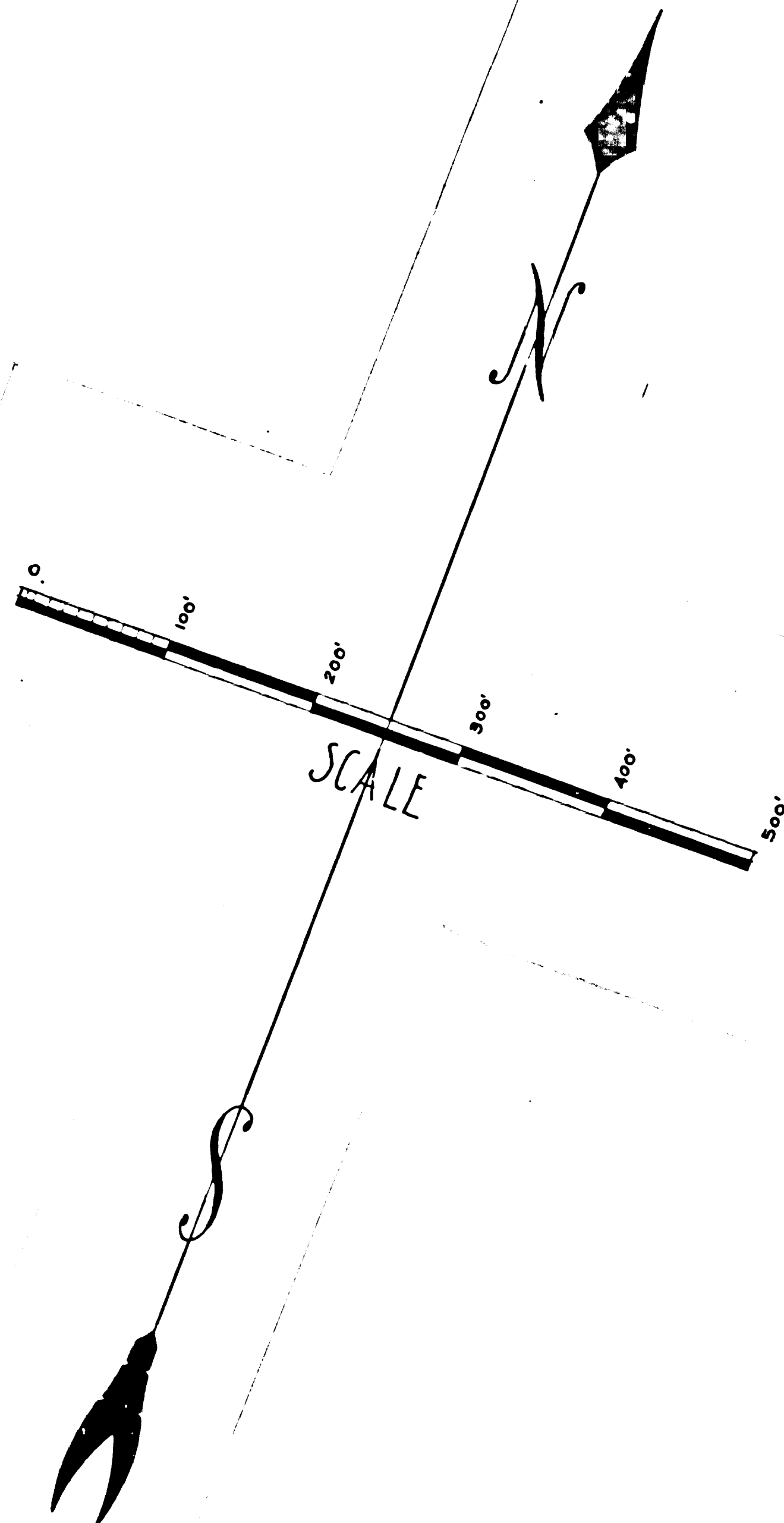
A 4 OF B 5
F.M. 211190



F.M.	211190
A 5	OF B 5

F.M. 21190

B1 OF B5

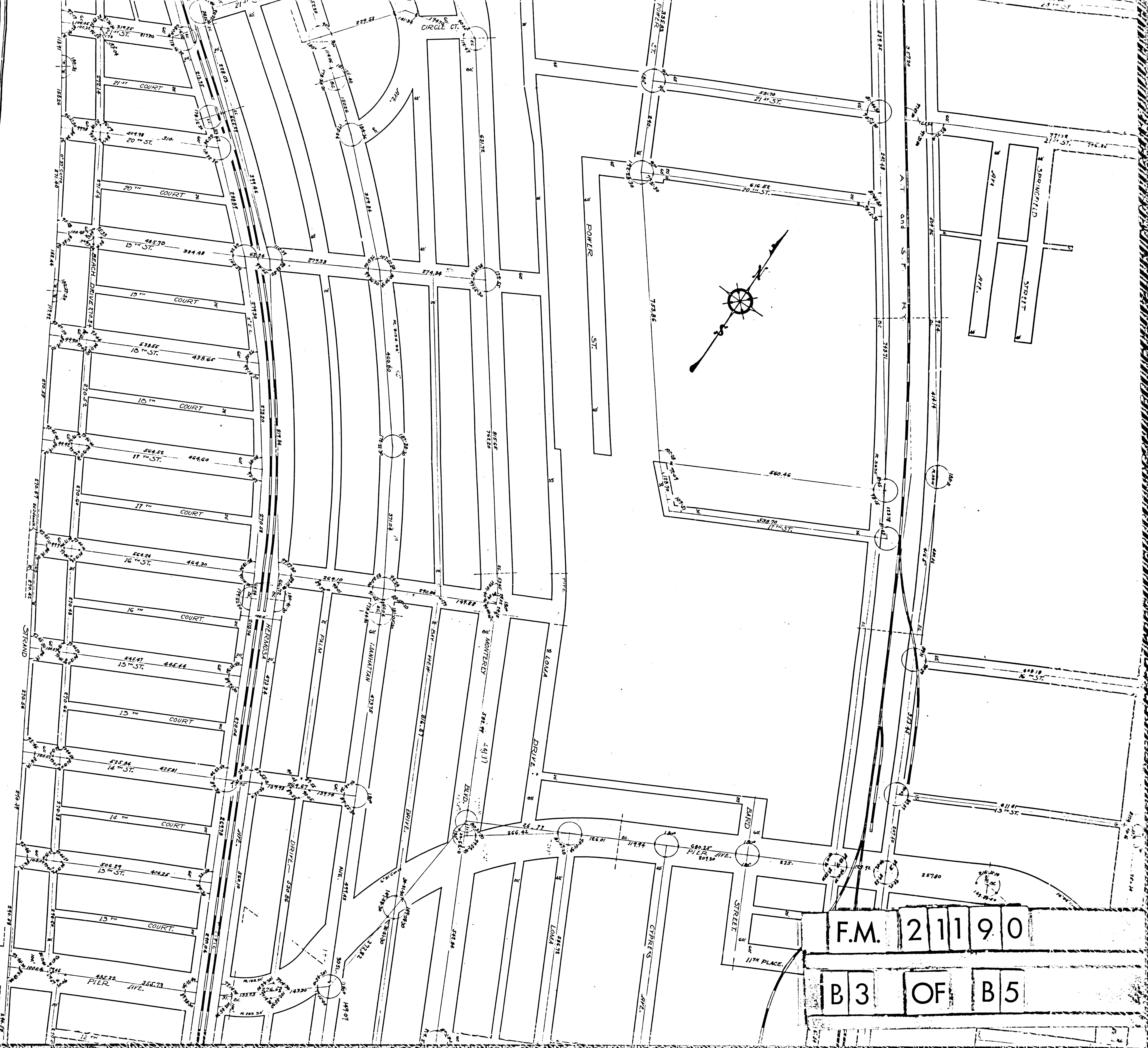


PACIFIC



F.M.	2	1	1	9	0
B	2	OF	B	5	

1 F I C



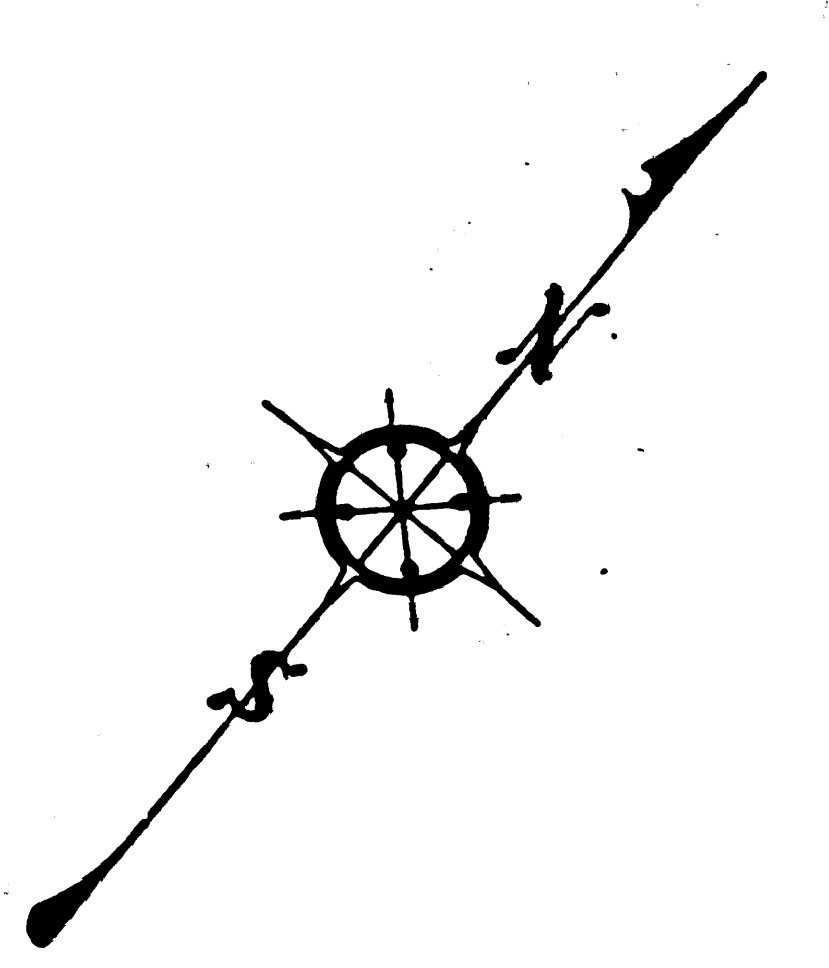
F.M. 21190

B3 OF B5

O C C E A N



F.M.	2	1	1	9	0
B	4	OF	B	5	



F.M.	2	1	1	9	0
B	5	OF	B	5	