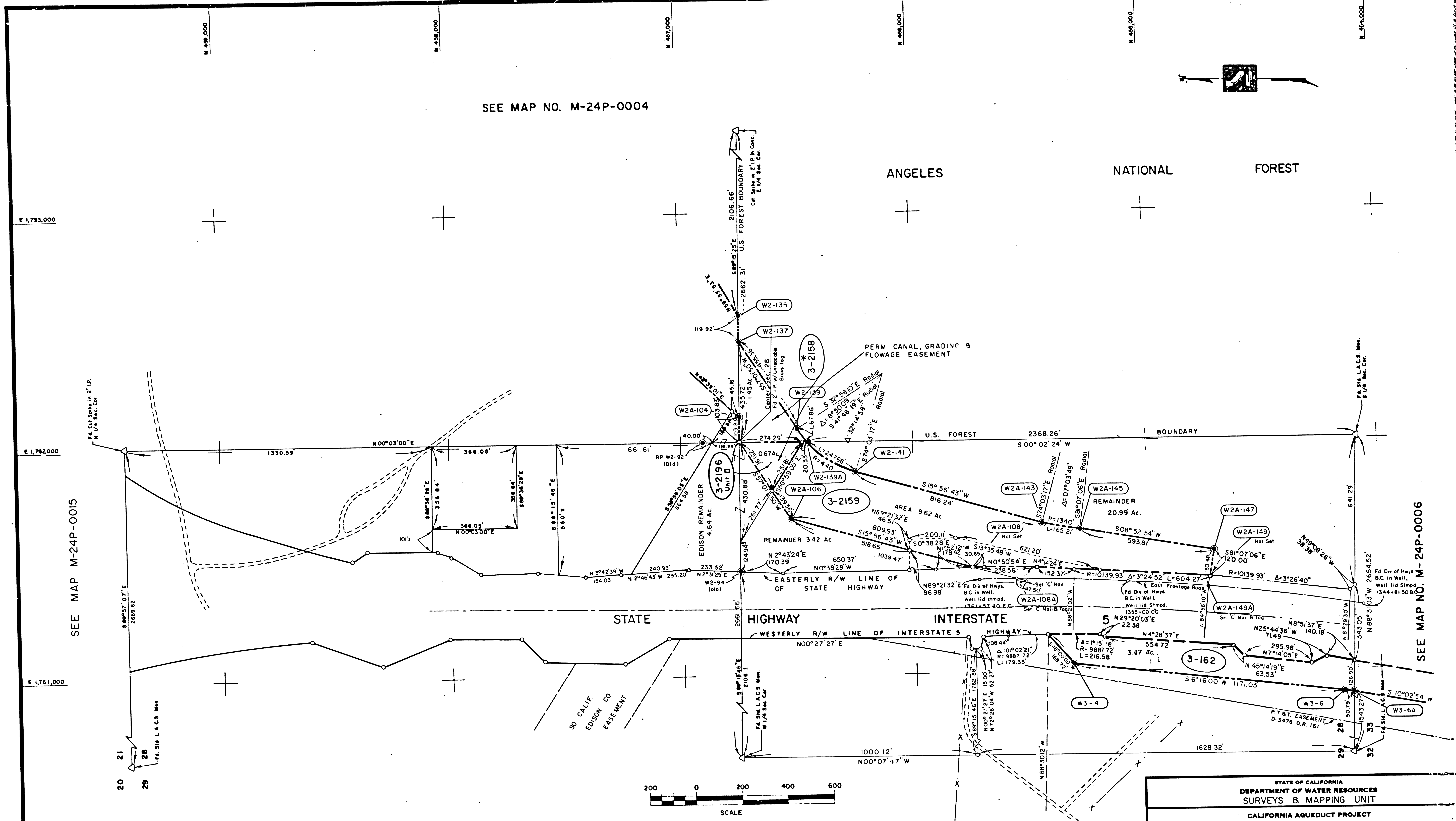


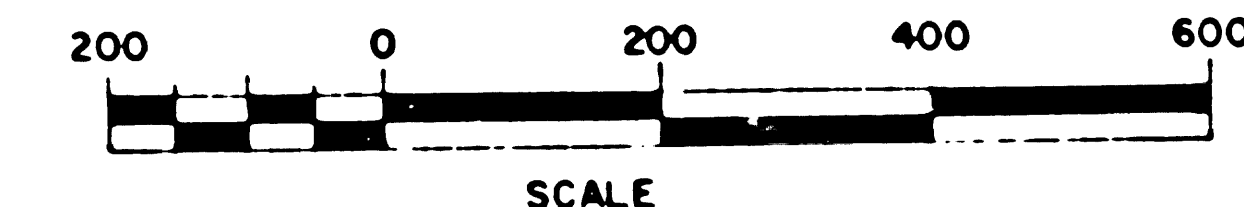
10-27  
 2-12-69  
 6-13-69

SEE MAP NO. M-24P-0004



SEE MAP M-24P-0015

SEE MAP NO. M-24P-0006



D.W.R. MONUMENT

⊙ = 3/4" I.P. & Brass Plug in Conc.

1 Bearings and Distances shown are based on California Coordinate System, Zone 5.  
 2\* To be acquired by FPC license

Ref. R800100 Pgs. 353-368, 467-484, 848

PARCEL NUMBER	TITLE REPORT NUMBER	NAME OF OWNER	GROSS AREA	NET AREA	PERM. AREA	TEMP. EASEMENT	RIGHT OF WAY	LEFT REMAINDER
3-162	6400081	GORMAN INVESTMENTS	3.47Ac	3.47Ac				70.61Ac
3-2158 *	6400050	UNITED STATES OF AMERICA	1.45Ac	1.45Ac				
3-2159	6400082	SAUNDERS, R. C.	9.62Ac	8.45Ac			3.42Ac	20.99Ac
3-2196 UNIT II	6497952	SOUTHERN CALIFORNIA EDISON			0.67Ac			4.64Ac

REV.	DATE	DESCRIPTION	SUB.	APP'D.
6	4-13-70	Revised Alignment		
5	1-27-70	Revised to Conform w. h. Alignment of Lined Channel		
4	9-16-69	Revised Pcis 3-2159 & 3-2196 Unit II, Deleted		
3	4-24-69	Rev Gorman Creek Channel, Deleted Peace Valley Pipeline		
2	10-3-67	Added Canal Ease To Flowage Ease		
1	4-10-67	ADDED GORMAN CREEK CHANNEL IMPROVEMENT AREA CHANGED FEE ACQUISITION TO PERM. EASE. REVISED ENTIRE ACQUISITION AREA.		

STATE OF CALIFORNIA  
 DEPARTMENT OF WATER RESOURCES  
 SURVEYS & MAPPING UNIT

CALIFORNIA AQUEDUCT PROJECT  
 WEST BRANCH DIVISION  
 GORMAN CREEK CHANNEL IMPROVEMENT  
 MONUMENTS  
 W 1/2 SECTION 28, T8N, R18W - S.B.B.&M.

DRAWN: J.P. Worrall  
 MAY 1966

CHECKED: [Signature]

APPROVED: [Signature]  
 CHIEF DIVISION SURVEYS & MAPPING

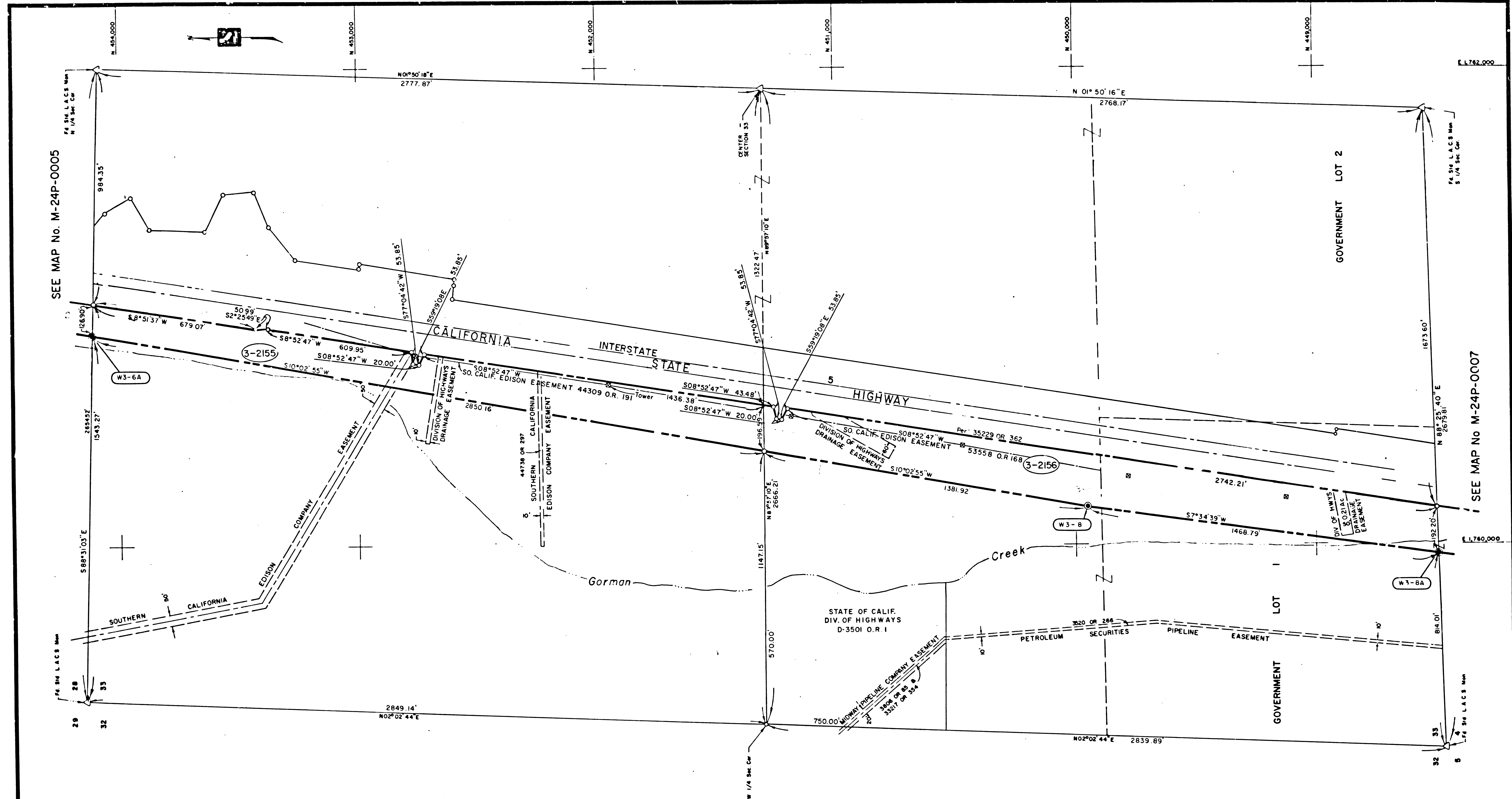
DRAWING NUMBER: M-24P-0005

JUL 13 1970 APRIL 13 1970 JAN 27 1970

F.M. 21193-1

F.M. 21193-

17-69  
17-70  
17-71



SEE MAP No. M-24P-0005

SEE MAP No M-24P-0007

PARCEL NUMBER	TITLE REPORT NUMBER	NAME OF OWNER	AREA	FEE	AREA EASEMENT	TEMP	RT.	LT.	FEE REMAINDER
3-2156	6400048	CHING, HUNG WO	13.49	Ac					52.26
3-2155	6400047	GORMAN INVESTMENTS	10.55	Ac					87.42



D.W.R. MONUMENT

⊙ = 3/4" I.P. & Brass Plug in Conc.

REF: R800100 847,48,50

NOTE:  
Bearings and Distances shown are based on California Coordinate System, Zone 5.

REV.	DATE	DESCRIPTION	SUB	APP'D
7	4-13-70	Revised Alignment		
6	1-27-70	Revised to Conform with Alignment of Lined Channel		
5	4-24-69	Revised Gorman Creek Channel, Deleted Peace Valley Pipeline		
4	1-3-67	Added Canal Easement to Flowage Easement		
3	8-3-67	Revised Perm Slope and Drain Easement Parcel 3-2152 Unit I		
2	3-14-67	Revised entire Acquisition area Change Fee Acquisition to Perm Easement Added revised Gorman Creek		
1	5-4-66	Deleted Gorman Creek Channel Improvement.		

STATE OF CALIFORNIA  
DEPARTMENT OF WATER RESOURCES  
SURVEYS & MAPPING UNIT

CALIFORNIA AQUEDUCT PROJECT  
WEST BRANCH DIVISION  
GORMAN CREEK CHANNEL IMPROVEMENT  
MONUMENTS  
SECTION 33, T8N, R18W - S.B.B. & M.

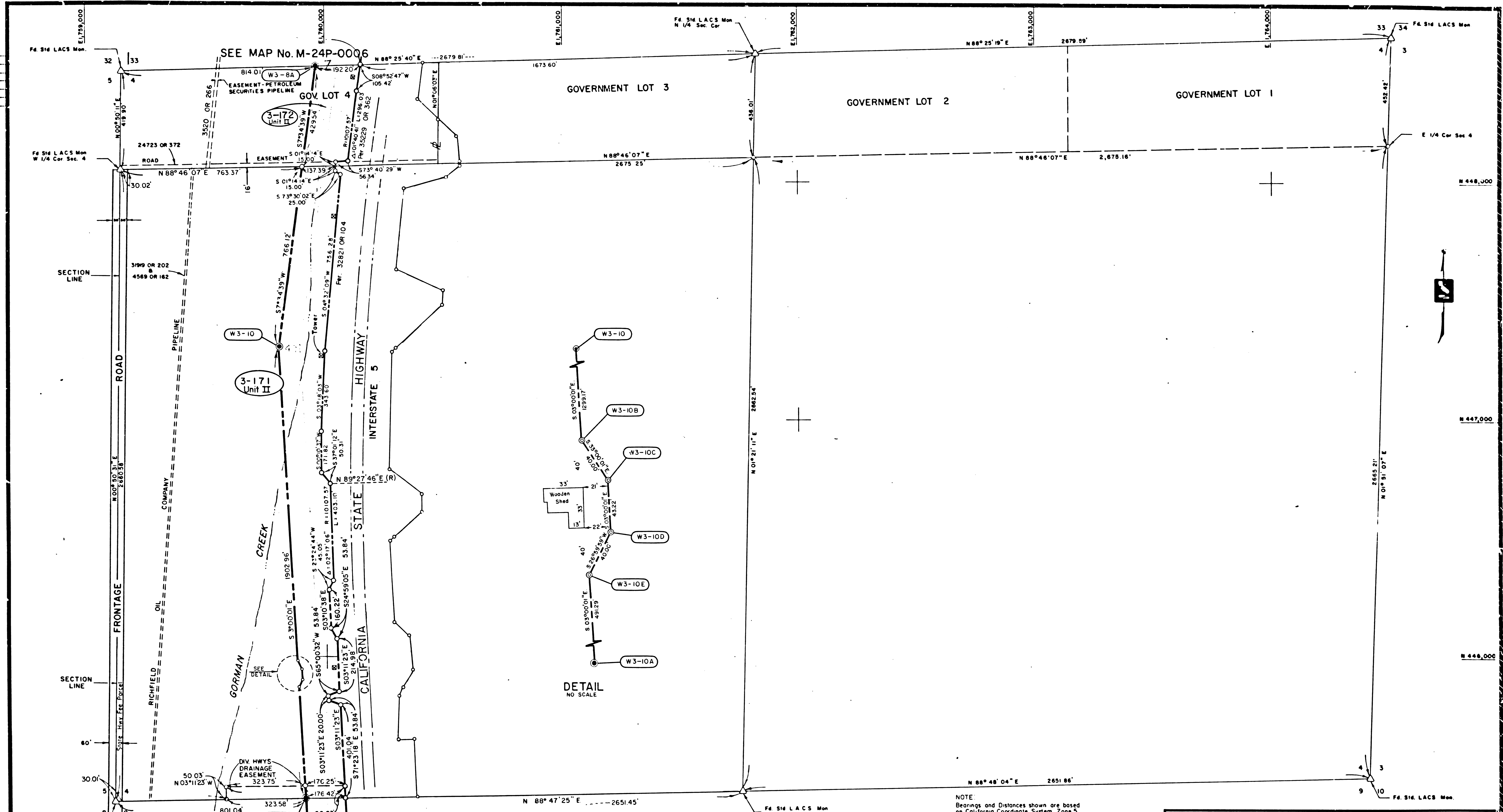
DRAWN J.P. Worrall APRIL 1966	SUBMITTED S. Williams J.P. Worrall APRIL 1966	APPROVED: DATE: 1/28/70
CHECKED T. Crutland 5/19/66	RECOMMENDED FOR ACQUISITION e.e. Donald CHIEF TECH. WEST BRANCH DESIGN SECT.	DRAWING NUMBER M-24P-0006

JAN. 27, 1970  
APRIL 13, 1970  
1/28/70

F.M. 21193-2

F.M. 21193-2

DATE	ENGR
1-23-70	
2-24-70	
3-10-70	
11-17-70	
1-23-71	



SEE MAP No. M-24P-0008

PARCEL NUMBER	TITLE REPORT NUMBER	NAME OF OWNER	GROSS AREA	NET AREA	PERM AREA	TEMP AREA	RIGHT REMAINDER
3-172 UNIT II	6400073	CHING, HUNG WO	1.81 Ac				7.64 Ac
3-171 UNIT II	6400072	ORWIN, J.J. et ux.	10.71 Ac				44.68 Ac

1" = 200'

DWR MONUMENT  
 ○ = 3/4" I.P. w/ Nail & Tag in Conc.  
 ● = 3/4" IP & Brass Tag in Conc

REF R800100 846A, 49, 50, 51

REV	DATE	DESCRIPTION	SUB	APP'D
7	4-13-70	Revised Alignment		
6	1-28-70	Revised to Conform with Alignment of Lined Channel		
5	4-24-69	Rev Gorman Creek Channel, Deleted Peace Valley Pipeline		
4	10-3-67	Added Canal Ease To Flowage Ease		
3	8-23-67	Rev Ease Area 3-171 Unit I to Include Mobil Oil Co. Ease Area		
2	2-3-67	Revised entire Acquisition Area Change Fee Acquisition To Term Easement Added Revised Gorman Creek Channel Improvement Area		
1	5-4-66	Deleted Gorman Creek Channel Improvement		

STATE OF CALIFORNIA  
 DEPARTMENT OF WATER RESOURCES  
 SURVEYS & MAPPING UNIT

CALIFORNIA AQUEDUCT PROJECT  
 WEST BRANCH DIVISION

GORMAN CREEK CHANNEL IMPROVEMENT  
 MONUMENTS  
 SECTION 4, T7N R18W - S.B.B. & M.

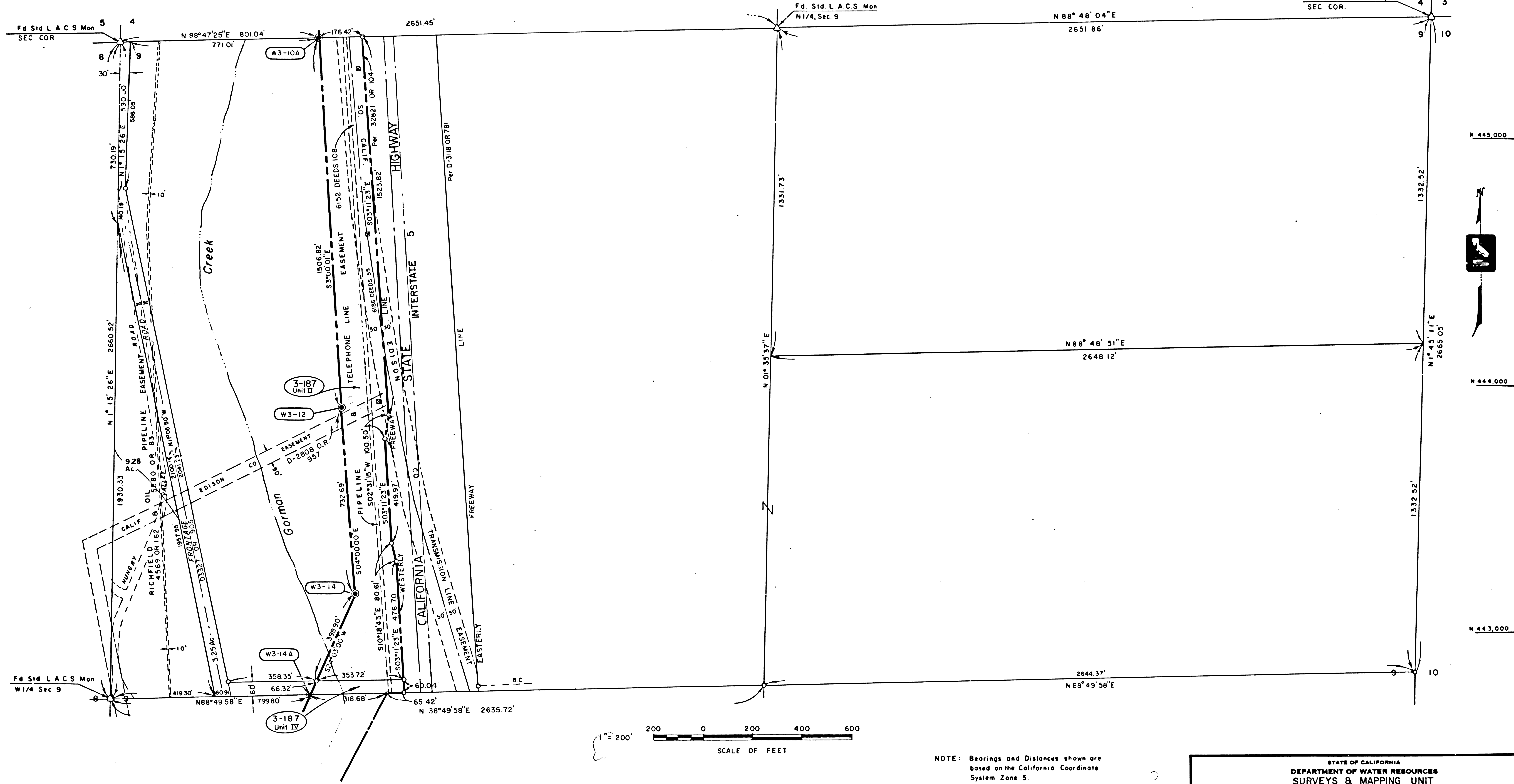
DRAWN: *W. L. Berg*  
 CHECKED: *W. L. Berg*  
 APPROVED: *W. L. Berg*  
 DATE: 1-23-71

DRAWING NUMBER: M-24P-0007

F.M. 21193-3

JAN-28-1970  
 APRIL 13, 1970  
 F.M. 1193-3

SEE MAP No. M-24P-0007



SEE MAP No. M-24P-0009

**D.W.R. MONUMENT**

⊙ = 3/4" I.P. & Brass Plug in Conc.

⊙ = 3/4" I.P. w/ Nail & Tag in Conc.

REF R800100 849,51,52

PARCEL NUMBER	TITLE REPORT NUMBER	NAME OF OWNER	GROSS AREA	NET AREA	PERM. AREA	TEMP. AREA	FEE REMAINDER
3-187 UNIT IV		STATE OF CALIFORNIA	0.51 Ac.				
3-187 UNIT II	6400070	ORWIN, G.P., et ux	11.20 Ac.				41.13 Ac.

NOTE: Bearings and Distances shown are based on the California Coordinate System Zone 5.

Interest on State Highway Right-of-Way will be joint use areas.

REV.	DATE	DESCRIPTION	BY	APP'D
8	4-13-70	Revised Alignment	J.P.W.	H.L.B.
7	3-20-70	Revised Acquisition Line	J.P.W.	H.L.B.
6	1-28-70	Revised to Conform with Alignment of Lined Channel	J.P.W.	H.L.B.
5	4-24-69	Revised Gorman Creek Channel; Deleted Peace Valley Pipeline	J.P.W.	H.L.B.
4	10-5-67	Added Canal Easement to Flowage Easement; Removed Pct 3-187 Unit II	J.P.W.	H.L.B.
3	8-2-67	Revised Easement Area Pct 3-187 Unit I.	J.P.W.	H.L.B.
2	2-3-67	Revised entire Acquisition area. Change Fee Acquisition to Perm Easement. Added revised Gorman Creek Channel Improvement area.	J.P.W.	H.L.B.
1	5-4-66	Deleted Gorman Creek Channel Improvement	J.P.W.	H.L.B.

STATE OF CALIFORNIA  
DEPARTMENT OF WATER RESOURCES  
SURVEYS & MAPPING UNIT

CALIFORNIA AQUEDUCT PROJECT  
WEST BRANCH DIVISION

**GORMAN CREEK CHANNEL IMPROVEMENT MONUMENTS**  
N 1/2 SEC. 9, T 7 N, R 18 W, S.B. 8 M

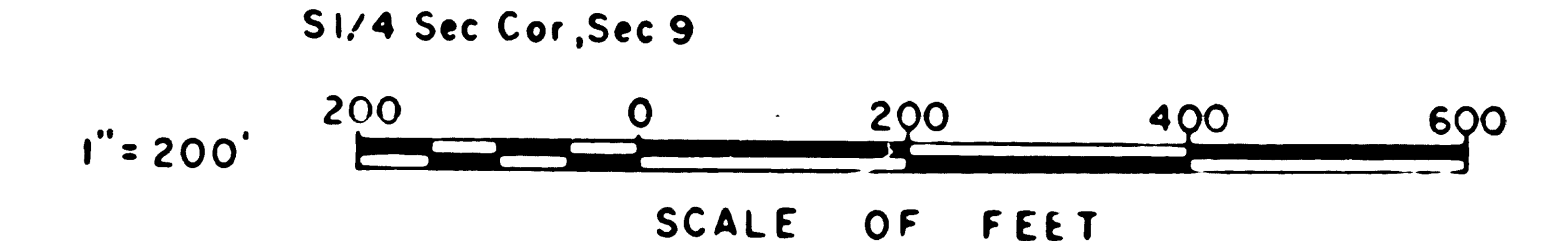
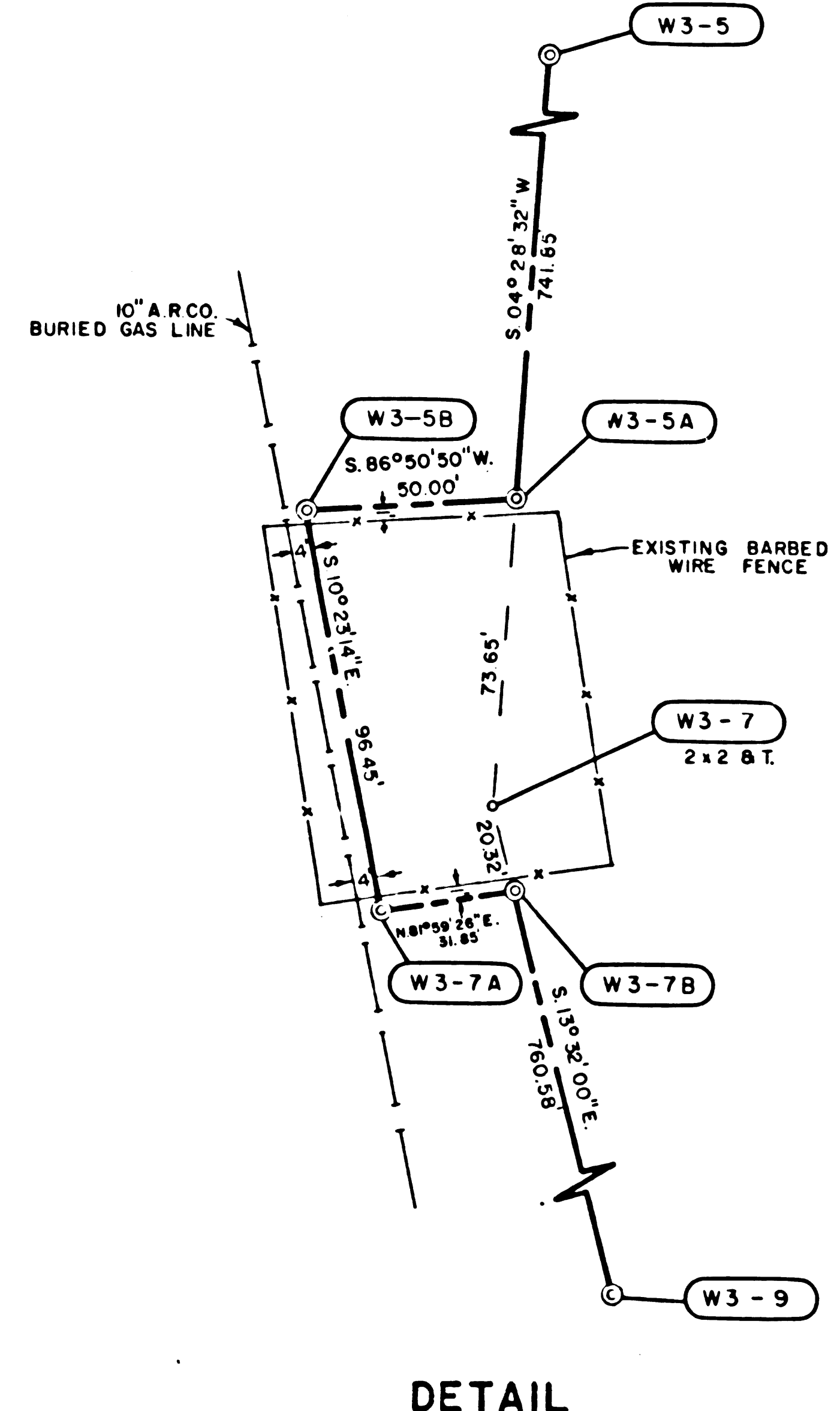
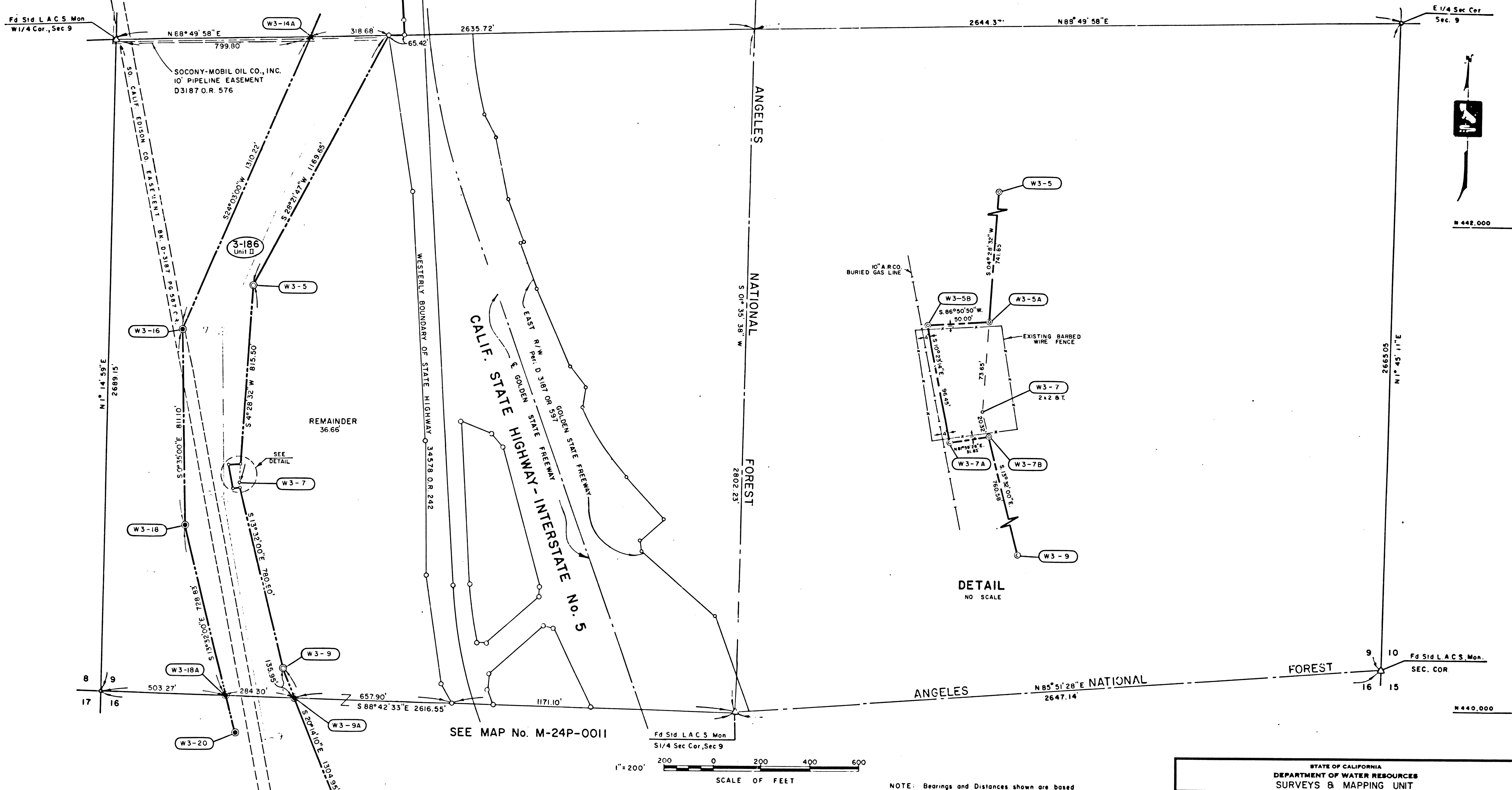
DRAWN J.P. Worrell February 1967	CHECKED H.L. BERG 2-3-67	APPROVED: <i>[Signature]</i> CHIEF SURVEYOR	DATE: <i>[Signature]</i> MARCH 20 1970
RECOMMENDED FOR ACQUISITION <i>[Signature]</i>		DRAWING NUMBER <b>M-24P-0008</b>	

JUL 13 1970 APRIL 13 1970 JAN 20 1970  
7/28/70 MARCH 20 1970

F.M. 211193-4

F.M.21193-4

SEE MAP No. M-24 P-0008



NOTE: Bearings and Distances shown are based on the California Coordinate System, Zone 5.  
Interest on U. S. Forest Lands to be acquired by F.P.C. license

**D.W.R. MONUMENT**

- ⊙ = 3/4" I.P. w/ Nail & Tag in Conc.
  - ⊙ = 3/4" I.P. & Brass Plug in Conc.
- REF R 800100 846D,E, 52,53,55

PARCEL NUMBER	TITLE REPORT NUMBER	NAME OF OWNER	GROSS AREA	NET AREA	PERM AREA	TEMP AREA	RT	LT
3-186 Unit II	6400069	CHING, HUNG WO	16.39Ac.				27.11Ac.	36.66 Ac.

REV	DATE	DESCRIPTION	BY	APP
7	4-13-70	Revised Alignment		
6	3-20-70	Revised Acquisition Line		
5	1-28-70	Revised to Conform with Alignment of Lined Channel		
4	11-17-69	Rev. Acquisition Line		
3	4-24-69	Rev. Gorman Creek Channel, Deleted Peace Valley Pipeline		
2	10-3-67	Added Canal Easement to Flowage Easement		
1	2-3-67	Revised entire Acquisition Area Change Fee Acquisition to Perm. Easement. Added Revised Gorman Creek Channel Improvement area		

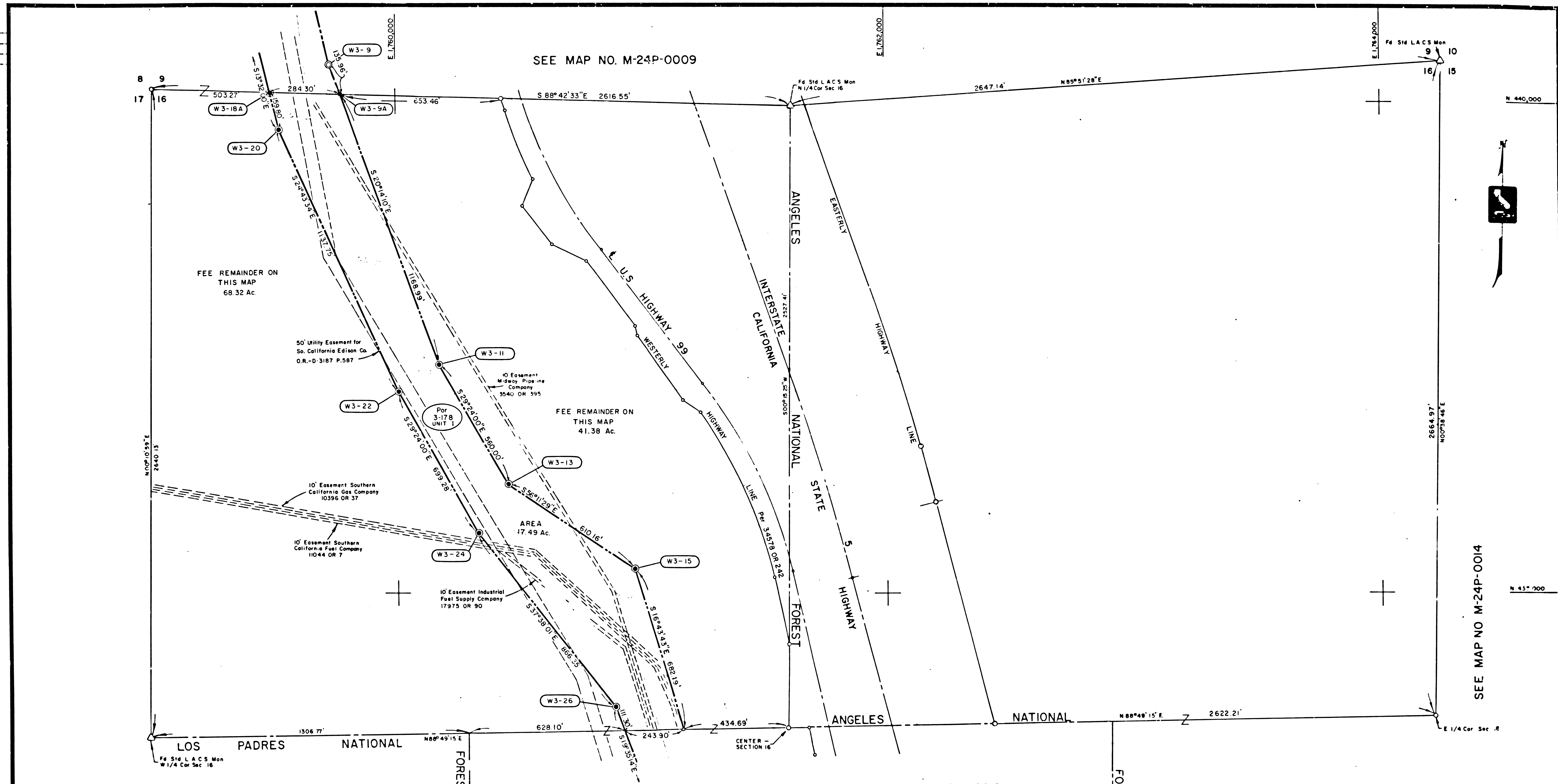
STATE OF CALIFORNIA  
DEPARTMENT OF WATER RESOURCES  
SURVEYS & MAPPING UNIT

CALIFORNIA AQUEDUCT PROJECT  
WEST BRANCH DIVISION  
GORMAN CREEK CHANNEL IMPROVEMENT MONUMENTS  
S 1/2 SEC 9, T 7 N, R 18 W, S. B. & M

DRAWN <i>Richard Brown</i> 4-27-66	SUBMITTED <i>H. L. Berg</i> 4-27-66	APPROVED: DATE: <i>H. L. Berg</i> 4-27-66
CHECKED H. L. Berg 2-6-67		DRAWING NUMBER M-24P-0009

APRIL 13, 1970 JAN 20 1970  
7/28/70 MARCH 20, 1970  
FM 21193-5

F.M. 21193-5



SEE MAP NO. M-24P-0009

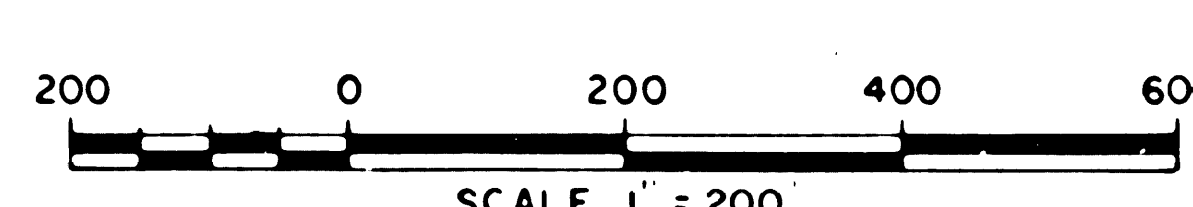
SEE MAP NO. M-24P-0012

NOTE: TOTAL AREA PARCEL 3-178 UNIT I = 32.84 ACRES  
 TOTAL AREA REMAINDER RIGHT = 96.01 ACRES  
 TOTAL AREA REMAINDER LEFT = 69.47 ACRES

\* AREAS ON THIS MAP

PARCEL NUMBER	TITLE REPORT NUMBER	NAME OF OWNER	GROSS AREA	NET AREA	PERMANENT EASEMENT	TEMPORARY EASEMENT	R.GHT	LEFT
PTN 3-178 UNIT I		CHING, HUNG WO	17.49 Ac				68.32 Ac	41.38 Ac

D.W.R. MONUMENT  
 ● = 3/4" I.P. & Brass Plug in Conc.  
 ○ = 3/4" I.P. w/ Nail & Tag in Conc.  
 REF R800100 846D,53,55,56



NOTE:  
 Bearings and Distances shown are based on California Coordinate System, Zone 5.

REV	DATE	DESCRIPTION	BY	APP'D
8	4-13-70	Revised Alignment	J.P.W.	
7	3-20-70	Revised Acquisition Line	J.P.W.	
6	1-12-70	Revised to Conform with Alignment of Lined Channel	J.P.W.	
5	11-17-69	Revised Acquisition Line	J.P.W.	
4	4-24-69	Revised Gorman Creek Channel, Deleted Peace Valley Pipeline	J.P.W.	
3	5-1-68	Vesting Change Pcl 3-3164	J.P.W.	
2	10-3-67	Addec Canal Ease to Flowage Ease	J.P.W.	
1	1-23-67	Original Appraisal Map signed by Chief, Design & Construction Branch on May 16, 1966.	J.P.W.	

STATE OF CALIFORNIA  
 THE RESOURCES AGENCY  
 DEPARTMENT OF WATER RESOURCES  
 SURVEYS & MAPPING UNIT

CALIFORNIA AQUEDUCT  
 WEST BRANCH DIVISION

GORMAN CREEK CHANNEL IMPROVEMENT  
 MONUMENTS  
 N 1/2 SECTION 16, T7N, R18W-SBB&M

DRAWN J.P. Worrell January 1967	SUBMITTED <i>[Signature]</i>	APPROVED: DATE: <i>[Signature]</i> 2/24/67
CHECKED M.L. Berg 2-6-67	RECOMMENDED FOR ACQUISITION <i>[Signature]</i>	DRAWING NUMBER M-24P-0011

APRIL 13, 1970 JAN 28, 1970  
 7/28/70 MARCH 20, 1970

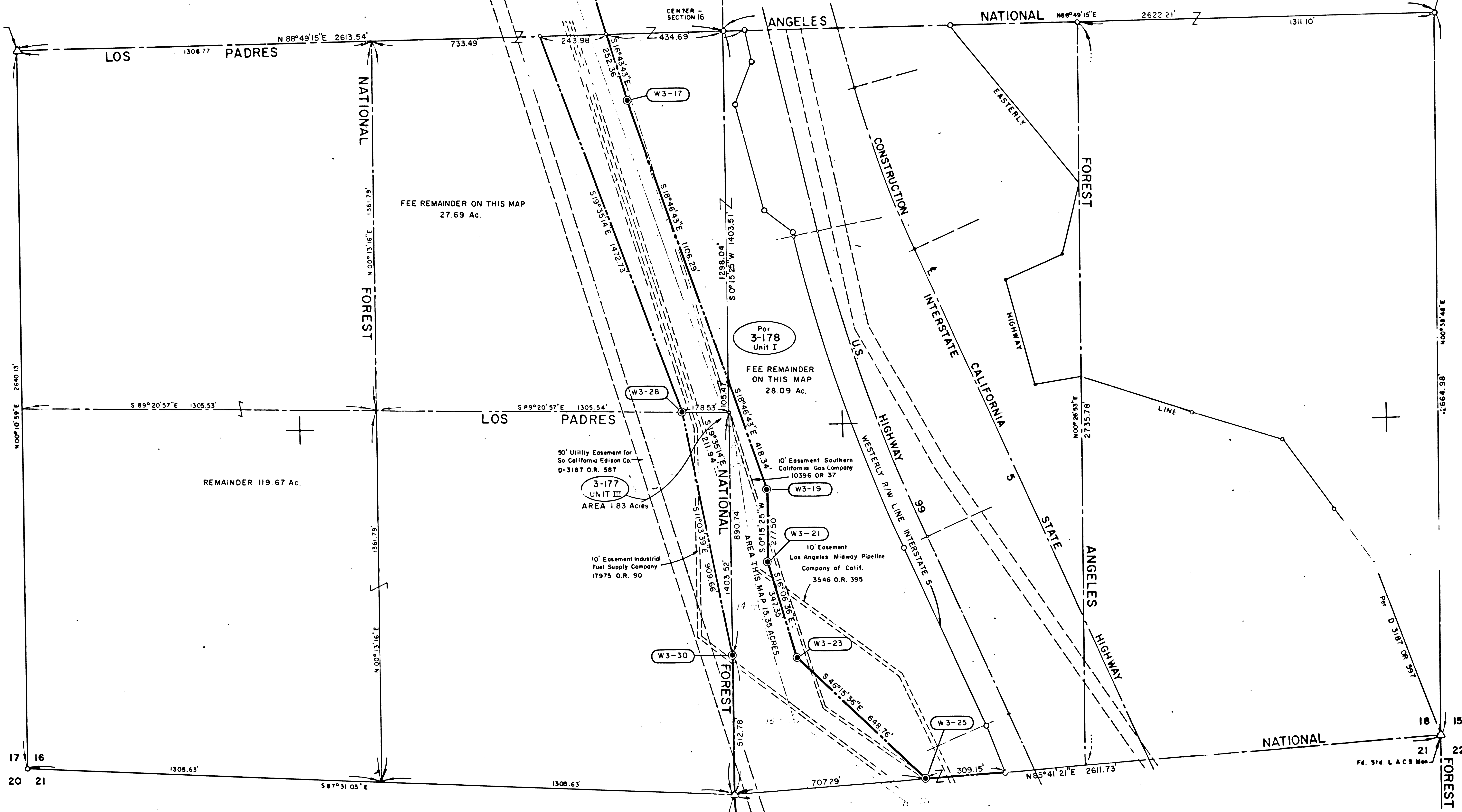
F.M. 211193-6

F.M. 21193-6

Fd. Std. L.A.C.S. Mon  
# 1/4 Cor. Sec. 16

SEE MAP NO. M-24P-0011

E 1/4 Cor. Sec. 16

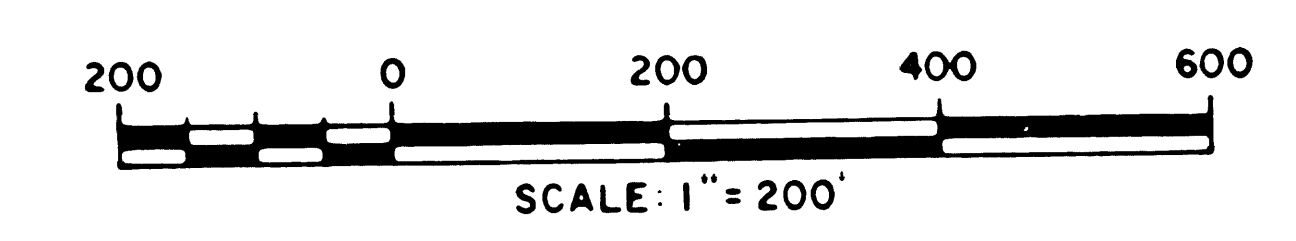


SEE MAP NO. M-24P-0014

NOTE: TOTAL AREA PARCEL 3-178 UNIT I = 32.84 ACRES  
TOTAL AREA REMAINDER RIGHT = 96.01 ACRES  
TOTAL AREA REMAINDER LEFT = 69.47 ACRES

D.W.R. MONUMENT

⊙ = 3/4" I.P. & Brass Plug in Conc.



REF R800100 857

Bearings and Distances shown are based on California Coordinate System, Zone 5.

\* AREA ON THIS MAP

PARCEL NUMBER	TITLE REPORT NUMBER	NAME OF OWNER	GROSS AREA	NET AREA	PERMANENT AREA	TEMPORARY AREA	RT.	LT.	FEE REMAINDER
3-177 Unit III		KINSEY, G.E., ET UX	183 Ac.						119.97 Ac.
3-178 Unit I	6400093	CHING, N. WO	1535 Ac.	*					27.69 Ac. 28.09 Ac.

REV.	DATE	DESCRIPTION	BY	APP'D.
7	4-13-70	Revised Alignment		
6	3-20-70	Revised Area Pcl. 3-178 Unit I		
5	1-29-70	Revised to Conform with Alignment of Lined Channel		
4	4-23-69	Revised Gorman Creek Channel Deleted Peace Valley Pipeline		
3	5-1-68	Vesting Change Pcls 3-3165 & 3-3166		
2	10-3-67	Added Canal Easement to Flowage Easement		
1	12-4-67	Original Appraisal Map signed by Chief, Design & Construction Branch on May 16, 1966.		

STATE OF CALIFORNIA  
THE RESOURCES AGENCY  
DEPARTMENT OF WATER RESOURCES  
SURVEYS & MAPPING UNIT

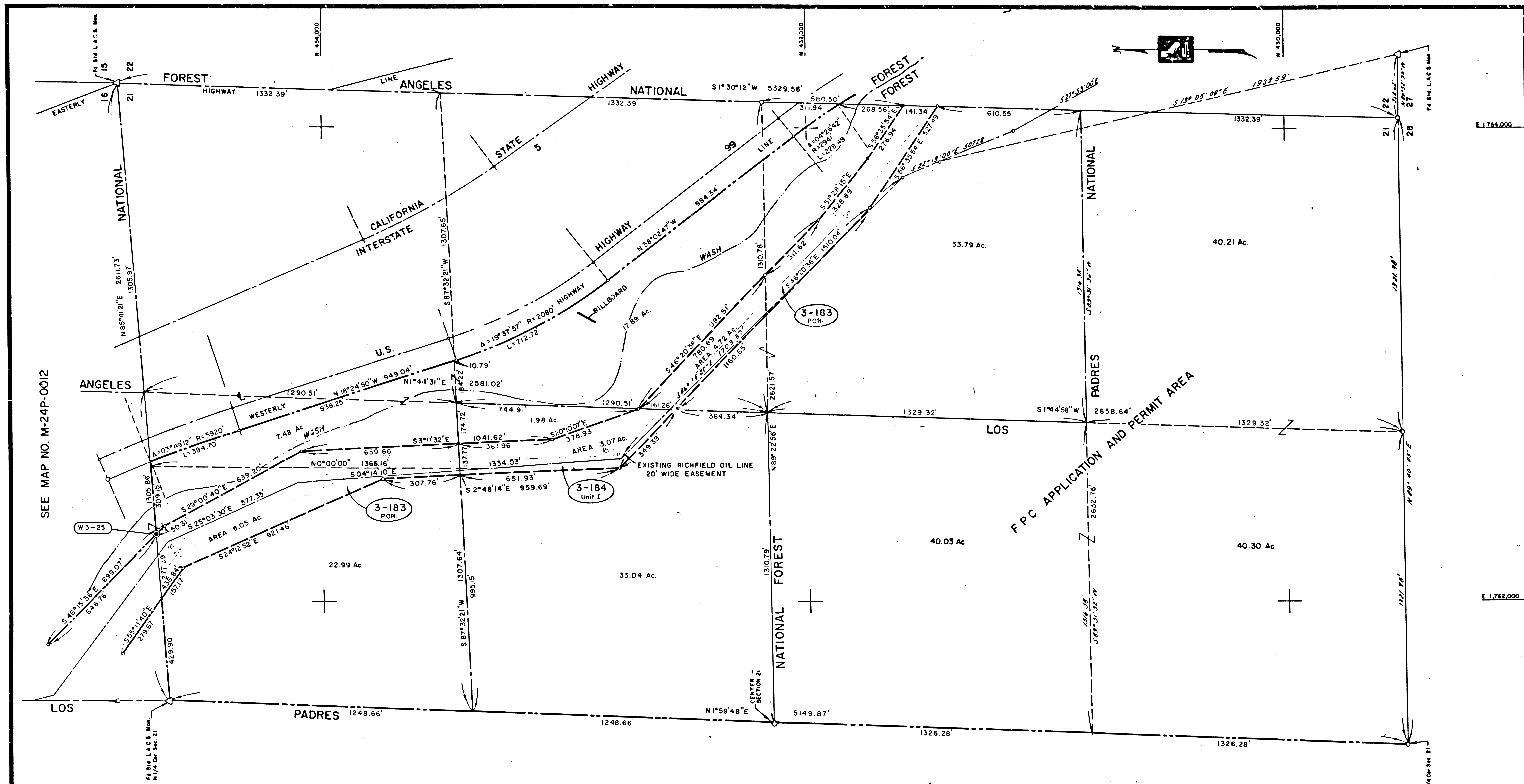
CALIFORNIA AQUEDUCT  
WEST BRANCH DIVISION  
GORMAN CREEK CHANNEL IMPROVEMENT  
MONUMENTS  
S 1/2 SECTION 16, T7N, R18W - SBB&M

DRAWN J.P. Worrell January - 1967	SUBMITTED <i>[Signature]</i> J.P. Worrell	APPROVED: DATE: <i>[Signature]</i> 1/24/70
CHECKED H.L. Berg 2-6-67	RECOMMENDED FOR ACQUISITION <i>[Signature]</i>	DRAWING NUMBER M-24P-0012

APRIL 13, 1970 JAN 29, 1970  
7/28/70 MARCH 20, 1970

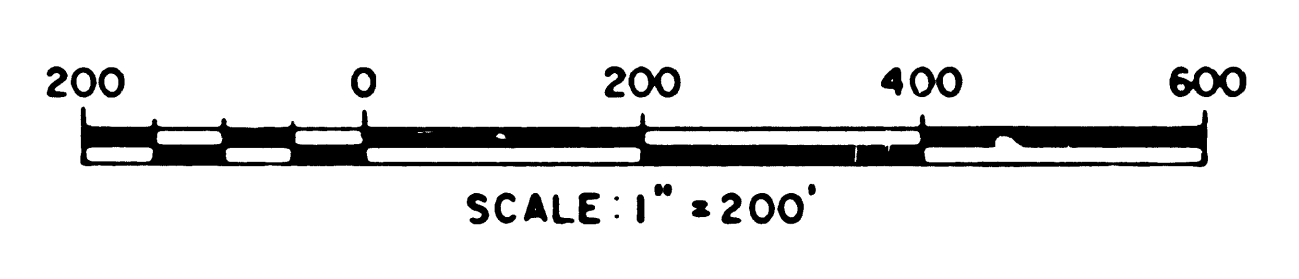
F.M. 21193-7

F.M. 21193-7



SEE MAP NO. M-24P-0012

D.W.R. MONUMENT  
 © = 3/4" I.P. & Brass Plug in Conc.  
 REF R800100 857



NOTE:  
 (1) Bearings and Distances shown are based on California Coordinate System, Zone 5.  
 (2) Condemnation action is to be amended to reflect change in acquisition line as per rev No. 3

PARCEL NUMBER	TITLE REPORT NUMBER	NAME OF OWNER	GROSS AREA	NET AREA	PERMANENT AREA	TEMPORARY AREA	RT.	LT.
3-183	6400090	CHING, HUNG WO	92.92 Ac.	92.92 Ac.				
3-184 Unit I	6400091	KINSEY, G. E.	38.09 Ac.	38.09 Ac.				

REV	DATE	DESCRIPTION	SUB	APP'D
4	2-2-70	Revised to Conform with Alignment of Lined Channel		
3	4-24-69	Rev. Gorman Creek Channel; Deleted Fence Valley Pipeline		
2	2-1-67	Rev Acq Line Pct 3-184 Unit II		
1	6-7-66	Deleted Pct 3-183 Unit I, Rev Acq Line Pct 3-183 & 3-184 Units I		

Retraced: Original Tracing Signed By CHIEF, Design & Construction Branch # 2/25/66

STATE OF CALIFORNIA  
 THE RESOURCES AGENCY  
 DEPARTMENT OF WATER RESOURCES  
 SURVEYS & MAPPING UNIT

CALIFORNIA AQUEDUCT  
 WEST BRANCH DIVISION  
 GORMAN CREEK CHANNEL IMPROVEMENT  
 MONUMENTS  
 EAST 1/2 SECTION 21, T7N, R18W-S.B.B&M.

DRAWN MCCAUSLAND 9-30-65	SUBMITTED FISH FOR FILE WORRELL 8-67	APPROVED: DATE:
CHECKED TOUTLAND 2-17-67	RECOMMENDED FOR ACQUISITION	DRAWING NUMBER M-26P-0001

F.M. 21193-8

JUL 2 1970  
 FEB 2 1970  
 7/28/70  
 F.M. 21193-3