

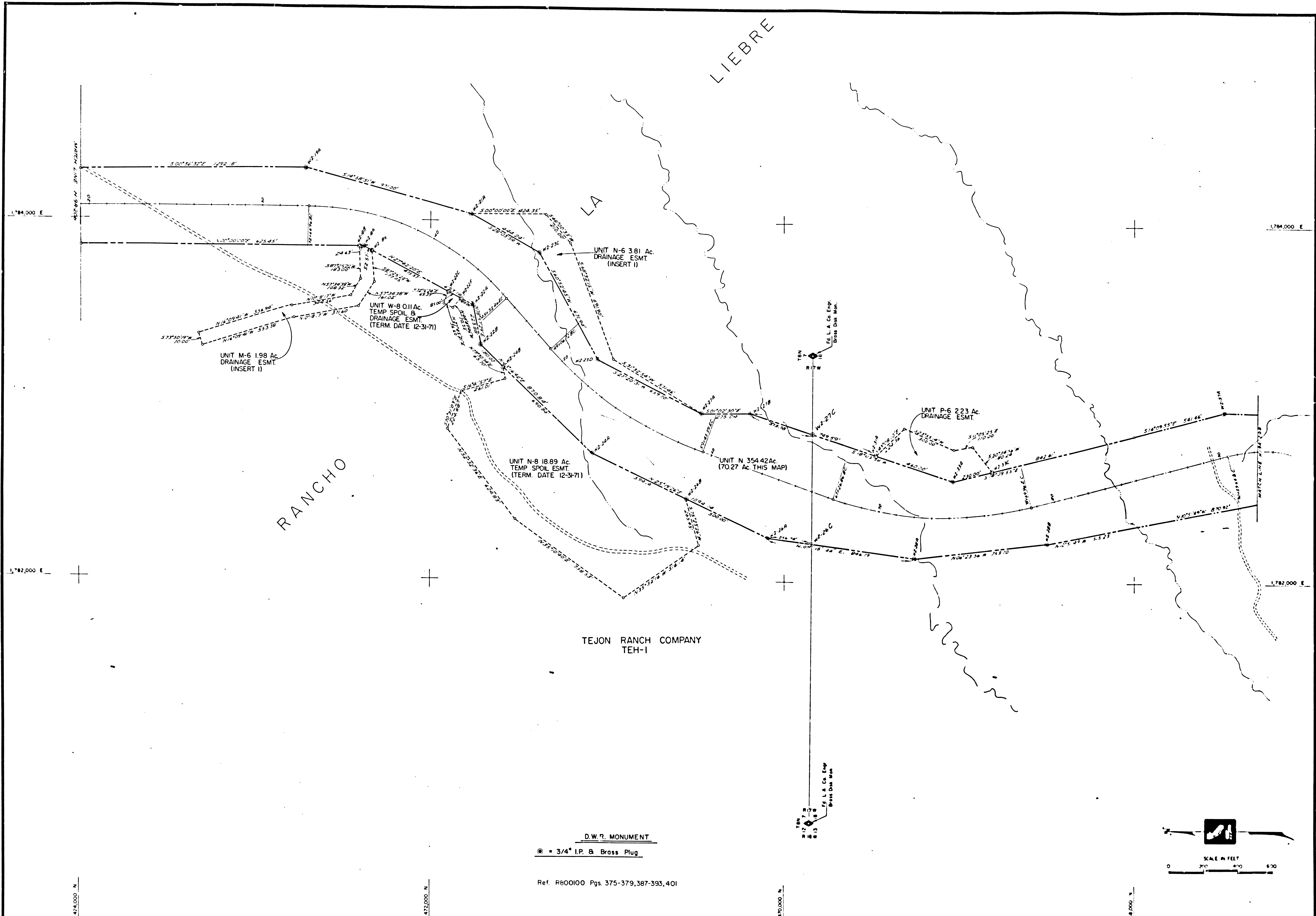
- D.W.R. MONUMENT**
- = 3/4" I.P. & Brass Plug
 - = 2" I.P. & 3 1/2" Brass Disc in Conc.

Ref. R800100 Pgs. 128,129,254,371-374,386,399,400

REVISIONS	DATE	BY	REVISIONS	DATE	BY	DATE	BY

STATE OF CALIFORNIA THE RESOURCES AGENCY DEPARTMENT OF WATER RESOURCES SOUTHERN DISTRICT SURVEYS & MAPPING UNIT	PORTION RANCHO LA LIEBRE STATE WATER PROJECT WEST BRANCH DIVISION MONUMENT MAP	LOS ANGELES CO. DRAWING NO. H-9A-206 SHEET 19 OF 19
--	---	---

F.M. 21197-1 F.M. 21197-1



RANCHO

LIEBRE

LA

TEJON RANCH COMPANY
TEH-1

D.W.R. MONUMENT
● = 3/4" I.P. & Brass Plug

Ref. R600100 Pgs. 375-379,387-393,401



474,000 N.

475,000 N.

470,000 N.

448,000 N.

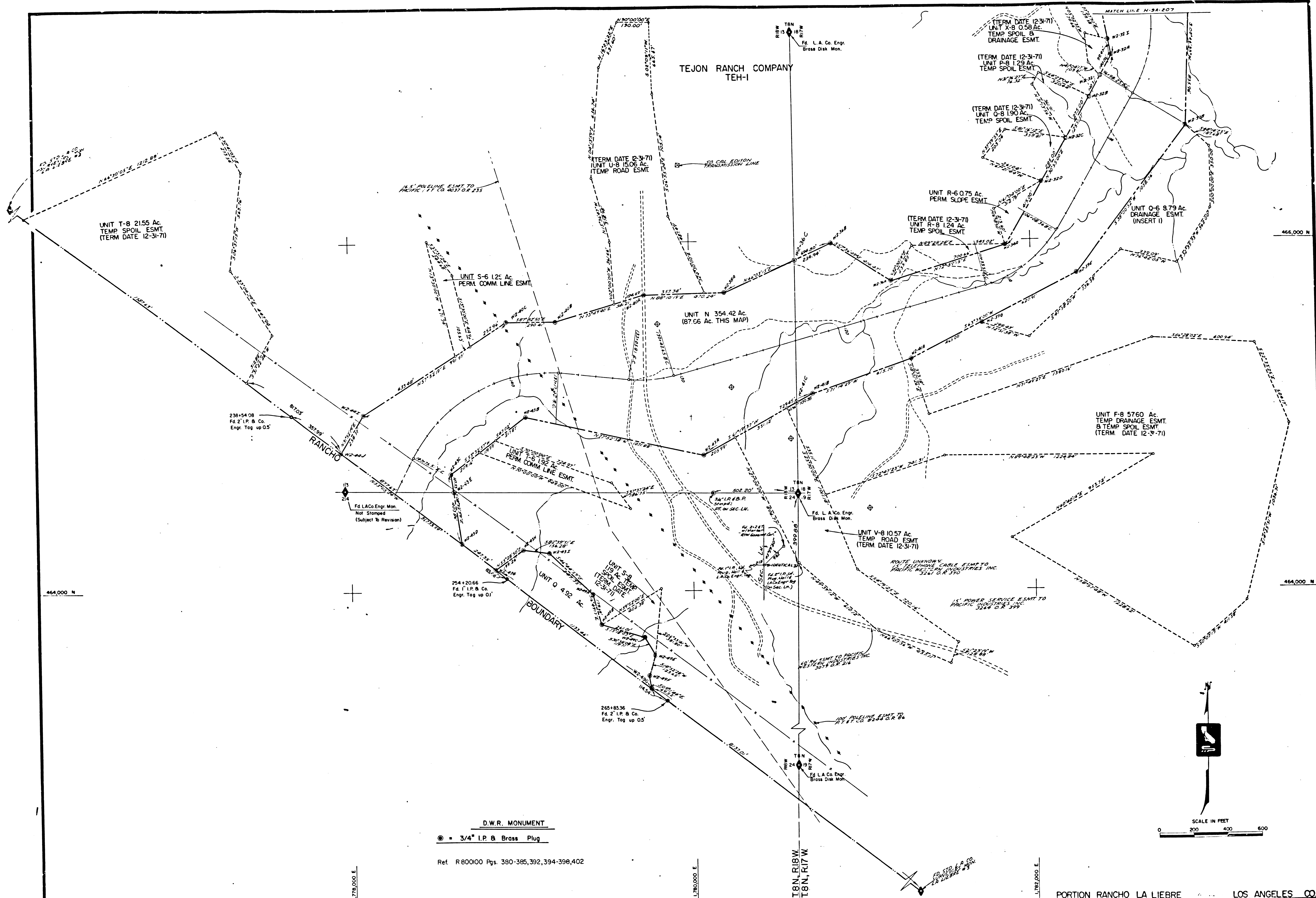
STATE OF CALIFORNIA THE RESOURCES AGENCY DEPARTMENT OF WATER RESOURCES SOUTHERN DISTRICT - PLATE & WATER NO. 1 -		STATE WATER PROJECT WEST BRANCH DIVISION MONUMENT MAP		LOS ANGELES CO DRAW NO. H-9A-207 SHEET 20 OF
--	--	---	--	--

F.M. 211197-2

F.M. 21197-2

Revised Unit W-8
THIS MAP REDRAWN

3-5-69	D.
4-7-69	DY
DATE	BY



D.W.R. MONUMENT
 ● = 3/4" I.P. & Brass Plug

Ref. R 800100 Pgs. 380-385, 392, 394-398, 402

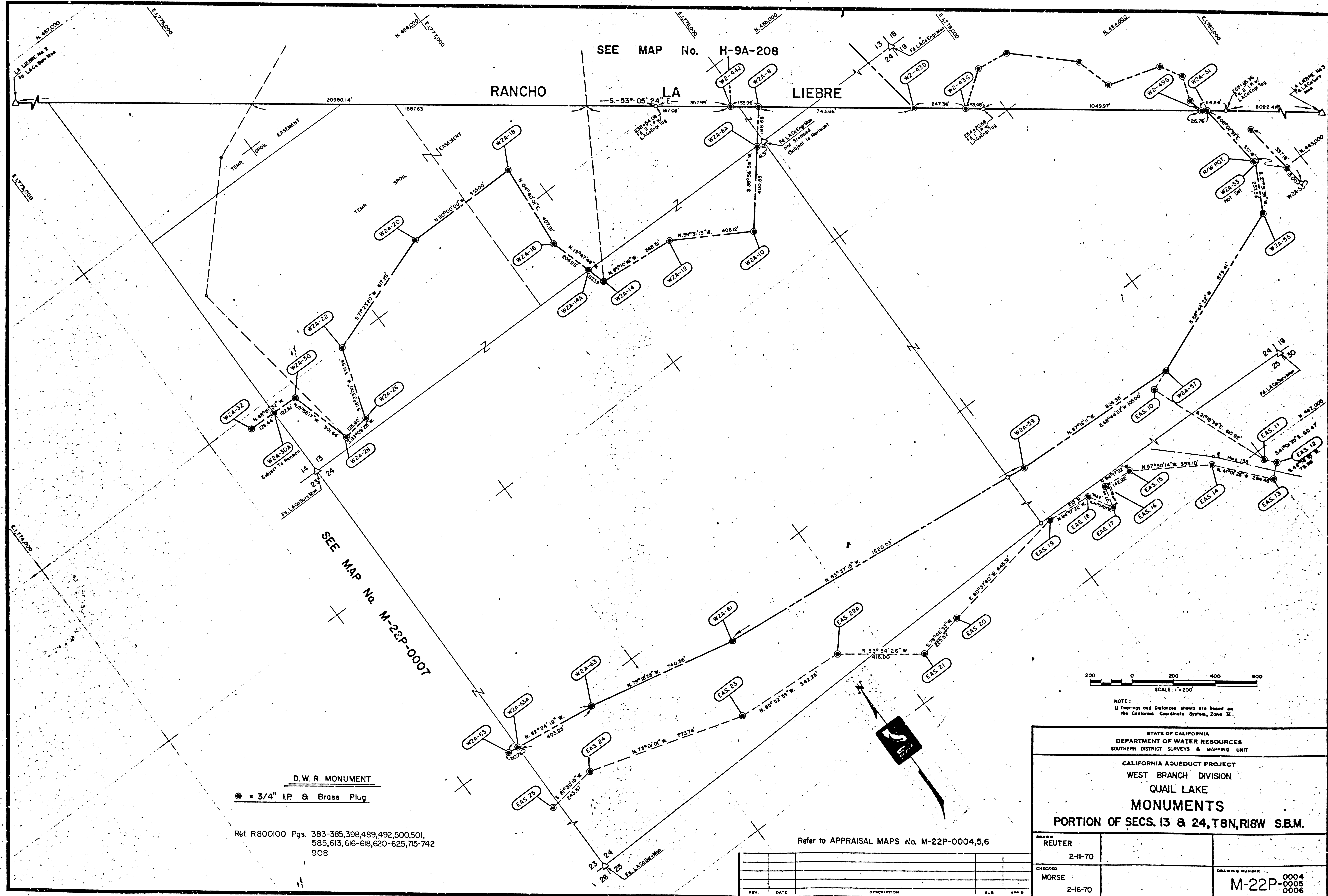
REVISIONS	DATE	BY	REVISIONS	DATE	BY
Revised For Unit N-8, Unit N-9, Unit X-9	5-8-49	D.Y.			
THIS MAP REDRAWN	4-7-49	D.Y.			

STATE OF CALIFORNIA
 THE RESOURCES AGENCY
DEPARTMENT OF WATER RESOURCES
 SOUTHERN DISTRICT
 SURVEYS & MAPPING UNIT

PORTION RANCHO LA LIEBRE LOS ANGELES CO
 STATE WATER PROJECT
 WEST BRANCH DIVISION
 MONUMENT MAP
 DRAWING NO. H-9A-208 SHEET 21 OF
 F.M. 21197-3

F.M. 21197-3

F.M. 21197-3



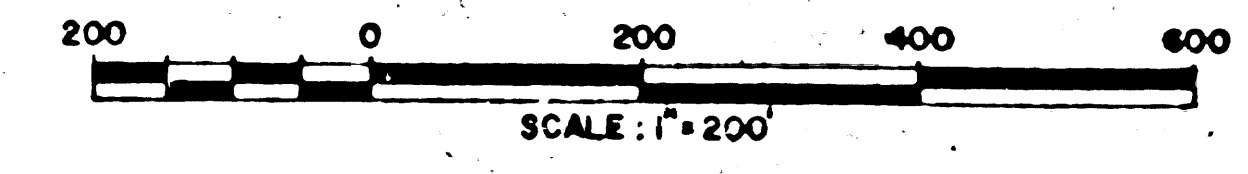
SEE MAP No. H-9A-208

SEE MAP No. M-22P-0007

D. W. R. MONUMENT
 ● = 3/4" I.P. & Brass Plug

Ref. R800100 Pgs. 383-385, 398, 489, 492, 500, 501, 585, 613, 616-618, 620-625, 715-742, 908

Refer to APPRAISAL MAPS No. M-22P-0004,5,6



NOTE:
 1) Bearings and Distances shown are based on the California Coordinate System, Zone 12.

STATE OF CALIFORNIA
 DEPARTMENT OF WATER RESOURCES
 SOUTHERN DISTRICT SURVEYS & MAPPING UNIT

CALIFORNIA AQUEDUCT PROJECT
 WEST BRANCH DIVISION
 QUAIL LAKE
 MONUMENTS
 PORTION OF SECS. 13 & 24, T8N, R18W S.B.M.

DRAWN REUTER 2-11-70		
CHECKED MORSE 2-16-70		DRAWING NUMBER M-22P-0004 0005 0006

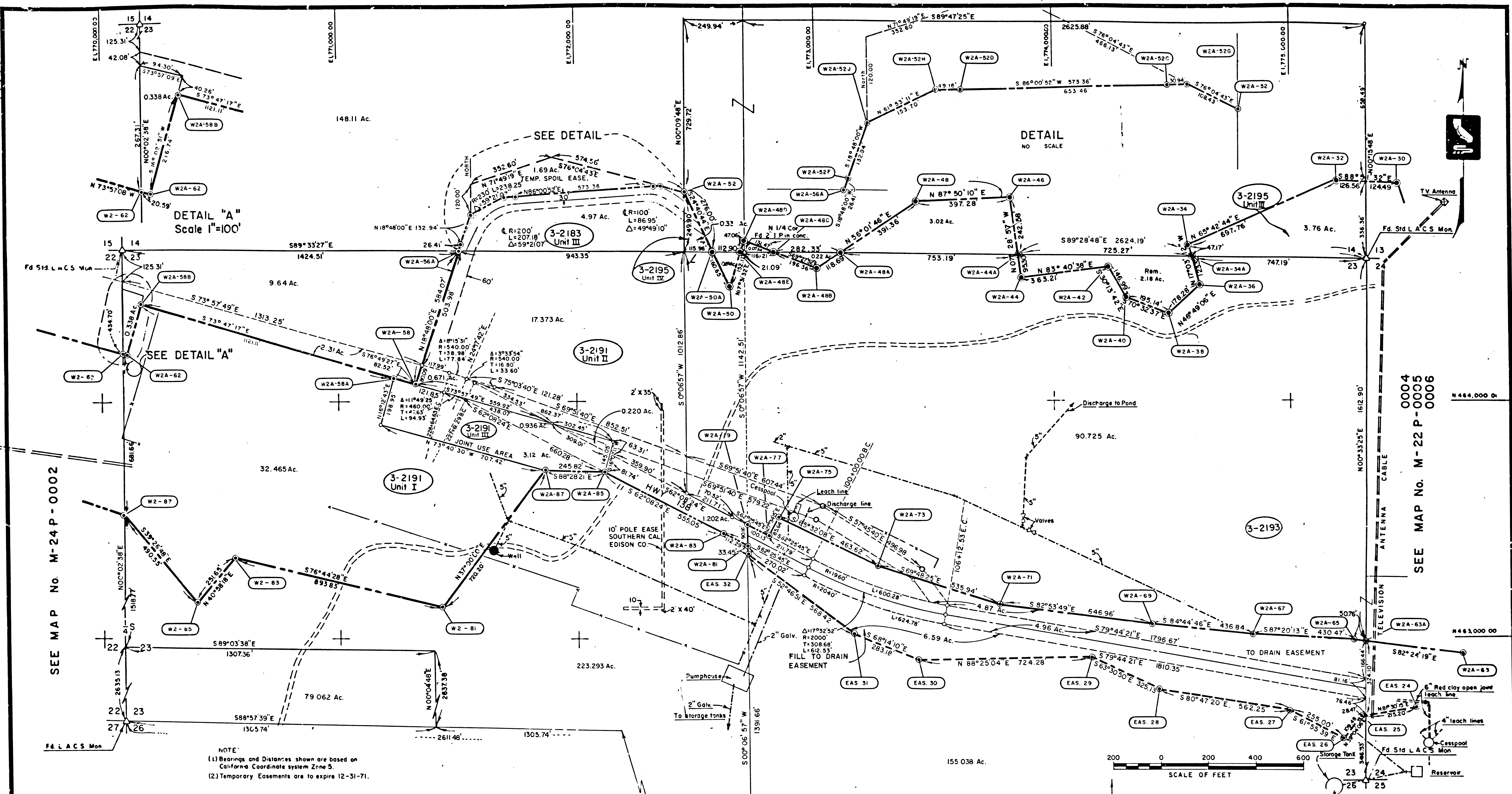
REV.	DATE	DESCRIPTION	SUB.	APP'D.

F.M. 21197-4

F.M. 21197-4

4 Aug 1970

DRAFT	DATE	ENGR
1	5-18-67	



NOTE:
 (1) Bearings and Distances shown are based on California Coordinate system Zone 5.
 (2) Temporary Easements are to expire 12-31-71.

STATE OF CALIFORNIA
 THE RESOURCES AGENCY
 DEPARTMENT OF WATER RESOURCES
 SURVEYS & MAPPING UNIT
 CALIFORNIA AQUEDUCT
 WEST BRANCH DIVISION
 QUAIL LAKE
 MONUMENTS
 SECTION 23, T8N, R18 W, S.B.B. & M.

UNIT	TITLE REPORT NO.	NAME	AREA	FEE	AREA EASEMENT	PERM	TEMP	RIGHT	LEFT
3-2191 Unit III	6449911	CHING, HUNG WO	32.32 Ac.	3.38 Ac.	16.42 Ac.			SEE	MAP
3-2183	6449907	KINSEY, G.E. et ux	90.725 Ac.		1.69 Ac.			SEE	148.11 Ac.
3-2191 Unit III	6449907	CHING, HUNG WO	4.97 Ac.	4.97 Ac.					
3-2191 Unit II	6449999	CHING, HUNG WO	19.24 Ac.	17.37 Ac.					
3-2191 Unit I	6449999	CHING, HUNG WO	32.46 Ac.	32.46 Ac.				223.29 Ac.	
3-2195 Unit I	6497914		3.02 Ac.	3.02 Ac.					
3-2195 Unit III	6497914		3.76 Ac.	3.76 Ac.					57.97 Ac.
3-2195 Unit II	6497914	KINSEY, G.E. et ux	0.33 Ac.	0.33 Ac.					
3-2195 Unit IV	6497914		0.07 Ac.	0.07 Ac.					
3-2195 Unit V	6497914								
PARCEL NUMBER	TITLE REPORT NO.	NAME	AREA	FEE	AREA EASEMENT	PERM	TEMP	RIGHT	LEFT

D.W.R. MONUMENT
 @ = 3/4" I.P. & Brass Plug
 REF R800100 Pgs 288-9, 302, 314-15
 494, 502-3, 05-6
 609-13, 616, 24-7, 31, 33-4, 909
 921-22

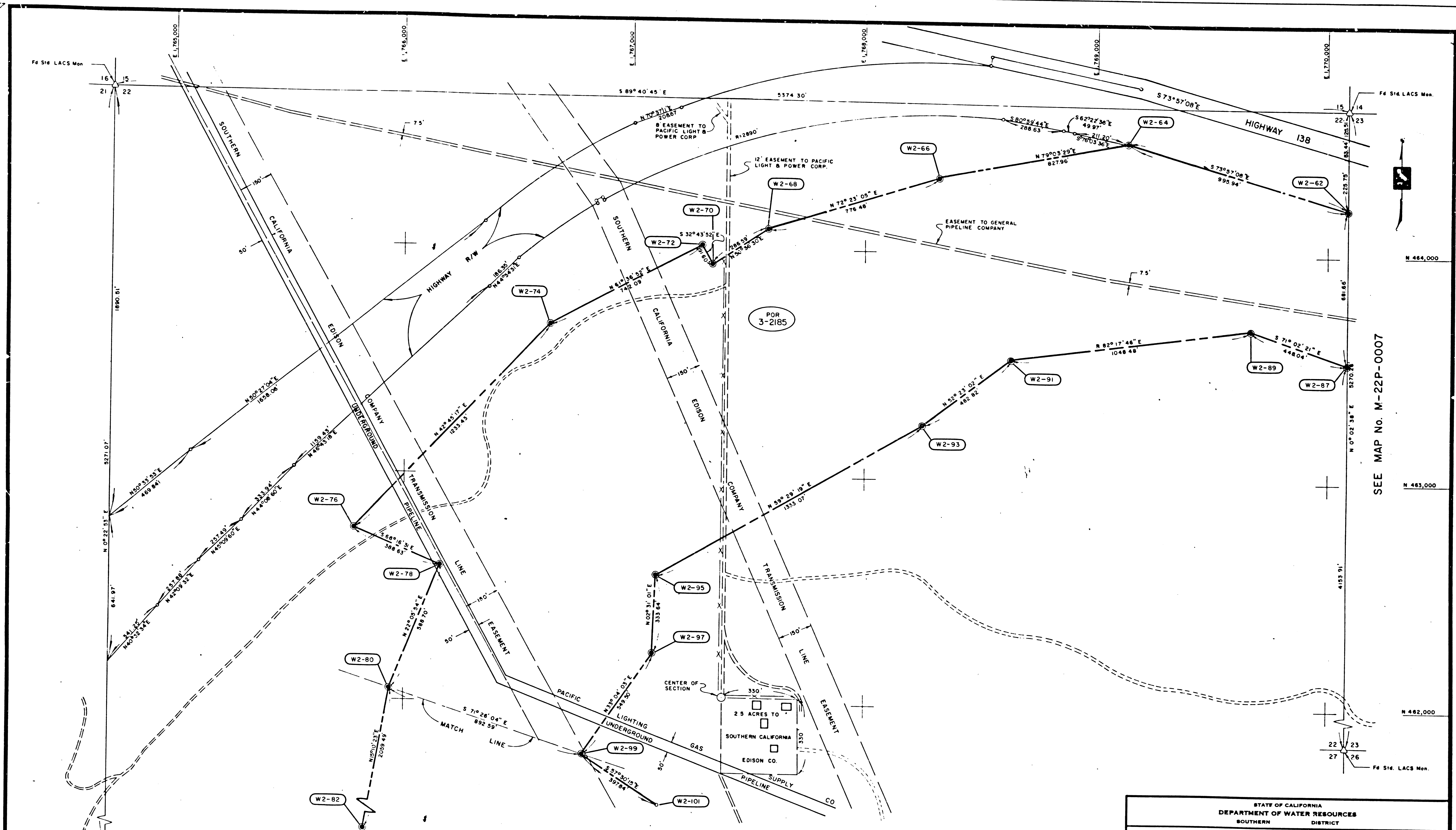
REV	DATE	DESCRIPTION
5	6-17-70	Revised Highway Boundaries
4	12-1-69	Revised Acq. Line Pct. 3-2183 Unit III Added Access Road
3	2-18-69	Entire R/W Revised
2	8-4-67	Rev Acq Line all Parcels
1	7/13/67	Revised Acquisition Line

DRAWN M.E. McCasland Redrawn by PUCKEY 1/21/69	CHECKED R. J. ...	APPROVED: DATE: 6-20-70
DRAWING NUMBER M-22P-0007		

F.M. 21197-5

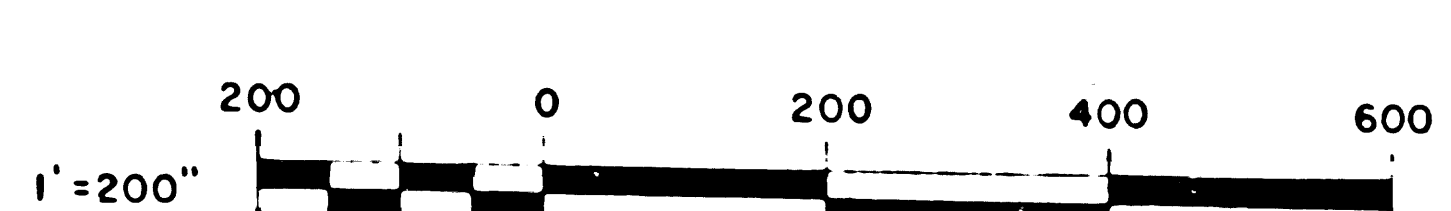
10-23-70
 4 AUG 1970
 F.M. 21197-5

7.8.67
22.4.68
6.5.67



SEE MAP No. M-22P-0007

SEE MAP No. M-24P-0003



D.W.R. MONUMENT

⊙ = 3/4" I.P. & Brass Plug

NOTE
Bearings and Distances shown are based on California Coordinate System, Zone 5

3-2185	6449910	CHING, HUNG WO	160.21 Ac	160.21 Ac			104.43 Ac.	303.67 Ac
PARCEL NUMBER	TITLE REPORT NUMBER	NAME OF OWNER	GROSS AREA	NET AREA	PERM AREA	TEMP AREA	RIGHT REMAINDER	LEFT REMAINDER

NOV. 1967 - JAN. 1968 R800100 pg. 290-315

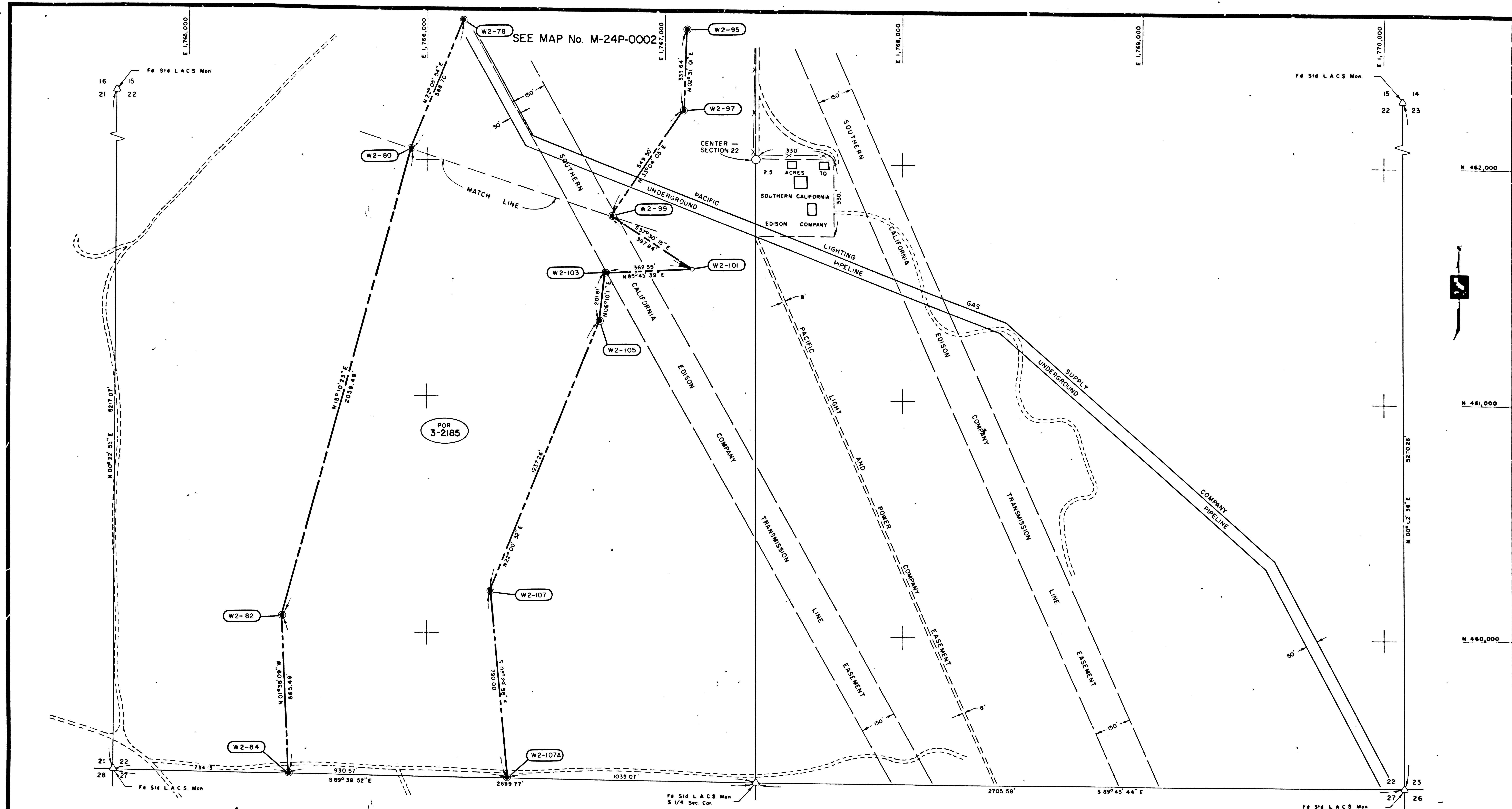
REV	DATE	DESCRIPTION	SUB	APP'D
2	5-24-67	Change Location of Hwy R/W		
1	2-1-67	Change Easement Areas to Fee Acquisition		

STATE OF CALIFORNIA DEPARTMENT OF WATER RESOURCES SOUTHERN DISTRICT	
CALIFORNIA AQUEDUCT PROJECT WEST BRANCH DIVISION QUAIL CANAL MONUMENTS PORTION OF SECTION 22, T8N, R18W - S.B.B. & M.	
DRAWN J.P. Worrall	APPROVED: DATE: <i>[Signature]</i> <i>[Date]</i>
CHECKED <i>[Signature]</i> 8/24/66	RECOMMENDED FOR ACQUISITION <i>[Signature]</i> DRAWING NUMBER M-24P-0002

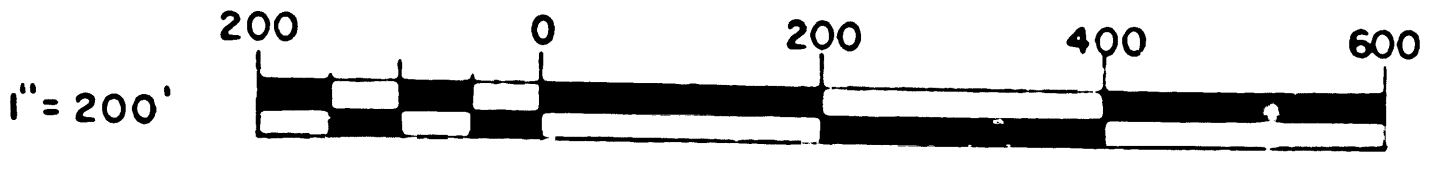
F.M. 21197-6

F.M. 21197-6

12-22-66
 FROM 5-21-67
 6-5-67



SEE MAP No M-24P-0004



NOTE:
 Bearings and Distances shown are based
 on California Coordinate System, Zone 5

D.W.R. MONUMENT

⊙ = 3/4" I.P. & Brass Plug

3-2185	6449910	CHING, HUNG WO	160.21 Ac	160.21 Ac			30367 Ac	104.43 Ac
PARCEL NUMBER	TITLE NUMBER	NAME OF OWNER	GROSS AREA	NET AREA	PERM AREA	TEMP AREA	LEFT REMAINDER	RIGHT REMAINDER

NOV. 1967 - JAN. 1968 R800100 pg. 290-315

REV	DATE	DESCRIPTION	SUB	APP'D
1	2-1-67	Change Easement Areas to Fee Acquisition.		

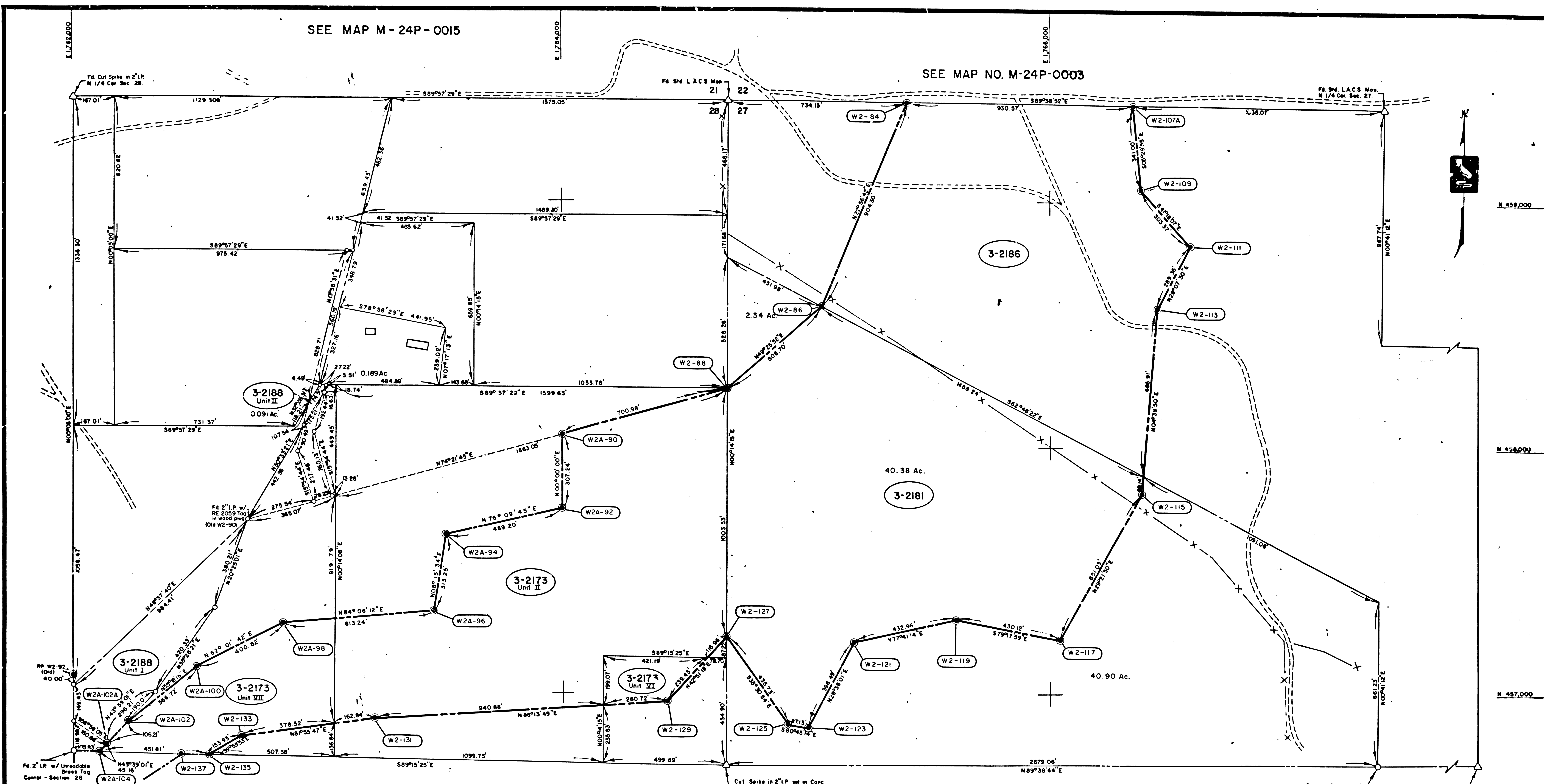
STATE OF CALIFORNIA DEPARTMENT OF WATER RESOURCES SOUTHERN DISTRICT			
CALIFORNIA AQUEDUCT PROJECT WEST BRANCH DIVISION QUAIL CANAL MONUMENTS PORTION OF SECTION 22, T8N, R18W - S.B.B&M			
DRAWN J.P. Worrall March 1966	SUBMITTED <i>[Signature]</i>	APPROVED: <i>[Signature]</i>	DATE: 4/16
CHECKED <i>[Signature]</i>	RECOMMENDED FOR ACQUISITION <i>[Signature]</i>	CHIEF DESIGNER AND CONSTRUCTION BRANCH <i>[Signature]</i>	DRAWING NUMBER M-24P-0003

F.M. 211197-7

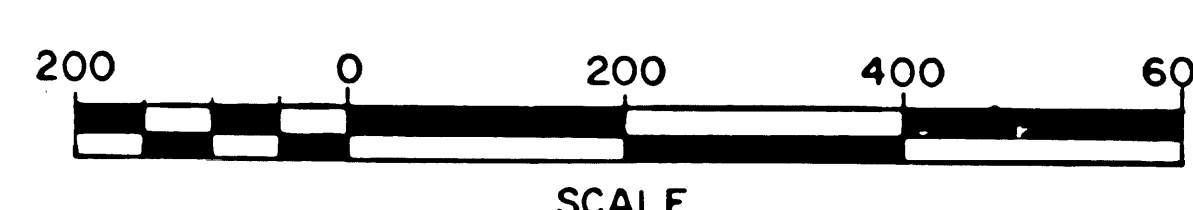
F.M. 21197-7

SEE MAP M-24P-0015

SEE MAP NO. M-24P-0003



SEE MAP NO. M-24P-0005



NOTE
Bearings and Distances shown are based on California Coordinate System, Zone 5
Easement for Wagon Road in Parcel 3-2181, dated 14th July, 1914, not plotted due to lack of information recorded in Book 5851, page 88 of Deeds

ORIGINAL MAP SIGNED BY CHIEF, DESIGN & CONSTRUCTION BRANCH 4/1/66

UNIT	ACQ. NO.	OWNER	GROSS AREA	NET AREA	PERMANENT AREA	TEMPORARY AREA	RIGHT REMAINDER	LEFT REMAINDER
3-2173 Unit II	6494973	SANDERLIN, CLAY	28.62 Ac.	28.62 Ac.	---	---	17.14 Ac.	4.92 Ac.
3-2173 Unit VII	6494973	SANDERLIN, C. - WEGER, C.R. et. al.	1.46 Ac.	1.46 Ac.	---	---	---	3.53 Ac.
3-2173 Unit VIII	6494973	SANDERLIN, C. - NICKLES, LEE et. al.	6.43 Ac.	6.43 Ac.	---	---	7.98 Ac.	1.05 Ac.
3-2181	6449919	CHING, HUNG WO	40.38 Ac.	40.38 Ac.	---	---	2.34 Ac.	40.90 Ac.
3-2186	6449913	DAVIDSON, E. P.	33.67 Ac.	33.67 Ac.	---	---	9.86 Ac.	141.80 Ac.
3-2188 Unit I	6449917	STATE OF CALIFORNIA	4.41 Ac.	4.41 Ac.	---	---	---	---
3-2188 Unit II	6449917	STATE OF CALIFORNIA	0.09 Ac.	0.09 Ac.	---	---	---	---

D.W.R. MONUMENT
● = 3/4" I.P. & Brass Plug

Ref. R800100 Pgs. 268-282
675-677

REV.	DATE	DESCRIPTION	BY	APP'D.
6	9-4-69	Revised Acq. Line Pci's 3-2173 Units II & VII, Deleted Pci's 3-2184, 3-2172, 3-2173 Units I, III, IV & VIII & 3-2171	J.P. Worrell	
5	1-12-68	Revised Acq. Line Pci's 3-2172 & 3-2184	J.P. Worrell	
4	12-8-67	Revised Acq. Line Pci's 3-2172 & 3-2184	J.P. Worrell	
3	3-14-67	Added Parcels 3-2173 Unit VI & VII Rev. 3-2173 II	J.P. Worrell	
2	2-1-67	Change Easement Area to Fee Acquisition	J.P. Worrell	
1	10-11-66	Change Acquisition Line All Parcels	J.P. Worrell	

STATE OF CALIFORNIA
THE RESOURCES AGENCY
DEPARTMENT OF WATER RESOURCES
SURVEYS & MAPPING UNIT

CALIFORNIA AQUEDUCT
WEST BRANCH DIVISION
QUAIL CANAL
MONUMENTS

NW 1/4 SEC. 27, NE 1/4 SEC. 28, T8N, R18W - S.B.B&M

APPROVED: DATE: 6-15-67
DRAWING NUMBER: M-24P-0004

F.M. 21197-8

F.M. 21197-8
JAN 13 1970