

DATE CHECKED 11-70
 W. Brush
 DATE 11-70
 J. Munoz
 DATE 11-70
 J. Munoz
 DATE 11-70
 J. Munoz

APPROVED
 INTERDEPARTMENTAL ENGINEERING COMMITTEE

Note:
 All bearings are based on Calif. Coordinate System, Zone 7
 Combination Factor is .9999761

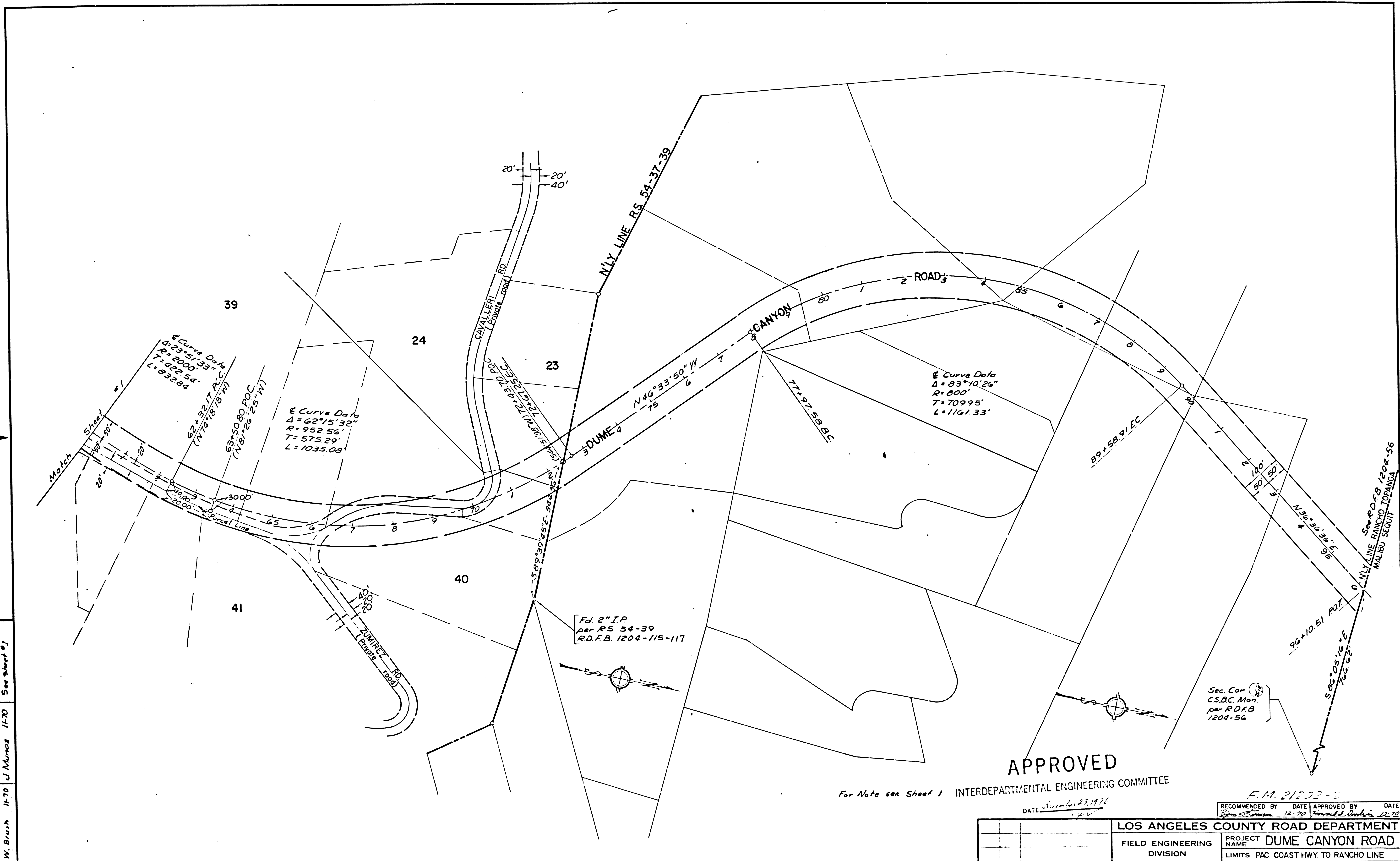
F.M. 21202-1

APPROVED	<i>J. J. Harker</i>	12-15-70
SUBMITTED	<i>W. J. ...</i>	12-15-70
REVIEWED	<i>W. J. ...</i>	12-15-70
RECOMMENDED BY		DATE
APPROVED BY		DATE

LOS ANGELES COUNTY ROAD DEPARTMENT	
FIELD ENGINEERING DIVISION	PROJECT NAME DUME CANYON ROAD
	LIMITS PAC COAST HWY. TO RANCHO LINE
DATE	BY
SCALE	HORIZ. VERT. 1"=100'
PROJECT NO.	28162
	SHEET 1 OF 2 SHTS.
	DWG. RDM 42.01

F.M. 21202-1

W. Brush 11-70 J. Munoz 11-70 See sheet #1



APPROVED

For Note see Sheet 1 INTERDEPARTMENTAL ENGINEERING COMMITTEE

DATE: <u>November 23, 1970</u>		RECOMMENDED BY: <u>F.M. 21202-2</u>		DATE: <u>12-70</u>		APPROVED BY: <u>[Signature]</u>		DATE: <u>12-70</u>	
LOS ANGELES COUNTY ROAD DEPARTMENT				PROJECT NAME: <u>DUME CANYON ROAD</u>					
FIELD ENGINEERING DIVISION				LIMITS: <u>PAC COAST HWY TO RANCHO LINE</u>					
DATE: <u>11-70</u>		BY: <u>[Signature]</u>		PROJECT NO. <u>28162</u>		SHEET 2 OF 2 SHTS.		DWG. NO. <u>RDM 42.02</u>	
REVISIONS:		SCALE: HORIZ. <u>1"=100'</u>		VERT. <u>1"=100'</u>		NO. <u>28162</u>		NO. <u>42.02</u>	

F.M. 21202-2

DATE: 12/15/05
 CHECKER: F.G. Alverson II
 DATE: 02-7-04
 DRAWN BY: M. Brush

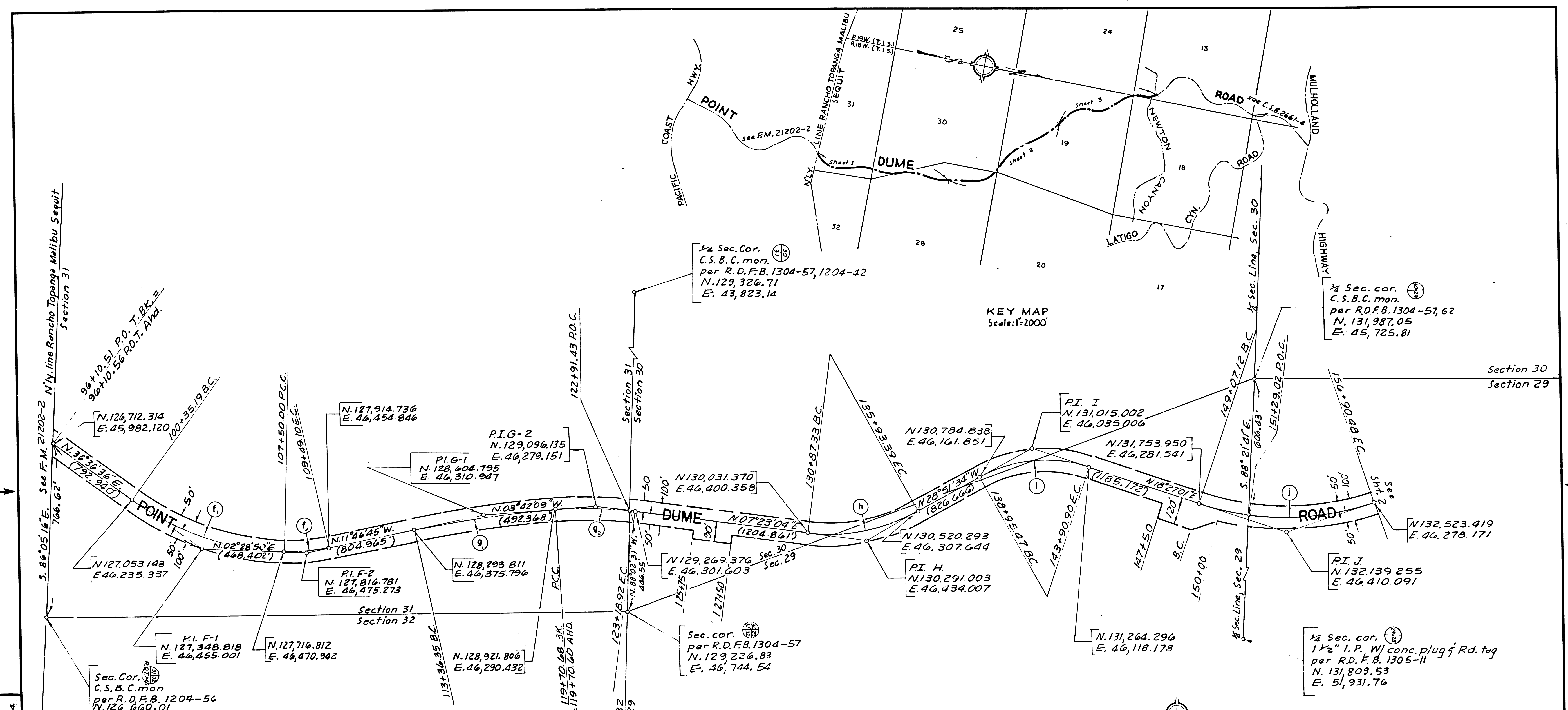
LETTER	Δ	R	T	L
f ₁	34°07'46"	1200'	368.36'	714.81'
f ₂	14°15'35"	800'	100.07'	199.10'
g ₁	8°04'36"	4500'	317.69'	634.33'
g ₂	11°05'13"	1800'	174.70'	348.32'
h	36°14'38"	800'	261.82'	506.06'
i	47°18'35"	400'	262.82'	495.43'
j	37°24'09"	1200'	406.21'	783.36'

Note:
 1. All bearings are based on the California coordinate system, Zone 7. Combination factor = 0.9999410.
 2. Distances shown in parentheses are P.I. to P.I. Zone 7 distances. (Except where otherwise shown).
 3. All coordinates are N. 4, -----, E. 4, 0, -----, Zone 7.
 4. All B.C.'s and E.C.'s will be marked with a Rd. Dept. brass cap monument by Dec. 1974.

APPROVED: <i>Jan K. Williams</i> 4-15-74 DIVISION ENGINEER FIELD ENGR. DIV. DATE	
SUBMITTED: <i>William J. Bennett</i> 4-15-74 DESIGN SECTION DATE	
RECOMMENDED: <i>James E. 7849</i> 4-15-74 DATE REVIEWED DATE	
PROJECT NAME: POINT DUME ROAD	
LIMITS: NEWTON CYN. TO RANCHO LINE	
SCALE: HORIZ. 1"=200'	PROJECT NO. 13574
DATE: _____	SHEET 1 OF 3 SHTS. DWG. RDM 42.03

F.M. 21202-3

F.M. 21-02-3



1/4 Sec. Cor.
 C.S.B.C. mon.
 per R.D.F.B. 1304-57, 1204-42
 N. 129,326.71
 E. 43,823.14

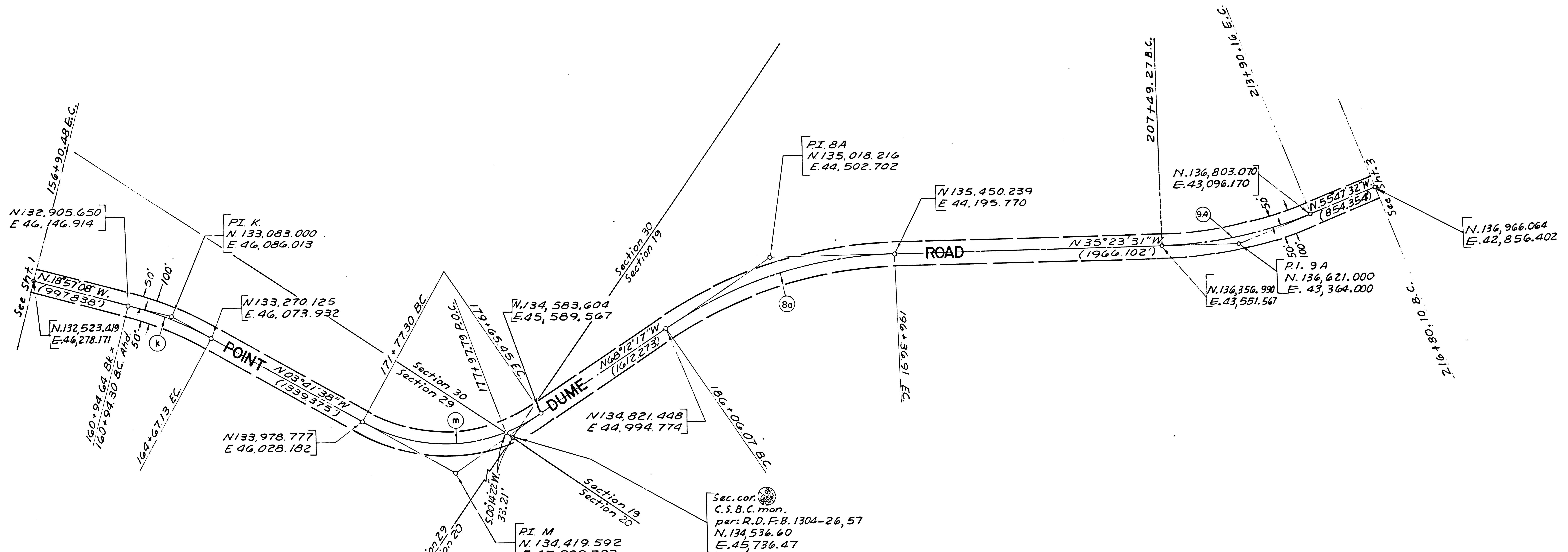
1/4 Sec. cor.
 C.S.B.C. mon.
 per R.D.F.B. 1304-57, 62
 N. 131,987.05
 E. 45,725.81

Sec. cor.
 per R.D.F.B. 1304-57
 N. 129,226.83
 E. 46,744.54

1/4 Sec. cor.
 1 1/2" I.P. W/ conc. plug of Rd. tog
 per R.D.F.B. 1305-11
 N. 131,809.53
 E. 51,931.76

KEY MAP
 Scale: 1"=2000'

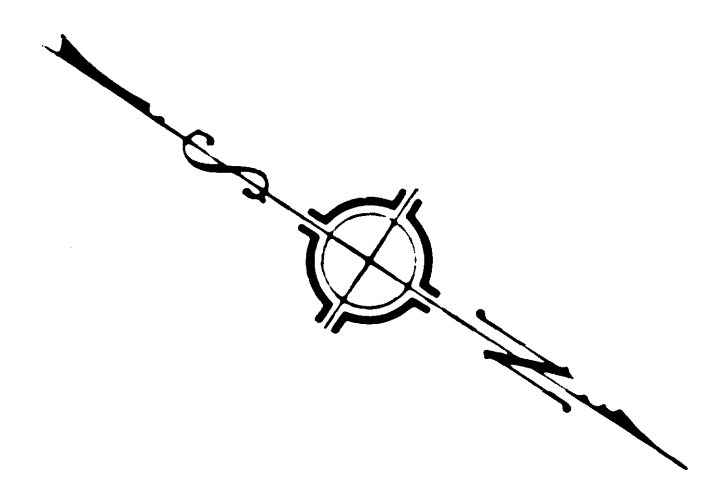
W. Brush 02-74 AG. Alvarado II 4/4 R.D.F.B. 1304



CURVE DATA				
LETTER	Δ	R	T	L
k	15°15'30"	1400'	187.53'	372.83'
m	64°30'39"	700'	441.76'	788.15'
8a	32°48'46"	1800'	529.99'	1030.84'
9A	20°24'01"	1800'	323.87'	640.89'

Sec. Cor. (C.S.B.C. Mon.)
 par: R.D.F.B. 1304-57, 60
 N. 134,515.55
 E. 49,412.45

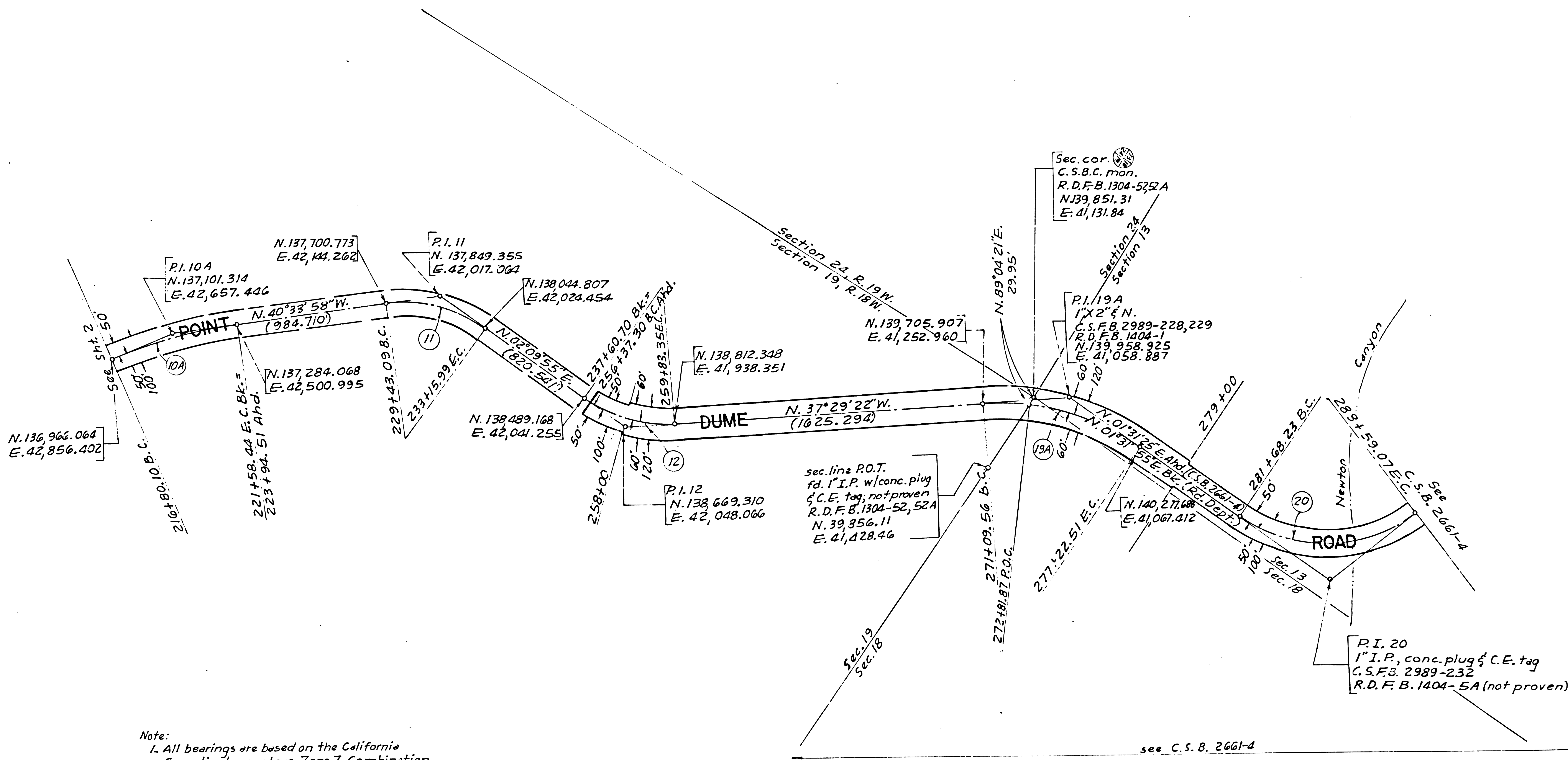
Note:
 1. All bearings are based on the California coordinate system, Zone 7. Combination factor = 0.9999410.
 2. Distances shown in parentheses are P.I. to P.I. Zone 7 distances.
 3. All coordinates are N. 4, -----, E. 4, 0-----Zone 7.
 4. All B.C.'s and E.C.'s will be marked with a Rd. Dept. brass cap monument by Dec. 1974.



ALIGNMENT MAP		RECOMMENDED DATE REVIEWED DATE
LOS ANGELES COUNTY ROAD DEPARTMENT		By <i>[Signature]</i> 1-9-74
FIELD ENGINEERING DIVISION	PROJECT NAME	POINT DUME ROAD
DATE: BY:	LIMITS:	NEWTON CYN. TO RANCHO LINE
REVISIONS	SCALE HORIZ. 1" = 200'	PROJECT NO. 13574
		SHEET 2 OF 3 SHTS. DWG. RDM 42.04

F.M. 21202-4

FN 21202-4



Note:
 1. All bearings are based on the California Coordinate system, Zone 7. Combination factor = 0.9999410
 2. Distances shown in parentheses are P.I. to P.I. Zone 7 distances.
 3. All coordinates are N. 4, 0, E. 4, 0, Zone 7.
 4. All B.C.'s and E.C.'s will be marked with a Rd. Dept. brass cap monument by Dec. 1974.

CURVE DATA

LETTER	Δ	R	T	L
10A	15°13'34"	1800	240.59	478.34
11	42°43'53"	500	195.60	372.90
12	39°39'17"	500	180.28	346.05
19A	39°01'17"	900	318.90	612.95
20	71°58'05"	550	399.36	690.84

DATE: 02-74
 ENGINEER: W. Brush
 PROJECT: FG Alvarado II
 SHEET: 3 OF 3
 DRAWING NO: R8090

ALIGNMENT MAP		RECOMMENDED	DATE REVIEWED	DATE
LOS ANGELES COUNTY ROAD DEPARTMENT				
FIELD ENGINEERING DIVISION		PROJECT NAME POINT DUME ROAD		
LIMITS NEWTON CYN TO RANCHO LINE				
DATE	BY	PROJECT NO.	SHEET 3 OF 3 SHTS.	
		13574	DWG. NO. RDM 42.05	
REVISIONS		SCALE HORIZ. 1" = 200'		

F.M. 21202-5

F.M. 21202-5