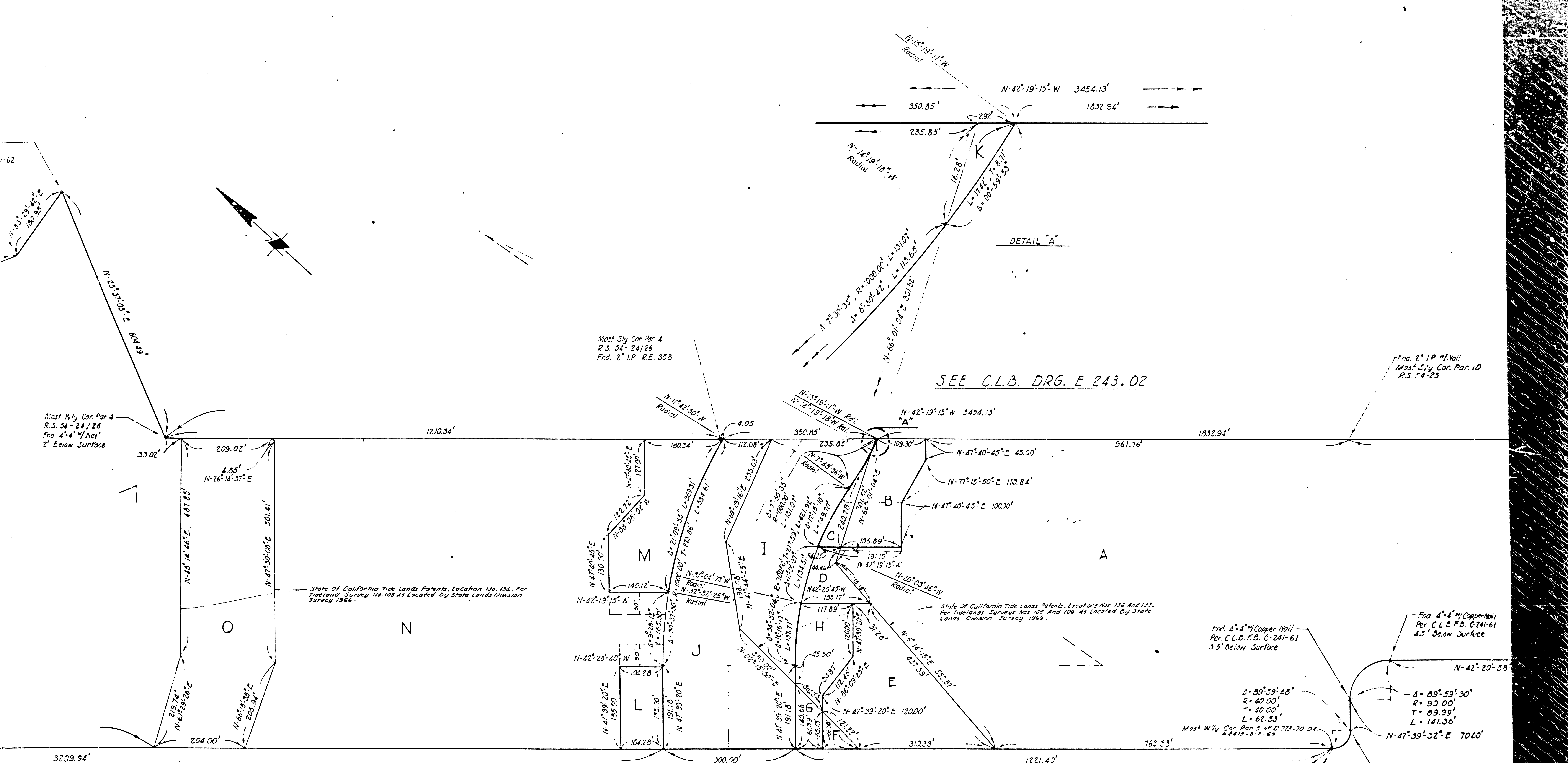


CITY OF LONG BEACH
 DRAWING No. C 3209
 Scale 1"=100'

I John T. Guthrie hereby certify that I am a Registered
 No. 8348 in the State of California, and the Mon-
 uments are of the Character and Occupy the Positions Shown.

Dec. 9, 1965
 Revised 7-16-66
 Revised 3-17-66
 Revised 5-1-67
 Revised 6-1-68

F.M. 21206-1
 A1 OF A3



**MC GRATH-MACCO BOUNDARY SETTLEMENT
AND EXCHANGE**
PART OF
THE ALAMITOS BAY AREA
CITY OF LONG BEACH, LOS ANGELES COUNTY, CALIFORNIA

CITY OF LONG BEACH
DRAWING No. C 3209
Scale 1"=100'

I John T. Guthrie Hereby Certify That I am A Registered Civil Engineer
No. 8348 in The State Of California, And The Monuments Indicated
Are Of The Character And Occupy The Positions Shown.

Dec. 9, 1965
Revised 2-16-66
Revised 3-17-66
Revised 5-1-67
Revised 6-1-68

John T. Guthrie
Registered Civil Engineer No. 8348

F.M.	21206-1
A2	OF A3

3209.94' N-42°20'40"-W 4731.34'
(N-42°27'28"-W California Coord System - Rotation 0°06'48")

Find. 4" x 4" Copper Nail
Per C.L.D.F.B. C-241-61
4.5' Below Surface

Find. 4" x 4" Copper Nail
Per C.L.B.F.E. C-241-61
3' Below Surface
California Coord. S-1-4, 024, 584.43
System Lane 7 (E-4, 252, 726.58)

Find. 4" x 4" Copper Nail
Per C.L.B.F.B. C-241-61
4.5' Below Surface

Find. 4" x 4" Copper Nail
Per C.L.B.F.B. C-241-61
4.5' Below Surface

Find. 4" x 4" Copper Nail
Per C.L.B.F.B. C-241-61
4.5' Below Surface

Find. 4" x 4" Copper Nail
Per C.L.B.F.B. C-241-61
4.5' Below Surface

SEE C.L.B. DRG. E 243.02

State Of California Tide Lands Patents, Location No. 136, Per
Tide Lands Survey No. 105 As Located By State Lands Division
Survey 1966.

State Of California Tide Lands Patents, Locations Nos. 136 And 137,
Per Tide Lands Surveys Nos. 105 And 106 As Located By State
Lands Division Survey 1966.

Most Wly. Cor. Par. 4
R.S. 54-24/25
Fnd. 4" x 4" Nail
2' Below Surface

Most Sly. Cor. Par. 4
R.S. 54-24/26
Fnd. 2" I.P. R.E. 358

Fnd. 2" I.P. Nail
Most Sly. Cor. Par. 4
R.S. 54-25

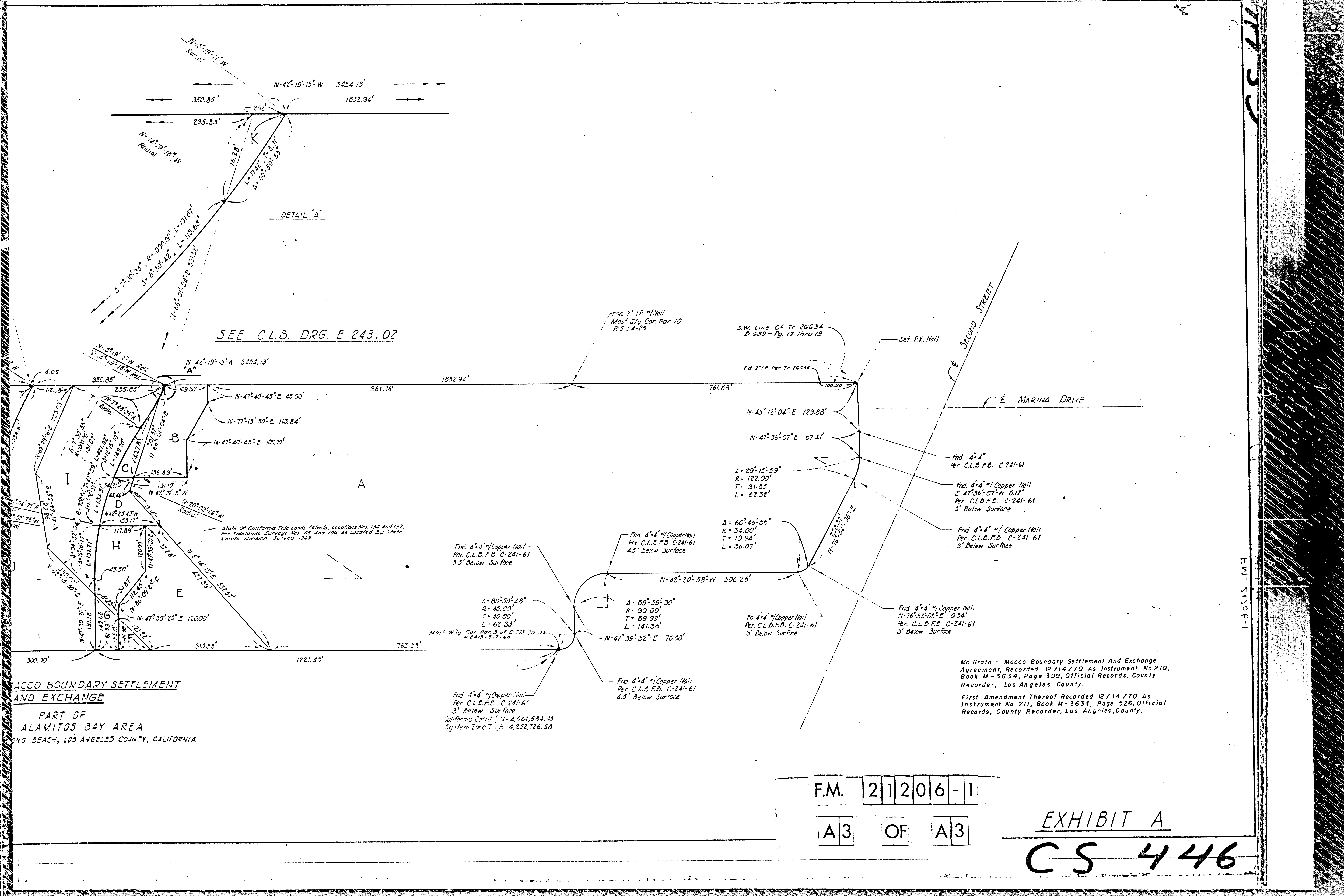
Find. 4" x 4" Copper Nail
Per C.L.D.F.B. C-241-61
5.5' Below Surface

Find. 4" x 4" Copper Nail
Per C.L.B.F.E. C-241-61
3' Below Surface
California Coord. S-1-4, 024, 584.43
System Lane 7 (E-4, 252, 726.58)

Find. 4" x 4" Copper Nail
Per C.L.B.F.B. C-241-61
4.5' Below Surface

Δ = 89°59'48"
R = 40.00'
T = 40.00'
L = 62.83'

Δ = 89°59'30"
R = 97.00'
T = 89.99'
L = 141.36'



SEE C.L.B. DRG. E 243.02

DETAIL 'A'

DETAIL 'B'

State of California Tide Lands Patents, Locations Nos. 136 and 137, Per Tidelands Surveys Nos. 05 and 106 As Located By State Lands Division Survey 1966

MACCO BOUNDARY SETTLEMENT AND EXCHANGE

PART OF ALAMITOS BAY AREA LONG BEACH, LOS ANGELES COUNTY, CALIFORNIA

Fnd. 4x4" Copper Nail Per. C.L.B.F.B. C-241-61 5.5' Below Surface

$\Delta = 89^{\circ}59'48''$
 $R = 40.00'$
 $T = 40.00'$
 $L = 62.83'$

Most Wly Cor. Par. 3 of D 772-70 et al. 2413-3-7-60

Fnd. 4x4" Copper Nail Per. C.L.B.F.B. C-241-61 3' Below Surface
 California Corrd. (1) 4,024,584.43 System Zone 7 (E) 4,252,726.58

Fnd. 2" IP "I" Nail Most Sly Cor. Par. 10 P.S. 24-25

S.W. Line of Tr. 26634 B 689 - Pg. 17 Thru 19

Fnd. 2" IP. Per Tr. 26634

Set P.K. Nail

Fnd. 4x4" Per. C.L.B.F.B. C-241-61

Fnd. 4x4" Copper Nail S-47-36-07-W 0.17' Per. C.L.B.F.B. C-241-61 3' Below Surface

Fnd. 4x4" Copper Nail Per. C.L.B.F.B. C-241-61 3' Below Surface

Fnd. 4x4" Copper Nail Per. C.L.B.F.B. C-241-61 4.5' Below Surface

$\Delta = 89^{\circ}59'30''$
 $R = 90.00'$
 $T = 89.99'$
 $L = 141.36'$

Fnd. 4x4" Copper Nail Per. C.L.B.F.B. C-241-61 4.5' Below Surface

Fnd. 4x4" Copper Nail Per. C.L.B.F.B. C-241-61 3' Below Surface

Fnd. 4x4" Copper Nail N-76-52-06-E 0.34' Per. C.L.B.F.B. C-241-61 3' Below Surface

Mc Grath - Macco Boundary Settlement And Exchange Agreement, Recorded 12/14/70 As Instrument No. 210, Book M - 3634, Page 399, Official Records, County Recorder, Los Angeles, County.

First Amendment Thereof Recorded 12/14/70 As Instrument No. 211, Book M - 3634, Page 526, Official Records, County Recorder, Los Angeles, County.

F.M. 21206-1

A3 OF A3

EXHIBIT A

CS 446

EW-51509-1