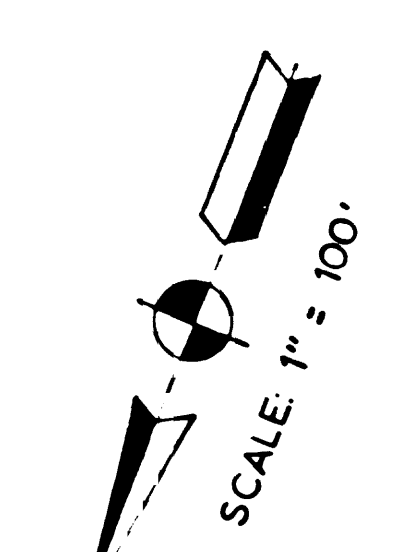
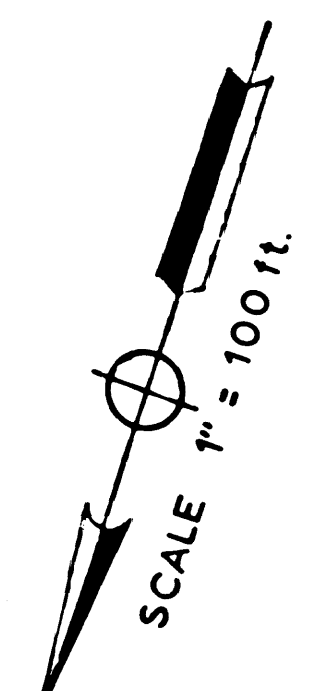


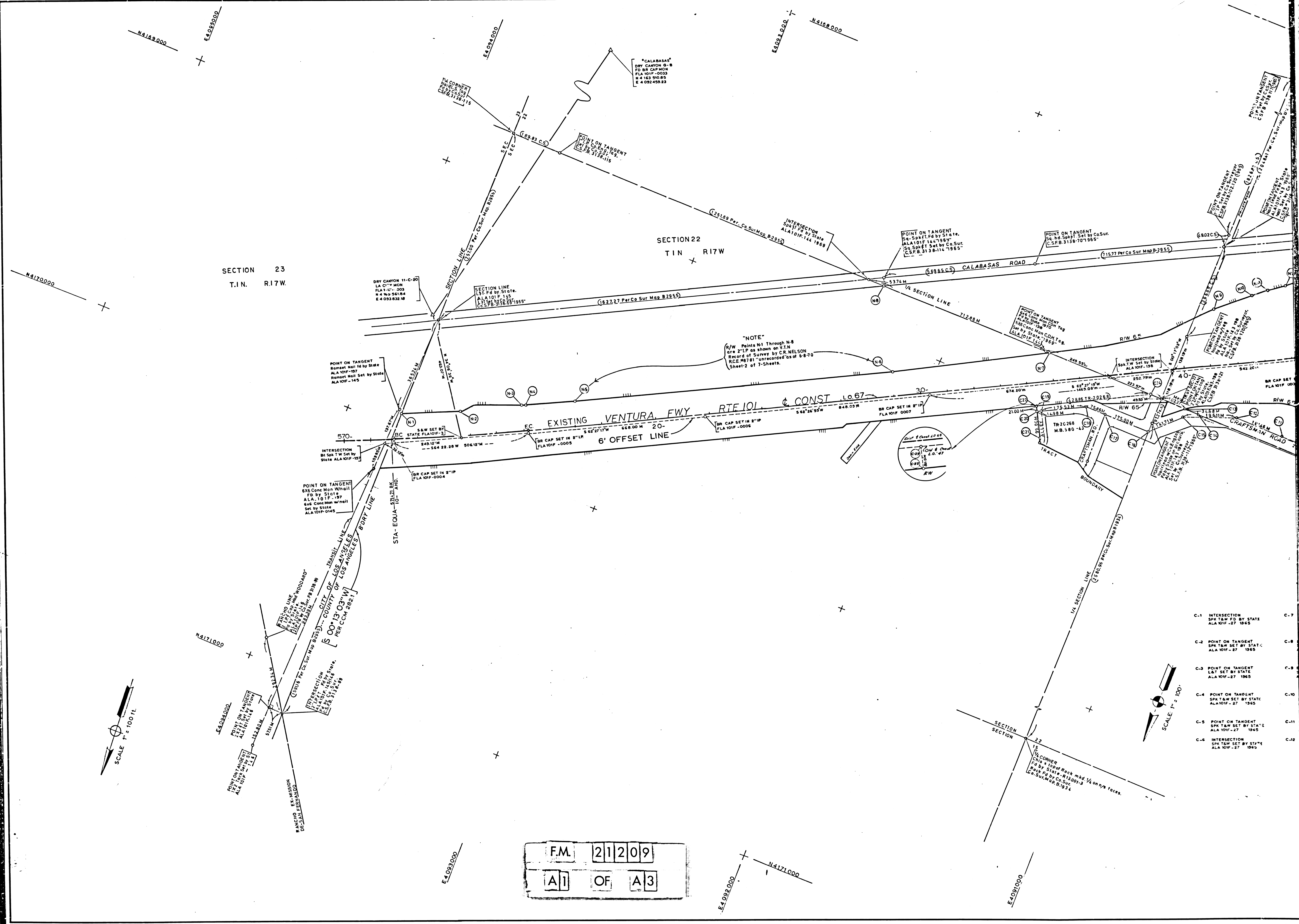
SECTION 23  
T.I.N. R.17W.

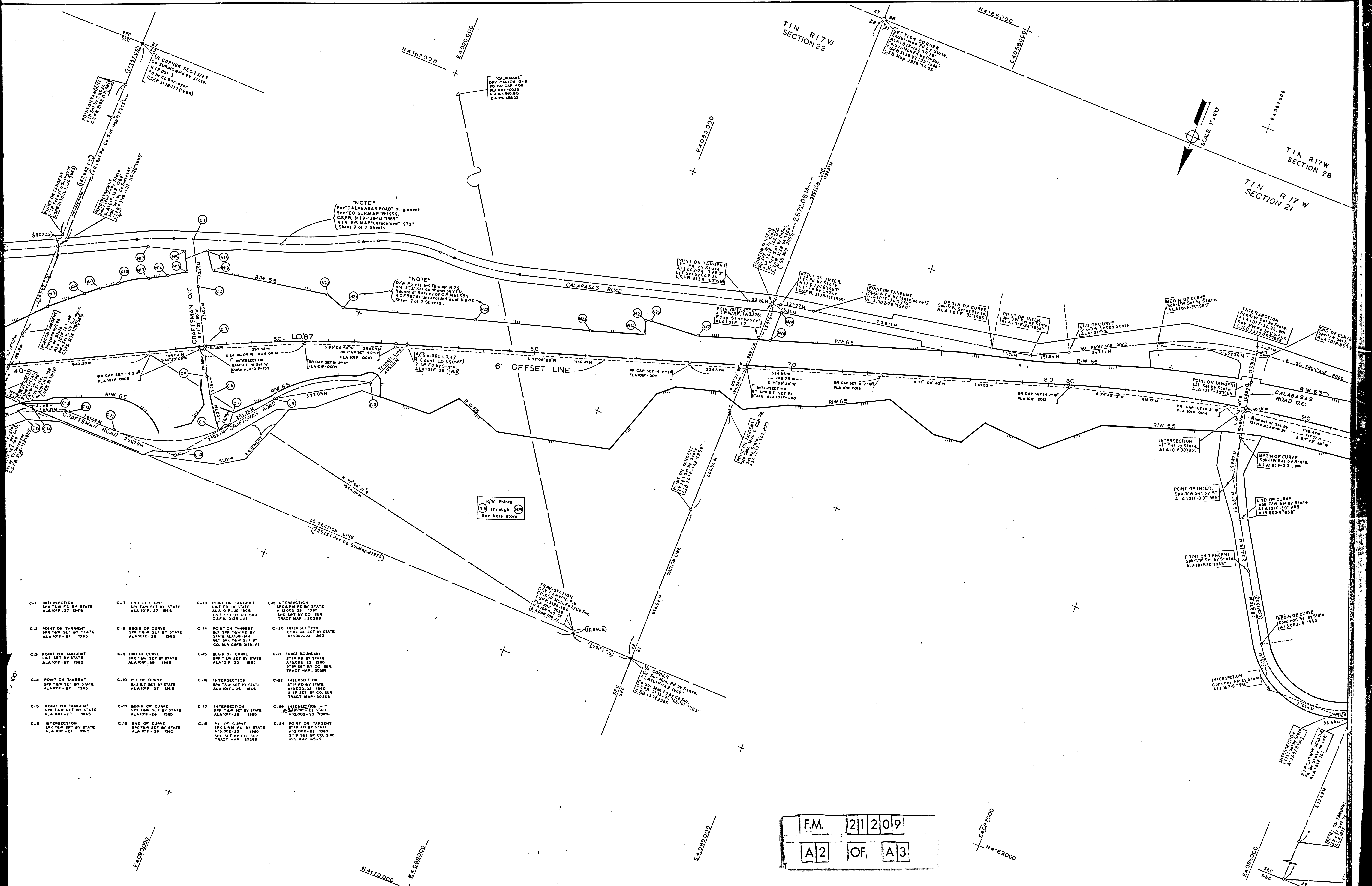
SECTION 22  
T.I.N. R.17W

F.M. 21209  
A1 OF A3



- C-1 INTERSECTION SPK T&W SET BY STATE ALA 101F-27 1965
- C-2 POINT ON TANGENT SPK T&W SET BY STATE ALA 101F-27 1965
- C-3 POINT ON TANGENT L&T SET BY STATE ALA 101F-27 1965
- C-4 POINT ON TANGENT SPK T&W SET BY STATE ALA 101F-27 1965
- C-5 POINT ON TANGENT SPK T&W SET BY STATE ALA 101F-27 1965
- C-6 INTERSECTION SPK T&W SET BY STATE ALA 101F-27 1965
- C-7
- C-8
- C-9
- C-10
- C-11
- C-12





"NOTE"  
For "CALABASAS ROAD" alignment,  
See "CO. SUR. MAP" B2955,  
C.S.F.B. 3138-136-141-1965,  
V.T.N. R/S MAP "unrecorded" 1970-  
Sheet 7 of 7 Sheets.

"NOTE"  
R/W Points N-9 through N-29  
are 2" P. Set as shown on V.T.N.  
R/S MAP "unrecorded" as of 6-8-70  
Sheet 7 of 7 Sheets.

R/W Points  
N-9 through N-29  
See Note above.

- C-1 INTERSECTION  
SPK T&W SET BY STATE  
ALA 101F-27 1965
- C-2 POINT ON TANGENT  
SPK T&W SET BY STATE  
ALA 101F-27 1965
- C-3 POINT ON TANGENT  
L&T SET BY STATE  
ALA 101F-27 1965
- C-4 POINT ON TANGENT  
SPK T&W SET BY STATE  
ALA 101F-27 1965
- C-5 POINT ON TANGENT  
SPK T&W SET BY STATE  
ALA 101F-27 1965
- C-6 INTERSECTION  
SPK T&W SET BY STATE  
ALA 101F-27 1965
- C-7 END OF CURVE  
SPK T&W SET BY STATE  
ALA 101F-27 1965
- C-8 BEGIN OF CURVE  
SPK T&W SET BY STATE  
ALA 101F-28 1965
- C-9 END OF CURVE  
SPK T&W SET BY STATE  
ALA 101F-28 1965
- C-10 P.I. OF CURVE  
SPK T&W SET BY STATE  
ALA 101F-27 1965
- C-11 BEGIN OF CURVE  
SPK T&W SET BY STATE  
ALA 101F-28 1965
- C-12 END OF CURVE  
SPK T&W SET BY STATE  
ALA 101F-28 1965
- C-13 POINT ON TANGENT  
L&T FD BY STATE  
ALA 101F-28 1965  
L&T SET BY CO. SUR.  
C.S.F.B. 3138-111
- C-14 POINT ON TANGENT  
BUT SPK T&W SET BY  
STATE ALA 101F-144  
BUT SPK T&W SET BY  
CO. SUR. C.S.F.B. 3138-111
- C-15 BEGIN OF CURVE  
SPK T&W SET BY STATE  
ALA 101F-25 1965
- C-16 INTERSECTION  
SPK T&W SET BY STATE  
ALA 101F-25 1965
- C-17 INTERSECTION  
SPK T&W SET BY STATE  
ALA 101F-25 1965
- C-18 P.I. OF CURVE  
SPK & P.M. FD BY STATE  
A13-002-23 1960  
SPK SET BY CO. SUR.  
TRACT MAP - 20268
- C-19 INTERSECTION  
L&T FD BY STATE  
A13-002-23 1960  
SPK & P.M. FD BY STATE  
A13-002-23 1960  
2" IP SET BY CO. SUR.  
TRACT MAP - 20268
- C-20 INTERSECTION  
CONC. HL SET BY STATE  
A13-002-23 1960
- C-21 TRACT BOUNDARY  
2" IP FD BY STATE  
A13-002-23 1960  
2" IP SET BY CO. SUR.  
TRACT MAP - 20268
- C-22 INTERSECTION  
2" IP FD BY STATE  
A13-002-23 1960  
2" IP SET BY CO. SUR.  
TRACT MAP - 20268
- C-23 INTERSECTION  
DEAD END SET BY STATE  
A13-002-23 1960
- C-24 POINT ON TANGENT  
2" IP FD BY STATE  
A13-002-23 1960  
2" IP SET BY CO. SUR.  
R/S MAP 65-5

F.M. 21209  
A2 OF A3

DISTRICT	COUNTY	ROUTE	POST MILES-TOTAL PROJECT	SHEET NO.	TOTAL SHEETS
07	LA	101	27.3 - 31.4	1	2
STATE OF CALIFORNIA DIVISION OF HIGHWAYS					
SURVEYS					
MONUMENTATION MAP					
DATUM-CALIFORNIA COORDINATE SYSTEM ZONE 2					
MAP NO. ME-4029-1					
GEORGE WOFFORD C.E. 6961 Deputy District Engineer					
Surveyed 6-9-07 Reviewed by L. DAVIS E. MOORE Date MAR 18 1908					

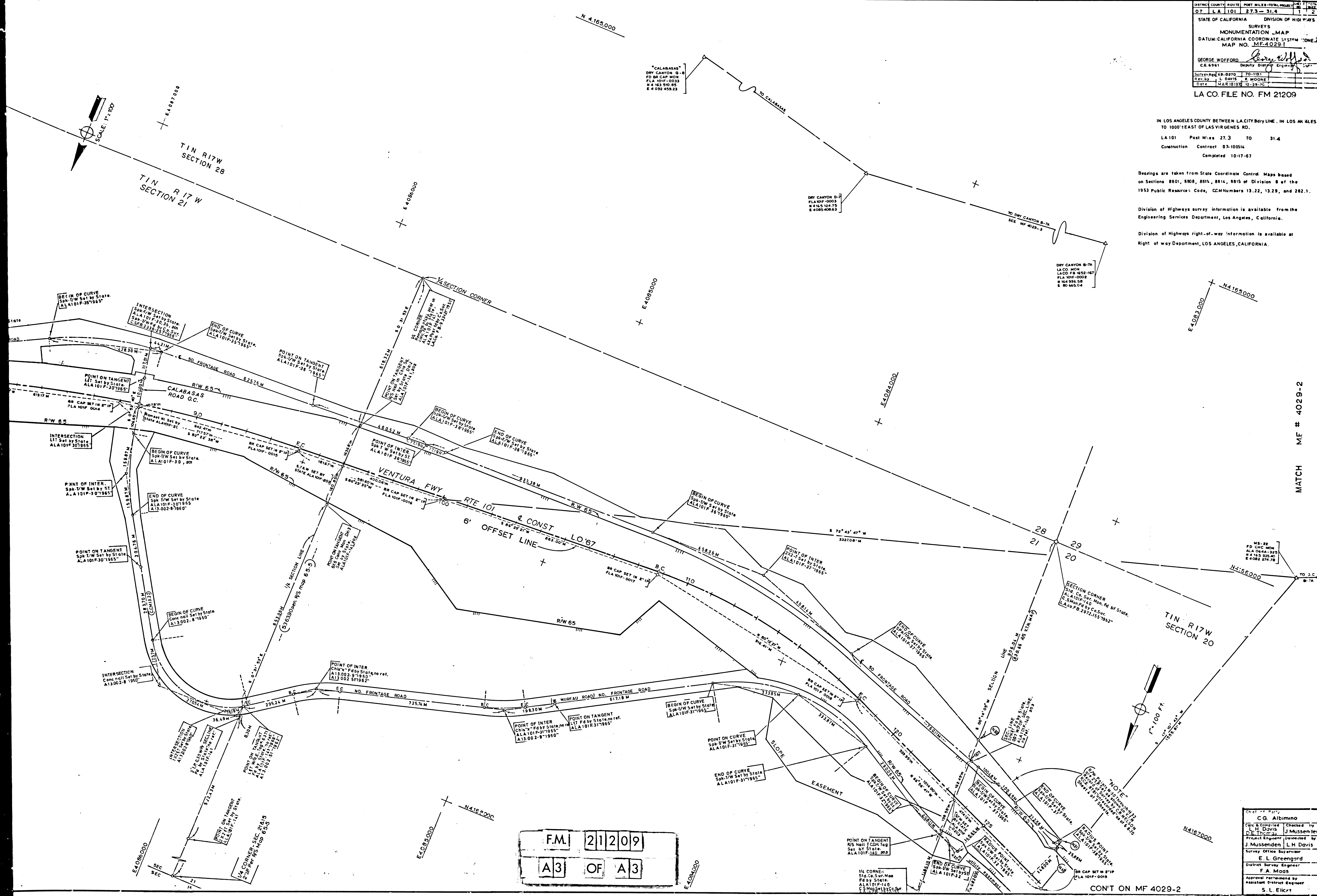
LA CO. FILE NO. FM 21209

IN LOS ANGELES COUNTY BETWEEN L.A. CITY BDRY LINE, IN LOS ANGELES TO 1000' EAST OF LAS VIRGENES RD.  
LA 101 Post Miles 27.3 TO 31.4  
Construction Contract 67-100514  
Completed 10-17-67

Bearings are taken from State Coordinate Control Maps based on Sections 8801, 8808, 8811, 8814, 8815 of Division 8 of the 1953 Public Resource Code, CCM Numbers 13.22, 13.29, and 282.1.

Division of Highways survey information is available from the Engineering Services Department, Los Angeles, California.

Division of Highways right-of-way information is available at Right of way Department, LOS ANGELES, CALIFORNIA.



F.M. 21209  
A3 OF A3

Chief of Party	
CG Albirino	Checked by
Eric D. Davis	J. Mussenden
Project Engineer	Checked by
J. Mussenden	L.H. Davis
Survey Office Supervisor	Checked by
E.L. Greengard	F.A. Maas
District Survey Engineer	Checked by
S.L. Eicr	

CONT ON MF 4029-2