



Sheet No.	2	Total	2
Post Miles - Total Proj.	27.3 - 31.4		
STATE OF CALIFORNIA DIVISION OF HIGHWAYS			
SURVEYS			
MONUMENTATION - MAP			
DATUM: CALIFORNIA COORDINATE SYSTEM ZONE 2			
MAP NO. MF 4029-2			
Surveyed	95-09-70	70-01-71	
Rev. by	T. DAVIS	K. WOODR	
Date	MAR 18 70	12-23-70	
LA CO. FILE NO. FM 21210			

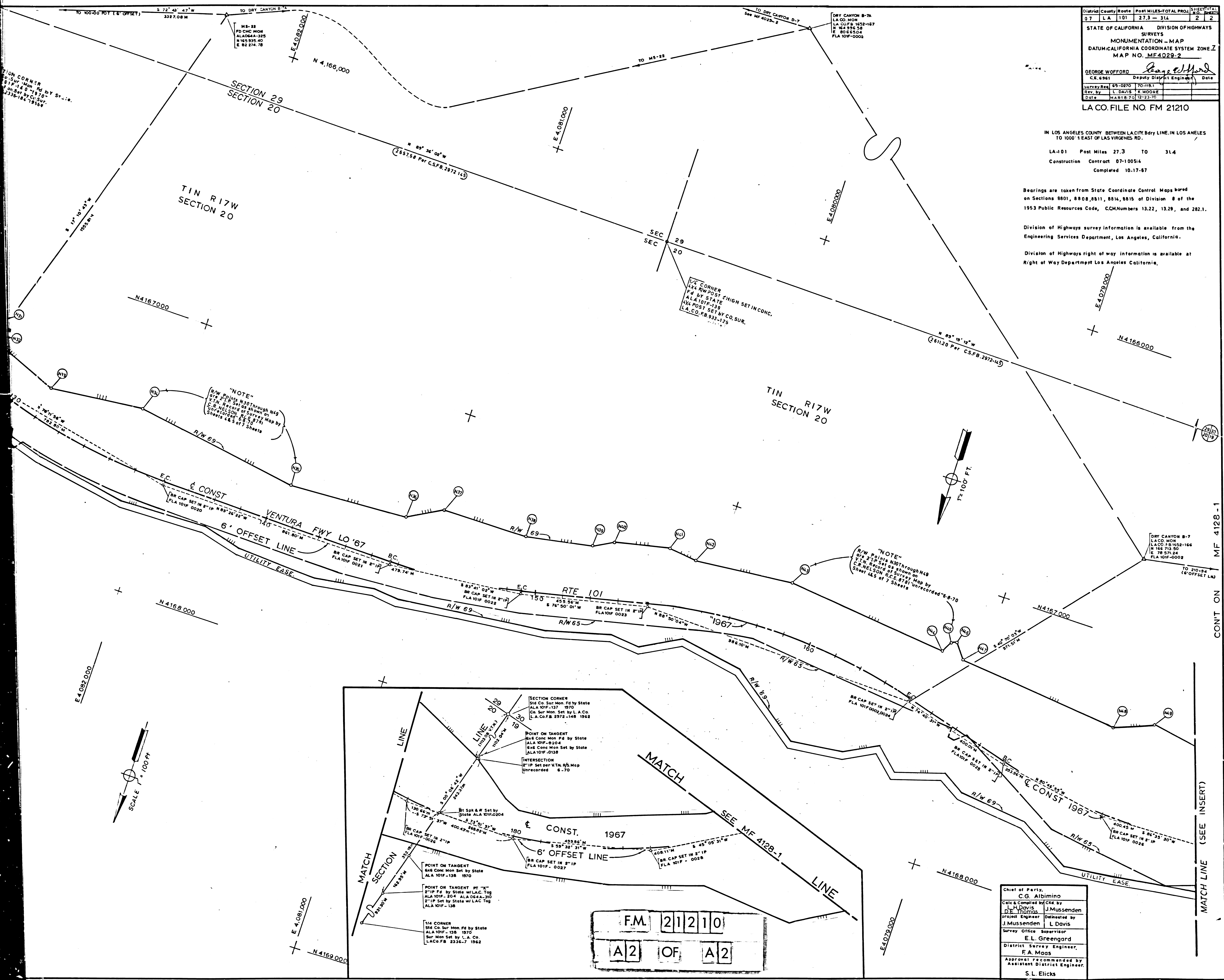
IN LOS ANGELES COUNTY BETWEEN LA CITY BDRY LINE IN LOS ANGELES TO 1000' EAST OF LAS VIRGENES RD.

LA-101 Post Miles 27.3 TO 31.4  
Construction Contract 07-100514  
Completed 10-17-67

Bearings are taken from State Coordinate Control Maps based on Sections 8801, 8808, 8811, 8814, 8815 of Division 8 of the 1953 Public Resources Code, CCM Numbers 13.22, 13.28, and 282.1.

Division of Highways survey information is available from the Engineering Services Department, Los Angeles, California.

Division of Highways right of way information is available at Right of Way Department Los Angeles California.



FM 21210  
A2 OF A2

Chief of Party,  
C.G. Albimino  
Calc & Comps by C.G. by  
J. Davis  
J. Thomas  
J. Mussenden  
J. Mussenden L. Davis  
Survey Office Supervisor  
E.L. Greengard  
District Survey Engineer,  
F.A. Maas  
Approval Recommended by  
Assistant District Engineer,  
S.L. Elicks

CONT'N ON MF 4128-1

MATCH LINE (SEE INSERT)