

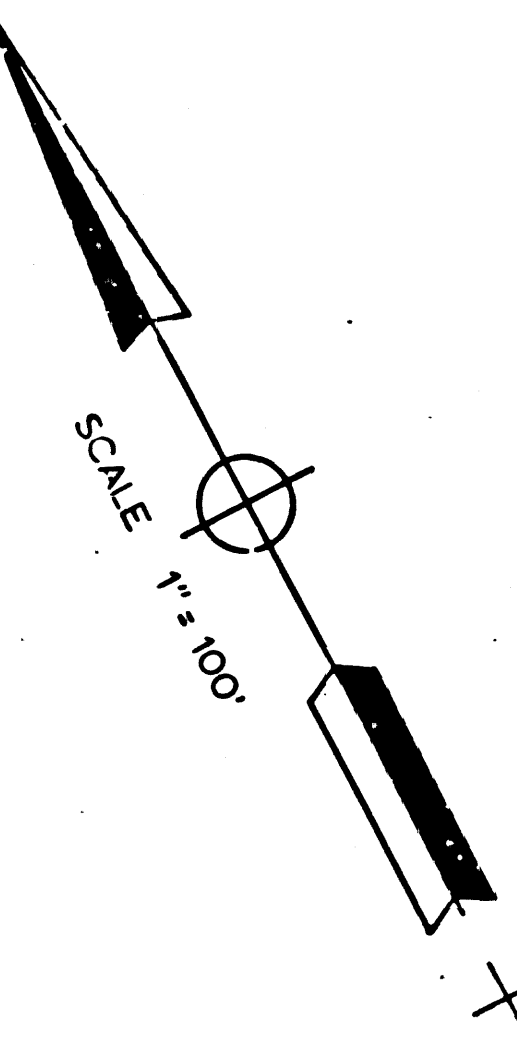
IN LOS ANGELES COUNTY BETWEEN LANKERSHIM BLVD.
TO OAKLEY DRIVE IN LOS ANGELES

LA-101 POST MILES 9.3 TO 10.6
CONSTRUCTION CONTRACT 07-165504
COMPLETED 5-28-70

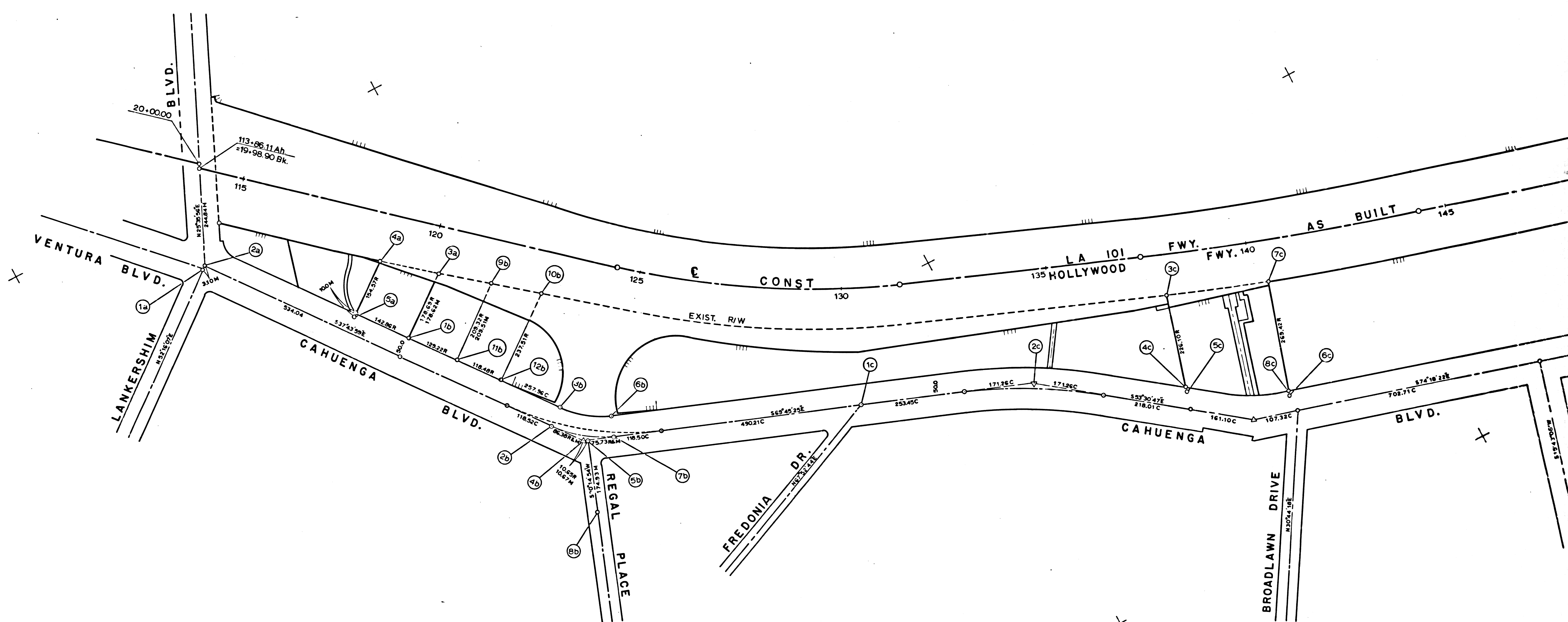
Bearings are taken from State Coordinate Control Maps based on Sections 8801, 8808, 8811, 8814, 8815 of Division 8 of the 1953 Public Resources Code. CCM Numbers: 13.37

Division of Highways survey information is available from the Engineering Services Department, Los Angeles, California.

Division of Highways right-of-way information is available at Right of Way Department, Los Angeles, California.



- (1a) POINT ON TANGENT
Spk & T fd by State
ALAI01C-0010 (5/69)
Spk & T set by L.A. City
FB 18205-38 (1951)
- (2a) INTERSECTION
Spk & T fd by State
ALAI01C-0010 (5/69)
Spk in lead fd; by RCE 13095
Tr. No. 29625 (5/66)
Spk & T set by L.A. City
FB 18205-38 (1951)
- (3a) PROPERTY CORNER
2" IP tagged RCE 13095
Fd by State ALAI01C-0009 (5/69)
2" IP set by RCE 13095
Tr. No. 29625 (5/66)
- (4a) PROPERTY CORNER
1 1/2" IP tagged LS 2698
Fd by State ALAI01C-009 (5/69)
- (5a) OFFSET PT
LS Tag 2602 in top of curb, Fd by State
No record
ALAI01C-0009 (5/69)
- (1b) PROPERTY CORNER
2" IP tagged RCE 13095 Fd
by State ALAI01C-0009 (5/69)
2" IP set by RCE 13095
Tr. No. 29625 (5/66)
- (2b) POINT OF CURVATURE
Search made, nothing
Fd by State
ALA 101C-0010 (5/69)
- (3b) PROPERTY CORNER
Search made for
1-1/2" IP & RCE tag #13095
Nothing Fd by State
ALAI01C-0010 (5/69)
1 1/2" IP fd & tagged by
RCE #13095
TR #29625
- (4b) POINT OF INTERSECTION
Search made for
STD Trav Mon
Nothing Fd by State
Replaced Mon with LET
using CFB 10670-170 notes
ALAI01C-0010
STD trav Mon set
under cover by City
F.B. 10670-170 (8-50)
- (5b) INTERSECTION
Search made for LET
Nothing Fd by State
LET Replaced by State
ALAI01C-0010 (5/69)
LET Rent by City
18205-60 (8-51)
- (6b) PROPERTY CORNER
Search made for 2" IP & RCE
Tag 13095. Nothing Fd by State
ALAI01C-0010 (5/69)
2" IP set by RCE 13095
TR. No. 29625 (5/66)
- (7b) POINT OF CURVATURE
Search made, nothing Fd by State
ALAI01C-0010 (5/69)
- (8b) INTERSECTION
Spk fd by State
ALAI01C-0010 (5/69)
2x2 set by City
13208-16 (1952)
- (9b) PROPERTY CORNER
2" IP & RCE Tag 13095
Fd by State, ALAI01C-0009 (5/69)
- (10b) PROPERTY CORNER
Search made, Nothing Fd by
State ALAI01C-0009 (5/69)
- (12b) PROPERTY CORNER
Search made, Nothing Fd by
State ALAI01C-0009 (5/69)
- (1c) INTERSECTION
LET fd by State
ALAI01C-0010 (5/69)
LET Replaced by City
FB 18205-59 (1951)
- (2c) POINT OF INTERSECTION
Std Trav Mon 12-0-25
Fd by State ALAI01C-0010 (5/69)
Std Trav Mon 12-0-25
Set by City, FB 10670-171 (9/50)
- (3c) PROPERTY CORNER
2" IP RCE Tag 13095 Fd
by State ALAI01C-0011 (5/69)
2" IP set by RCE 13095
Tr. No. 29625 (5/66)
- (4c) PROPERTY CORNER
Search made, nothing
Fd by State
ALAI01C-0011 (5/69)
1-1/2" IP fd & tagged by RCE 13095
TR No 29625 (5/69)
- (5c) TOP OF CURB
RCE Tag 13095 Fd by State
ALAI01C-0011 (5/69)
- (6c) TOP OF CURB
RCE Tag 13095 Fd by State
ALAI01C-0011 (5/69)
- (7c) PROPERTY CORNER
2" IP & RCE Tag 13095
Fd by State ALAI01C-0011
(5/69)
- (8c) PROPERTY CORNER
Search made,
Nothing Fd by State
ALAI01C-0011 (5/69)
1-1/2" IP & Tag fd by RCE
13095 P.M. No 763 (1967)
- (11b) PROPERTY CORNER
RCE Tag 13095 Fd by State
ALAI01C-0009 (5/69)



F.M. 21212
A1 OF A2

DISTRICT	COUNTY	ROUTE	POST MILES-TOTAL PROJECT	SHEET NO.	TOTAL SHEETS
07	LA	101	9.3 - 10.6	1	1
STATE OF CALIFORNIA TRANSPORTATION AGENCY DEPARTMENT OF PUBLIC WORKS DIVISION OF HIGHWAYS MONUMENTATION MAP NO. MF-4117-1					
			T. R. Lammers	C.E. 9264 Dale	
			Deputy District Engineer		

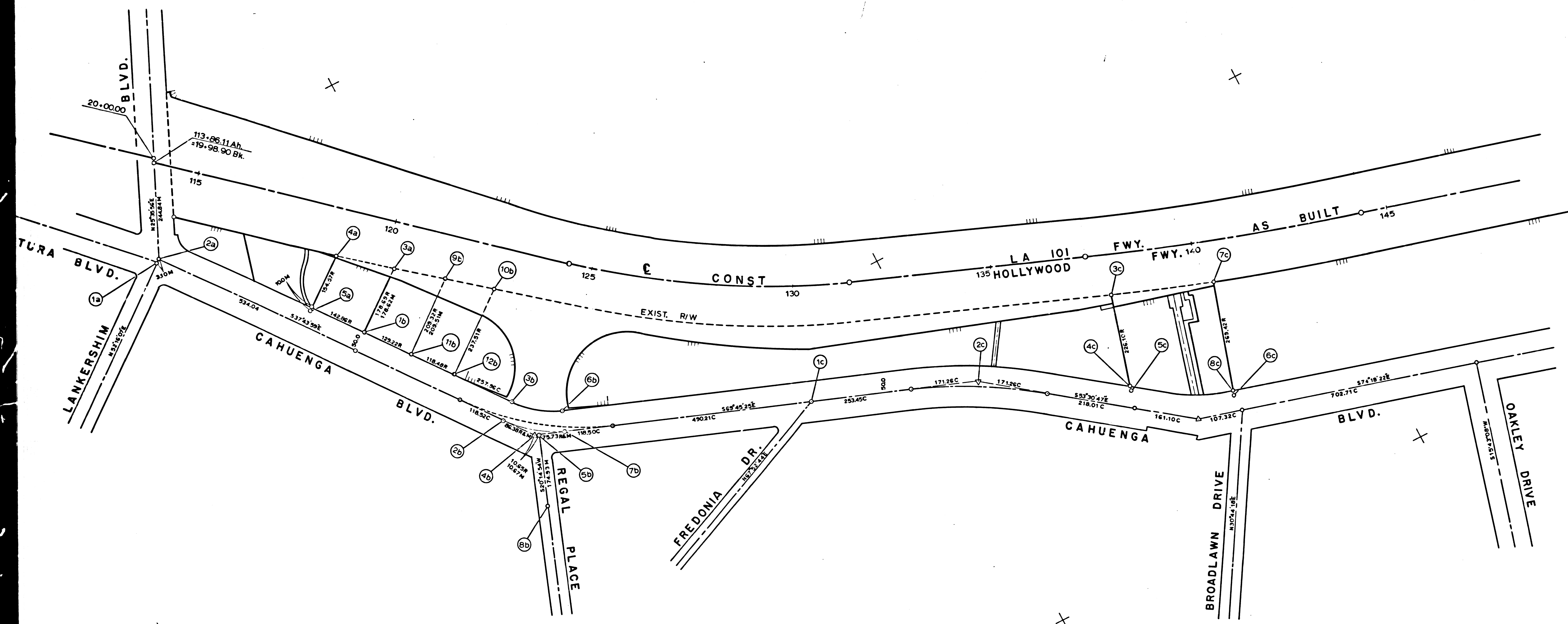
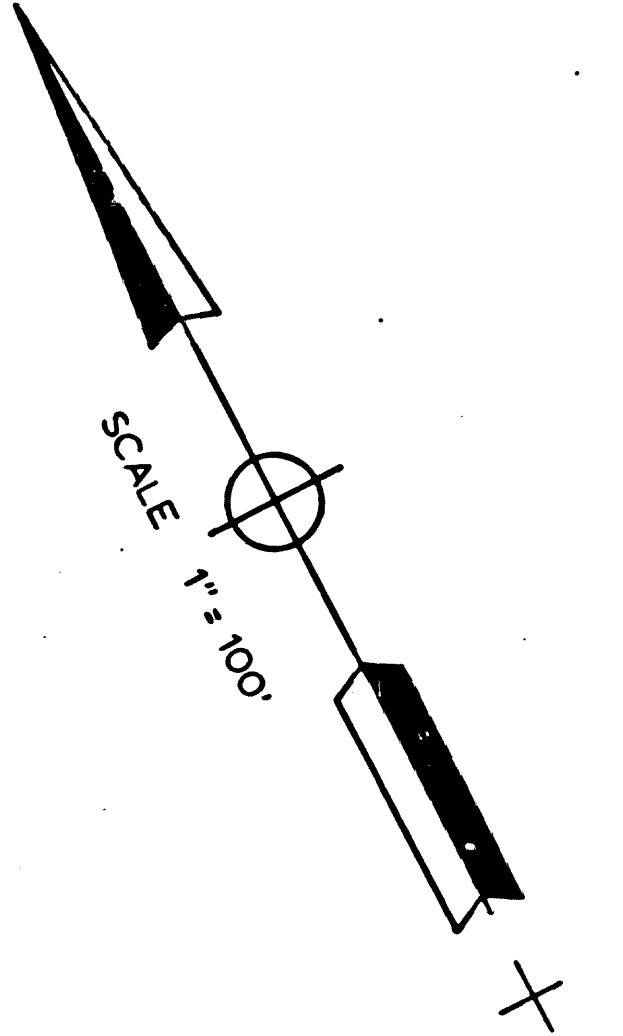
**IN LOS ANGELES COUNTY BETWEEN LANKERSHIM BLVD.
TO OAKLEY DRIVE IN LOS ANGELES**

LA-101 POST MILES 9.3 TO 10.6
CONSTRUCTION CONTRACT 07-165504
COMPLETED 5-28-70

Bearings are taken from State Coordinate Control Maps based on Sections 8801, 8808, 8811, 8814, 8815 of Division 8 of the 1953 Public Resources Code. CCM Numbers: 13.37

Division of Highways survey information is available from the Engineering Services Department, Los Angeles, California.

Division of Highways right-of-way information is available at Right of Way Department, Los Angeles, California.



FM 21212
A2 OF A2

Chief of Party	DATE
PAUL NELSON	4/69
Sr. Designer	Drawn by
G. SULAITIS	12/70
Map Supervisor	Checked by
P. CHRETIEN	G. SULAITIS
Project Engineer	12/70
E. L. GREENGARD	12/70
District Survey Engineer	12/70
F. A. MASS	12/70
Approval recommended by	
Assistant District Engineer	
S. L. ELICKS	12/70