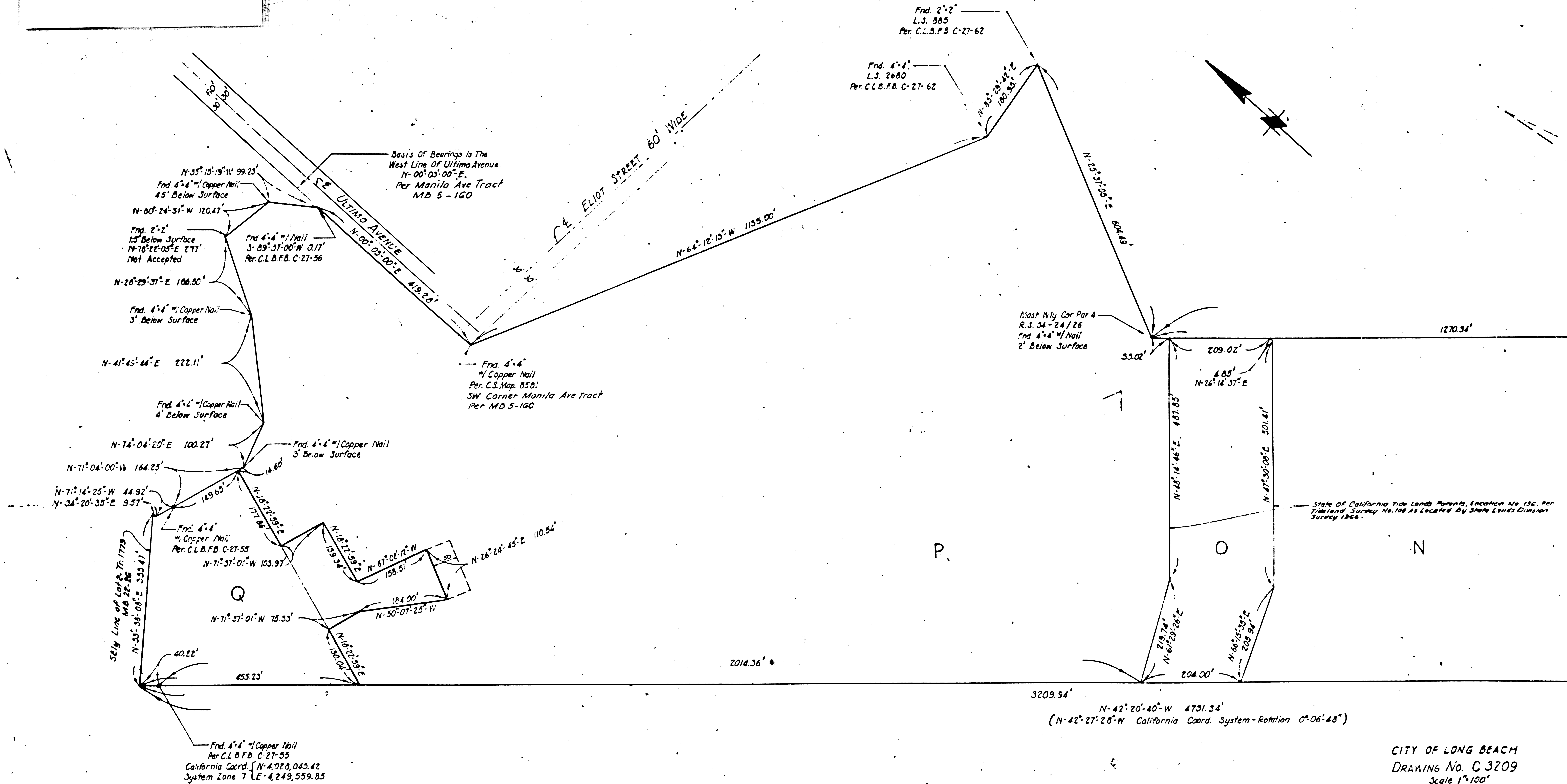


NOTE:

SEE F.M. 21206  
SHTS. 1,2,3



CITY OF LONG BEACH  
DRAWING No. C 3209  
Scale 1"=100'

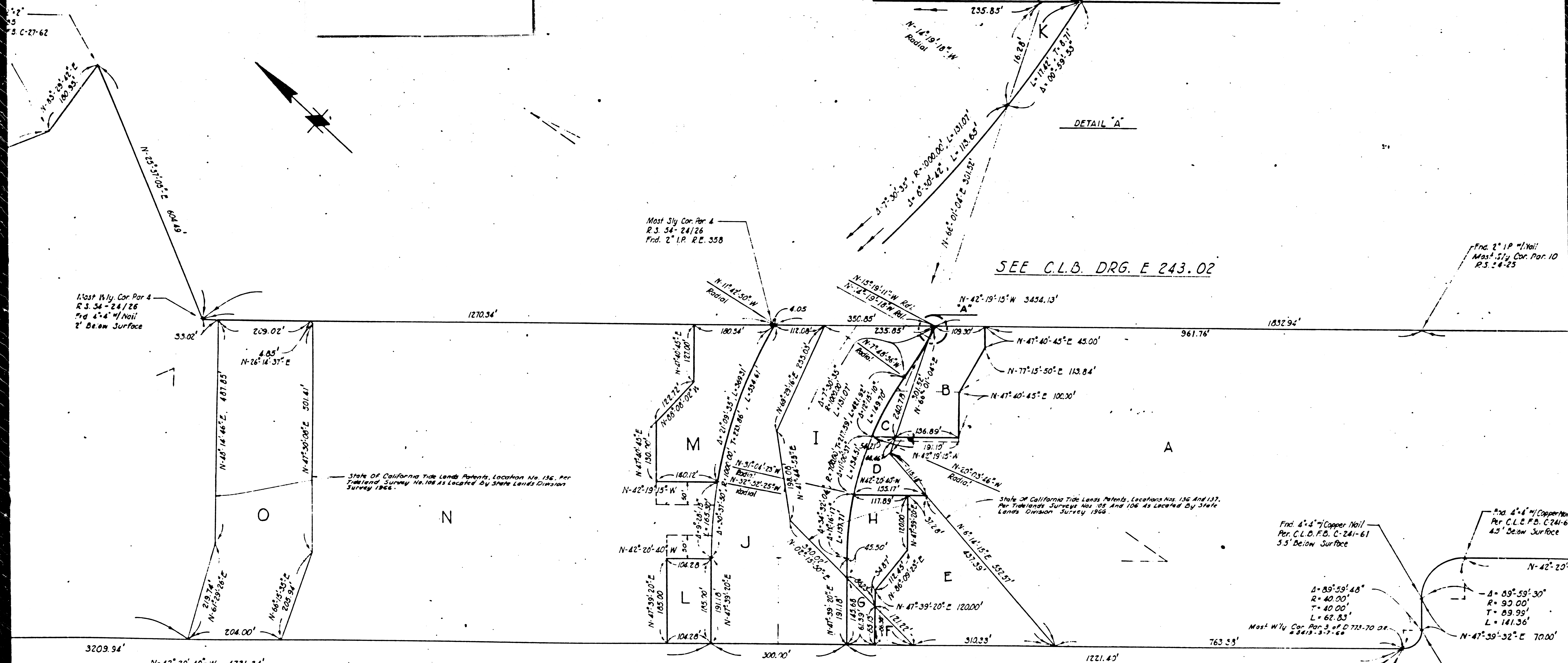
I John T. Guthrie hereby certify that I am a Registered Civil Engineer No. 8348 in the State of California, and the monuments are of the character and occupy the positions shown.

Dec. 9, 1965  
Revised 2-16-66  
Revised 3-17-66  
Revised 5-1-67  
Revised 6-1-68

John T. Guthrie  
Registered Civil Engineer

F.M. 21217-2  
A1 OF A3

NOTE:  
SEE F.M. 21206  
SHTS. 1,2,3



3209.94' N-42°-20'-40"-W 4731.34'  
(N-42°-27'-28"-W California Coord. System - Rotation 0°-06'-48")

CITY OF LONG BEACH  
DRAWING No. C 3209  
Scale 1"=100'

I John T. Guthrie hereby certify that I am a Registered Civil Engineer No. 8348 in the State of California, and the monuments indicated are of the character and occupy the positions shown.

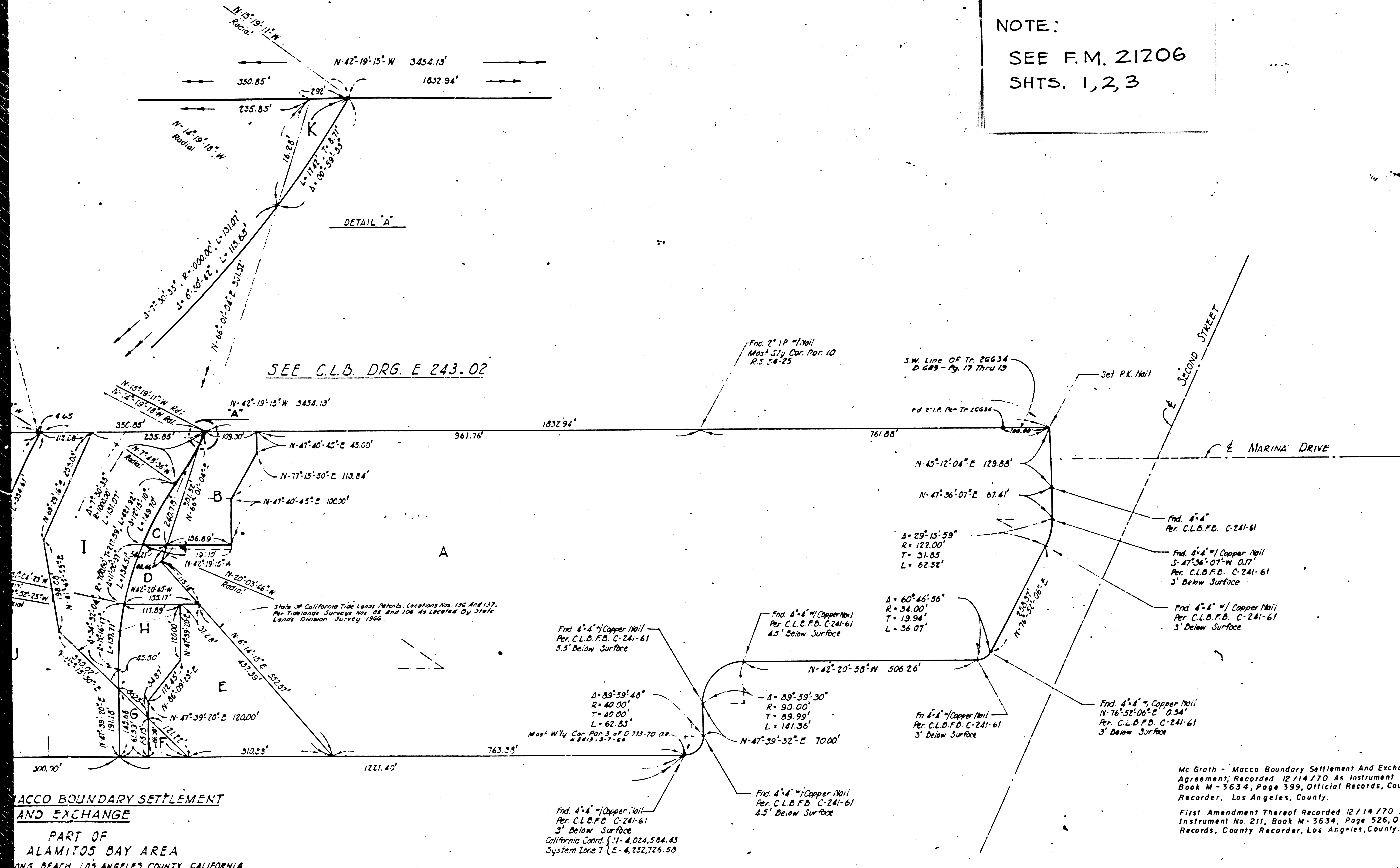
Dec. 9, 1965  
Revised 2-16-66  
Revised 3-17-66  
Revised 5-1-67  
Revised 6-1-68

*John T. Guthrie*  
Registered Civil Engineer No. 8348

**MC GRATH-MACCO BOUNDARY SETTLEMENT  
AND EXCHANGE**  
PART OF  
THE ALAMITOS BAY AREA  
CITY OF LONG BEACH, LOS ANGELES COUNTY, CALIFORNIA

F.M. 21217-2  
A2 OF A3

NOTE:  
SEE F.M. 21206  
SHTS. 1,2,3



MACCO BOUNDARY SETTLEMENT  
AND EXCHANGE  
PART OF  
ALAMITOS BAY AREA  
LONG BEACH, LOS ANGELES COUNTY, CALIFORNIA

Mc Grath - Macco Boundary Settlement And Exchange  
Agreement, Recorded 12/14/70 As Instrument No.210,  
Book M-3634, Page 399, Official Records, County  
Recorder, Los Angeles, County.  
First Amendment Thereof Recorded 12/14/70 As  
Instrument No.211, Book M-3634, Page 526, Official  
Records, County Recorder, Los Angeles, County.

F.M. 21217-2  
A3 OF A3

EXHIBIT A