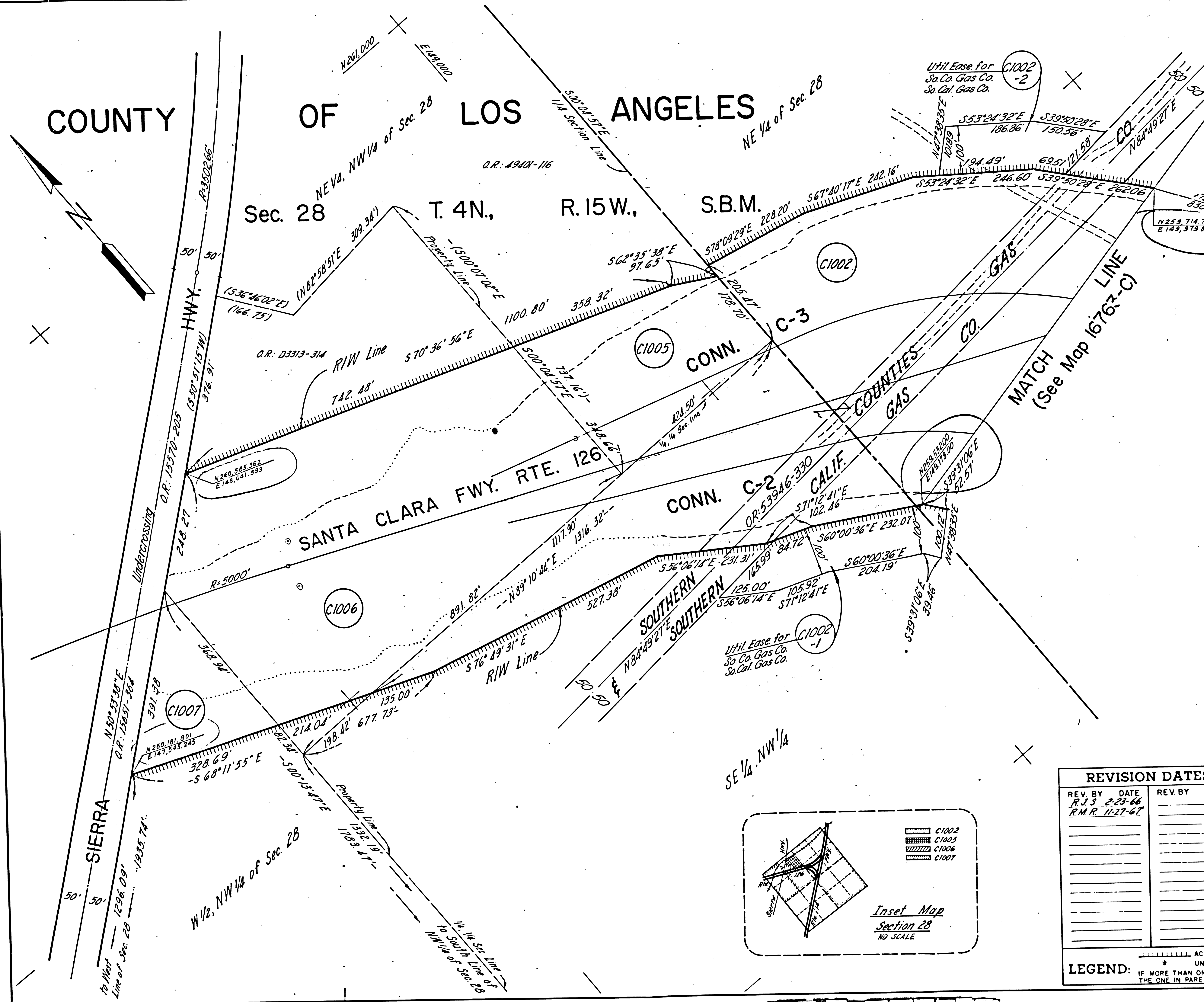


COUNTY OF LOS ANGELES

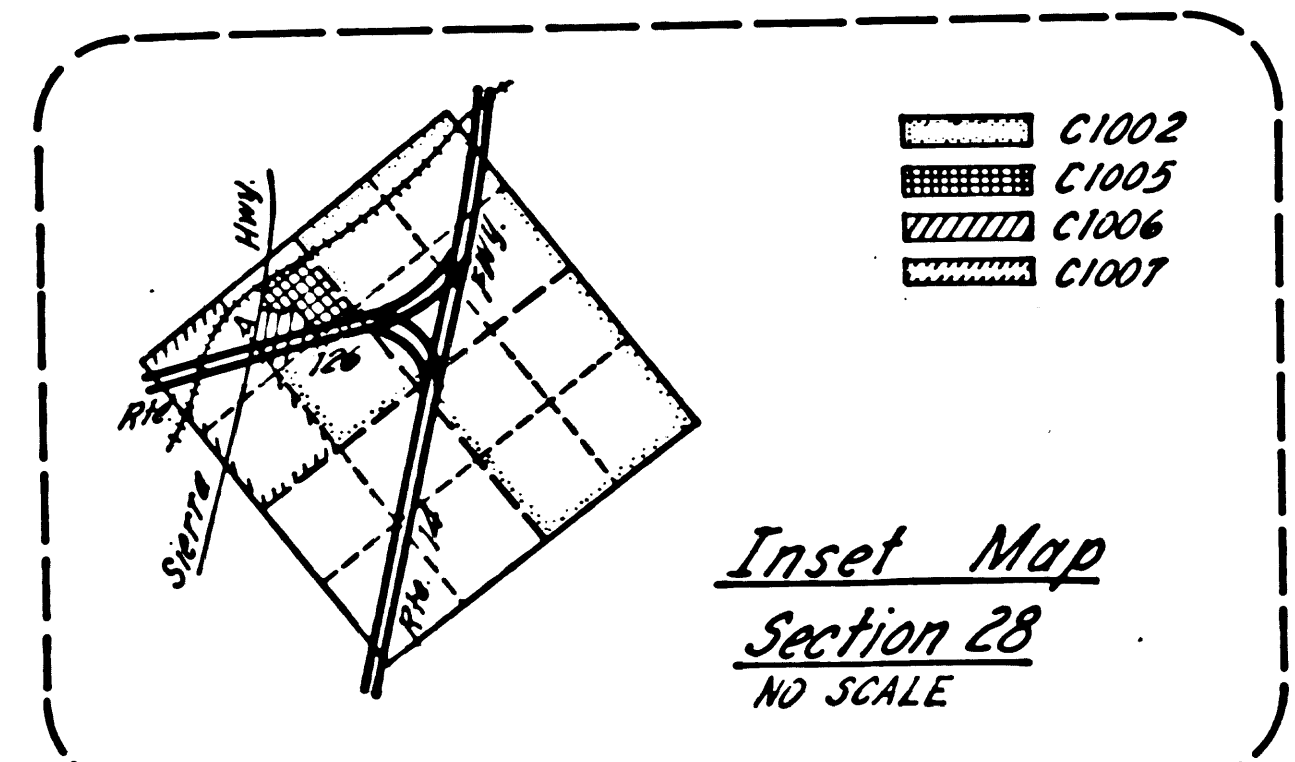
Sec. 28 T. 4N., R. 15W., S.B.M.



F.P.A. REG. NO.	STATE	FEDERAL PROJECT NO.	EFFECTIVE DATE	SHEET NO.	TOTAL SHEETS
7	CALIF.				

DISTRICT R/W AGENT BUREAU OF PUBLIC ROADS DATE

PARCEL NO.	GRANTOR OR GRANTEE	AREA TO BE ACQUIRED	EXCESS TOTAL	INST.	RECORDING DATA	
					DATE	O.R.
C1002	F.J. Turk et al.	6228 Ac.	360.5 Ac.			
C1002-1	F.J. Turk et al. In. So. Cal. Gas Co. 1/4 Sec. 28	0.975 Ac.				
C1002-2	"	0.690 Ac.				
C1005	Dell Monte Plastics Corp.	2.625 Ac.	15.19 Ac.	Fee	7-1-68	D4050-422
C1006	Robert L. Wademan et al.	9.997 Ac.	14.03 Ac.	Fee	9-20-67	D3772-847
C1007	Newhall Land Farming Co.	1.290 Ac.	35.76 Ac.	Fee	3-20-67	D3587-925



REVISION DATES	
REV. BY	DATE
R.J.S.	2-23-66
R.M.R.	11-27-67

STATE OF CALIFORNIA
 TRANSPORTATION AGENCY DEPARTMENT OF PUBLIC WORKS
 DIVISION OF HIGHWAYS
OT-LA-14-R30.2
APPRAISAL MAP
 Rte. 14/126 Fwy. Interchange
 SCALE 1"=100'
 DRAFT L.J.
 RWPE H.H. Hopkins
 FILE NO. 16762-C
 DATE 12-9-65
 APPROVED Weatherholt

LEGEND:
 ACCESS DENIAL LINE TOP OF CUT TOE OF FILL
 * UNLESS OTHERWISE NOTED ALL AREAS ARE IN SQUARE FEET
 IF MORE THAN ONE BEARING AND DISTANCE ARE SHOWN FOR A LINE, THE ONE IN PARENTHESES IS PREVIOUS RECORD

F.M. 21222-1

F.M. 21222-1