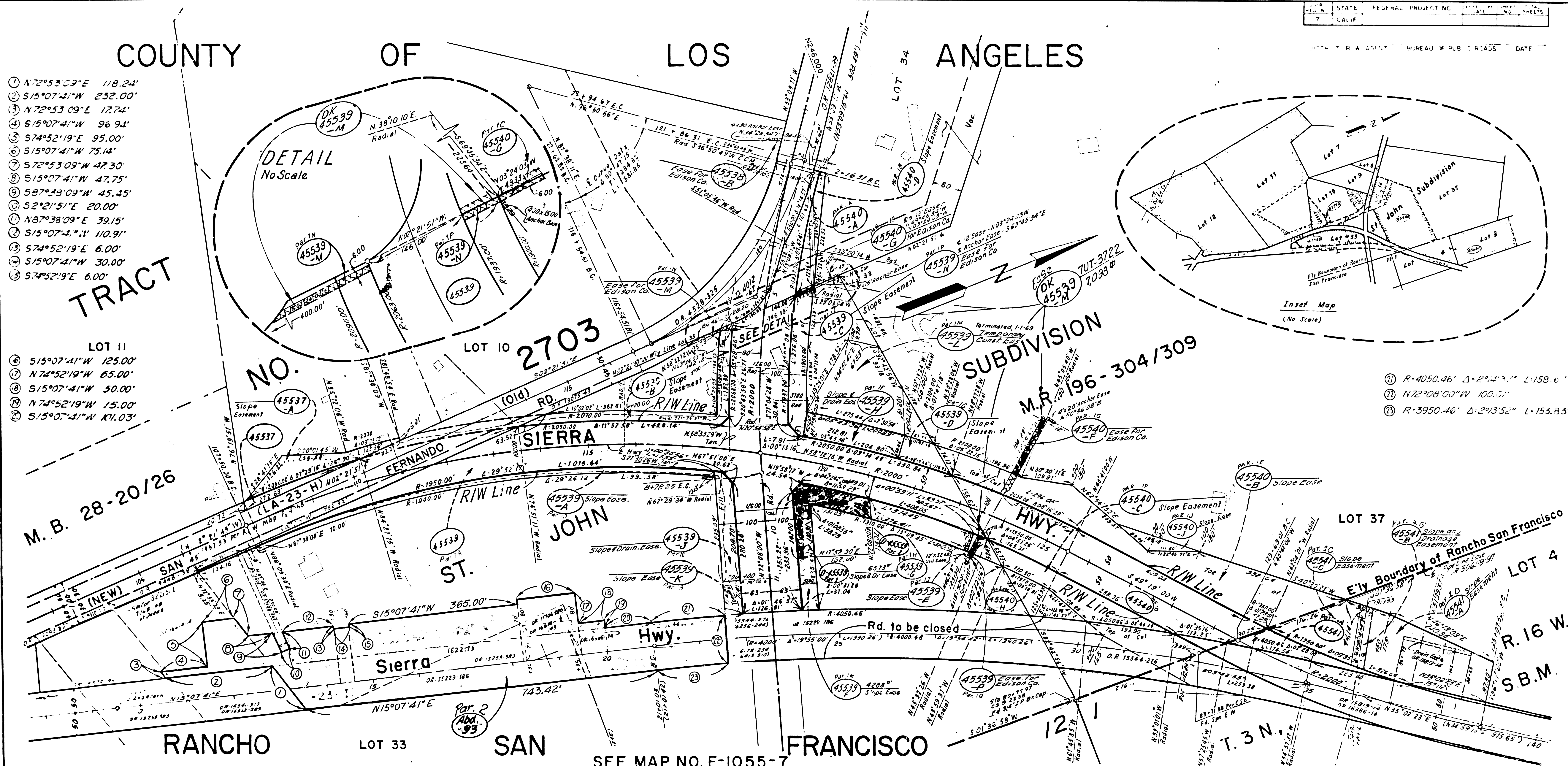


COUNTY OF LOS ANGELES

STATE FEDERAL PROJECT NO. 7 CALIF. BUREAU OF PUB. WORKS DATE

- ① N72°53'59"E 118.24'
- ② S15°07'41"W 232.00'
- ③ N72°53'09"E 1274'
- ④ S15°07'41"W 96.94'
- ⑤ S74°52'19"E 95.00'
- ⑥ S15°07'41"W 75.14'
- ⑦ S72°53'09"W 47.30'
- ⑧ S15°07'41"W 47.75'
- ⑨ S87°43'09"W 45.45'
- ⑩ S2°21'51"E 20.00'
- ⑪ N87°38'09"E 39.15'
- ⑫ S15°07'41"W 110.91'
- ⑬ S74°52'19"E 6.00'
- ⑭ S15°07'41"W 30.00'
- ⑮ S74°52'19"E 6.00'

- ⑯ S15°07'41"W 125.00'
- ⑰ N74°52'19"W 65.00'
- ⑱ S15°07'41"W 50.00'
- ⑲ N74°52'19"W 15.00'
- ⑳ S15°07'41"W 11.03'



- ⑳ R=4050.46' Δ=2°47' L=158.6'
- ㉑ N72°08'00"W 100.51'
- ㉒ R=3950.46' Δ=2°43'52" L=153.83'

SEE MAP NO. F-1055-7

PARCEL NO.	GRANTOR OR GRANTEE	TO BE ACQUIRED	AREA* EXCESS TOTAL	INST. DATE	RECORDING DATA O.R.	PARCEL NO.	GRANTOR OR GRANTEE	TO BE ACQUIRED	AREA* EXCESS TOTAL	INST. DATE	RECORDING DATA O.R.	PARCEL NO.	GRANTOR OR GRANTEE	TO BE ACQUIRED	AREA* EXCESS TOTAL	INST. DATE	RECORDING DATA O.R.	
45537	RC Nuditch et al.	3496	359 Ac.	5-28-69	D4304-755	45539	Sierra Point Dev. Corp.	188,084	1787 Ac.	Fee	10-6-69	D4304-755	45540	Sierra Point Dev. Corp.	62,836	3308 Ac.	Fee	3-16-75
45537A	"	10,093	"	"	"	45539-A	"	5,973	"	"	"	"	45540-A	"	9,959	"	"	"
						45539-B	"	13,272	"	"	"	"	45540-B	"	58,506	"	"	"
						45539-C	"	10,976	"	"	"	"	45540-C	"	16,912	"	"	"
						45539-D	"	4,585	"	"	"	"	45540-D	"	6,784	"	"	"
						45539-E	"	2,355	"	"	"	"	45540-E	"	2,276	"	"	"
						45539-F	"	8,501	"	"	"	"	45540-F	"	2,649	"	"	"
						45539-G	"	15,228	"	"	"	"	45540-G	"	"	"	"	"
						45539-H	"	16,228	"	"	"	"	45540-H	"	"	"	"	"
						45539-I	"	8,386	"	"	"	"	45540-I	"	"	"	"	"
						45539-J	"	2,645	"	"	"	"	45540-J	"	"	"	"	"
						45539-K	"	25,734	"	"	"	"	45540-K	"	"	"	"	"
						45539-L	"	933	"	"	"	"	45540-L	"	"	"	"	"
						45539-M	"	4,202	"	"	"	"	45540-M	"	"	"	"	"
						45539-N	"	6,540	"	"	"	"	45540-N	"	"	"	"	"
						45539-O	"	"	"	"	"	"	45540-O	"	"	"	"	"
						45539-P	"	"	"	"	"	"	45540-P	"	"	"	"	"
						45539-Q	"	"	"	"	"	"	45540-Q	"	"	"	"	"
						45539-R	"	"	"	"	"	"	45540-R	"	"	"	"	"
						45539-S	"	"	"	"	"	"	45540-S	"	"	"	"	"
						45539-T	"	"	"	"	"	"	45540-T	"	"	"	"	"
						45539-U	"	"	"	"	"	"	45540-U	"	"	"	"	"
						45539-V	"	"	"	"	"	"	45540-V	"	"	"	"	"
						45539-W	"	"	"	"	"	"	45540-W	"	"	"	"	"
						45539-X	"	"	"	"	"	"	45540-X	"	"	"	"	"
						45539-Y	"	"	"	"	"	"	45540-Y	"	"	"	"	"
						45539-Z	"	"	"	"	"	"	45540-Z	"	"	"	"	"

REVISION DATES		STATE OF CALIFORNIA	
REV. BY	DATE	REV. BY	DATE
SMR	1-16-67		
SEW	4-7-67		
BEW	5-11-67		
BEW	6-2-67		
PT	6-8-68		
GFK	6-26-70		
GFK	11-2-70		

TRANSPORTATION AGENCY DEPARTMENT OF PUBLIC WORKS

DIVISION OF HIGHWAYS

EASEMENT: 07-LA-14-R 27.0

APPRAISAL MAP

Y Intersection of exist. Sierra Hwy & exist. San Fernando Rd. (St. John's Sub)

SCALE: 1"=100' FILE NO: F-1055-8 DATE: 7-7-66

DRAFT: R.J.S. RWPE: H.H. Hopkins APPROVED: Weatherholt

LEGEND: ACCESS DENIAL LINE TOP OF CUT TOE OF FILL UNLESS OTHERWISE NOTED ALL AREAS ARE IN SQUARE FEET IF MORE THAN ONE BEARING AND DISTANCE ARE SHOWN FOR A LINE, THE ONE IN PARENTHESES IS PREVIOUS RECORD

F.M. 21223