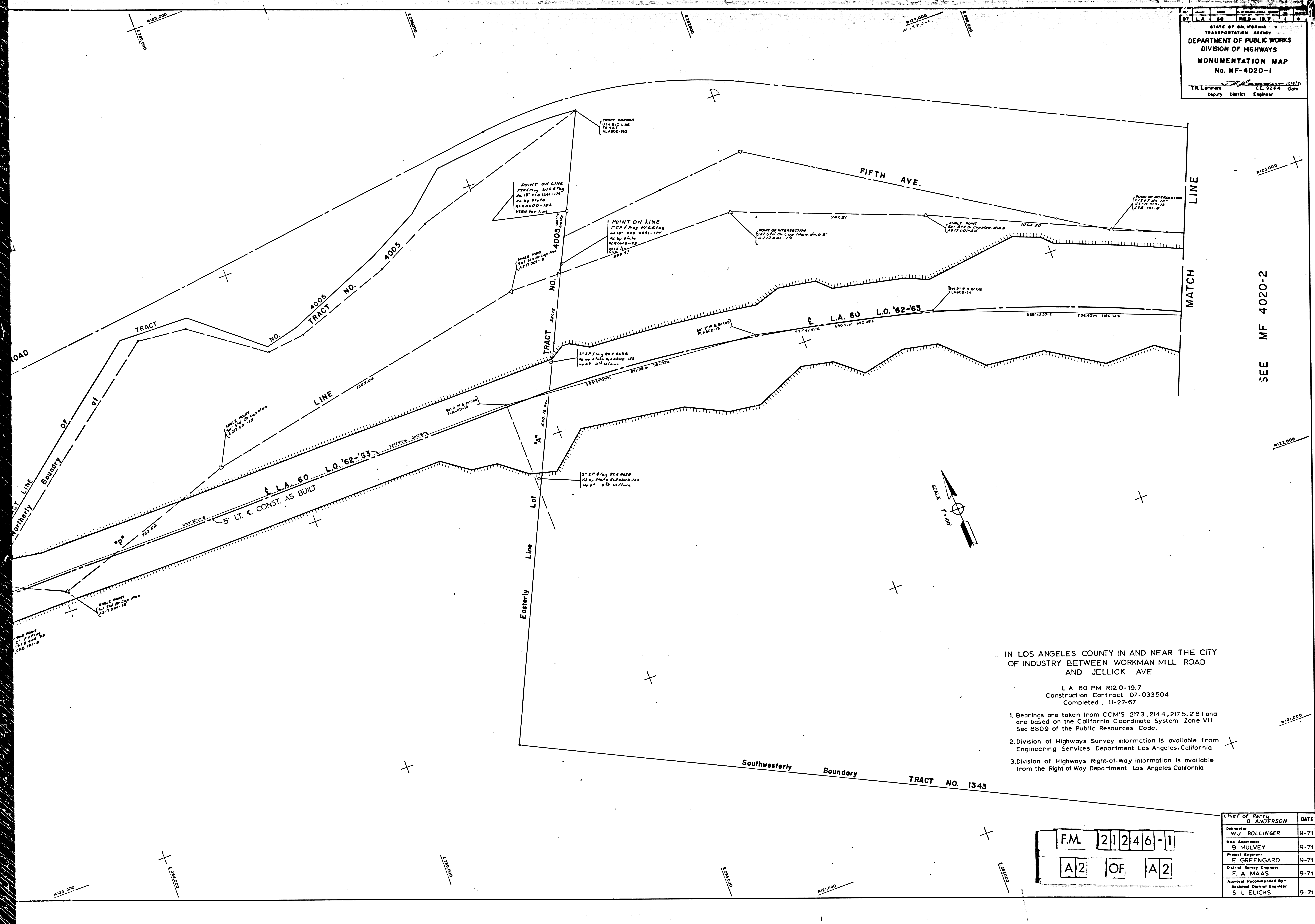


SEE MF 4019

F.M. 21246-1
A1 OF A2



SEE MF 4020-2

IN LOS ANGELES COUNTY IN AND NEAR THE CITY
 OF INDUSTRY BETWEEN WORKMAN MILL ROAD
 AND JELICK AVE

L.A. 60 PM R12 0-19.7
 Construction Contract 07-033504
 Completed 11-27-67

1. Bearings are taken from CCM'S 2173, 2144, 2175, 2181 and are based on the California Coordinate System Zone VII Sec. 8809 of the Public Resources Code.
2. Division of Highways Survey information is available from Engineering Services Department Los Angeles, California
3. Division of Highways Right-of-Way information is available from the Right of Way Department Los Angeles California

F.M. 21246-1
 A2 OF A2

Chief of Party	DATE
D. ANDERSON	
Deputy	
W.J. BOLLINGER	9-71
Map Supervisor	
B. MULVEY	9-71
Project Engineer	
E. GREENGARD	9-71
District Survey Engineer	
F.A. MAAS	9-71
Approved Recommended By	
Assistant District Engineer	
S.L. ELICKS	9-71