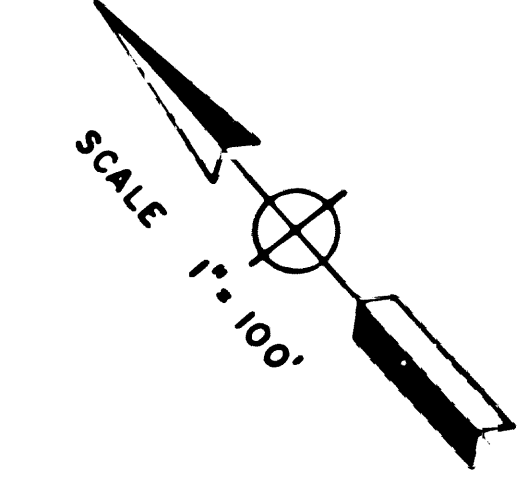
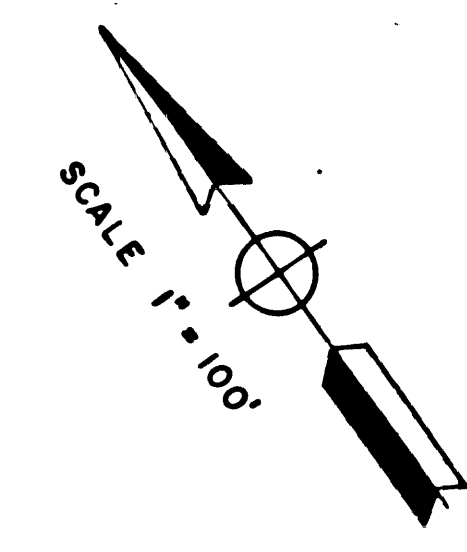
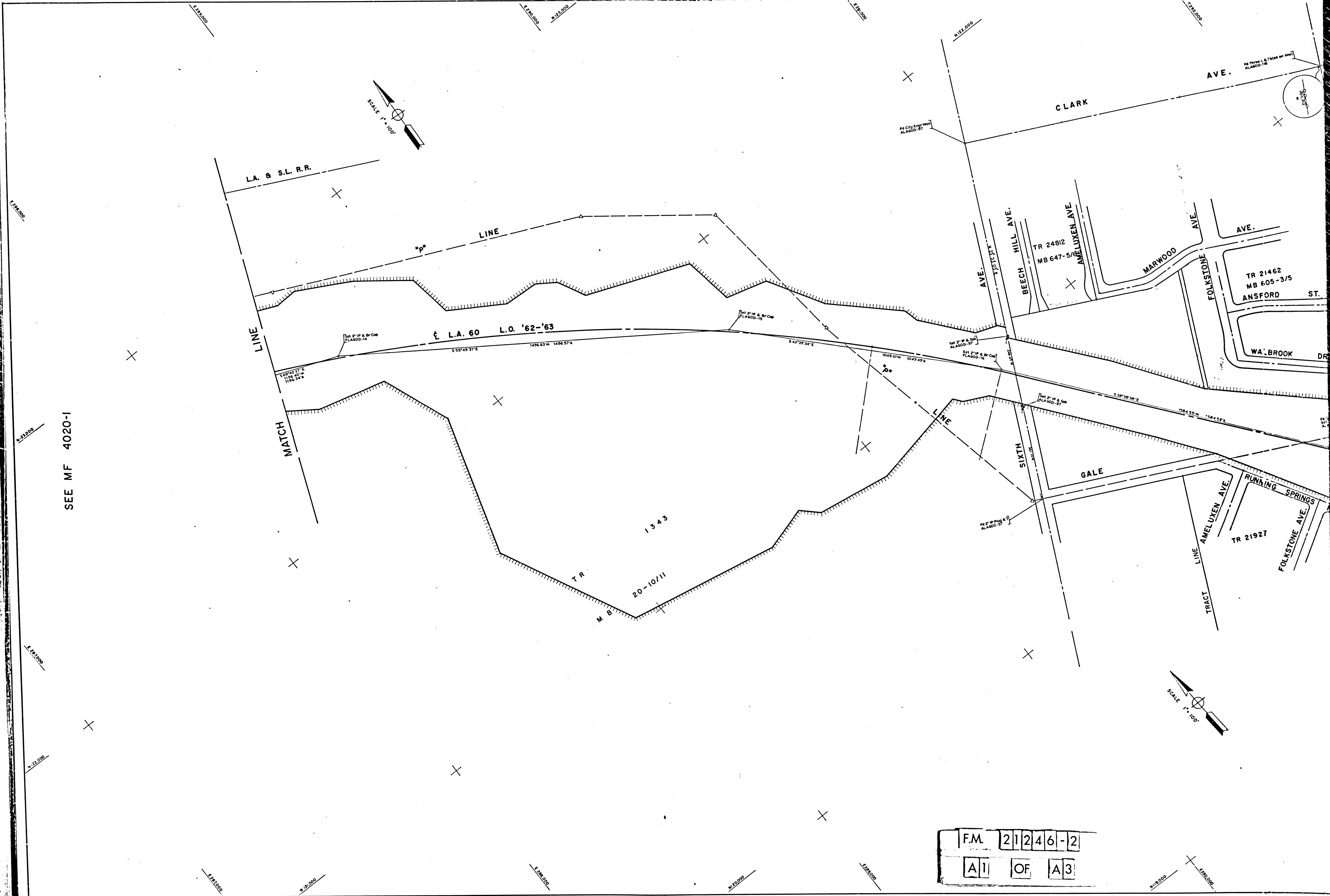


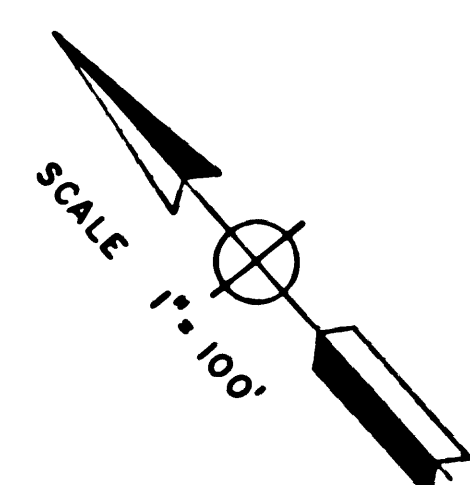
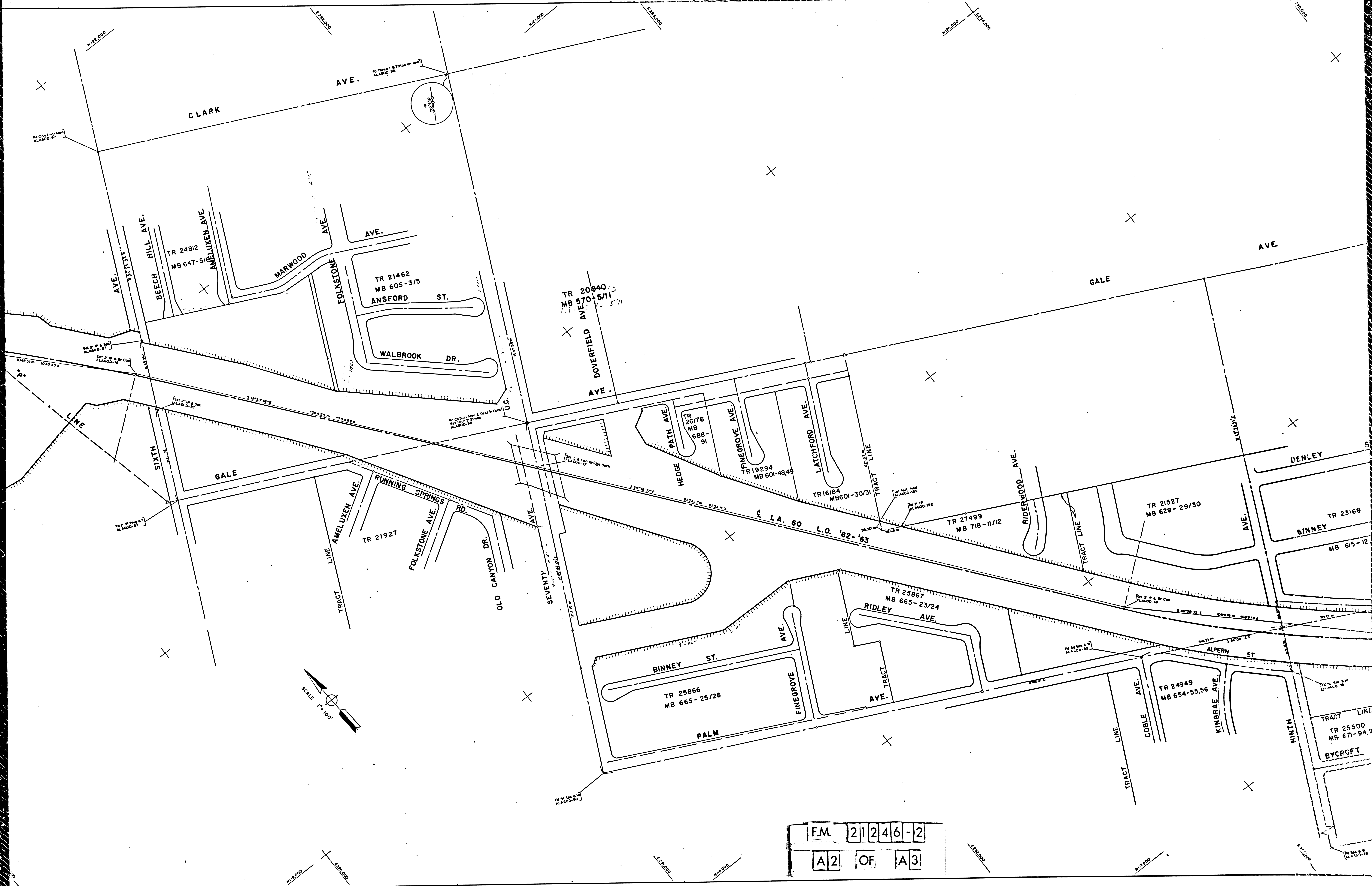
SEE MF 4020-1



FM	2	1	2	4	6	-	2
A	1	OF	A	3			



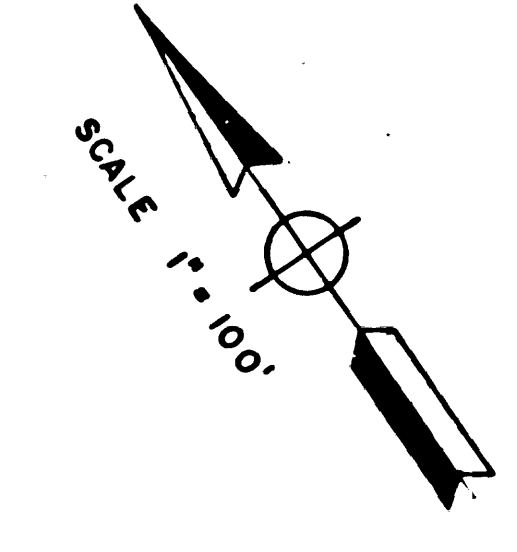




F.M. 21246-2  
 A2 OF A3



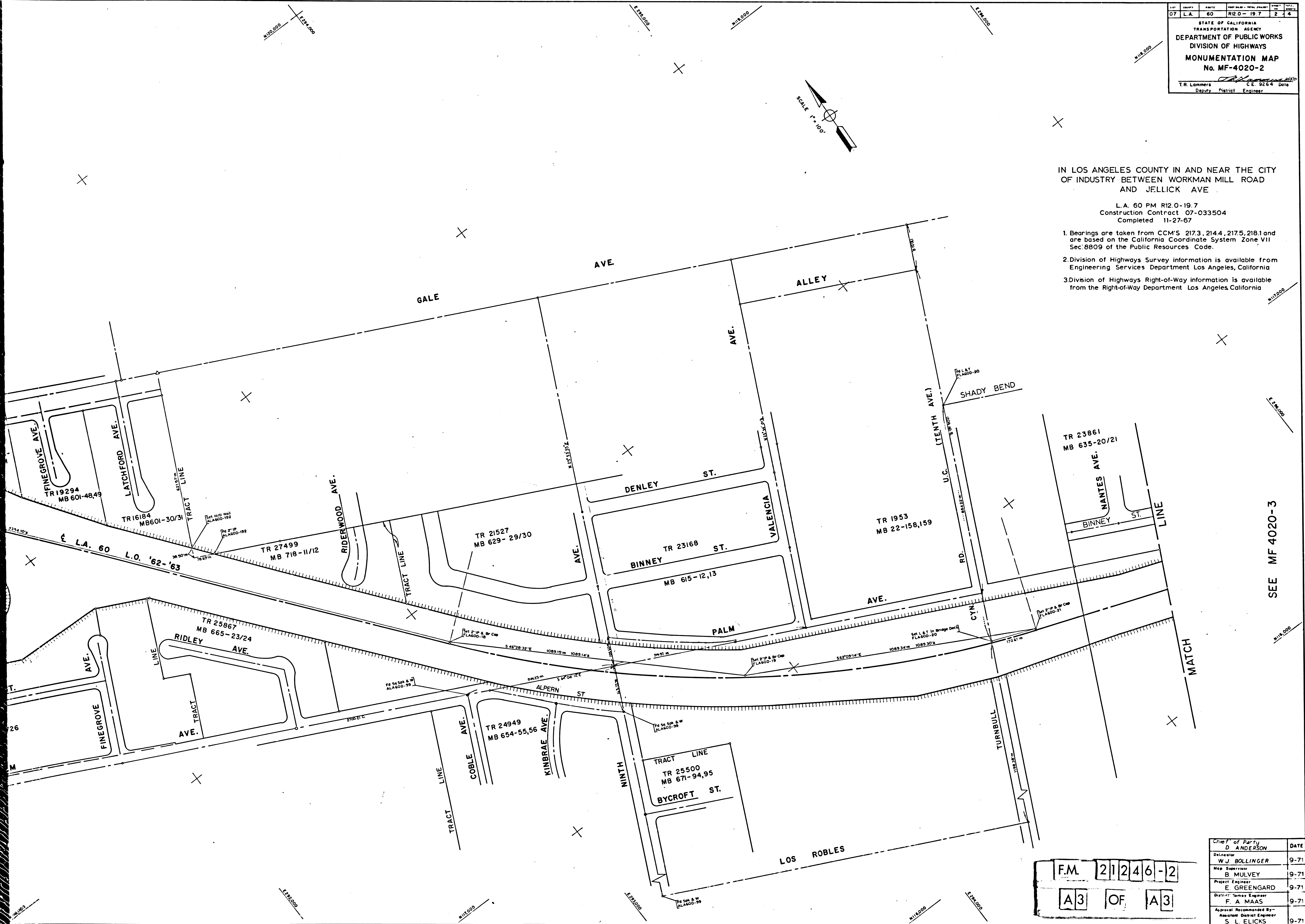
07	L.A.	60	RM 2.0-19.7	2	4
STATE OF CALIFORNIA TRANSPORTATION AGENCY DEPARTMENT OF PUBLIC WORKS DIVISION OF HIGHWAYS MONUMENTATION MAP No. MF-4020-2					
T.R. Lammers			C.E. 9264	Date	
Deputy District Engineer					



IN LOS ANGELES COUNTY IN AND NEAR THE CITY  
OF INDUSTRY BETWEEN WORKMAN MILL ROAD  
AND JELICK AVE

L.A. 60 PM RM 2.0-19.7  
Construction Contract 07-033504  
Completed 11-27-67

1. Bearings are taken from CCM'S 2173, 2144, 2175, 2181 and are based on the California Coordinate System Zone VII Sec. 8809 of the Public Resources Code.
2. Division of Highways Survey information is available from Engineering Services Department Los Angeles, California
3. Division of Highways Right-of-Way information is available from the Right-of-Way Department Los Angeles, California



SEE MF 4020-3

FM 21246-2  
A3 OF A3

Chief of Party	DATE
D. ANDERSON	
Designer	
W. J. BOLLINGER	9-71
Map Supervisor	
B. MULVEY	9-71
Project Engineer	
E. GREENGARD	9-71
District Survey Engineer	
F. A. MAAS	9-71
Approval Recommended By:	
Assistant District Engineer	
S. L. ELICKS	9-71