

JELLYCK AVE TO GOLDEN SPRINGS DRIVE
IN VICINITY OF
L.A. - 60 PM. R19.7 TO PM. R26.5
Construction Contract 07503036394

This map will be superseded upon the filing of a final Monumentation Map after completion of freeway construction about September, 1970.

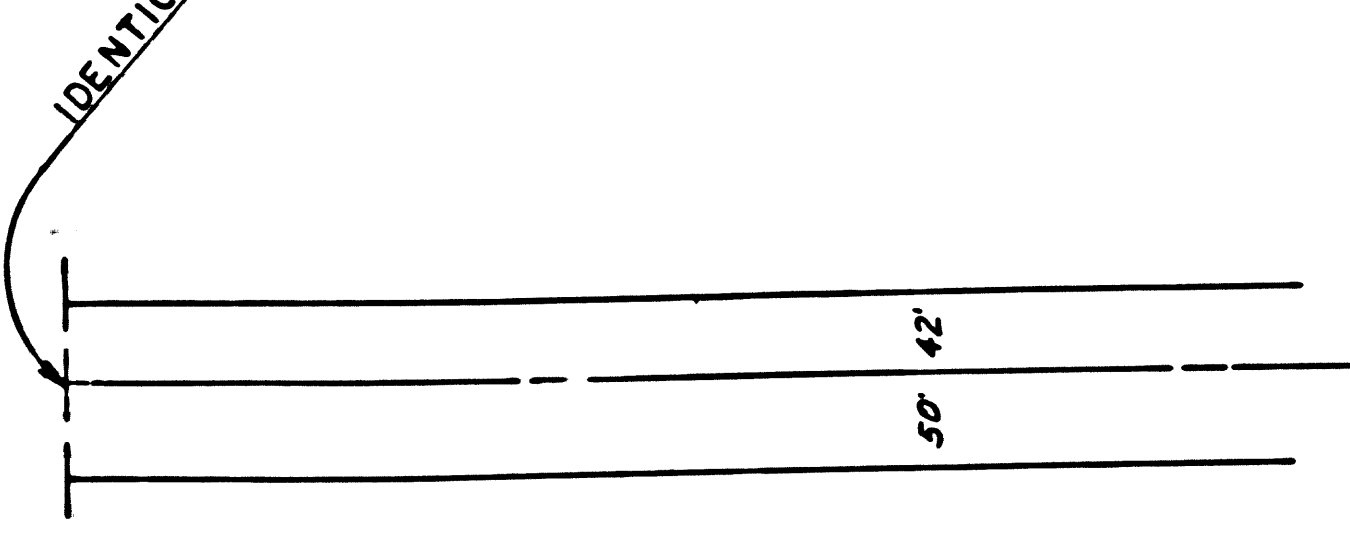
- Bearings are taken from CCM'S 218.2, 218.3, 55.25, 55.4 & 55.8 and are based on the California Coordinate System Zone VII, Sec. 8809 of the Public Resources Code.
- Division of Highways Survey information is available from Engineering Services Department located at 550 So. Vermont Ave. Los Angeles California.
- Division of Highways Right-of-Way information is available from the Right-of-Way Department located at 120 So. Spring St. Los Angeles California.

F.M. 21247-1
A1 OF A3

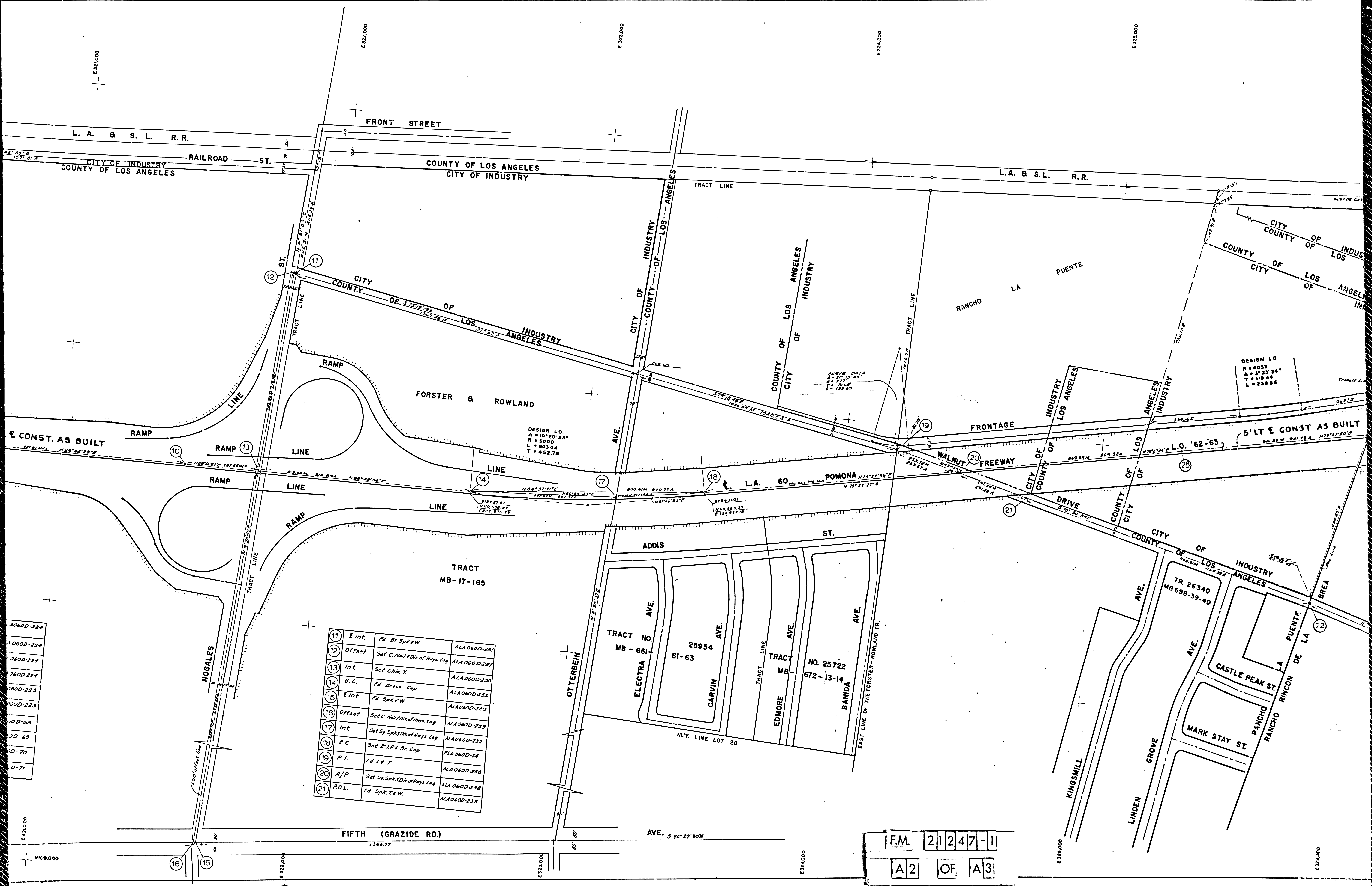
1	E Prod	Fd Rd Hd Spk. F.W.	ALA060D-224
2	E Int.	Fd Spk. T.F.W.	ALA060D-224
3	E Int.	Fd Spk. Set Nail	ALA060D-224
4	Int.	Fd Sp. Spk. / Div of Hwy Leg	ALA060D-224
5	E Int.	Fd Spk. T.F.W.	ALA060D-223
6	E Int.	Fd Spk. F.W.	ALA060D-223
7	A/P	Set 2" I.P. Br. Cap	FLA 60D-68
8	A/P	Set 2" I.P. Br. Cap	FLA 60D-69
9	A/P	Set 2" I.P. Br. Cap	FLA 60D-70
10	A/P	Set 2" I.P. Br. Cap	FLA 60D-71

11	E Int.	Fd Br Spk. F.W.	ALA060D-224
12	Offset	Set C Nail / Div of Hwy Leg	ALA060D-224
13	Int.	Set Chis X	ALA060D-224
14	B.C.	Fd Brass Cap	ALA060D-224
15	E Int.	Fd Spk. F.W.	ALA060D-223
16	Offset	Set C Nail / Div of Hwy Leg	ALA060D-223
17	Int.	Set Sp Spk / Div of Hwy Leg	ALA060D-223
18	B.C.	Set 2" I.P. Br. Cap	FLA 60D-74
19	P.I.	Fd Lt T	ALA060D-224
20	A/P	Set Sp Spk / Div of Hwy Leg	ALA060D-224
21	R.D.L.	Fd Spk. T.F.W.	ALA060D-224

DATE	DESCRIPTION
AUG. 71	DESIGNER K. LEE
AUG. 71	MAP SUPERVISOR B. MULVEY
AUG. 71	PROJECT ENGINEER E. GREENGARD
AUG. 71	DISTRICT SURVEY ENGINEER F. A. MAAS
AUG. 71	APPROVED & RECOMMENDED BY ASSISTANT DISTRICT ENGINEER S. L. ELICKS



FIFTH 586°22'30"E
3603 3/4" Nogales to Jellick
3603.48 A



DESIGN L.O.
 Δ = 10° 20' 53"
 R = 8000
 L = 903.04
 T = 452.75

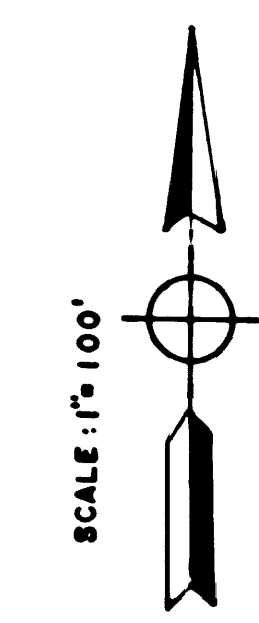
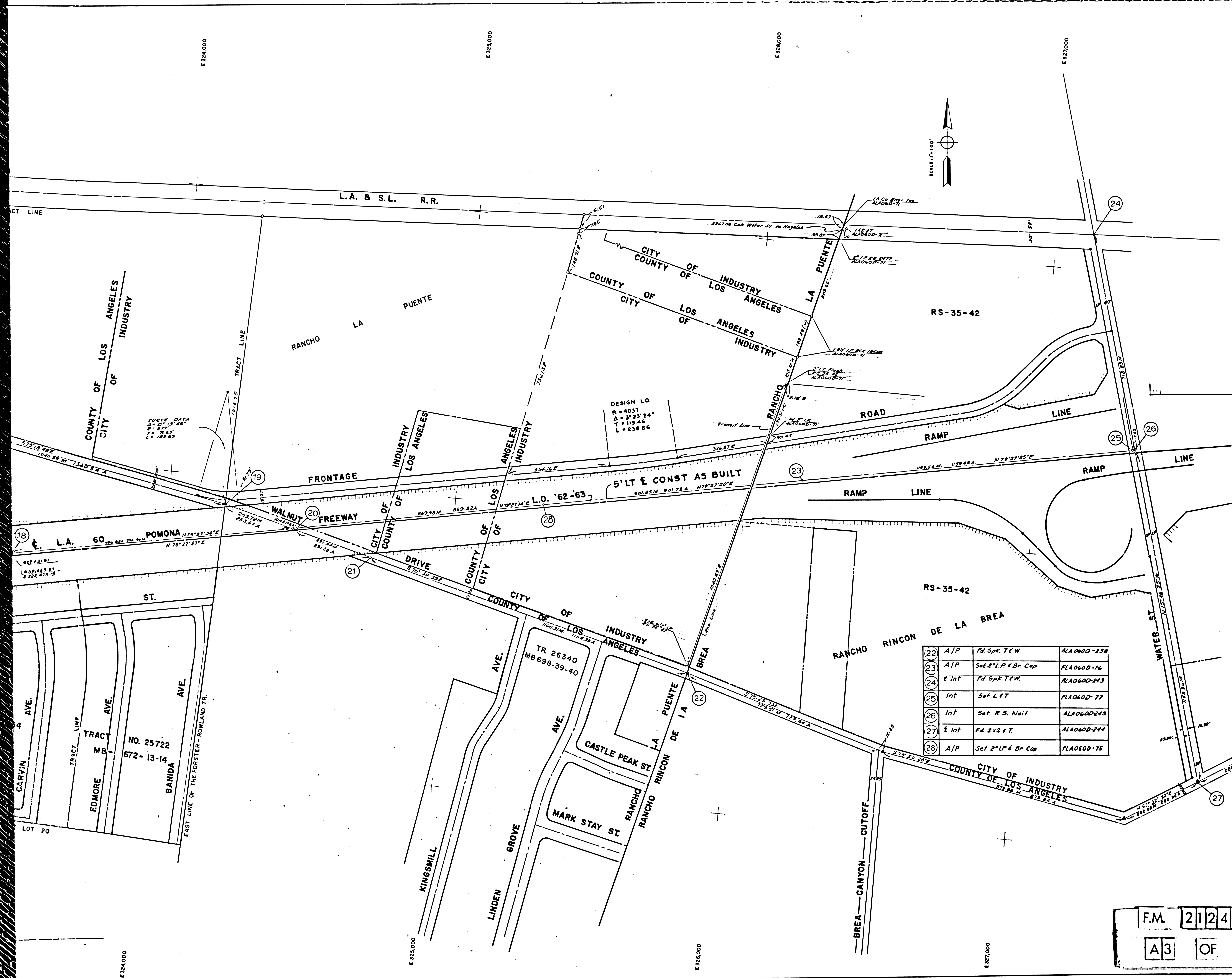
CURVE DATA
 Δ = 27° 13' 45"
 R = 371'
 L = 76.62'
 T = 189.65'

DESIGN L.O.
 R = 4031'
 Δ = 3° 23' 24"
 T = 119.46'
 L = 838.86'

11	E Int.	Fd. Br. Spk. P.W.	ALA060D-231
12	Offset	Set C. Nail 10 in of Hwy. tag	ALA060D-231
13	Int.	Set Chis. X	ALA060D-230
14	B.C.	Fd. Brass Cap	ALA060D-232
15	E Int.	Fd. Spk. P.W.	ALA060D-229
16	Offset	Set C. Nail 10 in of Hwy. tag	ALA060D-229
17	Int.	Set Sp. Spk. 10 in of Hwy. tag	ALA060D-232
18	E.C.	Set 2" I.P. Br. Cap	FLA060D-74
19	P.I.	Fd. L4 T	ALA060D-238
20	A/P	Set Sp. Spk. 10 in of Hwy. tag	ALA060D-238
21	P.O.L.	Fd. Spk. T & W.	ALA060D-238

- ALA060D-224
- ALA060D-224
- ALA060D-224
- ALA060D-224
- ALA060D-225
- ALA060D-225
- ALA060D-68
- ALA060D-69
- ALA060D-70
- ALA060D-71

FM 21247-1
 A2 OF A3



SEE MF-4021-2

22	A/P	Fd Spk. T & W	ALA 060D-238
23	A/P	Set 2" I.P. & Br. Cap	FLA 060D-76
24	E Int	Fd Spk. T & W	ALA 060D-243
25	Int	Set L & T	FLA 060D-77
26	Int	Set R.S. Nail	ALA 060D-245
27	E Int	Fd. 2x2 ft.	ALA 060D-244
28	A/P	Set 2" I.P. & Br. Cap	FLA 060D-75

F.M. 21247-1
A3 OF A3