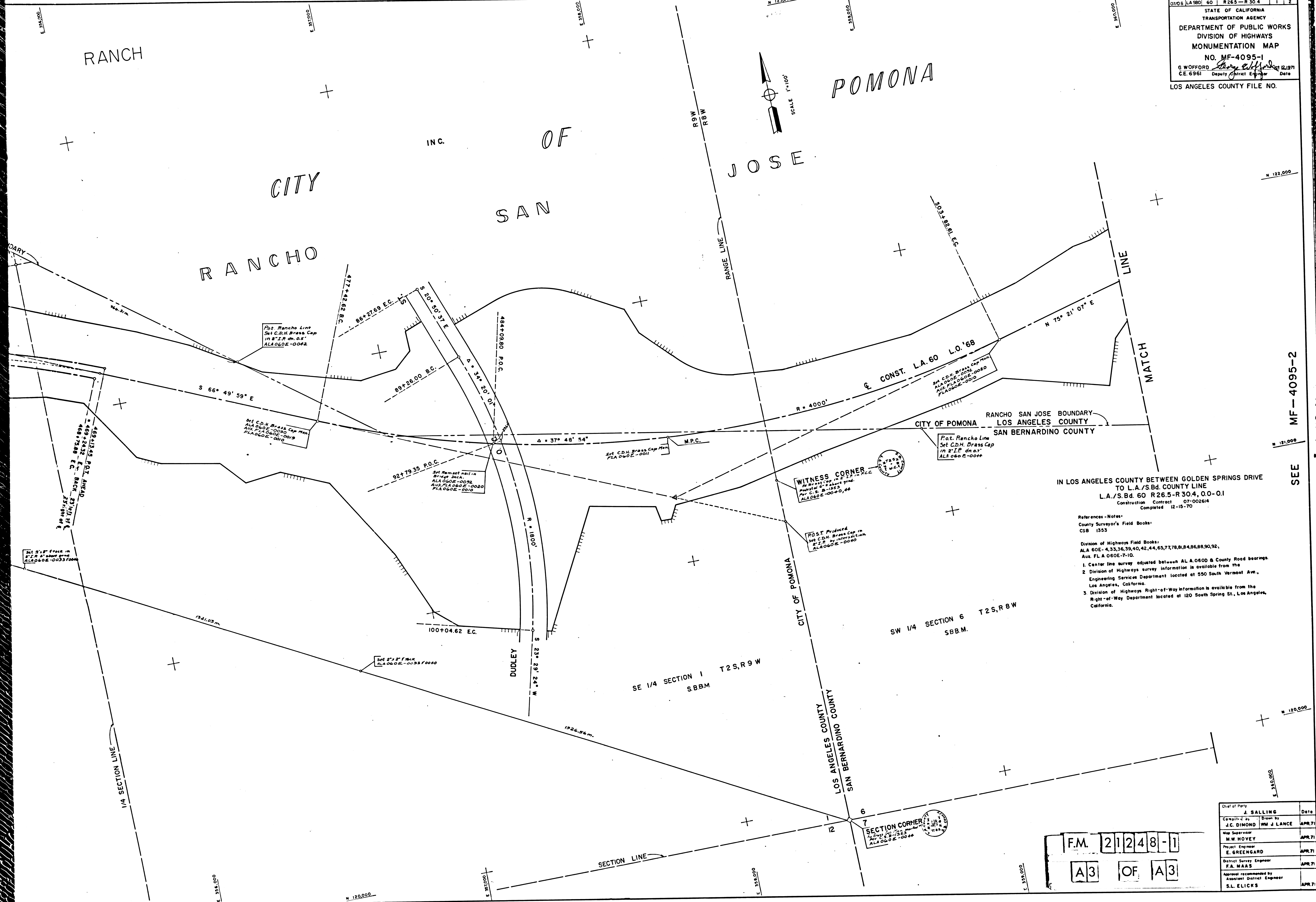


SEE MF-4021-4

F.M. 21248-1
A1 OF A3

SECTION CORNER
1/4" I.P. Brass Cap marked
Per C.S. B-1353



IN LOS ANGELES COUNTY BETWEEN GOLDEN SPRINGS DRIVE
TO L.A./S.Bd. COUNTY LINE
L.A./S.Bd. 60 R 26.5-R 30.4, 0.0-0.1
Construction Contract 07-002614
Completed 12-15-70

- References - Notes:
- County Surveyor's Field Books: CSB 1553
 - Division of Highways Field Books: ALA 60E-4,33,36,39,40,42,44,65,77,78,81,84,86,88,90,92, Aux. FLA 060E-7-10.
 - 1. Center line survey adjusted between ALA 060D & County Road bearings.
 - 2. Division of Highways survey information is available from the Engineering Services Department located at 550 South Vermont Ave., Los Angeles, California.
 - 3. Division of Highways Right-of-Way information is available from the Right-of-Way Department located at 120 South Spring St., Los Angeles, California.

Chief of Party	J. SALLING	Date
Checked by	J.C. DIMOND	Drawn by
Map Supervisor	M.W. HOVEY	APR 71
Project Engineer	E. GREENARD	APR 71
District Survey Engineer	F.A. MAAS	APR 71
Approval recommended by	S.L. ELICKS	APR 71

FM 21248-1
A3 OF A3

SEE MF-4095-2