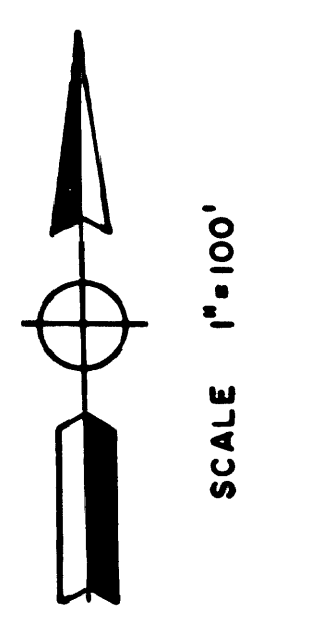


PHILLIPS RANCH

TRACT NO. 22650
MB. 600-25/27

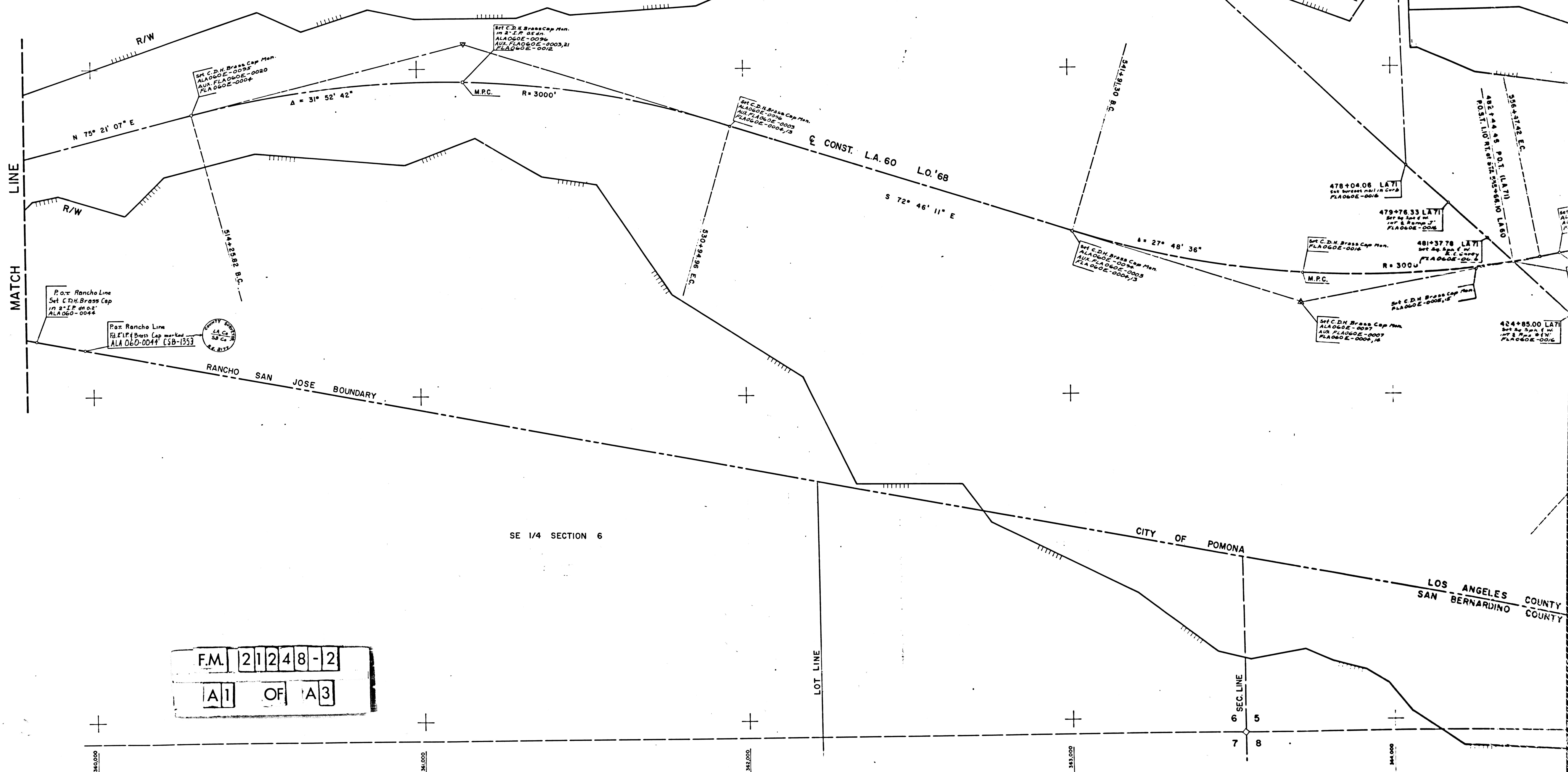
RANCHO SAN JOSE

TRACT NO. 4298
MB. 52-26/27



LINE MATCH

SEE MF-4095-1



SE 1/4 SECTION 6

CITY OF POMONA

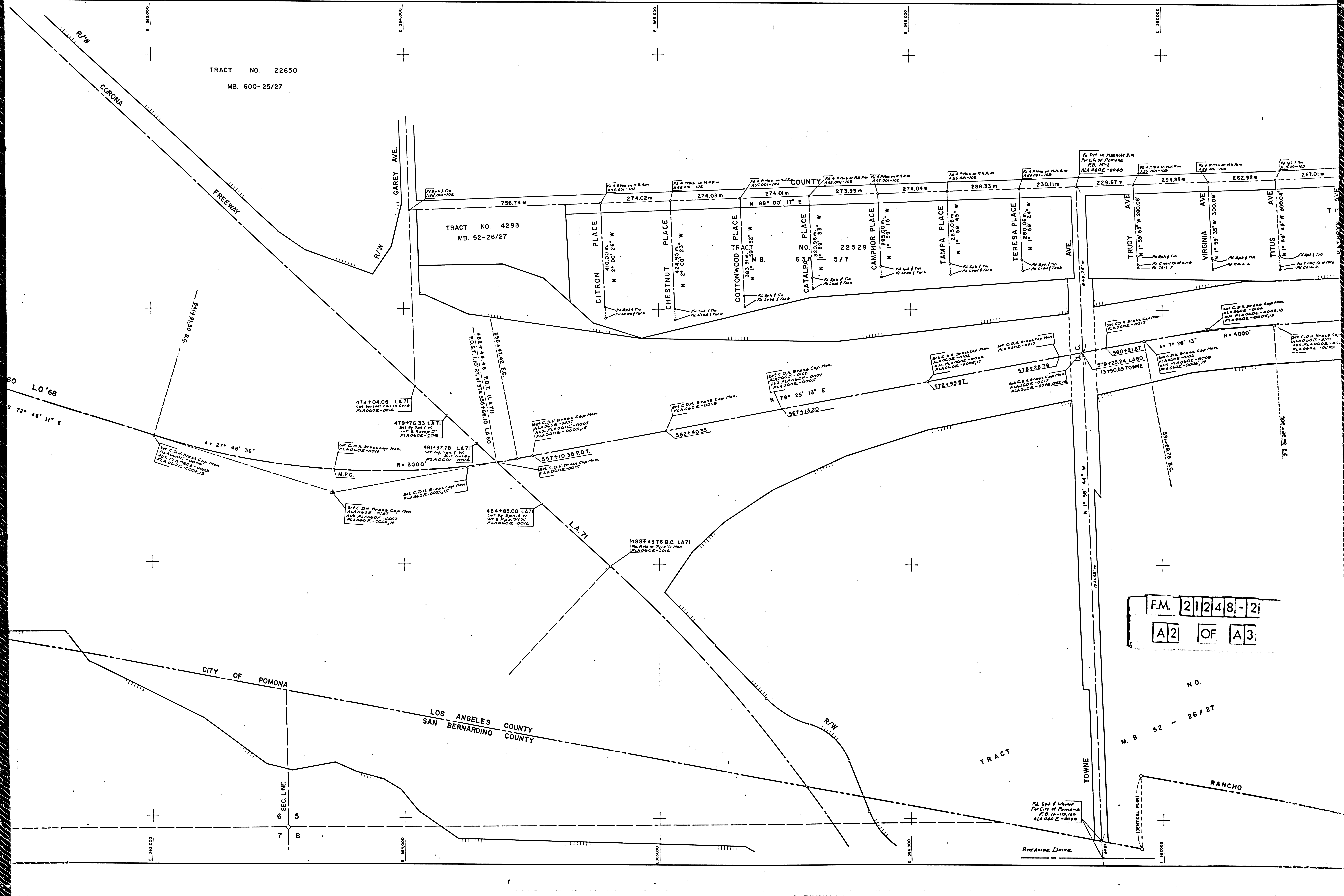
LOS ANGELES COUNTY
SAN BERNARDINO COUNTY

F.M. 21248-2
A1 OF A3

TRACT NO. 22650
MB. 600-25/27

TRACT NO. 4298
MB. 52-26/27

COUNTY



72° 46' 11" E
L.O.'68

8 = 27° 48' 36"

R = 3000

F.M. 21248-2
A2 OF A3

N.O.
M. B. 52 - 26/27

TRACT

TOWNE

RANCHO

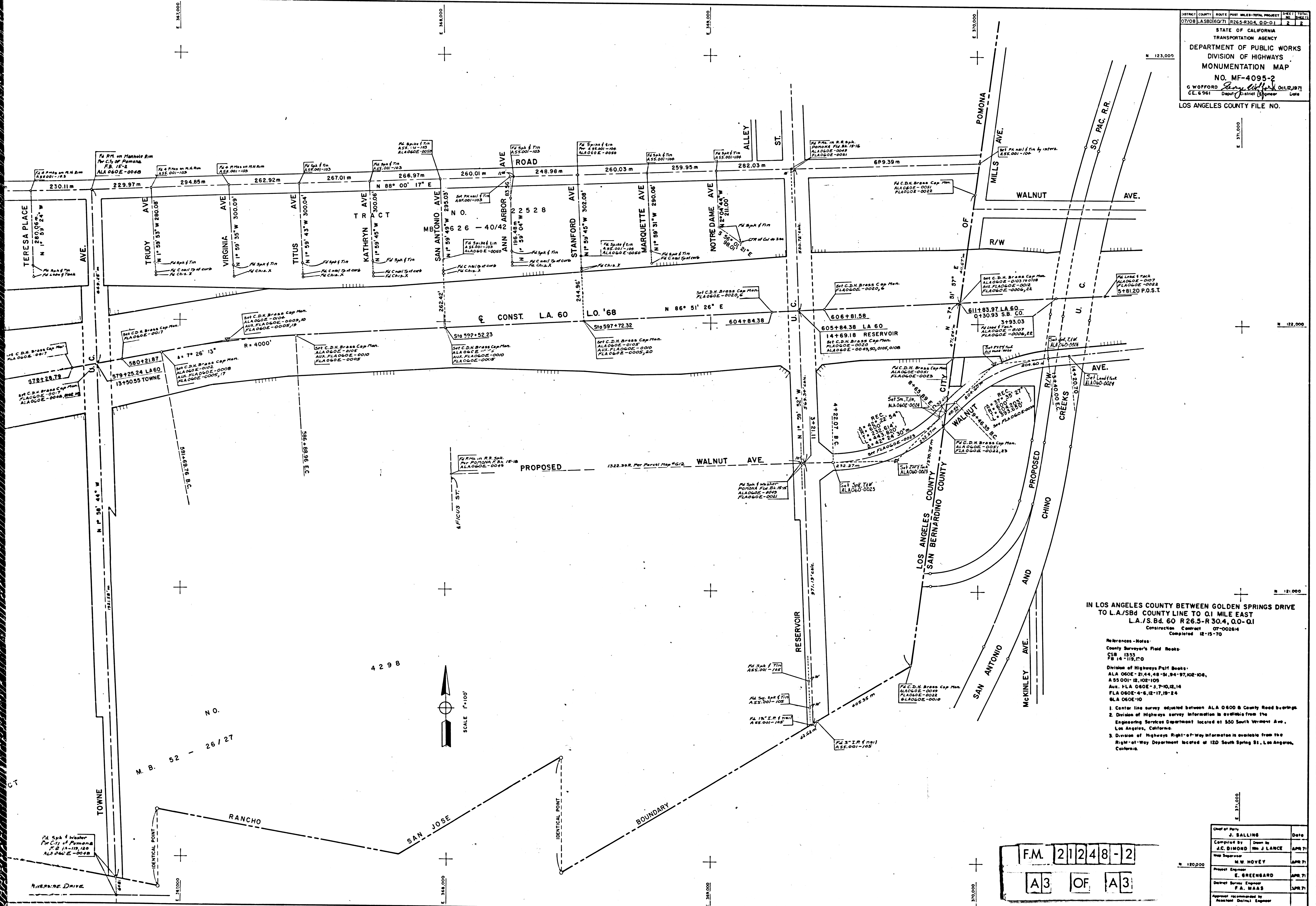
RIVERSIDE DRIVE

7

8

5

6



IN LOS ANGELES COUNTY BETWEEN GOLDEN SPRINGS DRIVE
 TO L.A./SBD COUNTY LINE TO QJ MILE EAST
 L.A./S. Bd. 60 R265-R304.00-Q1
 Construction Contract 07-002614
 Completed 12-15-70

- References - Notes:
- County Surveyor's Field Books:
 CSB 1353
 FB 14-118,120
 - Division of Highways Field Books:
 ALA 060E-21,44,48-51,94-97,102-108,
 A55 001-12,102-105
 A.S. 1-A 060E-3,7-10,12,14
 FLA 060E-4-6,12-17,19-24
 S.L.A 060E-10
 - Center line survey adjusted between ALA 0600 B County Road bearings.
 - Division of Highways survey information is available from the Engineering Services Department located at 350 South Vermont Ave., Los Angeles, California.
 - Division of Highways Right-of-Way information is available from the Right-of-Way Department located at 120 South Spring St., Los Angeles, California.

F.M. 21248-2
 A3 OF A3

Chief of Party	Date
J. SALLING	APR 71
Checked by A.C. BIRNBOIM	APR 71
Map Supervisor M.W. HOVEY	APR 71
Project Engineer E. GREENGARD	APR 71
District Survey Engineer F.A. MAAS	APR 71
Approved/Recommended by Assistant District Engineer S.L. ELICKS	APR 71